



65th/Borland/Sagert Conceptual Design

February 10, 2025

Agenda

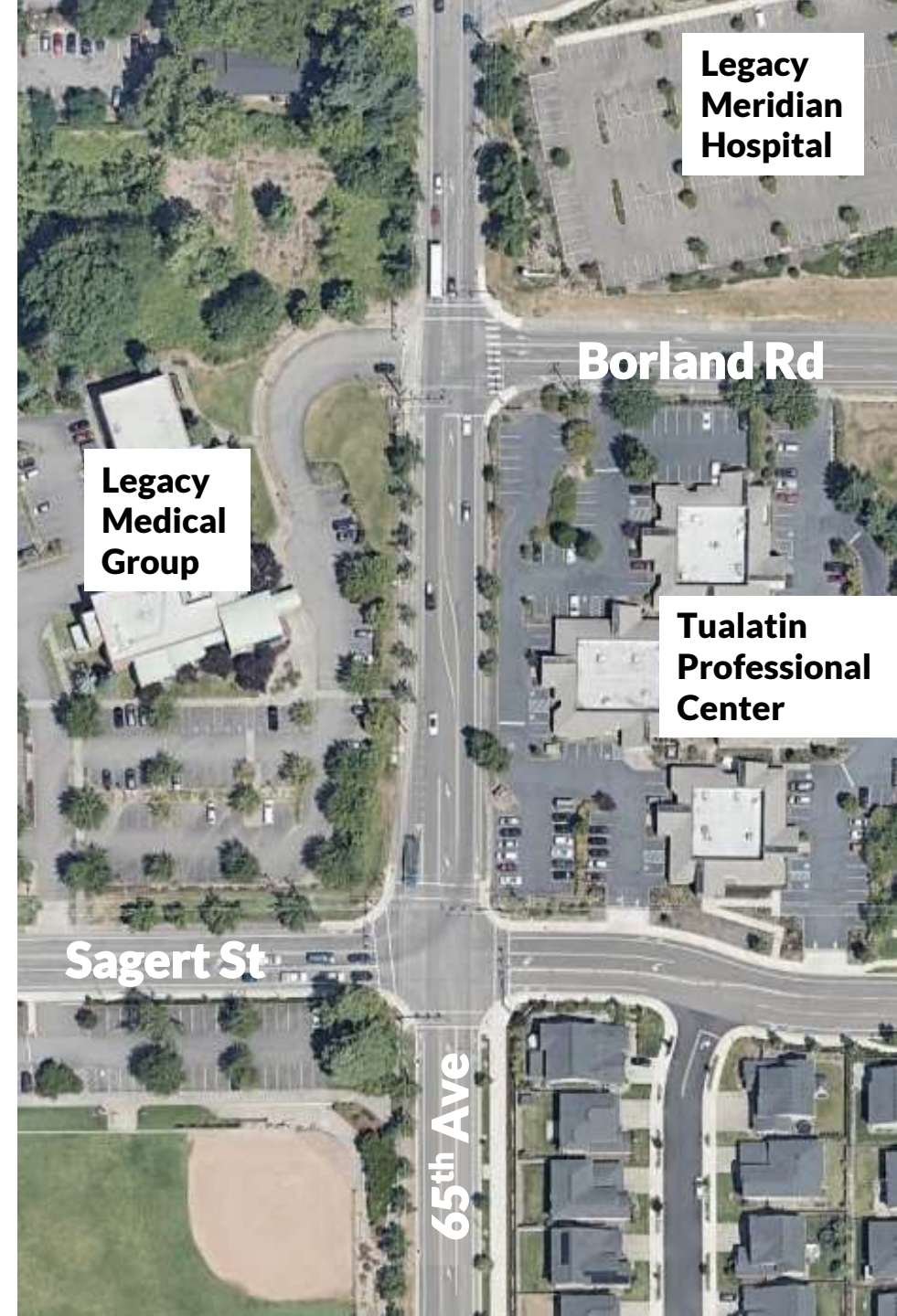
- Project Background
- Traffic Analysis and County Coordination
- Conceptual Design
- Next Steps
- Questions



CITY of
TUALATIN

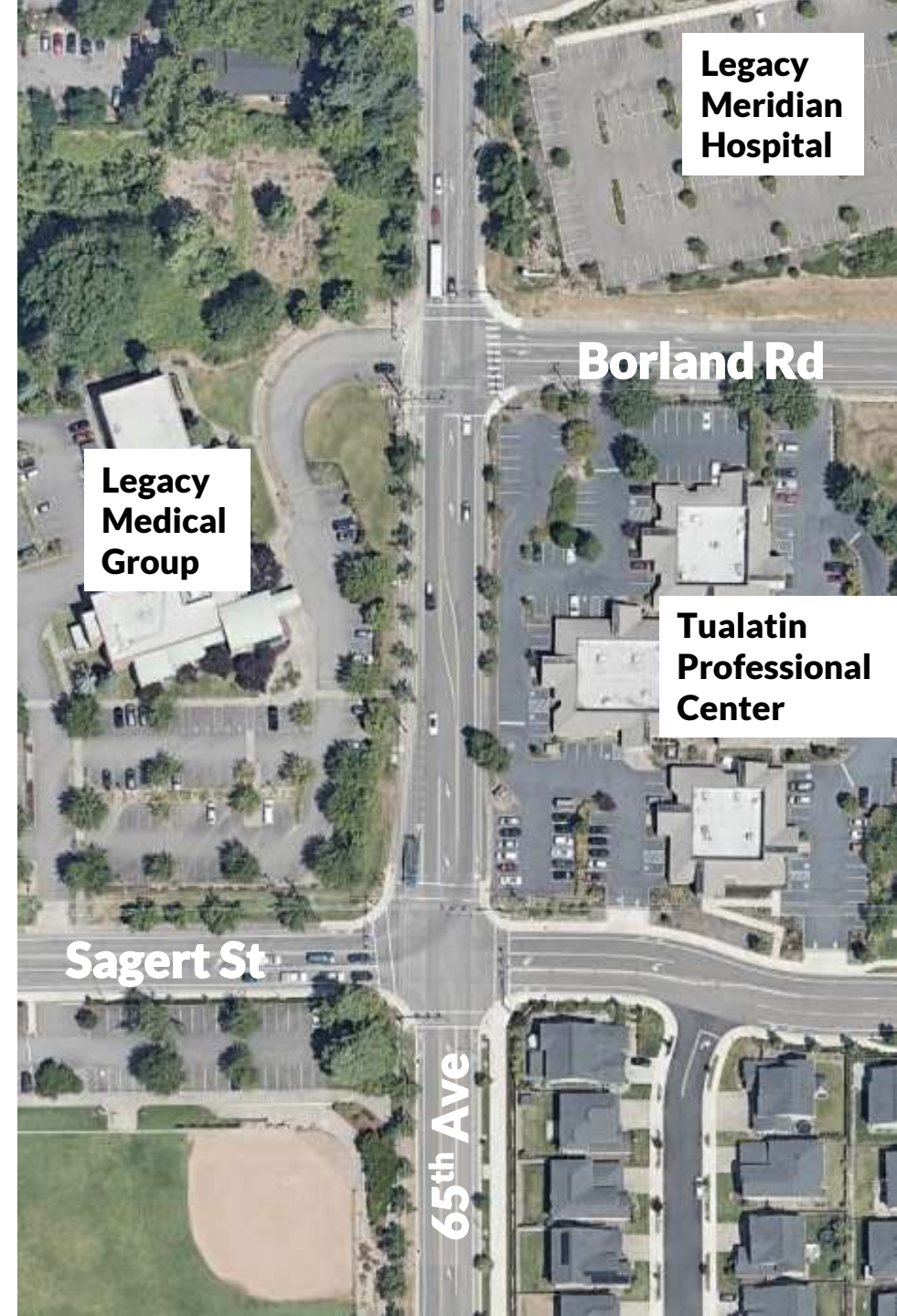
Project Background

- Congestion complaints received by City staff
- Transportation System Plan Update
 - 65th & Borland LOS E with long queues
 - Complaints during Public Engagement
 - Complaints during Community Advisory Committee Meetings
- Visual confirmation of congested conditions during peak hours

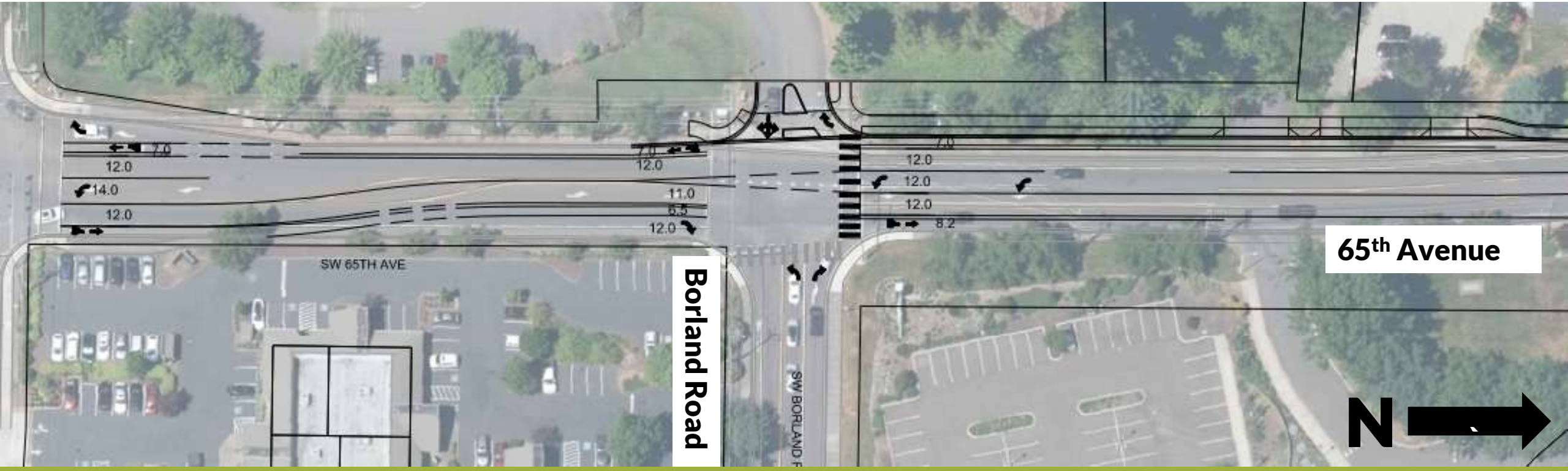


Traffic Analysis and County Coordination

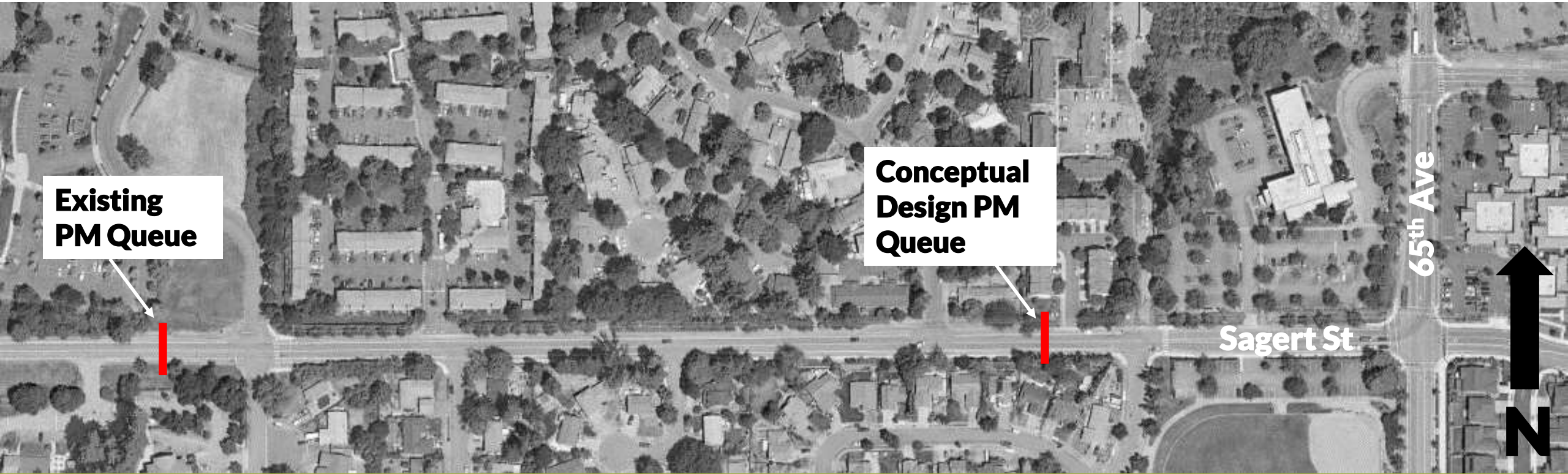
- Measured Traffic Volumes and Delays
- Modeled Traffic Operations
- Evaluated Walking and Cycling
- Safety Evaluation
- Evaluated Several Options
 - This concept clearly rose to the top
- Worked with Washington and Clackamas County staff throughout process – consensus recommendation of staff from all three agencies



Conceptual Design



Conceptual Design



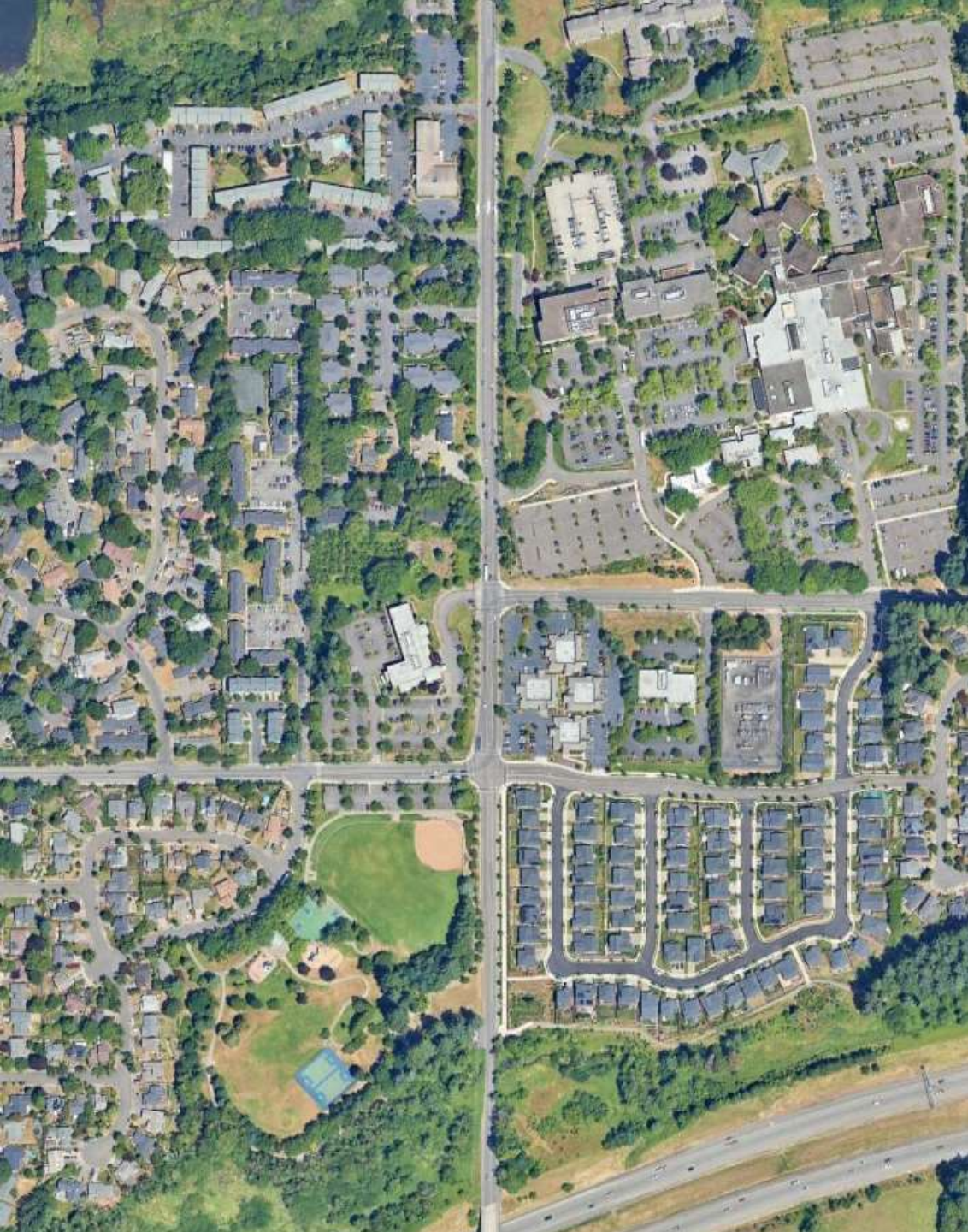
Next Steps



- Start conversations with adjacent property owners
- Public Engagement
- Move forward with Project Design



CITY of
TUALATIN



Questions?

