

RECORD OF SURVEY

FOR A PROPOSED PROPERTY LINE ADJUSTMENT
 LOCATED IN THE NORTHEAST 1/4 OF SECTION 22, TOWNSHIP 2 SOUTH,
 RANGE 1 WEST, W.M., CITY OF TUALATIN, WASHINGTON COUNTY, OREGON
 DATE: FEBRUARY 23, 2017

WASHINGTON COUNTY SURVEYOR'S OFFICE
 ACCEPTED FOR FILING 3-2-17

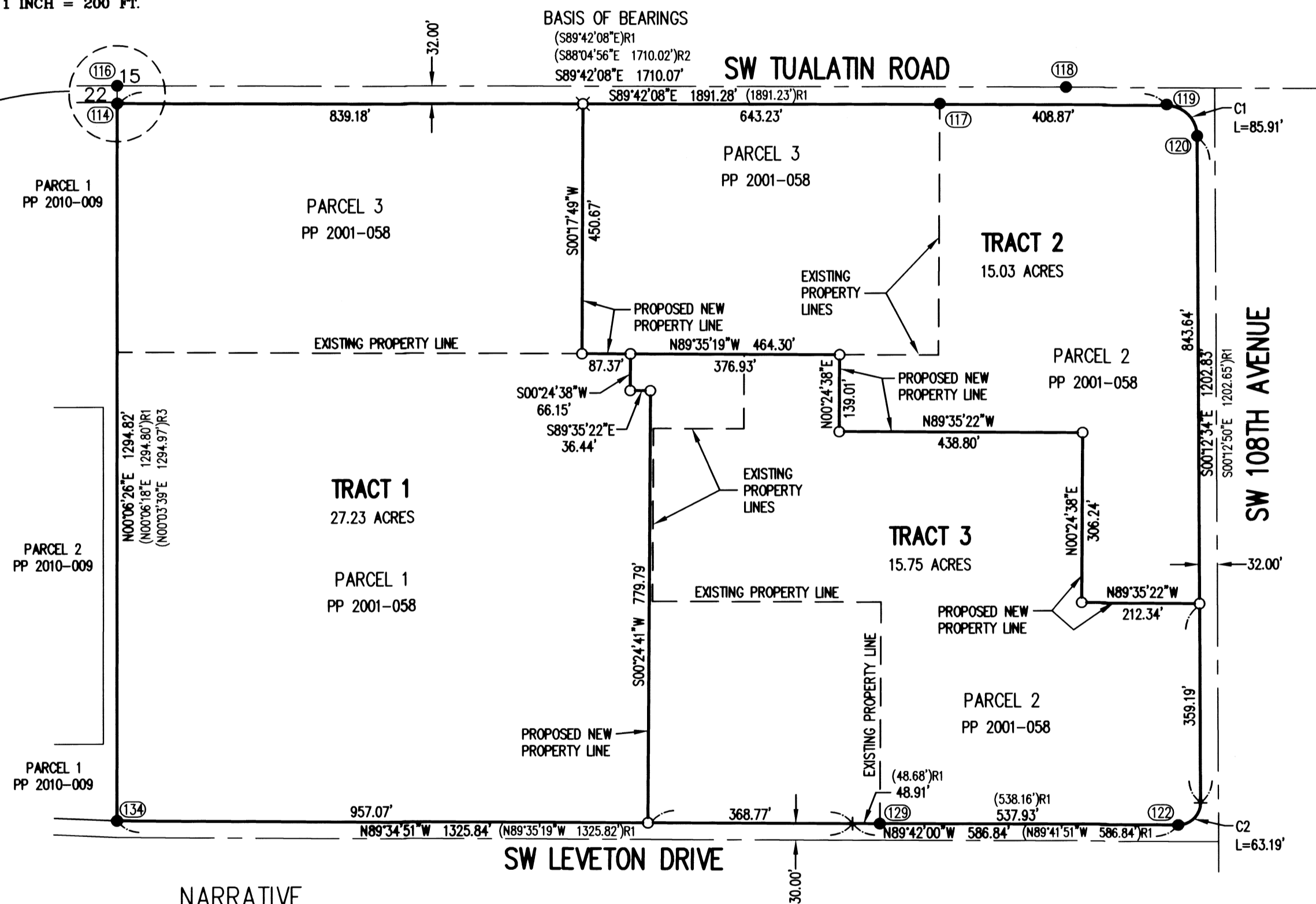
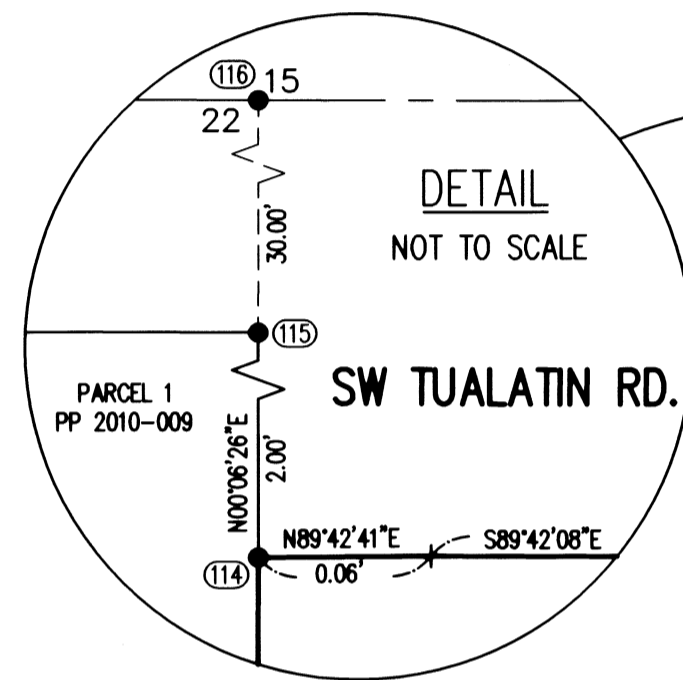
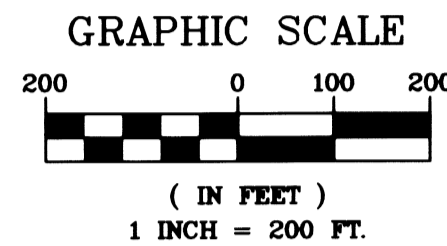
33034

REGISTERED
 PROFESSIONAL
 LAND SURVEYOR

Scott F. Field

OREGON
 JUNE 30, 1997
 SCOTT F. FIELD
 2844

12-31-2017
 RENEWAL DATE



MONUMENT DESCRIPTIONS

- (114) FOUND BRASS SCREW & 3/4" BRASS WASHER MARKED "PLS 2692" PER SN 28410
- (115) FOUND BRASS SCREW & 3/4" BRASS WASHER MARKED "PLS 2692" PER SN 28410
- (116) FOUND 2" BRASS DISK PER U.S.B.T. BOOK 3, PAGE 483, ENTRY NO. 189
- (117) FOUND 5/8" I.R. WYPC MARKED "PLS 1678", ORIGIN UNCERTAIN; N0017'52"E 1.85'
- (118) FOUND 5/8" I.R. WITH 1-1/2" ALUMINUM CAP MARKED "PLS 2692 CH2M HILL" PER SN 28410
- (119) FOUND BRASS SCREW WITH 3/4" BRASS WASHER MARKED "PLS 1678", ORIGIN UNCERTAIN; N0017'52"E 1.92'
- (120) FOUND 5/8" I.R. WYPC MARKED "PLS 1678", ORIGIN UNCERTAIN (PP 2001-058 CALLS FOR BRASS SCREW & WASHER)
- (122) FOUND BRASS SCREW WITH 3/4" BRASS WASHER MARKED "PLS 1678", PER PP 2001-058
- (129) FOUND BRASS SCREW WITH 3/4" BRASS WASHER MARKED "PLS 1678", PER PP 2001-058
- (134) FOUND 1" BRASS DISK MARKED "LS 58833" PER PP 2010-009

CURVE TABLE

CURVE	LENGTH	RADIUS	DELTA	CHORD BEARING	CHORD
C1	85.91'	55.00'	89°29'34"	S44°57'21"E	77.44'
	(85.90")R1		(89°29'18")R1	(S44°57'29"E)R1	(77.43')R1
C2	63.19'	40.00'	90°30'34"	S45°02'43"W	56.82'
	(90°30'59")R1		(S45°02'39"W)R1		

LEGEND

- FOUND MONUMENT AS NOTED IN DESCRIPTIONS
- SET 5/8" X 30" I.R. WITH YELLOW PLASTIC CAP MARKED "NORTHWEST SURVEYING INC"
- ⊕ SET 1-1/8" COPPER DISK MARKED "FIELD LS2844" IN CONCRETE
- I.R. IRON ROD
- WYPC WITH YELLOW PLASTIC CAP
- SN SURVEY NUMBER, WASHINGTON COUNTY SURVEY RECORDS
- PP PARTITION PLAT NO., WASHINGTON COUNTY PLAT RECORDS
- U.S.B.T. BEARING TREE RECORDS, WASHINGTON COUNTY SURVEY RECORDS
- ()R1 RECORD INFORMATION PER PP 2001-058
- ()R2 RECORD INFORMATION PER SN 28410
- ()R3 RECORD INFORMATION PER PP 2010-009

NARRATIVE

THE PURPOSE OF THIS SURVEY IS TO MONUMENT THE PROPOSED ADJUSTED PROPERTY LINES BETWEEN PARCELS 1, 2 AND 3 OF PARTITION PLAT NO. 2001-058 IN CONJUNCTION WITH CITY OF TUALATIN CASE FILE NO. PLA16-0006. THE PROPERTIES IN THEIR CURRENT CONFIGURATIONS ARE DESCRIBED IN DOCUMENT NO. 2014-045332 (PARCEL 3), 2014-045333 (PARCEL 1) AND 2014-045334 (PARCEL 2), WASHINGTON COUNTY DEED RECORDS.

THE BASIS OF BEARINGS IS ALONG THE NORTH LINE OF THE NORTHEAST ONE-QUARTER OF SECTION 22 BETWEEN MONUMENTS (116) AND (118) HOLDING THE RECORD BEARING PER PARTITION PLAT NO. 2001-058. THIS LINE WAS OFFSET SOUTHERLY 32.00 FEET TO ESTABLISH THE SOUTHERLY RIGHT-OF-WAY LINE OF SW TUALATIN ROAD. RECORD PLAT INFORMATION AND MONUMENT (114) WERE HELD FOR THE 0.06 FOOT SEGMENT OF THE NORTH LINE AT THE NORTHWEST CORNER OF THE EXTERIOR BOUNDARY. MONUMENTS (116) AND (118) WERE HELD FOR THE WEST LINE OF THE EXTERIOR BOUNDARY. THE EASTERLY SEGMENT OF THE SOUTHERLY EXTERIOR BOUNDARY WAS ESTABLISHED HOLDING MONUMENTS (122) AND (129). THE ANGLE POINT ON THE SOUTH LINE WAS ESTABLISHED AT RECORD PLAT DISTANCE ON AN EXTENSION OF SAID EASTERLY SEGMENT FROM MONUMENT (122). THE DISTANCE BETWEEN MONUMENTS (122) AND (134) CHECK MUCH BETTER WITH EACH OTHER VERSUS EITHER OF THEM WITH MONUMENT (129). WHILE GOOD FOR LINE, I CONCLUDED THAT MONUMENT (129) IS OUT OF POSITION IN AN EAST-WEST DIRECTION AND THEREFORE DID NOT HOLD IT TO ESTABLISH THE ANGLE POINT. THE WESTERLY SEGMENT OF THE EXTERIOR BOUNDARY WAS ESTABLISHED HOLDING MONUMENT (134) AND THE ESTABLISHED ANGLE POINT. THE EAST LINE OF THE EXTERIOR BOUNDARY WAS ESTABLISHED HOLDING MONUMENTS (120) AND A CALCULATED CURVE BEGINNING AT MONUMENT (122) THAT IS TANGENT TO SAID EASTERLY SEGMENT. AT THE NORTHEAST CORNER OF THE EXTERIOR BOUNDARY, A CURVE TANGENT TO THE NORTH AND EAST LINES WAS CALCULATED HOLDING THE PLAT RADIUS.

MONUMENTS FOR THE INTERIOR CORNERS OF THE PLATTED PARCELS WERE NOT TIED AS THESE LINES ARE BEING ADJUSTED. MONUMENTS (117) AND (119) WERE LIKELY SET AS PART OF THE ORIGINAL PLAT BUT ARE SIGNIFICANTLY OUT OF POSITION.

PREPARED FOR
 LAM RESEARCH CORPORATION
 4650 CUSHING PARKWAY
 FREMONT, CA 94538

JOB NAME:	LAM PLA
JOB NUMBER:	1344
DRAWN BY:	SFF
CHECKED BY:	CHS
DRAWING NO.:	1344 PLA ROS

BOUNDARY TOPOGRAPHIC CONSTRUCTION CADASTRAL
 1815 NW 169th PLACE, SUITE 2090
 BEAVERTON, OR 97006
 PHONE: 503-848-2127 FAX: 503-848-2179
 www.nwsrvy.com