



Fiscal Year 2020 – 2021 Proposed Budget
Second Budget Committee Meeting – May 20, 2020

Tonight's Agenda

- Approval of previous meeting minutes
- Public Hearing – State Revenue Sharing
- Questions since meeting of May 6th
- Discussion of FY 2020-2021 Budget
- Public Comments
- Consideration of Budget Approval
- Adjourn



Public Hearing – State Revenue Sharing

- ORS 221.770 requires two public hearings in order to receive apportionment of liquor taxes
 - Before the Budget Committee on possible uses of funds
 - Before the City Council on proposed uses of funds
- City is estimated to receive \$413,890 in FY 20/21
- Revenue is not restricted and is used for general city operations
- Cigarette, marijuana, gas and remaining liquor taxes are not covered by this public hearing





Fiscal Year 2020 – 2021 Proposed Budget
Continue Review of Proposed Budget

Funds to Discuss

Fund Name	Pages	Revenue	Expenditures
Building Fund	93 – 97	Page 95	Pages 96 - 97
Water Operating Fund	98 – 102	Page 100	Pages 101 - 102
Sewer Operating Fund	103 – 106	Page 104	Pages 105 – 106
Stormwater Operating Fund	107 – 110	Page 108	Pages 109 - 110
Road Operating Fund	111 – 114	Page 112	Pages 113 – 114
Road Utility Fee Fund	115 – 117	Page 116	Page 117
Park Development Fund	133 – 135	Page 134	Page 135
Transportation Projects Fund	136 – 138	Page 137	Page 138
Tualatin City Services Building Fund	139 – 141	Page 140	Page 141
Vehicle Replacement Fund	142 – 144	Page 143	Page 144
Debt Service Funds	150 – 155	Pages 151 & 154	Pages 152 & 155



Funds to Discuss

Fund Name	Pages	Revenue	Expenditures
General Fund	51 - 92	Pages 51 - 53	Pages 54 - 92
<ul style="list-style-type: none"> ➤ Expenditures <ul style="list-style-type: none"> ➤ City Council ➤ Administration ➤ Finance ➤ Municipal Court ➤ Legal ➤ Information Services ➤ Maintenance Services ➤ Community Development ➤ Engineering ➤ Police ➤ Parks and Recreation ➤ Parks Maintenance ➤ Library ➤ Non-Departmental 			<ul style="list-style-type: none"> Page 55 Page 58 Page 60 Page 62 Page 64 Page 66 Pages 69 - 70 Page 73 Page 75 Pages 78 - 79 Pages 82 - 83 Page 86 Page 89 Pages 91 - 92



Common Themes

- Personal Services Expenditures
 - Full and Part Time Salaries
 - Health and dental insurance premiums
 - PERS
- Expenditures per Replacement Schedules:
 - Personal Computer/Laptop in Information Services
 - Small Tools in Public Works
 - Library Equipment
- Transfers In to Utility Operating Funds
- Transfers from funds to repay Tualatin City Services Building Loan
- Interest Earnings
- Utility Rate Revenues



Proposed Residential Utility Rates

		FY 19/20	FY 20/21	Change
Water:				
- 5/8" x 3/4" meter	Facilities Charge	\$ 4.31	\$ 4.49	\$ 0.18
- 8 CCF used	Service Charge	\$ 4.36	\$ 4.55	\$ 0.19
- Rates set by City Council	Consumption Charge Per CCF \$ 3.20	\$ 24.56	\$ 25.61	\$ 1.04
	Monthly Total	\$ 33.22	\$ 34.63	\$ 1.41
Sewer:				
- 1 Dwelling Unit (DU)	Regional Base Charge Per DU	\$ 25.11	\$ 25.11	\$ -
- Winter average water consumption = 8 CCF	Regional Use Charge Per CCF \$ 1.66	\$ 13.29	\$ 13.29	\$ -
- Clean Water Services sets Regional rates;	Local Base Charge Per EDU	\$ 6.53	\$ 6.53	\$ -
- Tualatin sets Local rates	Local Use Charge Per CCF \$ 0.444	\$ 3.55	\$ 3.55	\$ -
	Monthly Total	\$ 48.49	\$ 48.49	\$ -
Stormwater:				
- 1 Equivalent Surface Unit (ESU) = 2,640 Sq Ft = 1 house	Regional SWM Per ESU	\$ 2.31	\$ 2.31	\$ -
- Clean Water Services sets Regional rates	Local SWM Per ESU	\$ 7.93	\$ 7.93	\$ -
	Monthly Total	\$ 10.24	\$ 10.24	\$ -
Road Maintenance:				
- Rates set by City Council	Road Utility Fee per Single Family Residence	\$ 2.12	\$ 2.19	\$ 0.07
- 1/7th goes to street light operation	Sidewalk/StreetTree Reverse Frontage	\$ 3.45	\$ 3.56	\$ 0.12
	Monthly Total	\$ 5.58	\$ 5.76	\$ 0.19
Net Change		\$ 97.53	\$ 99.13	\$ 1.60
All new rates take effect on July 1 (Sewer and Stormwater rate increases will be reviewed in the Fall)				



General Fund Capital Outlay

- Police Vehicles
- Library Public Furniture Replacement
- 60” Riding Mower
- Atfaliti Park Sports Court Resurfacing
- Commons and Community Park Restroom Renovations
- Jurgens Park Playground Surface Replacement
- Ki-a-Kuts Pedestrian Bridge Repairs
- Stoneridge Park Renovation – Planning and Redesign



Utility Funds Capital Outlay

- Road Operating Fund
 - Borland Road Improvement
 - Herman Road Widening (Tualatin to Teton) Design
 - Transportation System Plan Update
- Water Operating Fund
 - Blake Street to 115th Water Line
 - SCADA System Improvements
 - Tualatin-Sherwood Road Water Relocation
 - B1 Water Reservoir: Interior/Exterior



Utility Funds Capital Outlay

- Sewer Operating Fund
 - 65th Avenue/Nyberg Sewer Trunk Line
- Stormwater Operating Fund
 - Storm Pipe Replacement
 - Sweek Drive/Emery Zidele Retention Pond
 - Venetia Water Quality Facility



Fund Name	Pages	Revenue	Expenditures
Building Fund	93 – 97	Page 95	Pages 96 - 97
Water Operating Fund	98 – 102	Page 100	Pages 101 - 102
Sewer Operating Fund	103 – 106	Page 104	Pages 105 – 106
Stormwater Operating Fund	107 – 110	Page 108	Pages 109 - 110
Road Operating Fund	111 – 114	Page 112	Pages 113 – 114
Road Utility Fee Fund	115 – 117	Page 116	Page 117
Park Development Fund	133 – 135	Page 134	Page 135
Transportation Projects Fund	136 – 138	Page 137	Page 138
Tualatin City Services Building Fund	139 – 141	Page 140	Page 141
Vehicle Replacement Fund	142 – 144	Page 143	Page 144
Debt Service Funds	150 – 155	Pages 151 & 154	Pages 152 & 155



Building Fund



Fund Name	Pages	Revenue	Expenditures
Building Fund	93 – 97	Page 95	Pages 96 - 97
Water Operating Fund	98 – 102	Page 100	Pages 101 - 102
Sewer Operating Fund	103 – 106	Page 104	Pages 105 – 106
Stormwater Operating Fund	107 – 110	Page 108	Pages 109 - 110
Road Operating Fund	111 – 114	Page 112	Pages 113 – 114
Road Utility Fee Fund	115 – 117	Page 116	Page 117
Park Development Fund	133 – 135	Page 134	Page 135
Transportation Projects Fund	136 – 138	Page 137	Page 138
Tualatin City Services Building Fund	139 – 141	Page 140	Page 141
Vehicle Replacement Fund	142 – 144	Page 143	Page 144
Debt Service Funds	150 – 155	Pages 151 & 154	Pages 152 & 155



Loan Repayment from Park Development Fund



Drinking Water Services Fact Sheet: Creating a Water System Operations and Maintenance Manual

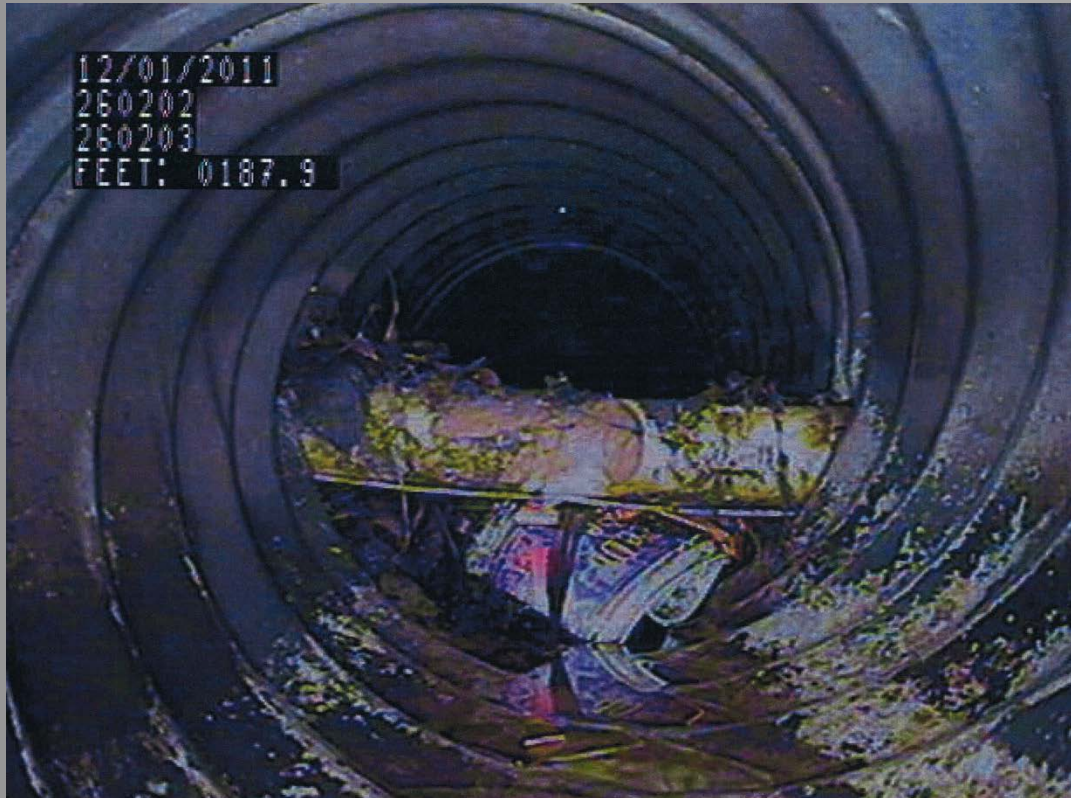


Fund Name	Pages	Revenue	Expenditures
Building Fund	93 – 97	Page 95	Pages 96 - 97
Water Operating Fund	98 – 102	Page 100	Pages 101 - 102
Sewer Operating Fund	103 – 106	Page 104	Pages 105 – 106
Stormwater Operating Fund	107 – 110	Page 108	Pages 109 - 110
Road Operating Fund	111 – 114	Page 112	Pages 113 – 114
Road Utility Fee Fund	115 – 117	Page 116	Page 117
Park Development Fund	133 – 135	Page 134	Page 135
Transportation Projects Fund	136 – 138	Page 137	Page 138
Tualatin City Services Building Fund	139 – 141	Page 140	Page 141
Vehicle Replacement Fund	142 – 144	Page 143	Page 144
Debt Service Funds	150 – 155	Pages 151 & 154	Pages 152 & 155



65th/Nyberg Trunk Line

Sewer Lateral Repair (R&M – Systems)



Fund Name	Pages	Revenue	Expenditures
Building Fund	93 – 97	Page 95	Pages 96 - 97
Water Operating Fund	98 – 102	Page 100	Pages 101 - 102
Sewer Operating Fund	103 – 106	Page 104	Pages 105 – 106
Stormwater Operating Fund	107 – 110	Page 108	Pages 109 - 110
Road Operating Fund	111 – 114	Page 112	Pages 113 – 114
Road Utility Fee Fund	115 – 117	Page 116	Page 117
Park Development Fund	133 – 135	Page 134	Page 135
Transportation Projects Fund	136 – 138	Page 137	Page 138
Tualatin City Services Building Fund	139 – 141	Page 140	Page 141
Vehicle Replacement Fund	142 – 144	Page 143	Page 144
Debt Service Funds	150 – 155	Pages 151 & 154	Pages 152 & 155



Camel Truck Replacement



Fund Name	Pages	Revenue	Expenditures
Building Fund	93 – 97	Page 95	Pages 96 - 97
Water Operating Fund	98 – 102	Page 100	Pages 101 - 102
Sewer Operating Fund	103 – 106	Page 104	Pages 105 – 106
Stormwater Operating Fund	107 – 110	Page 108	Pages 109 - 110
Road Operating Fund	111 – 114	Page 112	Pages 113 – 114
Road Utility Fee Fund	115 – 117	Page 116	Page 117
Park Development Fund	133 – 135	Page 134	Page 135
Transportation Projects Fund	136 – 138	Page 137	Page 138
Tualatin City Services Building Fund	139 – 141	Page 140	Page 141
Vehicle Replacement Fund	142 – 144	Page 143	Page 144
Debt Service Funds	150 – 155	Pages 151 & 154	Pages 152 & 155



Road Operating Revenue



Grants - Other Grant Revenue	-	625,000
State Gas Tax	2,016,680	2,014,070
Washington County Gas Tax	92,730	88,065
Vehicle License Fee - WashCo	400,000	400,000
Vehicle License Fee - ClackCo	60,000	60,000
INTERGOVERNMENTAL	2,569,410	3,187,135
Interest on Investments	38,950	39,730
INVESTMENT EARNINGS	38,950	39,730
Other Misc Income	1,172,500	-
MISCELLANEOUS	1,172,500	-

Other Misc Income	Herman Rd Project- RFFA grant	625,000
Other Misc Income	Herman Rd Project- MSTIP grant	70,000
Other Misc Income	Sagert St Project- CDBG from WashCo	111,000
Other Misc Income	Borland Rd Improvement- Clack. Co.	366,500

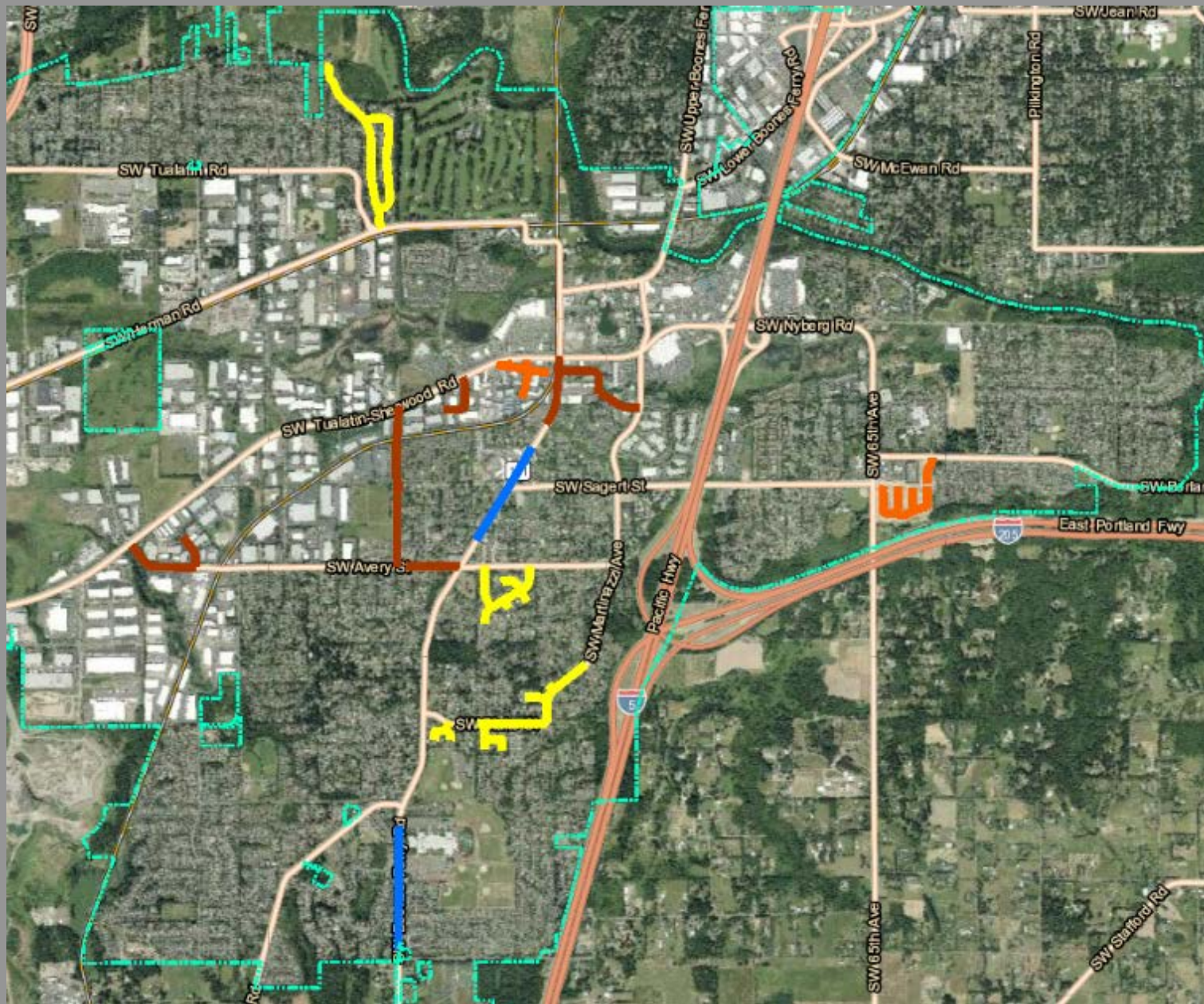


Fund Name	Pages	Revenue	Expenditures
Building Fund	93 – 97	Page 95	Pages 96 - 97
Water Operating Fund	98 – 102	Page 100	Pages 101 - 102
Sewer Operating Fund	103 – 106	Page 104	Pages 105 – 106
Stormwater Operating Fund	107 – 110	Page 108	Pages 109 - 110
Road Operating Fund	111 – 114	Page 112	Pages 113 – 114
Road Utility Fee Fund	115 – 117	Page 116	Page 117
Park Development Fund	133 – 135	Page 134	Page 135
Transportation Projects Fund	136 – 138	Page 137	Page 138
Tualatin City Services Building Fund	139 – 141	Page 140	Page 141
Vehicle Replacement Fund	142 – 144	Page 143	Page 144
Debt Service Funds	150 – 155	Pages 151 & 154	Pages 152 & 155



2020 Pavement Maintenance Program

-  Overlay
-  Slurry Seal
-  Crack Seal
-  Seal Coat



Fund Name	Pages	Revenue	Expenditures
Building Fund	93 – 97	Page 95	Pages 96 - 97
Water Operating Fund	98 – 102	Page 100	Pages 101 - 102
Sewer Operating Fund	103 – 106	Page 104	Pages 105 – 106
Stormwater Operating Fund	107 – 110	Page 108	Pages 109 - 110
Road Operating Fund	111 – 114	Page 112	Pages 113 – 114
Road Utility Fee Fund	115 – 117	Page 116	Page 117
Park Development Fund	133 – 135	Page 134	Page 135
Transportation Projects Fund	136 – 138	Page 137	Page 138
Tualatin City Services Building Fund	139 – 141	Page 140	Page 141
Vehicle Replacement Fund	142 – 144	Page 143	Page 144
Debt Service Funds	150 – 155	Pages 151 & 154	Pages 152 & 155





Commons on the Tualatin – Parks SDC

Park Development Fund Capital Outlay

- Commons Fountain Renovation
- Tualatin River Greenway Trail Extension



Fund Name	Pages	Revenue	Expenditures
Building Fund	93 – 97	Page 95	Pages 96 - 97
Water Operating Fund	98 – 102	Page 100	Pages 101 - 102
Sewer Operating Fund	103 – 106	Page 104	Pages 105 – 106
Stormwater Operating Fund	107 – 110	Page 108	Pages 109 - 110
Road Operating Fund	111 – 114	Page 112	Pages 113 – 114
Road Utility Fee Fund	115 – 117	Page 116	Page 117
Park Development Fund	133 – 135	Page 134	Page 135
Transportation Projects Fund	136 – 138	Page 137	Page 138
Tualatin City Services Building Fund	139 – 141	Page 140	Page 141
Vehicle Replacement Fund	142 – 144	Page 143	Page 144
Debt Service Funds	150 – 155	Pages 151 & 154	Pages 152 & 155



Transportation Bond Projects



www.tualatinmovingforward.com



Congestion Relief



Neighborhood Safety



Safe Access to Schools

- 118th & Herman Rd
- 95th & Avery
- Boones Ferry & Alabama crossing
- Boones Ferry sidewalk infill & bike lanes
- Garden Corner Curves
- Hwy 99: Pony Ridge to 124th sidewalks
- Martinazzi/Sagert signal
- Myslony, 112th to 124th
- Neighborhood Traffic Safety Program
- Tualatin Rd: Sweek to Park
- Tualatin-Sherwood Rd: Martinazzi to I-5



Fund Name	Pages	Revenue	Expenditures
Building Fund	93 – 97	Page 95	Pages 96 - 97
Water Operating Fund	98 – 102	Page 100	Pages 101 - 102
Sewer Operating Fund	103 – 106	Page 104	Pages 105 – 106
Stormwater Operating Fund	107 – 110	Page 108	Pages 109 - 110
Road Operating Fund	111 – 114	Page 112	Pages 113 – 114
Road Utility Fee Fund	115 – 117	Page 116	Page 117
Park Development Fund	133 – 135	Page 134	Page 135
Transportation Projects Fund	136 – 138	Page 137	Page 138
Tualatin City Services Bldg Fund	139 – 141	Page 140	Page 141
Vehicle Replacement Fund	142 – 144	Page 143	Page 144
Debt Service Funds	150 – 155	Pages 151 & 154	Pages 152 & 155



Tualatin City Services/City Offices



Fund Name	Pages	Revenue	Expenditures
Building Fund	93 – 97	Page 95	Pages 96 - 97
Water Operating Fund	98 – 102	Page 100	Pages 101 - 102
Sewer Operating Fund	103 – 106	Page 104	Pages 105 – 106
Stormwater Operating Fund	107 – 110	Page 108	Pages 109 - 110
Road Operating Fund	111 – 114	Page 112	Pages 113 – 114
Road Utility Fee Fund	115 – 117	Page 116	Page 117
Park Development Fund	133 – 135	Page 134	Page 135
Transportation Projects Fund	136 – 138	Page 137	Page 138
Tualatin City Services Building Fund	139 – 141	Page 140	Page 141
Vehicle Replacement Fund	142 – 144	Page 143	Page 144
Debt Service Funds	150 – 155	Pages 151 & 154	Pages 152 & 155



Fund Name	Pages	Revenue	Expenditures
Building Fund	93 – 97	Page 95	Pages 96 - 97
Water Operating Fund	98 – 102	Page 100	Pages 101 - 102
Sewer Operating Fund	103 – 106	Page 104	Pages 105 – 106
Stormwater Operating Fund	107 – 110	Page 108	Pages 109 - 110
Road Operating Fund	111 – 114	Page 112	Pages 113 – 114
Road Utility Fee Fund	115 – 117	Page 116	Page 117
Park Development Fund	133 – 135	Page 134	Page 135
Transportation Projects Fund	136 – 138	Page 137	Page 138
Tualatin City Services Building Fund	139 – 141	Page 140	Page 141
Vehicle Replacement Fund	142 – 144	Page 143	Page 144
Debt Service Funds	150 – 155	Pages 151 & 154	Pages 152 & 155



Fund Name	Pages	Revenue	Expenditures
General Fund	51 - 92	Pages 51 - 53	Pages 54 - 92
<ul style="list-style-type: none"> ➤ Expenditures <ul style="list-style-type: none"> ➤ City Council ➤ Administration ➤ Finance ➤ Municipal Court ➤ Legal ➤ Information Services ➤ Maintenance Services ➤ Community Development ➤ Engineering ➤ Police ➤ Parks and Recreation ➤ Parks Maintenance ➤ Library ➤ Non-Departmental 	<ul style="list-style-type: none"> 54 -55 56 -58 59 -60 61 -62 63 -64 65 -66 67 -70 71 -73 74 -75 76 - 79 80 -83 84 -86 87 -89 90 -92 		<ul style="list-style-type: none"> Page 55 Page 58 Page 60 Page 62 Page 64 Page 66 Pages 69 - 70 Page 73 Page 75 Pages 78 - 79 Pages 82 - 83 Page 86 Page 89 Pages 91 - 92



Fund Name	Pages	Revenue	Expenditures
General Fund	51 - 92	Pages 51 - 53	Pages 54 - 92
<ul style="list-style-type: none"> ➤ Expenditures <ul style="list-style-type: none"> ➤ City Council ➤ Administration ➤ Finance ➤ Municipal Court ➤ Legal ➤ Information Services ➤ Maintenance Services ➤ Community Development ➤ Engineering ➤ Police ➤ Parks and Recreation ➤ Parks Maintenance ➤ Library ➤ Non-Departmental 	<ul style="list-style-type: none"> 54 -55 56 -58 59 -60 61 -62 63 -64 65 -66 67 -70 71 -73 74 -75 76 - 79 80 -83 84 -86 87 -89 90 -92 		<ul style="list-style-type: none"> Page 55 Page 58 Page 60 Page 62 Page 64 Page 66 Pages 69 - 70 Page 73 Page 75 Pages 78 - 79 Pages 82 - 83 Page 86 Page 89 Pages 91 - 92



COVID-19 Impacted Revenues

- Franchise Fees
- Business License Fees
- Motel Taxes (Transient Lodging Tax)
- Passport Execution Fees
- Fingerprint Fees
- GREAT Program
- Fines and Forfeitures
- Parks and Recreation Programs and Events
 - Still looking at revenue and expenditure impacts



Fund Name	Pages	Revenue	Expenditures
General Fund	51 - 92	Pages 51 - 53	Pages 54 - 92
<ul style="list-style-type: none"> ➤ Expenditures <ul style="list-style-type: none"> ➤ City Council ➤ Administration ➤ Finance ➤ Municipal Court ➤ Legal ➤ Information Services ➤ Maintenance Services ➤ Community Development ➤ Engineering ➤ Police ➤ Parks and Recreation ➤ Parks Maintenance ➤ Library ➤ Non-Departmental 	<ul style="list-style-type: none"> 54 -55 56 -58 59 -60 61 -62 63 -64 65 -66 67 -70 71 -73 74 -75 76 - 79 80 -83 84 -86 87 -89 90 -92 		<ul style="list-style-type: none"> Page 55 Page 58 Page 60 Page 62 Page 64 Page 66 Pages 69 - 70 Page 73 Page 75 Pages 78 - 79 Pages 82 - 83 Page 86 Page 89 Pages 91 - 92



Fund Name	Pages	Revenue	Expenditures
General Fund	51 - 92	Pages 51 - 53	Pages 54 - 92
<ul style="list-style-type: none"> ➤ Expenditures <ul style="list-style-type: none"> ➤ City Council ➤ Administration ➤ Finance ➤ Municipal Court ➤ Legal ➤ Information Services ➤ Maintenance Services ➤ Community Development ➤ Engineering ➤ Police ➤ Parks and Recreation ➤ Parks Maintenance ➤ Library ➤ Non-Departmental 	<ul style="list-style-type: none"> 54 -55 56 -58 59 -60 61 -62 63 -64 65 -66 67 -70 71 -73 74 -75 76 - 79 80 -83 84 -86 87 -89 90 -92 		<ul style="list-style-type: none"> Page 55 Page 58 Page 60 Page 62 Page 64 Page 66 Pages 69 - 70 Page 73 Page 75 Pages 78 - 79 Pages 82 - 83 Page 86 Page 89 Pages 91 - 92



Volunteer Services - Administration



Fund Name	Pages	Revenue	Expenditures
General Fund	51 - 92	Pages 51 - 53	Pages 54 - 92
<ul style="list-style-type: none"> ➤ Expenditures <ul style="list-style-type: none"> ➤ City Council ➤ Administration ➤ Finance ➤ Municipal Court ➤ Legal ➤ Information Services ➤ Maintenance Services ➤ Community Development ➤ Engineering ➤ Police ➤ Parks and Recreation ➤ Parks Maintenance ➤ Library ➤ Non-Departmental 	<ul style="list-style-type: none"> 54 -55 56 -58 59 -60 61 -62 63 -64 65 -66 67 -70 71 -73 74 -75 76 - 79 80 -83 84 -86 87 -89 90 -92 		<ul style="list-style-type: none"> Page 55 Page 58 Page 60 Page 62 Page 64 Page 66 Pages 69 - 70 Page 73 Page 75 Pages 78 - 79 Pages 82 - 83 Page 86 Page 89 Pages 91 - 92



Fund Name	Pages	Revenue	Expenditures
General Fund	51 - 92	Pages 51 - 53	Pages 54 - 92
<ul style="list-style-type: none"> ➤ Expenditures <ul style="list-style-type: none"> ➤ City Council ➤ Administration ➤ Finance ➤ Municipal Court ➤ Legal ➤ Information Services ➤ Maintenance Services ➤ Community Development ➤ Engineering ➤ Police ➤ Parks and Recreation ➤ Parks Maintenance ➤ Library ➤ Non-Departmental 	<ul style="list-style-type: none"> 54 -55 56 -58 59 -60 61 -62 63 -64 65 -66 67 -70 71 -73 74 -75 76 - 79 80 -83 84 -86 87 -89 90 -92 		<ul style="list-style-type: none"> Page 55 Page 58 Page 60 Page 62 Page 64 Page 66 Pages 69 - 70 Page 73 Page 75 Pages 78 - 79 Pages 82 - 83 Page 86 Page 89 Pages 91 - 92



Fund Name	Pages	Revenue	Expenditures
General Fund	51 - 92	Pages 51 - 53	Pages 54 - 92
<ul style="list-style-type: none"> ➤ Expenditures <ul style="list-style-type: none"> ➤ City Council ➤ Administration ➤ Finance ➤ Municipal Court ➤ Legal ➤ Information Services ➤ Maintenance Services ➤ Community Development ➤ Engineering ➤ Police ➤ Parks and Recreation ➤ Parks Maintenance ➤ Library ➤ Non-Departmental 	<ul style="list-style-type: none"> 54 -55 56 -58 59 -60 61 -62 63 -64 65 -66 67 -70 71 -73 74 -75 76 - 79 80 -83 84 -86 87 -89 90 -92 		<ul style="list-style-type: none"> Page 55 Page 58 Page 60 Page 62 Page 64 Page 66 Pages 69 - 70 Page 73 Page 75 Pages 78 - 79 Pages 82 - 83 Page 86 Page 89 Pages 91 - 92



Fund Name	Pages	Revenue	Expenditures
General Fund	51 - 92	Pages 51 - 53	Pages 54 - 92
<ul style="list-style-type: none"> ➤ Expenditures <ul style="list-style-type: none"> ➤ City Council ➤ Administration ➤ Finance ➤ Municipal Court ➤ Legal ➤ Information Services ➤ Maintenance Services ➤ Community Development ➤ Engineering ➤ Police ➤ Parks and Recreation ➤ Parks Maintenance ➤ Library ➤ Non-Departmental 	<ul style="list-style-type: none"> 54 -55 56 -58 59 -60 61 -62 63 -64 65 -66 67 -70 71 -73 74 -75 76 - 79 80 -83 84 -86 87 -89 90 -92 		<ul style="list-style-type: none"> Page 55 Page 58 Page 60 Page 62 Page 64 Page 66 Pages 69 - 70 Page 73 Page 75 Pages 78 - 79 Pages 82 - 83 Page 86 Page 89 Pages 91 - 92



Microsoft Exchange Server to Office 365 Migration



Fund Name	Pages	Revenue	Expenditures
General Fund	51 - 92	Pages 51 - 53	Pages 54 - 92
<ul style="list-style-type: none"> ➤ Expenditures <ul style="list-style-type: none"> ➤ City Council ➤ Administration ➤ Finance ➤ Municipal Court ➤ Legal ➤ Information Services ➤ Maintenance Services ➤ Community Development ➤ Engineering ➤ Police ➤ Parks and Recreation ➤ Parks Maintenance ➤ Library ➤ Non-Departmental 	<ul style="list-style-type: none"> 54 -55 56 -58 59 -60 61 -62 63 -64 65 -66 67 -70 71 -73 74 -75 76 - 79 80 -83 84 -86 87 -89 90 -92 		<ul style="list-style-type: none"> Page 55 Page 58 Page 60 Page 62 Page 64 Page 66 Pages 69 - 70 Page 73 Page 75 Pages 78 - 79 Pages 82 - 83 Page 86 Page 89 Pages 91 - 92



Fund Name	Pages	Revenue	Expenditures
General Fund	51 - 92	Pages 51 - 53	Pages 54 - 92
<ul style="list-style-type: none"> ➤ Expenditures <ul style="list-style-type: none"> ➤ City Council ➤ Administration ➤ Finance ➤ Municipal Court ➤ Legal ➤ Information Services ➤ Maintenance Services ➤ Community Develop. ➤ Engineering ➤ Police ➤ Parks and Recreation ➤ Parks Maintenance ➤ Library ➤ Non-Departmental 	<ul style="list-style-type: none"> 54 -55 56 -58 59 -60 61 -62 63 -64 65 -66 67 -70 71 -73 74 -75 76 - 79 80 -83 84 -86 87 -89 90 -92 		<ul style="list-style-type: none"> Page 55 Page 58 Page 60 Page 62 Page 64 Page 66 Pages 69 - 70 Page 73 Page 75 Pages 78 - 79 Pages 82 - 83 Page 86 Page 89 Pages 91 - 92



What is our future?

Help us advance Tualatin's future by updating our development goals and rules.

Photo credit: City of Tualatin staff

tualatin | 2040



TOURISM PROGRAM

GOAL

TO ENCOURAGE VISITOR ATTRACTION BY INVESTING THE TRANSIENT LODGING TAX IN FIVE KEY AREAS.



Fund Name	Pages	Revenue	Expenditures
General Fund	51 - 92	Pages 51 - 53	Pages 54 - 92
<ul style="list-style-type: none"> ➤ Expenditures <ul style="list-style-type: none"> ➤ City Council ➤ Administration ➤ Finance ➤ Municipal Court ➤ Legal ➤ Information Services ➤ Maintenance Services ➤ Community Development ➤ Engineering ➤ Police ➤ Parks and Recreation ➤ Parks Maintenance ➤ Library ➤ Non-Departmental 	<ul style="list-style-type: none"> 54 -55 56 -58 59 -60 61 -62 63 -64 65 -66 67 -70 71 -73 74 -75 76 - 79 80 -83 84 -86 87 -89 90 -92 		<ul style="list-style-type: none"> Page 55 Page 58 Page 60 Page 62 Page 64 Page 66 Pages 69 - 70 Page 73 Page 75 Pages 78 - 79 Pages 82 - 83 Page 86 Page 89 Pages 91 - 92



Fund Name	Pages	Revenue	Expenditures
General Fund	51 - 92	Pages 51 - 53	Pages 54 - 92
<ul style="list-style-type: none"> ➤ Expenditures <ul style="list-style-type: none"> ➤ City Council ➤ Administration ➤ Finance ➤ Municipal Court ➤ Legal ➤ Information Services ➤ Maintenance Services ➤ Community Development ➤ Engineering ➤ Police ➤ Parks and Recreation ➤ Parks Maintenance ➤ Library ➤ Non-Departmental 	<ul style="list-style-type: none"> 54 -55 56 -58 59 -60 61 -62 63 -64 65 -66 67 -70 71 -73 74 -75 76 - 79 80 -83 84 -86 87 -89 90 -92 		<ul style="list-style-type: none"> Page 55 Page 58 Page 60 Page 62 Page 64 Page 66 Pages 69 - 70 Page 73 Page 75 Pages 78 - 79 Pages 82 - 83 Page 86 Page 89 Pages 91 - 92



Fund Name	Pages	Revenue	Expenditures
General Fund	51 - 92	Pages 51 - 53	Pages 54 - 92
<ul style="list-style-type: none"> ➤ Expenditures <ul style="list-style-type: none"> ➤ City Council ➤ Administration ➤ Finance ➤ Municipal Court ➤ Legal ➤ Information Services ➤ Maintenance Services ➤ Community Development ➤ Engineering ➤ Police ➤ Parks and Recreation ➤ Parks Maintenance ➤ Library ➤ Non-Departmental 	<ul style="list-style-type: none"> 54 -55 56 -58 59 -60 61 -62 63 -64 65 -66 67 -70 71 -73 74 -75 76 - 79 80 -83 84 -86 87 -89 90 -92 		<ul style="list-style-type: none"> Page 55 Page 58 Page 60 Page 62 Page 64 Page 66 Pages 69 - 70 Page 73 Page 75 Pages 78 - 79 Pages 82 - 83 Page 86 Page 89 Pages 91 - 92





Fund Name	Pages	Revenue	Expenditures
General Fund	51 - 92	Pages 51 - 53	Pages 54 - 92
<ul style="list-style-type: none"> ➤ Expenditures <ul style="list-style-type: none"> ➤ City Council ➤ Administration ➤ Finance ➤ Municipal Court ➤ Legal ➤ Information Services ➤ Maintenance Services ➤ Community Development ➤ Engineering ➤ Police ➤ Parks and Recreation ➤ Parks Maintenance ➤ Library ➤ Non-Departmental 	<ul style="list-style-type: none"> 54 -55 56 -58 59 -60 61 -62 63 -64 65 -66 67 -70 71 -73 74 -75 76 - 79 80 -83 84 -86 87 -89 90 -92 		<ul style="list-style-type: none"> Page 55 Page 58 Page 60 Page 62 Page 64 Page 66 Pages 69 - 70 Page 73 Page 75 Pages 78 - 79 Pages 82 - 83 Page 86 Page 89 Pages 91 - 92



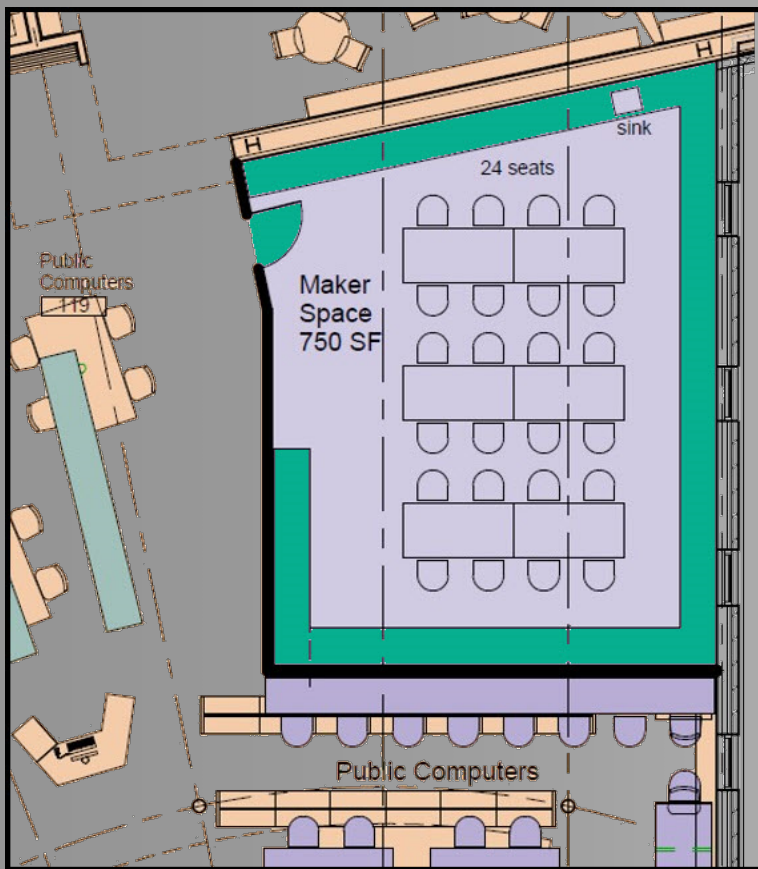


Fund Name	Pages	Revenue	Expenditures
General Fund	51 - 92	Pages 51 - 53	Pages 54 - 92
<ul style="list-style-type: none"> ➤ Expenditures <ul style="list-style-type: none"> ➤ City Council ➤ Administration ➤ Finance ➤ Municipal Court ➤ Legal ➤ Information Services ➤ Maintenance Services ➤ Community Development ➤ Engineering ➤ Police ➤ Parks and Recreation ➤ Parks Maintenance ➤ Library ➤ Non-Departmental 	<ul style="list-style-type: none"> 54 -55 56 -58 59 -60 61 -62 63 -64 65 -66 67 -70 71 -73 74 -75 76 - 79 80 -83 84 -86 87 -89 90 -92 		<ul style="list-style-type: none"> Page 55 Page 58 Page 60 Page 62 Page 64 Page 66 Pages 69 - 70 Page 73 Page 75 Pages 78 - 79 Pages 82 - 83 Page 86 Page 89 Pages 91 - 92



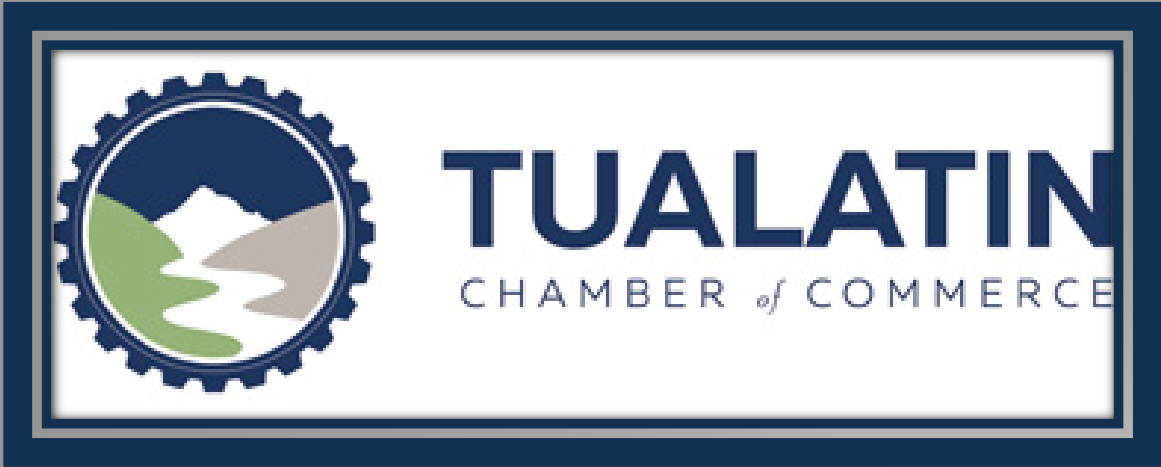


Library Self-Check Machines



Fund Name	Pages	Revenue	Expenditures
General Fund	51 - 92	Pages 51 - 53	Pages 54 - 92
<ul style="list-style-type: none"> ➤ Expenditures <ul style="list-style-type: none"> ➤ City Council ➤ Administration ➤ Finance ➤ Municipal Court ➤ Legal ➤ Information Services ➤ Maintenance Services ➤ Community Development ➤ Engineering ➤ Police ➤ Parks and Recreation ➤ Parks Maintenance ➤ Library ➤ Non-Departmental 	<ul style="list-style-type: none"> 54 -55 56 -58 59 -60 61 -62 63 -64 65 -66 67 -70 71 -73 74 -75 76 - 79 80 -83 84 -86 87 -89 90 -92 		<ul style="list-style-type: none"> Page 55 Page 58 Page 60 Page 62 Page 64 Page 66 Pages 69 - 70 Page 73 Page 75 Pages 78 - 79 Pages 82 - 83 Page 86 Page 89 Pages 91 - 92





May 2020 LIBRARY CALENDAR BILL PAY POLICE PARKS/REC

MAY 2020 LIBRARY CALENDAR BILL PAY POLICE PARKS/REC



General Account Reserve



City of Tualatin
Proposed Budget Amendments - Budget Committee
May 20, 2020

General Fund

	<u>Beginning Fund Balance</u>	<u>Computer Equip and Software</u>
Community Development - Trakt/Laserfiche interface	\$ 1,900	\$ 1,900
	<u>\$ 1,900</u>	<u>\$ 1,900</u>

	<u>Misc. Grants</u>	<u>Library Programs</u>
Library - Ready to Read Grant	\$ 4,525	\$ 4,525
	<u>\$ 4,525</u>	<u>\$ 4,525</u>

	<u>Beginning Fund Balance</u>	<u>Office Equipment and Furniture</u>
Library - Public Furniture Replacement	\$ 12,820	\$ 12,820
	<u>\$ 12,820</u>	<u>\$ 12,820</u>

<u>Water Operating Fund</u>	<u>Beginning Fund Balance</u>	<u>Transfer In - Water Development</u>	<u>Fund Projects</u>
Blake to 115th Waterline	\$ 67,000	\$ 33,000	\$ 100,000
	<u>\$ 67,000</u>	<u>\$ 33,000</u>	<u>\$ 100,000</u>

<u>Water Development Fund</u>	<u>Beginning Fund Balance</u>	<u>Transfer Out - Water Operating</u>
Blake to 115th Waterline	\$ 33,000	\$ 33,000
	<u>\$ 33,000</u>	<u>\$ 33,000</u>



Recommended Motions for Budget Approval

➤ **City of Tualatin Budget:**

- I move to approve the Fiscal Year 2020-2021 City of Tualatin budget, as amended, the property taxes it contains at the rate of \$2.2665 per \$1,000 of assessed value for operating purposes, and the amount of \$2,923,950 for payment of general obligation bond principal and interest.

➤ **Tualatin Development Commission Budget:**

- I move to approve the Fiscal Year 2020-2021 Tualatin Development Commission budget.



*Thank
you*

