

State of Our Partnership

City of Tualatin & Clean Water Services

November 10, 2025

Fiscal Year 2024-25



Get to Know Rick Shanley, Interim CEO/GM

- Formerly Chief Engineer & Water Technology Officer
- Shanley joined CWS as Treatment Plant Services Manager in 2013
- Held leadership roles in regulatory compliance strategies, conveyance engineering, and facilities and asset management engineering
- Over 30 years of experience as an environmental engineer, including experience with research, planning, design, and construction of infrastructure for wastewater conveyance and treatment
- Active in various professional societies and previously served as the president of the Pacific Northwest Clean Water Association



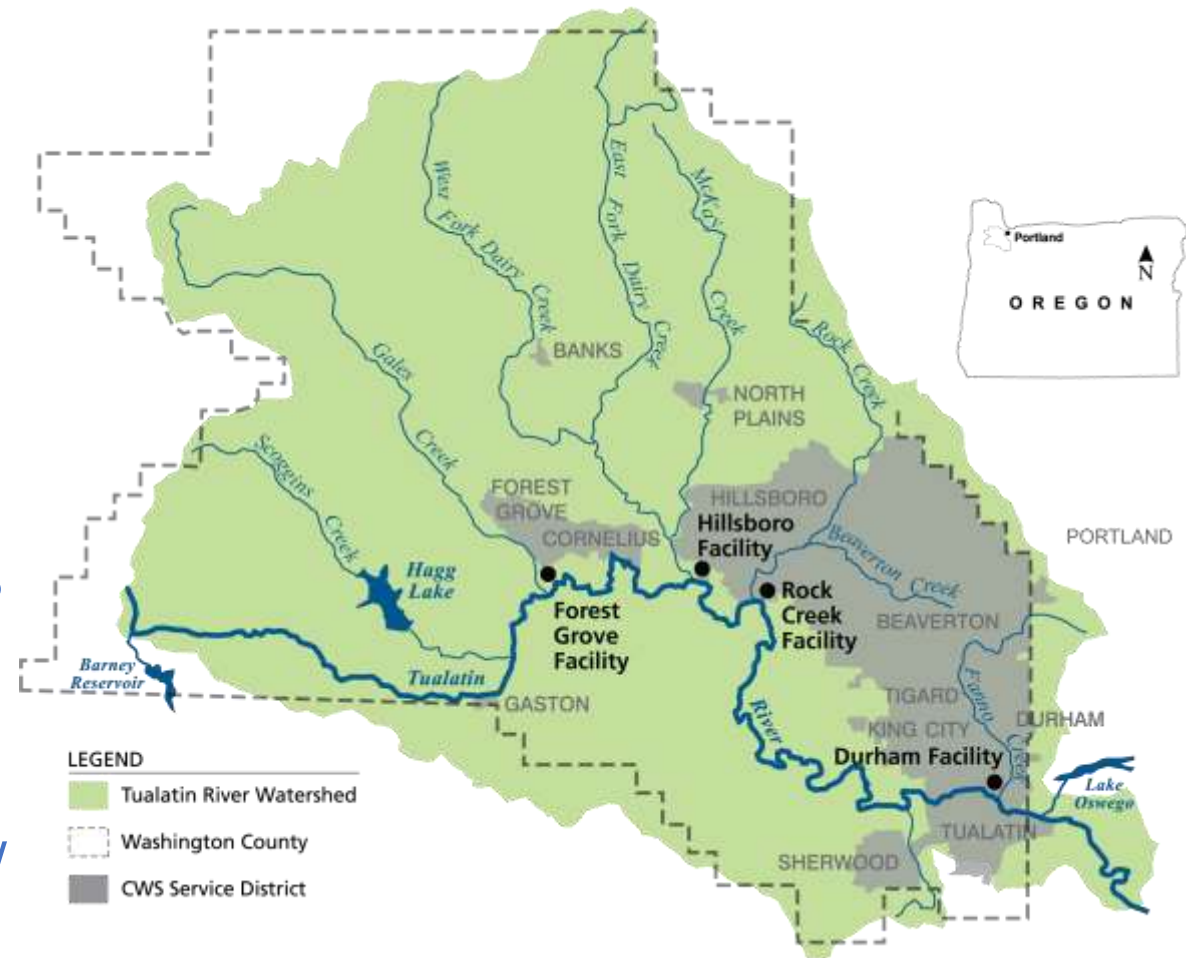
What Is Clean Water Services

- Wastewater and stormwater government utility serving more than 600,000 residents of urban Washington County
- 12 partner cities and Washington County
- Budget: \$752.2 million
- Holds nation's first integrated watershed-based permit
- Close working relationship with Washington County, but a separately managed and financed public utility under ORS 451
- Clean Water Services Advisory Commission
- 468 FTE employees



Who Receives Services from CWS

- Regional-only services
 - Beaverton, Cornelius, Forest Grove, Hillsboro, Sherwood, Tigard, Tualatin
- Regional services and local services
 - Urban unincorporated areas of Washington County and cities of Banks, Durham, Gaston, King City, North Plains
- Industrial services
 - Certain industrial customers in service area. Agreed-upon charges, right-of-way fees go to some cities



Regional Services

- **Regional services** provided to all customers in service area
 - Constructing, operating, maintaining treatment plants, sewage pump stations, pressure lines
 - Designing, building, maintaining sewer lines 24 inches and larger
 - Compliance reporting, oversight for National Pollutant Discharge Elimination System (NPDES) permit, including municipal separate storm sewer system (MS4)
 - Maintaining minimum stream flows
 - Service area restoration and enhancing stream corridors



Local Services

- **Local services** support operating and maintaining local collection system and 24-hour response
 - Designing, building, maintaining, repairing sewer lines 21 inches and smaller
 - ❖ Cleaning, inspecting sewer pipes
 - Designing, building, maintaining, repairing local stormwater facilities
 - ❖ Sweeping streets
 - ❖ Maintaining water quality facilities
 - ❖ Cleaning catch basins, water quality manholes



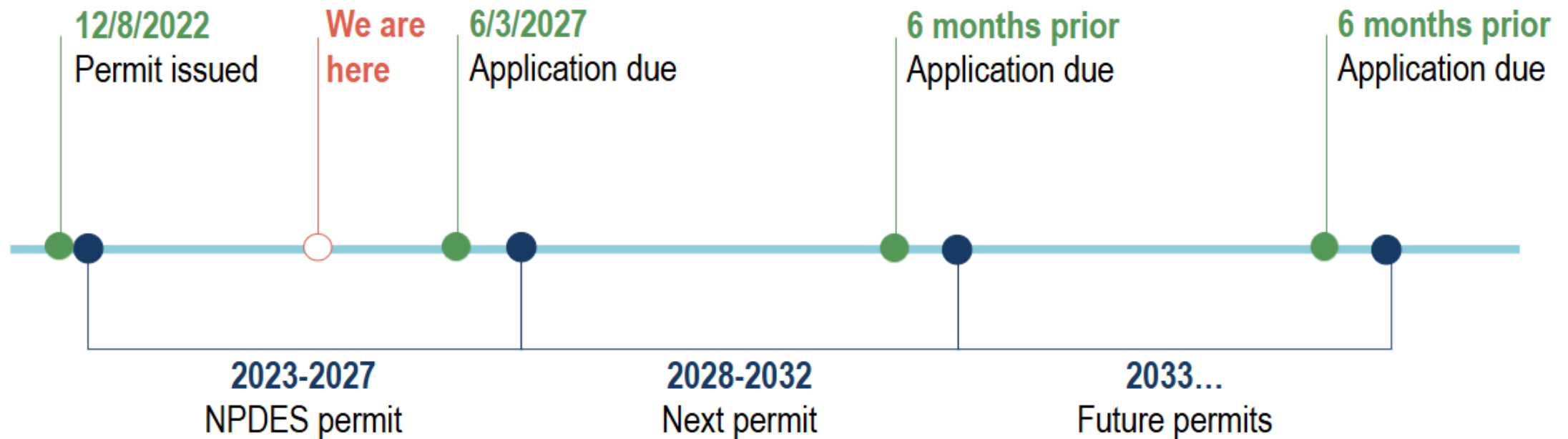
Five-Year Watershed-Based NPDES Permit

- Permit covers 4 water resource recovery facilities and municipal stormwater system
- Authorizes discharge to Tualatin River
- Establishes limits
- Requires self-monitoring
- Requires reporting
- Requires compliance schedules
- Regulates industries
- Regulates biosolids and recycled water
- Specifies penalties for noncompliance



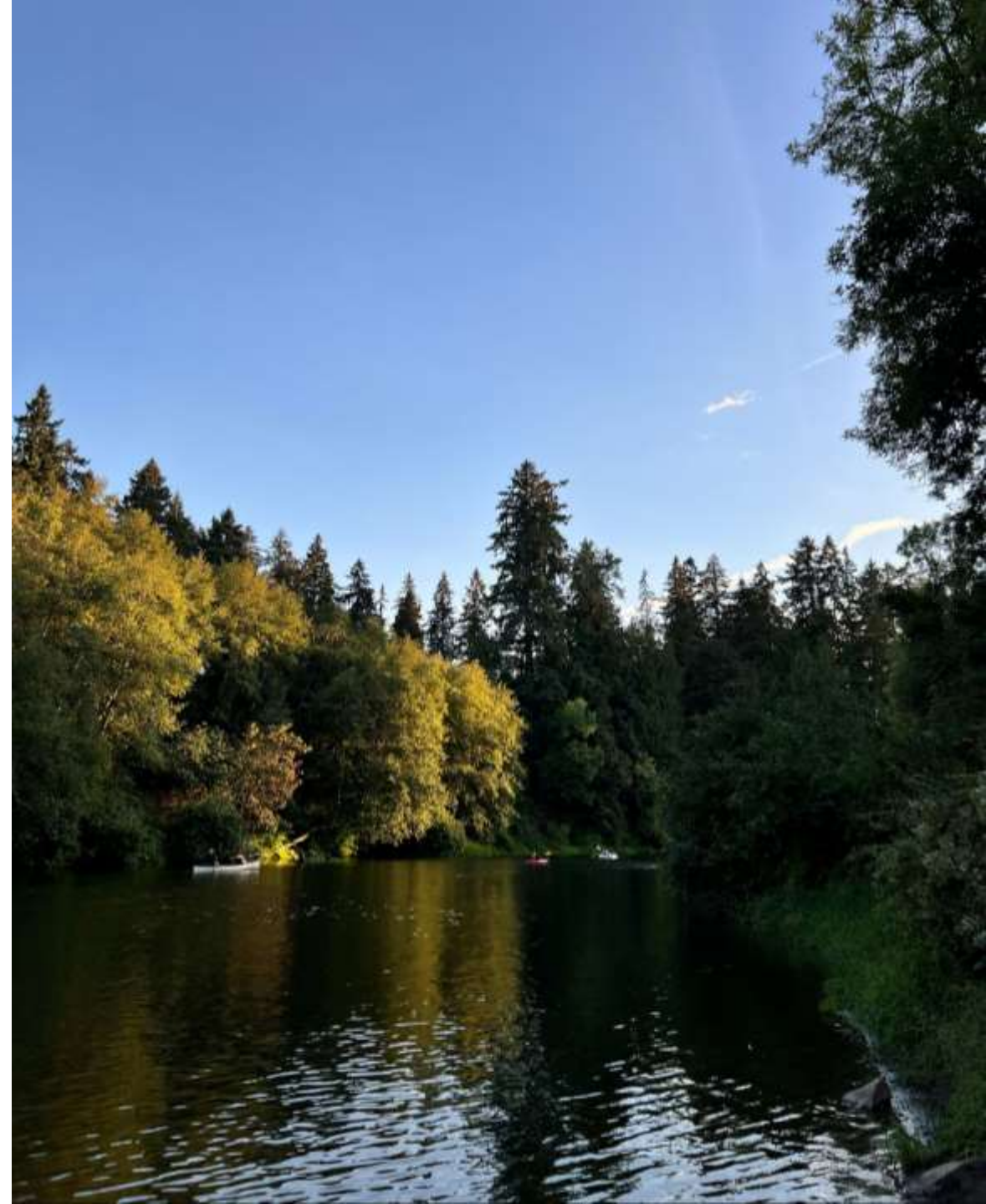
DEQ Permit Issuance Process and Schedule

Strategic Roadmap: Proactively address potential new issues



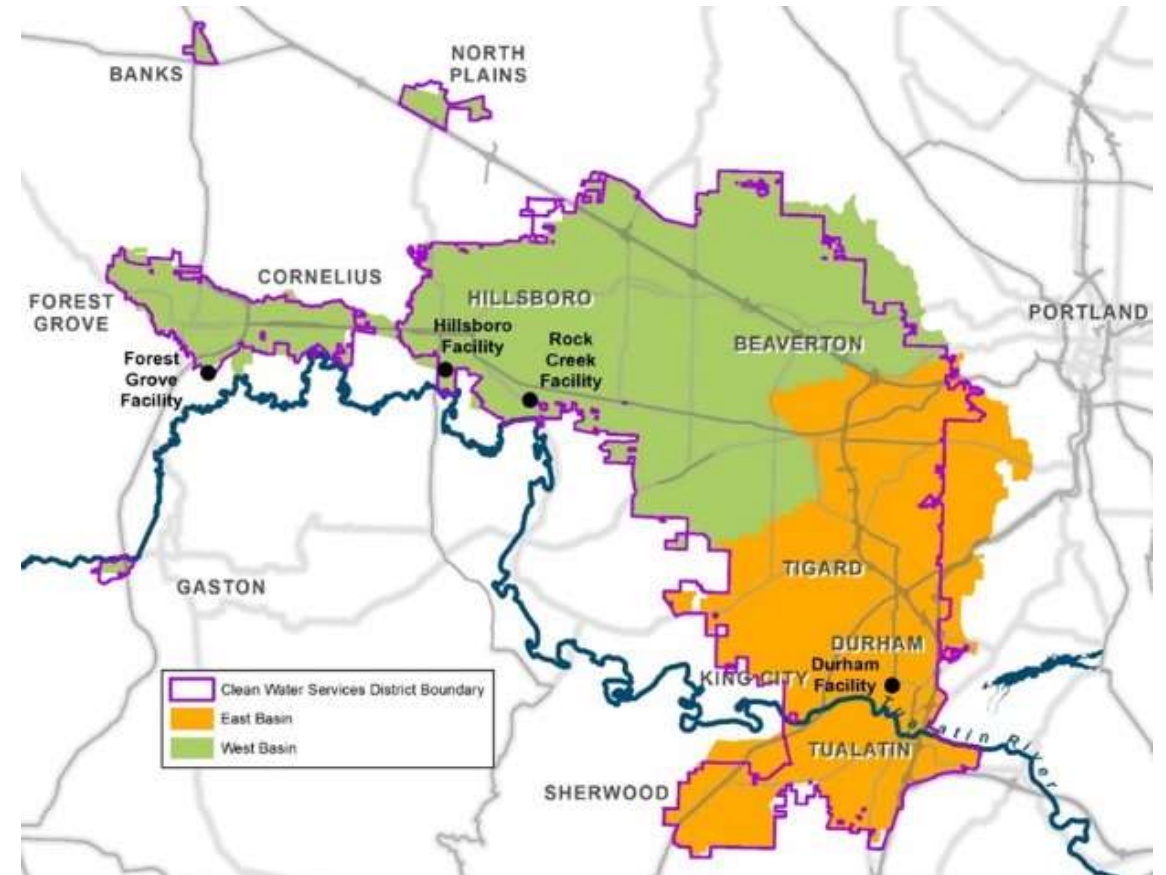
Tualatin Projects (FY25)

- Martinazzi Trunk: Priority 2
 - \$1,937,473
- Norwood Pump Station and forcemain
 - \$15,463
- Tonquin Pump Station and forcemain
 - \$232,360
- Durham WRRF repairs, replacements, and upgrades
 - \$9,729,104



Regional Planning: West Basin Master Plan

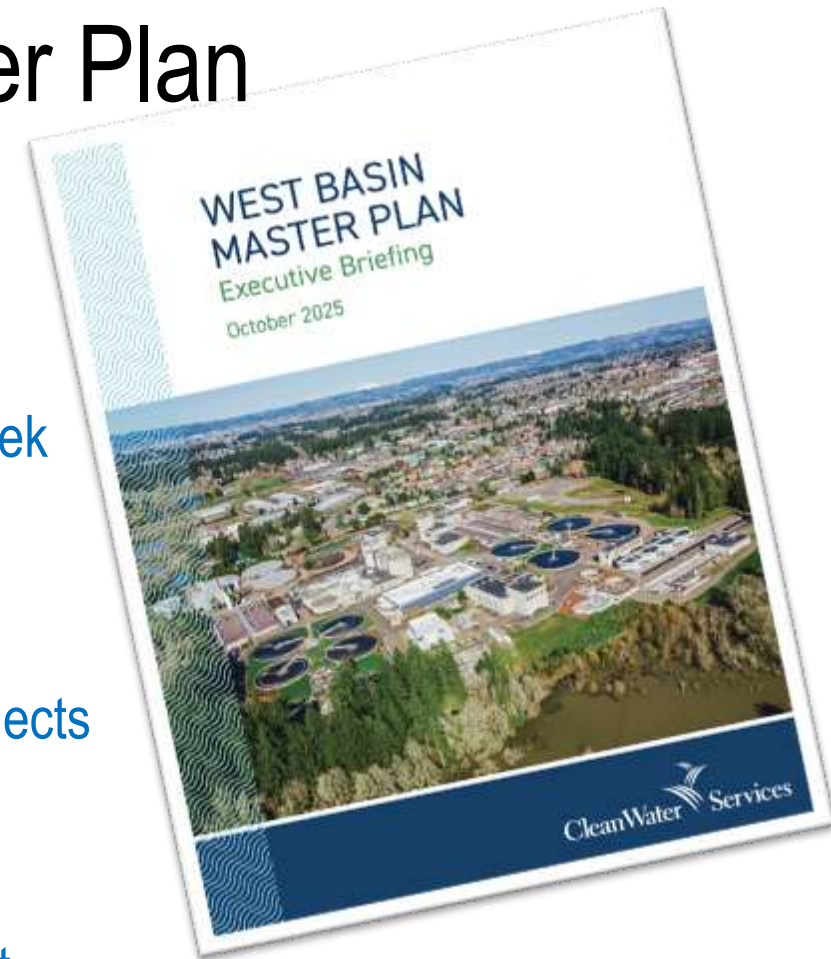
- Companion to the West Basin Master Plan
- Improvements to facilities and collection system to provide adequate capacity for current and future needs
- Integrated, long-term master plan for sanitary conveyance and water resource recovery facilities in the west basin
- Developed with cities, projecting growth while anticipating increasingly stringent regulatory requirements



Planning Outcomes: West Basin Master Plan

- \$920 million on conveyance projects through 2045
 - Major, multiphase pipeline projects include Turner Creek, Beaverton, Dawson, and Lower Rock Creek trunks
 - Major pump station projects include Dawson and Council Creek pump stations
 - Ongoing inflow and infiltration abatement and pipeline rehabilitation programs
 - Ongoing coordination with co-implementers for additional projects
- \$493 million on treatment plant improvements through 2045
 - Major capacity or rehabilitation projects at Rock Creek, Forest Grove, and Hillsboro water resource recovery facilities
 - Developed site plans to manage future use of space

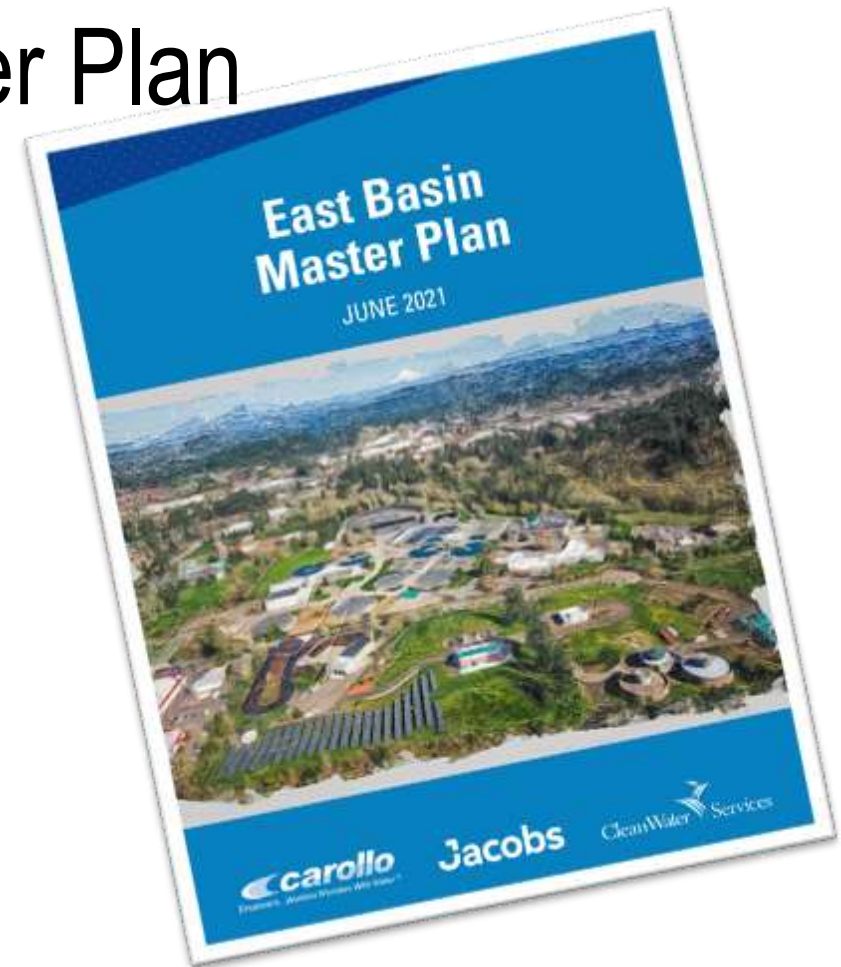
TOTAL \$1.413 billion



Planning Outcomes: East Basin Master Plan

- \$301 million on conveyance projects through
 - Major improvements to capacity and rehabilitation on the Fanno Interceptor
 - Trunk line improvements in Sherwood, Tualatin, King City
 - Construction of new pump stations in King City, Tualatin, Beaverton, Sherwood, Tigard
 - Inflow and infiltration abatement projects
- \$101 million on treatment plant improvements
 - Major projects include chemical clarifier upgrades (\$22.4 million), anaerobic digestion upgrades (\$13.7 million)
 - Secondary clarifier upgrades (\$64.6 million)
 - Reuse water improvements

TOTAL \$402 million



Tualatin Projects for FY26-FY30

- Martinazzi Trunk: Priority 2
 - \$700,000
- Martinazzi Trunk: Priority 3 and 4
 - \$2,579,000
- SW 103rd sanitary sewer upsizing
 - \$100,000
- Tualatin-Sherwood Road Teton Sewer Trunk upsizing
 - \$1,840,800
- Hedges Creek floodplain enhancement
 - \$850,000
- Tonquin Pump Station and forcemain
 - \$4,450,000
- SW Tualatin Pump Station and forcemain
 - \$900,000
- Durham WRRF repairs, replacements, and upgrades
 - \$66,756,000

5-Year Total: \$78,175,800

Billing Feasibility Study

- Identify and evaluate feasibility of alternatives to current system
- Identify and engage stakeholders
- Identify options for implementing income assistance and emergency assistance programs
- Outcome will be a report presenting alternatives to consider, including:
 - Alternatives such as risk, cost, resource requirements, and advantages/disadvantages
 - Transition timeline for any alternatives
 - Comparison matrix of the current billing system to alternatives identified, including initial cost and 10-year ongoing cost estimates
- Completion of study is estimated November 2026

Upcoming Permit Requirements: Deadline November 1, 2026

- Update specific stormwater sections of Design and Construction Standards
- Update Operating intergovernmental agreements with all cities and Washington County



Thank You

