



ARCHITECTURE DESIGN STUDIO

IMAGINING DOWNTOWN TUALATIN

BACKGROUND.

Architecture students from the University of Oregon designed fourteen projects located on four downtown sites. They imagined projects that address the following themes:

- Increasing residential density in the downtown core
- Strengthening walkability and pedestrian connectivity
- Reducing the dominance of automobile-oriented infrastructure and exploring multimodal alternatives
- Connecting downtown to nature and the riverfront park
- Creating a vibrant mixed-use civic center
- Designing accessible, age-friendly environments
- Responding to the downtown floodplain condition through different design solutions

YOUR CHARGE.

We are looking for you to identify design concepts and elements that you find compelling. Consider things like the building materials, landscaping features, and interactions between buildings and the streetscape. Building height, form, and massing may evoke strong reactions, as may proposed uses.

In short, imagine you are moving through the spaces rendered by the students and tell us what you would like to see brought into being.



IMAGINE THIS...

Shoppers from the market hall cross paths with neighbors tending to their gardens – the buildings buzz.



Gardens invite neighbors to gather outside

Taller buildings along a busy street acoustically shield the rest of the development



Warm wood unifies interior and exterior spaces



Tiered courtyards create multiple planes of activity

IMAGINE THIS...

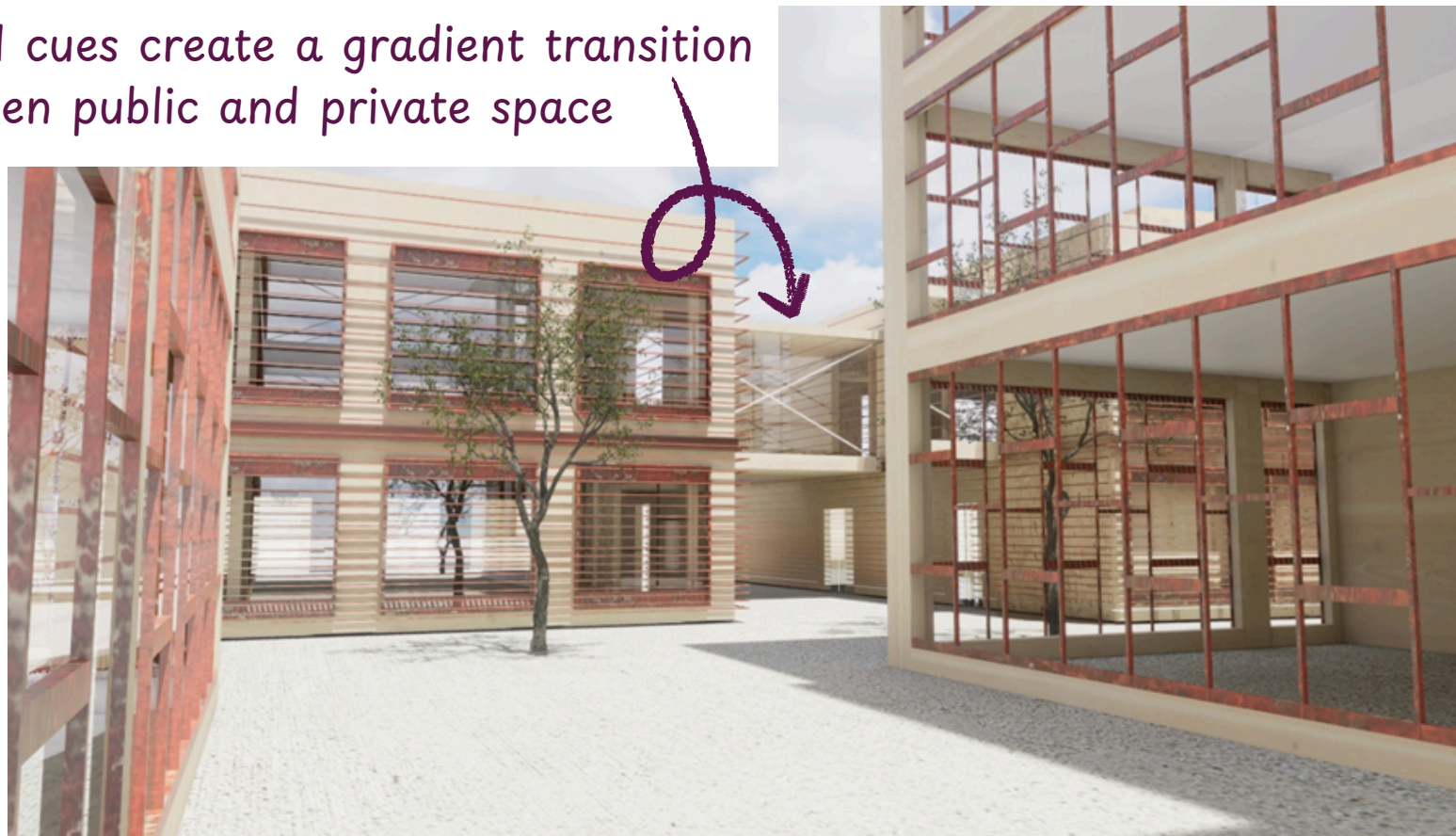
Public plazas anchor the corners while subtly transitioning pedestrians to an elevated plane.



At-grade parking goes unseen



Visual cues create a gradient transition between public and private space



IMAGINE THIS...

Taller buildings and dense development are balanced by healthy setbacks, while a pedestrian alley moves people off the street.



A green walkway full of activity...



Varying heights and roof shapes soften the mass of the building



Before

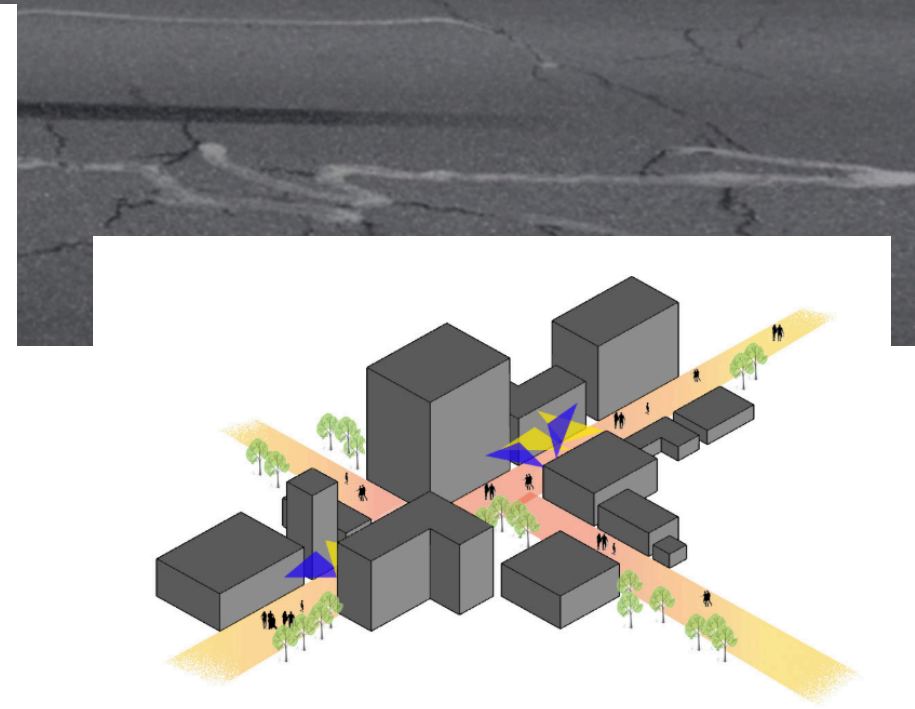
...instead of an auto-oriented alley

IMAGINE THIS...

The space between buildings creates a shopping corridor, beckoning people toward the Commons.

Brightly colored shade sails frame the public realm

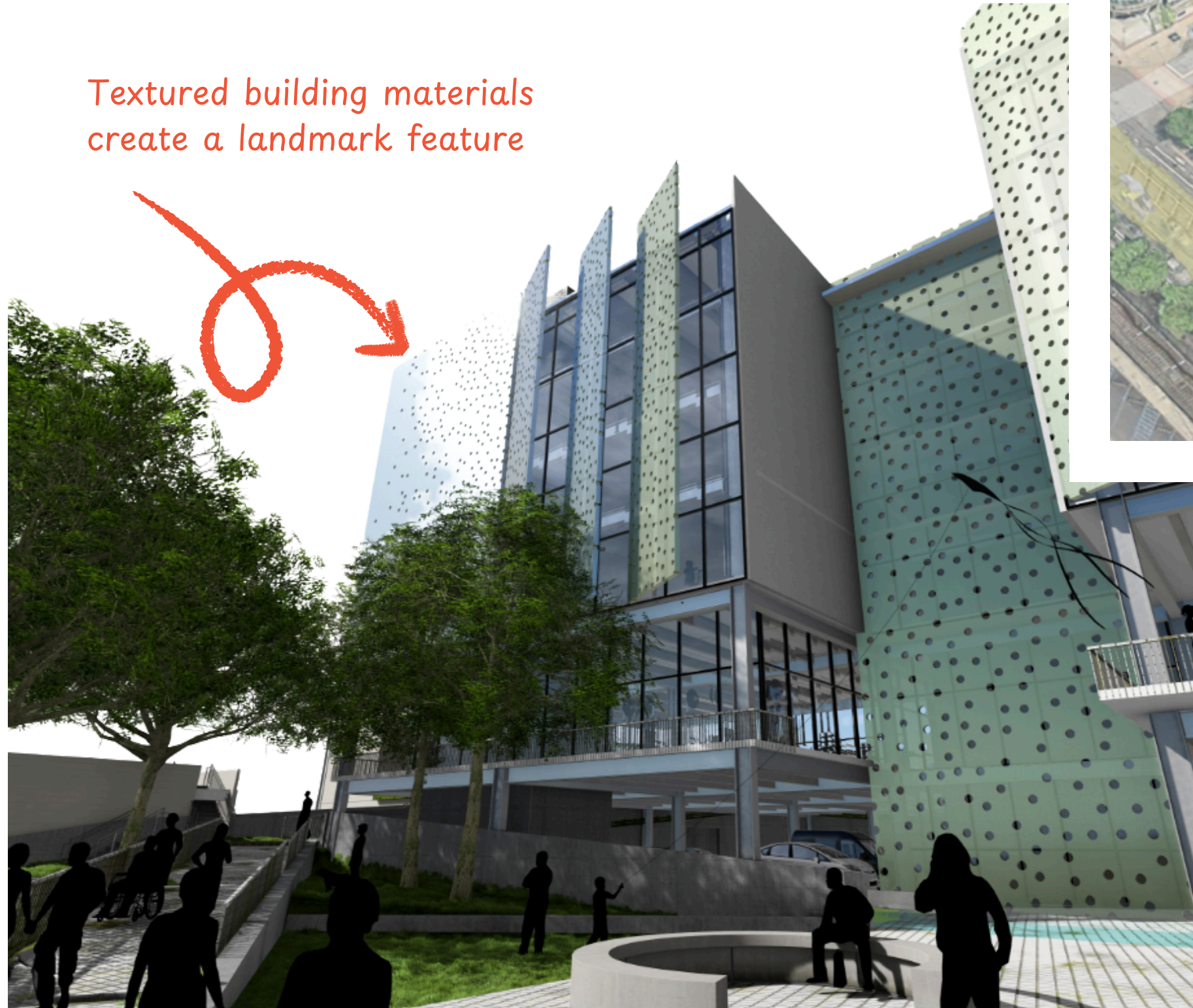
After



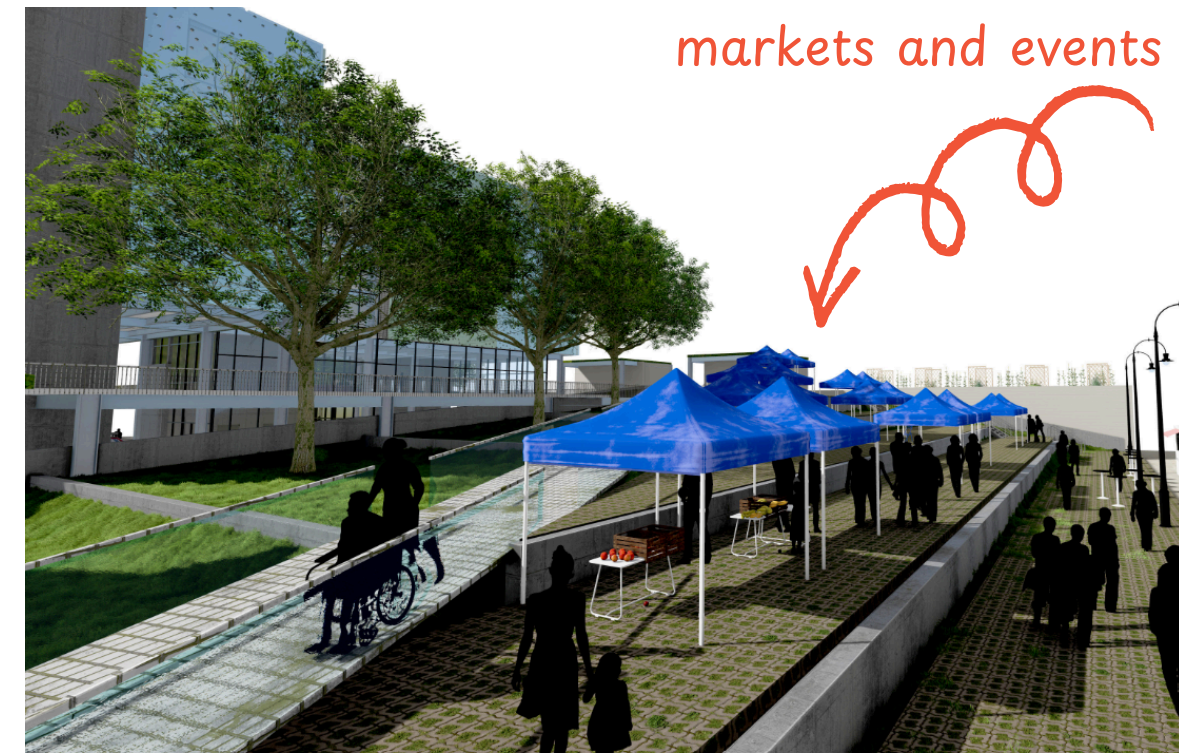
IMAGINE THIS...

Tall buildings are concentrated in a single mass, surrounded by public plazas and green space.

Textured building materials create a landmark feature



Plazas host off-street markets and events

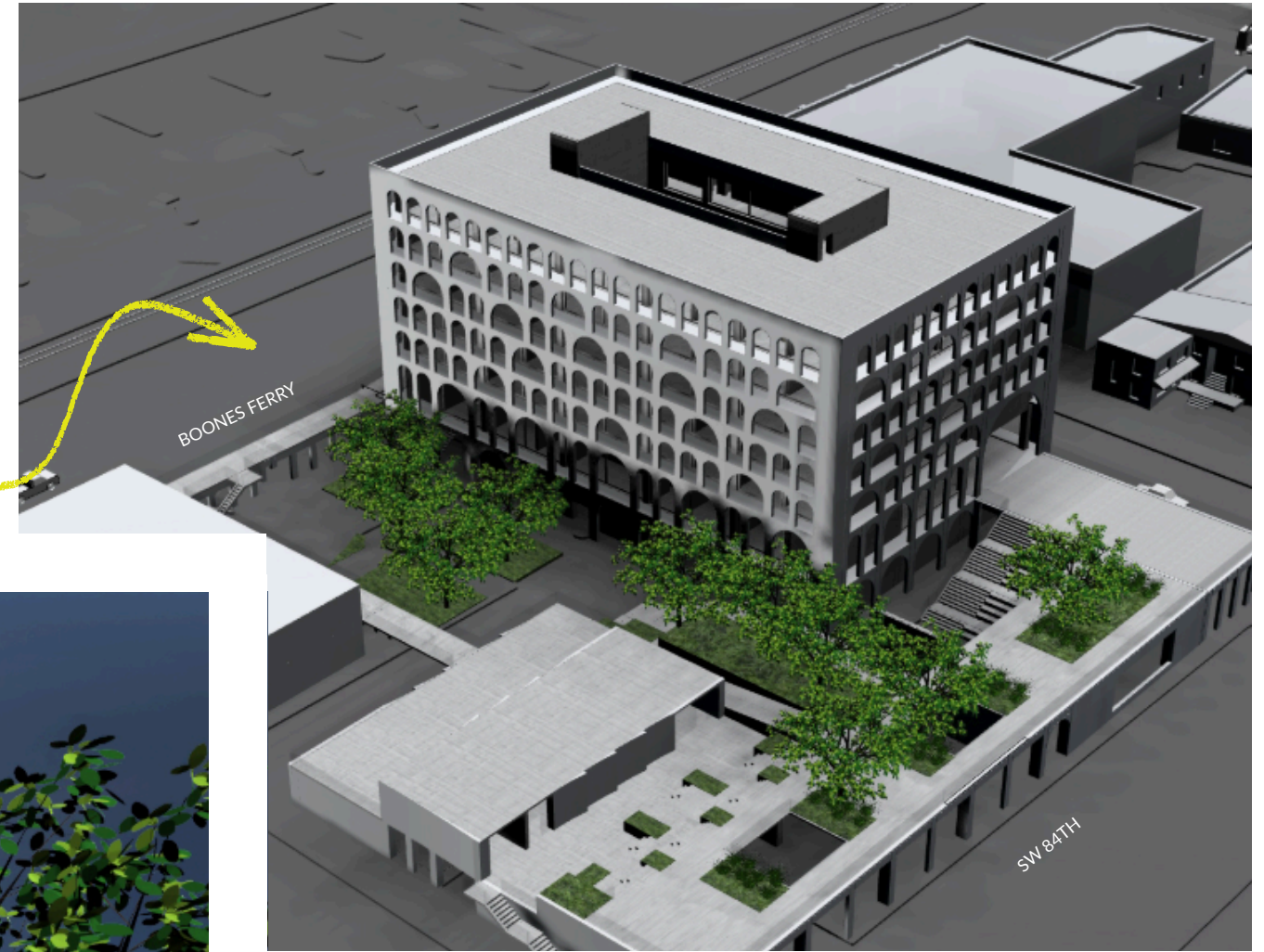


IMAGINE THIS...

A tranquil elevated plane surrounds an at-grade courtyard.

The sunken courtyard is a focal point of the design, a green space surrounded by buildings of various heights

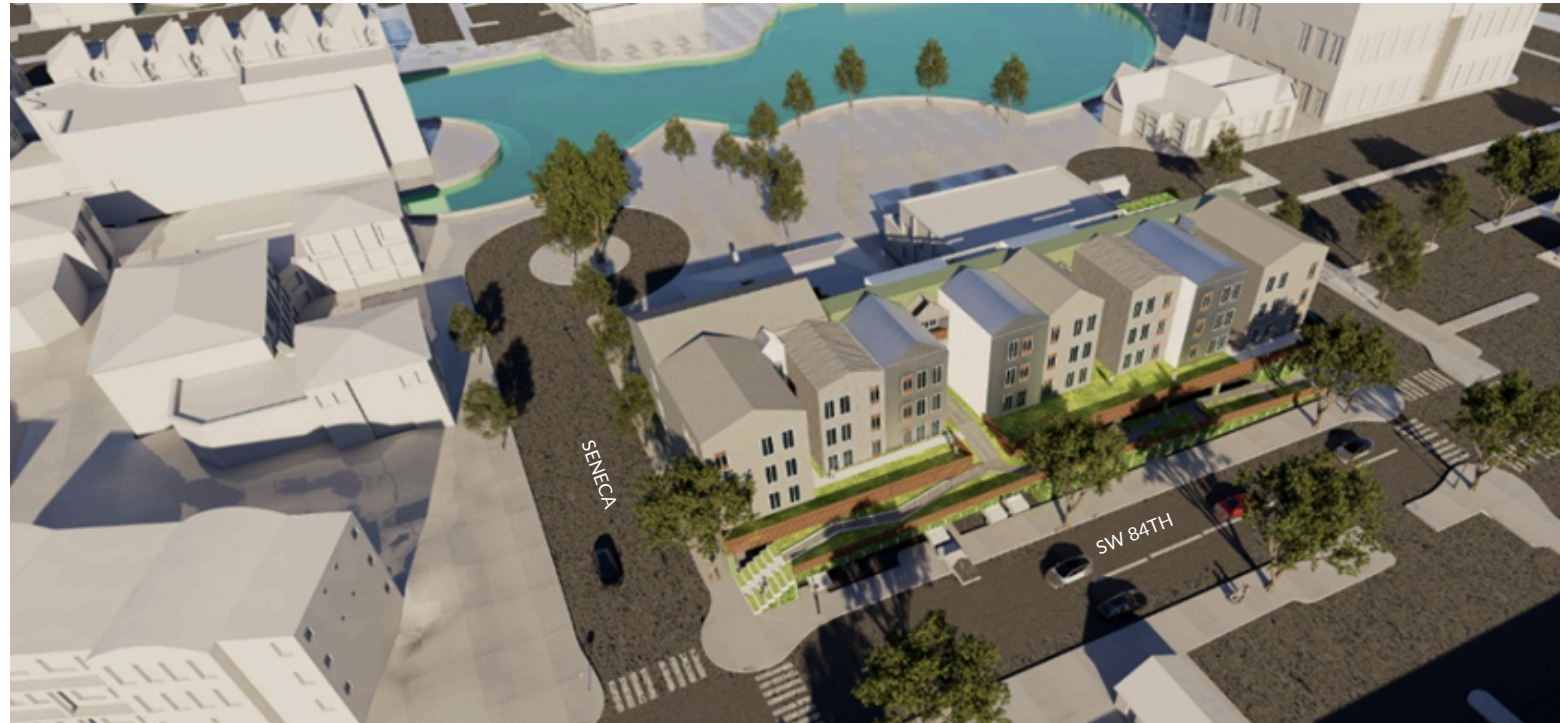
Courtyard walls seamlessly structure the streetscape, making parking structures and spaces between buildings disappear



Varying building heights draw attention to the taller structure, while shorter buildings provide a pedestrian scale more comfortable for people

IMAGINE THIS...

Residential units perch above the yellow parking lot, preserving parking while creating an engaging streetscape.



A sloping green space gently connects the streetscape and residential area



Small shops cap either end of the at-grade parking structure

IMAGINE THIS...

A nursery next to the Wynona Grange pays homage to Tualatin's agrarian roots. Low-profile glass structures support activity along the Lake.

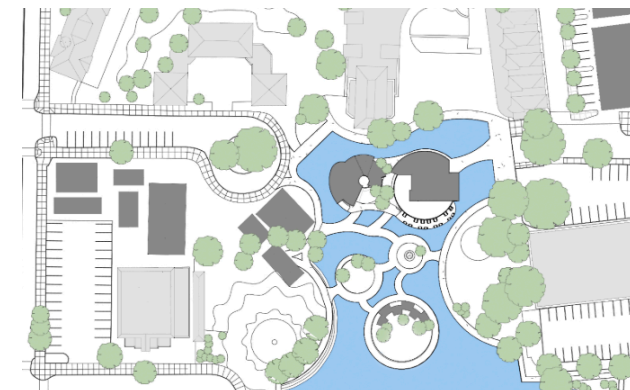


The shape, materiality, and transparency of the greenhouse form could be adapted for other community functions

IMAGINE THIS...

Lily pad-inspired islands create gathering spaces of different sizes, providing a whimsical connection between Veteran's Plaza and the splash pad.

Lily pad islands activate the Lake while leaving room for the Pumpkin Regatta



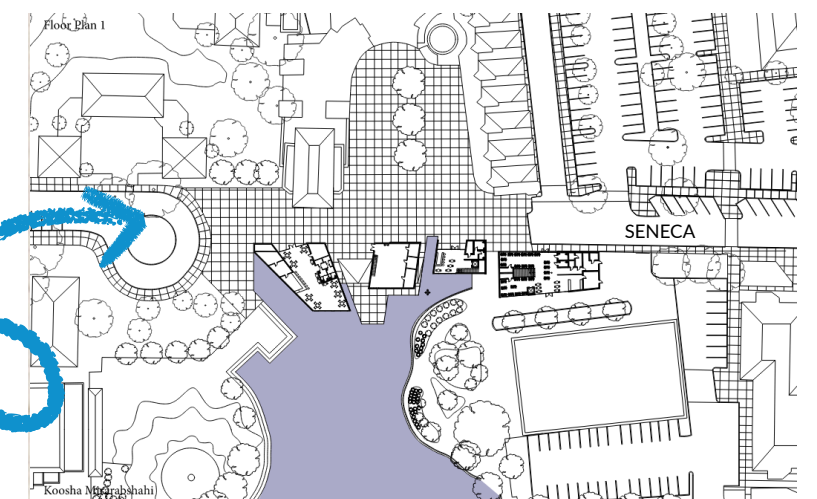
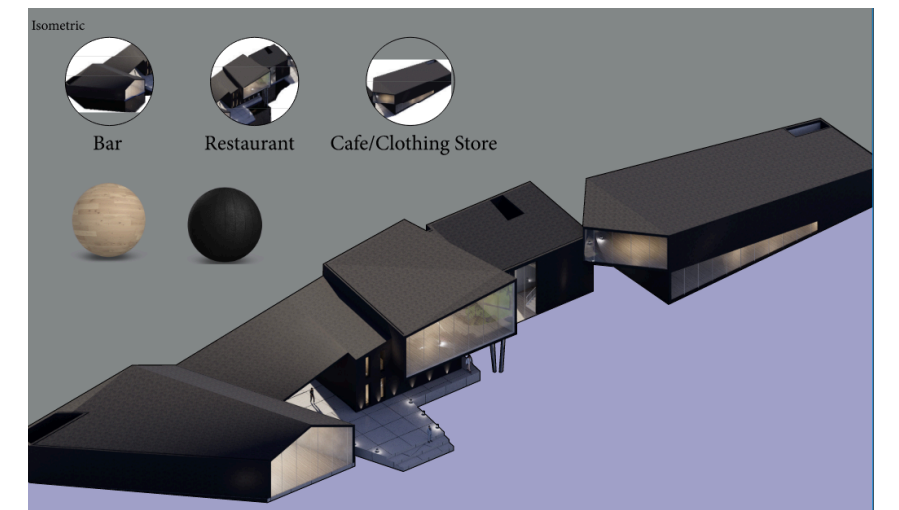
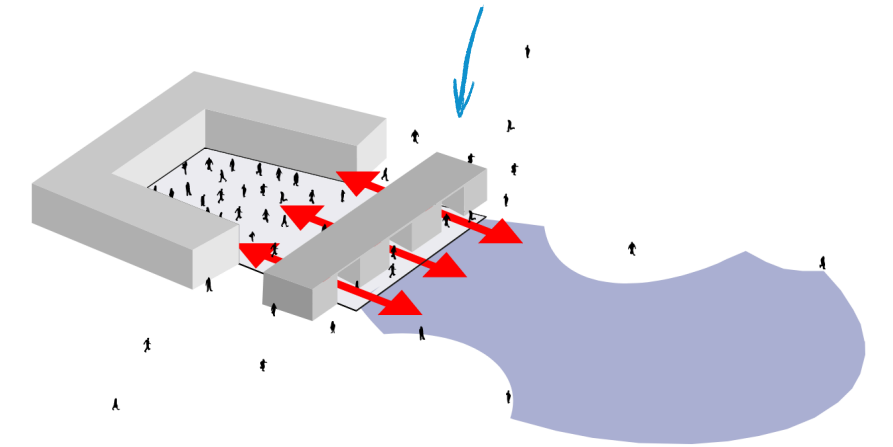
IMAGINE THIS...

Restaurants spill into a plaza, framed by a lakefront structure that maintains key sight lines.



Koosha Mirarabshahi

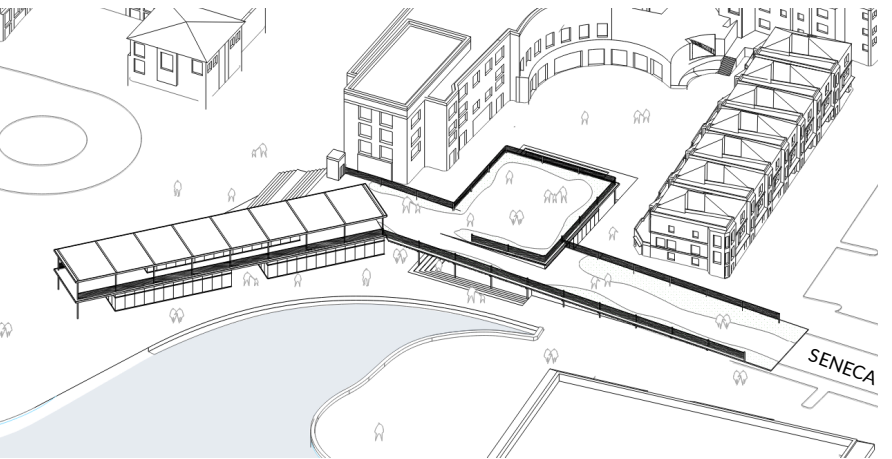
The park plaza introduces new activities and uses to the north end of the Lake while maintaining a visual connection to the water



Pedestrians visit ground floor businesses as they move along Seneca Street

IMAGINE THIS...

A curved addition introduces multilayered activity to the northern edge of the Lake.



A gently elevated pedestrian path provides different view points and sitting areas along the water's edge, while connecting the two ends of Seneca Street



IMAGINE THIS...

A meandering path seamlessly connects the riverfront park and downtown commercial district.



Natural materials invoke visual themes from the riverfront park



IMAGINE THIS...

Ground floor parking is masked by intriguing edges that invite exploration of an elevated district.

Ramps and stairs provide connectivity while elevating uses above the floodplain



Trees extend through the roof of a parking structure



IMAGINE THIS...

A pedestrian path passes through nodes of activity, inviting users to try something new.



Curated public spaces extend themes from the riverfront park and provide opportunities for uses, like food carts, that activate downtown

