

PTA 20-0006 Amendments to Cannabis Regulations

City Council
November 9, 2020



OUR DISCUSSION TODAY

*Amendments to Tualatin Development Code
Chapter 80: Cannabis Facilities*

- Background
- Proposed text amendments
- Planning Commission recommendation



BACKGROUND

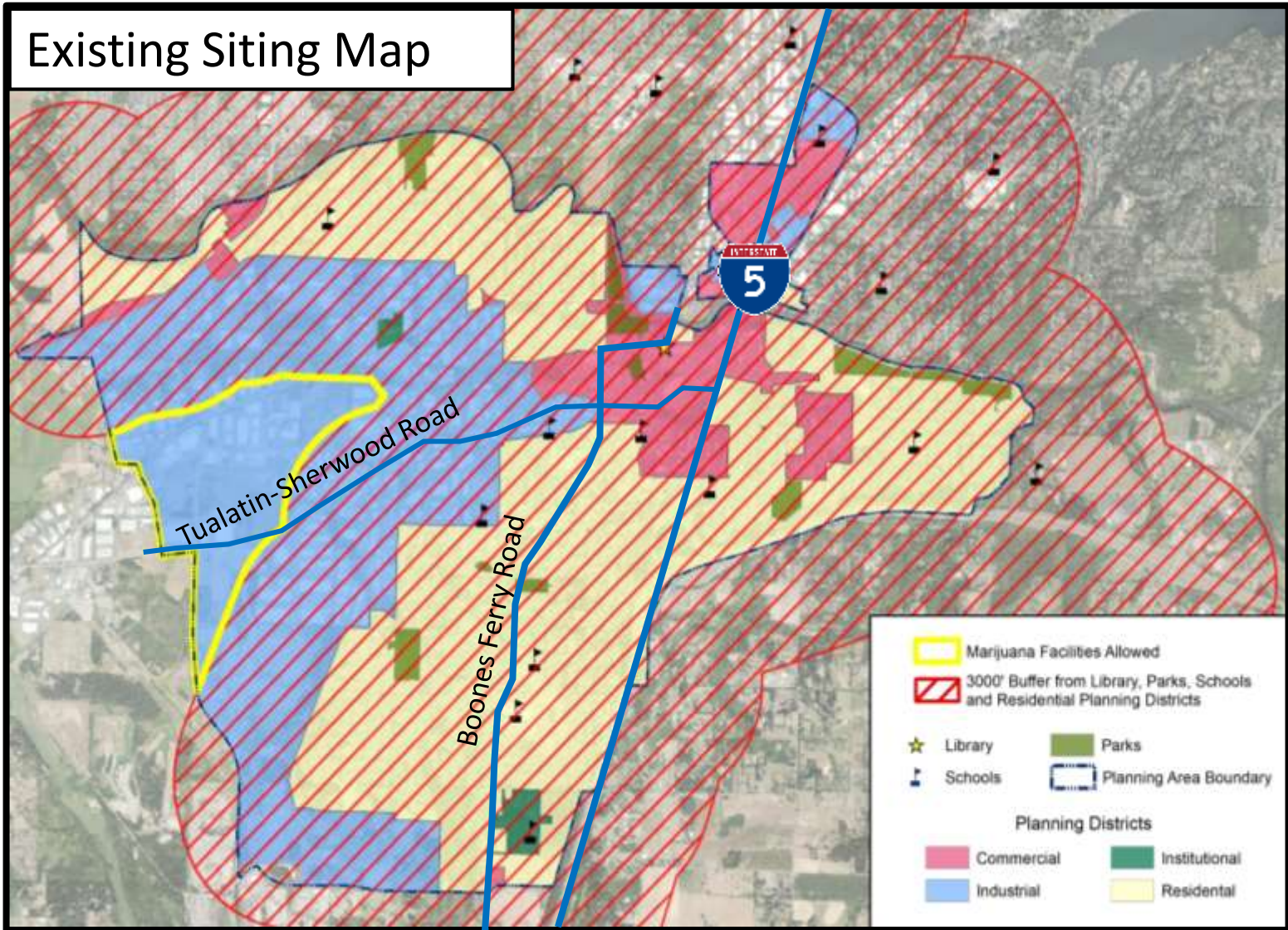
State law allows cities to put regulations on cannabis businesses.

In 2015, Tualatin adopted regulations that:

- Limited cannabis facilities to industrial zoning districts
- Imposed buffer restrictions to other uses



Existing Siting Map



PTA 20-0006 HISTORY

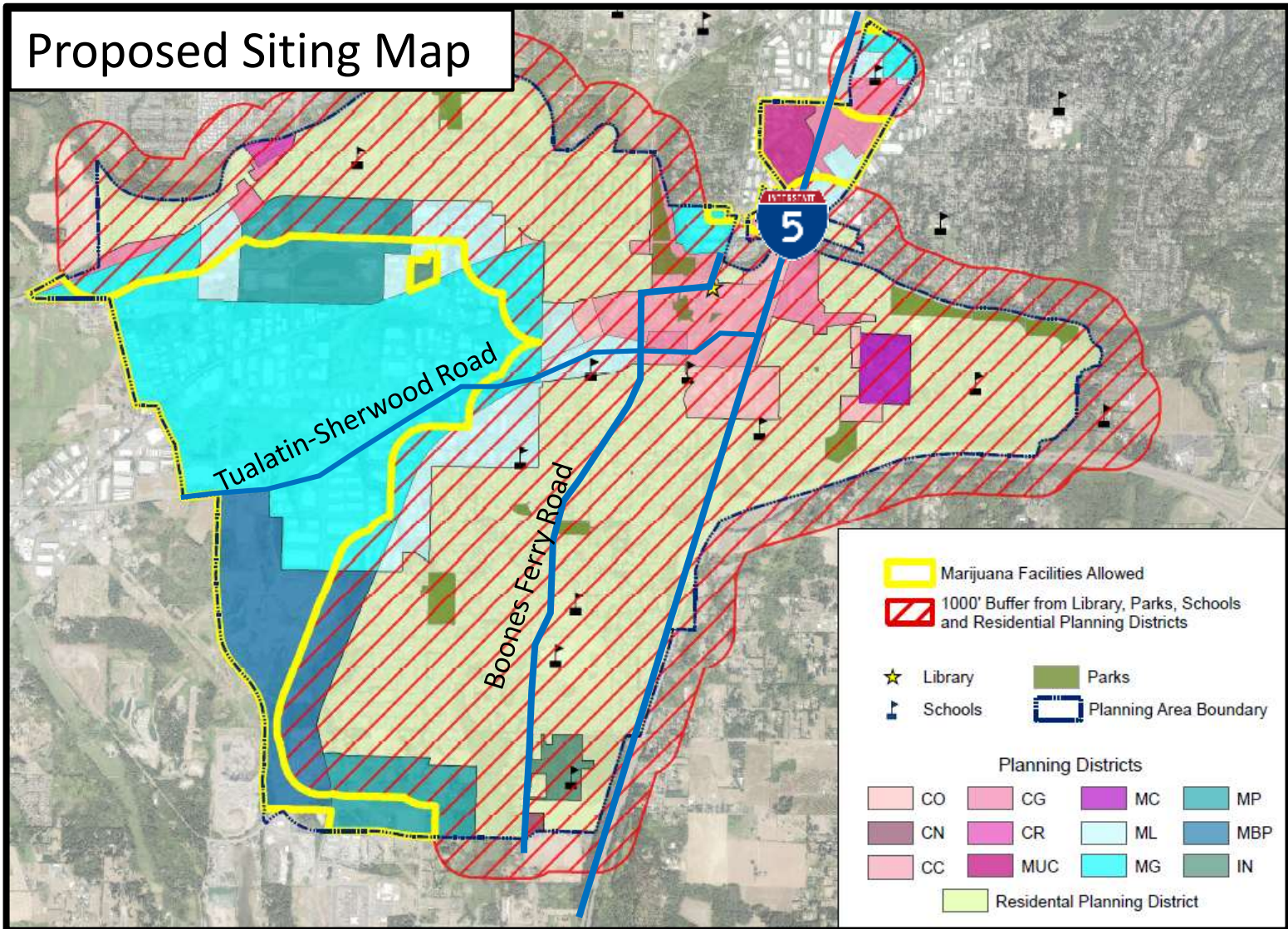
- September 16, 2020: Webinar held to discuss changes to cannabis regulations.
- September 28, 2020: Webinar comments shared with Council. Staff directed to proceed with amendment.
- October 15, 2020: Planning Commission recommends approval of PTA 20-0006 with changes to locational standards.

SUMMARY OF PROPOSED TEXT AMENDMENTS

STANDARD	EXISTING CODE	PTA 20-0006
<i>Reference</i>	<ul style="list-style-type: none"> • Marijuana 	<ul style="list-style-type: none"> • Cannabis
<i>Zones permitted in:</i>	<p><i>All Marijuana Facilities:</i></p> <ul style="list-style-type: none"> • Light Manufacturing • General Manufacturing • Manufacturing Business Park 	<p><i>All Cannabis Facilities:</i></p> <ul style="list-style-type: none"> • Light Manufacturing • General Manufacturing • Manufacturing Business Park <p><i>Retail Sales & Medical Dispensary:</i></p> <ul style="list-style-type: none"> • Office Commercial • Recreation Commercial • General Commercial • Mid Rise/Office Commercial • Medical Center • Mixed Use Commercial
<p><i>Buffer from:</i></p> <ul style="list-style-type: none"> • Residential Zones • City Parks • Schools • Library 	3,000 feet	1,000 feet
<i>Buffer between Cannabis Facilities:</i>	2,000 feet	1,000 feet
<i>Limitations on Facility size</i>	Cannot exceed 3,000 square feet	None



Proposed Siting Map



APPROVAL CRITERIA

The Findings and Analysis discuss how the proposal meets the applicable criteria of:

- Oregon Statewide Planning Goals;
- Oregon Administrative Rules;
- Metro Code;
- Tualatin Comprehensive Plan;
- Tualatin Development Code 33.070(5)



P.C. RECOMMENDATION

The Planning Commission recommends approval of PTA 20-0006 with additional changes to locational standards:

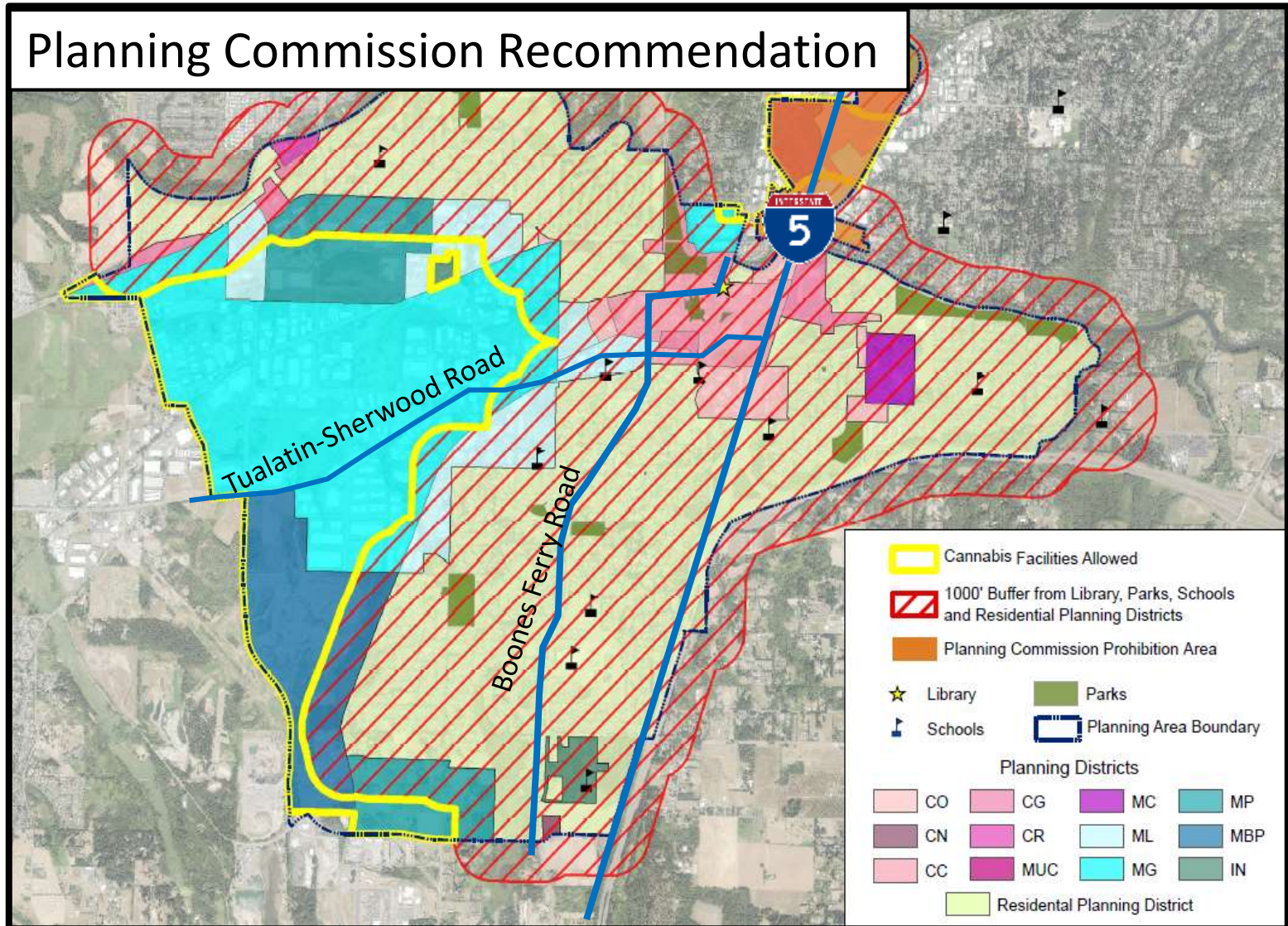
- Recommend prohibition on cannabis businesses in high-visibility areas, such as the I-5 corridor or the Bridgeport area (within 2,000 feet of I-5 or north of Nyberg Road).
- Recommend prohibition on cannabis businesses in Neighborhood Commercial District (CN) due to purpose of being proximate to residential areas.



CITY OF

TUALATIN OREGON

Planning Commission Recommendation



QUESTIONS?

