

A vibrant watercolor illustration of a garden scene. The background is a bright yellow. In the foreground, there are various flowers including purple lavender, yellow daisies, blue cornflowers, and red poppies. Several bees are shown flying around the flowers, and a dragonfly is perched on a stem. A ladybug is also visible on a purple flower. The overall scene is lush and colorful.

POLLINATOR WEEK

JUNE 22-28, 2026

BEE CITY USA

Thinking globally and acting locally, Bee City USA provides a framework for communities to work together to conserve native pollinators by increasing the abundance of native plants, providing nest sites, and reducing the use of pesticides.

Bee City USA affiliates make commitments to conserve native pollinators, laid out in a resolution adopted by the local city council. City staff and community members work together to carry out these commitments and make their city a better place for pollinators.



POLLINATOR EVENTS & ACTIVITIES



1,100

Pollinator plants planted

31,500

Square feet of habitat enhanced

5

Planting events and activities

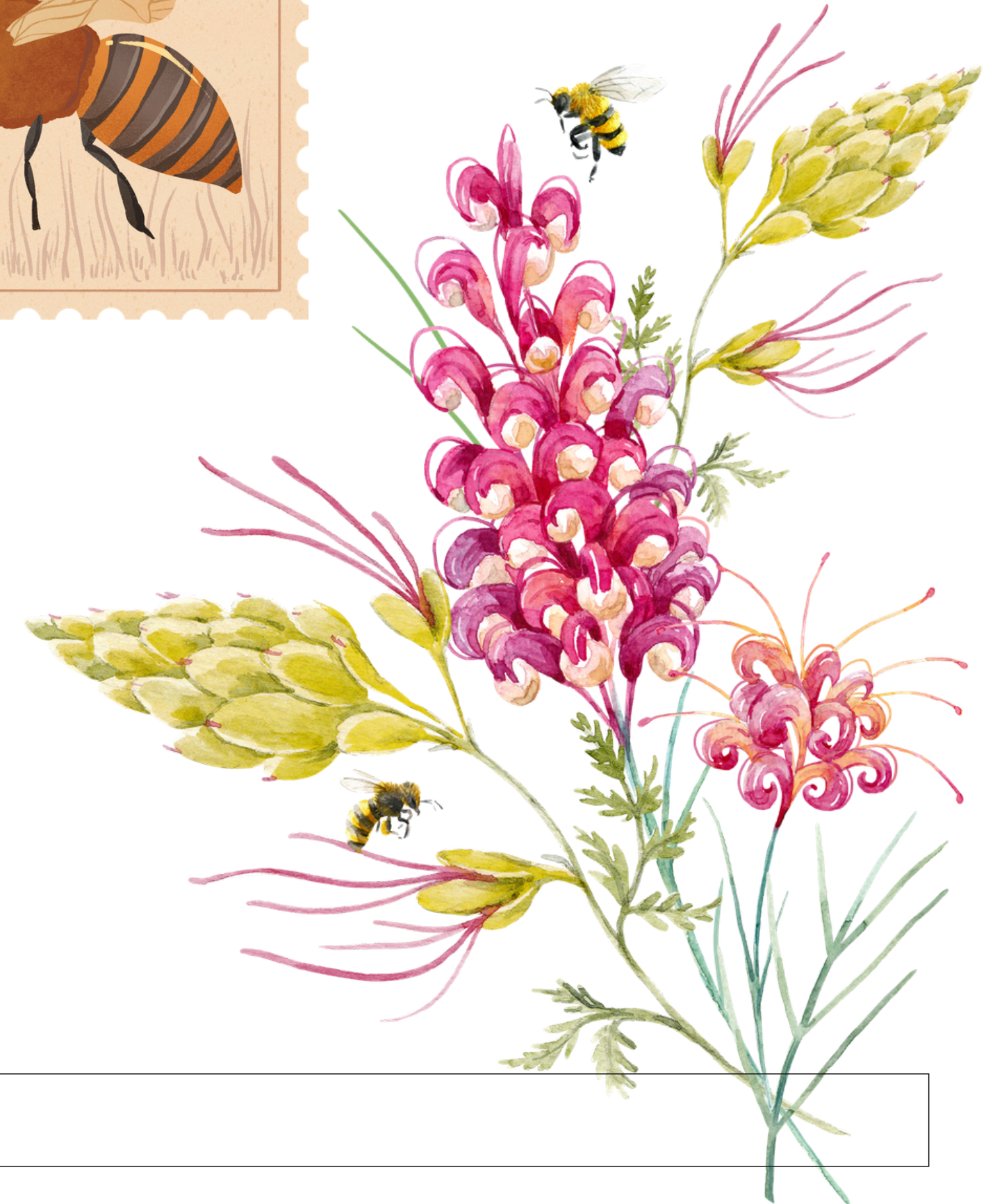
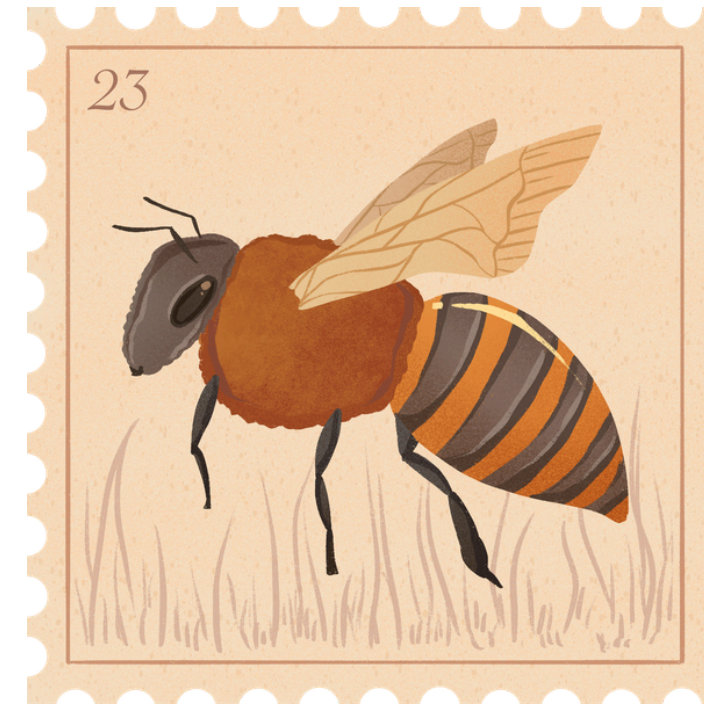
350

Volunteers



COMMUNITY BENEFITS

- ◆ Ensure survival of vital animal species
- ◆ Build community locally and nationally
- ◆ Improve local food production
- ◆ Support small businesses
- ◆ Address pest problems with fewer pesticides
- ◆ Heighten awareness of biological diversity



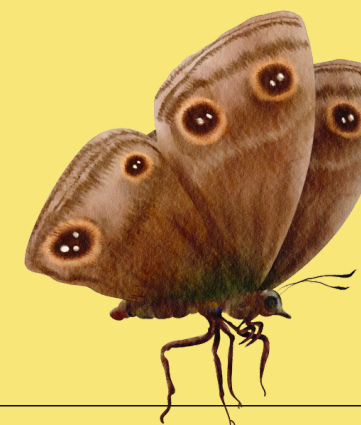
POLLINATION FACTS

WHAT POLLINATION DOES

- Pollination is a vital stage in the life cycle of all flowering plants.
- Pollinators are critical to the native species ecosystem.
- An estimated 1/3 of all foods and beverages is delivered by pollinators.
- In the U.S., pollination produces nearly \$20 billion worth of products annually.

HOW YOU CAN HELP

- Help pollinators by planting pollinator friendly gardens.
- Reduce use of pesticides to support pollinators.



GET INVOLVED



- ◆ **Audubon Backyard Habitat Certification Program**
<https://audubonportland.org/get-involved/backyard-habitat-certification-program>
- ◆ **Friends of Trees**
<https://friendsoftrees.org/>
- ◆ **Byrom School Pollinator Garden**
<https://www.facebook.com/byromgarden>
- ◆ **Nationwide Parks for Pollinators**
<https://www.nrpa.org/our-work/Three-Pillars/conservation/parks4pollinators/>
- ◆ **Bee City USA City of Tualatin**
<https://www.tualatinoregon.gov/recreation/bee-city-usa-city-tualatin>

QUESTIONS & COMMENTS

