

**TOWN OF TRUCKEE  
California**

**RESOLUTION 2022-55**

**A RESOLUTION OF THE TOWN COUNCIL OF THE TOWN OF TRUCKEE  
INITIATING PROCEEDINGS FOR THE FORMATION OF A LANDSCAPING  
AND LIGHTING ASSESSMENT DISTRICT TO BE KNOWN AS THE  
WEST RIVER LANDSCAPING AND LIGHTING ASSESSMENT DISTRICT NO. 1**

**WHEREAS**, the Town Council has directed that a maintenance assessment district be formed as part of the streetscape improvements on West River Street, Bridge Street and Mill Street, hereinafter the "Project," to provide routine maintenance of the existing and proposed sidewalks, landscaping, and lighting;

**WHEREAS**, the Town Council has determined that all owners of real property within the territory herein described will be specifically benefited by the maintenance and servicing of said improvements; and

**WHEREAS**, Section 22585 of the Landscaping and Lighting Act of 1972, provides that the formation of a landscaping and lighting assessment district shall be initiated by resolution;

\*\*\*\*\*

**NOW THEREFORE BE IT RESOLVED** by the Town Council of the Town of Truckee, State of California, as follows:

1. The Town does hereby declare its intent to form an assessment district pursuant to the Landscaping and Lighting Act of 1972 (Section 22500 and following, Streets and Highways Code) for the purpose of the following:
  - a) The maintenance of sidewalk improvements, including snow removal, snow off-hauling and sweeping as described in the Engineer's Report, which is on file with the Town of Truckee Town Clerk; and
  - b) The maintenance or servicing, or both, including repairing or replacing damaged areas or infrastructure such as bike racks, benches, pavers, or driveway aprons, as needed. Maintenance also includes trash pick-up, garbage can and parking kiosk snow removal, the cost of providing electricity to streetlights, and repair and maintenance of street lighting.
  - c) Annual landscaping services, include weeding, water service, irrigation maintenance and repair, plant replacement, and all other necessary maintenance to ensure fully functional landscaping along the corridor.
  - d) Annual easement or license fees for each utility.
  - e) Administrative and reserve fees.
2. The proposed assessment district shall be designated West River Landscaping and Lighting Assessment District No. 1 and shall include the lands shown on the map attached hereto as Exhibit A.
3. Kristin Lowell, Inc is hereby designated engineer for the purpose of these formation proceedings. The District hereby directs the engineer to prepare and file with the Town a

report in accordance with Article 4 of Chapter 1 of the Landscaping and Lighting Act of 1972.

The foregoing resolution was introduced by \_\_\_\_\_, seconded by \_\_\_\_\_, at a regular meeting of the Truckee Town Council, held on the 13th day of September, 2022 and adopted by the following vote:

**AYES:**

**NOES:**

**ABSENT:**

**ATTEST:**

\_\_\_\_\_  
Courtney Henderson, Mayor

\_\_\_\_\_  
Judy Price, MMC, Town Clerk

OFFICIAL MAP OF  
WEST RIVER STREET LANDSCAPE AND LIGHTING ASSESSMENT  
DISTRICT NO. 1  
TOWN OF TRUCKEE, COUNTY OF NEVADA, STATE OF CALIFORNIA  
SHEET 1 OF 2

1. FILED IN THE OFFICE OF THE TOWN CLERK THIS \_\_\_\_ DAY OF \_\_\_\_\_ 2022.

TOWN CLERK  
TOWN OF TRUCKEE

2. I HEREBY CERTIFY THAT THE WITHIN MAP SHOWING BOUNDARIES OF TOWN OF TRUCKEE W. RIVER STREET LANDSCAPE AND LIGHTING ASSESSMENT DISTRICT NO. 2022-1, COUNTY OF NEVADA, STATE OF CALIFORNIA, WAS APPROVED BY THE TOWN COUNCIL, AT A MEETING THEREOF HELD ON THE \_\_\_\_ DAY OF \_\_\_\_\_, 2022.

TOWN CLERK  
TOWN OF TRUCKEE

3. FILED THIS \_\_\_\_ DAY OF \_\_\_\_\_ 2022 AT THE HOUR OF \_\_\_\_\_ O' CLOCK, \_\_\_\_ M, IN BOOK \_\_\_\_ OF  
MAPS OF ASSESSMENT AND COMMUNITY FACILITIES DISTRICTS AT PAGE \_\_\_\_\_ IN THE OFFICE OF THE  
COUNTY RECORDER, IN THE COUNTY OF NEVADA, STATE OF CALIFORNIA.

GREGORY J. DIAZ, COUNTY RECORDER

COUNTY OF NEVADA

INSTRUMENT NUMBER: \_\_\_\_\_

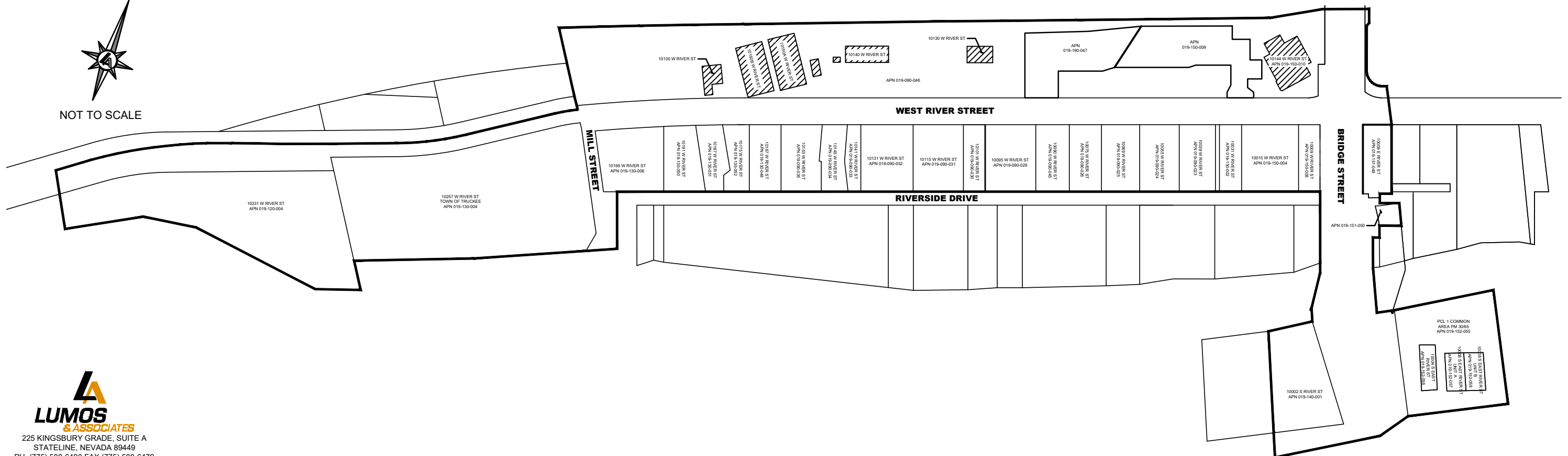
LEGEND



## W. RIVER STREET LANDSCAPE AND LIGHTING ASSESSMENT DISTRICT



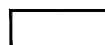
NOT TO SCALE



225 KINGSBURY GRADE, SUITE A  
STATELINE, NEVADA 89449  
PH. (775) 588-6490 FAX (775) 588-6479

OFFICIAL MAP OF  
WEST RIVER STREET LANDSCAPE AND LIGHTING ASSESSMENT  
DISTRICT NO. 1  
TOWN OF TRUCKEE, COUNTY OF NEVADA, STATE OF CALIFORNIA  
SHEET 2 OF 2

LEGEND



## W. RIVER STREET LANDSCAPE AND LIGHTING ASSESSMENT DISTRICT

019-090-046

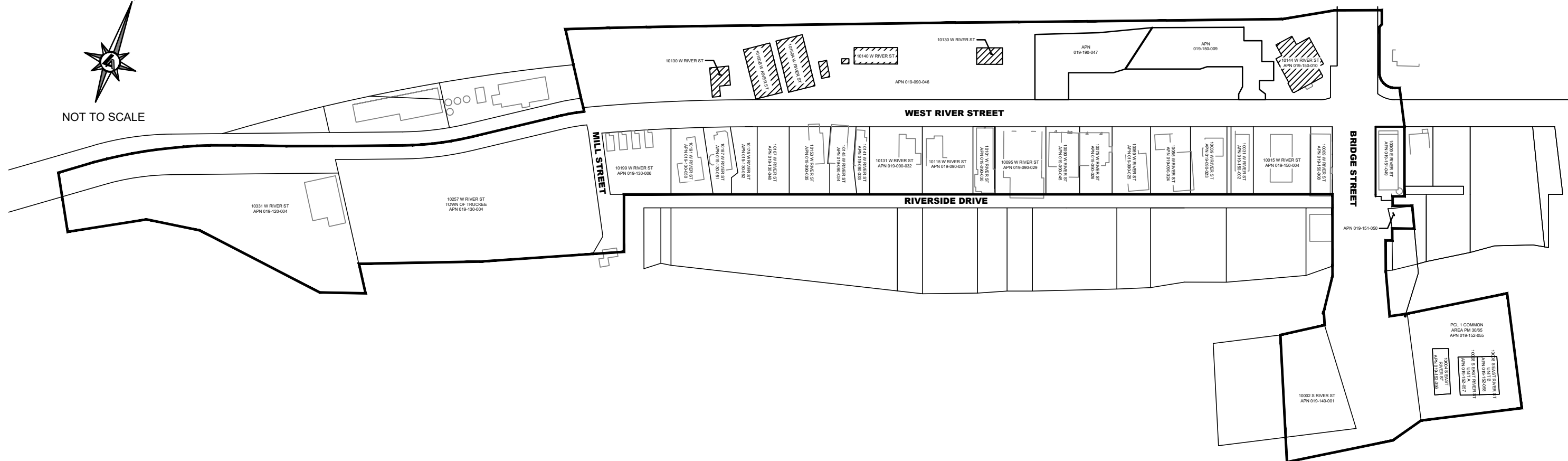
ASSESSORS PARCEL NUMBER



BUILDINGS LOCATED ON RAILROAD PARCEL



NOT TO SCALE



225 KINGSBURY GRADE, SUITE A  
STATELINE, NEVADA 89449  
PH. (775) 588-6490 FAX (775) 588-6479