

***“From Rails to Trails”***

*October 1, 2024 Submittal*

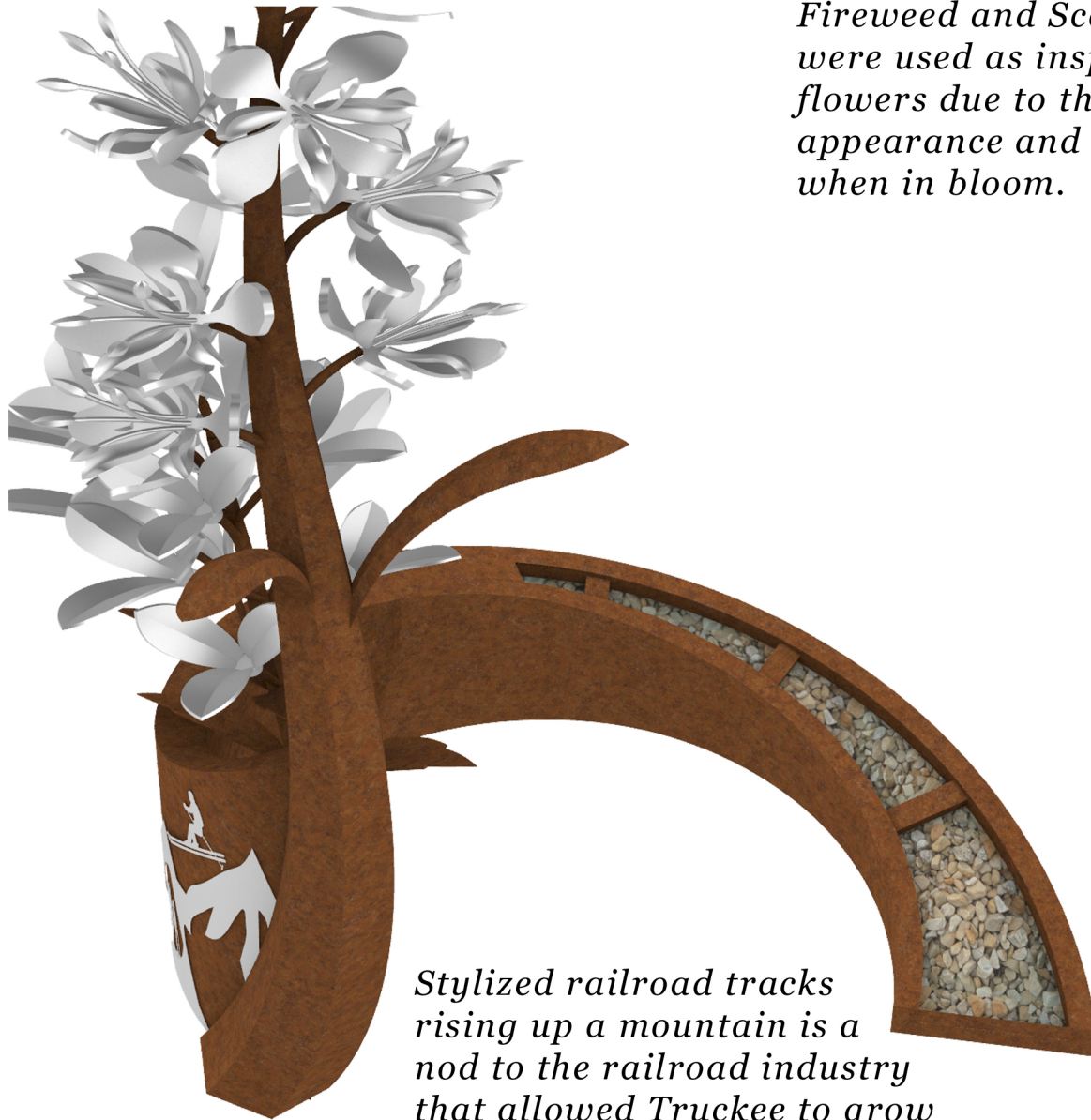


***“From Rails to Trails”***



## ***“From Rails to Trails”***

*Fireweed and Scarlet Paintbrush were used as inspiration for the flowers due to their unique appearance and stunning colors when in bloom.*



*Stylized railroad tracks rising up a mountain is a nod to the railroad industry that allowed Truckee to grow*



## “From Rails to Trails”

**Size:** 18' T x 14' W x 11'D

**Weight:** Total weight is between 2500 and 3200 lbs depending on what the engineer specifies for the structural material. Two thirds of that weight is in the bottom 7 feet of the sculpture.

**Materials:** 316 stainless steel with a satin finish, Corten steel, and river rock.

**Fabrication:** The flowers are created with hollowforms giving them a very realistic look as well as making them very strong and durable. The satin finish subtly reflects light and color without a lot of harsh glare. Unique grinding patterns is will be used to accent the shapes of the petals similar to the image to the right.



*Example of the finish on the flowers*



**Maintenance:** Virtually none. The stainless steel Corten steel will withstand the midwest weather and any graffiti can be removed by chemical or mechanical means.

**Installation:** The sculptural spiral base is installed first and secured to the footing with masonry anchors. Then the two flower stems are installed and secured to both the footing and the spiral. The flower petals are then installed by inserting the stems into sockets and securing with security screws. I will be on site for the install and can install the flower blooms.

**Footing:** A thick slab is probably the easiest. A fairly simple hemi-sphere shape will probably be the most economical regarding materials. The footing could be level with the grade or rise above grade if more height/visibility is desired.

**Safety:** Although the flower blooms and petals will be structurally strong enough to support a person, the blooms will be arranged in a tight cluster. This “congestion” of elements will make it extremely difficult to climb.

## ***“From Rails to Trails”***

### ***Timeline Trail***

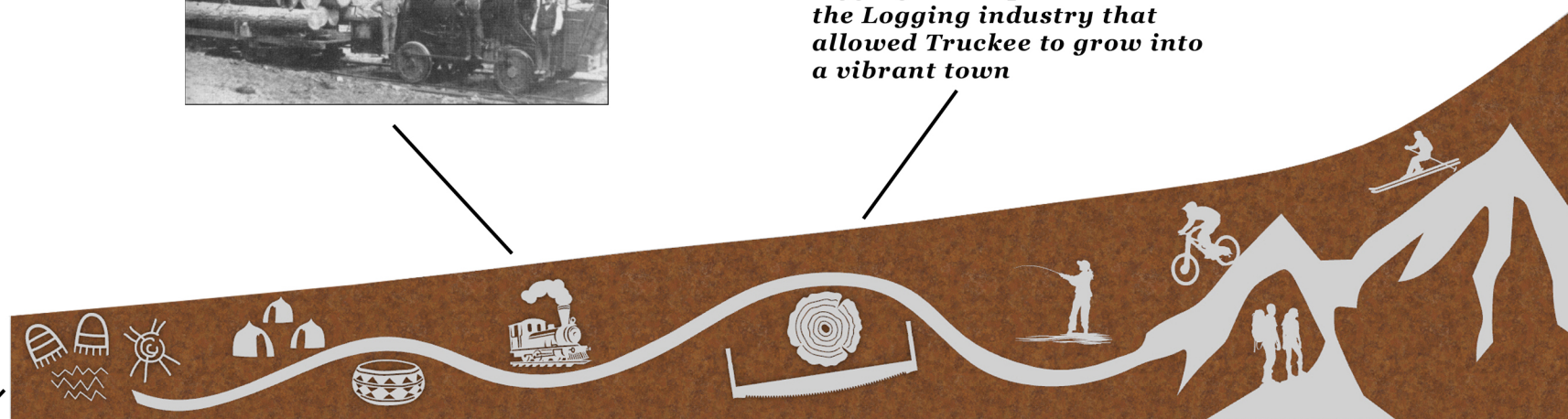
***Small steam locomotive  
represents the introduction  
of the railroad to the Truckee  
area***



***Simple illustration of a  
log and a historical  
logging saw represents  
the Logging industry that  
allowed Truckee to grow into  
a vibrant town***



***2000-4000 year  
old Petroglyphs  
start the time line.***



***Unique thatched living structures  
and a design of one of their famous  
baskets represents the Washoe Tribe  
That populated the area.***



***Simple illustrations of modern  
outdoor activities represent the  
modern attractions to Truckee***

## ***“From Rails to Trails”***

### ***Structure***

*Spiral rails, flower stems, and leaves are fabricated out of Corten steel.*

*Structural steel tubing supports the entire length of the flower stems. These structural members are welded to the 3/4” thick baseplates which includes structural gussets. This frame work attaches to the lattice of the spiral for a very rigid sculpture.*

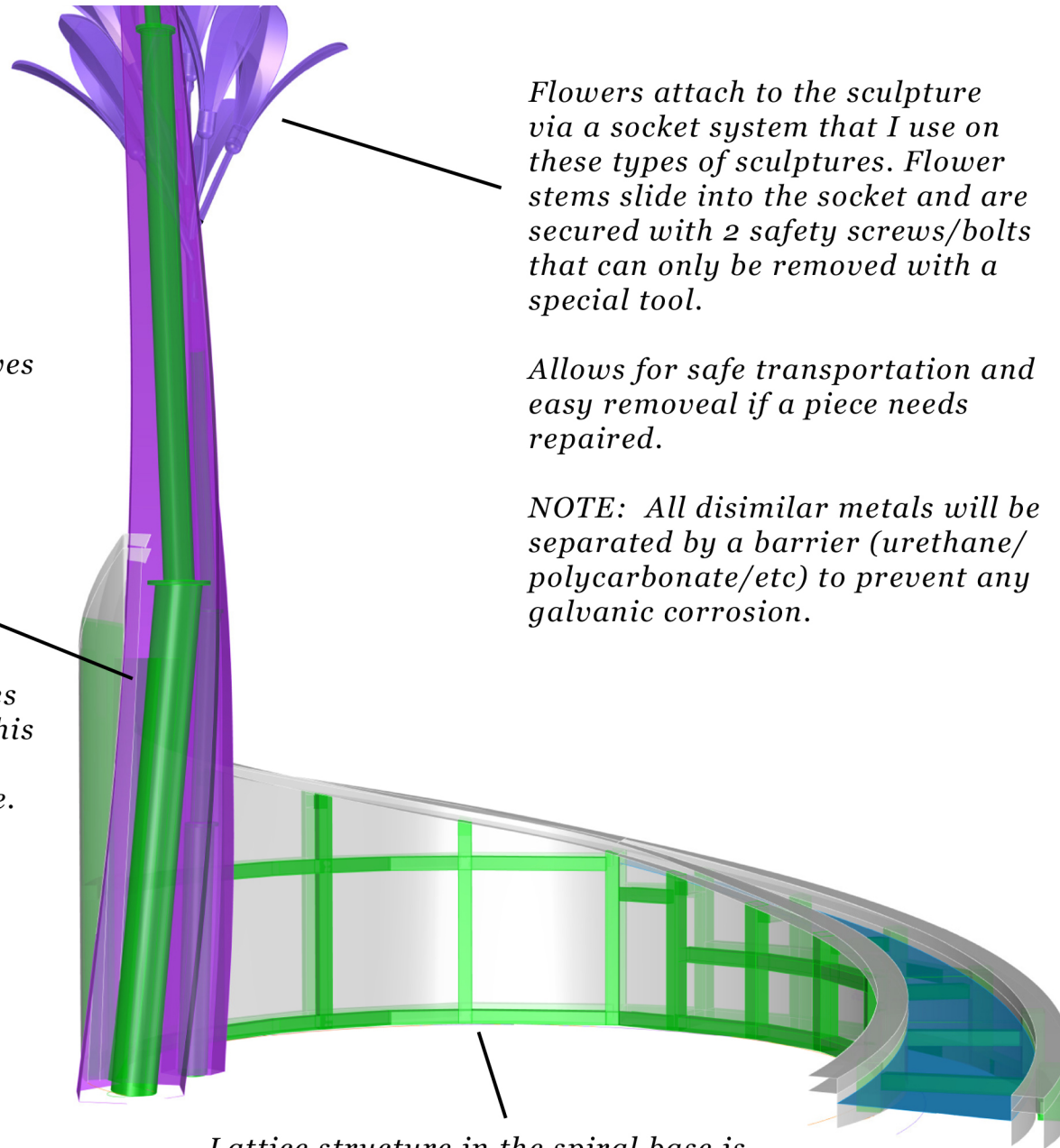
*All structural joints are fully welded.*

*The entire sculpture will have drainage and weep holes to prevent water or ice build up.*

*Flowers attach to the sculpture via a socket system that I use on these types of sculptures. Flower stems slide into the socket and are secured with 2 safety screws/bolts that can only be removed with a special tool.*

*Allows for safe transportation and easy removal if a piece needs repaired.*

*NOTE: All dissimilar metals will be separated by a barrier (urethane/polycarbonate/etc) to prevent any galvanic corrosion.*



*Lattice structure in the spiral base is fabricated using structural steel tubing. This framework secures the spiral portion to the footing using masonry anchors as well as structurally supporting the flower stems.*

## ***“From Rails to Trails”***

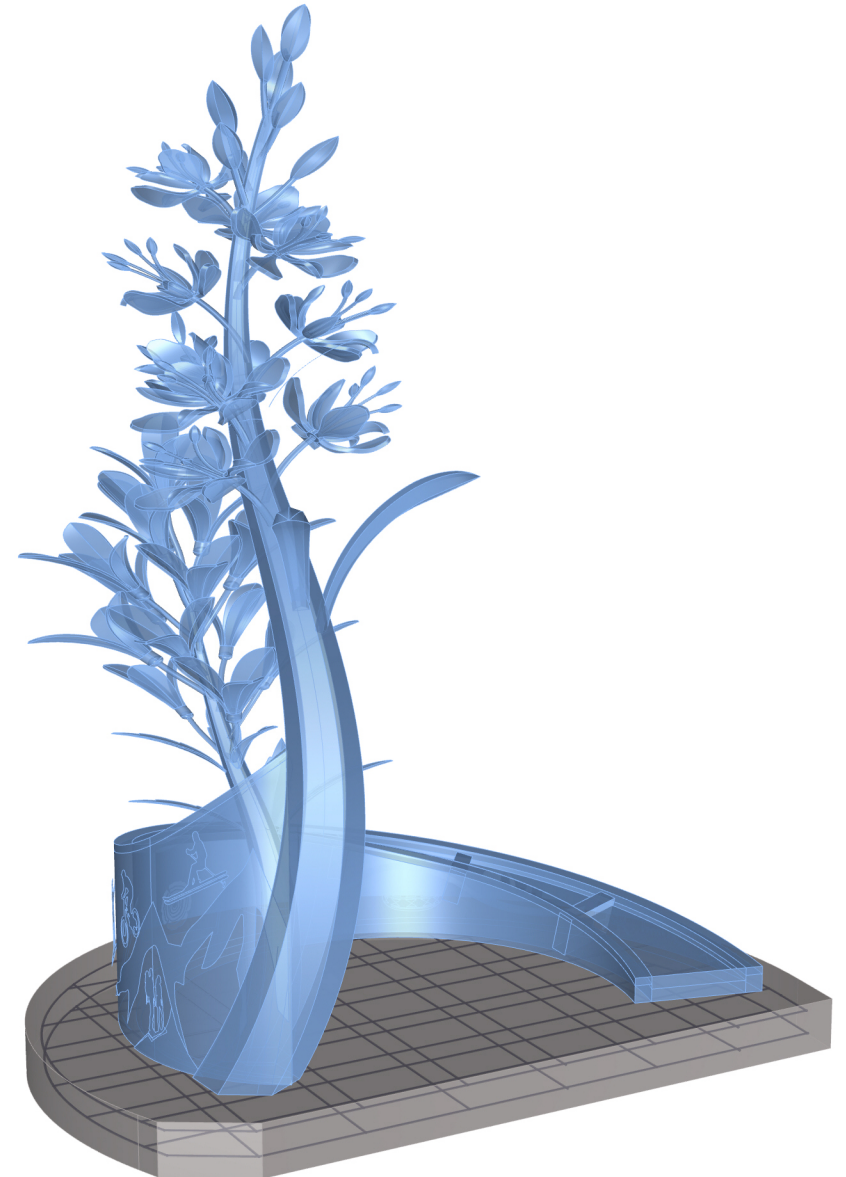
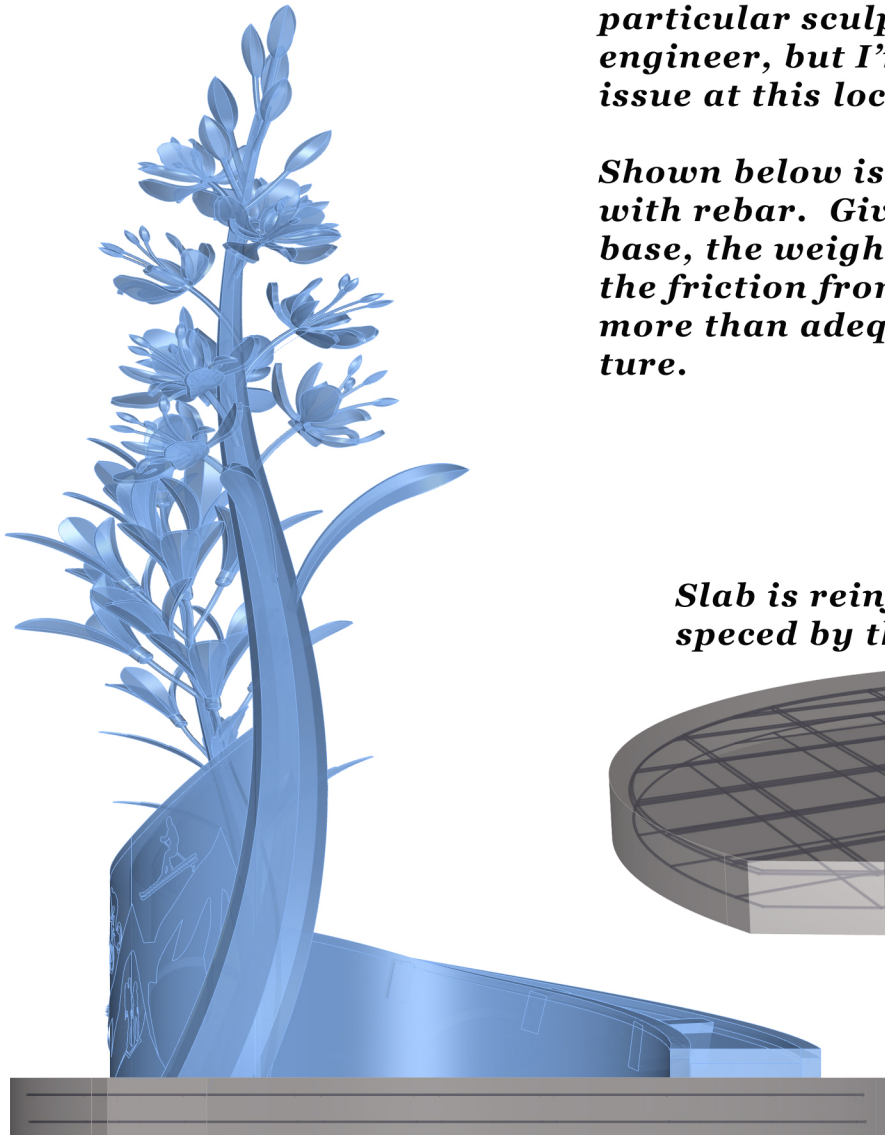
### ***Footing Options:***

***I think we will be able to use a thick slab for this particular sculpture. I’ll need to confirm with an engineer, but I’m not sure heaving will be an issue at this location.***

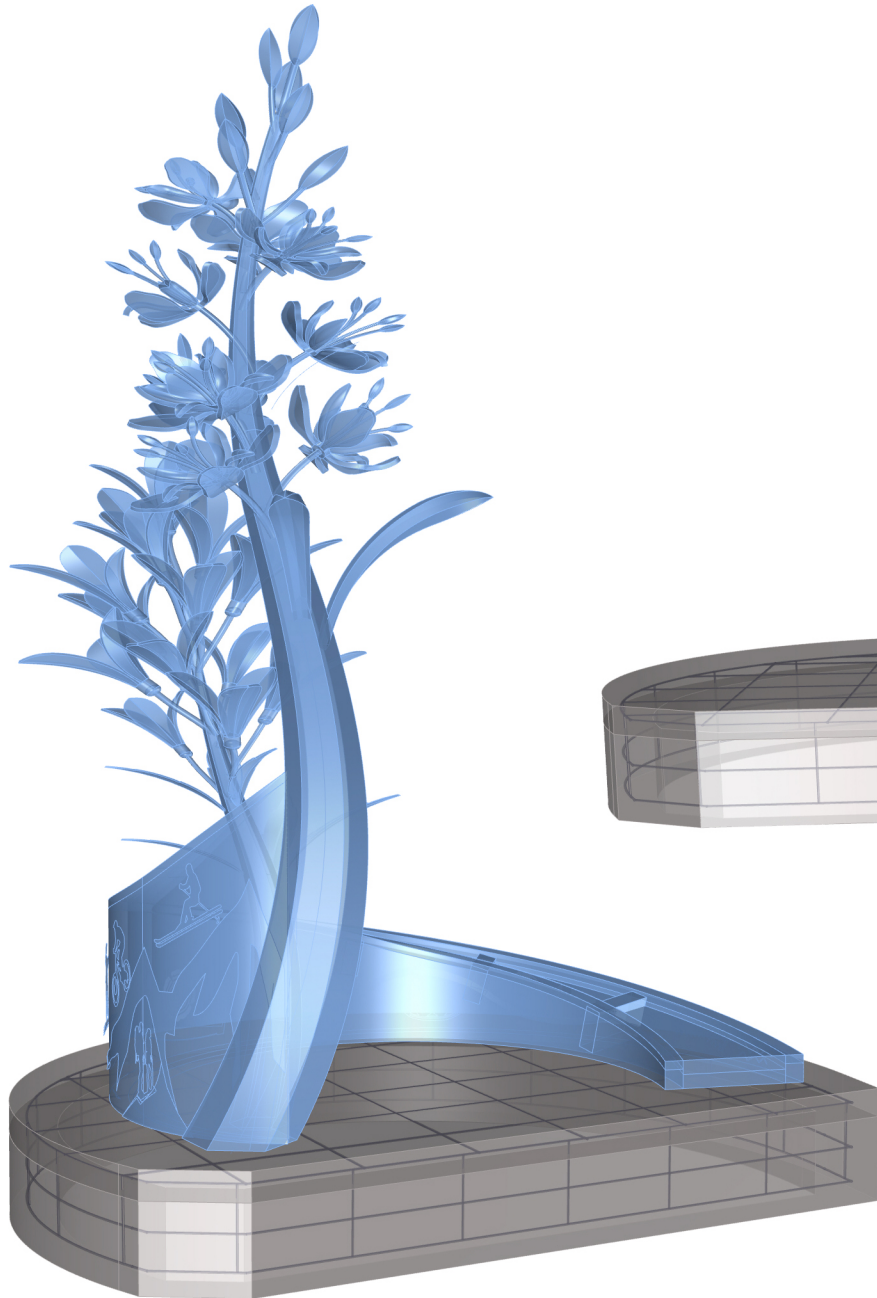
***Shown below is a simple slab 12” thick reinforced with rebar. Given the spread of the sculpture base, the weight of the concrete (17,000 lbs), and the friction from the earth, I believe this will be more than adequate to safely secure the sculpture.***

***Slab is reinforced with rebar as speced by the engineer.***

***Slab is roughly 12” thick***



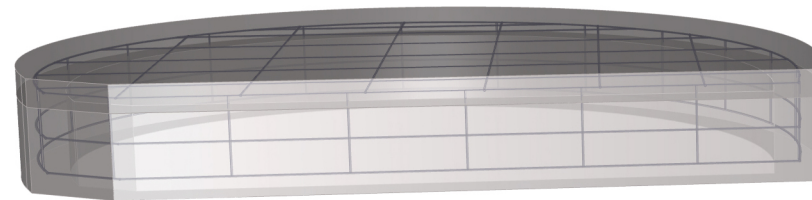
## ***“From Rails to Trails”***



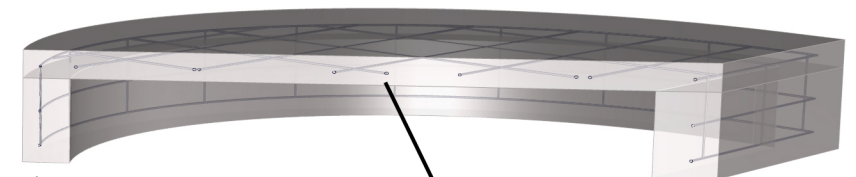
### ***Footing Options #2:***

***If the engineer is concerned with heaving, a simple slab with a 24” deep trench footing will work. This is similar to footings on ranch style houses or garages.***

***Cut away view showing the design of the footing.***



***Footings are roughly 10” wide and 24” deep (below grade) and reinforced with rebar***



***Slab is roughly 6” thick reinforced with rebar***

***“From Rails to Trails”***



***Views of the sculpture as you progress around the roundabout.***

***“From Rails to Trails”***

***Alternate Views***



## "From Rails to Trails" Budget

		Artist Fee		\$12,000.00		
		Engineering		\$5,000.00		
		Metal Materials				
		Structural Steel and base plates		\$3,800.00		
		Corten Steel Sheet Metal		\$4,200.00		
		316 Stainless Steel		\$3,300.00		
		Electrical and Lighting		n/a		
		Other Materials				
		decorative stone		\$500.00		
		Laser Cutting		\$2,400.00		
		Other Subcontractors		n/a		
		Supplies				
		Includes welding wire, sheilding gas, grinding discs, bolts and hardware, finishing media, etc.		\$1,500.00		
		Fabrication				
		575 hours at \$60/hr		\$34,000.00		
		Surface Finishing				
		80 hours at \$60/hr		\$4,800.00		
		Paint		n/a		
		Crating/loading		\$2,000.00		
		Shipping		\$6,000.00		
		Installation				
		hotel,per diem, installing blooms		\$2,000.00		
		Documentation/Photos		\$500.00		
		Attic Space	Any Extra costs associated with the project will come out of the artist fee.			
		Total:		\$82,000.00		

jake balcom

Attachment C

***“From Rails to Trails”***



jake balcom

***“From Rails to Trails”***



jakebalcomsculpture.com

***“From Rails to Trails”***



*Columbine, Scarlet Paintbrush,  
Mules Ear flowers were used as  
inspiration*

*Arrangement of flowers, the  
number of blooms and leaves, and  
the placement of the blooms and  
leaves can be changed. Final  
composition will be determined  
in concuntion with the City of  
Truckee.*

## “From Rails to Trails”

**Size:** 18' T x 14' W x 11'D

**Weight:** Total weight is between 2500 and 3200 lbs depending on what the engineer specifies for the structural material. Two thirds of that weight is in the bottom 7 feet of the sculpture.

**Materials:** 316 stainless steel with a satin finish, oxidized steel, and river rock.

**Fabrication:** The flowers are created with hollowforms giving them a very realistic look as well as making them very strong and durable. The satin finish subtly reflects light and color without a lot of harsh glare. Unique grinding patterns is will be used to accent the shapes of the petals similar to the image to the right.



*Example of the finish on the flowers*



**Maintenance:** Virtually none. The stainless steel Corten steel will withstand the midwest weather and any graffiti can be removed by chemical or mechanical means.

**Installation:** The sculptural spiral base is installed first and secured to the footing with masonry anchors. Then the two flower stems are installed and secured to both the footing and the spiral. The flower petals are then installed by inserting the stems into sockets and securing with security screws. I will be on site for the install and can install the flower blooms.

**Footing:** The Footing Design has not changed from that described in the previous proposal.

**Safety:** Although the flower blooms and petals will be structurally strong enough to support a person, the blooms will be arranged in a tight cluster. This “congestion” of elements will make it extremely difficult to climb.

jake balcom

***“From Rails to Trails”***



***Views of the sculpture as you progress around the roundabout.***

## ***“From Rails to Trails”***

***I felt that the Mules Ear flowers were out of proportion so I scaled them down a bit in these renderings so you could see a more proportional composition. The image on the right is such a great angle for this concept.***



***“From Rails to Trails”***

***Alternate Views***



***With this arrangement the “tracks” really feel like  
a hiking trail winding up an incline through trees.  
In this case though, the “trees” are giant flowers.***

jake balcom

***“From Rails to Trails”***

***Alternate Views***



***“From Rails to Trails”***



***Lupine***

***Fireweed***

***Columbine***

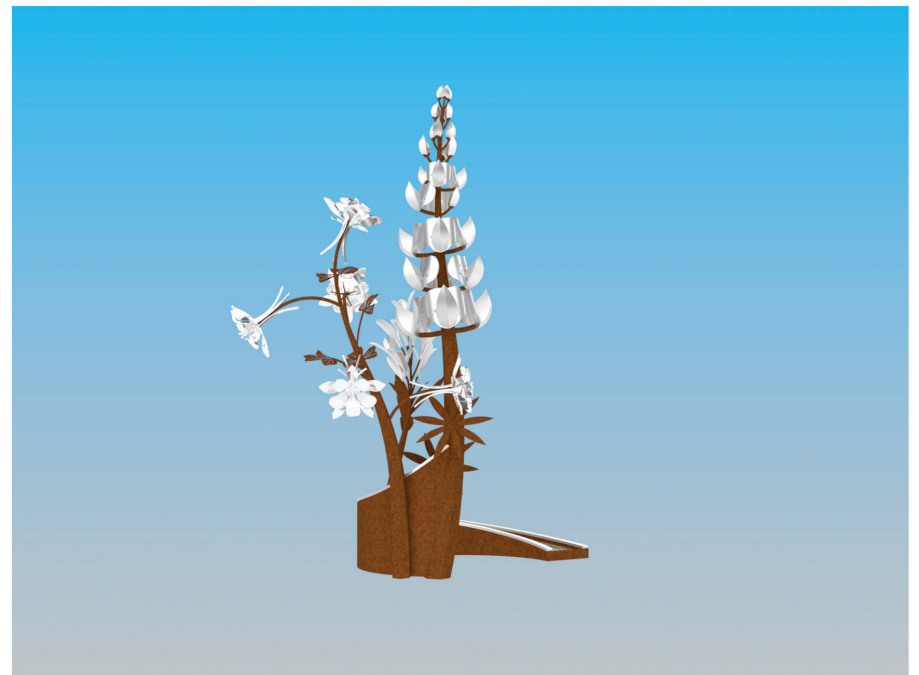
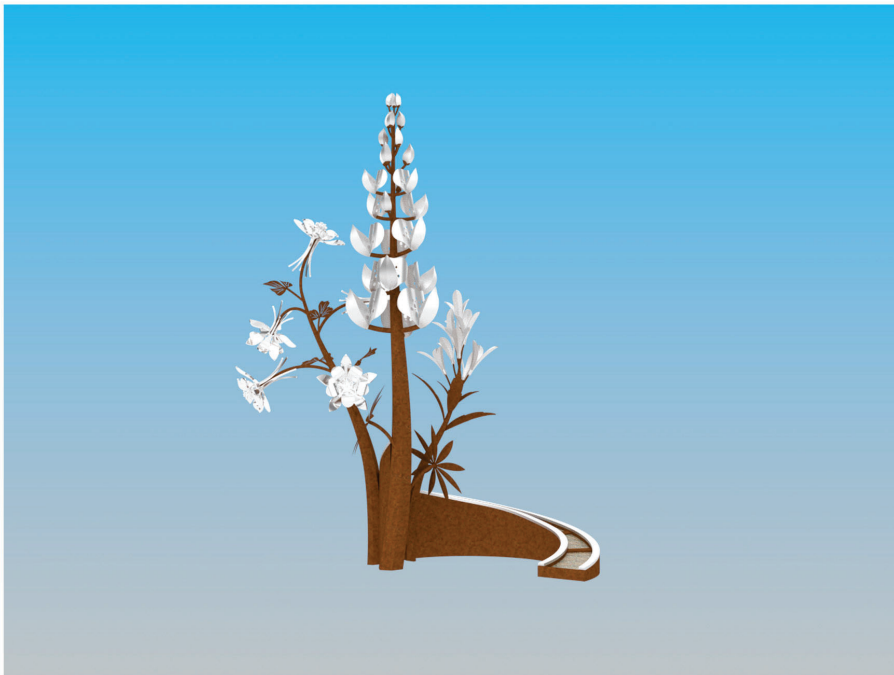
***Scarlett  
Paintbrush***

***Mules Ear***

***Here are a few examples of possible flowers. I am more than willing to work up designs for flowers that are not shown here. The size, petal density and size, leaf density and size, and composition are flexible.***

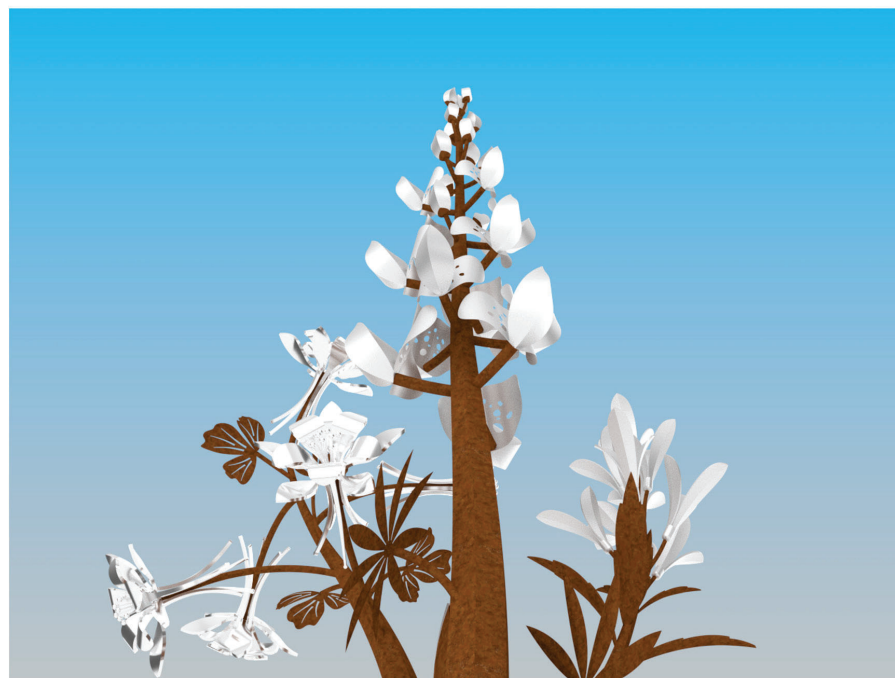
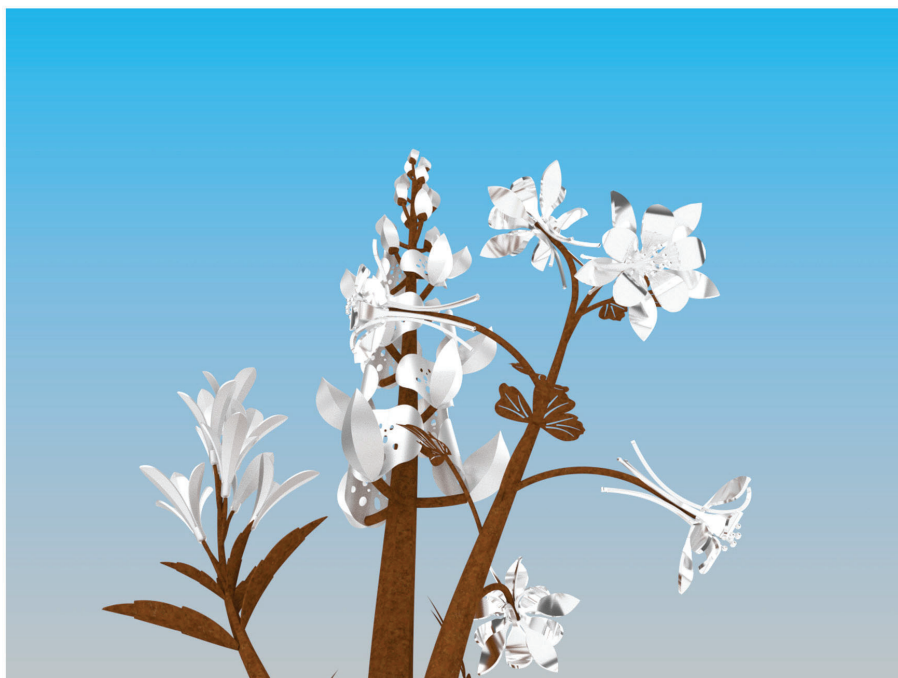
***“From Rails to Trails”***

*Here is an example of an alternate composition using Lupine, Columbine, and Scarlet Paintbrush.*



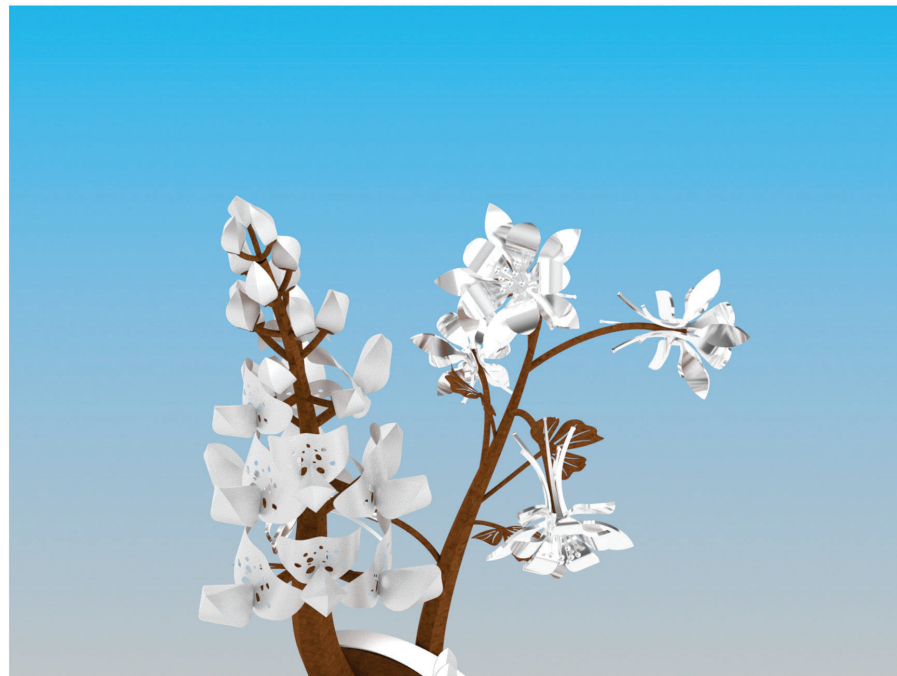
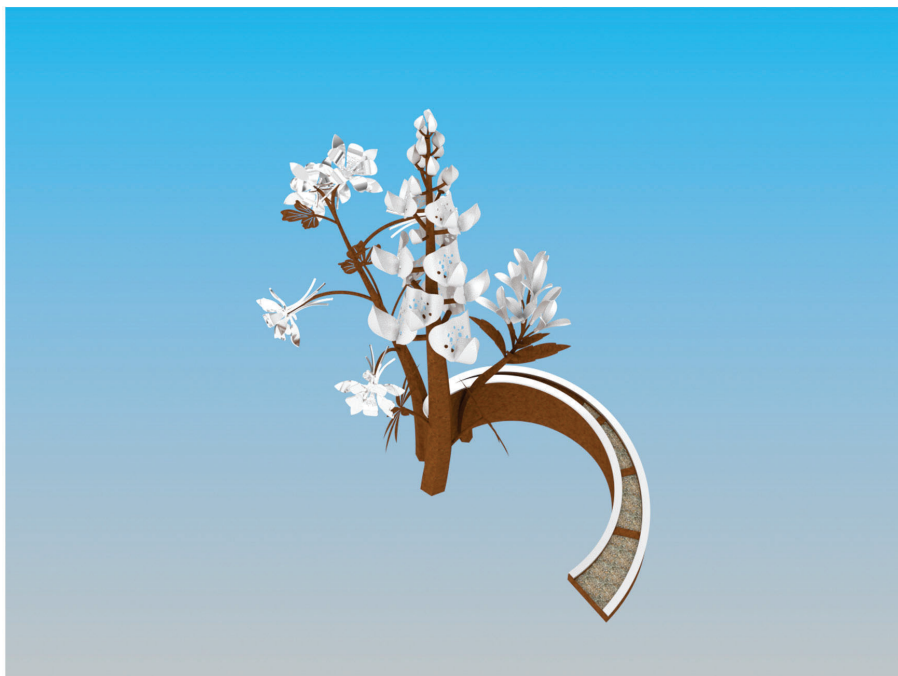
***“From Rails to Trails”***

*Detail views of the alternate composition.*



***“From Rails to Trails”***

*Detail views of the alternate composition.*



"From Rails to Trails" Budget					
		Artist Fee		\$8,000.00	
		Engineering		\$5,000.00	
		Metal Materials			
		Structural Steel and base plates		\$3,800.00	
		Steel Sheet Metal		\$4,200.00	
		316 Stainless Steel		\$4,500.00	
		Electrical and Lighting		n/a	
		Other Materials			
		decorative stone		\$500.00	
		Laser Cutting		\$3,000.00	
		Other Subcontractors		n/a	
		Supplies			
		Includes welding wire, sheilding gas, grinding discs, bolts and hardware, finishing media, etc.		\$1,500.00	
		Fabrication			
		600 hours at \$60/hr		\$36,200.00	
		Surface Finishing			
		80 hours at \$60/hr		\$4,800.00	
		Paint		n/a	
		Crating/loading		\$2,000.00	
		Shipping		\$6,000.00	
		Installation			
		hotel,per diem, installing blooms		\$2,000.00	
		Documentation/Photos		\$500.00	
		Attic Space	Any Extra costs associated with the project will come out of the artist fee.		
		Total:		\$82,000.00	