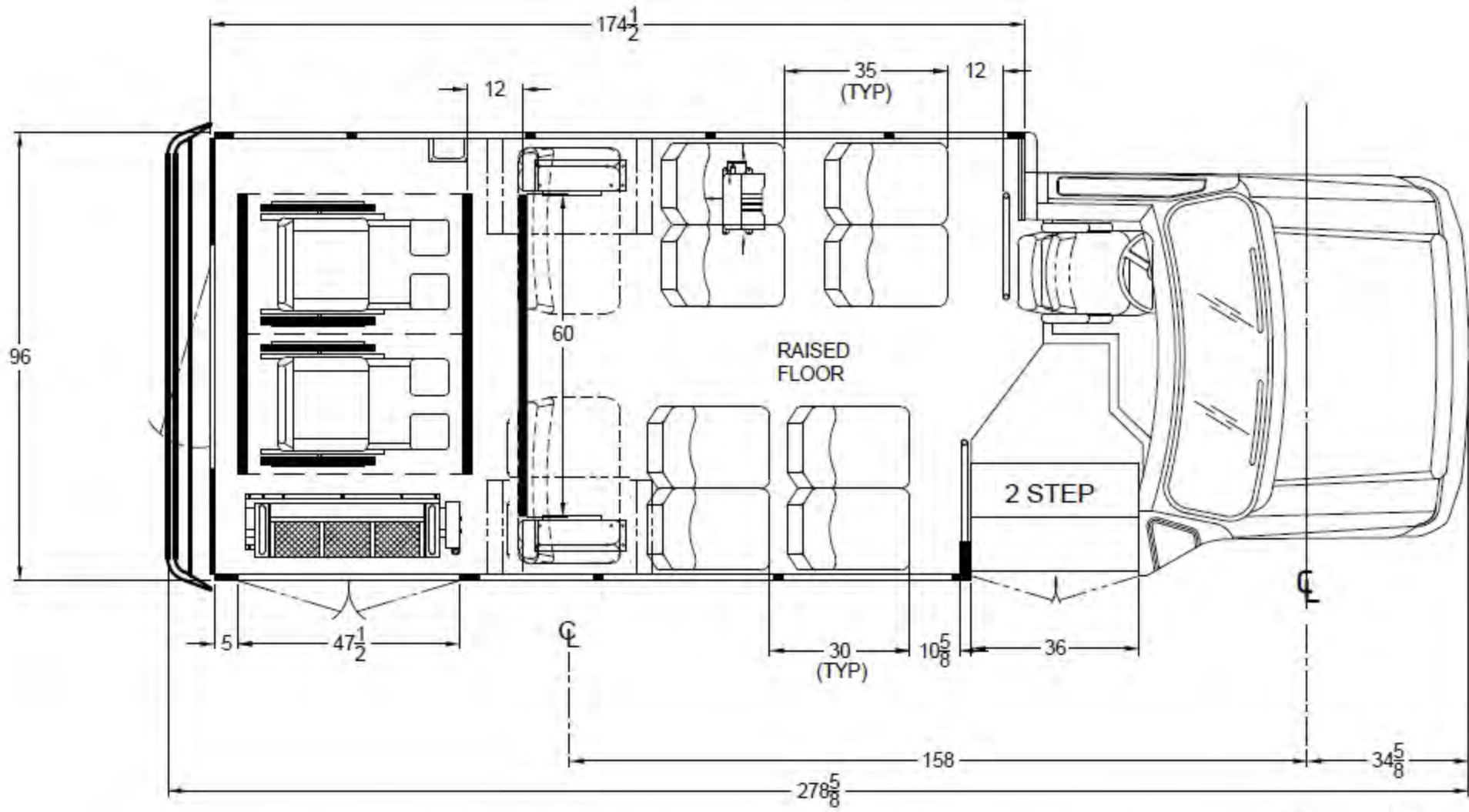
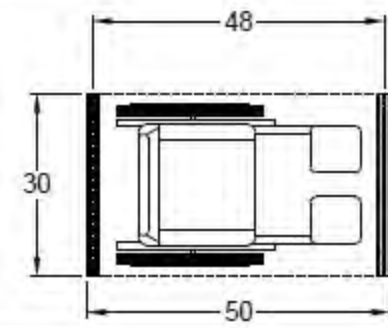




CaIACT MBTA RFP #20-01 - Class B - Quote Sheet (Rev 2022)					
Vehicle Type:	Class B - Starcraft Bus (Allstar)	Date:	6/13/2025		
Contact:	Anthony Donahue	Lift Info:	<input checked="" type="checkbox"/> Braun <input type="checkbox"/> Front <input checked="" type="checkbox"/> Rear		
Agency:	Town of Truckee	Seat Material Level:	Level 5		
Address:	870 Cabin Creek Rd	Seat Color:	Blue Docket 90		
City, State, Zip:	Truckee, CA 96161	Flooring and Color:	Gray Gerflor		
Phone:	530-582-2493	Salesperson:	JR Castro		
E-Mail:	axd@paratransit.net	Salesperson Cell:	909-731-5274		
Delivery:	120-150 days after receipt of order	Salesperson E-Mail:	jcastro@model1.com		
NOTE:	PER THE PURCHASING COOPERATIVE, PRICING SUBJECT TO CHANGE DUE TO PPI (PRODUCER PRICE INDEX) ESCALATION AND/OR MANUFACTURER PRICE INCREASES. PLEASE CONTACT YOUR SALES REPRESENTATIVE TO CONFIRM QUOTED PRICING IS STILL VALID PRIOR TO ISSUANCE OF PURCHASE ORDER.				
Quantity:	Description	Price	Ext. Price	ADA	
1	Starcraft Bus - Class B - (Ford E450)	\$112,461.00	\$112,461.00	\$25,535.00	
Published Options					
2	1 - Freedman Foldaway Seat (double)	\$2,256.00	\$4,512.00	\$4,512.00	
4	9 - Credit for seat delete	-\$131.00	-\$524.00		
1	13 - Freedman Sport 2 Drivers Seat (if not standard)	Standard	Standard	Standard	
1	26 - Raised Flat Floor - (West Coast Style) 1/2 Step Behind Driver	\$578.00	\$578.00	\$578.00	
1	44 - Gerflor/Tarabus floor	\$0.00	\$0.00		
1	47 - 2-Way radio prep	\$185.00	\$185.00		
1	64 - Telma Driveline Brake Retarder	\$10,197.00	\$10,197.00		
1	80 - Sportworks bike rack (Stainless 2 Bike)	\$3,548.00	\$3,548.00		
1	117 - Hanover Front and Side Destination Signs	\$6,584.00	\$6,584.00	\$6,584.00	
1	123 - Delivery Zone 1	\$872.00	\$872.00		
Non-Published Options					
1	2-Way Radio-Kenwood Installed by Banner @ customer location	\$1,350.00	\$1,350.00		
1	4 x 4 Conversion	\$15,500.00	\$15,500.00		
1	AngelTrax Camera System	\$4,995.00	\$4,995.00		
1	Decals-Wrap	\$8,000.00	\$8,000.00		
NOTE :			Class B - Base Price	\$112,461.00	
PER THE PURCHASING COOPERATIVE, PRICING SUBJECT TO CHANGE DUE TO PPI (PRODUCER PRICE INDEX) ESCALATION AND/OR MANUFACTURER PRICE INCREASES. PLEASE CONTACT YOUR SALES REPRESENTATIVE TO CONFIRM QUOTED PRICING IS STILL VALID PRIOR TO ISSUANCE OF PURCHASE ORDER.			Published Options	\$25,952.00	
			Non-Published Options	\$29,845.00	
			Total	\$168,258.00	\$37,209.00
			Doc Prep Fee	\$85.00	
<small>The Non-Taxable Amount is the ADA Equipment in the Base and Added as Options</small>			Non-Taxable	\$37,209.00	
<small>The Taxable Amount Includes the Mobility Rebate of \$1,000.00 For Ford Chassis</small>			Taxable Amount	\$132,134.00	
<div style="border: 1px solid black; padding: 2px;"> Truckee* </div>			Tax Total	\$11,231.39 8.500%	
			Sub-Total	\$179,574.39	
			CaIACT Fee	\$2,523.87	
			DMV E-File Fee:	\$33.00	
			DMV Fee	\$0.00 <i>(Estimated)</i>	
			Tire Fee	\$12.25	
			Total	\$182,143.51	
			Number of Units	2	
			Final Total	\$364,287.02	
Purchasing of vehicles requires a CALACT membership, letter of assignment, and payment of procurement fee. If you have any questions, please contact CALACT direct at 916-920-8018					



12-AMBULATORY + 2-WHEELCHAIR POSITIONS



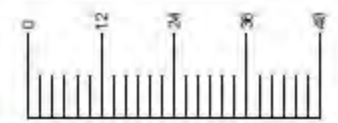
NOTE: SHOWN WITH MID HI FREEDMAN SEATS
 E-450 14,500 GVWR
 THIS FLOOR PLAN IS FOR ILLUSTRATION PURPOSES ONLY.
 A WEIGHT ANALYSIS HAS NOT YET BEEN PERFORMED.
 FINAL APPROVAL WITH A WEIGHT ANALYSIS IS REQUIRED UPON RECEIPT OF A
 COMPLETED ORDER WITH ALL OPTIONS SHOWN.
 OPTIONAL EQUIPMENT MAY BE SHOWN.
 THE SALES ORDER PLACED DICTATES ACTUAL OPTION CONTENT.

DEALER APPROVAL

APPROVED

CUSTOMER SIGNATURE

SCALE
 IN INCHES



THIS DRAWING AND THE INFORMATION THEREON ARE THE EXCLUSIVE PROPERTY OF FOREST RIVER BUS, A DIVISION OF FOREST RIVER. IT SHALL NOT BE COPIED OR DUPLICATED IN ANY MANNER, NOR SHALL IT BE SUBMITTED TO OUTSIDE PARTIES FOR EXAMINATION WITHOUT OUR WRITTEN CONSENT. IT IS LOANED FOR USE WITH REFERENCE TO WORK UNDER CONTRACT WITH, OR PROPOSALS SUBMITTED TO FOREST RIVER BUS, A DIVISION OF FOREST RIVER.

REV. LET.	DESCRIPTION OF CHANGE	BY	CHK	DATE	ECN No.

TOLERANCE UNLESS OTHERWISE SPECIFIED	
WOOD	OTHER
± 1/8"	± 1/16"
± 1"	± 1/2"



TITLE	
12 2 WC 158" WB 163 BDY MODEL 22	
FOREST RIVER BUS	NAME: GINGERICH DATE: 05/12/25
DWG. No. 10 2 WC 1 DB FOLD 158 163-20 FRB	

MODEL 1 COMMERCIAL VEHICLES

14740 Ramona Ave.
Chino, CA. 91710




QUOTED PRODUCTS	
MODEL & DESCRIPTION	QTY
 <p>V862HC Vulcan Series 8-Channel HD-IP Mobile Digital Video Recorder <ul style="list-style-type: none"> • 8 Channels with 8 Channels D1, HD1, 720P, or up to 1080P + 2 Channels IP 720P, 1080P, up to 4MP • Patented Hybrid Component Modular Design • Supports 8-Channel Hard Drive (Gold Security) • 64GB SD Card for Redundant Recording • Built-in Wi-Fi Module • Built-in G-Force Sensor • Vandal-Resistant Locking Hard Drive • Panic Button • H.264/H.265 Compression </p>	1
 <p>SSD21BM2 Solid State 2TB M.2 SATA Hard Drive for 3.5" Tray REQUIRES PURCHASE OF HARD DRIVE TRAY We recommend the use of storage media provided only by AngelTrax for our recording devices. AngelTrax hard drives and SD cards are optimized for time-lapse video surveillance and are designed to withstand extreme temperatures. Standard hard drives and SD cards purchased through consumer retailers are not made for surveillance devices and have been known to stop functioning at any time without warning, causing a loss of video.</p>	1
 <p>MSD64GB 64GB microSD Solid-State Memory Card We recommend the use of storage media provided only by AngelTrax for our recording devices. AngelTrax hard drives and SD cards are optimized for time-lapse video surveillance and are designed to withstand extreme temperatures. Standard hard drives and SD cards purchased through consumer retailers are not made for surveillance devices and have been known to stop functioning at any time without warning, causing a loss of video.</p>	1
 <p>VULFBH Vulcan Series Fabric Button Housing PO color</p>	1

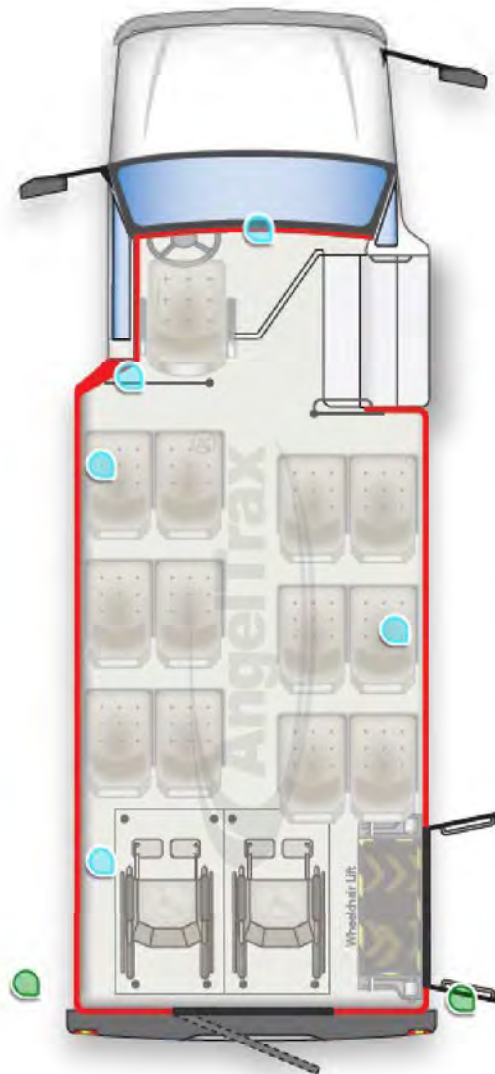
QUOTED PRODUCTS	
MODEL & DESCRIPTION	QTY
 <p>HD1700V Vulcan Series 170-Degree HD 1080P Low Profile Camera - interior over (R), one behind driver and one passenger side <ul style="list-style-type: none"> • 1.7mm Lens with Fully Articulating Lens Coating, Adjustable Vertically and Horizontally at Installation • IP68 Rated Waterproof Interior/Exterior Camera • 1080P HD • 2.12 Megapixels • Noise-Reduced Microphone • Vandal-Resistant Coating • Scratch-Resistant, Anti-Glare Glass Lens Cover • Infrared </p>	1
 <p>HD3600V Vulcan Series 360-Degree HD Low Profile Camera - over driver looking at door <ul style="list-style-type: none"> • 3.6mm Lens with Fully Articulating Lens Coating, Adjustable Vertically and Horizontally at Installation • IP68 Rated Waterproof Interior/Exterior Camera • 1080P HD • 3 Megapixels • Noise-Reduced Microphone • Vandal-Resistant Coating • Scratch-Resistant, Anti-Glare Glass Lens Cover • Infrared • For use in school bus SAV applications as overview camera when equipped with YCU-01 yellow housing </p>	1
 <p>HDCOPILOTCAM High-Definition 2.1mm 1080P Dual Windshield Camera - out front windshield, rear to rear <ul style="list-style-type: none"> • 2.1mm Lens (Each Camera) • Windshield Mounted • 123-Degree Wide-Angle View of Vehicle Interior and Through Windshield • 1080P HD • Recorded in 112MP Resolution • Noise-Reduced Microphone • Vandal-Resistant Coating • Scratch-Resistant, Anti-Glare Glass Lens Cover • Infrared (Interior Camera Only) </p>	1
 <p>IPX26V2 Vulcan Series Low Profile 2.6mm 4MP Exterior IP Camera - exterior rear on driver and passenger side looking forward <ul style="list-style-type: none"> • 2.6mm Lens • Adjustable Lens Housing for Mounting on Either Side of Vehicle • IP67 Rated Waterproof Exterior Camera • 4 Megapixels • Anti-Vibration, Vandal-Resistant Coating • Scratch-Resistant, Anti-Glare Glass Lens Cover • Super Infrared </p>	2
 <p>HD9CBL 29.53 ft. HD Camera Cable</p>	4
 <p>HD12CBL 39.37 ft. HD Camera Cable</p>	1
 <p>HD18CBL 59.24 ft. HD Camera Cable</p>	1

Setting the example
the industry follows

[Type here]

QUOTED PRODUCTS	
MODEL & DESCRIPTION	QTY
 CAT50CBL CAT5e Shielded Camera Cable, 50 Ft • RJ45 Connection • Compatible with most Vulcan Series MDVRs and MNVRs	2
 GPSACT1 Vulcan Series Active GPS Antenna • Compatible with Vulcan Series VXTAI, VEX3 and Y16-95 MDVRs	1
 VULPWRKEY Security Key USB 3.0 for Hard Drive Version Vulcan Series MNVRs, MDVRs	1
CONT3RD Installation Not Included. Installation to be performed by Dealer or End User as specified by Dealer.	1
SHIPPING/HANDLING Shipping and Handling Charges: 1 custom box • Optional items are not included in the calculation.*	1

TOWN OF TAHOE - Model One - June 2025 - V862HC DVR with 8 cameras ((co-pilot is one camera with two connections.



[Type here]

MODEL 1 COMMERCIAL VEHICLES

14740 Ramona Ave.
Chino, CA, 91710



Item #	Item Name	Item Description
69922	NX-3720HGK	VHF (136-174MHz), 50W , 512 CH, 128 Zones NX-3000 Series Multi-Protocol Radios. Supporting both NXDN® and DMR Tier II digital protocols as well as mixed digital & FM analog operation, these radios are versatile and powerful performers for a broad range of enterprise and operation critical applications. Engineered to be compact and durable, the portables are packed with convenient features like Bluetooth®, built-in GPS and world renowned KENWOOD audio with Active Noise Reduction (ANR). Two mobile and three portable models are available with options including full keypad with LCD, standard keypad with LCD and a large 4-way D-pad, and basic model without LCD or keypad.
4794	QW 152-TESSMD	Extra Thick Plate Mount Kit UHF Female Vehicular NMO Thru Hole Mounts
4804	VTPM	
3440	PP18XJ	18' PL259 TO PL259 COAX (RG58A/U)
80	21 Two-Way Install Labor	PER VAN

*Setting the example
the industry follows*

[Type here]



*Bus photo is not to exact specifications

Class B Standard Build Options

Allstar 22 158" WB E-450 7.3L Premium Gas Engine W/240 Amp Ford Alt	ST	93109		1
SPECIAL INSTRUCTIONS OR NOTES				1
SEE BOTTOM OF ORDER FOR WARRANTY				NOTE 1
Dealer to Perform 4-Wheel Alignment in California				NOTE 1
Dealer to Weigh Each Bus on California Certified Scale				NOTE 1
No Tow Vehicle Allowed During Delivery				NOTE 1
Ship 4-Corner Weight Sheet with Every Vehicle				NOTE 1
Use 250 lbs Per Wheelchair Position				NOTE 1
Parts Manual with As-built Electrical Schematics				NOTE 1
All Excessories Except Lights, WC Lift & Mobile Radio (If Equipped) Are				NOTE 1
Wiring Harnesses Supported Every 24" Maximum				NOTE 1
No Butt Connectors Allowed				NOTE 1
If Driver Switch Panel is on Engine Cover, Then a Quick Disconnect is Required				NOTE 1
Fast Idle: 1500 RPM on Gas - Fast Idle to Engage if Voltage Drops Below 12.5				NOTE 1
Install Dome Light With Every Row of Seats, Including WC Position, Must				NOTE 1
Ground Engine to Chassis Frame, Body to Chassis Frame, Lift Pump Housing				NOTE 1
Hip-To-Knee Spacing 27" Minimum				NOTE 1
Seat Track Not Extend More than 6" Past Seats				NOTE 1
Undercoat Metal Skirts				NOTE 1
Ground to First Step Height Shall Not Exceed 12.5" Unloaded				NOTE 1
304SS Required for Entry Grabs and Ceiling Grabs				NOTE 1
Ceiling Grab Rails Require Formed Elbows - No End Caps				NOTE 1
AC & Heater Hoses Supported Every 24" Minimum				NOTE 1
Build Front Driver Storage Compartment as Large as Possible, For Storage of				NOTE 1
Install Toolbox Next to Lift if Space Allows				NOTE 1
Convex Mirror Must Avoid Sun Visor and Overhead Door				NOTE 1
Headlight Aiming Certificate - Ship with Bus				NOTE 1
Water Test Certificate - Ship with Bus				NOTE 1
Driveline Metal Guards for Each Section of Shaft				NOTE 1
All Harnesses Secured to Frame at Maximum of 24"				NOTE 1
P-Clamps Added as Deemed Necessary by MBTA Inspector				NOTE 1
Batteries Must Be Same Type (No Mismatch) (1 In Tray - 1 Underhood)				NOTE 1
Continuous Run Battery Cables				NOTE 1
Slide Blocks To Hold Batteries In Place				NOTE 1
Floor Track Will Not Be Installed in Any Area not Covered by a Fixed Seat				NOTE 1
Operations Manual - Covering Conversion Features as Listed				NOTE 1
Parts Book, Operating Instructions, Troubleshooting Guide, Inspection &				NOTE 1
SPECIAL BUILD OPTIONS				1
Driver Entry Grab Steel Reinforced Plastic - Nutsert Install	ST	99		1
(3) GROUND WIRES TO BE ZERO OUGHT GAUGE, TO BE CONTINUOUS	ST	99		1
Interlock on Entry Door - Must Be in Park to Operate	ST	99		1
ENTRY DOOR HEADER ACCESS PANEL DOOR MUST BE HINGED WITH 2	ST	99		1
Battery Tray: SS Tray & Slides Per Standard Options Below. Must Extend at	ST	99		1
Install Battery Cable Wiring Diagram Inside Battery Access Door	ST	99		1
Decal: Battery Disconnect, Emergency Use Only	ST	99		1
Stainless Steel Battery Hold-Down Hardware	ST	99		1
Add 2nd Heater Line Brass 1/4 Turn Valve	ST	99		1
Decal: "Heater Shut Off Valve" - Install On Street Side Near Valves	ST	99		1
KEYED LOCK ILO THUMB LATCH FOR ELECTRICAL CENTER DOOR	ST	99		1
5/8", 7 Ply AC Marine Grade APA Plywood Floor	ST	99		1
Upgrade Driver Plexi Barrier: Extend to Within 6" of Ceiling	ST	99		1
14 Gauge Galvanized Steel Wheelwells	ST	99		1
Dual Handles on WC Lift Doors	ST	99		1
Flame Block on Bottom of Driver Seat Cushion (N/A on USSC & Recaro)	ST	99		1
Laminated Modesty Panel, Grey Melamine, Each	ST	99		2
Intermotive Break Out Box	ST	99		1
GENERIC PARTS MANUAL ON FLASH DRIVE	ST	99		1
ELECTRICAL SYSTEM				
Intermotive Flex Tech Electrical System	05	STD		1
SIDEWALL / REARWALL / CEILING				



Sidewall: Grey FRP	05	STD		1
Rearwall: Grey Seaspray Fabric	05	STD		1
Driver Area: Grey Padded Vinyl	05	STD		1
FRP on Ceiling, Grey	05	2289		1
Cove Colored Flooring on Sidewall to Seat Track	05	2238		1
FLOORING - WHITE NOSING IS STANDARD				
Altro Meta Storm	05	2248		1
Yellow Step Nosing - Per Step	05	8820		3
CHASSIS				
Front Mud Flap (1), Passenger Side Only (to be used with Running Board) - NOT AVAILABLE ON FORD TRANSIT	05	2340		1
Heavy Duty Anti-Slip Aluminum Running Board on Driver Side (Large) (NOT AVAILABLE ON FORD TRANSIT)	05	2623		1
Exterior Mirror Set Remote/Heated w/External LED Strip Turn Signal Ford	05	2825		1
Romeo Rim Rear Bumper w/HawkEye RAS Installed	05	2670		1
Valve Stem Extender Inner Dual Rear Wheel, pair	05	8606		1
ENVIRONMENTAL CONTROL				
TRANS/AIR AIR CONDITIONING SYSTEMS				
				1
TRANS AIR TA733 SUPER 75,000 BTU, TA73 EVAP, SMC3L COND, 13 CID COMP 7.3L GAS	ST	99		1
USE #16 SUCTION HOSE IN A/C SYSTEM	ST	99		1
HEATERS				
				1
Hot Water Heater, 35K BTU 3 Speed Low Profile	05	8044		1
MISCELLANEOUS				
				1
Silicone Heater Hose (for rear unit) w/full ring clamps	05	20090		1
ELECTRICAL				
Stainless Batt. Tray w/Std Batt.Box <i>IS 304 REQUIRED?</i> YES	05	2784		1
Stainless Steel Battery Tray Slides ILO Zinc Plated Slides - Extra Charge	05	2869		1
Rotary Disconnect Switch	05	8790		1
Laminated Wiring Schematic ***AS BUILT*** ON ELECTRICAL PANEL DOOR	05	22101		1
Wiring Diagram "AS BUILT" ON USB Flash Drive		STD		1
EXTERIOR LIGHTS				
Surface Mount LED Entry Door Exterior Light - STD Choose Optional Below or Special builds	05	STD		1
LED Rear Center Mount Brake Light, Rectangular	05	20136		1
LED Mid-Ship Turn / Marker Lights	05	20138		1
Independent RED Brake & AMBER Turn Signal Lights	05	20139		1
INTERIOR LIGHTS				
				1
Additional Interior LED Dome Lamp - Each	05	8041		2
AUDIO / VISUAL				
				1
Jensen JHD36AB AM/FM/CD/Clock Blue Tooth/USB Enabled / 4 SPEAKERS PA Ready	05	8830		1
DOORS / HATCH / WINDOWS				
Electric Entry Door is Standard. Add Option #2056 if Manual is Desired				
Passenger Door Electric (standard)	05	20163		1
Passenger Door 36" ROUGH OPENING (STANDARD)	05	2063		1
Exterior Passenger Entrance Door Key	05	8133		1
Solid Window(s) EACH Replace T-Slide(s) Enter Specific Instructions in Row Below	05	20187		1
STREET SIDE REAR		NOTE		1
INTERIOR				
				1
Driver Coat Hook	05	8769		1
LUGGAGE RACK / STORAGE				
				1
Driver Storage in Cab Overhead with Lock	05	20192		1
PARATRANSIT OPTIONS				
				1
Double W/C Doors w/ Windows, LED Interior Light, Leaf Spring, LED Exterior Lighting	05	20206		1
IS THE LIFT IN THE FRONT OR REAR OF THE UNIT?				1
BRAUN LIFTS				
				1
Braun Century NCL917-2 800# Lift (33"x51")	05	8744		1
LIFT FAST IDLE WITH 403 INTERLOCK				
				1
Intermotive Gateway 508-F Ford E or 517-F Transit Fast Idle with Lift Interlock	05	99		1
Q Straint W.C. Securement Kits, Accessories				
				1
Q10007 - 4 QRT 360 Retractor Tie Down L track & Q8-6326-A1 Comb-Lap/Shldr	05	8826		2



Q5-7580-4 18" Blue Webbing Loop (each)	05	20250		8
Q5-6327 84" Postural Belt with Padding - Black Webbing	05	20251		1
Q-Straint Belt Cutter (ship loose)	05	8179		1
Miscellaneous Accessories				1
Priority Seating Sign **Required for ADA Compliance**	05	8104		1
Tool Box Wheelchair Belt Storage	05	20257		1
SAFETY OPTIONS				
5 Lb Fire Extinguisher	05	8089		1
16 Unit First Aid Kit	05	8090		1
Body Fluid Kit	05	20264		1
Emergency Triangle Kit	05	8091		1
Back-Up Alarm SAE Type B 107 db(A) Ecco 575	05	2880		1
STANDARD ROSCO STSK4750 BACK-UP CAMERA SYSTEM W/ 7" REARVIEW MONITOR / MIRROR COMBO	05	STD		1
Interior Convex Mirror 6"x9"	05	20276		1
Red Light Over Emergency Exit Ea: ON:		SIDE & REAR EGRESS WINDOWS	05	8155
Yellow "Standee" Line	05	8802		1
GRAB RAIL / STANCHION / PANELS				
Ceiling Grab Rail - Install on Both Sides	05	99		1
Left Hand Entry Vertical Grab Rail - 1 1/4"		STD		1
1 1/4" Dual Entry Grab Rails Parallel to Entrance Steps (both sides)	05	8130		1
Stanchion and Modesty Panel at Entry Door		STD		1
SEATING - DRIVER				1
SHIELD Sport 2.0 Recliner RH Adjustable LeMans Arm, 2 Way Adjustable Lumbar	05	99		1
FREEDMAN SHIELD DRIVER SEAT FABRICS				1
Driver Seat Cover - Level 4 Ice Pinstripe; Mor-Care; Leathermate	05	2043		1
SEATING - PASSENGER				1
STD RIGID SEATS				1
Mid High Double Seat	05	8067		6
PASSENGER SEAT FABRICS				1
Seat Cover - Level 4 Ice Pinstripe; Mor-Care; Leathermate	05	2074		12
SEAT OPTIONS				1
Anti-Vandal Grab Handle, Black Ea on:		ALL SEAT EXCEPT AGAINST REAR WALL	05	2311
Black US Armrest - Each - on:			05	2077
Flame Block Material on Underside of Seat (each)	05	2884		12
SEAT BELTS				1
Seat Belt, Freedman USR Retractable (Per Person)	05	2282		12
Seat Belt Extension, 12" (P/N 56410) FOR USR SEAT BELTS	05	8771		2

SUMMARY OF STANDARD WARRANTIES

(Provide complete warranty information and parchment with proposal)

Warranty	Miles	Years	Warranty Details
Body Structure	100,000	5	See attached Warranty Info
Chassis	36,000	3	See attached Warranty Info
Engine	60,000	5	See attached Warranty Info
Transmission	60,000	5	See attached Warranty Info
Air conditioner	Unlimited	2	See attached Warranty Info
Lift/Ramp	Unlimited	5	See attached Warranty Info
EV Battery	N/A	N/A	N/A
EV Conversion/Installation	N/A	N/A	N/A
CNG Warranty (Install and tanks)	N/A	N/A	N/A



FOREST RIVER BUS

STARCRAFT | Allstar



MODEL1
COMMERCIAL VEHICLES

(888) 633-8380 | MODEL1.COM

moving forward together.

Functionality + accessibility.



SAFETY. PERFORMANCE. DURABILITY.

The Starcraft Allstar remains one of the best-selling shuttle buses in the market. Standard equipment includes a backup camera for safety and 4-inch low standard floor wheel wells for passenger seating comfort, making the Allstar a great addition to your fleet.

PASSENGERS



17 - 25

BUS LENGTH



21' - 25'

BUS CHASSIS



FORD
E350/450

WHEELCHAIR



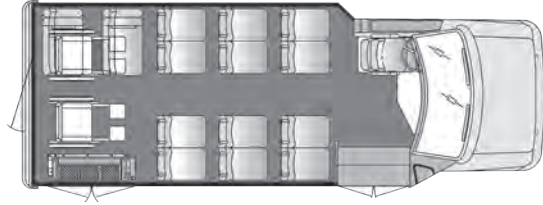
SIDE ACCESS

moving forward together.

Versatility + capacity options.

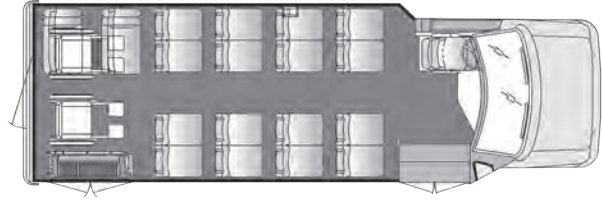
12

12 passenger + 2 wheelchair
w/foldaway seats + driver



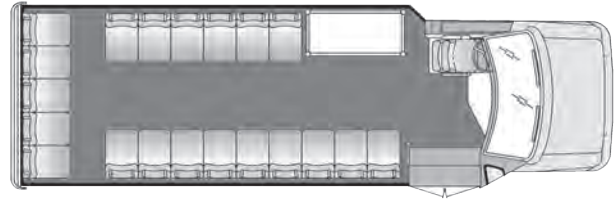
16

16 passenger + 2 wheelchair
w/foldaway seats + driver



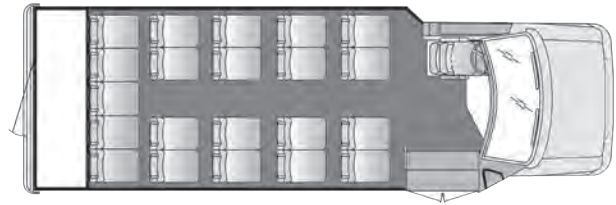
20

20 passenger
w/interior luggage + driver



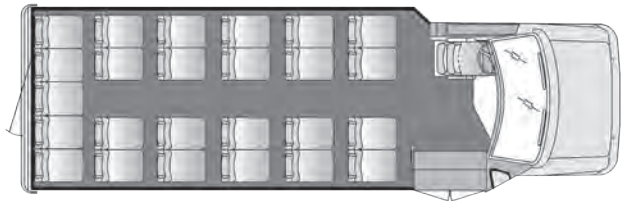
21

21 passenger
w/rear luggage + driver



25

25 passenger
+ driver



Specifications.

Length	20'	22'	24'	25'
Wheelbase	138"	158"	158"	190"
Chassis	E350	E450	E450	E450
Engine	7.3L Gas	7.3L Gas	7.3L Gas	7.3L Gas
GVWR	11,500 lb.	12,500 lb.	14,500 lb.	14,500 lb.
Passenger Capacity*	17	21	21	25
Overall Width	96"	96"	96"	96"
Overall Height	115"	115"	116"	116"
Interior Width	93"	93"	93"	93"
Interior Height	80"	80"	80"	80"
Ground to Int. Floor	30"	30"	30"	30"
Ground to 1st Step	12"	12"	12"	12"
Step Riser	9"	9"	9"	9"
Step Tread	11.5"	11.5"	11.5"	11.5"
Step Width	35.75"	35.75"	35.75"	35.75"
Entry Door Clear Opening w/One Grab Rail	31"	31"	31"	31"
Entry Door Clear Opening w/Two Grab Rails	30"	30"	30"	30"

*All passenger capacities are references and subject to final weight analysis

moving forward together.

Features + options.



Standard Exterior Feature Highlights

- Fully welded steel cage construction meeting all applicable FMVSS requirements
- "Starview" drivers visibility window in front of entry door
- Electric actuated passenger entry door with full length glass
- 36" wide x 36" high upper double T-Slider tempered safety glass windows with climate control tint
- Black powder coated steel rear bumper
- Rear mud flaps
- Pre-painted white aluminum sidewall and skirts
- Fiberglass front and rear caps
- One-piece seamless FRP (fiberglass reinforced plastic) roof
- Breakaway rearview mirrors with built-in convex
- Sealed LED stop, tail, and turn signal lights with LED back-up lights
- LED front and rear marker lights
- Exterior graphics package available in three colors (blue, green or burgundy)

Standard Interior Feature Highlights

- 93" interior width
- 80" interior floor to ceiling height with standard floor (raised floor is 75")
- Floor and wall seat track for flexible seating
- Black slip resistant floor covering
- 5/8" exterior grade plywood flooring
- Ceiling and rear wall fabric for sound abatement
- FRP (fiberglass reinforced plastic) sidewalls for ease of cleaning
- White step nosing
- 1.25" left hand vertical passenger assist rail at entry door
- Intermotive FlexTech Electrical System
- LED entry door step well lights
- LED driver and passenger area lighting
- Non-retractable seat belts

Popular Option Highlights

- Stainless steel wheel inserts
- Luggage Storage areas (overhead luggage racks with reading lights, interior luggage racks, rear luggage area)
- Rear emergency door with window(s)
- Passenger area rear heat and air conditioning
- Passenger grab rails
- Padded vinyl or cloth walls and ceiling
- Audio and video systems
- Mid back or high back seating
- ADA and FMVSS compliant wheel chair lifts and securement systems
- Fiberglass side walls and skirts

© 2023 Forest River Bus, LLC. All information contained on this website is believed to be accurate at the time of publication. However, during the model year, it may be necessary to make revisions, and Forest River Bus reserves the right to make changes without notice, including prices, colors, materials, equipment, and specifications, as well as the addition of new models and the discontinuance of models shown on this website. Therefore, please consult with your Forest River Bus dealer and confirm the existence of any material, design, or specifications before your purchase.



(888) 633-8380 | MODEL1.COM

moving forward together.