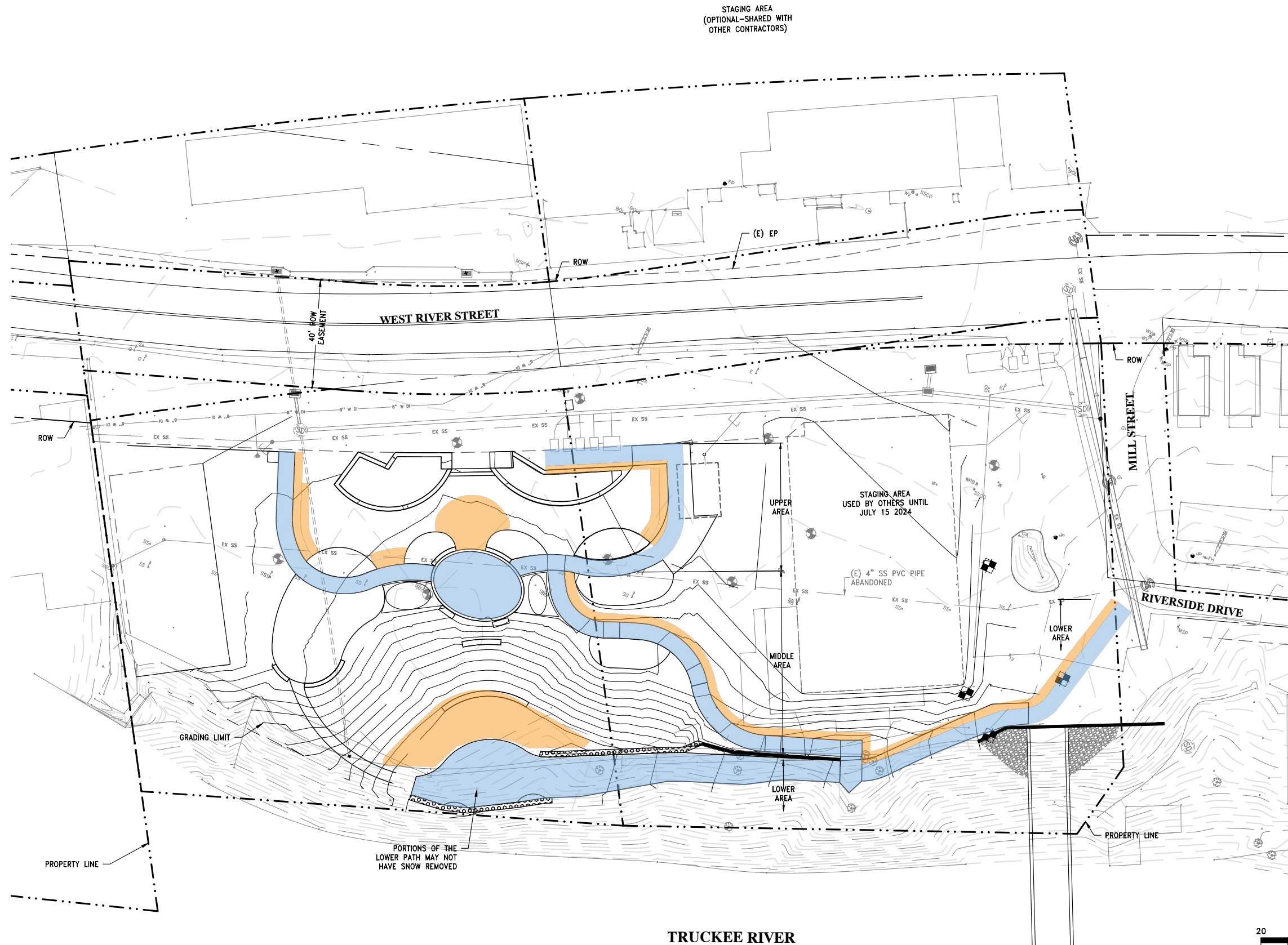


# ATTACHMENT D

12/15/2023 3:25 PM

P:\2019 Projects\19126 - Riverside Park\ACAD\FIGURES\19126 SNOW STORAGE FIGURE.dwg



### SNOW STORAGE CALCS:

**UPPER AREA:**  
 PATH SNOW REMOVAL = 2,055 SF  
 SNOW STORAGE = 1,030 SF  
 PERCENT OF SNOW STORAGE = 50%

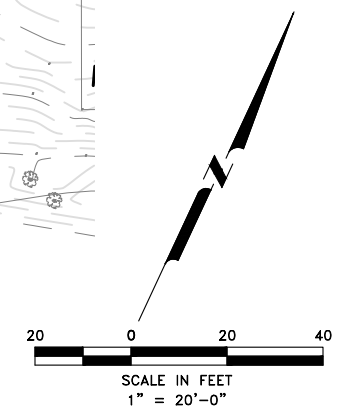
**MIDDLE AREA:**  
 PATH SNOW REMOVAL = 913 SF  
 SNOW STORAGE = 456 SF  
 PERCENT OF SNOW STORAGE = 50%

**LOWER AREA:**  
 PATH SNOW REMOVAL = 2,857 SF  
 SNOW STORAGE = 1,433 SF  
 PERCENT OF SNOW STORAGE = 50%

**TOTAL:**  
 SNOW REMOVAL AREA = 5,825 SF  
 SNOW STORAGE REQUIRED 5,825 SF/2 = 2,913 SF  
 SNOW STORAGE PROVIDED = 2,919 SF  
 PERCENT OF SNOW STORAGE = 50%

### LEGEND:

- SNOW REMOVAL ON PATHS/AREAS MADE WITH PAVERS
- SNOW STORAGE AREA



**SNOW STORAGE PLAN**

**TRUCKEE RIVER**

No.	Date	REVISIONS	BY	APPD
1				
2				
3				
4				
5				

<b>TITLE</b> WEST RIVER STREET REDEVELOPMENT SNOW STORAGE	<b>PROJECT</b> 10257 WEST RIVER STREET, 019-130-004 TOWN OF TRUCKEE 10183 TRUCKEE AIRPORT RD TRUCKEE, CA 96161
<b>EASTERN SIERRA ENGINEERING</b>	
<small>CIVIL ENGINEERING &amp; CONSTRUCTION SERVICES 4110 SOUTH RIVER DRIVE RENO, NV 89521 PHONE: (775) 828-7221 FAX: (775) 828-7221</small>	
Designed: <b>DDJ</b>	
Drawn By: <b>JC</b>	
Approved By: <b>DDJ</b>	
Job No: <b>19126</b>	
Scale: <b>AS SHOWN</b>	
Date: <b>XX-XX-20XX</b>	
SHEET No.	
<b>1 OF 1</b>	