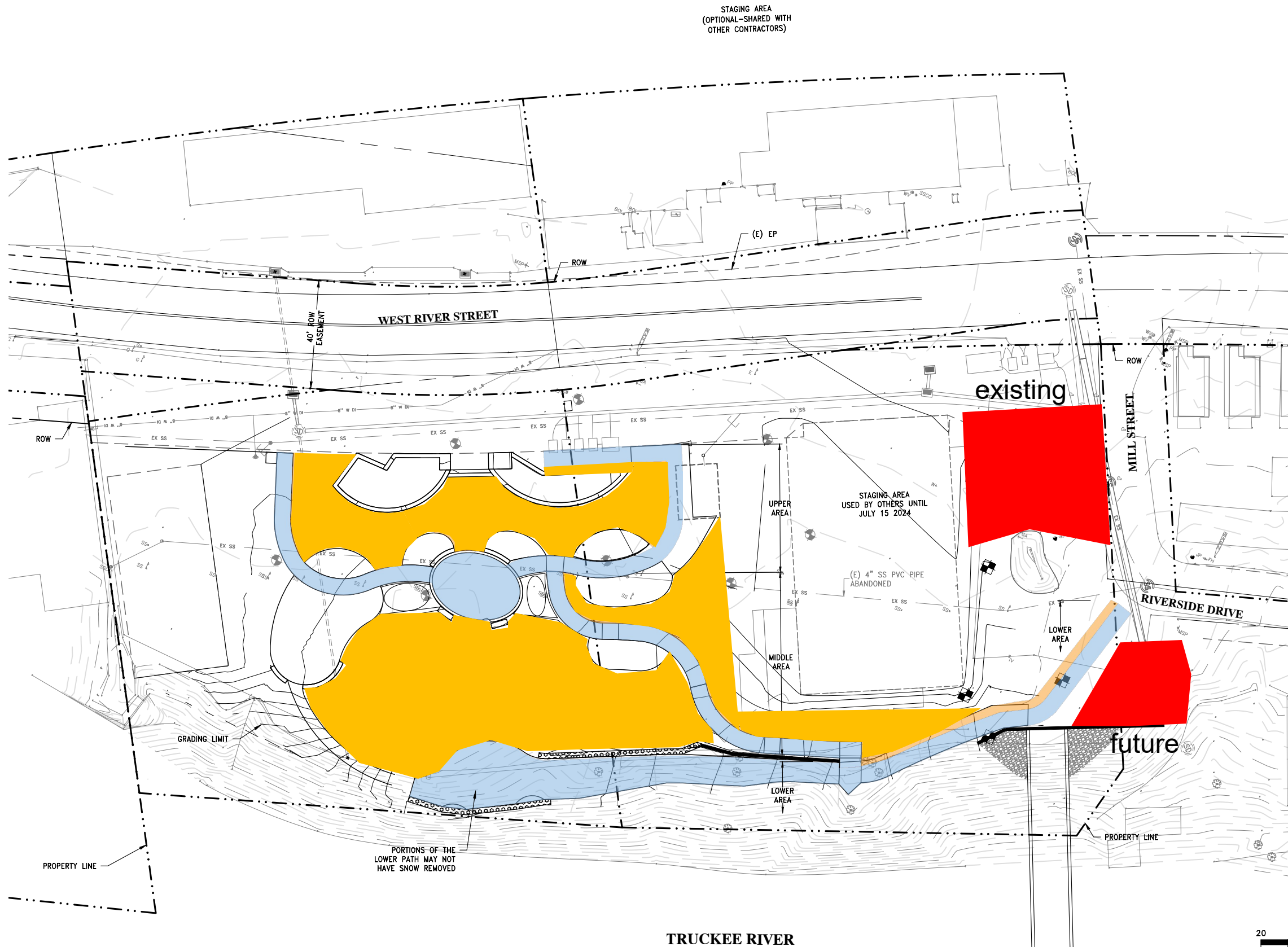


ATTACHMENT E

12/15/2023 3:25 PM

P:\2019 Projects\19126 - Riverside Park\ACAD\FIGURES\19126 SNOW STORAGE FIGURE.dwg



SNOW STORAGE CALCS:

UPPER AREA:
 PATH SNOW REMOVAL = 2,055 SF
 SNOW STORAGE = 1,030 SF
 PERCENT OF SNOW STORAGE = 50%

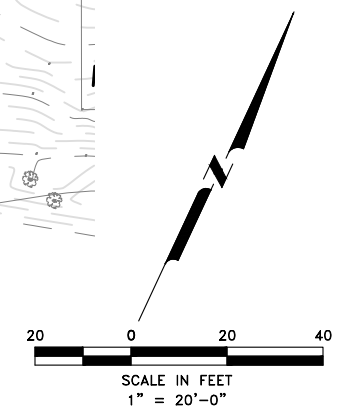
MIDDLE AREA:
 PATH SNOW REMOVAL = 913 SF
 SNOW STORAGE = 456 SF
 PERCENT OF SNOW STORAGE = 50%

LOWER AREA:
 PATH SNOW REMOVAL = 2,857 SF
 SNOW STORAGE = 1,433 SF
 PERCENT OF SNOW STORAGE = 50%

TOTAL:
 SNOW REMOVAL AREA = 5,825 SF
 SNOW STORAGE REQUIRED $5,825 \text{ SF} / 2 = 2,913 \text{ SF}$
 SNOW STORAGE PROVIDED = 2,919 SF
 PERCENT OF SNOW STORAGE = 50%

LEGEND:

- SNOW REMOVAL ON PATHS/AREAS MADE WITH PAVERS
- SNOW STORAGE AREA
- SNOW STORAGE FOR RIVERSIDE DRIVE



SNOW STORAGE PLAN

TRUCKEE RIVER

No.	Date	REVISIONS	BY	APPD
1				
2				
3				
4				
5				

TITLE WEST RIVER STREET REDEVELOPMENT SNOW STORAGE	PROJECT 10257 WEST RIVER STREET, 019-130-004 TOWN OF TRUCKEE 10183 TRUCKEE AIRPORT RD TRUCKEE, CA 96161
EASTERN SIERRA ENGINEERING CIVIL ENGINEERING & CONSTRUCTION SERVICES 4120 TRUCKEE AVENUE RENO, NV 89521 PHONE: (775) 828-7221 FAX: (775) 828-7221	
Designed: DDJ Drawn By: JC Approved By: DDJ Job No: 19126 Scale: AS SHOWN Date: XX-XX-20XX	
SHEET No. 1 OF 1	