



#### A. General Information

1. **Name:** Truckee Trails Foundation (TTF), California Class A License #1108018
2. **Project Title:** Thelin-to-Legacy Dirt Trail
3. **Type of Project:** Construction
4. **Total Project Cost:** \$176,327      **Amount Requested:** \$150,086
5. **Organization experience:** The Truckee Trails Foundation has built over 35 miles in the last seven years, creating a variety of trail opportunities for all skill levels and user-styles. This includes two mountain bike trails, two nature trails, and the rest multi-use trail suitable for all non-motorized uses (and in some cases, Class 1 e-bikes). Our construction projects have always been completed on time and within budget. Clients have included the Tahoe National Forest, Truckee Donner Land Trust, Tahoe Donner Association, Glenshire Residents' Association, County of Nevada, Sugar Bowl, and Bear Yuba Land Trust. TTF has a full-time Trail Engineer and highly trained seasonal trail crew who will be returning for the 2025 season.
6. **Experience with permits, licenses, easements, grading permits environmental review:** Truckee Trails Foundation has managed projects involving both NEPA (Pines to Mines Trail) and CEQA (Waddle Ranch Trails), as well as all necessary resource studies and permits. TTF has completed grading permits both internally and through a hired contractor.
7. **Department of Industrial Relations/Prevailing Wage Experience:** TTF is registered with the Department of Industrial Relations and has experience with prevailing wage projects. TTF utilizes a contractor to complete all DIR paperwork, and this is included in our estimates for phases involving trail construction.
8. **Responsible Parties:**
  - Allison Pedley, Executive Director – 530.575.8372 – [allison@truckeetrails.org](mailto:allison@truckeetrails.org)
  - Larry Lehman, Trail Engineer – 530.575.7682 – [larry@truckeetrails.org](mailto:larry@truckeetrails.org)

#### B. Project Description, Goals, & Benefits:

1. This project will involve construction of a 3,535 linear-foot trail connecting the Ponderosa Palisades neighborhood with Segment 4A of the Truckee River Legacy Trail. Because of the steep and very rocky slopes, this will be an unusually difficult construction process, and TTF will be hiring an outside team member to assist.

- a. **Provide a site plan and topographic map.** A site plan and topographic map are both included at the end of this application.
- b. **Describe why the Project is needed and how the Project will address a missing connection by providing new trail opportunities to significantly increase use, improve access and/or protect resources.**

This trail will be bi-directional earthen path open to all non-motorized users and e-bikes, designed to be a convenient and safe connection for residents to walk or ride to downtown Truckee on foot or bicycle. What's more, this trail's connection to the Truckee River Legacy Trail means that users will be able to walk or ride from Ponderosa Palisades to other locations along the entire stretch of the Legacy Trail. Importantly, the only way for residents of this neighborhood to get to town is by a moderately dangerous road with limited sightlines and no bike lanes. This new trail will provide a long-awaited safe and convenient way to get to town and will be a sustainable alternative to the erosive user-created routes that some residents have been creating along that same slope to get to town.

**c. Describe the Project's linkages to population centers, recreation area, or other gathering areas.**

As mentioned, because this trail would connect to the Truckee River Legacy Trail it not only brings users to downtown Truckee, but also to Truckee Springs, the Regional Park, the future library, Riverview Sports Park, Tahoe Donner (via the Trout Creek Trail), Glenshire, and hopefully soon, Donner Memorial State Park.

**d. Describe how the Project will use sustainable design to minimize impacts to natural resources of the Project area.**

Trail construction will follow guidelines and standards of care developed by the United States Forest Service, California State Parks, and the International Mountain Bicycling Association. This includes installing temporary Best Management Practices (BMPs) for erosion control, including silt fencing and/or straw wattles. As well, environmentally sensitive areas will be demarked using construction fencing, including property lines close to construction as well as stockpiles. Because of the steep slopes in this area, numerous switchbacks will be used to ensure the trail does not erode. Grade reversals will also help keep water off the trail. Armoring, which involves reinforcements with rocks, will also help prevent erosion caused by water flow, especially during heavy rains or flooding. As well, stacked rock retaining walls will also be constructed where necessary, to stabilize the tread (see engineering plans for more detail). No work will take place if surface water exists in drainages.

**2. Explain how the project aligns with the both the Trails and Bikeways Master Plan, as well as the Town of Truckee's 2040 General Plan, including how it provides for multiple uses and improves connections in the Active Transportation Network.**

This trail represents Segment 45 among the proposed dirt trails in the Truckee Trails and Bikeways Master Plan. This project also aligns with several Goals and Policies within the Master Plan, including: Planning Goal 1: Trail, Bikeway, and Walkway System (allows multiple users, considers user safety, creates a logical linkage); Planning Goal 2: Connectivity and Continuity (links downtown, residential neighborhoods, commercial, recreational, and educational areas); Planning Goal 3: Design (providing a safe, easily maintained, functional, and consistent design format).

Under the Town of Truckee's 2024 General Plan, this project aligns with its call to implement the Truckee Trails and Bikeways Master plan, create VMT mitigation by improving bicycle and pedestrian network connections, and create safe and new connections to bikeways, parks, and open space.

**3. Describe any additional project benefits, including alignment with other regional plans if applicable.**

As mentioned, this trail will connect with the Truckee River Legacy Trail, which is also part of the regional Tahoe-Pyramid Trail. Furthermore, the Legacy Trail will eventually connect with the future Placer County River Trail which will connect Truckee with Olympic Valley. A trail currently exists from Olympic Valley to Lake Tahoe, so this means that this proposed dirt trail will eventually connect to Lake Tahoe.

Importantly, planning for this trail has been in the works for some time, and the concept has been very well received among local residents.

**4. Describe any permitting that is required, including how CEQA will be addressed.**

CEQA has been completed for this project by the Town of Truckee, in conjunction with the Legacy Trail Phase 4A effort. The necessary grading permit was completed by the Truckee Trails Foundation and approved by the Town of Truckee last year. Additional surveys may be required prior to construction. If so, these will be



conducted by the Truckee Trails Foundation in coordination with the Town of Truckee upon identification of such a need and upon a contract amendment.

## 5. Describe the maintenance plan for the proposed trail.

Truckee Trails Foundation proposes to be the entity responsible for trail maintenance. Each season the crew will perform a trail inspection and make necessary repairs. The exact amount of maintenance performed will be dependent on the winter snow melt but will include removal of downed trees and brush, repair of damaged drainages, repair of damaged trail tread, pruning of foliage, repair of signage, and disposal of trash. The decommissioning any illegally created segments will also be conducted. A proposed budget for this maintenance is included below, beginning in 2026.

## C. Project Budget By Phase

### Phase 1: Trail Planning

- Meetings with Town of Truckee Staff and Truckee Donner Land Trust
- Trail alignment work and grading permit/plans.

Payroll/fringe	\$10,248	
Consultant Fees (engineered plans)	\$4,979	
Grading Permit	\$414	
Project Management/Administration	\$1,500	
<b>Phase Total</b>	<b>\$17,141</b>	<b>Truckee Trails Foundation Private Funding</b>

### Phase 2: Pre-Construction Preparation

- Write letter to neighbors including plant screening and construction information
- Obtain letter from Truckee Donner Land Trust
- Walk alignment with owners/Town staff
- Order and install BMPs

Payroll/fringe	\$3,300	
Materials (wattles, silt fencing, etc.)	\$5,000	
Project Management/Administration	\$800	
	<b>\$9,100</b>	<b>Truckee Trails Foundation Private Funding</b>
Resource Surveys, <i>if necessary, NTE</i>	<b>\$50,000</b>	<b>Measure U Funding</b>
<b>Phase Total</b>	<b>\$59,100</b>	

### Phase 3: Machine Construction

Prevailing wage payroll/fringe	\$36,972	
Equipment rental (mini-excavator) / fuel	\$5,550	
Project Management/Administration	\$5,000	
<b>Phase Total</b>	<b>\$47,522</b>	<b>Measure U Funding</b>

### Phase 4: Hand Construction & Finish Work

Prevailing wage payroll/fringe	\$24,622	
Riprap/delivery	\$10,700	
Equipment rental (track buggy) and fuel	\$3,350	
Vegetation screening	\$1,500	
Signage	\$2,000	
Project Management/Administration	\$3,245	
<b>Phase Total</b>	<b>\$45,417</b>	<b>Measure U Funding</b>

**5% contingency: \$7,147**

<b>Total Cost: Thelin to Legacy Trail Construction</b>	<b>\$176,327</b>
<b>Funds Contributed by Truckee Trails Foundation</b>	<b>\$26,241</b>
<b>Amount Requested, Measure U Funding</b>	<b>\$150,086</b>

#### **5-year Maintenance Plan – Proposed Measure U Funding to the Truckee Trails Foundation 2026-2030**

<b>THELIN-LEGACY MAINTENANCE COST ANNUALLY FOR 5 YEARS</b>							
<u>Annually</u>	<u>Description</u>	<u>Crew hours</u>	<u>Crew \$/hr (3 person crew)</u>	<u>Total labor</u>	<u>Miscellaneous supplies</u>	<u>Inflation (2.5%)</u>	<u>total cost/year</u>
Yr 1	Repair drainage, tread, signage, clear debris	16	\$108.00	\$1,728.00	\$50.00	1.025	\$1,778.00
Yr 2	Repair drainage, tread, signage, clear debris	16	\$110.70	\$1,771.20	\$51.25	1.025	\$1,822.45
Yr 3	Repair drainage, tread, signage, clear debris	16	\$113.47	\$1,815.48	\$52.53	1.025	\$1,868.01
Yr 4	Repair drainage, tread, signage, clear debris	16	\$116.30	\$1,860.87	\$53.84	1.025	\$1,914.71
Yr 5	Repair drainage, tread, signage, clear debris	16	\$119.21	\$1,907.39	\$55.19	1.025	\$1,962.58
							<b>\$9,345.75</b>

#### **D. Project Schedule (Flexible)**

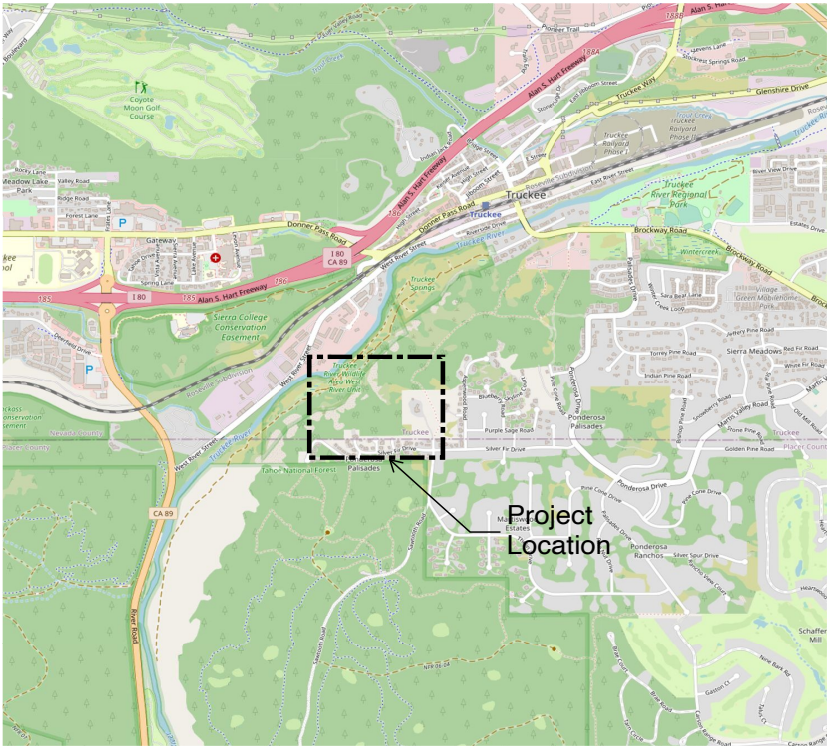
**Outline the schedule of this project from beginning to completion with projected milestone dates.**

<b>Early May 2025</b>	Coordinate with adjacent property owners to determine the level of screening/vegetation that is suitable and include landscaping plan in the plan set. Send letters to the property owners indicating that this coordination has taken place.
<b>May 2025</b>	Necessary pre-construction surveys conducted.
<b>May 2025</b>	Conduct joint survey and stake/string property lines.
<b>May 2025</b>	Obtain formal approval from Truckee Donner Land Trust.
<b>May 2025</b>	Install BMPs and initiate construction, starting at the bottom/northern end of the trail alignment.
<b>May – June 2025</b>	Machine construction will continue from bottom to top, for approximately six weeks.
<b>June – August 2025</b>	“Hand crews” will follow behind the machine construction to buff-out the trail and ensure that BMPs are properly placed.
<b>August 2025</b>	Vegetation screening installed, project complete.





TRAIL CONSTRUCTION PLANS FOR:  
**THELIN DR. TO LEGACY TRAIL**  
**TRUCKEE, CALIFORNIA**  
TRUCKEE TRAILS FOUNDATION



VICINITY MAP

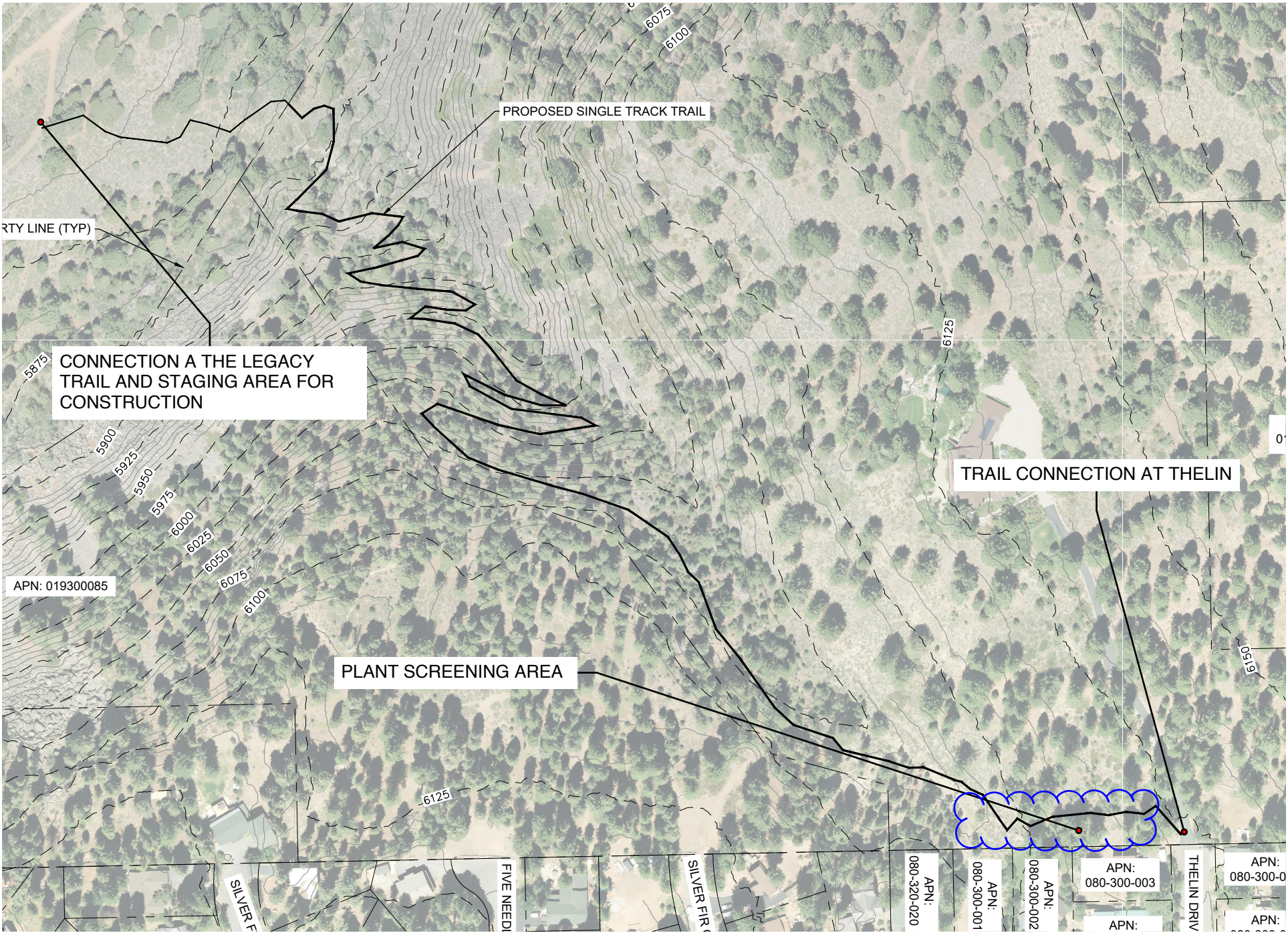
Construction schedule sequence

*Please see the map for clarification.*

This Project is scheduled and approved to begin in 2025. The trail will be a multi-use trail that is approximately 24” wide and .7 miles in length. Construction will be staged at the bottom northern end of the alignment at the Legacy trail. Please see the approved plans for details.

Construction will begin at the staging area and will continue from the bottom to the top at Thelin. Work will be completed by machine and hand crew. The hand crew will follow behind the machine, ensuring trail quality details and BMPs are completed.

In the Fall, after trail construction is completed, the TTF crew will install plant screening where needed to camouflage new access trail.



LOCATION MAP



P.O. Box 1751  
Truckee, CA 96160  
530-575-7682  
Larry@truckeetrails.org  
License #1108018

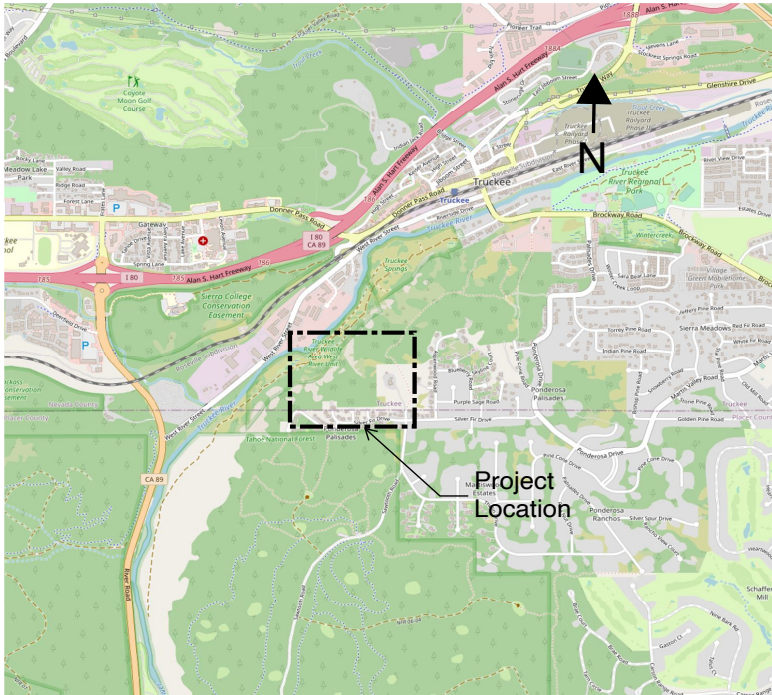
Project and Location  
**THELIN TO LEGACY PROJECT**

Drawing  
**CONSTRUCTION SCHEDULE SEQUENCE**  
Section

Revision  
Scale  
Drawing no.  
Sheet of

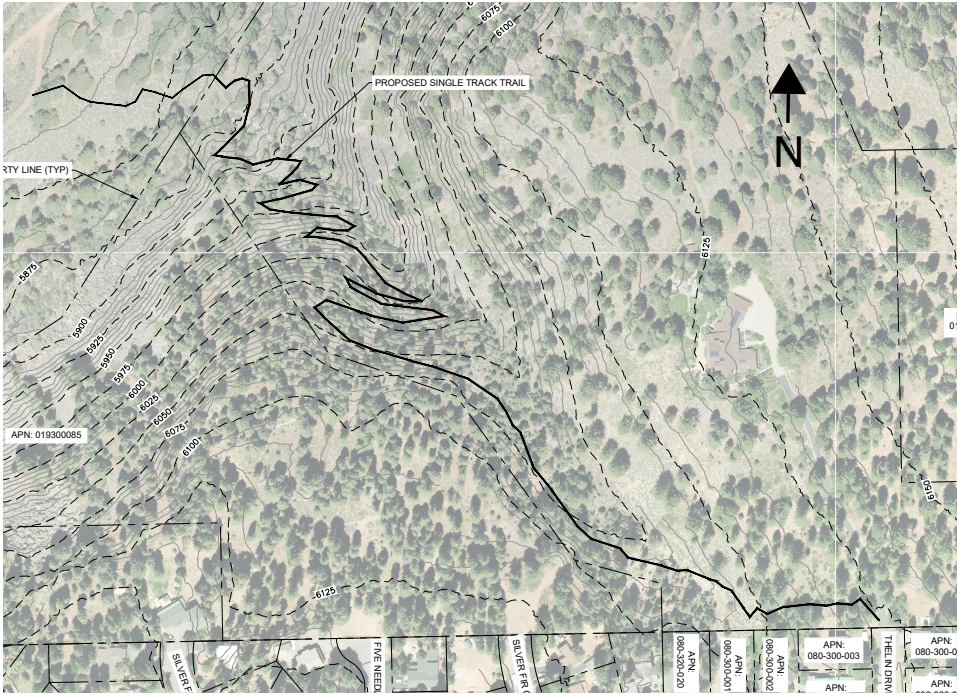


TRAIL CONSTRUCTION PLANS FOR:  
THELIN DR. TO LEGACY TRAIL  
TRUCKEE, CALIFORNIA  
TRUCKEE TRAILS FOUNDATION



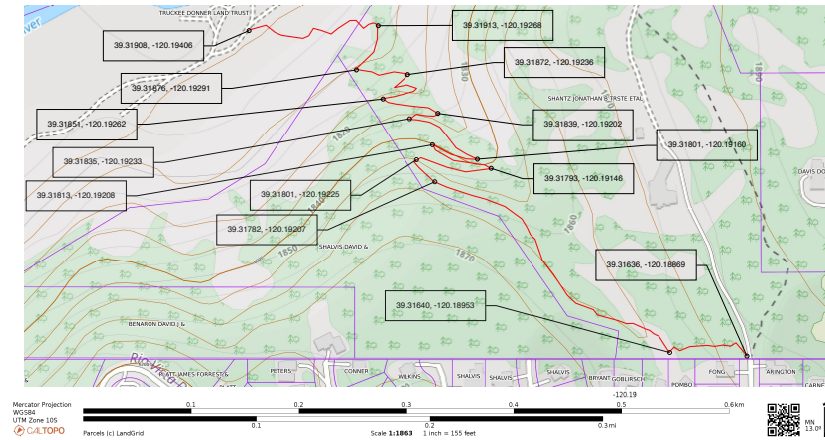
VICINITY MAP

NOT TO SCALE

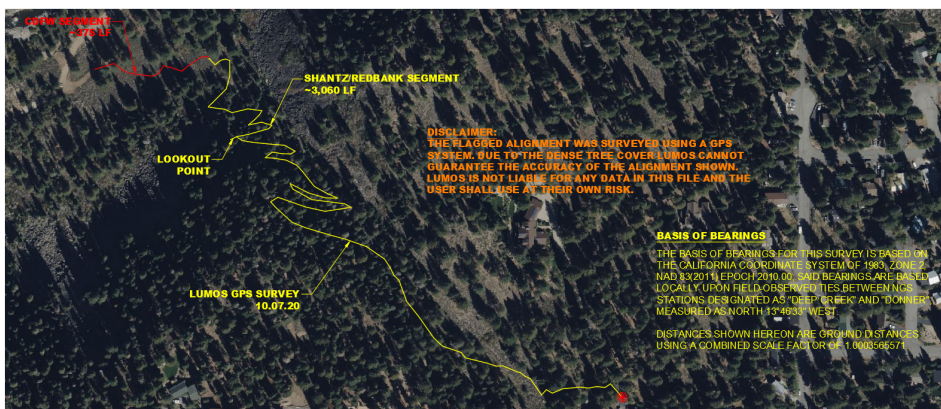


LOCATION MAP

NOT TO SCALE



MAP BEARING/COORDINATES



LUMAS GPS SURVEY

SHEET NUMBER	DRAWING NUMBER	DESCRIPTION
1	CS-1	COVRESHEET
2	ER-1 revised 7.23.24, 8.22.24	EASEMENT AND RIGHT OF ENTRY
3	N-1	GENERAL NOTES
4	KP-1 revised 7.23.24, 8.22.24	KEY PLAN
5	W-1 revised 7.23.24	WORKLIST
6	D-1	DETAILS
7	D-2	DETAILS
8	D-3	DETAILS
9	D-4	DETAILS
10	D-5	DETAILS
11	LG-1	LANDSCAPING AND GARBAGE RECEPTACLE
12	EP-1	EROSION CONTROL
13	EP2	EROSION CONTROL

SHEET INDEX

CONTRACTOR/PROJECT SPONSOR:

TRUCKEE TRAILS FOUNDATION  
P.O. BOX 1751  
TRUCKEE, CA 96160  
LICENSE #1108018  
CONTACT: ALLISON PEDLEY  
PHONE: (530) 587-8214

LAND MANAGER:

Town of Truckee  
10183 Truckee Airport Road  
Truckee, CA 96161  
Attention: Town Manager  
Truckee@TownofTruckee.Com

LAND OWNER:

Jonathan Shantz  
13561 Hill Way  
Los Altos, CA 94022  
jon.shantz@gmail.Com

PLAN DESIGN:

TRUCKEE TRAILS FOUNDATION  
P.O. BOX 1751  
TRUCKEE, CA 96160  
LICENSE #1108018  
CONTACT: LARRY LEHMAN  
PHONE: (530) 575-7682

CONTACTS



P.O. Box 1751  
Truckee, CA 96160  
530-575-7682  
Larry@truckeetrails.org  
License #1108018

Project and Location

Thelin to Legacy Trail Connection  
Truckee, CA

Drawing

COVER SHEET

Section

Revision

SHEET 2,4,5 REVISED  
7.23.24. SHEET 2,4  
REVISED 8.22.24

Drawing no.

CS-1

Scale

N/A

Sheet

of

1

13







PROJECT DESCRIPTION

- 1. AS SHOWN ON THE DRAWINGS, THE PROJECT WILL CREATE APPROXIMATELY 3535 LINEAR FEET OF NEW MULTI-USE, SINGLE TRACK TRAIL.
- 2. PROJECT INCLUDES SIGNAGE AND (1) BEARPROOF GARBAGE RECEPTICLE.
- 3. TRAIL CONSTRUCTION SHALL FOLLOW THE DETAILS INCLUDED IN THESE CONSTRUCTION DOCUMENTS; AND USFS, CALIFORNIA STATE PARKS, ITERNATIONAL MOUNTAIN BICYCLING ASSOCIATION TRAIL BUILDING STANDARDS AND GUIDELINES.
- 4. LOW IMPACT TECHNIQUES SHALL BE USED.
- 5. **TEMPORARY BMPs WILL BE UTILIZED FOR EROSION CONTROL INCLUDING SILT FENCING AND/OR STRAW WATTLES. SEE SHEET 12 FOR MORE INFORMATION.**

TRAIL MAINTENANCE:

- 1. THE PROPOSED TRAIL WILL BE MAINTAINED BY TRUCKEE TRAIL FOUNDATION.
- 2. TRAIL MAINTENANCE WILL OCCUR DURING SUMMER AND FALL AS NECESSARY TO RESPOND TO SPECIFIC MAINTENANCE NEEDED.

EARTHWORK SUMMARY

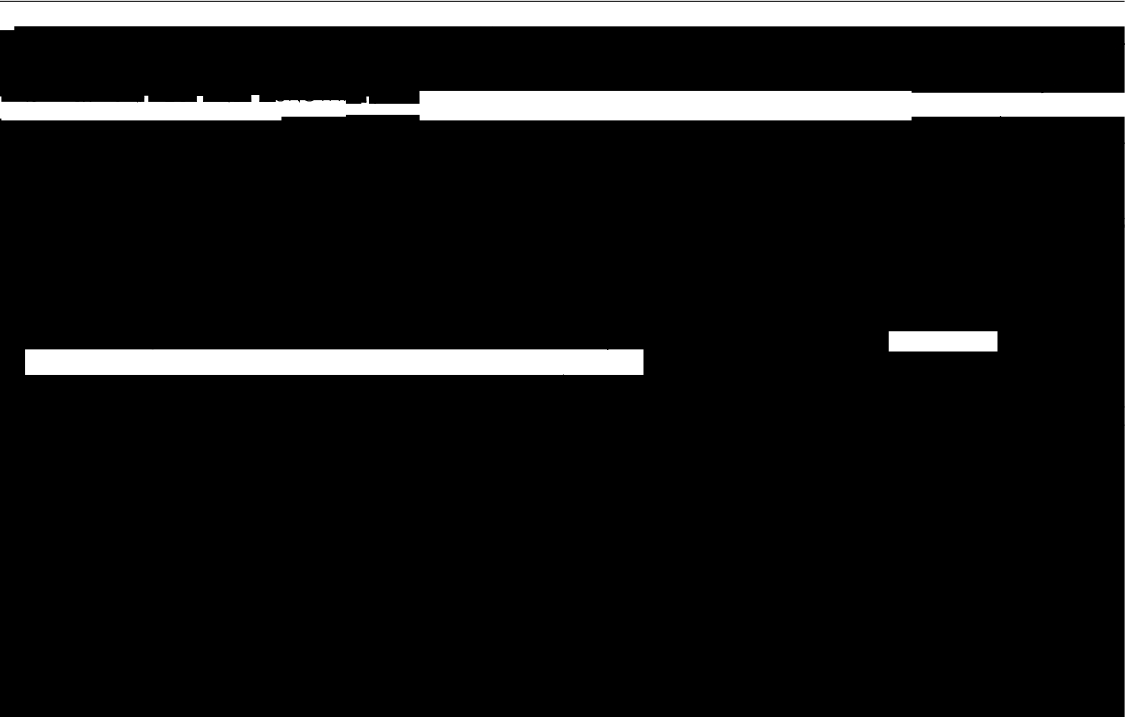
- 1. CUT AND FILL IS EXPECTED TO BE ASSOCIATED PRIMARILY WITH THE BENCH CUT.
- 2. EXCESS MATERIAL FROM TRAIL MODIFICATIONS IS EXPECTED TO BE SIDE CAST IN NATURALISTIC FORMATIONS.
- 3. TOTAL CUT IS EXPECTED TO BE APPROXIMATELY   138 CUBIC YARDS. **BALANCED CUT AND FILL WILL BE UTILIZED FOR THIS PROJECT.**
- 4. STATIONS ARE APPROXIMATE AND WILL BE FIELD ADJUSTED.
- 5. REFER TO THE WORKLIST FOR DETAILS OF CONSTRUCTION BETWEEN SWITCHBACK TURNS.
- 6. GRADE REVERSALS WILL BE FIELD FIT AS NEEDED EVERY 0-500 FEET.
- 7. **ENVIRONMENTALLY SENSITIVE AREAS WILL BE DEMARKED USING CONSTRUCTION FENCING. THESE AREAS INCLUDE PROPERTY LINES CLOSE TO CONSTRUCTION AND ANY STOCKPILES.**

SCHEDULING AND TIMING

- 1. CONSTRUCTION IS PLANNED FOR JUNE 1 THROUGH SEPTEMBER 30 AND IS ESTIMATED TO BE COMPLETED OVER A PERIOD OF APPROXIMATELY 50 WORKDAYS.
- 2. GRADING AND CONSTRUCTION WORK HOURS SHALL BETWEEN 7:00 AM AND 7:00 PM, MONDAY THROUGH SATURDAY.
- 3. NO ROAD CLOSURES OR DETOURS WILL BE REQUIRED TO CONDUCT THE PROPOSED TRAIL PROJECT.
- 4. WHENEVER POSSIBLE, WORK WILL BE CONDUCTED IN DRY CONDITIONS, WITH NO SURFACE WATER IN ANY DRAINAGES.

Summary of Quantities

<u>Description</u>	<u>unit of measure</u>	<u>Total</u>
1 New trail construction	lineal feet	3535
2 Clear and grub	lineal feet	3535
3 Construct drain dips	each	12
4 Construct switchback turns	each	11
5 Cut quantity (approximate)	cubic yard	138
6 Fill quantity (approximate)	cubic yard	138
7 Armored rock seasonal creek crossings	each	3
8 Area of disturbance	square feet	28280



GENERAL NOTES



P.O. Box 1751  
Truckee, CA 96160  
530-575-7682  
Larry@truckeetrails.org  
License #1108018

Project and Location

Thelin to Legacy Trail Connection  
Truckee, CA

Drawing

GENERAL NOTES, SUMMARY OF QUNATITIES

Section

Revision

Drawing no.

N-1

Scale

N/A

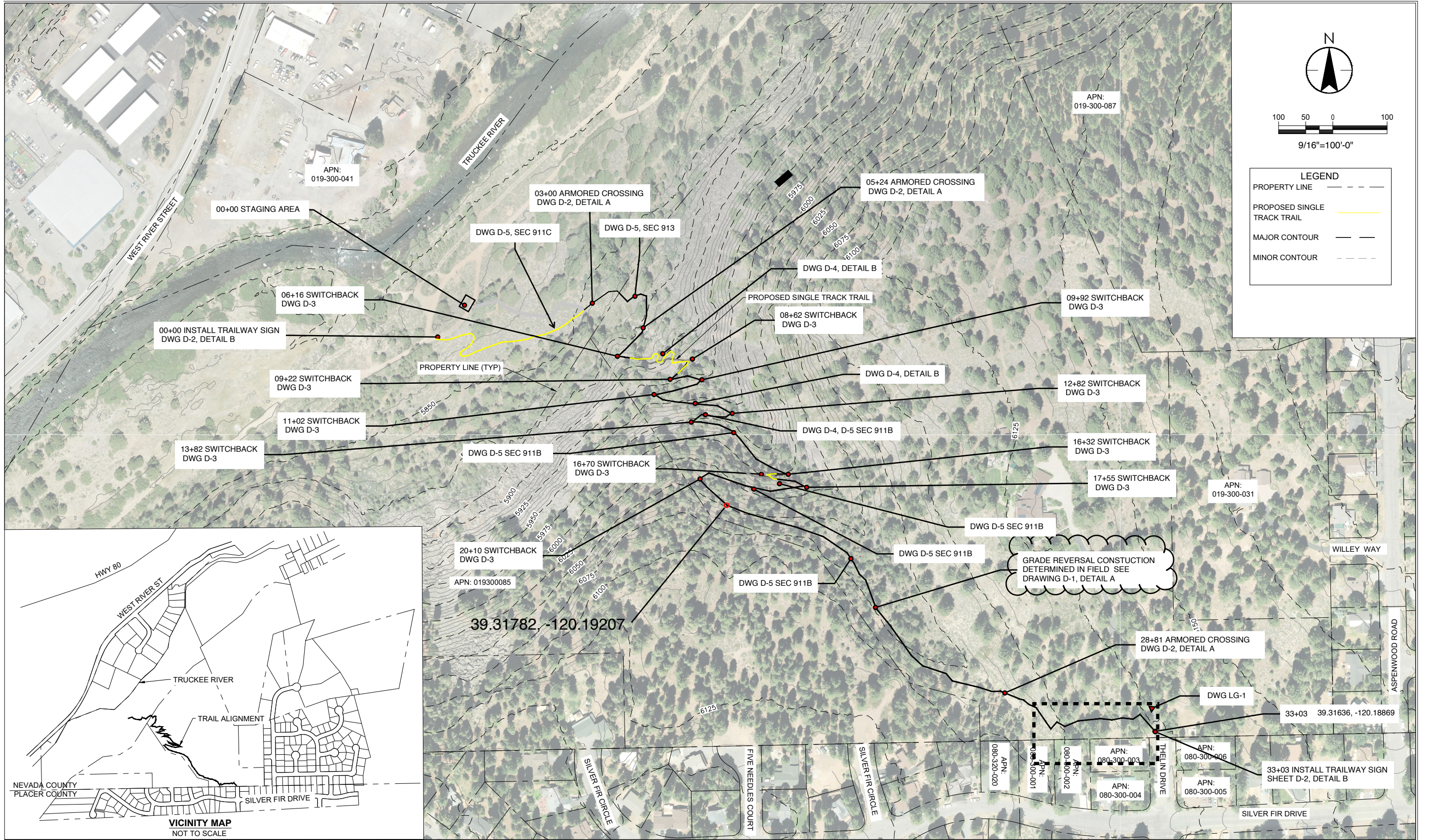
Sheet

of

3

13





P.O. Box 1751  
Truckee, CA 96160  
530-575-7682  
Larry@trucketrails.org  
License #1108018

Project and Location  
Thelin to Legacy Trail Connection  
Truckee, CA

Drawing

KEY PLAN, STAGING AND ACCESS

Section

Revision

7-23-24, 8-22-24

Scale

N/A

Drawing no.

KP-1

Sheet

4

of

13



Revised 7.23.24

WORKLIST

<u>Station</u>		<u>Task</u>	<u>Plan reference</u>
<u>start</u>	<u>end</u>		
00+00	00+00	STAGING AREA	DWG KP-1
00+00	00+00	INSTALL TRAILWAY SIGNAGE	DWG KP-1, D-2 DETAIL B
00+00	03+30	CONSTRUCT TRAIL	DWG KP-1, D-5 SECTION 911-C
03+00	03+15	ARMORED ROCK CROSSING	DWG KP-1, D-2 DETAIL A
03+15	05+24	CONSTRUCT TRAIL	DWG KP-1, D-5 SECTION 913
05+24		ARMORED ROCK CROSSING	DWG KP-1, D-2 DETAIL A
05+24	06+16	CONSTRUCT TRAIL	DWG KP-1, D-4 DETAIL B
06+16		CONSTRUCT LANDING SWITCHBACK	DWG KP-1, D-3
06+16	07+74	CONSTRUCT TRAIL	DWG KP-1, D-4 DETAIL B
07+74		CONSTRUCT LANDING SWITCHBACK	DWG KP-1, D-3
07+74	08+34	CONSTRUCT TRAIL	DWG KP-1, D-4 DETAIL B
08+34		CONSTRUCT LANDING SWITCHBACK	DWG KP-1, D-3
08+34	09+04	CONSTRUCT TRAIL	DWG KP-1, D-4 DETAIL B
09+04		CONSTRUCT LANDING SWITCHBACK	DWG KP-1, D-3
09+04	10+14	CONSTRUCT TRAIL	DWG KP-1, D-4 DETAIL B
10+14		CONSTRUCT LANDING SWITCHBACK	DWG KP-1, D-3
10+14	11+94	CONSTRUCT TRAIL	DWG KP-1, D-4 DETAIL B
11+94		CONSTRUCT LANDING SWITCHBACK	DWG KP-1, D-3
11+94	12+94	CONSTRUCT TRAIL	DWG KP-1, D-4, D-5 SECTION 911-B
12+94		CONSTRUCT LANDING SWITCHBACK	DWG KP-1, D-3
12+94	15+44	CONSTRUCT TRAIL	DWG KP-1, D-5 SECTION 911-B
15+44		CONSTRUCT LANDING SWITCHBACK	DWG KP-1, D-3
15+44	16+93	CONSTRUCT TRAIL	DWG KP-1, D-5 SECTION 911-B
16+93		CONSTRUCT LANDING SWITCHBACK	DWG KP-1, D-3
16+93	18+89	CONSTRUCT TRAIL	DWG KP-1, D-5 SECTION 911-B
18+89		CONSTRUCT LANDING SWITCHBACK	DWG KP-1, D-3
18+89	21+44	CONSTRUCT TRAIL	DWG KP-1, D-5 SECTION 911-B
21+44		CONSTRUCT LANDING SWITCHBACK	DWG KP-1, D-3
21+44	30+15	CONSTRUCT TRAIL	DWG KP-1, D-5 SECTION 911-B
30+15	30+45	ARMORED ROCK CROSSING	DWG KP-1, D-2 DETAIL A
30+45	35+35	CONSTRUCT TRAIL	DWG KP-1, D-5 SECTION 911-A,B,C
31+66	35+25	LANDSCAPING	DWG LG-1
35+35	35+35	INSTALL GARBAGE RECEPTACLE	DWG LG-1
35+35	35+35	INSTALL TRAILWAY SIGNAGE	DWG KP-1, D-2 DETAIL B

WORKLIST

<u>Station</u>		<u>Task</u>	<u>Plan reference</u>
<u>start</u>	<u>end</u>		
00+00	00+00	STAGING AREA	DWG KP-1
00+00	00+00	INSTALL TRAILWAY SIGNAGE	DWG KP-1, D-2 DETAIL B
00+00	03+30	CONSTRUCT TRAIL	DWG KP-1, D-5 SECTION 911-C
03+00	03+15	ARMORED ROCK CROSSING	DWG KP-1, D-2 DETAIL A
03+15	05+24	CONSTRUCT TRAIL	DWG KP-1, D-5 SECTION 913
05+24		ARMORED ROCK CROSSING	DWG KP-1, D-2 DETAIL A
05+24	06+16	CONSTRUCT TRAIL	DWG KP-1, D-4 DETAIL B
06+16		CONSTRUCT LANDING SWITCHBACK	DWG KP-1, D-3
06+16	07+74	CONSTRUCT TRAIL	DWG KP-1, D-4 DETAIL B
08+62		CONSTRUCT LANDING SWITCHBACK	DWG KP-1, D-3
08+62	09+22	CONSTRUCT TRAIL	DWG KP-1, D-4 DETAIL B
09+22		CONSTRUCT LANDING SWITCHBACK	DWG KP-1, D-3
09+22	09+92	CONSTRUCT TRAIL	DWG KP-1, D-4 DETAIL B
09+92		CONSTRUCT LANDING SWITCHBACK	DWG KP-1, D-3
09+92	11+02	CONSTRUCT TRAIL	DWG KP-1, D-4 DETAIL B
11+02		CONSTRUCT LANDING SWITCHBACK	DWG KP-1, D-3
11+02	12+82	CONSTRUCT TRAIL	DWG KP-1, D-4 DETAIL B
12+82		CONSTRUCT LANDING SWITCHBACK	DWG KP-1, D-3
12+82	13+82	CONSTRUCT TRAIL	DWG KP-1, D-4, D-5 SECTION 911-B
13+82		CONSTRUCT LANDING SWITCHBACK	DWG KP-1, D-3
13+82	16+32	CONSTRUCT TRAIL	DWG KP-1, D-5 SECTION 911-B
16+32		CONSTRUCT LANDING SWITCHBACK	DWG KP-1, D-3
16+32	16+70	CONSTRUCT TRAIL	DWG KP-1, D-5 SECTION 911-B
16+70		CONSTRUCT LANDING SWITCHBACK	DWG KP-1, D-3
16+70	17+55	CONSTRUCT TRAIL	DWG KP-1, D-5 SECTION 911-B
17+55		CONSTRUCT LANDING SWITCHBACK	DWG KP-1, D-3
17+55	20+10	CONSTRUCT TRAIL	DWG KP-1, D-5 SECTION 911-B
20+10		CONSTRUCT LANDING SWITCHBACK	DWG KP-1, D-3
20+10	28+81	CONSTRUCT TRAIL	DWG KP-1, D-5 SECTION 911-B
28+81		ARMORED ROCK CROSSING	DWG KP-1, D-2 DETAIL A
28+81	33+03	CONSTRUCT TRAIL	DWG KP-1, D-5 SECTION 911-A,B,C
29+76	33+03	LANDSCAPING	DWG LG-1
33+03		INSTALL GARBAGE RECEPTACLE	DWG LG-1
33+03		INSTALL TRAILWAY SIGNAGE	DWG KP-1, D-2 DETAIL B



P.O. Box 1751  
Truckee, CA 96160  
530-575-7682  
Larry@truckeetrails.org  
License #1108018

Project and Location

Thelin to Legacy Trail Connection  
Truckee, CA

Drawing

WORKLIST

Section

Revision

7-23-24

Scale

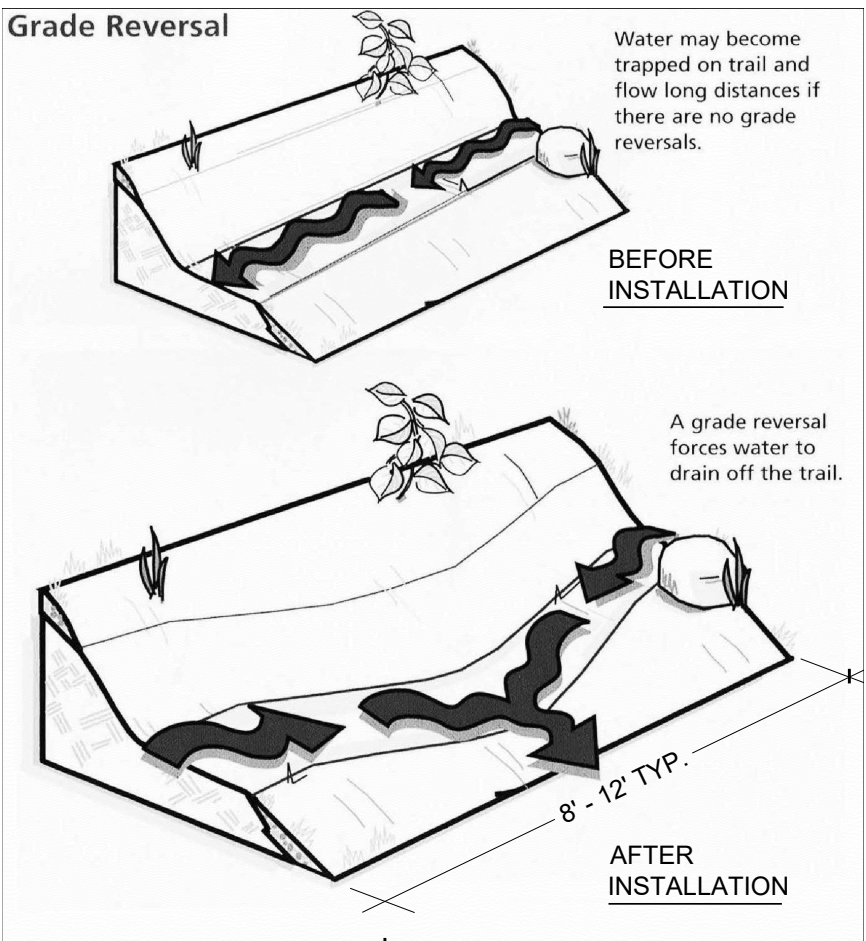
N/A

Drawing no.

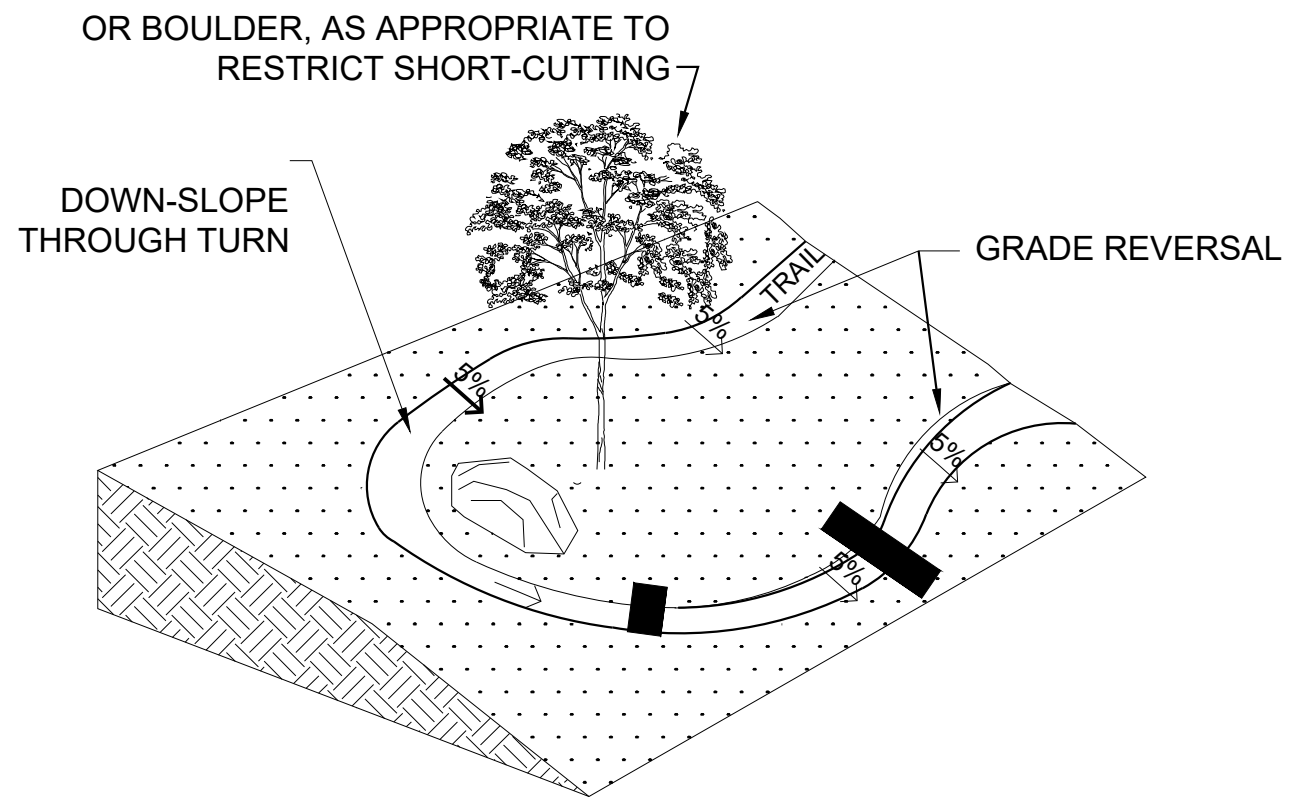
W-1

Sheet of

5 13




**A** GRADE REVERSAL



SLOPES GREATER THAN 7%.

SWEET SINGLETRACK". INTERNATIONAL MOUNTAIN BIKING ASSOCIATION. 2004.

**B** CLIMBING TURN

 <p>P.O. Box 1751 Truckee, CA 96160 530-575-7682 Larry@truckeetrails.org License #1108018</p>	<p>Project and Location</p> <p>Thelin to Legacy Trail Connection Truckee, CA</p>	Drawing	Revision	Drawing no.	
		Section	Scale	Sheet of	
		DETAILS	N/A	6	13

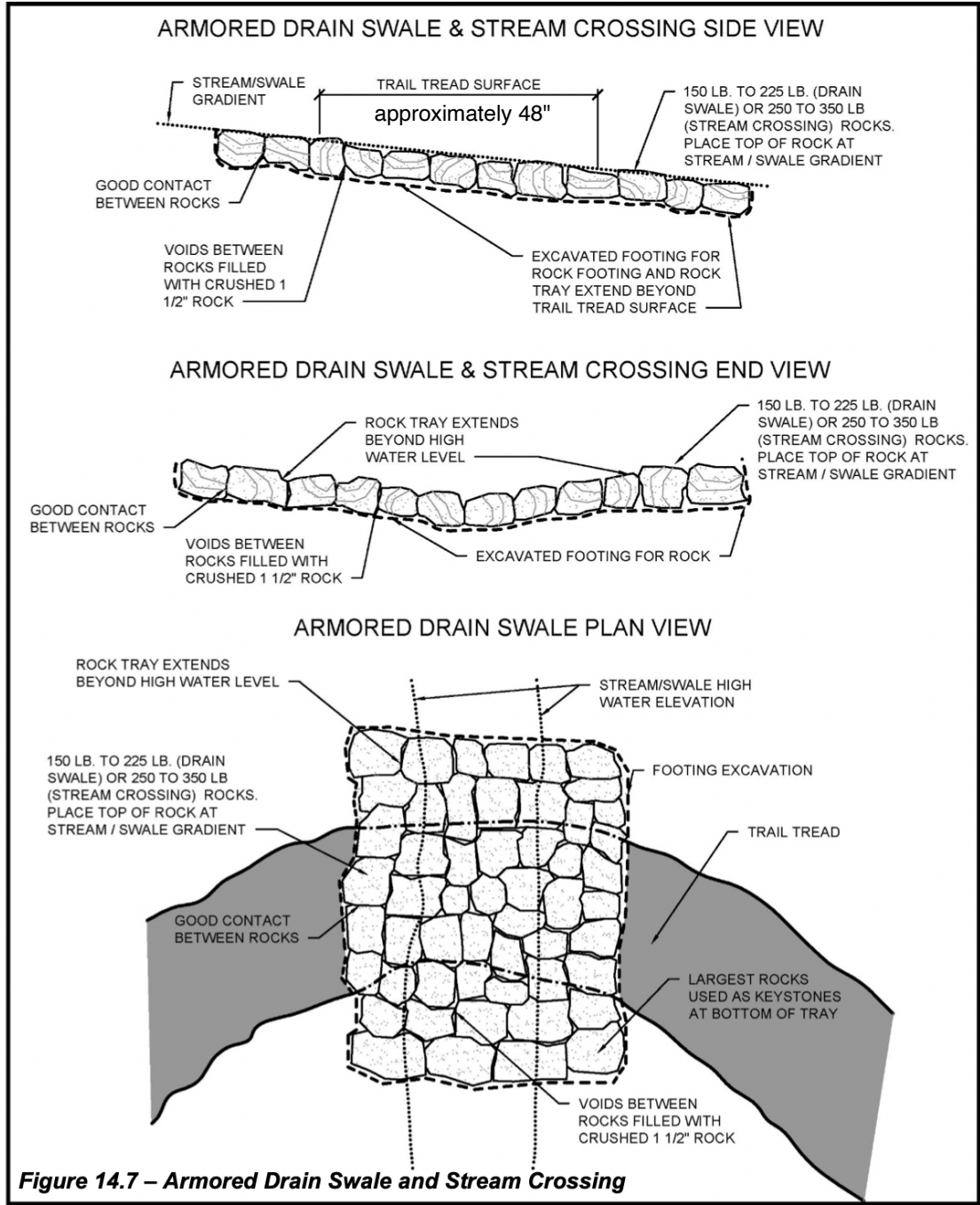
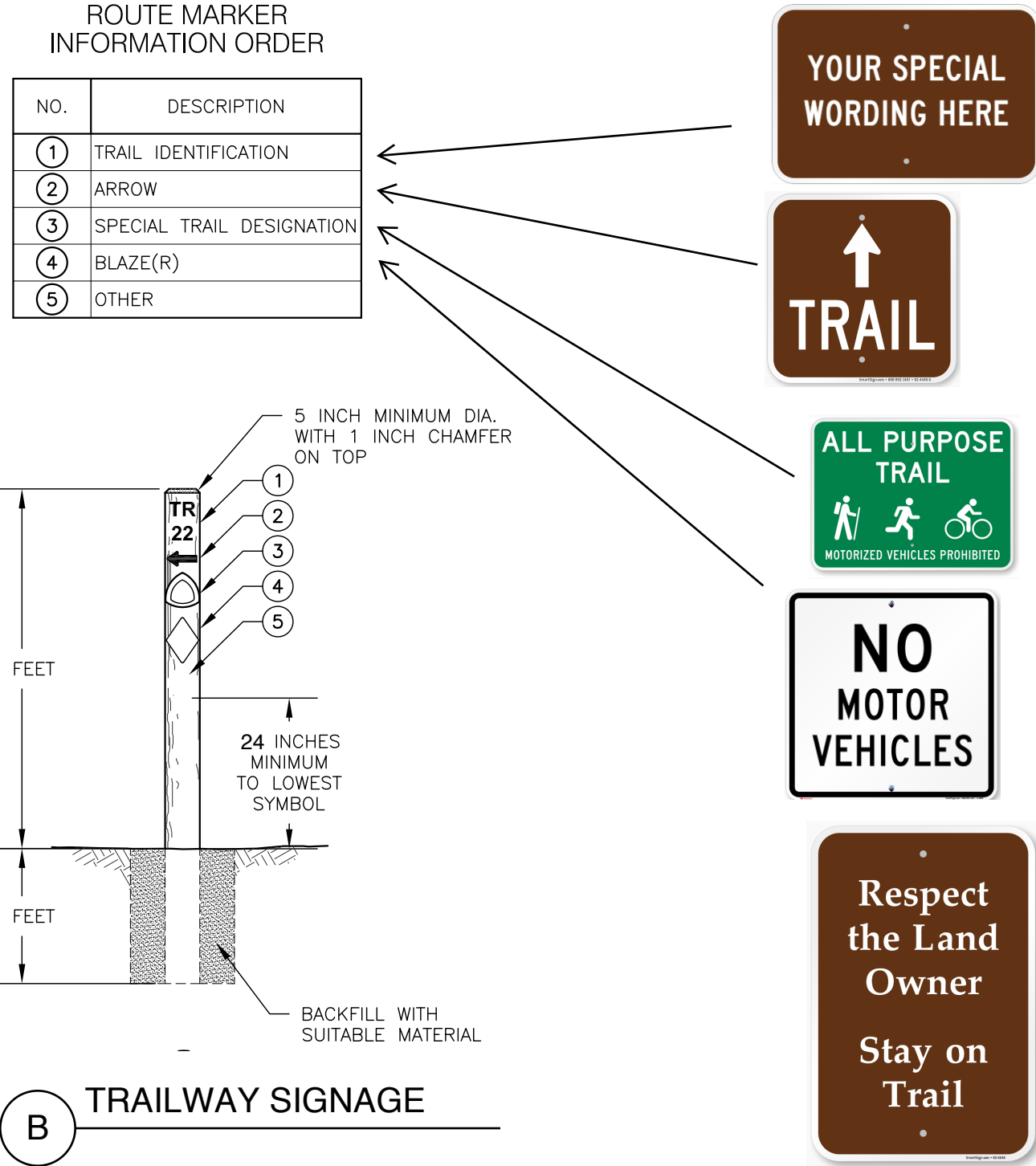


Figure 14.7 – Armored Drain Swale and Stream Crossing

A **ARMORED ROCK SEASONAL CREEK CROSSING**



CAMPGROUND SIGNS.COM



P.O. Box 1751  
Truckee, CA 96160  
530-575-7682  
Larry@truckeetrails.org  
License #1108018

Project and Location  
Thelin to Legacy Trail Connection  
Truckee, CA

Drawing  
DETAILS

Section

Revision

Scale

Drawing no.

D-2

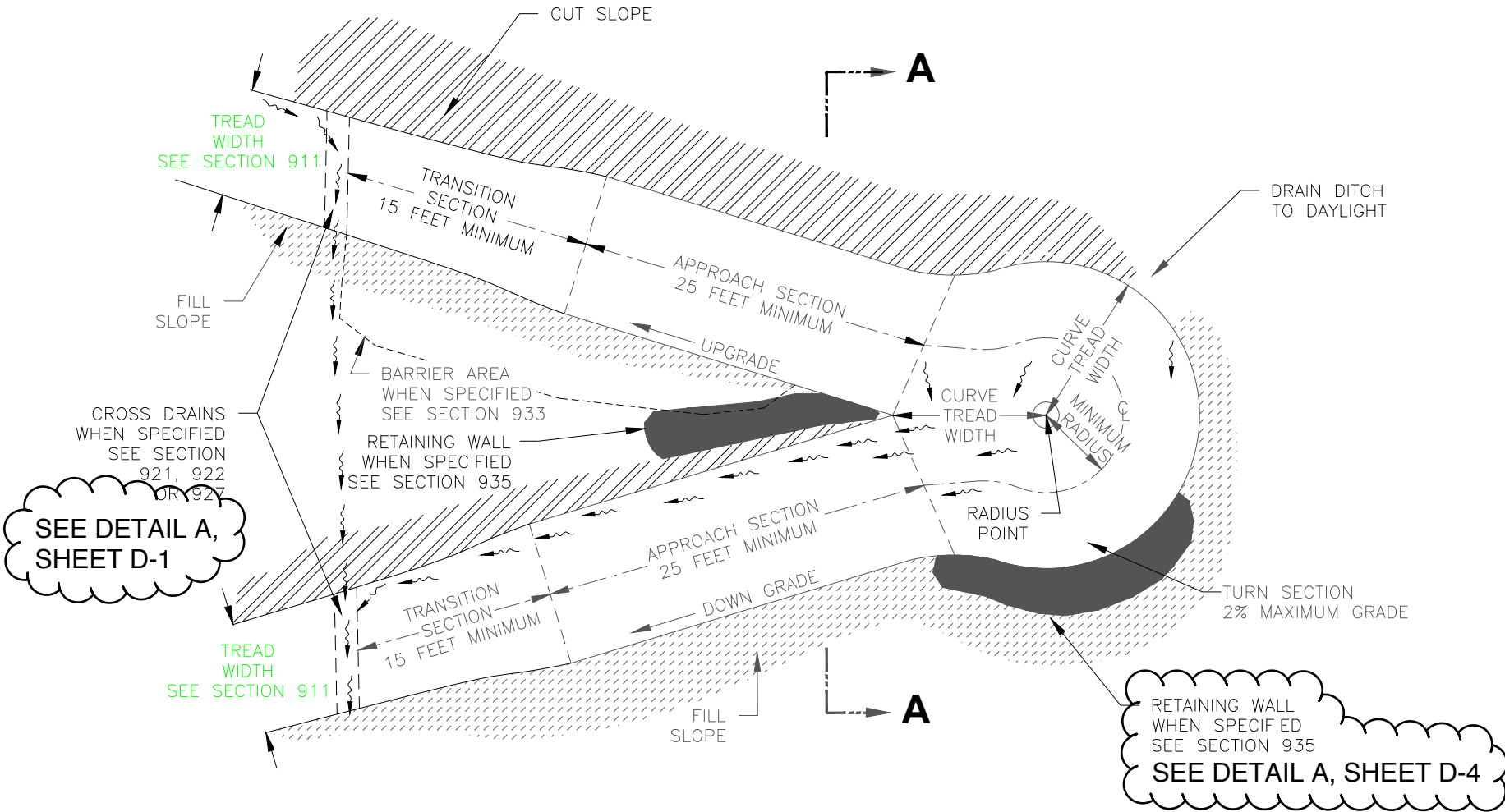
Sheet of  
7 13



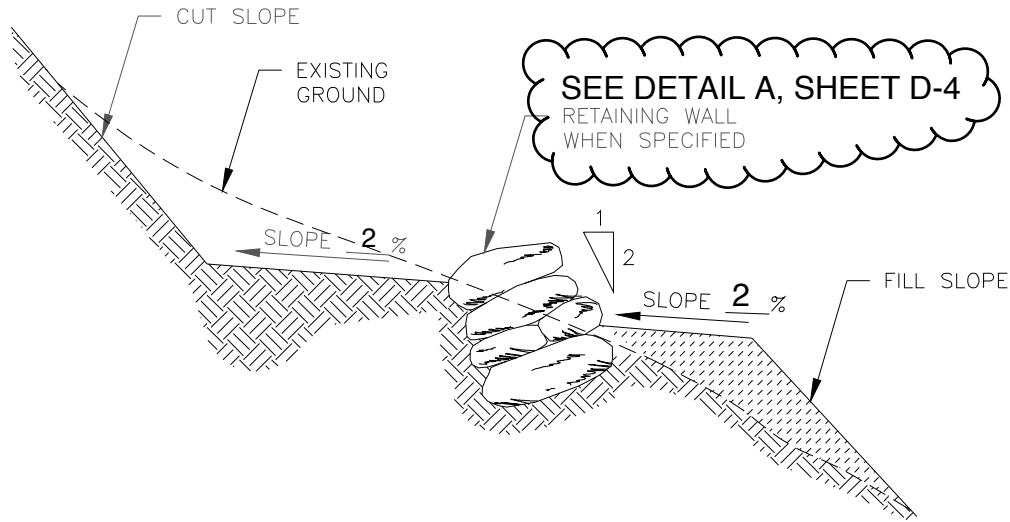
TYPE 2 CIRCULAR LANDING SWITCHBACK SECTIONS

TYPICAL ID	MINIMUM RADIUS	CURVE TREAD WIDTH	BARRIER TYPE	RETAINING WALL TYPE	CROSS DRAINS	COMMENTS
SW2-1	12"	24"		ROCK		

N/A WHEN NOT SPECIFIED



NOTE:  
RADIUS POINT AND CENTERLINE OF SWITCHBACK AS STAKED ON THE GROUND.

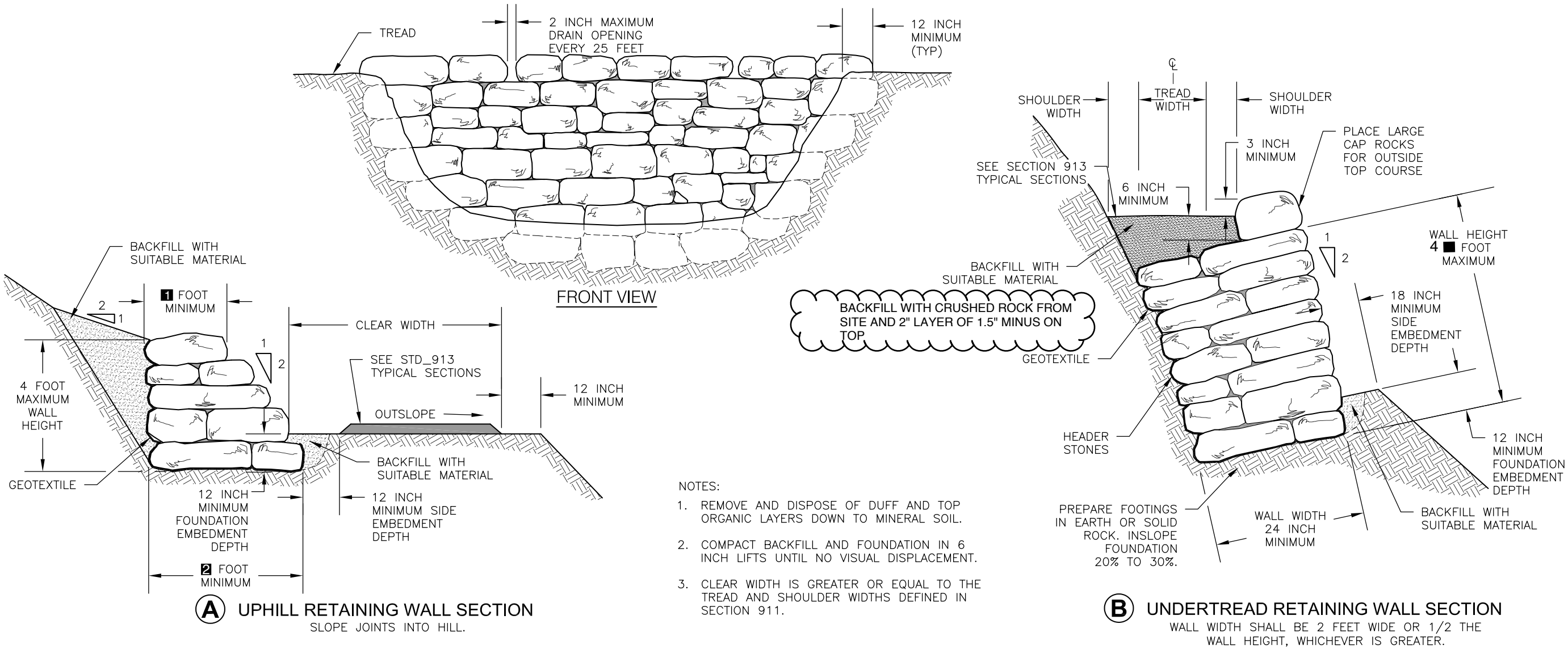


SECTION

STACKED ROCK RETAINING WALL

TYPICAL ID	GEOTEXTILE TYPE	EMBEDMENT DEPTH		HEIGHT	COMMENTS
		FOUNDATION	SIDE		
RRW-1	N/A	N/A	N/A	N/A	SEE DETAILS ON THIS SHEET

N/A WHEN NOT APPLICABLE



P.O. Box 1751  
Truckee, CA 96160  
530-575-7682  
Larry@truckeetrails.org  
License #1108018

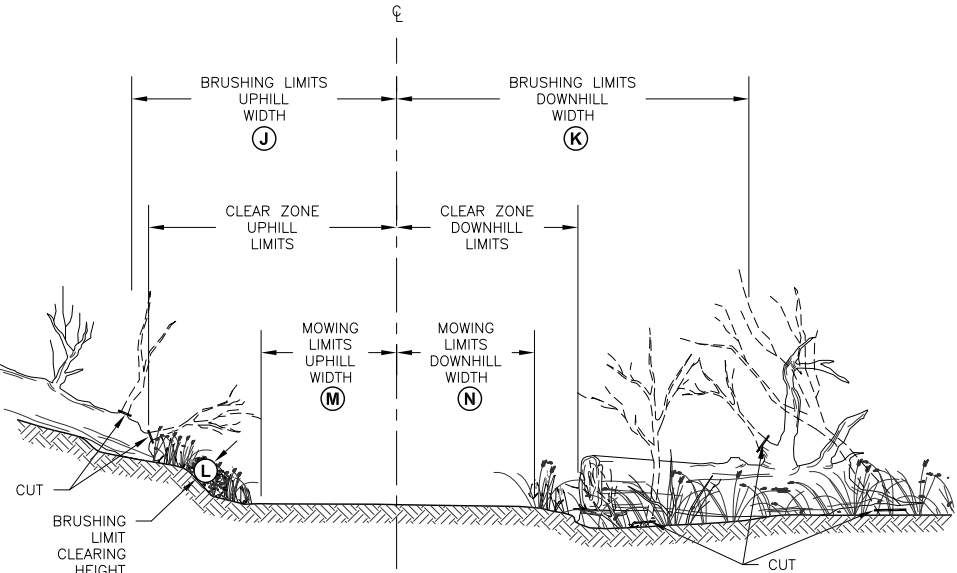
Project and Location  
**Thelin to Legacy Trail Connection**  
Truckee, CA

Drawing  
**DETAILS**  
Section  
**SECTION 935**

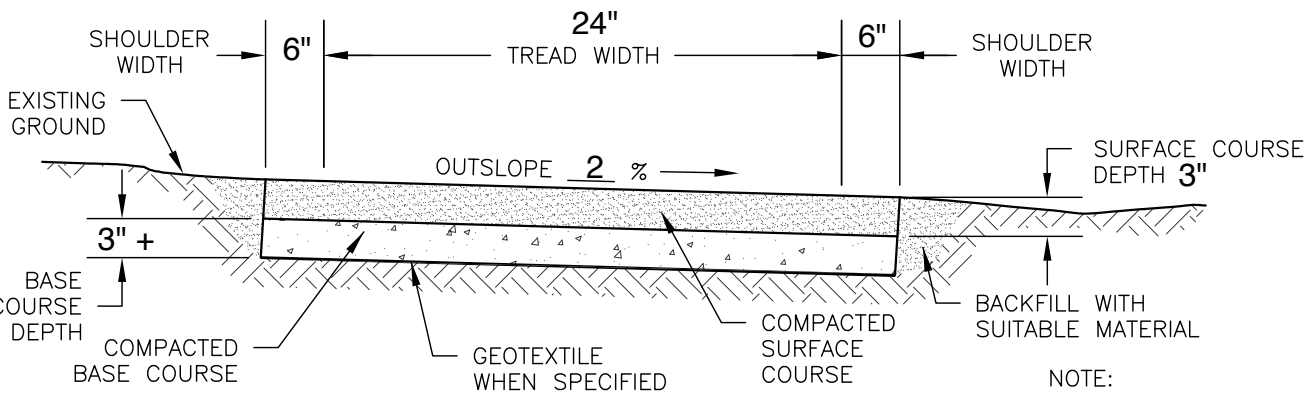
Revision	Drawing no.
	<b>D-4</b>
Scale	Sheet of
	<b>9</b>   <b>13</b>

CLEARING LIMITS - BRUSHING

TYPICAL ID	CLEARING METHOD	BRUSHING LIMITS			MOWING LIMITS		DISPOSAL METHOD	COMMENTS
		UPHILL WIDTH (J)	DOWNHILL WIDTH (K)	CLEARING HEIGHT (L)	UPHILL WIDTH (M)	DOWNHILL WIDTH (N)		
CLB-1		4'	4'		N/A	N/A		SEE NOTES



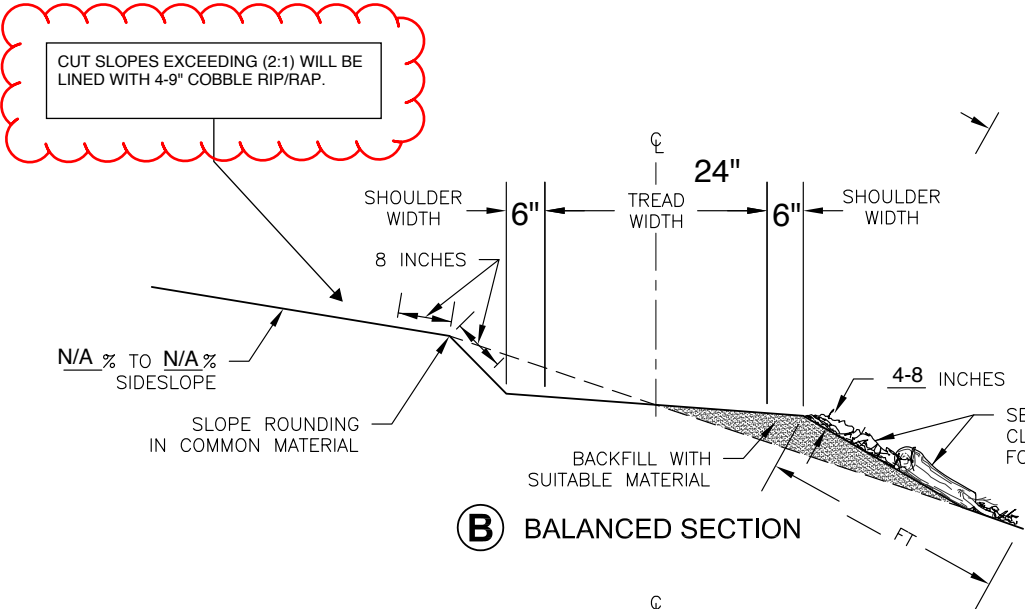
SECTION 912



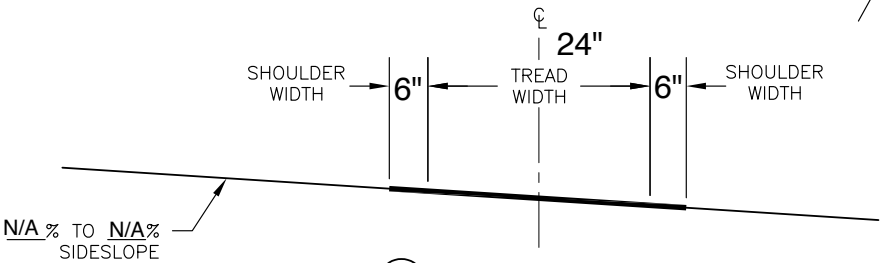
SECTION 913

REFER TO DETAIL B. ALL TRAIL CONSTRUCTION WILL UTILIZE A BALANCED CUT WHERE CUT IS NECESSARY.

A FULL BENCH SECTION



B BALANCED SECTION



C FLAT SECTION

SECTION 911



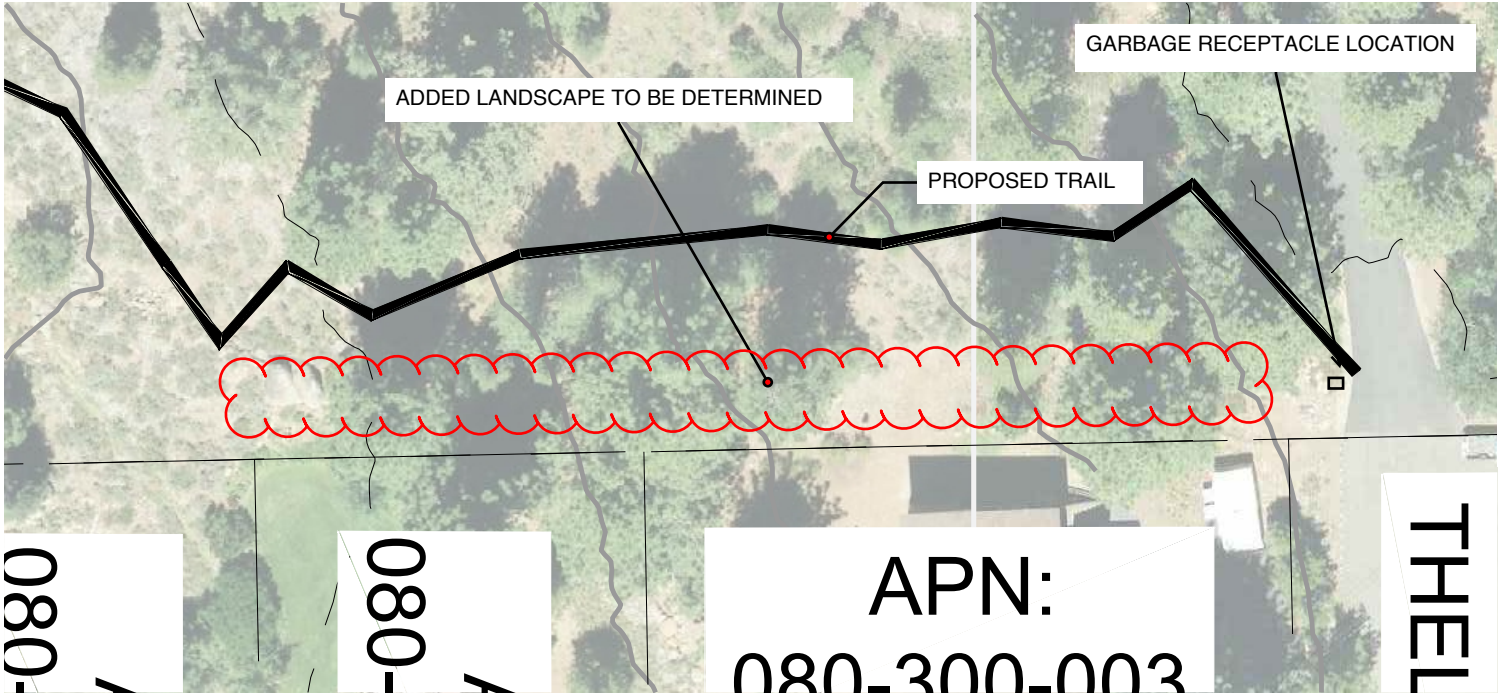
P.O. Box 1751  
Truckee, CA 96160  
530-575-7682  
Larry@truckeetrails.org  
License #1108018

Project and Location  
  
Thelin to Legacy Trail Connection  
Truckee, CA

Drawing  
  
DETAILS  
  
Section  
  
SECTION 911, 912, 913

Revision  
  
Scale  
  
N/A

Drawing no.  
  
D-5  
  
Sheet of  
10 13



GARBAGE RECEPTACLE AND LANDSCAPING LOCATION

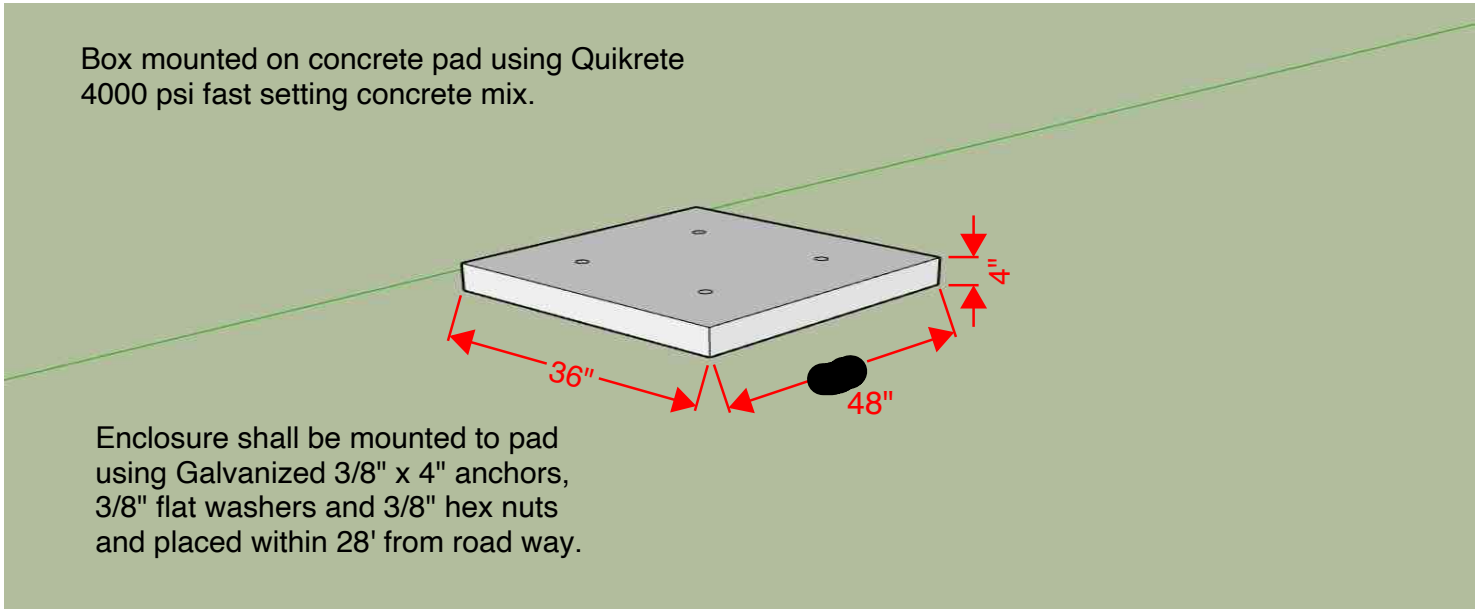
LANDSCAPE AND GARBAGE  
RECEPTACLE TO BE  
DETERMINED

SPECIFICATIONS

- Product Name BearSaver - CE Series Double Trash/Recycling Enclosure - CE240-CH
- Manufacturer Name BearSaver
- Item # CE240-CH
- Weight 242 lbs
- Assembled Width 26 in
- Assembled Height 53 in
- Assembled Length 36 in
- Shipped From Ontario, California 91761
- Warranty 1 year



DOUBLE TRASH ENCLOSURE



DOUBLE TRASH ENCLOSURE FOUNDATION



P.O. Box 1751  
Truckee, CA 96160  
530-575-7682  
Larry@truckeetrails.org  
License #1108018

Project and Location  
Thelin to Legacy Trail Connection  
Truckee, CA

Drawing  
LANDSCAPING AND GARBAGE RECEPTACLE

Section

Revision

Scale

N/A

Drawing no.

LG-1

Sheet of

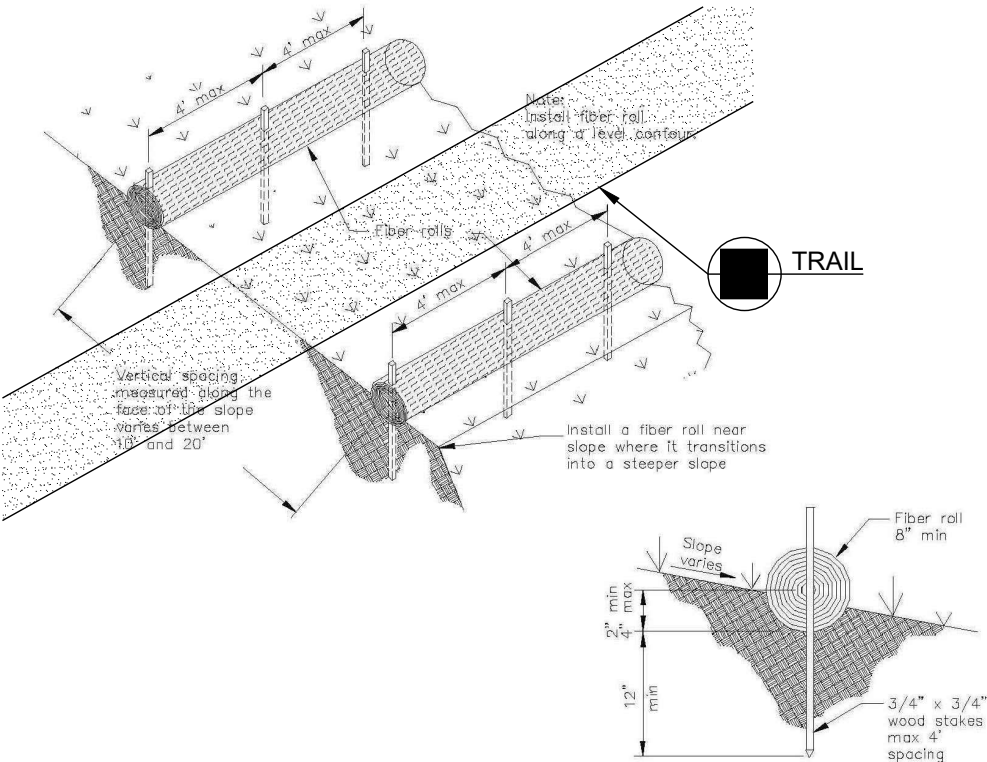
11 of 13



GRADING, STABILIZATION, AND BEST MANAGEMENT PRACTICES

1. IT IS EXPECTED THAT THE TOTAL DISTURBANCE OF THE PROPOSED PROJECT WILL BE APPROXIMATELY 29000 SQUARE FEET. SCHEDULING WILL BE USE AS AN EROSION CONTROL TECHNIQUE TO ENSURE THAT EROSION POTENTIAL IS LIMITED. IN GENERAL, CONSTRUCTION WILL OCCUR BETWEEN JUNE 1 AND SEPTEMBER 30.
2. IN ORDER TO DEMONSTRATE FINAL SITE STABILIZATION, THE PROJECT WILL UTILIZE A BALANCED BENCH WHERE POSSIBLE. REFER TO DETAIL 911-B SHEET D-5. SILT OR CONSTRUCTION FENCING WILL BE USED WHERE NEEDED AND ACCORDANCE WITH DETAIL A, THIS SHEET.
3. BALANCED BENCH CONSTRUCTION WILL CUT TRAIL INTO SIDE-SLOPED AREAS AND ENSURE OUTSLOPE OF 3% OR LESS TO ALLOW WATER TO SHEET FLOW IN NON-EROSIVE MANNER. WHERE FEASIBLE, THE BACKCUT OF MATERIAL WILL BE EXCAVATED TO ENSURE SLOPES DO NOT EXCEED THE ANGLE OF REPOSE OF CUT MATERIAL. IF A GREATER BACKSLOPE IS REQUIRED, MATERIALS INCLUDING ROCK FROM ON SITE WILL BE USED TO CREATE RETAINING WALLS.
4. GRADING ASSOCIATED WITH THE PROJECT WILL REQUIRE EXCAVATION. WHERE FEASIBLE, EXCAVATED MATERIAL WILL BE USED FOR FILL AND REMAINDER SIDE-CAST ALONG DOWNSLOPE SIDE OF THE TRAIL IN MANNER TO MAINTAIN SHEET FLOW PERPENDICULAR TO THE TRAIL AND DOWNSLOPE ACROSS PRESERVED VEGETATIVE SURFACES. THE DUFF LAYER REMOVED WILL BE PLACED ON TOP SIDE OF SIDE-CAST SOILS TO ALLOW FOR NATURAL AND STABILIZE SIDE-CAST SOILS. REFER TO DETAIL 911-B SHEET D-5.
5. EXISTING VEGETATION WILL BE PRESERVED TO ALLOW FOR NATURAL FILTRATION OF SHEET RUN OFF, ANY DISTURBANCE OF VEGETATION DURING WILL BE LIMITED TO MINIMUM EXTENT PRACTICABLE.
6. VEGETATION ROOTS SMALLER THAN 2-INCHES WITHIN THE TRAIL FOOTPRINT WILL BE REMOVED. OVERHANGING VEGETATION WILL BE TRIMMED TO A HEIGHT OF 10 FEET AND SHRUBS AND LIMBS WILL BE CLEARED APPROXIMATELY 4 FEET FROM EITHER SIDE OF THE CENTERLINE. FIELD ADJUST TRAIL ALIGNMENT AS NEEDED TO AVOID VEGETATION IMPACTS.
7. THE TRAIL TREAD WILL BE SLIGHTLY OUT-SLOPED AS DETAILED ON THESE DRAWINGS AND DESIGNED WITH APPROPRIATE GRADE VARIATIONS TO ALLOW WATER TO SHED FROM THE TRAIL SURFACE AS LOW ENERGY AND LOW VOLUME SHEET FLOW TO AVOID CONCENTRATED RUNOFF AND EROSION. THE TRAIL WILL BE CONSTRUCTED USING VARIETY OF TRAIL BUILDING EQUIPMENT INCLUDING, MINI EXCAVATOR, CHAINSAWS, HAND TOOLS, AND GAS POWER TRACK BUGGIES.
8. APPROPRIATE BEST MANAGEMENT FOR EROSION CONTROL AND SEDIMENT CONTROL MEASURES MAY BE IMPLEMENTED ON SITE SPECIFIC AND AS NEEDED BASIS. THESE ADDITIONAL TECHNIQUES INCLUDE FIBER ROLLS PER DETAIL ON THIS SHEET
9. ANY DUST ISSUE WILL BE MANAGED WITH 5 GALLON HAND WATER PUMP.
10. CONSTRUCTION FENCING WILL BE DETERMINED ON SITE AND FOLLOW SAME INSTALLATION DETAIL USED FOR SILT FENCING.
11. BMPs INCLUDING FIBER ROLLS WILL BE USED IN THE STAGING AREA TO ELIMINATE ANY WATER RUNOFF.

INSTALL AT TOP OF CUT SLOPE AND AT TOE OF SLOPE BELOW CONSTRUCTED TRAIL WHERE GROUND SLOPE IS GREATER THAN 20-PERCENT. INSTALL WHEN TRAIL CONSTRUCTION IS WITHIN 20-FEET OF EXISTING DRAINAGES OR OTHER WATER RESOURCES.

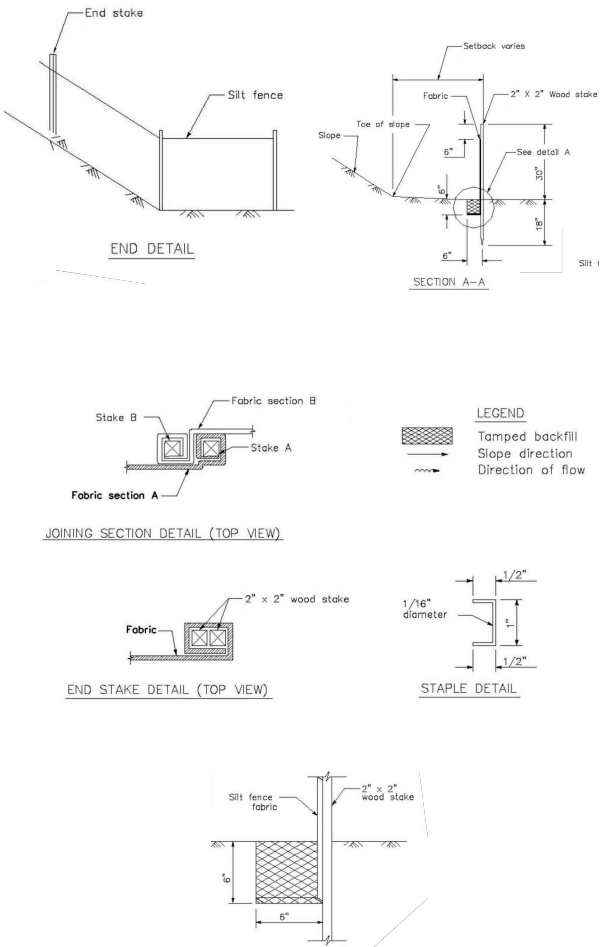


WILL BE MADE BY WRAPPING 100% ORGANIC BIODEGRADABLE COIR (COCONUT) FABRIC AROUND LOCALLY-SOURCED PINE NEEDLES (USE CERTIFIED WEED FREE STRAW IF PINE NEEDLES ARE NOT AVAILABLE). AT NO TIME SHALL "PHOTODEGRADABLE" OR "UV STABILIZED" MATERIAL BE USED. WATTLES WILL CONSIST OF MATERIAL THAT IS MADE OF COIR MATERIAL WITH AN OPEN WEAVE BIODEGRADABLE WOVEN GEOTEXTILE WITH A NON-SHIFTING SQUARE MESH CONSISTING OF 100% COIR FIBER YARNS IN BOTH THE WARP AND THE WEFT. PINE NEEDLE WATTLES ARE AVAILABLE AT CALIFORNIA PINE PRODUCTS (PHONE: 209-502-4108), OR EQUAL. AT NO TIME SHALL PLASTIC MESH BE USED.


SOURCE: GRAPHICS ADAPTED FROM CALIFORNIA STORMWATER BMP HANDBOOK PORTAL - CONSTRUCTION

A FIBER ROLLS / PINE NEEDLE WATTLES  
NO SCALE

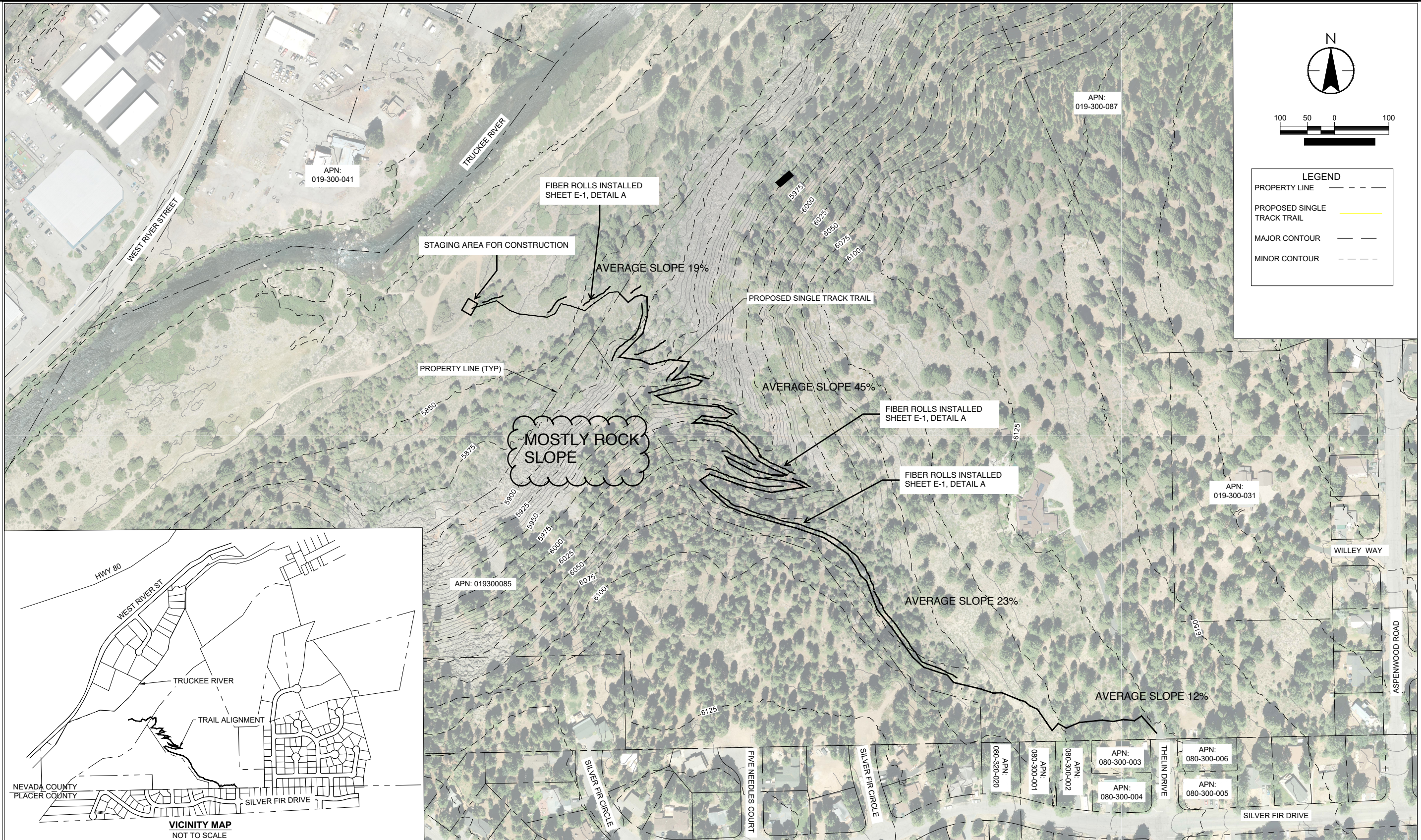
NOTE: FIBER ROLLS WILL BE INSTALLED ON THE DOWNHILL SLOPE TO CAPTURE POTENTIAL RUNOFF. BMPs WILL BE ADJUSTED BASED ON TRAIL CONSTRUCTION PROGRESS AT THE END OF EACH DAY.



B SILT FENCE DETAIL  
NO SCALE

 <div>P.O. Box 1751 Truckee, CA 96160 530-575-7682 Larry@truckeetrails.org License #1108018</div>	Project and Location  Thelin to Legacy Trail Connection Truckee, CA	Drawing  EROSION CONTROL AND BMP PLAN	Revision	Drawing no.  EP-1	
		Section	Scale  N/A	Sheet  12	of  13





P.O. Box 1751  
Truckee, CA 96160  
530-575-7682  
Larry@truckeetrails.org  
License #1108018

Project and Location  
Thelin to Legacy Trail Connection  
Truckee, CA

Drawing  
EROSION CONTROL AND BMP PLAN

Section

Revision  
Scale  
N/A

Drawing no.  
EP-2  
Sheet 13 of 13





March 5, 2025

**Board of Directors**

Kathryn McCamant  
*President*

Tom Holdrege  
*Vice President*

Debbie Wivholm  
*Treasurer*

Christy Sherr  
*Secretary*

Tim Ackerman  
*Assistant Secretary*

Robin Milam

Mike Chapel

Cathy Roberts

Jodi Starbird

Jo McProud

Rod Brown

Cathy Anderson-Meyers

Logan Egan

Erin Tarr  
*Executive Director*

Allison Pedley, Executive Director  
Truckee Trails Foundation  
P.O. Box 1751  
Truckee, CA 96160

Dear Ms. Pedley:

I am pleased to recommend Truckee Trails Foundation for construction of earth surface multi-use trails. As the Trails Coordinator for the Bear Yuba Land Trust for the past 22 years, I have worked with a number of contractors that specialize in trail construction. This past year, working cooperatively with the City of Nevada City, bids were solicited for trail construction and Truckee Trails Foundation was the successful bidder for one of the jobs.

I found that Truckee Trails Foundation utilized good equipment, had a very competent equipment operator and laborer, did excellent work, and completed the work to specification in a very reasonable length of time.

If you want any additional information please contact me at 530-272-5311 or via email [bbillhaire@aol.com](mailto:bbillhaire@aol.com).

Sincerely,

Bill Haire  
Trails Coordinator  
Bear Yuba Land Trust





**TRUCKEE DONNER  
LAND TRUST**

P.O. Box 8816, Truckee, CA 96162  
11073 Donner Pass Road, Truckee, CA 96161  
Tel. 530.582.4711 ♦ Fax 530.582.5528  
info@tdlandtrust.org ♦ www.tdlandtrust.org

**Board of Directors** March 13, 2025

Sidney Scott, President  
Jennifer Pearsall Kobert

Paco Lindsay  
Linda Orandi

Ted Owens

Pierre Patkay

Blair Porteous

Marc Randolph

Aparna Reddy

Daniel Simmons

Jean Snuggs

Brita Tryggvi

Town of Truckee  
10183 Truckee Airport Road  
Truckee, CA 96161

**Executive Director**

John Svahn

**Director of Philanthropy**

Danielle Williams

**Chief Financial Officer**

Dean Good

**Communications Director**

Greyson Howard

**Stewardship Director**

Kevin Starr

**Facilities Director**

Chris Rochefort

**Administration and Land**

**Acquisition Manager**

Bailey Sheridan

**Public Access/Trail**

**Coordinator**

Jesse Cassidy

**Forest/Restoration**

**Coordinator**

Daniel Joannes

**Executive Director**

**Emeritus**

Perry Norris

Dear Truckee Dirt Trail Program Committee,

I am writing to offer my strong support for the Truckee Trails Foundation and their applications under the Town's new Dirt Trail Grant Program.

In 2022, the Truckee Trails Foundation raised funds to plan and construct new soft surface trails at Waddle Ranch Preserve in Martis Valley-land owned by Truckee Tahoe Airport District but managed as a conservation easement by the Truckee Donner Land Trust. With oversight by the Land Trust, Truckee Trails successfully managed the California Environmental Quality Act permitting process, Nevada County grading permit, and the contract for environmental consulting services.

In 2023, the Truckee Trails Foundation professional Trail Crew built Bill's Trail (1.6mi), Sawmill Trail (3mi), and the Lookout Trail (.5mi) that made excellent additions to the existing network of trails in the area. The trails are frequented and enjoyed by a large cross section of user groups including hikers, bikers, and runners.

We at the Land Trust have been partnering with the Truckee Trails Foundation on dirt trail projects for over 15 years and look forward to the potential new trails that TTF may be working on under your grant program.

Sincerely,

Kevin Starr  
Stewardship Director  
Truckee Donner Land Trust

*Celebrating over 30  
years of serving our  
mission to Protect and  
Enjoy Open Space  
For Nature, For People,  
Forever.*