

- KEYED NOTES (SITE PLAN)**
- G.C. TO PROVIDE WAY-FINDING SIGNAGE (36" HIGH AND 36" WIDE) STATING "METAL ZINC" EMPLOYEE ENTRANCE" AND INCLUDING 911 ADDRESS ON IT.
 - G.C. TO PROVIDE WAY-FINDING SIGNAGE (36" HIGH AND 36" WIDE) STATING "WALSH & ALBERT" EMPLOYEE ENTRANCE" AND INCLUDING 911 ADDRESS ON IT.
 - G.C. TO PROVIDE SIGNAGE TO MATCH ADA PARKING SIGNAGE, EXCEPT WITH SIGN STATING "RESERVED PARKING".
 - G.C. TO PROVIDE PAINT AND THE DRIVE SIDE OF THESE SPACES STATING "VISITOR PARKING" ON THE PAVEMENT IN 12" TALL LETTERS, COLOR TO MATCH STRIPING.
 - G.C. TO PROVIDE WAY-FINDING SIGNAGE (36" HIGH AND 36" WIDE) STATING "METAL ZINC" WALSH & ALBERT TRUCK STAGING SPACE" AND INCLUDING ADDRESS ON IT.
 - G.C. TO PROVIDE WAY-FINDING SIGNAGE (36" HIGH AND 36" WIDE) STATING "METAL ZINC" WALSH & ALBERT TRUCK STAGING SPACE" AND INCLUDING CONTACT PHONE NUMBERS FOR BOTH COMPANIES. # TO BE NUMBER OF SPACES AS INDICATED ON SITE PLAN. CONFIRM EXACT WORKING FOR THIS SIGN WITH OWNER PRIOR TO ORDERING.
 - G.C. TO PROVIDE WAY-FINDING SIGNAGE (36" HIGH AND 36" WIDE) STATING CONTACT PHONE NUMBERS FOR BOTH COMPANIES. CONFIRM EXACT WORKING FOR THIS SIGN WITH OWNER PRIOR TO ORDERING.
 - PROVIDE YELLOW 4" STRIPING TO ALIGN WITH LOADING DOOR DOORS (BOTH SIDES) TO A LENGTH OF 8' FROM BUILDING WALL.
 - PROVIDE RED 4" STRIPING WITH DIAGONAL CROSS HATCH STRIPING TO IDENTIFY A 9' WIDE WALK PATH FROM BUILDING STAIR OR DOOR TO FIRE LANE.

10/24/2024

BID / PERMIT ISSUE

Date: 05/11/2024

CDA Architects
 Architects & Engineers
 202446 State Hwy 249, Suite 200
 Irving, Texas 77037
 832/678-9938 Fax: 832/678-9240

METAL ZINC, LLC

SITE PLAN AND WAYFINDING PLAN

METAL ZINC, WALSH AND ALBERT
 2401 S. PERSIMMON ST.
 TOMBALL, TX 77375

A000

DATE: OCT. 17, 2023
 SHEET NO.

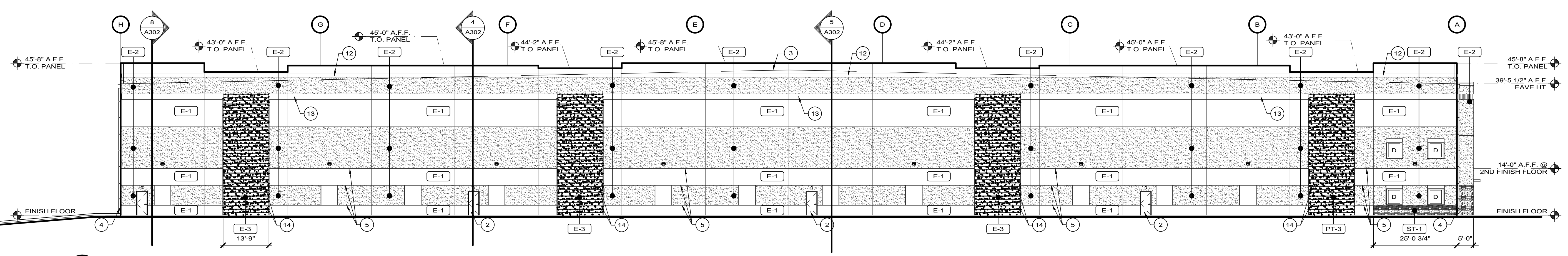
1 SITE PLAN
 SCALE: 1" = 40'-0"

FINISH SCHEDULE (ELEVATIONS)	
FINISH SELECTION	
PT-1	CONCRETE TILT-PANEL WALL SYSTEM. PAINT COLOR 1, BASE COLOR: TO BE DETERMINED
PT-2	CONCRETE TILT-PANEL WALL SYSTEM. PAINT COLOR 2, ACCENT COLOR: TO BE DETERMINED
PT-3	CONCRETE TILT-PANEL WALL SYSTEM. PAINT COLOR 3, DETAIL COLOR: TO BE DETERMINED
ST-1	VENEER STONE AS SELECTED BY GC
E-1	EIFS FINISH ON RIGID FOAM BOARD OVER METAL PANELS AT FUTURE EXPANSION WALL (TO MATCH PAINTED TILT-WALL) OR STUCCO ALTERNATE. PAINT COLOR 1
E-2	EIFS FINISH ON RIGID FOAM BOARD OVER METAL PANELS AT FUTURE EXPANSION WALL (TO MATCH PAINTED TILT-WALL) OR STUCCO ALTERNATE. PAINT COLOR 2
E-3	EIFS FINISH ON RIGID FOAM BOARD OVER METAL PANELS AT FUTURE EXPANSION WALL (TO MATCH PAINTED TILT-WALL) OR STUCCO ALTERNATE. PAINT COLOR 3

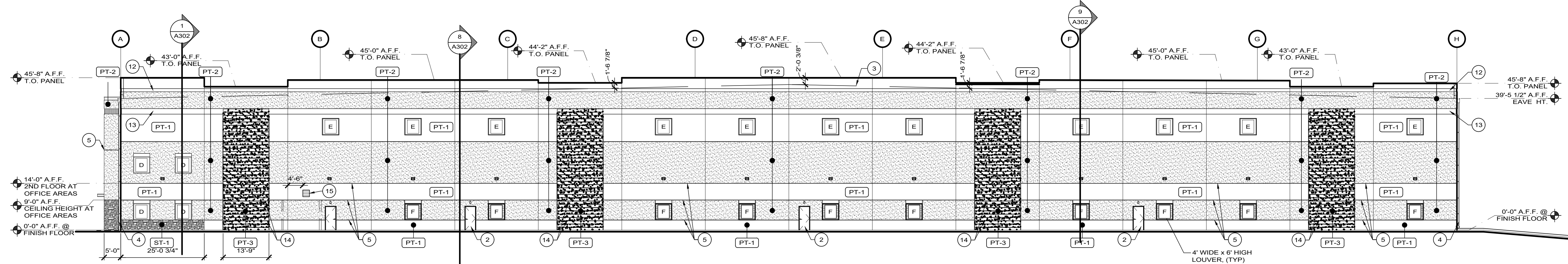
NOTE
ALL ITEMS MOUNTED ON THE EXTERIOR WALLS OF THE BUILDING ARE TO BE PAINTED, INCLUDING BUT NOT LIMITED TO: H.M. DOORS, ELECTRICAL PANELS & GEAR.

LEGEND (ELEVATIONS)	
	WALL PACK FIXTURE, MOUNT @ 13'-0" AFF UNLESS NOTED OTHERWISE ABOVE OVERHEAD DOORS, RE: ELEC.
	LED EMERGENCY EXIT LIGHTING, MOUNT AT 6'-0" TO BOT. FIXTURE, RE: ELEC.
	WINDOW TYPE KEY, RE: A600

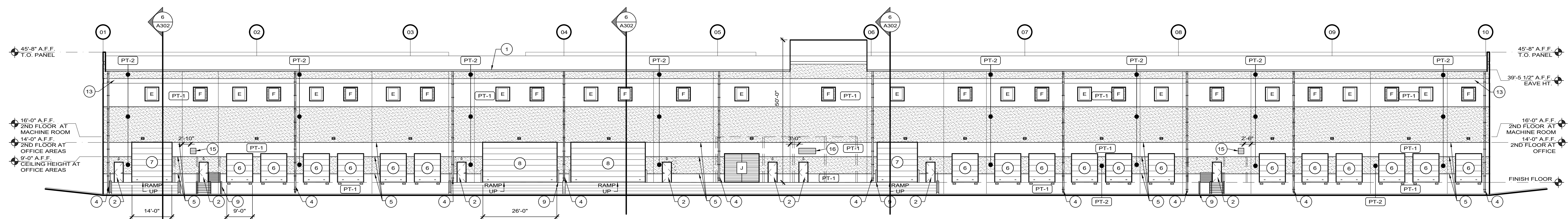
KEY NOTES (ELEVATIONS)	
1	TPO ROOF SYSTEM
2	3"x7" INSULATED METAL DOOR AND FRAME (PAINTED TO MATCH BUILDING DIRECTLY SURROUNDING DOOR). RE: DOOR TYPE B / A600. PAINT COLOR 2: TO BE DETERMINED
3	ROOF LINE BEYOND. RE: A140
4	PRE-FINISHED METAL GUTTER & DOWNSPOUT W/ (4) 2" EVENLY SPACED STRAPS DOWNSPOUTS AT WEST ELEVATION TO ROUTE UNDERGROUND AND SPILL OUT AT FACE OF PARKING LOT CURB. TYPICAL ON THIS SIDE ONLY.
5	REVEAL, RE: REVEAL DETAIL TYPE A, 01/A301.
6	9'-0" x 10'-0" OVERHEAD DOOR, (TYPICAL), RE: A600 COLOR: TO BE DETERMINED
7	14'-0" x 14'-0" OVERHEAD DOOR, (TYPICAL), RE: A600 COLOR: TO BE DETERMINED
8	36'-0" x 14'-0" OVERHEAD DOOR, (TYPICAL), RE: A600 COLOR: TO BE DETERMINED
9	4" CONCRETE BOLLARD, RE: 05/A001
10	24'-0" x 2' CANOPY AT 10'-0" A.F.F.
11	VERTICAL REVEAL ACCENT BAND, RE: REVEAL DETAIL TYPE ??
12	REVEAL, RE: REVEAL DETAIL TYPE B, 06/A301.
13	REVEAL, RE: REVEAL DETAIL TYPE C, 10/A301.
14	REVEAL, RE: REVEAL DETAIL TYPE D, 13/A301.
15	EXHAUST LOUVERS FOR RESTROOMS, 2' x 2' @ 10' A.F.F., RE: MECHANICAL
16	EXHAUST LOUVERS FOR RESTROOMS, 6' x 2' @ 10' A.F.F., RE: MECHANICAL



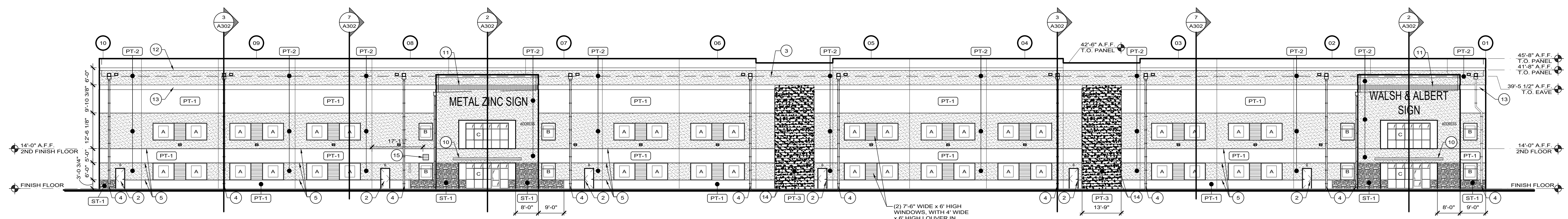
04 NORTH ELEVATION
SCALE: 1/16" = 1'-0"



03 SOUTH ELEVATION
SCALE: 1/16" = 1'-0"



02 EAST ELEVATION
SCALE: 1/16" = 1'-0"



01 WEST ELEVATION
SCALE: 1/16" = 1'-0"

05/24/2024

BID / PERMIT ISSUE

CDA Architects
Architects
20446 State Hwy 249, Suite 200
Irving, Texas 77039
8321/678-9240
8321/678-9238

METAL ZINC, LLC

EXTERIOR ELEVATIONS

METAL ZINC, WALSH AND ALBERT
2401 S. PERSIMMON ST.
TOMBALL, TX 77375

A200

DATE ASSIGNED: PROJECT 12187 DATE OCT 17, 2023 SHEET NO.