

Westwood

South Region

Landscape Architecture Group



Melissa, TX

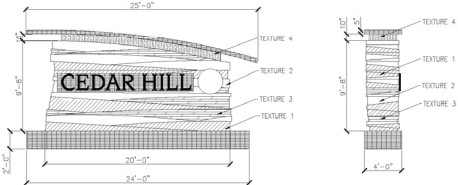


Cedar Hill, TX

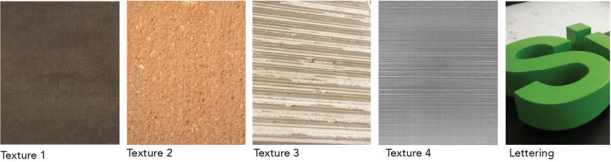
PERSPECTIVE



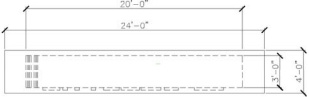
ELEVATION



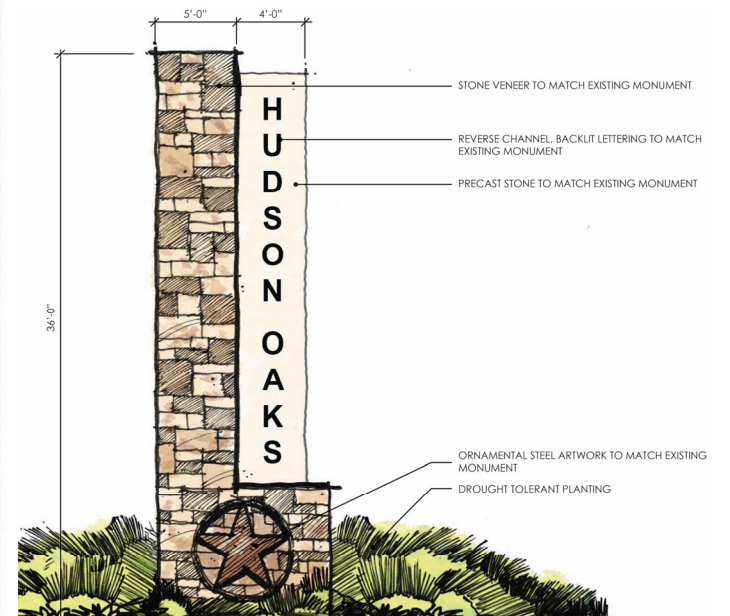
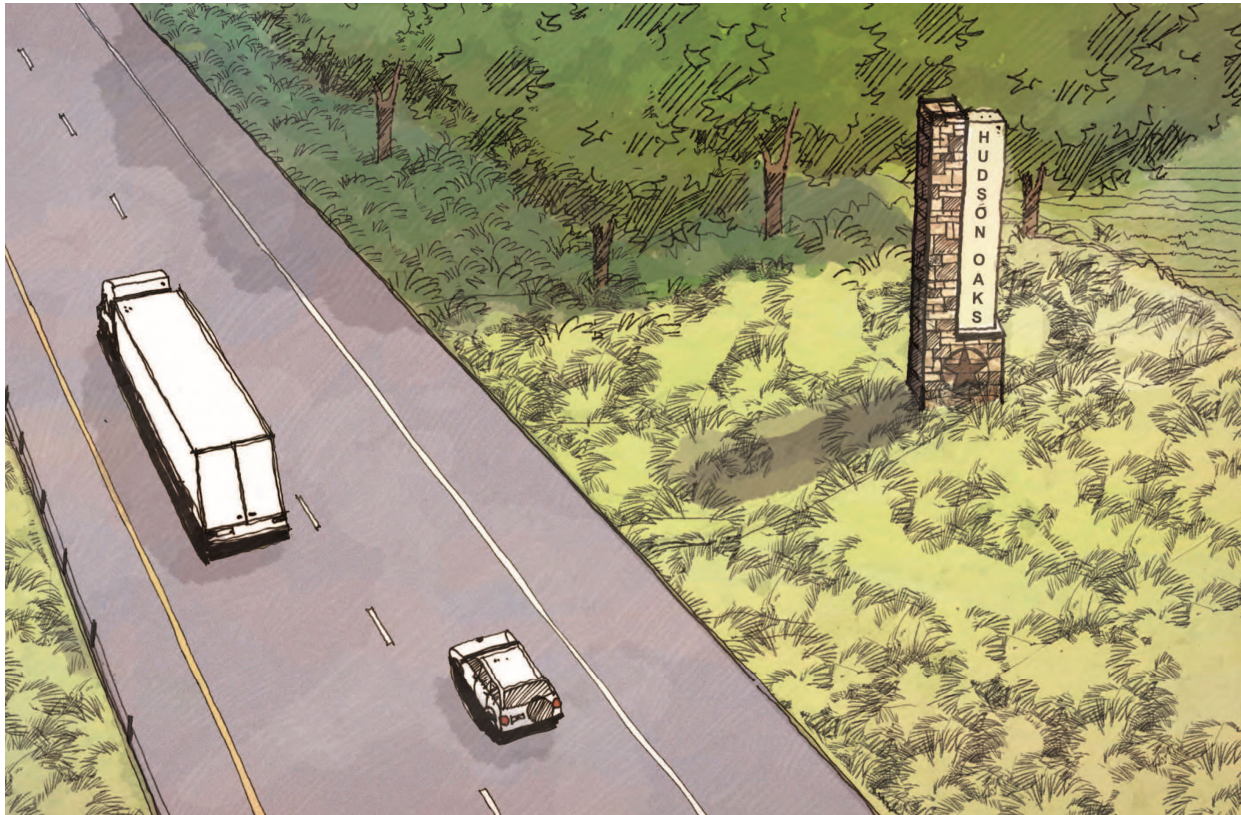
MATERIALS AND COLOR



PLAN



Hudson Oaks, TX



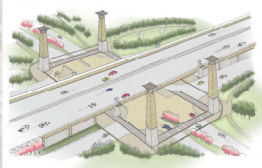
Gene L. Voyles Pavilion, Hudson Oaks, TX



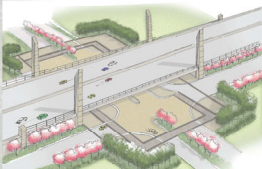
SM Wright Parkway, Dallas, TX

MONUMENTS AND WALLS | DESIGN RECOMMENDATIONS

ENTRY GATEWAY

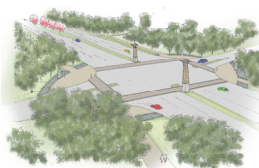


Craftsman Abstract: Bridge Adjacency



Steeple Abstract: Bridge Attachment

NEIGHBORHOOD GATEWAY



Craftsman Abstract



Steeple Abstract

FINISH



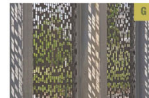
Stainless Steel



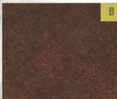
Stone Veneer - Rough



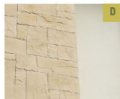
MSE Precast - Raised



Screen - Perforated Metal Plate



Corten



Stone Veneer - Smooth

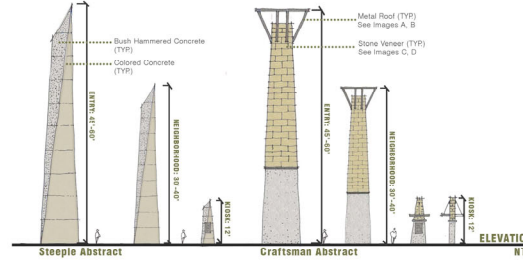


MSE Precast - Tooled



Screen - Perforated Metal w/ Glass Inlay

MONUMENT - DESIGN OPTIONS



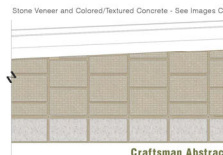
OVERPASS WALL - MSE PRECAST OPTIONS



Craftsman Abstract



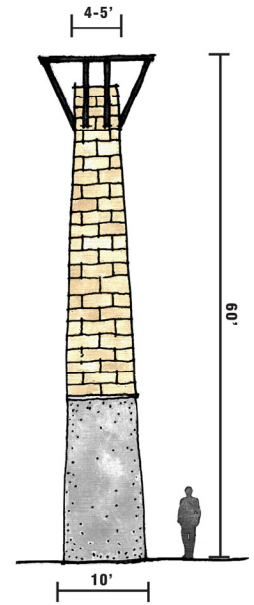
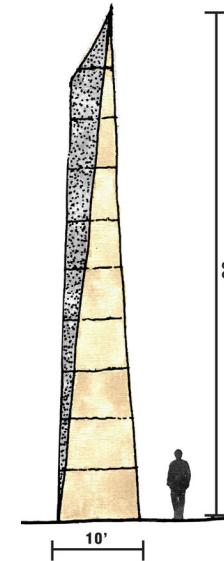
Steeple Abstract



Craftsman Abstract

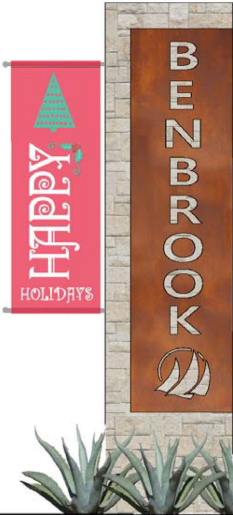


Steeple Abstract



Benbrook, TX

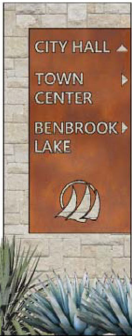
MONUMENT SIGN



MEDIAN SIGN



WAYFINDING



LOCATION MARKER



Rock Creek Ranch, Fort Worth, TX



Big Thicket National Preserve Parkway

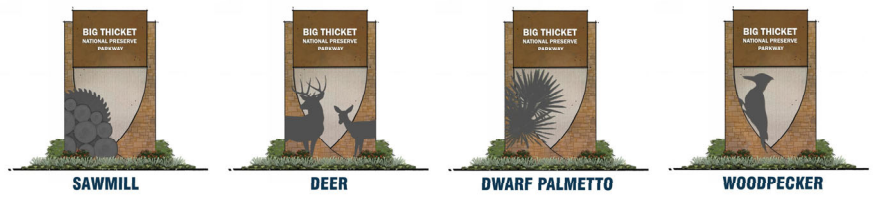
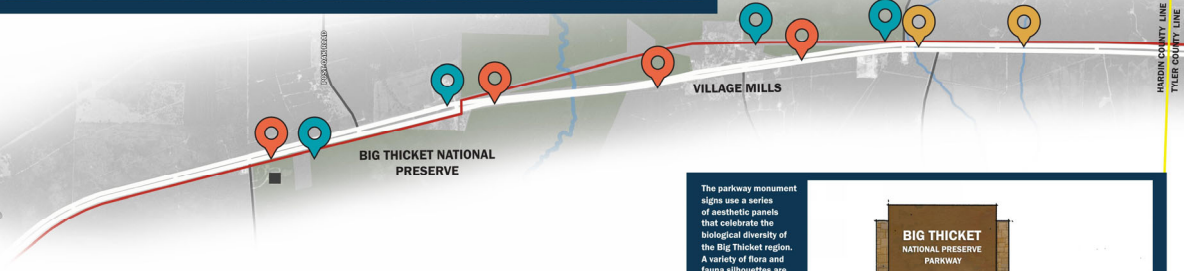
VILLAGE CREEK BRIDGE CROSSING

Village Creek is a major asset to the local community. Big Thicket National Preserve, and the city of Village Mills. It is a center point for outdoor recreational activities and is the largest creek crossing along the corridor.

By creating a landmark structure over Village Creek, the bridge will become an iconic feature and the Big Thicket region as a whole for users along the corridor.



- PARKWAY MONUMENT SIGNAGE
- BRIDGE MONUMENT SIGNAGE
- TRAIL SIGNAGE



The parkway monument signs use a series of aesthetic panels that celebrate the biological diversity of the Big Thicket region. A variety of flora and fauna silhouettes are displayed to add large scale visual interest to the vehicular corridor. The stone, concrete, and steel sign structures remain the same, to establish a consistent look and feel along the entire parkway.

PARKWAY MONUMENT SIGNAGE



Westwood

