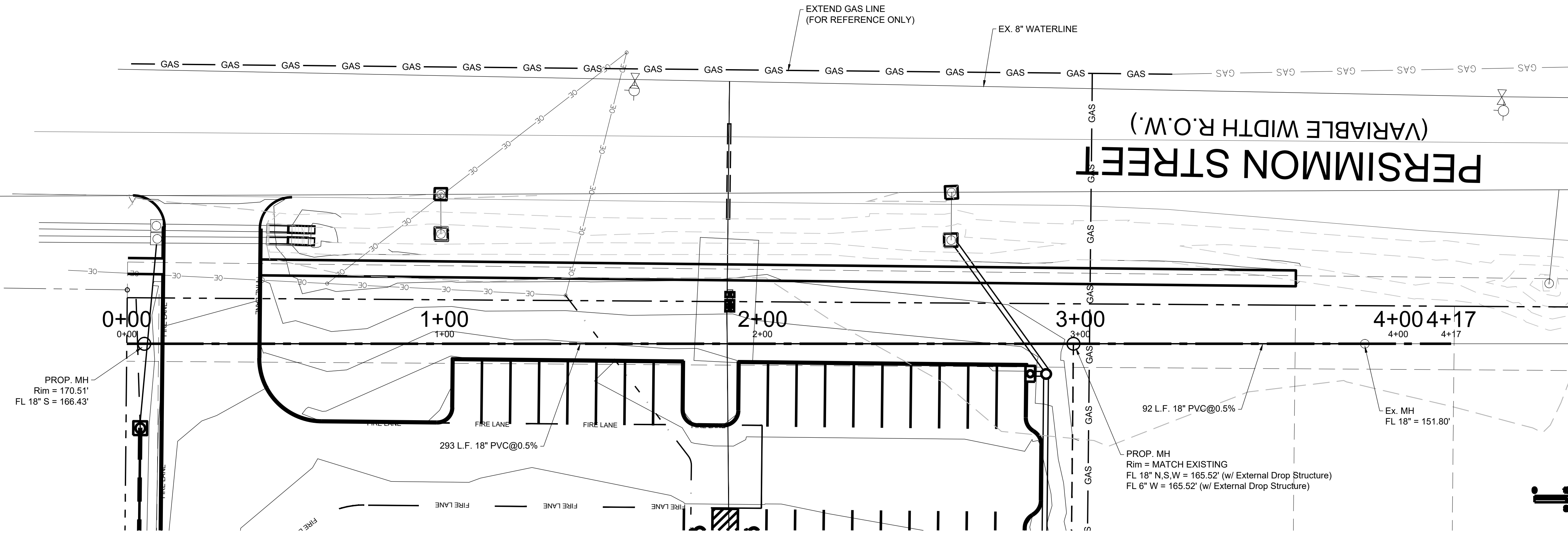


# Exhibit B



VICINITY MAP  
N.T.S.

### Utility Legend

Street Signs	Street Light
Plug	Taping Sleeve & Valve
Blow-Off Valve	Clean Out
Gate Valve	San Manhole
Fire Hydrant	Storm Inlet
Tee	Storm Manhole
FL FLOWLINE	PC Point of Curve
TOB Top of Bank	ROW Right of Way
LF Linear Feet	UE Utility Easement
RCP Reinforced Conc Pipe	CO Cleanout
TP TOP OF PAVING	TG TOP GRAVEL
SW SIDE WALK	PG PROP. GRADE
NG NATURAL GRADE	TC TOP CURB
SET SAFETY END TREATMENT MH	MAHOLE
FH FIRE HYDRANT	FF FINISHED FLOOR
GAS GAS LINE	EXIST. GAS LINE
EX. GAS LINE	EXIST. OVERHEAD ELECTRIC
EX. OVERHEAD ELECTRIC	EXIST. SANITARY PIPE
EXIST. SANITARY PIPE	EXIST. WATER PIPE
EXIST. WATER PIPE	PROP. SANITARY PIPE
PROP. SANITARY PIPE	PROP. WATER PIPE
PROP. WATER PIPE	PROP. UNDERGROUND ELECTRIC
PROP. UNDERGROUND ELECTRIC	

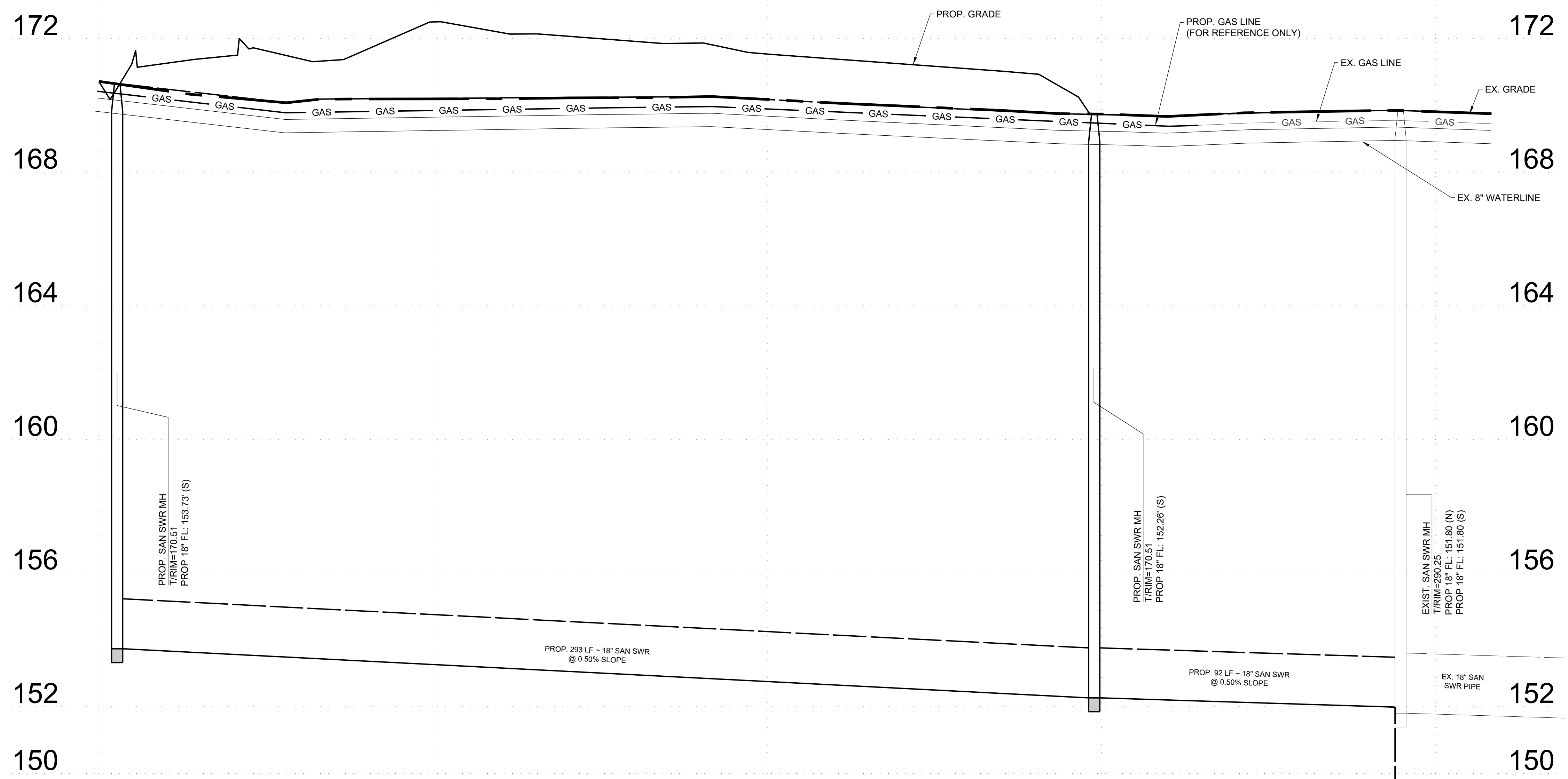
NOTES:  
1. THIS PROJECT DOES NOT LIE WITHIN THE 100 YEAR FLOODPLAIN AS SHOWN, ACCORDING TO FEMA FIRM #48201C0230L - 06/18/2007



REVISIONS:  
1. REVISION:

## LITTLEFIELD OFFICE BUILDING PERSIMMON ST UTILITY EXTENSION PLAN & PROFILE

Harris County Tomball, Texas  
Design: CDF CAD: CDF Job No: 80521-053 Drawing No: 02B



Project Name: P.L. 21-06-2023 - 041147  
 Project No: 80521-053  
 Project Location: 1-1-2022 - 05/23/2023  
 Project Description: LITTLEFIELD OFFICE BUILDING - UTILITY MAP 2 - 80521-053

80521-053 HUFFCO LITTLEFIELD SITE PLAN