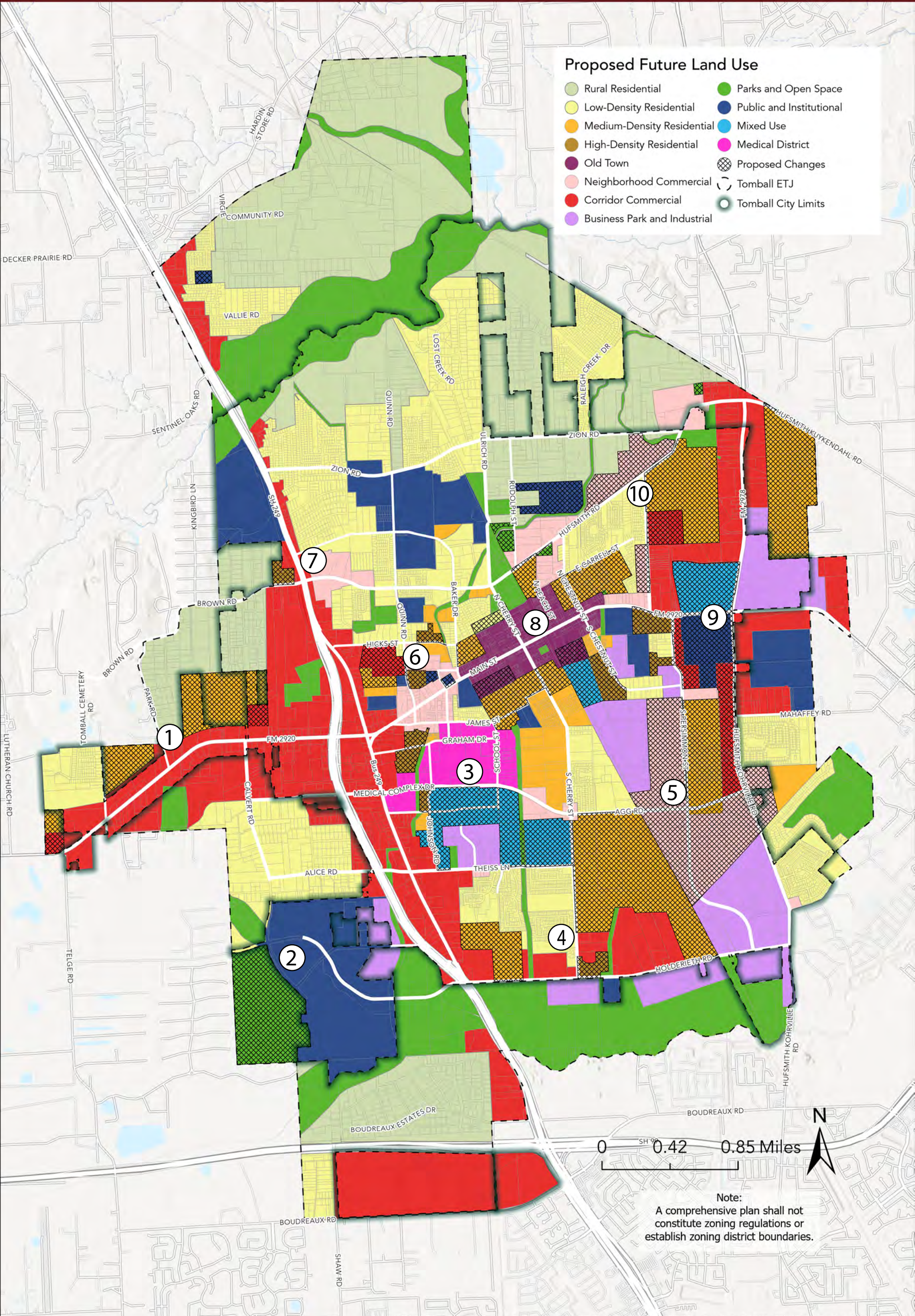


PROPOSED FUTURE LAND USE MAP



Proposed Future Land Use

- Rural Residential
- Low-Density Residential
- Medium-Density Residential
- High-Density Residential
- Old Town
- Neighborhood Commercial
- Corridor Commercial
- Business Park and Industrial
- Parks and Open Space
- Public and Institutional
- Mixed Use
- Medical District
- Proposed Changes
- Tomball ETJ
- Tomball City Limits

Note:
A comprehensive plan shall not constitute zoning regulations or establish zoning district boundaries.