

# CITY OF TOMBALL

Parks, Recreation, and Trail System Master  
Plan



February 2024



# Purpose & Vision

The purpose of this plan is to **establish a comprehensive and connected trail system of parks, recreation facilities, and trails that promotes public health, social well-being, and economic vitality**. This Master Plan will serve as a road map for the City **over the next 10 years**, guiding the development, expansion, and planning of parks and recreational facilities throughout the community.



**Population Growth  
since 2010:**

**National: 7.3%**

**Texas: 16.2%**

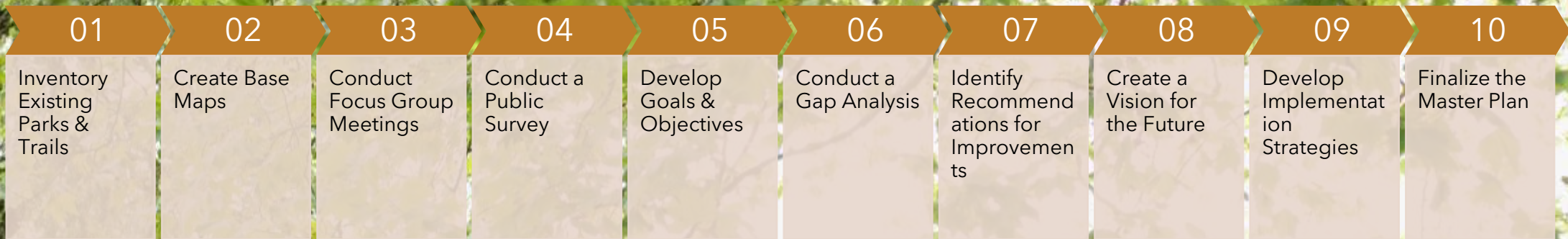
**Tomball: 20.8%**

Source: \*U.S. Census Bureau QuickFacts: Texas.\* [www.census.gov](http://www.census.gov), [www.census.gov/quickfacts/fact/table/TX](http://www.census.gov/quickfacts/fact/table/TX).

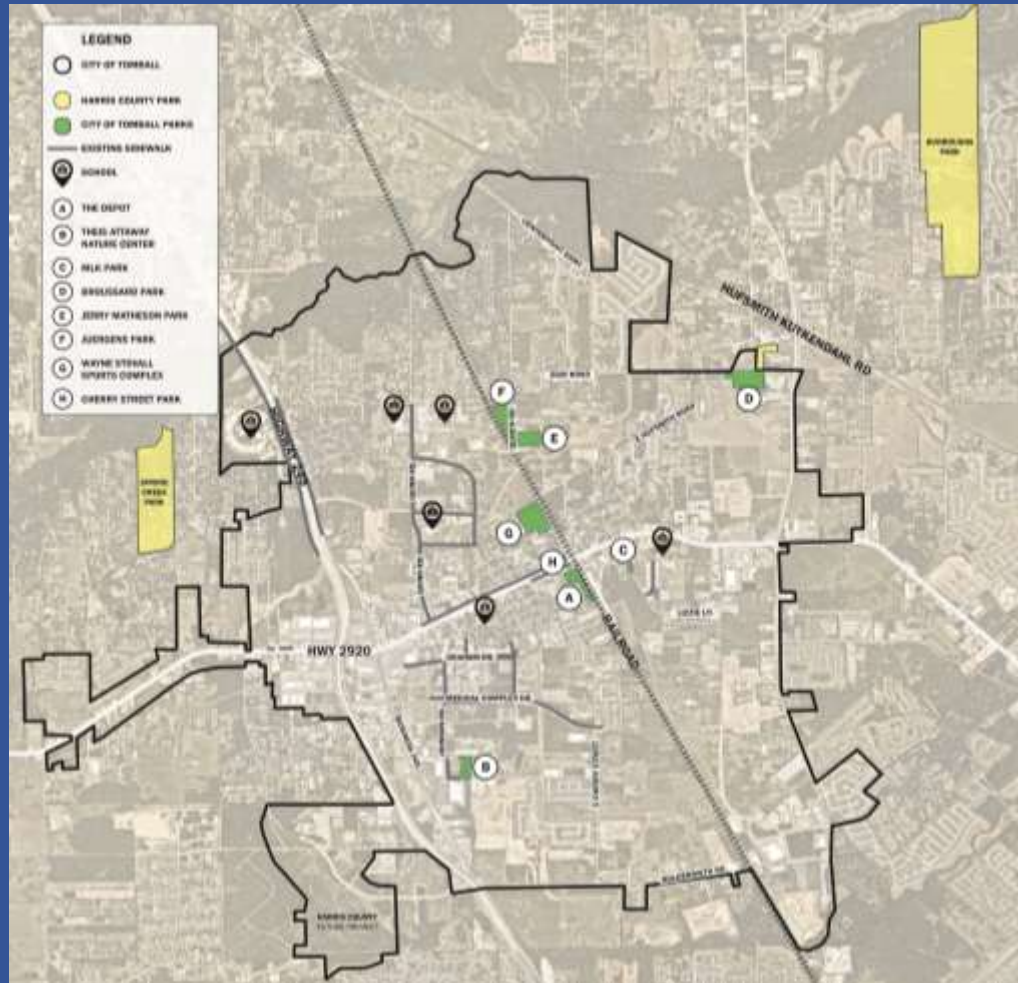
# EVALUATING TOMBALL'S PARK & REC SYSTEM

- 1** What is the current condition of Tomball's Parks & Rec Facilities?
- 2** What should high quality parks look like in Tomball?
- 3** Does Tomball need new park facilities?
- 4** How does Tomball get there?
- 5** What are some Potential Funding Mechanisms?

# Methodology

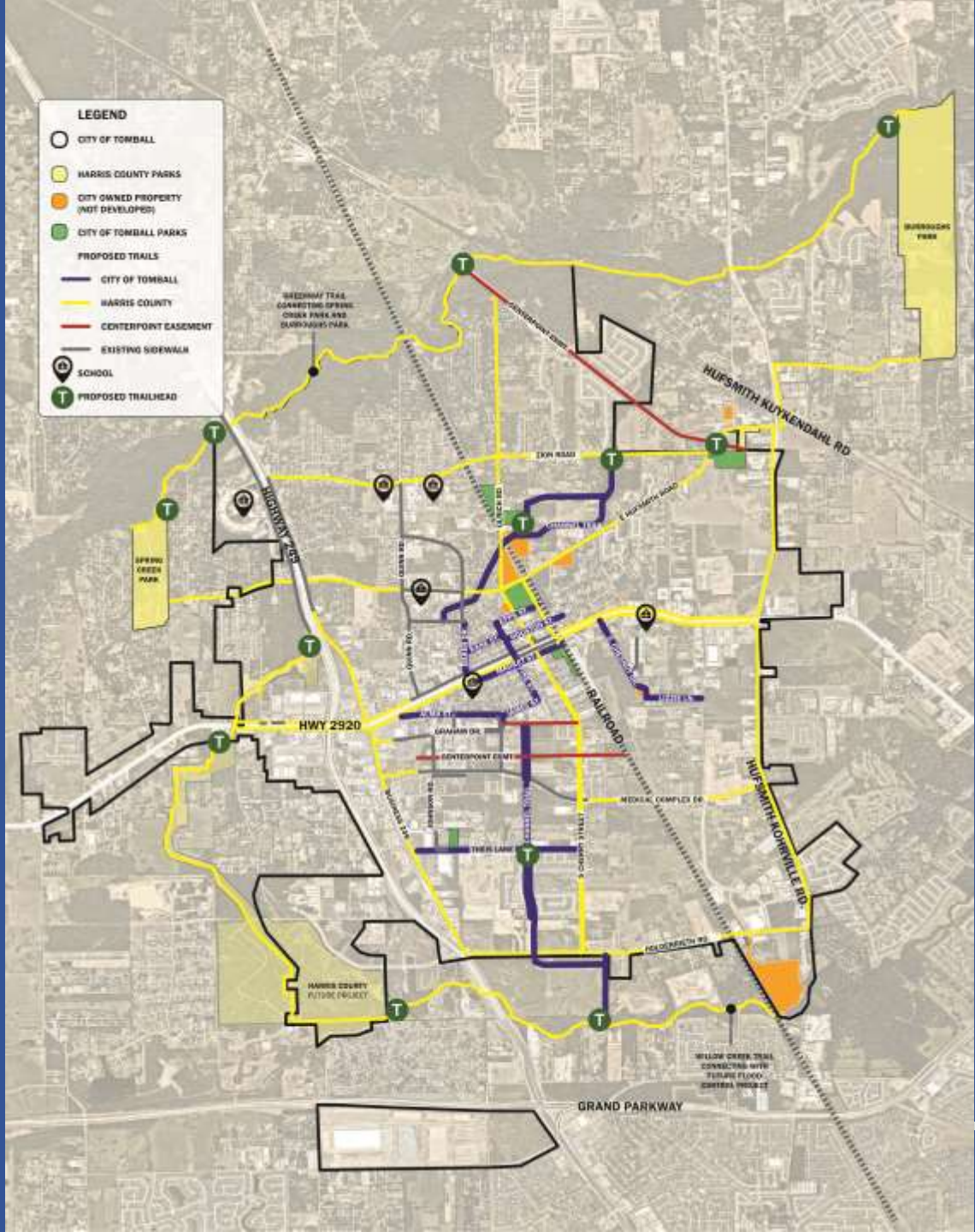


# Existing Trails



# Proposed Trails

Connectivity through trails is an essential component of a city's recreational and transportation infrastructure. Trails provide safe and accessible routes for pedestrians, cyclists, and other non-motorized modes of transportation, connecting people to various amenities and recreational activities throughout the city.



# Goals for Tomball's Trail System

1. Create a comprehensive and **connected trail system** throughout Tomball. Aim to meet the national average (55%) for the "10-Minute Walk" Initiative by 2033
2. Increase accessibility to outdoor recreation for all members of the community.
3. Improve public health and wellness by encouraging physical activity through trail usage.
4. Create trail connections between existing Tomball parks.
5. Enhance connectivity between Downtown CBD, neighborhoods, parks, and other amenities in the city.
6. Improve walk-ability downtown.
7. Incorporate trails with wider widths to accommodate bicycle users.
8. **Set a minimum standard width of 8' for primary trails. Secondary trails or typical sidewalks where space is not available should have a minimum width of 5'.**
9. **Downtown sidewalks/ trails should have a minimum standard of 6' width and meet Texas Accessibility Standards.**
10. New drainage & utility projects should explore opportunities for recreation & trails.



# Park Inventory

7

Existing C.O.T.  
Tomball Parks

59

Acres of  
Parkland

2

Special Use  
Parks

2

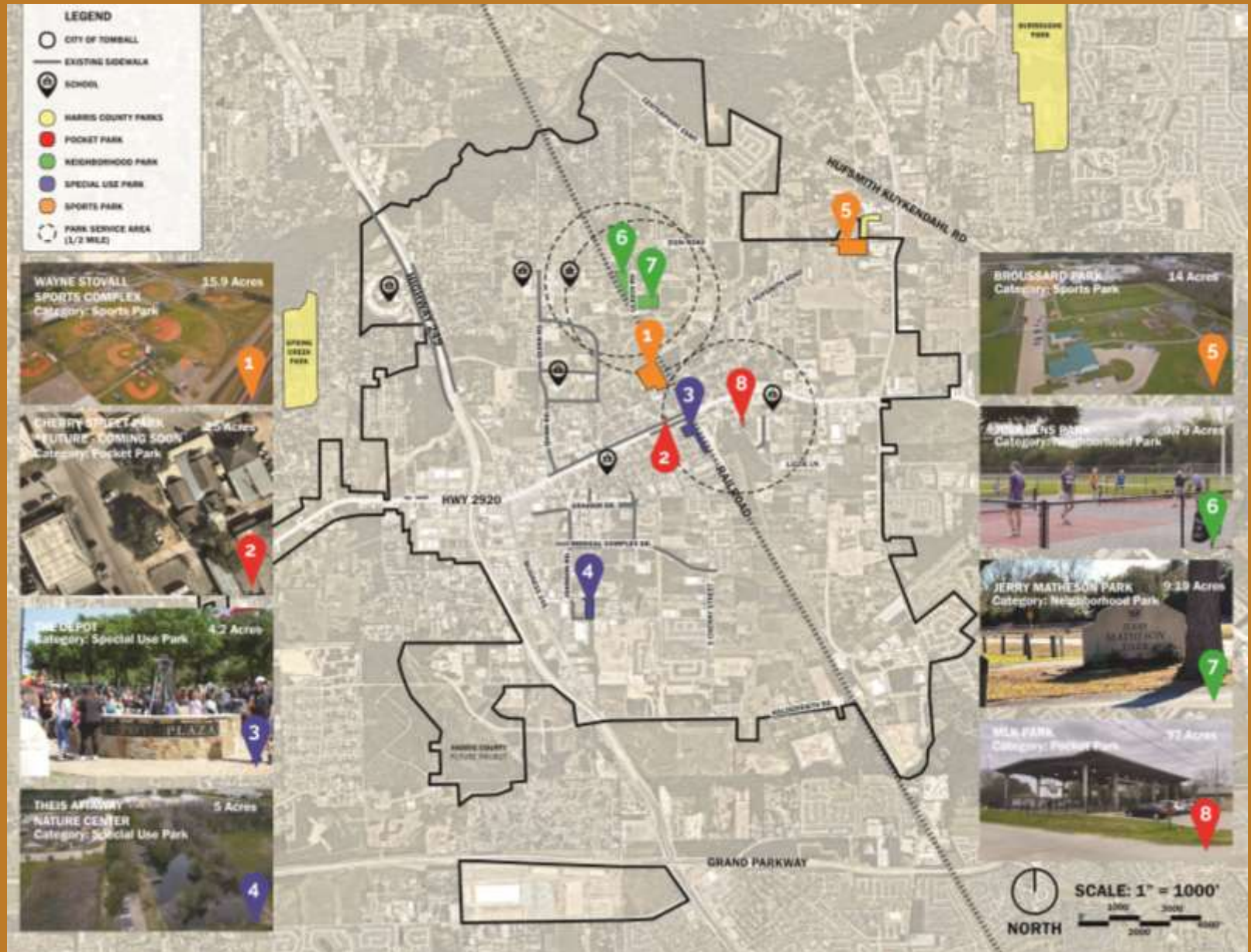
Sports  
Parks

1

Pocket  
Park

2

Neighborhood  
Parks





# Existing Parks



**WAYNE STOVALL SPORTS COMPLEX**



**BROUSSARD PARK**

# Existing Parks



**THEIS ATTAWAY NATURE CENTER**



**MARTIN LUTHER KING JR. PARK**

# Existing Parks



# Existing Parks



# Master Plan

## Goals & Objectives

**Goal #1:** Enhance the experience of both residents and visitors of the greater Tomball area. Specifically focusing on enhancing the downtown experience, festivals, parks, open spaces, recreation, and trails.

**Goal #2:** To elevate the community's quality of life, stimulate economic growth, and foster healthier lifestyles by leveraging the potential of parks, recreation, and the establishment of a city-wide trail system.

**Goal #3:** Provide safe, clean, and accessible parks, promoting healthy lifestyle choices for people in the community.

**Goal #4:** Explore opportunities for future expansion of Tomball's park system. Prioritize the integration of a park dedication ordinance for developers and incorporate provisions for parks and trails in upcoming infrastructure and drainage projects.

**Goal #5:** Acquire and retain dedicated City Staff to focus on Capital Improvement Projects (CIP), operations, and maintenance of Tomball's Parks.

---

# Community Input

Staff conducted several focus group meetings with members appointed by City Council as part of the Parks and Recreation Master Plan.

We also gathered insights and feedback from various groups and organizations in the community.



## WE ASKED:

Do you support the idea of enhancing or improving City of Tomball Parks, Trails, and Recreational Facilities?

Do you feel that there is a need for additional park amenities in Tomball?

Are you in support of a NEW park?

100%

OF RESPONDENTS  
ANSWERED YES!



**WE NEED YOUR INPUT!**  
The City of Tomball is creating a comprehensive master plan for parks and recreational facilities, and **we want your help** to shape the future of our community.



Please join us for an Open House on:

**April 25, 2023**  
**6pm-8pm**

**TOMBALL COMMUNITY CENTER**  
**221 Market Street**  
**Tomball, TX 77375**



**INFO CARDS WITH SURVEY LINK**

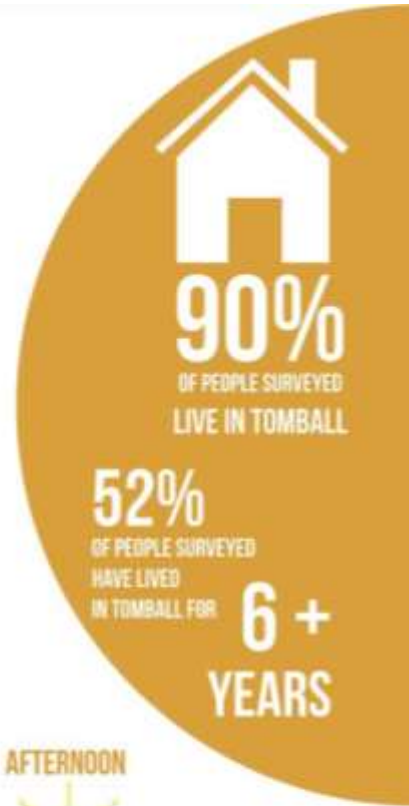
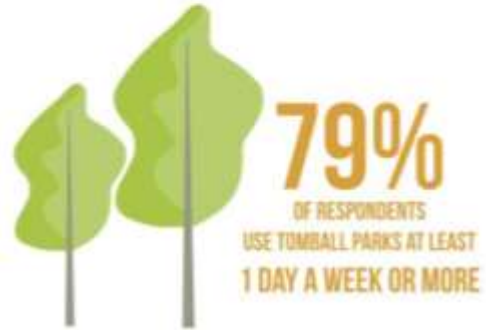
**Public Input**

**472**

**Survey Responses**

Survey data collected between  
April 1<sup>st</sup> – May 15<sup>th</sup>

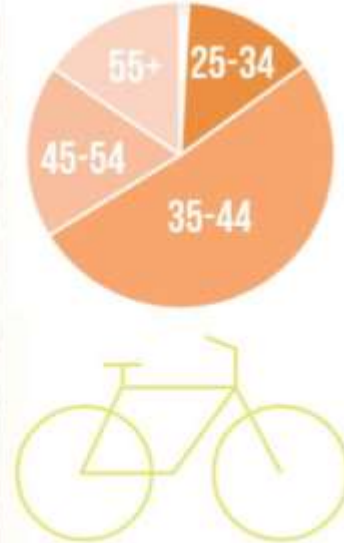
# Public Survey Results



## WHAT AMENITIES WOULD YOU LIKE TO SEE IMPROVED WITHIN THE EXISTING TOMBALL PARKS?



## AGE RANGE OF SURVEY RESPONDENTS

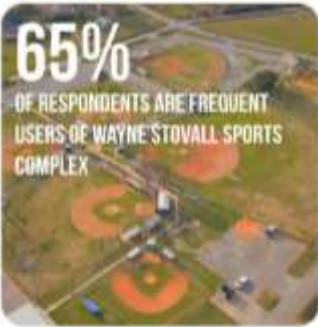




# Public Survey Results

WHICH PARKS ARE PEOPLE USING?

## TOP 3 MOST VISITED TOMBALL PARKS



## LEAST VISITED TOMBALL PARKS



67% of respondents have never visited MLK Park



52% of respondents have never visited Theis Attaway Nature Center

"We love Tomball!!  
Thank you!"

"I love the small  
town feel of the  
current parks."

"Best town in the  
world. Deserves the  
best parks in the  
world!"

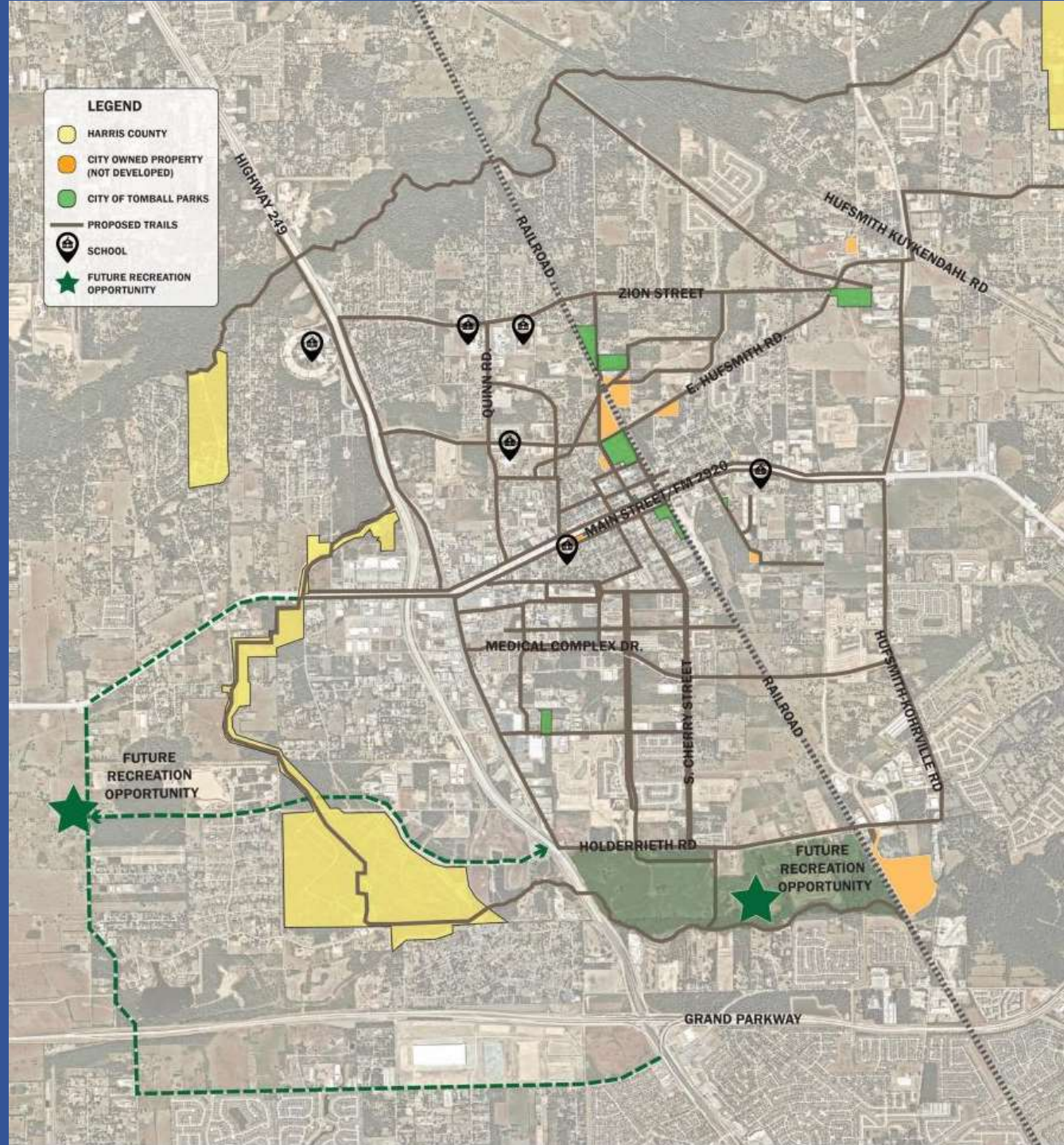
"I love the small town  
atmosphere of Tomball Texas.  
I like the Farmers Market and all  
the festivals. Tomball is a unique  
place to live."

"Very excited to see  
that the city is reaching  
out to see what the  
community wants!"



# Future Project Opportunities

City of Tomball Parks & Trails



# NRPA Guidelines for Park Space Per Resident

City of Tomball has a population of about **12,000 residents** and the total acreage of amenitized park space currently owned by the city is approximately **59 acres** within the city limits. This puts Tomball at roughly **4.9 acres of parkland per 1,000 residents**. Based on NRPA (National Recreation and Park Association) guidelines, Tomball falls below the national average. See Chart below for comparison.

$$59 \div 12 = 4.9$$

acres of amenitized park in COT      (12,000) residents      acres of parkland per 1,000 residents

	All Agencies	Less Than 20,000	20,000 to 49,999	50,000 to 99,999	100,000 to 250,000	More Than 250,000
Median	10.8	13.0	11.3	11.2	8.9	10.1
Lower Quartile	5.3	6.0	5.9	5.0	4.5	5.2
Upper Quartile	18.4	21.1	17.9	17.3	17.1	17.4

Data Source:  
2023 NRPA Agency Performance Review.  
Figure 2: Acres of Parkland Per 1,000 Residents.  
<https://www.nrpa.org/site-assets/nrpa-agency-performance-review.pdf>

# 10 Minute Walk

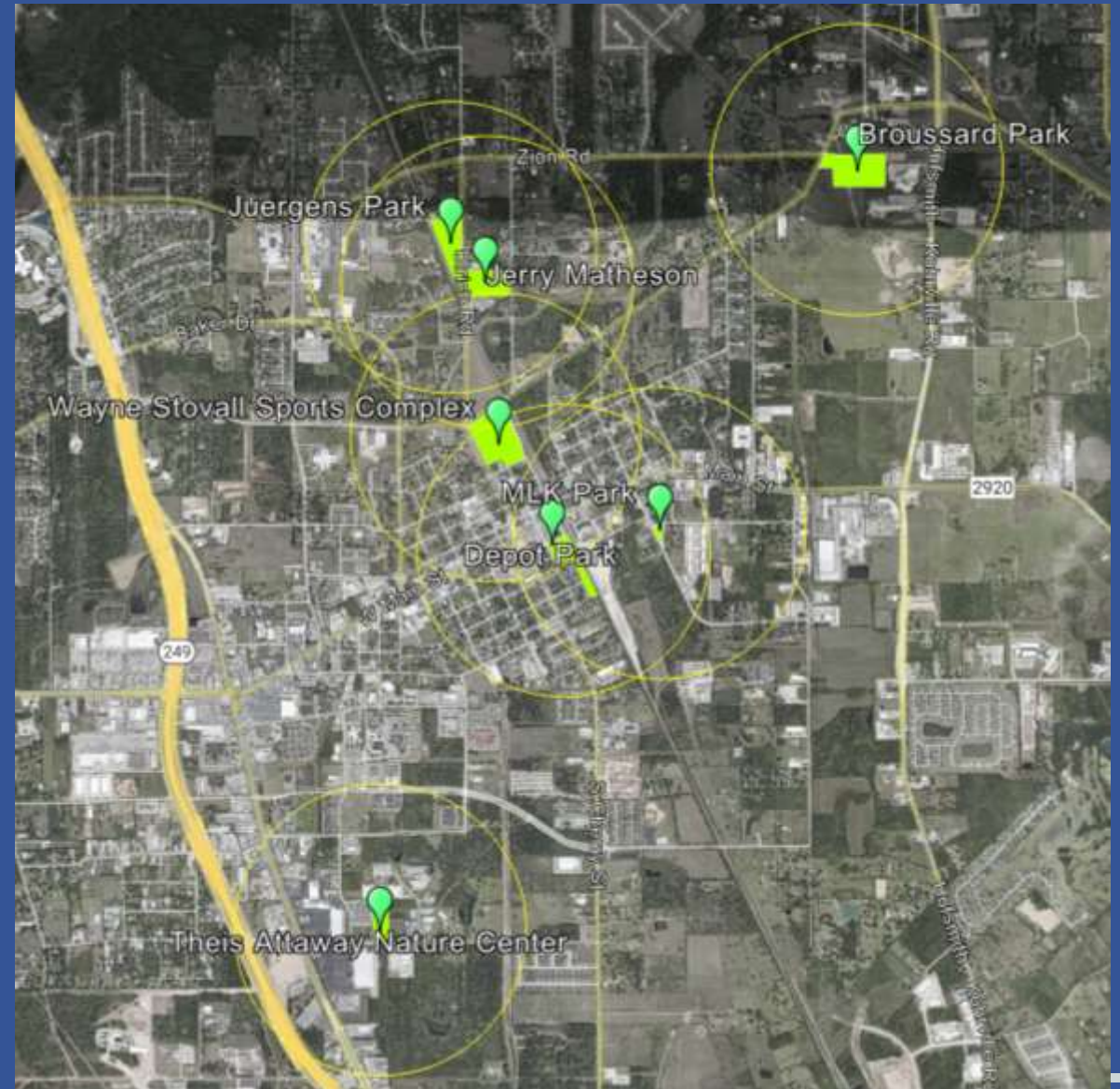
The 10-minute walk is an initiative led by the Trust for Public Land that aims to ensure that every person in an urban area has access to a quality park or green space within a 10-minute walk from their home.

**1/2 mile = 10 mins.**

**22%** of Tomball residents live within a 10-minute walk of a park. National Average 55%

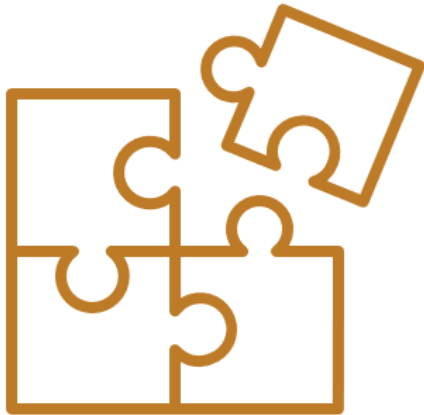
**61%** of Houston residents live within a 10-minute walk of a park.

Median City, 100 most populous U.S. cities: 74%  
Median City, all urban cities and towns in U.S.: 55%



# Potential Funding Sources

It's important for cities to research and explore a combination of funding sources that align with their specific needs and priorities. Additionally, leveraging multiple funding streams and engaging in community partnerships can enhance the financial feasibility of park projects and help ensure their successful implementation.



Local Government Funds



Grants: Texas Parks and Wildlife Department (TPWD)



Public-Private Partnerships



Other partnerships with Harris County, Harris County Flood Control District, and Centerpoint



Bond Issuance



Park Dedication & Development Fees



"Friends Of" Associations



Memorial Dedication Program

# Goals for Tomball's Parks

1. Create a plan for revitalization of each Park with Goals, Funding options and use the community's input for amenity enhancements.
2. Increase accessibility to outdoor recreation for all members of the community.
3. Improve public health and wellness by encouraging physical activity through Parks and Open space usage.
4. Create a Park Dedication and Development Ordinance. Use funding for expansion of existing parks and creation of new parks.
5. Create Parks Standards Manual for design, development and maintenance of park.
6. Complete a new park signage plan to guide replacement of park system signage to have a consistent brand.
7. Integrate Crime Prevention Through Environmental Design (CPTED) strategies in the design, construction and maintenance of parks to ensure a safe environment for all.
8. To continue to partner with other public and private entities for the redevelopment and enhancements of parks.



# CONCEPT SKETCH: Jurgens & Jerry Matheson Park

\*Note: Drawing is conceptual & subject to change



# CONCEPT SKETCH: This Attaway Nature Center

\*Note: Drawing is conceptual & subject to change





# CONCEPT SKETCH: Martin Luther King Jr. Park

\*Note: Drawing is conceptual & subject to change



# CONCEPT SKETCH: Wayne Stovall Sports Complex

\*Note: Drawing is conceptual & subject to change



# CONCEPT SKETCHES: The Depot

\*Note: Drawing is conceptual & subject to change

**SCHEME A**

between two train cars



**SCHEME C**

two pavilions



**SCHEME B**

pavilion at market street



**SCHEME D**

spanning the block



# Local Examples



The Woodlands, TX

**Bear Branch Park**



Houston, TX - East Aldine

**James Driver Park**



Spring, TX

**Rob Fleming Park**



Cypress, TX

**Josie Lake - Bridgeland**



Richmond, TX

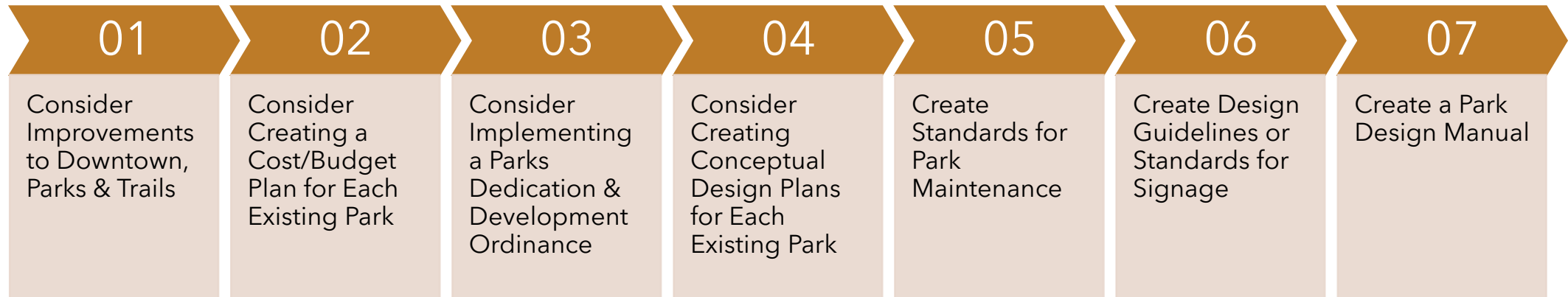
**Harvest Green Park**



Atascocita, TX

**The Groves**

# Conclusion



# TOMBALL

P A R K S



EXPLORE • PLAY • CONNECT

