

MODULAR PUMPTRACK SWITCHBACK

Highwire

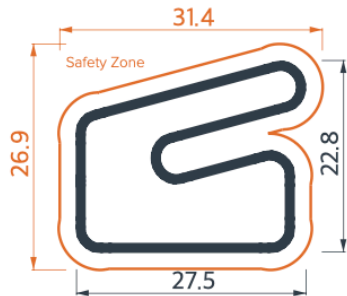


PARKITECT®

Key Specifications

Track length	126m
Layout area	630m ²
Net weight	4670kg
Custom pallets	22

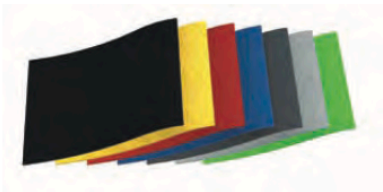
Assembled Dimensions (metres)



Options & Accessories

- Entry / Exit Kit
- City Armour Kit
- X1 Entry / Exit Modules (X1L & X1R)
- 8m track length extension, 4 bump modules

Riding Surface Colours



Switchback = \$78,095
Includes Shipping to Tenino, WA
Installation Not Included



413 ft of rideable track length

Alternative Layouts



Proposal Date: June 22nd 2021 (valid for 60 days)

Includes Colors / Black and Red
(curved Sections Only)



MODULAR PUMPTRACK ENTRY / EXIT KIT

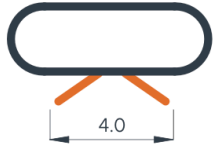
Highwire



Entry / Exit Kit

The Entry/Exit kit provides the modules & hardware necessary to add an entry & exit point to any Modular Pumptrack.

This kit is compatible with any new or existing layout. It can be purchased as an upgrade in conjunction with a new order or sold separately as an addition to an existing track.



Price includes Entry/Exit Modules and City Armour



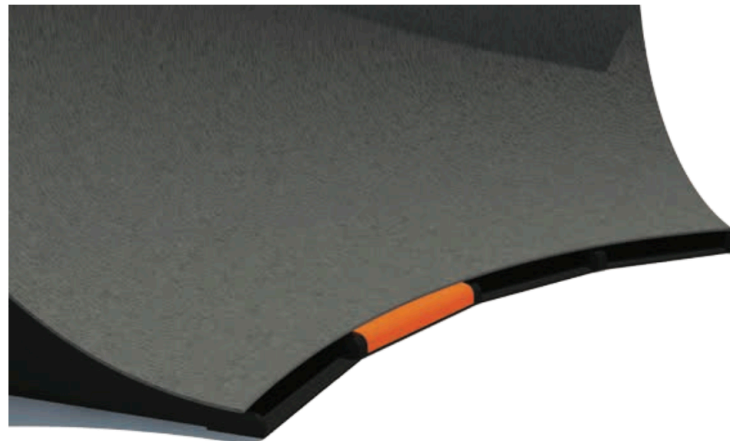
CITY ARMOUR

City Armour - CA1

City Armour for covering the front bolts and recess of the T03 module.

The CA1 covers the bolts to prevent tampering and improves safety on the side of the T03 corner module.

CA1 can be permanently fixed using hardware provide or easily installed without fasteners as an excellent addition for events.



Tamper Resistant Hardware

Tamper resistant hardware uses stainless 'pin-hex' button head security screws with washers and internal coupling nuts.

The internal pin stops the use of standard hex tools improving the tamper resistance of all hardware.





MODULAR PUMPTRACK



PARKITECT®

