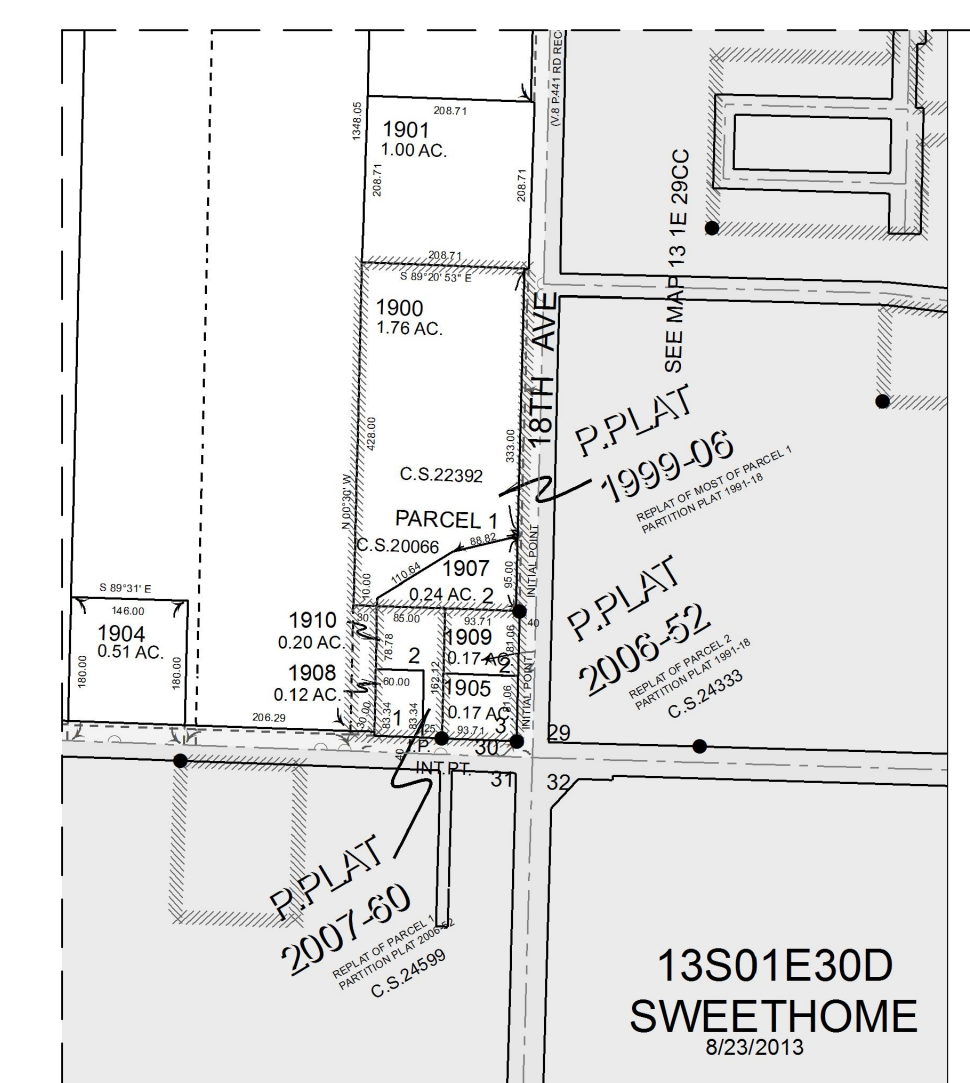


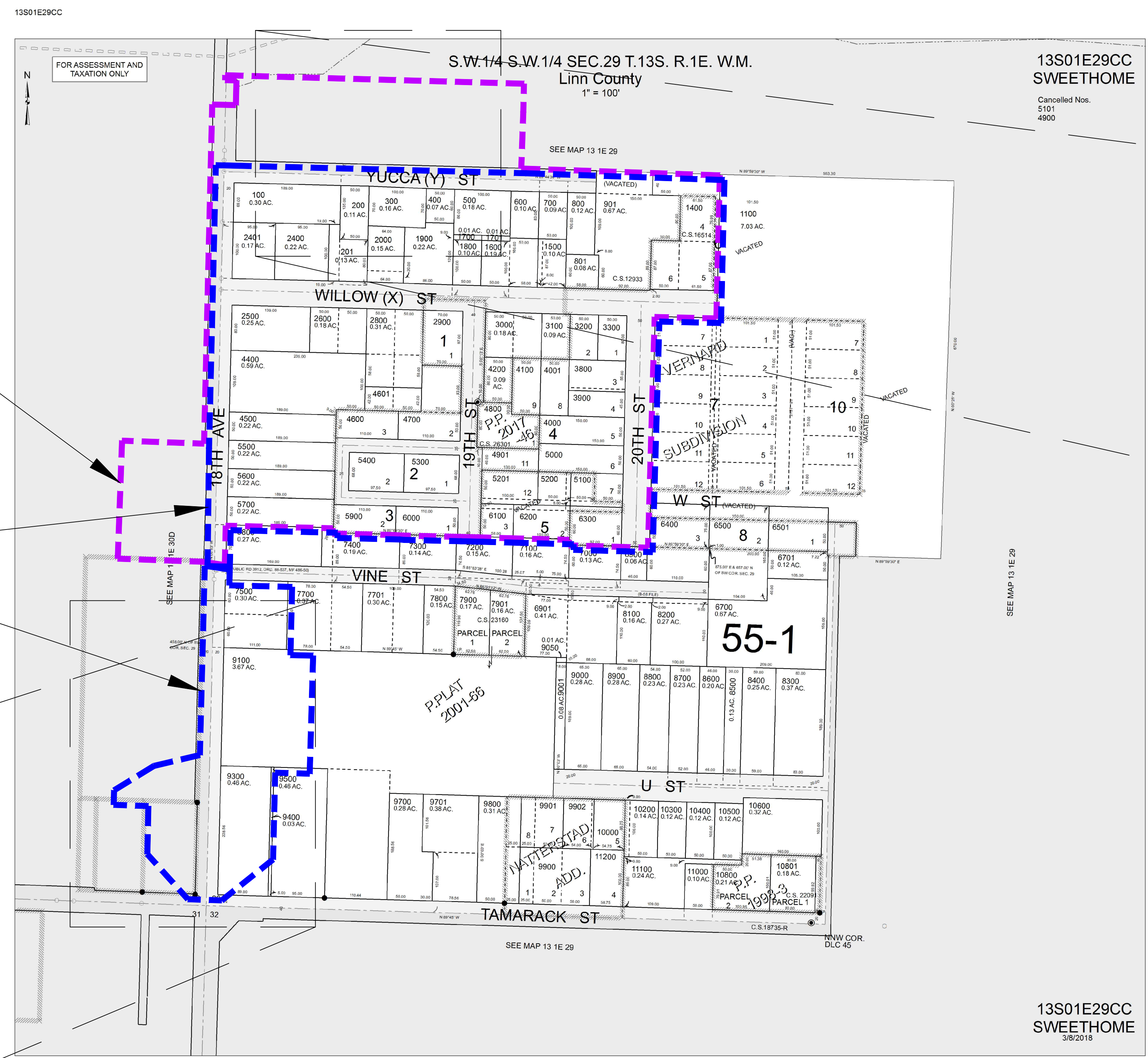
Proposed Water Local Improvement District

Proposed Street & Sidewalk Local Improvement District

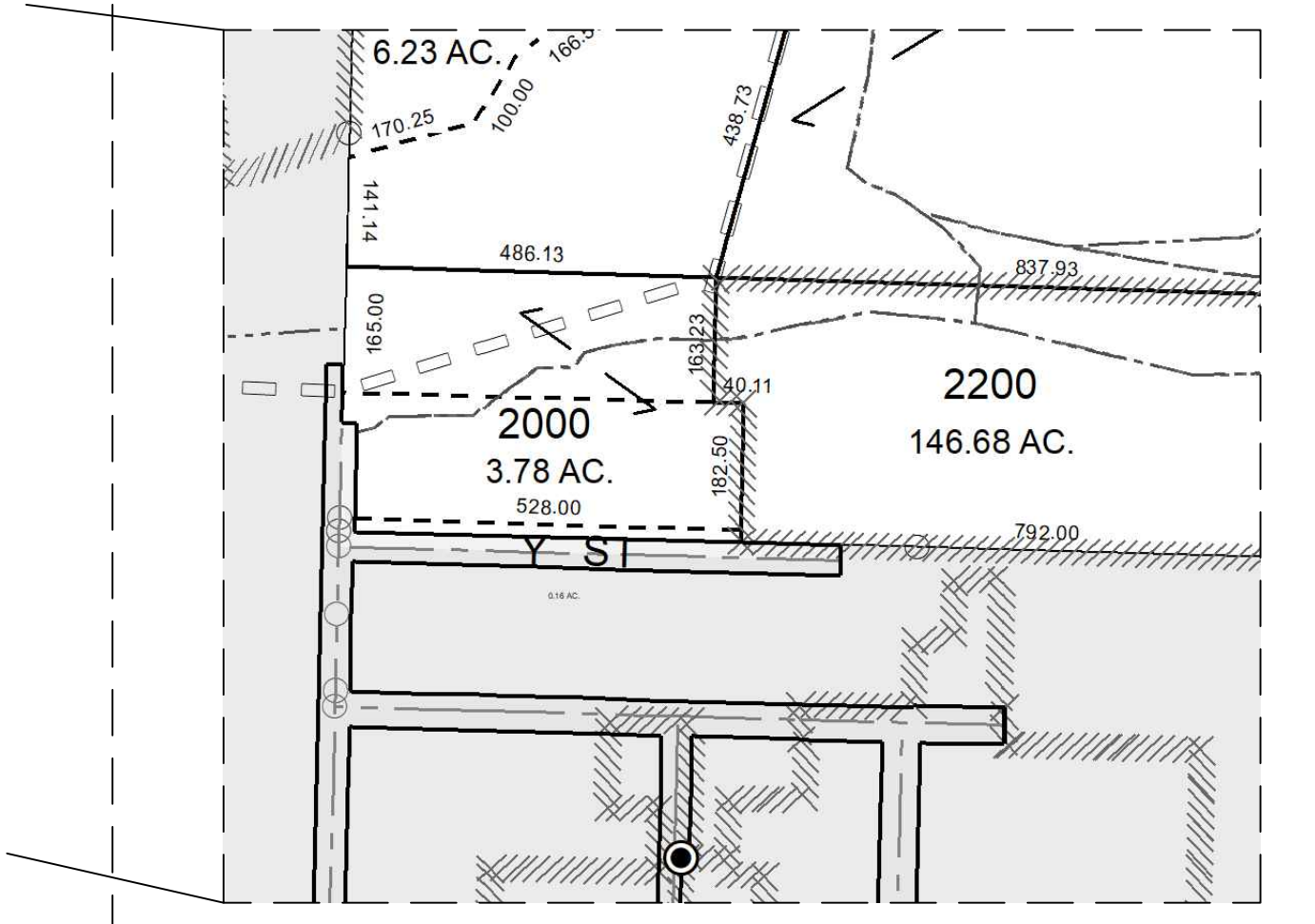


13S 01E 30D Lots 1907, 1909, 1905.
(Boundary Clipped)

13S 01E 29CC

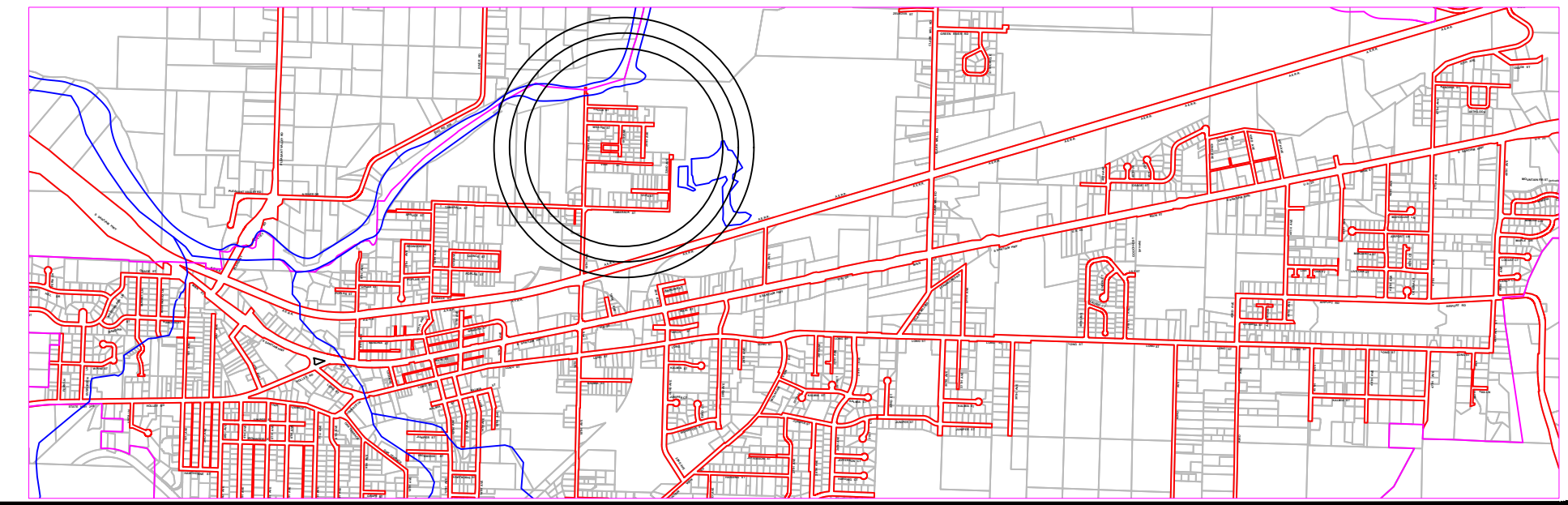


13S01E29CC
SWEETHOME
3/8/2018



13S 01E 29 Lot 2000
(Boundary Clipped)

Sweet Home Vicinity Map.



LID Area Assessor Maps
Horizontal Scale NTS



DWG No.	g:\engr\Projects\Water\18thAve-WillowSt_WaterSys\ProposedNewWaterSys.dwg		
PRINT DATE	03-05-2020		
SCALE	1" = Varies	Drawn:	
SHPW2008		Checked:	
START DATE	05-31-2019	Approved:	
		Approved:	

Rev.	Description.	Date.

CITY OF SWEET HOME, Public Works Department
Engineering Division, 1140 12th Avenue,
T:541-367-6977, F:541-367-6440

LINE IS 2 INCHES FULL SIZE
IF NOT 2" SCALE ACCORDINGLY

TITLE
Willow St Neighborhood LID
Assessor Plat Maps of Waterline & Street Improvements
18th Ave, 19th Ave, 20th Ave, Willow St, Yucca St, Tamarack St Corner.

SHEET NUMBER
1
of
4