



City of Sweet Home

Park System Plan

Park and Tree Committee Meeting #1
November 15, 2023



**CAMERON
McCARTHY**
LANDSCAPE ARCHITECTURE & PLANNING

Meeting Agenda

- Park System Master Plans and Planning Process
- City Achievements
- Demographics
- Park System Inventory
- Community Outreach
- Q&A
- Discussion

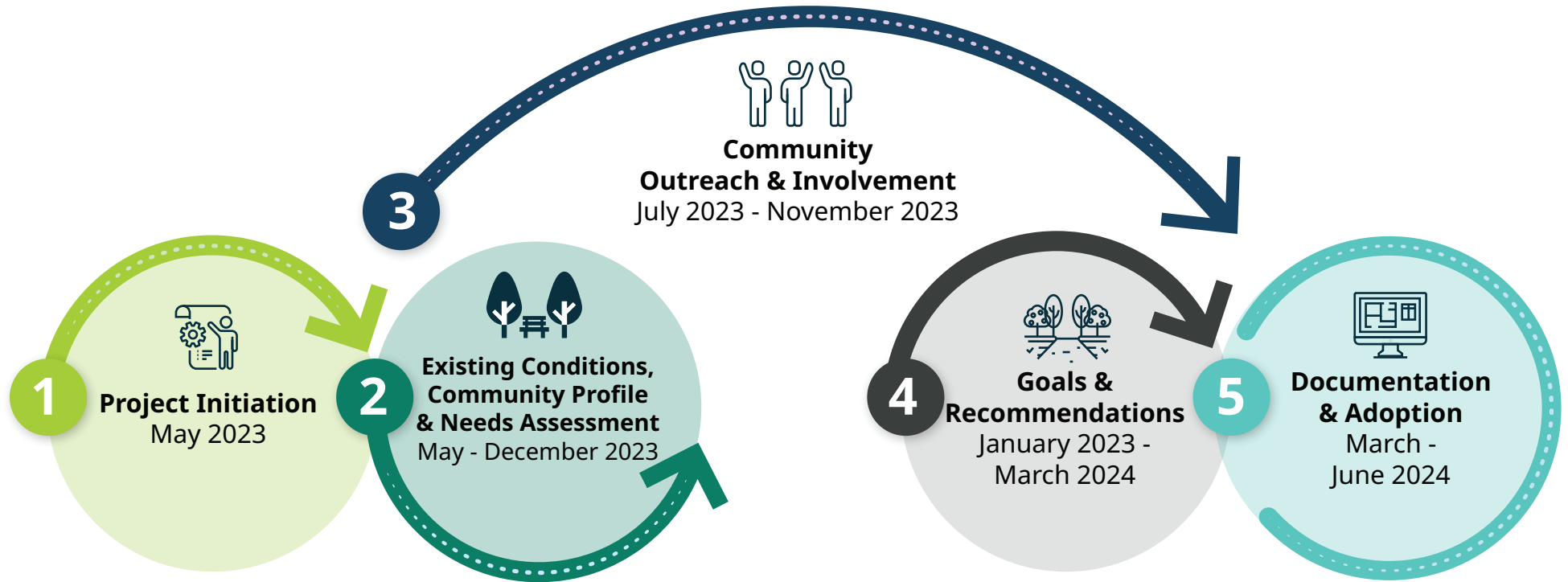


Park System Master Plans

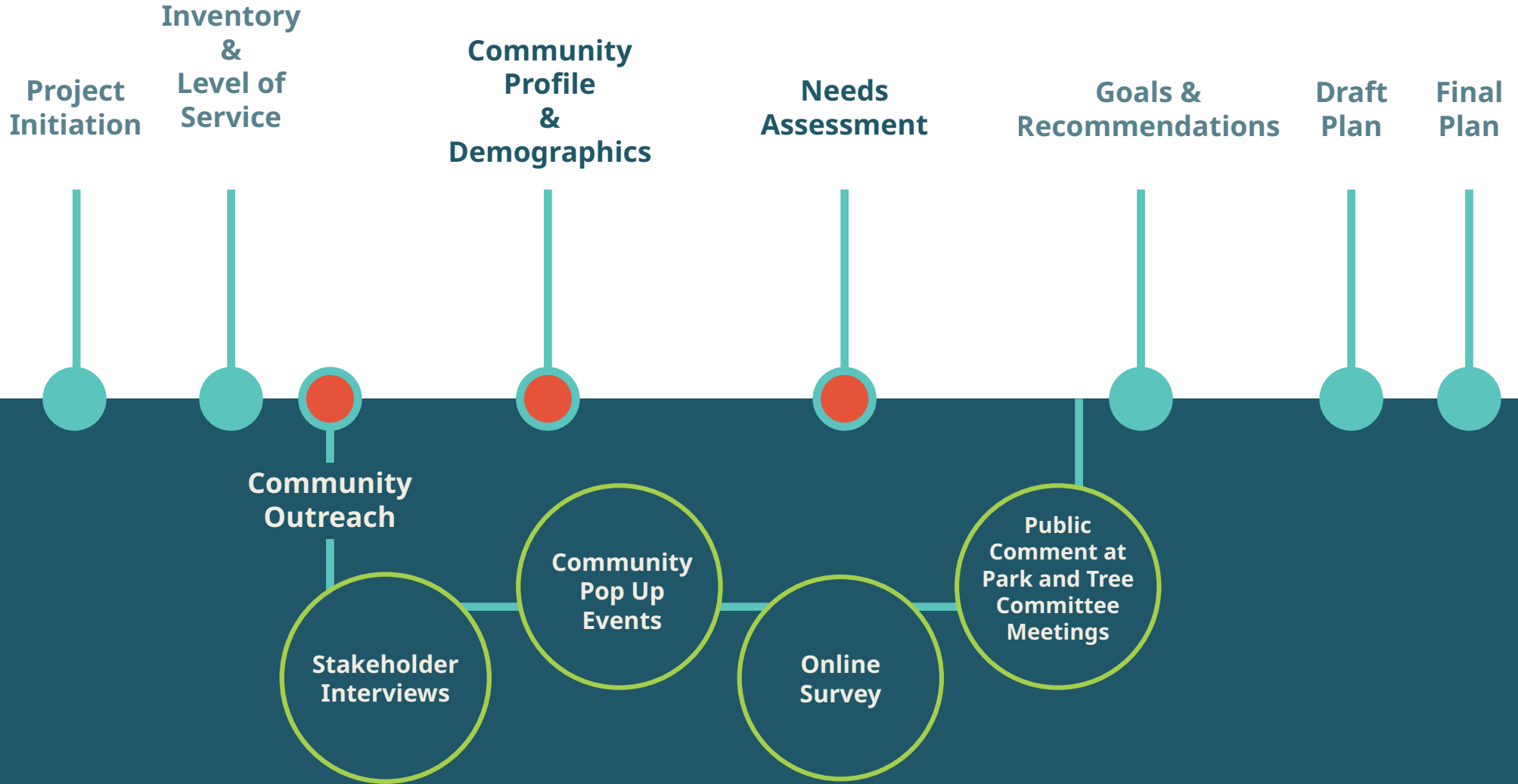
- Update City's park system vision
- Identify current and future needs
- Develop recommendations to maintain and enhance park system facilities
- Estimate project funding
- Prioritize capital improvement projects



Planning Process and Timeline



Current Phases



City and Community Achievements

- BMX improvements
- Quarry Park site
- Sankey Park improvements
 - Plaza
 - Playground
 - Benches, lighting, restrooms
- Downtown revitalization



Community Demographics

Sweet Home Historical and Future Population Forecast

Year	2010	2020	2022	2030	2040
Population	8,925	9,828	10,097	10,455	11,010

Age Distribution of Sweet Home

Age	0 to 4	5 to 19	20 to 24	25 to 44	45 to 64	65 and Over
Population	340	1,824	466	2,356	2,775	2,002

Sources:
Portland State University (PSU), Population Research Center, 2023.
United State Census Bureau, 2020.

Community Demographics

Racial Composition of Sweet Home, 2010-2020

	White	Black	American Indian	Asian	Native Hawaiian	Two or More	Some Other Race Alone
2010 Population	8,330 (93%)	23 (.3%)	120 (1%)	72 (1%)	12 (.1%)	267 (3%)	101 (1%)
2020 Population	8,470 (86%)	32 (.3%)	147 (2%)	68 (1%)	13 (.1%)	928 (9%)	170 (2%)
Percent Change	+2%	+39%	+23%	-6%	+8%	+248%	+68%

Racial Composition of Hispanic/Latino Identity in Sweet Home, 2010-2020

	Hispanic / Latino
2010 Population	418 (5%)
2020 Population	574 (6%)
Percent Change	(+37%)

Source: United State Census Bureau, 2020.

Park System Inventory

Existing Park System Sweet Home Park System Plan

LEGEND

- City Limits
- UGB
- Streets
- Railroad

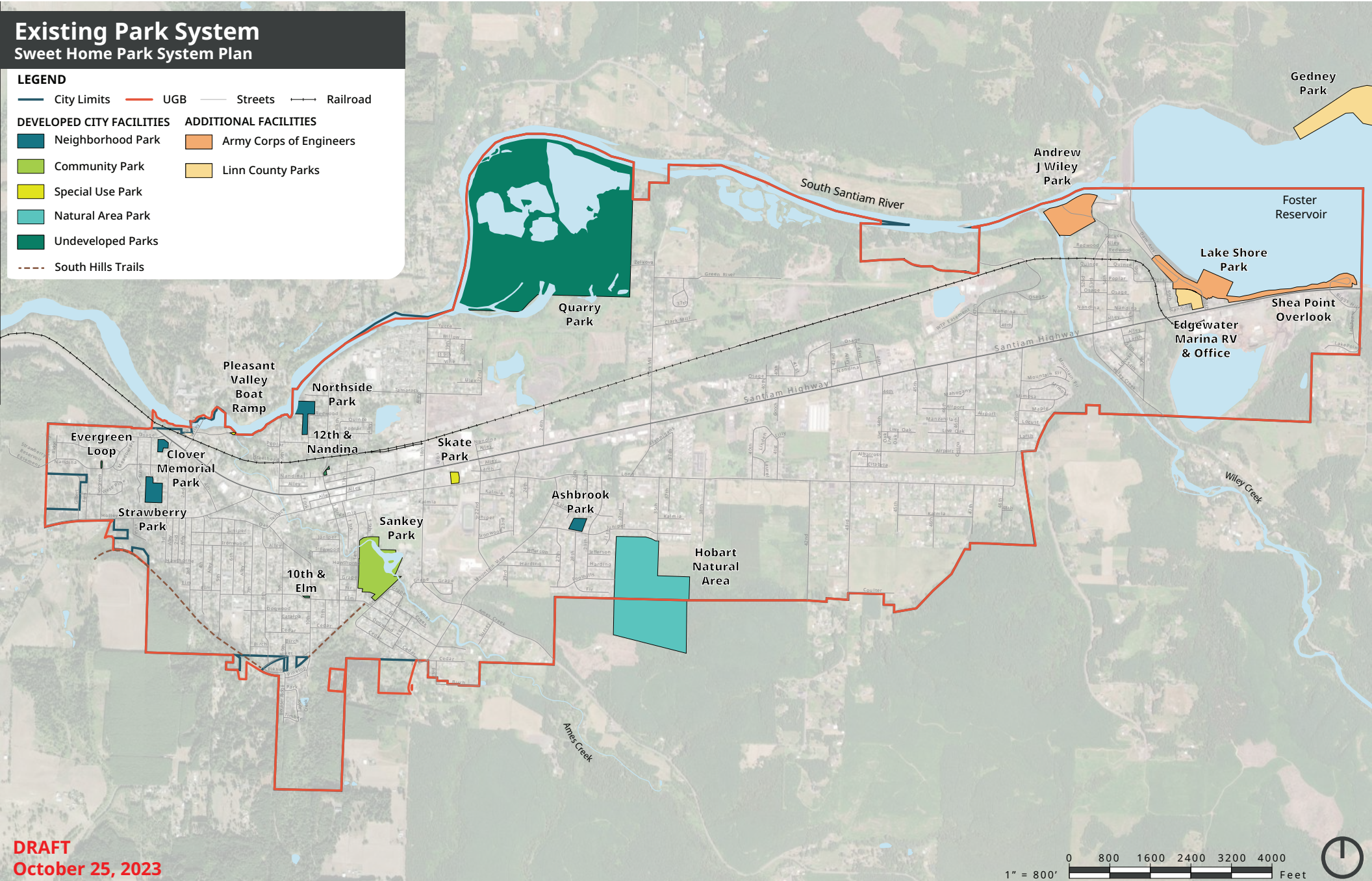
DEVELOPED CITY FACILITIES

- Neighborhood Park
- Community Park
- Special Use Park
- Natural Area Park
- Undeveloped Parks

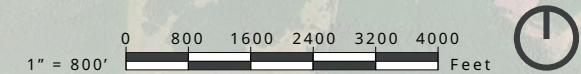
ADDITIONAL FACILITIES

- Army Corps of Engineers
- Linn County Parks

- - - South Hills Trails



DRAFT
October 25, 2023



Park System Inventory

DEVELOPED FACILITIES	
PARKS	ACRES
Community Park	
Sankey Park	17
Neighborhood Park	
Ashbrook Park	1.4
Clover Memorial Park	0.92
Northside Park	3.63
Strawberry Park	3.2
Natural Area Park	
Hobart Natural Area	59.59
Special Use Park	
Skate Park	0.81
Pleasant Valley Boat Ramp	0.18
TOTAL PARK ACRES	86.73
TRAILS	MILES
South Hills Trail	1.3
TOTAL TRAIL MILES	1.3

UNDEVELOPED FACILITIES	
PARKS	ACRES
Quarry Property	233
Evergreen Loop	0.2
10 th & Elm	0.14
12 th & Nandina	0.12
TOTAL PARK ACRES	233.46



Community Outreach Approach

Stakeholder Interviews

- Park and Tree Committee
- Beautification Committee
- Sweet Home Senior Center
- Local business, Steelhead Fitness
- Local business, Casa de Reyes
- City Manager
- Boys and Girls Club of the Greater Santiam

Community Pop Up Events

- Library Summer Reading Program
- Harvest Festival

Online Survey

- Published September 27
- In progress



Stakeholder Interviews

Online Survey

Community Pop Up Events

Public Comment at Park and Tree Committee Meetings

Community Outreach Stakeholder Interviews

Key Findings

- **Park improvements**
Update structures, inclusive play, parking, wayfinding and signage, gathering/event spaces, water recreation, community facility, youth and adults amenities, Quarry Park development, trail system
- **Increased number of parks**
- **Increased maintenance**
- **Accessibility**
ADA trails and sidewalks to and within parks
- **City communications and relationship with the local community**



Community Outreach

Summer Reading Pop Up Event

Participants primarily included parents/guardians and children

Key Findings

Most Popular Park Amenity Categories

- Water play (splash pad)
- Children's playgrounds
- Nature playgrounds
- Paved trails
- Water recreation



Community Outreach

Harvest Festival Pop Up Event

Participants included adults, parents/guardians and children

Key Findings

Most Popular Park Amenity Categories

- Water play (splash pad)
- Water recreation
- Mountain biking trails
- Unpaved trails
- Bike park.



Community Outreach

Pop Up Event - Combined Results

Participants were primarily parents/
guardians and children

Key Findings

Highly Important Park Amenities

- Water play (splash pad)
- Water recreation
- Unpaved trails
- Mountain biking trails
- Bike park
- Nature playground
- Dog park
- Children's playground

Quarry Park Development Ideas

- Hiking trails/trails
- Campgrounds
- Playground
- Water fountain
- Bike trails and dog park

Areas in Need of Parks

- East side of town

Barriers to Park Access

- Feeling unsafe or unwelcome
- Lack of facilities

Top Park System Priorities in the Next 10 Yrs

- Upgrading existing facilities and equipment
- Building parks in neighborhoods not highly served by parks

Q & A



Discussion

Is there key information about the park system and park improvements that haven't been identified in our outreach findings?



Discussion

Are there any inventory or outreach findings you want to elaborate on?

- Highly important park amenities
- Quarry Park development ideas
- Areas of town in need of parks
- Barriers to park access
- Top park system priorities in the next 10 years



Discussion

What challenges are associated with these findings?

