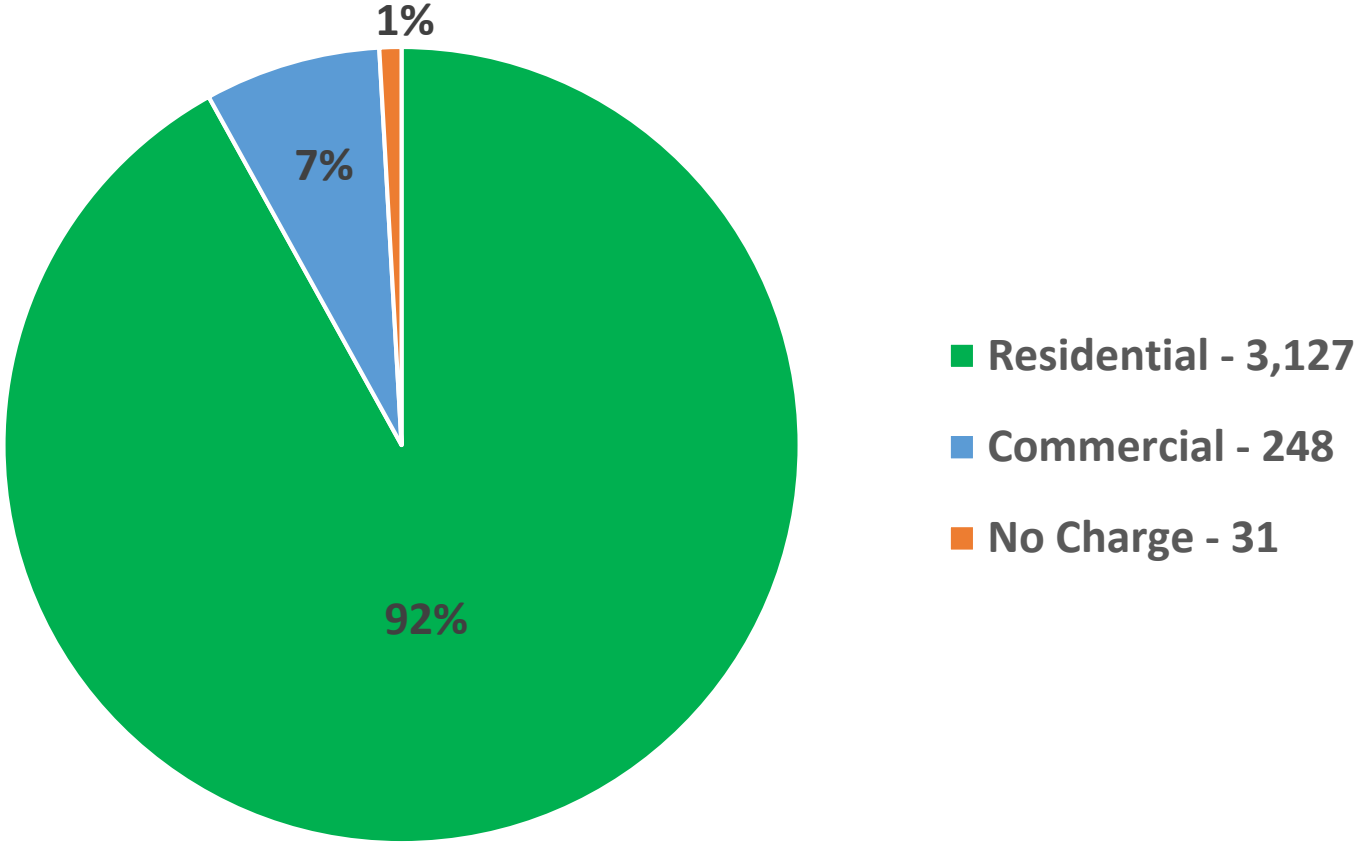




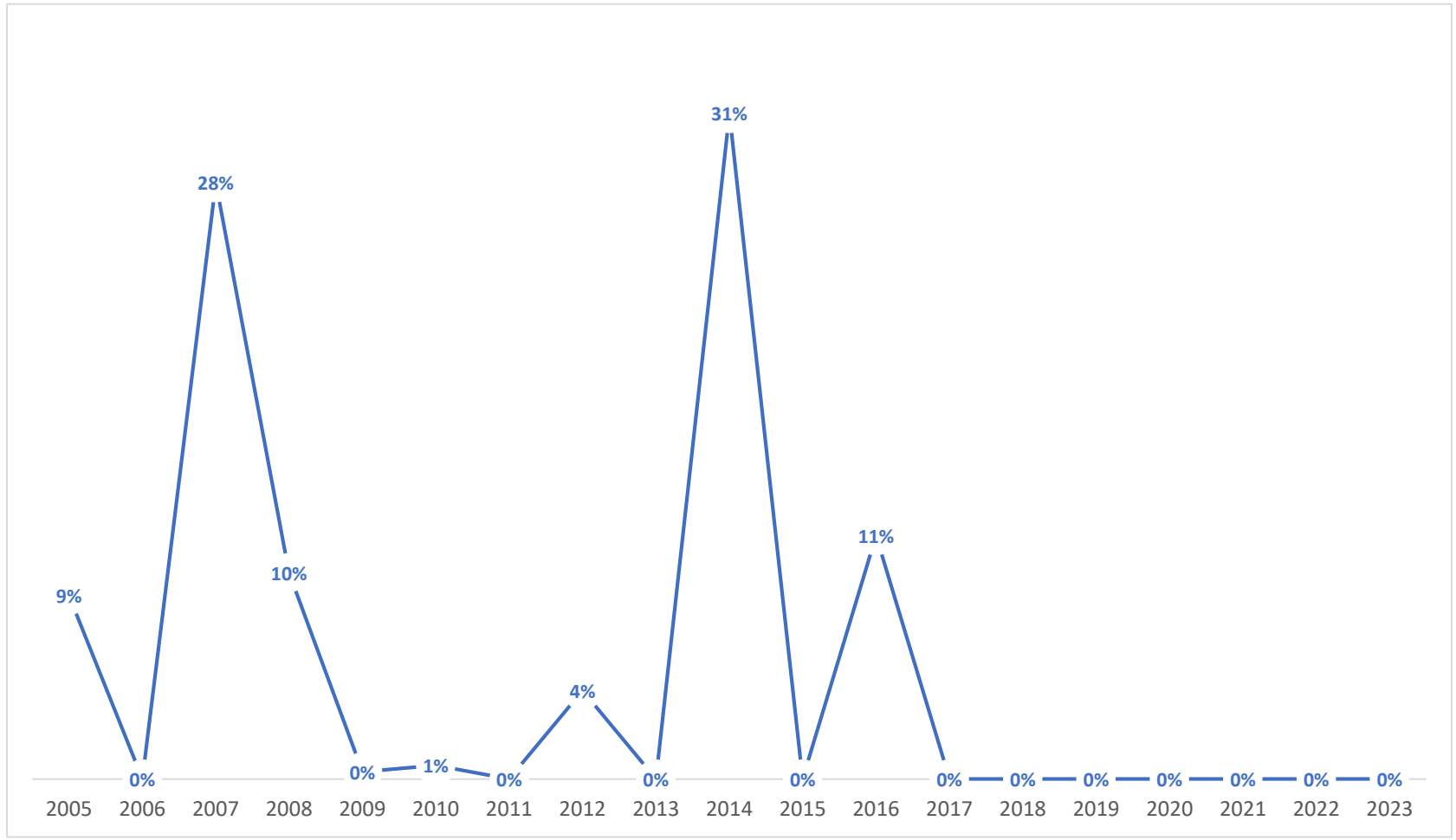
SWEET HOME OREGON

June 2023 Sewer Rate Study

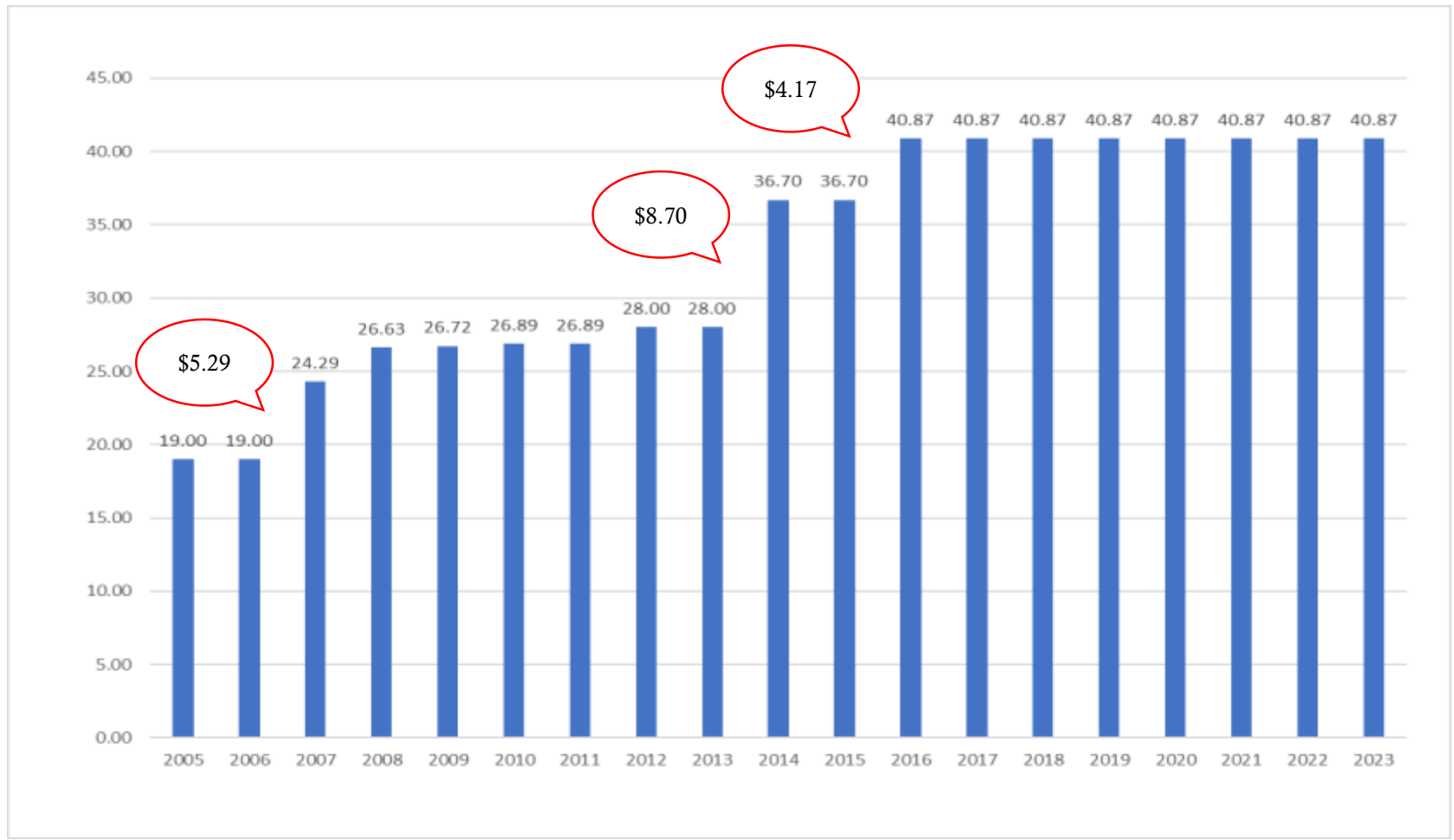
CUSTOMER PROFILE



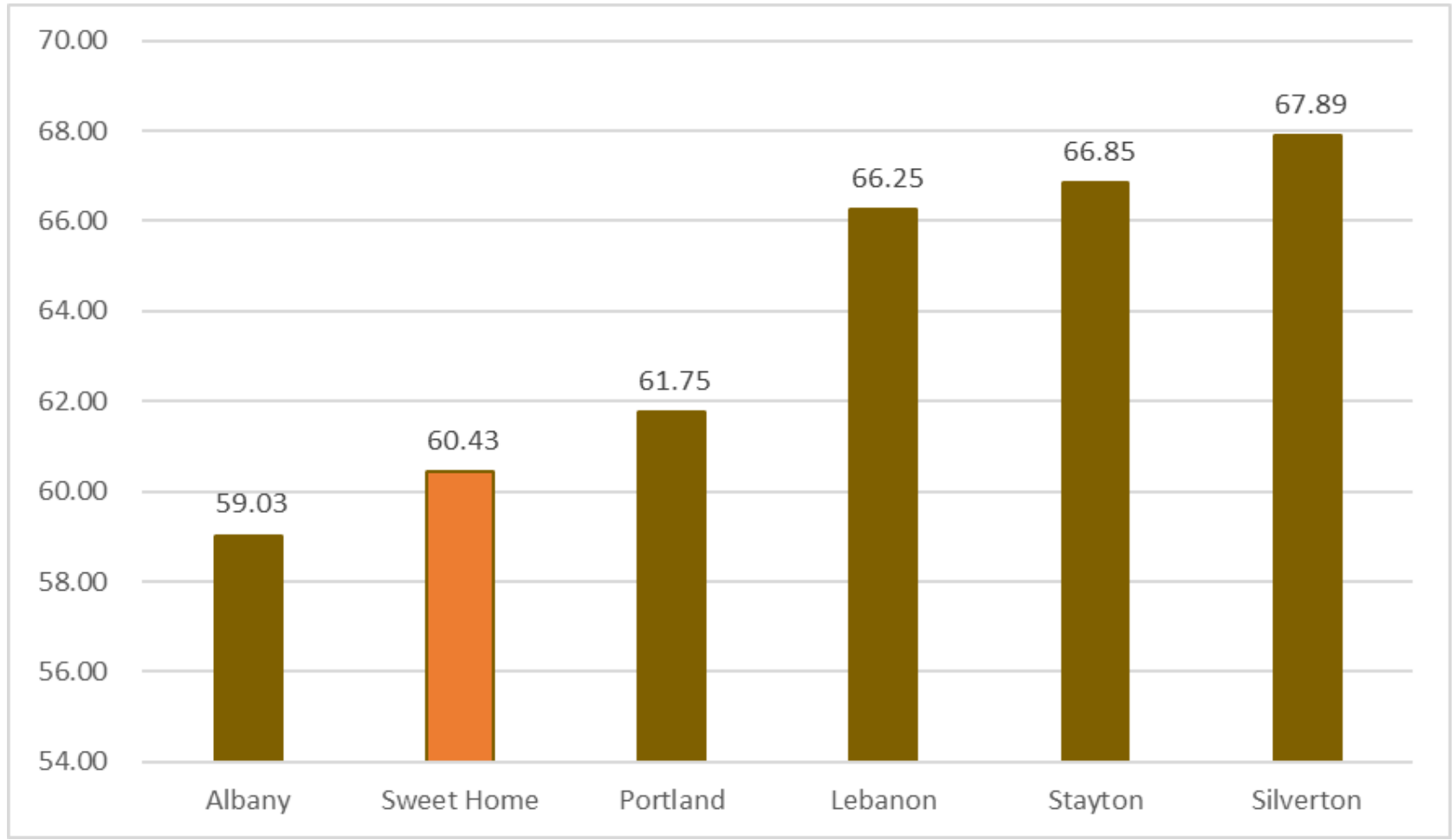
RATES OVER TIME (RESIDENTIAL CUSTOMERS)



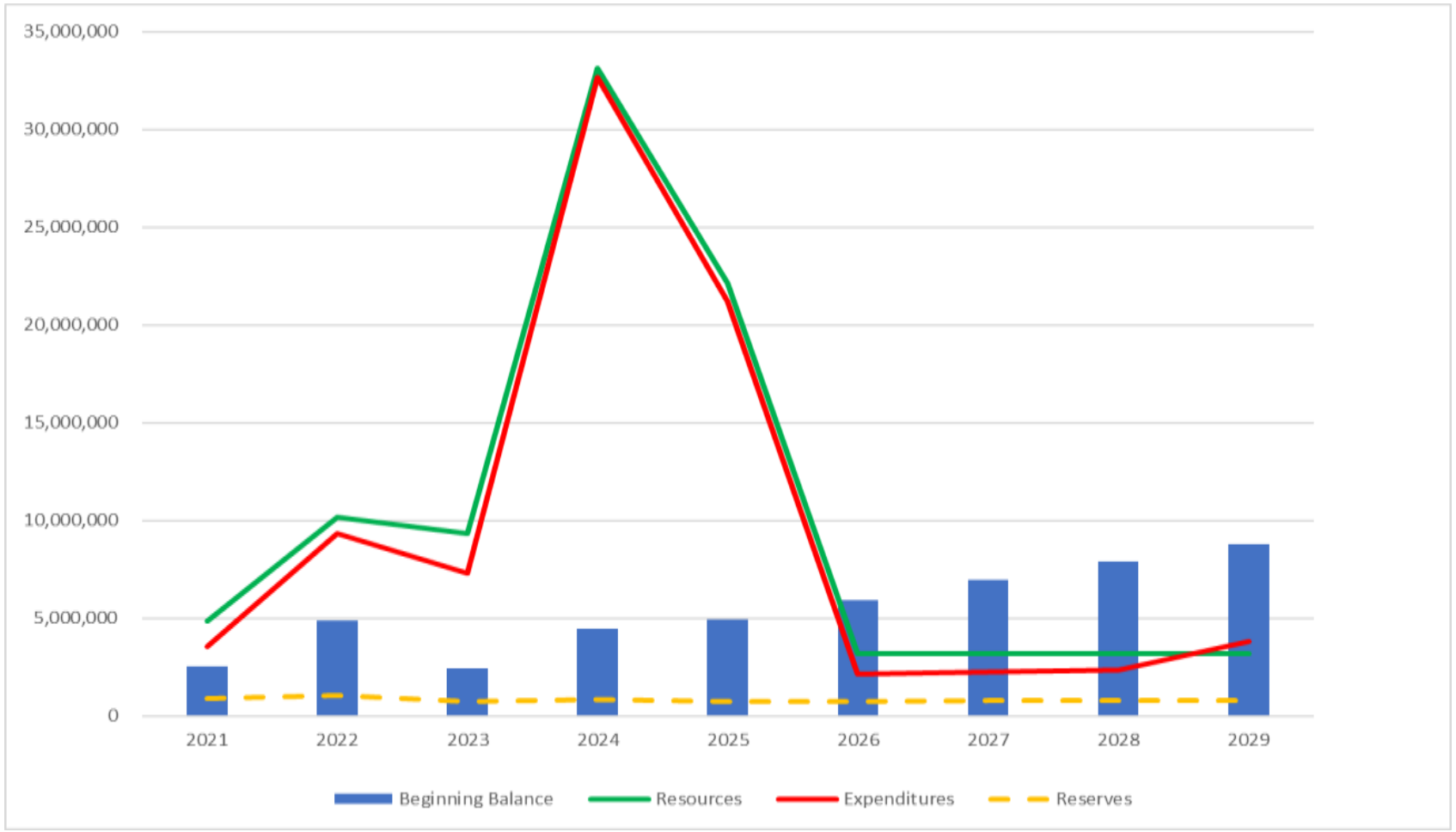
RATES OVER TIME (RESIDENTIAL CUSTOMERS)



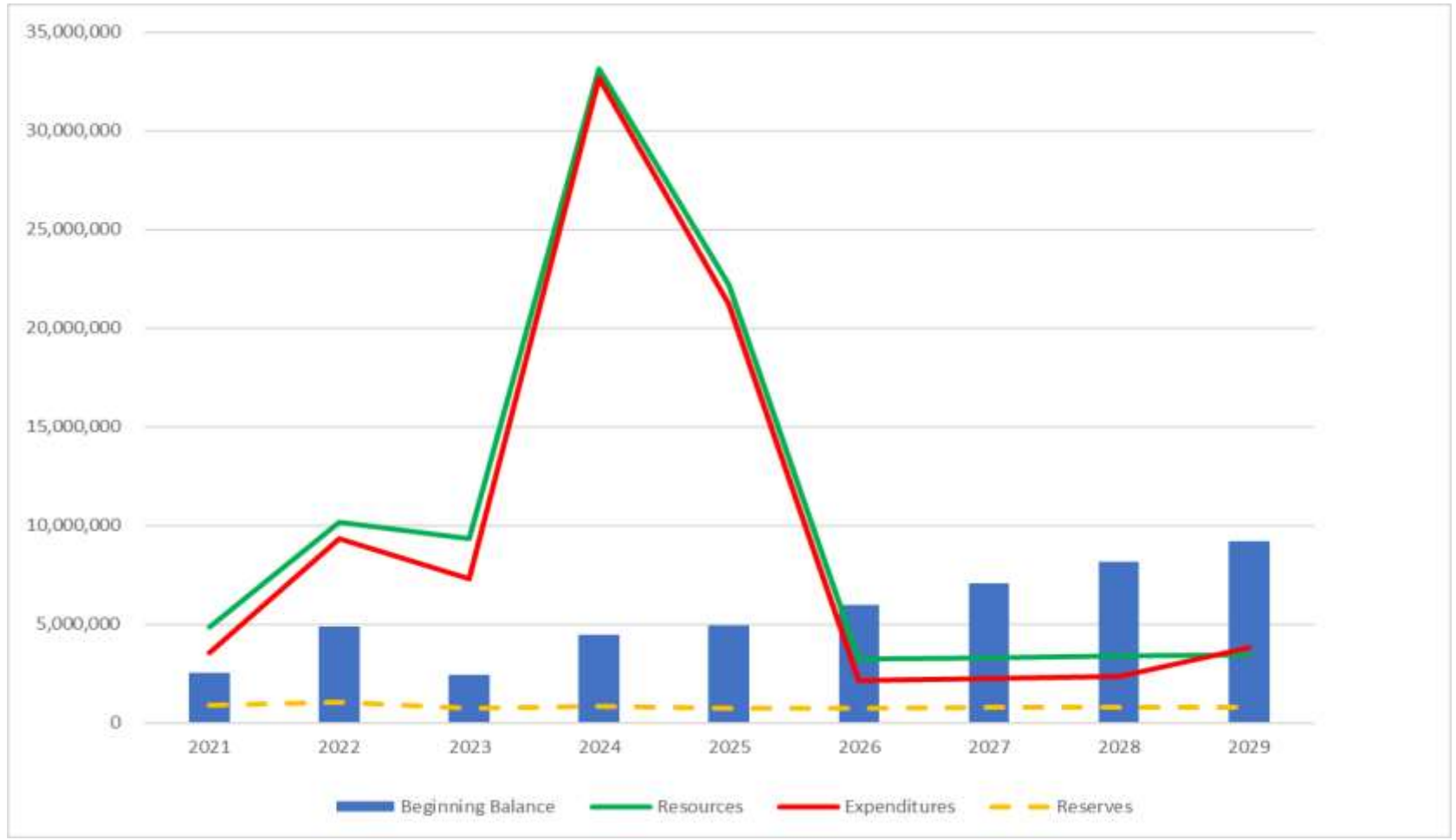
RATE COMPARISON – AVG. RESIDENT



FORECASTING THE FUTURE – STATUS QUO



FORECASTING THE FUTURE – 2% YEARLY



60.43 60.43 60.43 61.64 62.87 64.13 65.41 66.72 68.05

SEWER RATE STUDY - RECOMMENDATIONS

1. Update Capital Improvement Plan every 5 Years.
This can be paid for by your SDC Sewer fees.
2. Review forecast every year.
3. Resolution to raise Wastewater (Sewer) fees
 - Recommend 2% on base & consumption fees
(Roughly \$1.21 increase Sewer fees)
 - Rates effective January 2024 billing cycle

