



Quote

The Automation Group, Inc.

www.tag-inc.us

CCB #172838

Phone: 541-359-3755

Quote #221119G

Jan. 24, 2023

Trish Rice
City of Sweet Home

RE: Sweet Home WWTP - Owner Supplied Equipment

Project Scope:

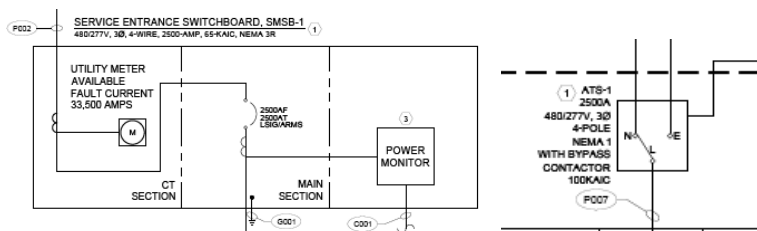
TAG is providing a Quote to supply the following materials for early procurement due to long lead times for the Waste Water Treatment Facility Project.

Fee Schedule:

<u>Task</u>	<u>Qty</u>	<u>Price Each</u>	<u>Markup</u>	<u>Calc Price</u>
-	-	-	-	-
			5% overhead 10% Markup	
Switch Gear & ATS	1	\$418,480.00	15.00%	\$481,252.00
Generator	1	\$276,947.83	15.00%	\$318,490.00
Original Design/Bidding	102	\$150.00	0.00%	\$15,300.00
Rebid Nov.	32	\$150.00	0.00%	\$4,800.00
Rebid Dec.	30	\$150.00	0.00%	\$4,500.00
TAG Admin/PM - During Construction - Switch Gear & ATS	50	\$159.00	0.00%	\$7,950.00
TAG Admin/PM - During Construction - Generator	40	\$159.00	0.00%	\$6,360.00
Subtotal				\$838,652.00
Owner Controlled Contingency (4%)	1	\$159.00	4.00%	\$33,546.08
Subtotal	0			\$872,198.08
Performance and Payment Bonds (3%)	1	\$159.00	3.00%	\$26,165.94
		Total		\$898,364.03

1. Switch Gear & ATS:

- SMSB-1, MSB-1 & ATS-1— per Electrical Engineers 1-line below





2. Generator:

- Cummins
 - DQFAC, Commercial Diesel Generator Set, 900kW Standby 60Hz
 - U.S. EPA, Stationary Emergency Application
 - 900DQFAC, Diesel Genset, 60Hz, 900kW
 - Duty Rating - Standby Power (ESP)
 - Emission Certification, EPA, Tier 2, NSPS CI Stationary Emergency
 - Fuel Tank - Sub Base, 1500 Gallon, UL142 Compliant
 - Compliance - Fuel Tank
 - Listing, ULC - S601 - 07
 - Listing - UL 2200
 - Alarm - High Fuel Fill
 - Fuel Tank Connection - Dual Stub Up
 - Control Mounting - Left Facing
 - PowerCommand 3.3 Controller, Paralleling Capable
 - Analog Meters - AC Output
 - LCD Control Display



Quote

- Stop Switch - Emergency, Externally Mounted
- Signals - Auxiliary, 8 Inputs/8 Outputs
- Relays - Paralleling Circuit Breaker Control
- Control Display Language - English
- Circuit Breaker or Entrance Box or Terminal Box - Left Only
- Circuit Breaker - 1600, Left, 3P, UL 600, IEC 415, UL Serv Ent 100%
- Circuit Breaker or Entrance Box or Terminal Box, Right-None
- Cert - Seismic, IBC2000, IBC2003, IBC2006, IBC2009, IBC2011
- Bottom Entry, Left
- Load Connections-None
- Indication - Ground Fault, Terminal Box (or) Circuit Breaker Box - Left
- Engine Air Cleaner - Normal Duty
- Engine Cooling - Radiator, Enhanced High Ambient Air Temperature, Ship Fitted
- Shutdown - Low Coolant Level
- Sight Glass - Coolant Level
- Coolant Heater - 208/240/480 Volts AC, 40F Minimum Ambient Temperature
- Voltage - 277/480, 3 Phase, Wye, 4 Wire
- Test Record - Strip Chart
- Test Record - Safety Shutdowns
- Cummins Certified Test Record
- Standby 5 Year 2500 Hour Parts+Labor+Travel
- Alternator - 60Hz, 3 Phase, Wye, Extended Range, 105/80C
- Literature - English
- Packing - None, Base Mounted Housing
- Alternator Heater, 120 Volt AC
- Steel Sound Attenuated Level 2 Enclosure, with Exhaust System
- Enclosure Color - Green, Steel
- Vibration Isolators - Earthquake Certified
- Cooling Air Outlet - Horizontal, Sound Attenuated
- Battery Group34: C34-HC
- Battery Charger-10Amp, 120/208/240VAC, 12/24V, 50/60Hz 1
- Telematics – Cloud - Wi-Fi + Cellular + Ethernet connectivity – Modbus + J1939 (Private – NA variant)
- Startup Service and 4-Hr Load Bank Test, Demonstration and Testing

- **Bidding area comparisons Raw Cost Materials**

Generator	Cost \$	Lead Times
MTU - 1000kw	\$299,785.00	70-80 Weeks
Cummins - 900kw (Low Bid Selected)	\$276,947.83	58-68 Weeks
Cat - 1000kw	\$429,926.00	70-80 Weeks
Kohler - 900kw	\$320,871.00	58 Weeks



Quote

Clarification/Exclusions:

- Off loading by Owner or General Contractor
- Generator Fuel to be Provided by City
- Lead Times for specific materials are very unpredictable at this time and cannot be verified until orders are placed. We are also seeing some items slipping from the predicted delivery dates after order by a few weeks and also seeing some items showing up early. TAG will track progress on orders and provide updates.
- Payments with Credit Cards will have additional charges added to the price below based on the current % rate of the processor.

Thank you,

Gary Jenks

Gary Jenks

(541) 912-3766

gjenks@tag-inc.us

TAG standard terms apply
