

October 8, 2024

Chief Ogden
Sweet Home Police Department
1950 Main St.
Sweet Home, OR 97386

Spacesaver Specialists Scope of Work

- Report Room
- Coat Room
- Dispatch Room - Window, Day Use Lockers, and Fridge/Microwave Area
- Evidence Processing Room
- Dispatch Files & Paper Tower
- Package Receiving/Mail
- Laundry Room
- Evidence Lockers
- Kitchen
- Booking

Feel free to contact me with any questions.

Sincerely,
Doug Miller
Doug_miller@storageplanning.com
503-612-2609

Please note:

- Includes materials, freight, delivery, and installation per proposed layout.
- Work to be performed during normal business hours of 7:00am – 4:00pm Monday-Friday.
- Prevailing wage rates.
- Costs of permits or engineering, if needed, are not included.
- Standard terms: 35% down, 35% when materials are shipped, 30% completion of project.
- Lead time is approximately 12-14 weeks
- Cost is good for 60 days.



October 8, 2024

To: Chief Ogden
Sweet Home Police Department

Overview: Spacesaver shelving & lockers and some cabinets delivered and installed by Spacesaver Specialists at the Sweet Home Police Department purchased on the **Sourcewell Contract #110923-SPC** for member **#180222 City of Sweet Home**.

Report Room:

(2) sections of shelving (U1) @ 35-3/4" h x 48" w x 24" d with a stainless-steel countertop. Each section has (1) 4" d drawer and open area below the drawer.

(2) sections of shelving (U2) @ 85-1/4" h x 30" w x 28" d, has (5) levels with bin dividers for duty bag storage. Total of 20 openings.

Coat Room:

(1) section of shelving (U3) @ 40-1/4" h x 48" w x 20" d, has an open area for Pry Tool & Heavy-Duty Tools Storage. (1) 48" wood bench w/metal pedestal. (1) Wall mounted coat rack with 15 hooks.

Dispatch Room:

(1) section of shelving (U4) for under the pass thru window @ 32-3/4" h x 48" w x 18" d with (2) levels @ 15" h; has stainless-steel countertop.

(3) 2-tier Day Use Lockers (DU1) @ 72" h x 12" w x 18" d, each opening has a hook inside and a vent on the back. (6) 36" h total openings.

(1) shelving section (U5) @ 31-1/4" h x 36" w x 24" d with an open area below for fridge (not included), has a laminate countertop.

Evidence Processing Room:

(1) Day Use Locker (DU2) @ 32" h x 24" d x 18" w, has a digital lock for pass-back use. Includes a 4" base.

(1) section of shelving (U12) @ 36" h x 30" w x 24" d with (2) levels of open shelving.

Stainless-steel countertop over locker and shelving.

(1) section of cantilever shelving (C1) @ 42" h x 36" w x 12-3/4" d, attached to the wall, above countertop with (2) levels of shelves.



Spacesaver Specialists, Inc.

9730 SW Herman Road • Tualatin, Oregon 97062 • Tel 503.612.2600 • Toll free 800.456.2066 • Fax 503.612.2614

General Contractor, OR: 88704 • WA: SPACESI110JO

www.storageplanning.com

Dispatch Files:

(2) sections of shelving (U6) @ 35-3/4"h x 42"w x 24"d, with (1) 6" drawer with front to back dividers & (2) 12" drawers for front to back filing.

(2) sections of shelving (U7) @ 35-3/4"h x 42"w x 24"d, with (1) 4-1/2"h drawer with front to back dividers & (2) open shelves below for general storage, locking doors attached to front.

14 ft. laminate countertop on top of U6 & U7 sections.

(1) section of shelving @ 83-3/4"h x 30"w x 18"d with (6) level of shelving for paper storage, has a locking door,

Mail Room Area:

(2) sections of shelving (U9) @ 35-3/4"h x 36"w x 24"d with 2 open shelves. Laminate countertop

Laminate mail slots on shelving @ 42"h x 71-1/2"w x 12-7/8" d, has 30 shelves.

Laundry Room:

(1) section of shelving (U10) @ 83-3/4"h x 36"w x 18"d with 5 levels and a locking door.

Evidence Locker Room:

(2) Spacesaver Non-Pass-Thru Evidence Lockers with various sizes of openings.

(E1) 1-full height with (6) openings.

(E2) 1-full height with (12) openings, (1) opening with a mail slot & (3) openings with USB power.

Kitchen:

Laminate cabinets as per drawing.

Booking:

Laminate cabinets as per drawing.

Total Spacesaver Costs

\$103,138.00

Spacesaver Specialists, Inc.

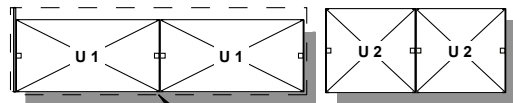
9730 SW Herman Road • Tualatin, Oregon 97062 • Tel 503.612.2600 • Toll free 800.456.2066 • Fax 503.612.2614

General Contractor, OR: 88704 • WA: SPACES1110JO

www.storageplanning.com

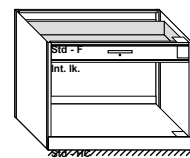


Room: Report Room



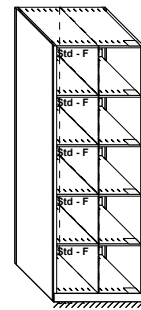
SS Countertop

H35 3/4"
35 3/4" x 48" x 24"



U1
Shelving Under
Countertop

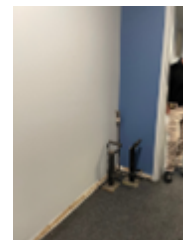
H85 1/4"
85 1/4" x 30" x 28"



U2
Duty Bag Storage

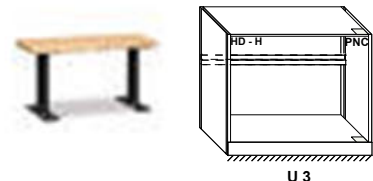
Room: Coat Room

Wall Mounted Coat Rack with 15 hooks. (not shown here)



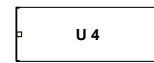
48" Wood Bench w/metal pedestal.

H40 1/4"
40 1/4" x 48" x 20"



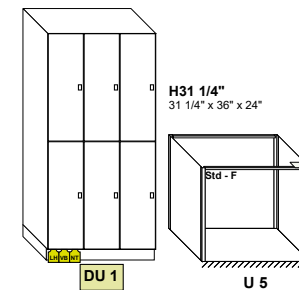
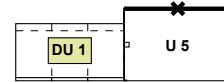
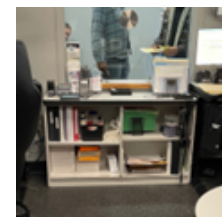
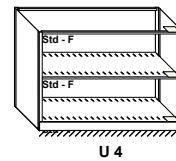
Open shelving for Pry Tool and Heavy Duty Tools

Room: Dispatch



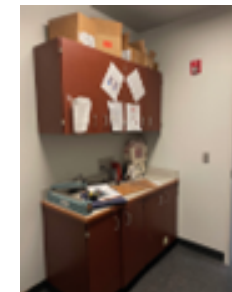
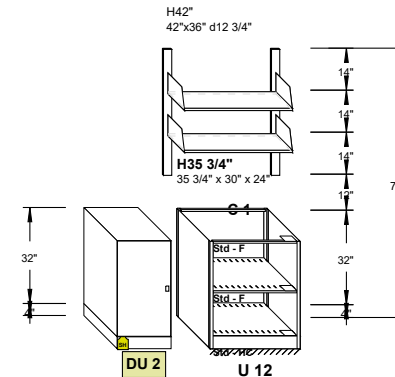
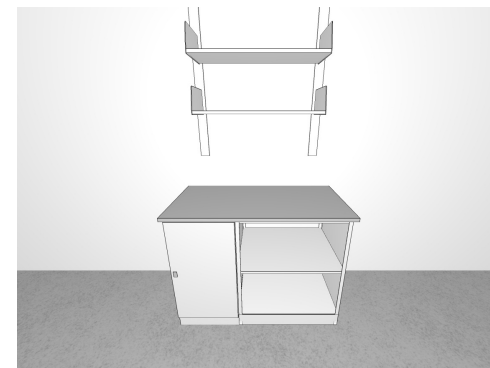
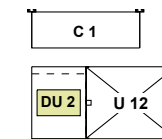
Open shelving for under the window

H32 3/4"
32 3/4" x 48" x 18"



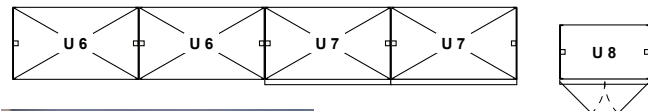
6 Day Use Lockers & open shelving for fridge under counter and microwave on top.

Room: Evidence Processing Work Station



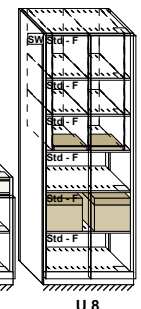
Room: Dispatch Files

Metal shelving with drawers for hanging files & misc. storage w/laminate countertop.



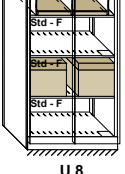
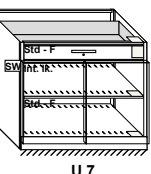
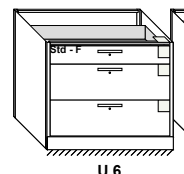
Metal shelving paper tower w/locking door.

H83 3/4"
83 3/4" x 30" x 18"



H35 3/4"
35 3/4" x 42" x 24"

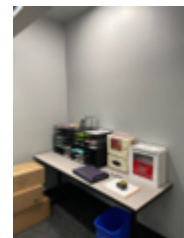
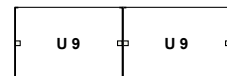
H35 3/4"
35 3/4" x 42" x 24"



U6
File Cabinets

U7
Shelving w/locking doors.

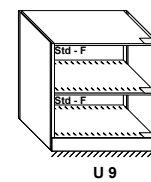
Room: Mail



Open shelving with laminate countertop

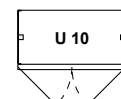
Laminate mail slots above shelving (not shown).

H35 3/4"
35 3/4" x 36" x 24"

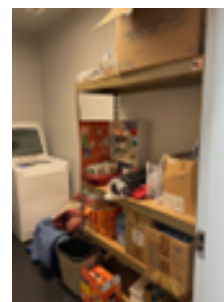
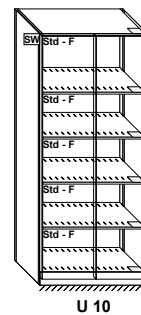


Room: Laundry Cabinet

Metal shelving w/locking doors for laundry room storage.

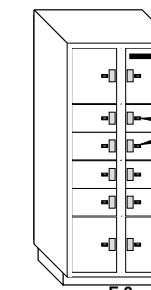
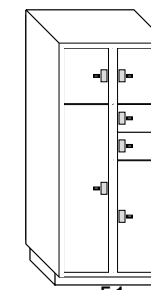
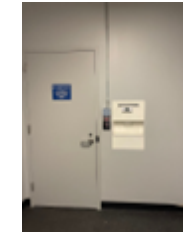


H83 3/4"
83 3/4" x 36" x 18"



Room: Evidence Processing

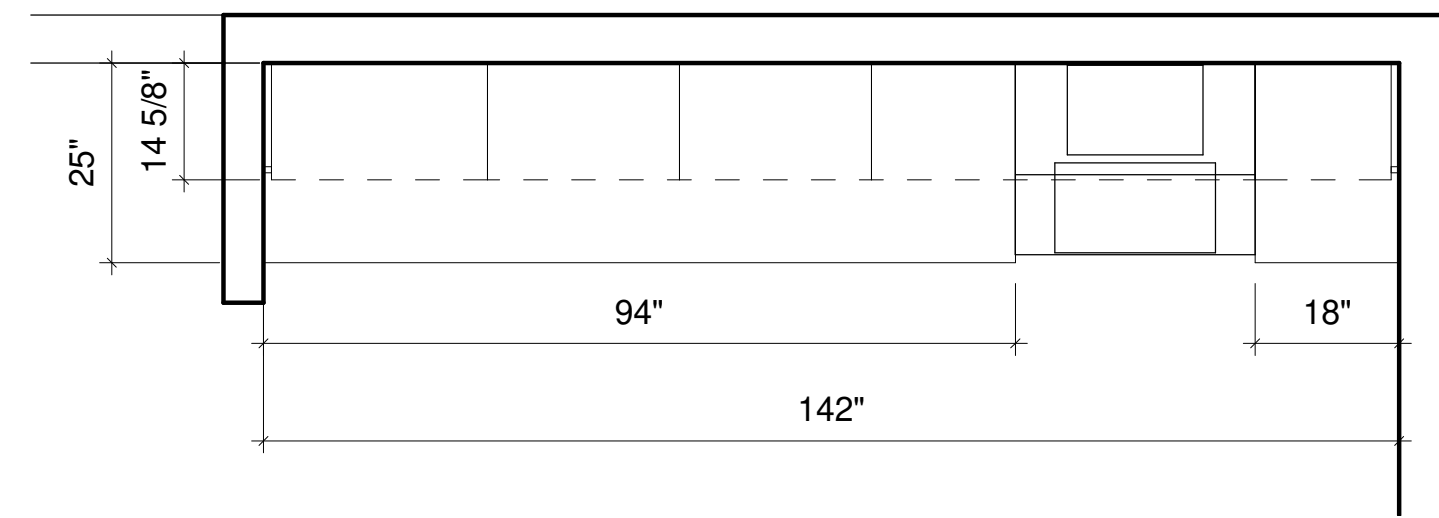
Non Pass-Thru Evidence lockers with (1) mail slot & (2) openings with USB power.



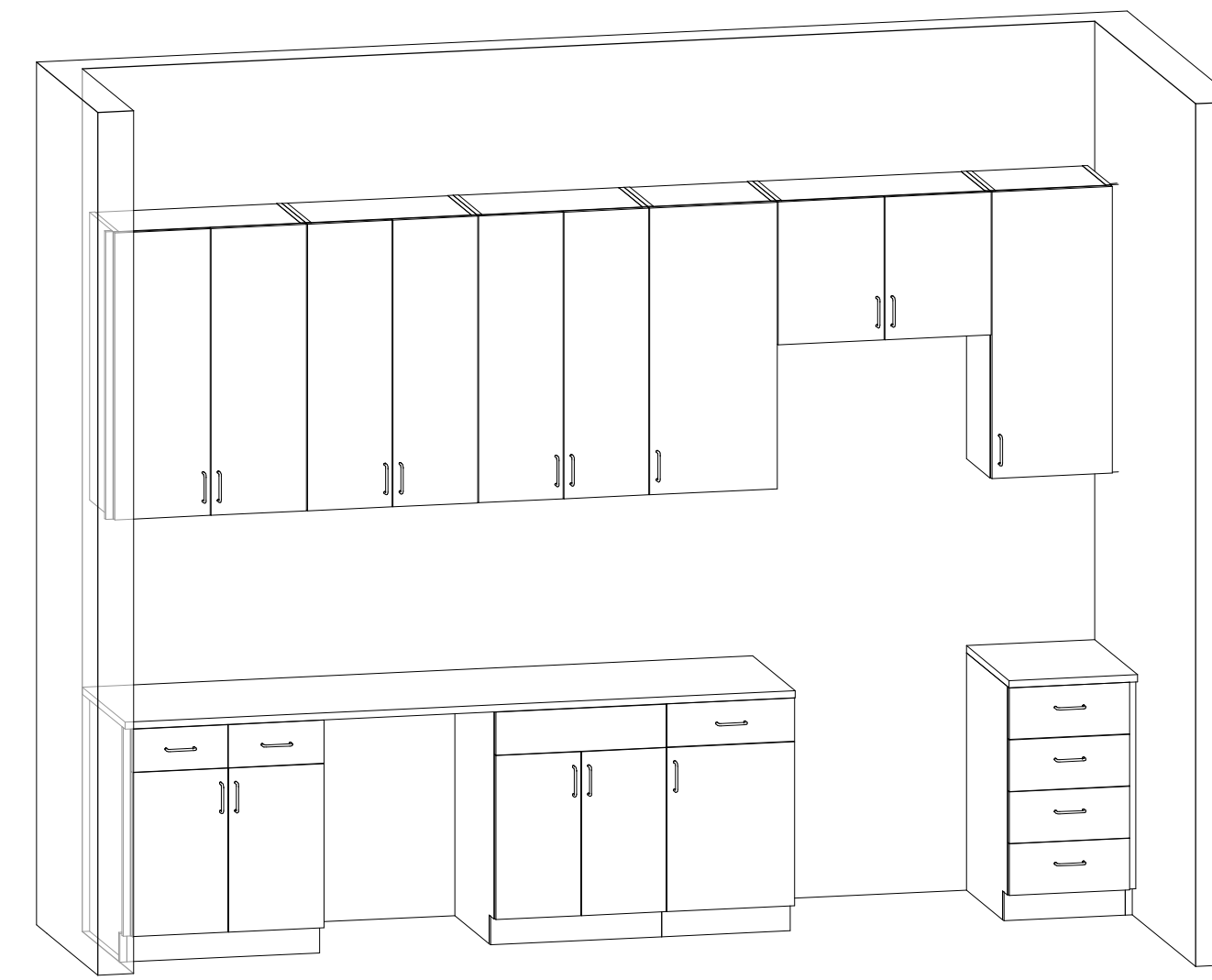
E1

E2

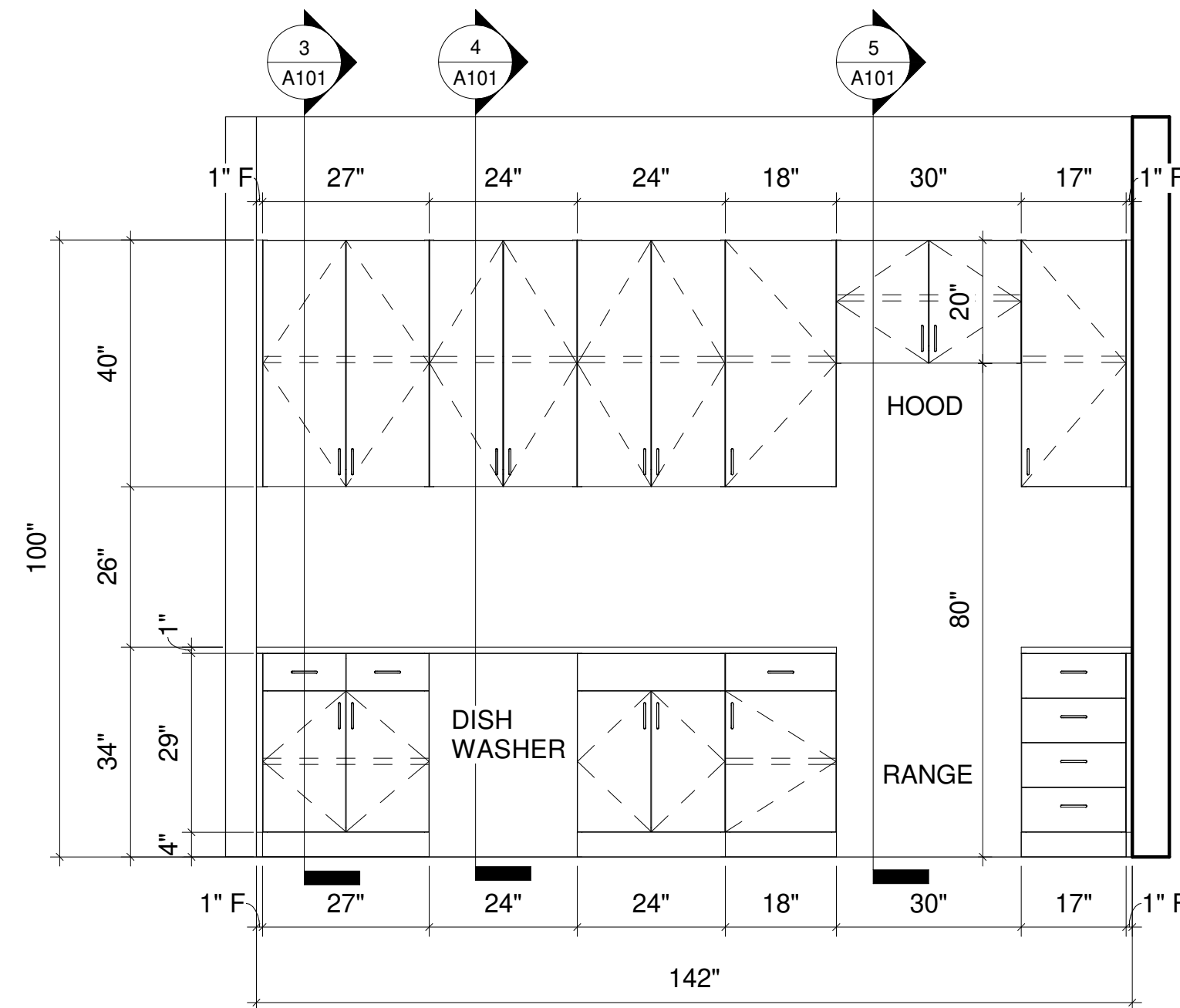
REV	DESCRIPTION	DATE
1	For Review	06/27/2024



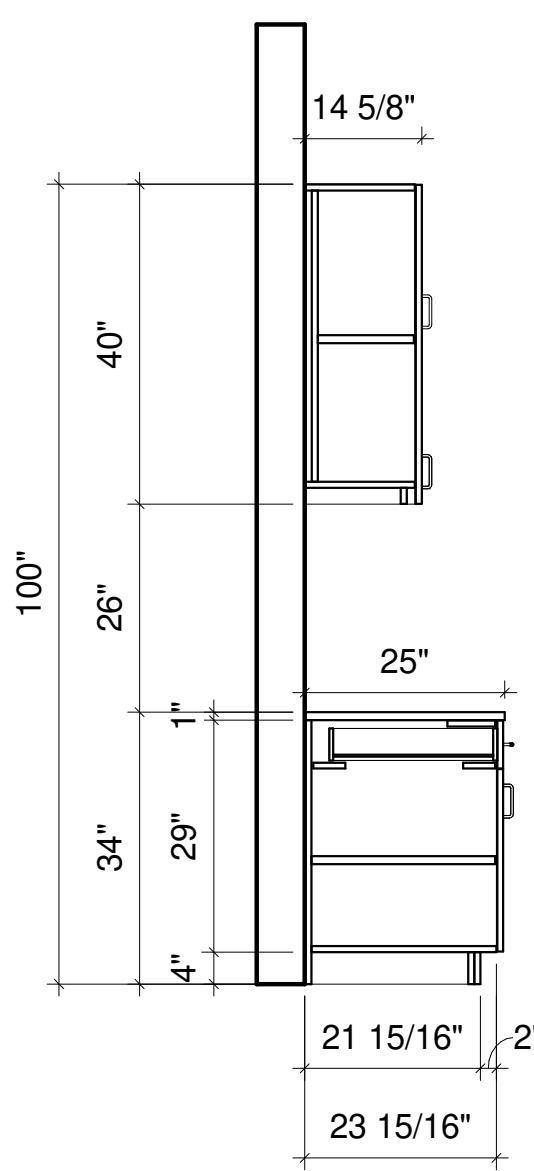
1 Level View - Kitchen
A101 1/2" = 1'-0"



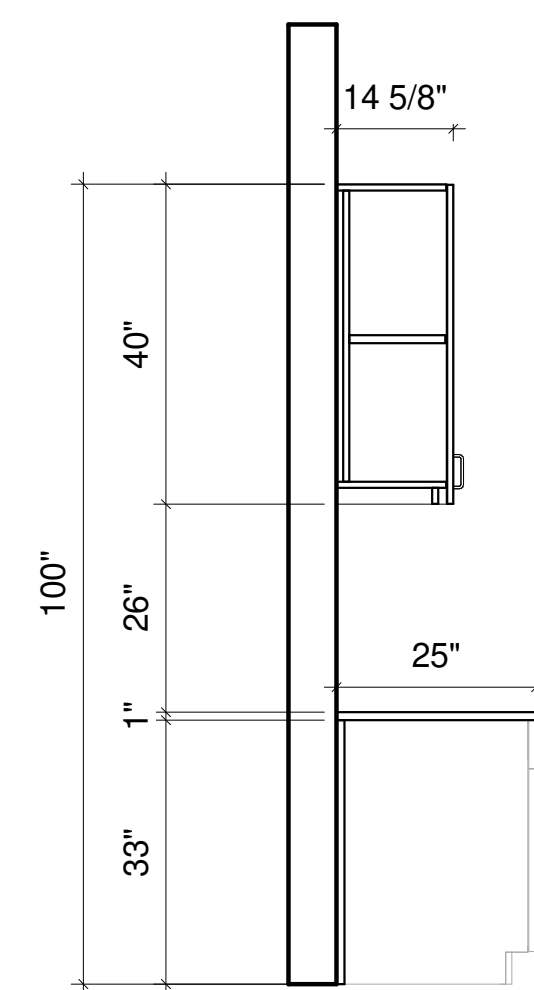
6 3D View - Kitchen
A101



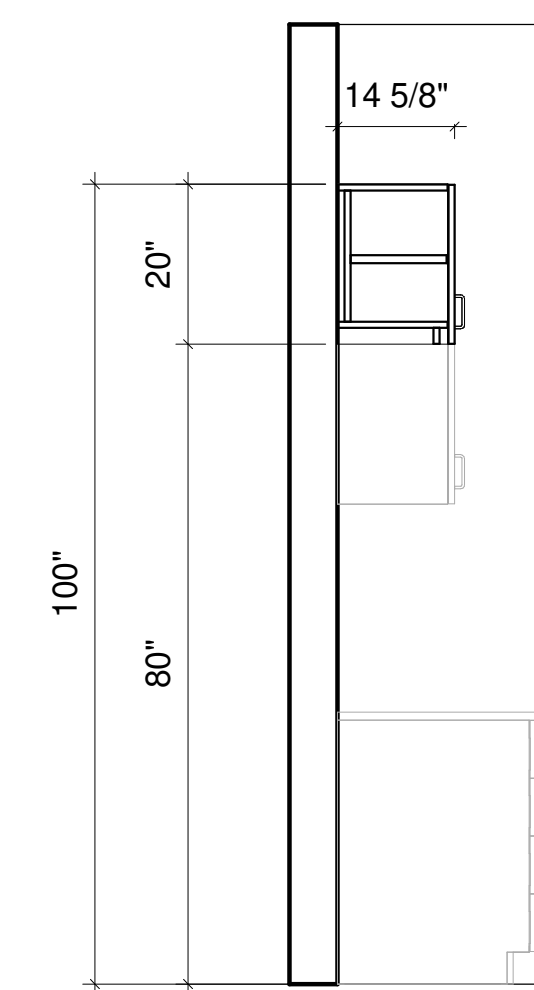
2 Elevation View - Kitchen
A101 1/2" = 1'-0"



3 Section View - Kitchen A
A101 1/2" = 1'-0"



4 Section View - Kitchen B
A101 1/2" = 1'-0"



5 Section View - Kitchen C
A101 1/2" = 1'-0"

Sweet Home Fire Dept

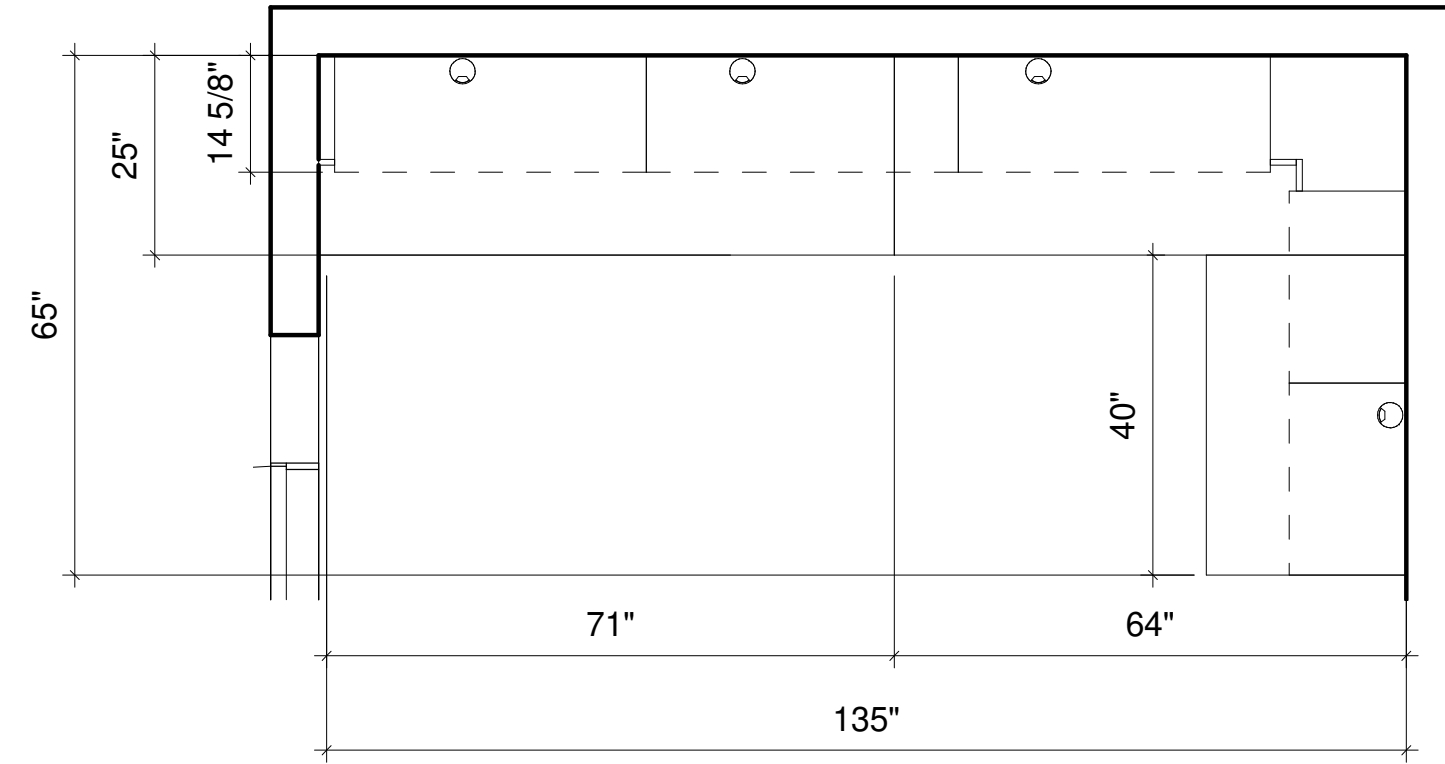
DEALER:

Spacesaver Specialists

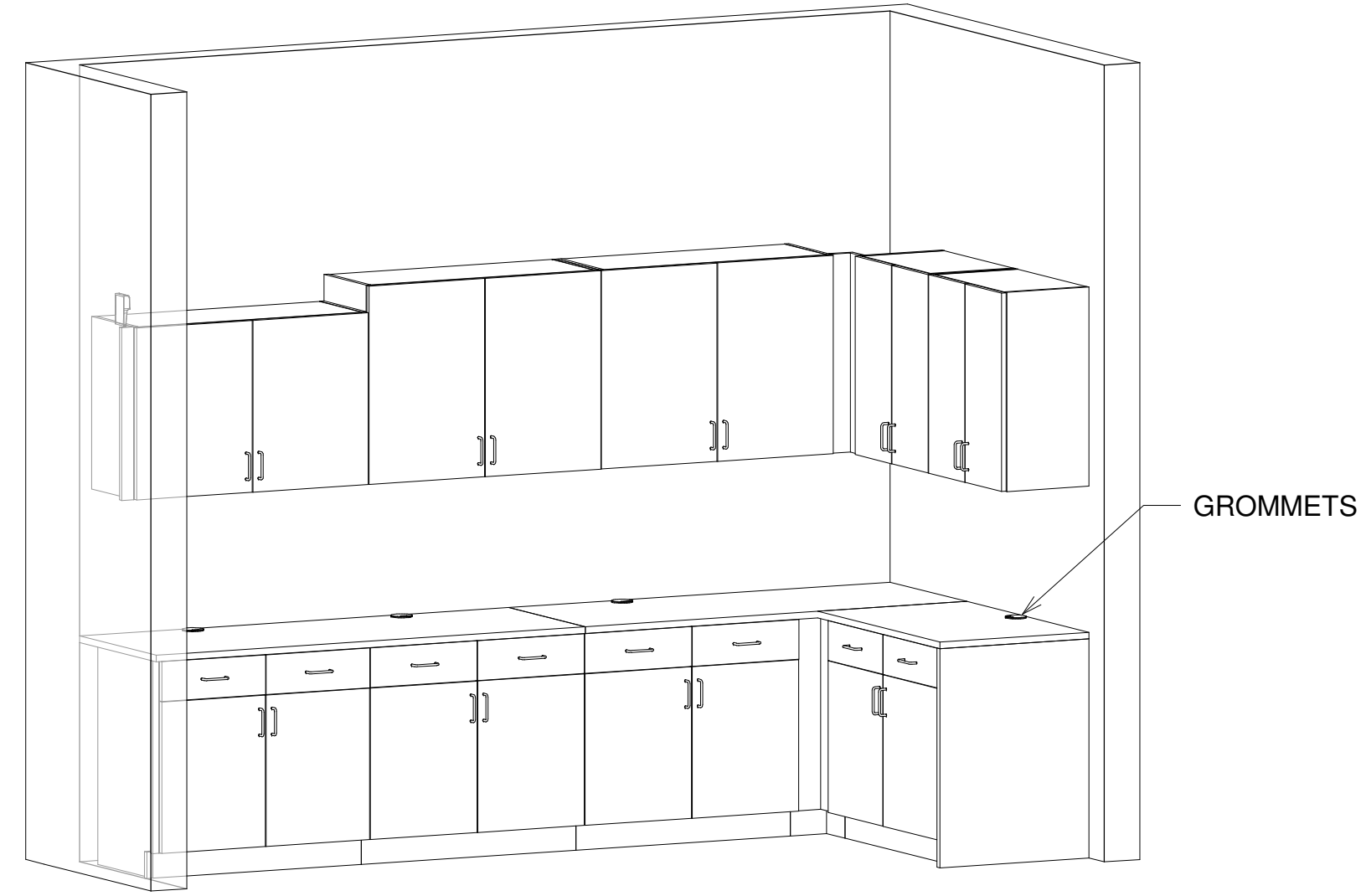
Kitchen Overall Plan

PROJECT NUMBER: 49181
DATE: 06/27/2028
DRAWN BY: HN
SCALE: 1/2" = 1'-0"
SHEET NO:

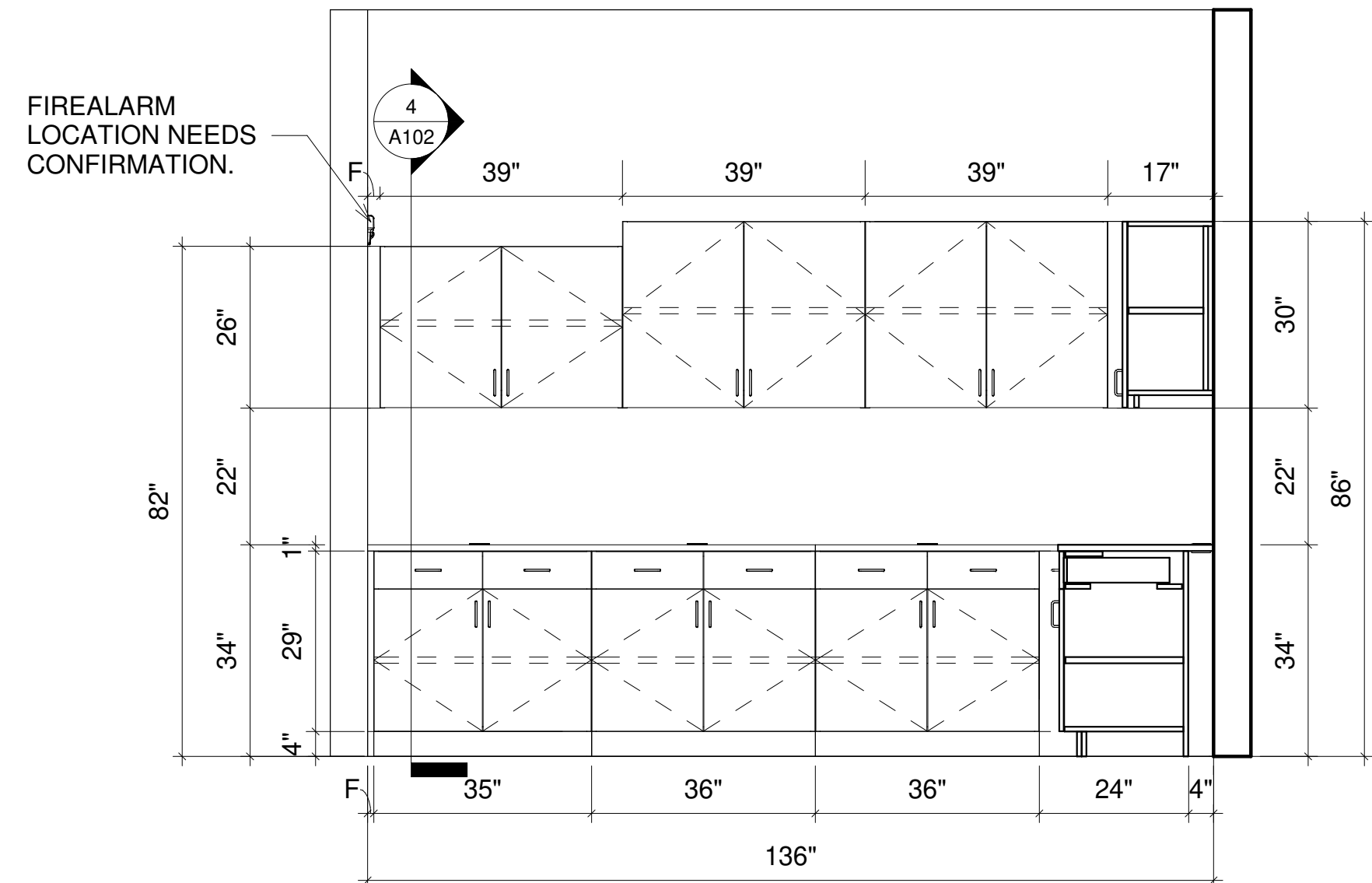
NOTE:
 - 4" GAP FOR WIRING.
 - GROMMET ON TOP OF SURFACE FOR WIRING.
 - GROMMET ON THE SIDE PANEL AND BELOW INTO THE TOE KICK AREA
 IN EACH UNITS FOR WIRING.
 - (1) GROMMET PER SIDE PANEL.
 - (1) GROMMET CENTERED PER BOTTOM PANEL.



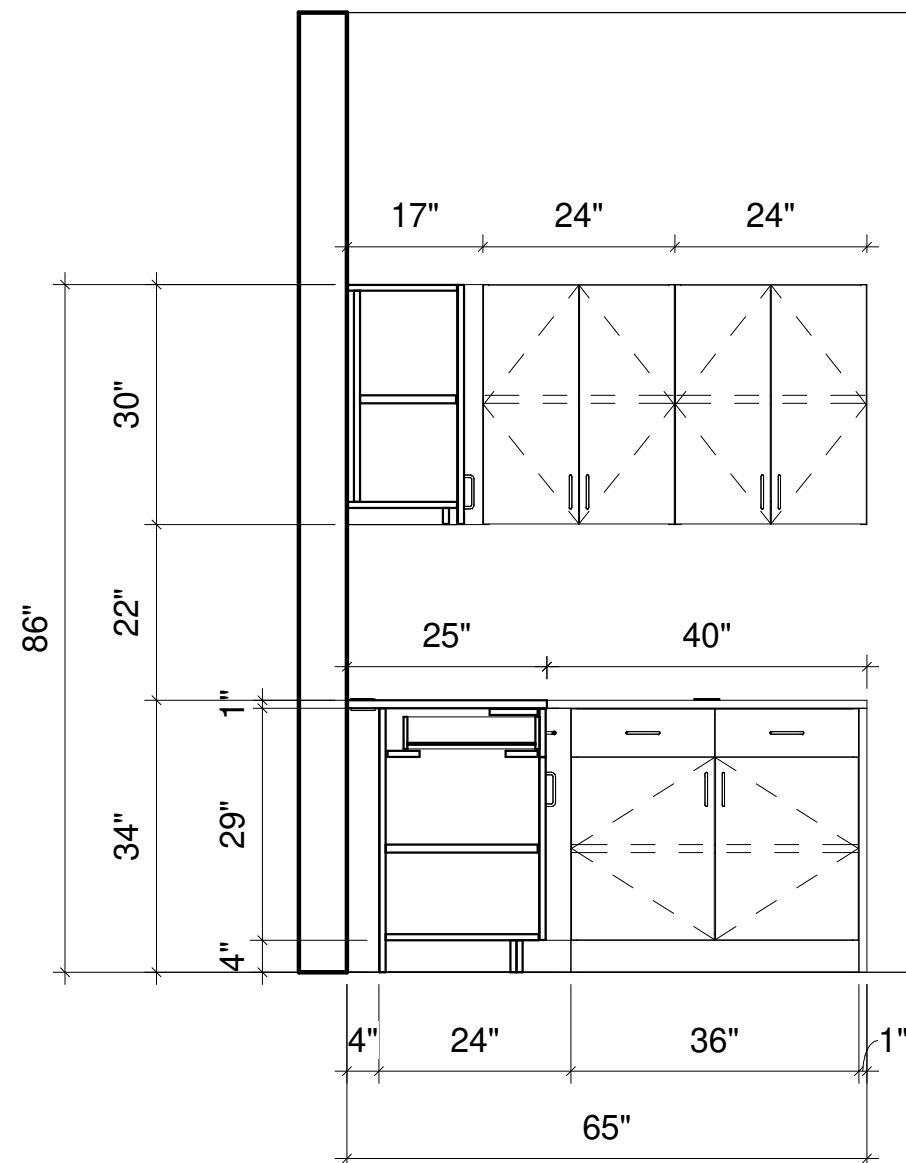
1 Level View - Booking
 A102 1/2" = 1'-0"



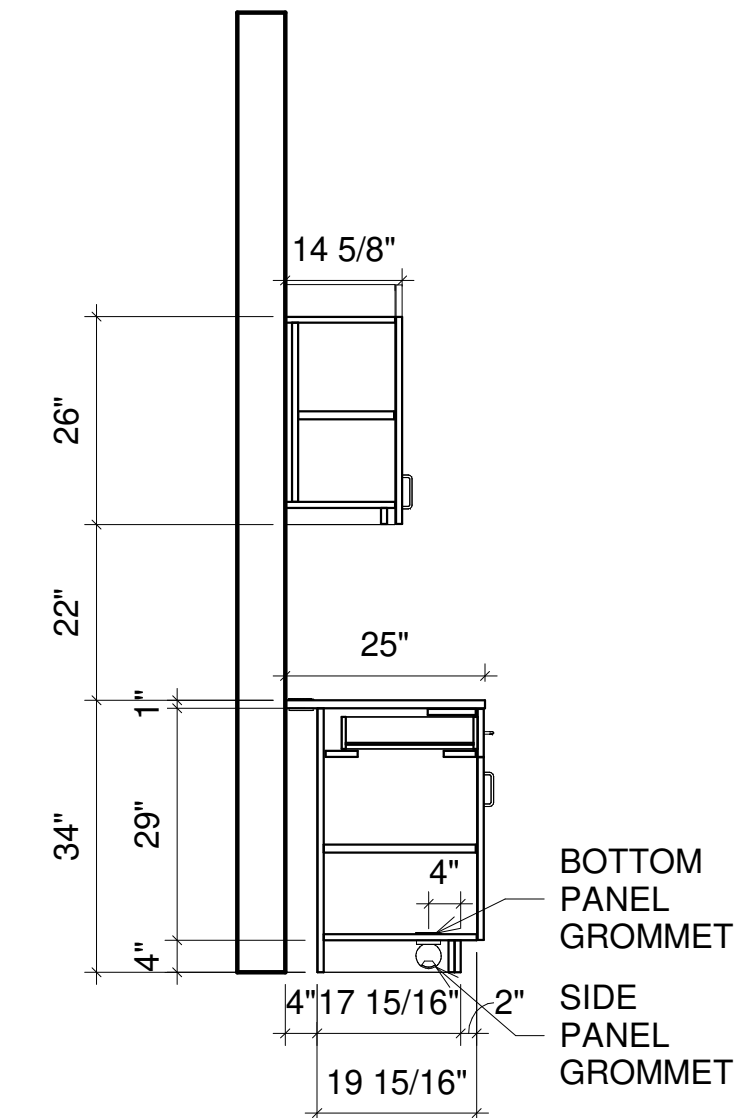
5 3D View - Booking
 A102



2 Elevation View - Booking A
 A102 1/2" = 1'-0"



3 Elevation View - Booking B
 A102 1/2" = 1'-0"



4 Section View - Booking (TYP)
 A102 1/2" = 1'-0"



3156 Production Dr.
 Fairfield, OH 45014
 800-503-9966
 hamiltoncs.com

Smart. Resourceful. Reliable.

REV	DESCRIPTION	DATE
1	For Review	06/27/2024

Sweet Home Fire
 Dept

DEALER:
 Spacesaver
 Specialists

Booking Overall Plan

PROJECT NUMBER: 49181
 DATE: 06/27/2028
 DRAWN BY: HN
 SCALE: 1/2" = 1'-0"
 SHEET NO:

A102

COLOR CHART

SMOOTH & TEXTURED POWDER COAT PAINT FINISHES

STANDARD COLORS

Cottonwood
CO (204)Furniture White
FW (15)Tan
TN (1)Frost
FR (6)

No Upcharge.

Designer Grey
DG (2)Blue Grey
BG (25)Forest Green†
FG (84)Black
BL (7)

†Not Available in Textured on Mobile Product Line.

CUSTOM COLORS

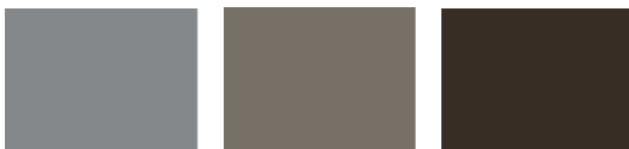
Light Tone
LG (29)Whisper
WP (216)Warm Brown
WB (18)Nevada Beige**
NB (250)Locker Grey**
GL (239)

5% Upcharge.

Red Iron
RI (252)Thunder
TD (33)Nordic
ND (212)Flannel
FN (207)

**Not Available Mobile Product Line.

METALLIC COLORS

Starlight Silver
SX (145)Champagne
CM (218)Bronze
BM (217)

10% Upcharge.

Slight variations occur in texture, color, grain configurations and finish acceptance of materials used. Therefore, finished pieces may vary in tone or character from images shown on this page. Please order a sample from your Spacesaver sales representative for a more accurate representation of the finished piece.

A COMMITMENT TO QUALITY POWDER COAT PAINT FINISHES

Available in both smooth and textured finishes. Not all colors and finishes available across all product lines see notes below. Color swatches and recommended finishes below. All components go through a multistage surface preparation prior to being coated; this process enhances topcoat bonding. The topcoat is a furniture-quality, epoxy-polyester hybrid Powder Coat Finish that meets or exceeds specifications set forth by the American Library Association.

Our electrostatically-applied, thermoset Powder Coat Paint System provides a durable hard finish with superior performance qualities.

- Excellent abrasion, impact, corrosion, stain, yellowing and chemical resistance.
- Exceptional adhesion with uniform film thickness and elimination of runs and sags associated with wet systems.
- A higher edge coating film thickness which virtually eliminates any sharp metal edges.
- Optional antimicrobial powder coat finish is available on all normally powder coated products. Antimicrobial powder coat contains a time-released germicide that is 99.9994% effective in controlling the growth of bacteria, mold, and mildew on the surface.

A COMMITMENT TO THE ENVIRONMENT

Our system is environmentally safe without any volatile or fugitive (stray) emissions in the finished product. Additionally, during the manufacturing process, we produce no volatile emissions or hazardous waste.

A COMMITMENT TO OUR CUSTOMERS

With the goal of bringing you the best local sales and service in the industry, our distribution network is composed of independently owned and operated distributors in major cities throughout North America. The Spacesaver Group's local sales consultant, factory-certified technicians, and expert support staff all work together to provide an excellent customer experience during the design process and long after the sale.

The engineers, project managers, and other professionals at our Wisconsin headquarters collaborate with our distribution partners every day to bring you new product innovations, efficient manufacturing processes, and superior customer support.

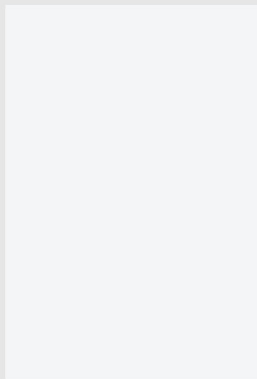
We live up to our commitments and have the references to prove it. You can rely on The Spacesaver Group.



Spacesaver Corporation
1450 Janesville Avenue
Fort Atkinson, WI 53538-2798
800 492 3434
www.spacesaver.com

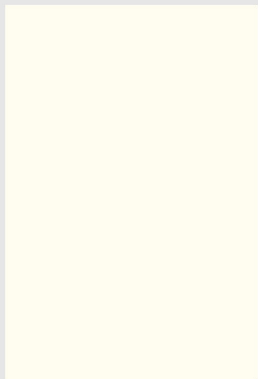
STANDARD FINISHES

Solid Laminates



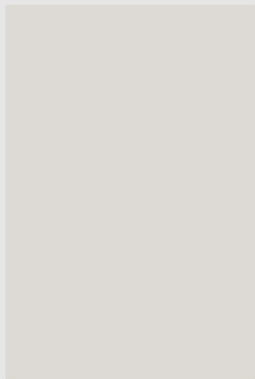
Designer White

Wilsonart: D354-60



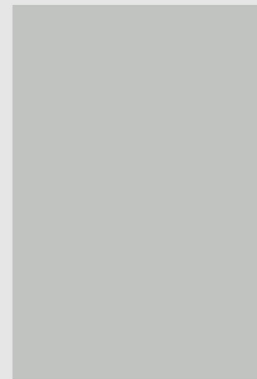
Linen

Wilsonart: D427-60



Grey

Wilsonart: 1500-60



Dove Grey

Wilsonart: D92-60



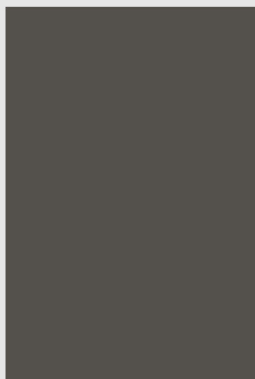
North Sea

Wilsonart: D90-60



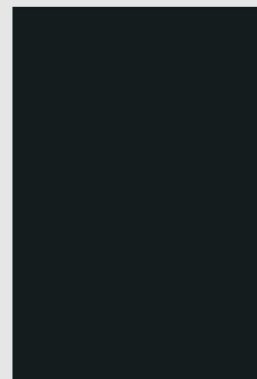
Fossil Shale

Wilsonart: D504-60



Slate Grey

Wilsonart: D91-60



Black

Wilsonart: 1595-60

Colors on screen may vary from actual product.
Matching PVC edgeband is available for all HAMILTON standard finishes.

CONTACT US

hamiltoncs.com

800.503.9966

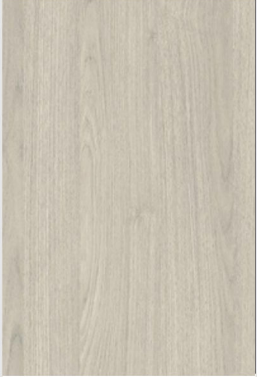
info@hamiltoncs.com



HAMILTON
CASEWORK SOLUTIONS

STANDARD FINISHES

Woodgrain Laminates



Italian Silver Ash

Wilsonart: 8217-16* textured finish



Fusion Maple

Wilsonart: 7909-60



New Age Oak

Wilsonart: 7938-38



Brazilwood

Wilsonart: 7946-38



Amber Cherry

Wilsonart: 7919-78* textured finish



NeoWalnut

Wilsonart: 7991-38



French Pear

Wilsonart: 8220-38



Phantom Charcoal

Wilsonart: 8214-28* textured finish



Skyline Walnut

Wilsonart: 7964-12* textured finish



Webb Oak

Wilsonart: 17013-16* textured finish

Colors on screen may vary from actual product.
Matching PVC edgeband is available for all HAMILTON standard finishes.
Textured finishes may not be suitable for worksurfaces.
Crossgrain laminate not available in textured finishes.

CONTACT US

hamiltoncs.com

800.503.9966

info@hamiltoncs.com



HAMILTON
CASEWORK SOLUTIONS

STANDARD FINISHES

Patterned Laminates



White Tigris

Wilsonart: 4783-60



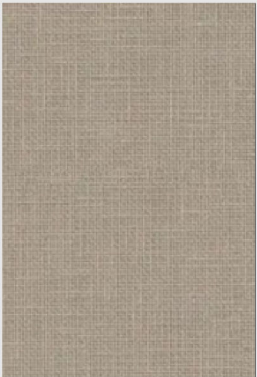
Natural Cotton

Wilsonart: 4946-38



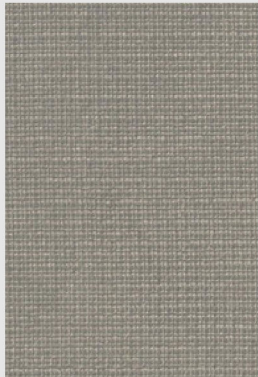
Green Slate

Formica: 8793-58



Casual Linen

Wilsonart: 4944-38



Pewter Mesh

Wilsonart: 4878-38



Washi Crystal

Wilsonart: 5017-38



Steel Mesh

Wilsonart: 4879-38

Colors on screen may vary from actual product.
Matching PVC edgeband is available for all HAMILTON standard finishes.

CONTACT US

hamiltoncs.com

800.503.9966

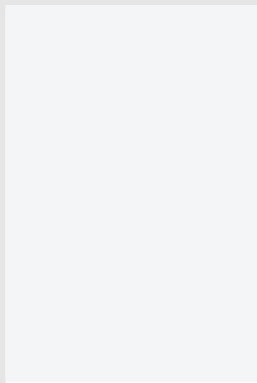
info@hamiltoncs.com



HAMILTON
CASEWORK SOLUTIONS

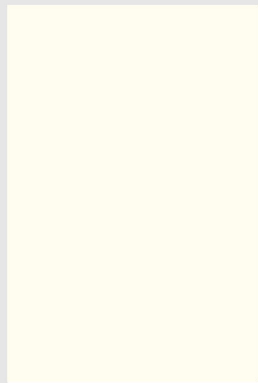
STANDARD FINISHES

MasterSeries



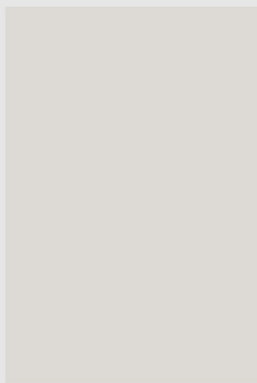
Designer White

Wilsonart: D354-60



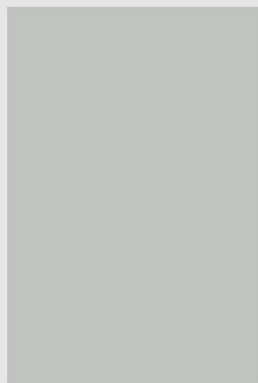
Linen

Wilsonart: D427-60



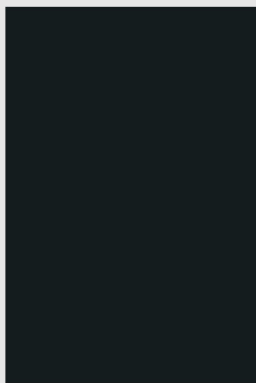
Grey

Wilsonart: 1500-60



Dove Grey

Wilsonart: D92-60



Black

Wilsonart: 1595-60

Colors on screen may vary from actual product.
Matching PVC edgeband is available for all HAMILTON standard finishes.

CONTACT US

hamiltoncs.com

800.503.9966

info@hamiltoncs.com



HAMILTON
CASEWORK SOLUTIONS

STANDARD AVAILABILITY

Type	Color	Number	Textured	TFL	HPL*	MasterSeries	Glass Doors	Crossgrain
Solid	Designer White	D354-60		Y	Y	Y	Y	
Solid	Linen	D427-60		Y	Y	Y	Y	
Solid	Grey	1500-60		Y	Y	Y	Y	
Solid	Dove Grey	D92-60		Y	Y	Y	Y	
Solid	North Sea	D90-60		Y	Y	*	Y	
Solid	Fossil Shale	D504-60		Y	Y	*	Y	
Solid	Slate Grey	D91-60		Y	Y	*	Y	
Solid	Black	1595-60		Y	Y	Y	Y	
Woodgrain	Italian Silver Ash	8217-16	Y	Y	Y	*	Y	
Woodgrain	Fusion Maple	7909-60		Y	Y	*	Y	Y
Woodgrain	New Age Oak	7938-38		Y	Y	*	Y	Y
Woodgrain	Brazilwood	7946-38		Y	Y	*	Y	Y
Woodgrain	Amber Cherry	7919-78	Y	Y	Y	*	Y	
Woodgrain	NeoWalnut	7991-38		Y	Y	*	Y	Y
Woodgrain	French Pear	8220-38		Y	Y	*	Y	Y
Woodgrain	Phantom Charcoal	8214-28	Y	Y	Y	*	Y	
Woodgrain	Skyline Walnut	7964-12	Y	Y	Y	*	Y	
Woodgrain	Webb Oak	17013-16	Y	Y	Y	*	Y	
Pattern	White Tigris	4783-60		Y	Y	*	Y	
Pattern	Natural Cotton	4946-38		Y	Y	*	Y	
Pattern	Casual Linen	4944-38		Y	Y	*	Y	
Pattern	Pewter Mesh	4878-38		Y	Y	*	Y	
Pattern	Washi Crystal	5017-38		Y	Y	*	Y	
Pattern	Steel Mesh	4879-38		Y	Y	*	Y	
Solid	Green Slate	8793-58		Y	Y	*	Y	

*Upcharge
 Contact Customer Service for additional material options.
 Matching PVC edgeband is available for all HAMILTON standard finishes.

CONTACT US

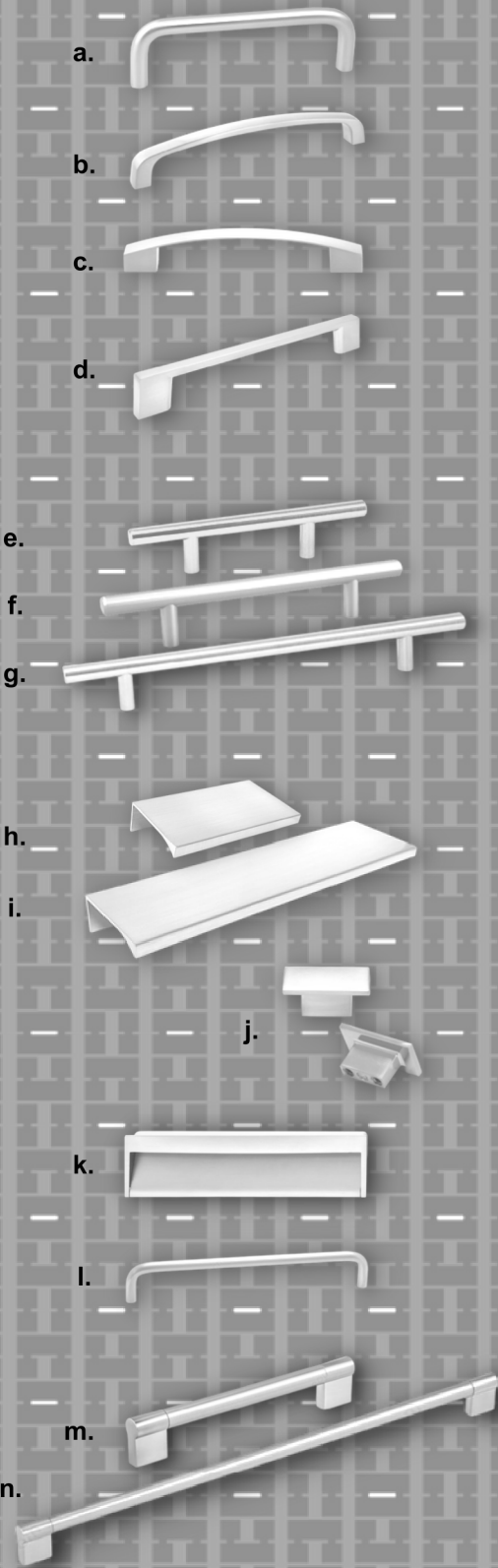
hamiltoncs.com

800.503.9966

info@hamiltoncs.com



STANDARD PULLS



Pull	Size	Finish	ADA Friendly
a. Wire Pull	4"	Satin Nickel Black Nickel	Yes
b. Modern Pull	128mm	Satin Nickel Matte Black	
c. Bow Pull	128mm	Satin Nickel	Yes
d. Square Pull	128mm	Satin Nickel Matte Black Dark Pewter	
e. Bar Pull	6"	Satin Nickel Matte Black	
f. Bar Pull*	8"	Satin Nickel Matte Black	
g. Bar Pull*	10"	Satin Nickel Matte Black	
h. Tab Pull	3"	Satin Nickel Matte Black	
i. Tab Pull	6"	Satin Nickel Matte Black	
j. Rectangular Knob	40mm x 22mm	Satin Nickel	
k. Inset Pull*	173mm x 45mm	Brushed Nickel	
l. Wire Pull* Antibacterial**	128mm	Brushed Nickel	
m. Contemporary Pull* Stainless	6"	Brushed Nickel	
n. Contemporary Pull* Stainless	16"	Brushed Nickel	

*Upcharge may apply
**Based on manufacturer data

CONTACT US

hamiltoncs.com

800.503.9966

info@hamiltoncs.com



HAMILTON
CASEWORK SOLUTIONS