

# CITY OF SWEENY STUDY/ REPORT

TWDB – DWSRF Water Improvements Proejct



March 8, 2024



100 Nugent Street  
Conroe, TX 77301  
(936) 441-7833  
bleylengineering.com  
Texas Firm No. F-678

# TABLE OF CONTENTS

<b>3.1</b>	<b>Organization</b>	<b>2</b>
<b>3.2</b>	<b>Key Personnel/Project Team</b>	<b>4</b>
	<b>3.2.3 Project Approach</b>	<b>10</b>
	<b>3.2.4 Organizational Chart</b>	<b>13</b>
	<b>3.2.5 Consultants</b>	<b>14</b>
	<b>3.2.6 MWBE Participation</b>	<b>14</b>
<b>3.3</b>	<b>Resource Utilization Plan</b>	<b>15</b>
<b>3.4</b>	<b>Workload Status</b>	<b>16</b>
<b>3.5</b>	<b>Experience</b>	<b>17</b>
	<b>References</b>	<b>20</b>

## Appendices

- A – 3.9 Submittal Signature
- B - Statement on Insurance
- C –Conflict of Intrest Statement

## Introduction

### 3.1 Organization: General

3.1.1 Firm Name: Bleyl Interests Inc. (dba Bleyl Engineering)

3.1.2 Address & Phone Number: 100 Nugent Street, Conroe, Texas 77301 – (936) 441-7833

3.1.3 Texas Board of Professional Engineers Firm Registration Number: 678

3.1.4 Submittal is for:  Parent Company  Branch Office

3.1.5 Year Firm Established: 1997

3.1.6 Former Firm Name(s): N/A

3.1.7 Type of Ownership: Corporation

3.1.8 Name of Parent Company (if any): N/A

3.1.9 Name of Principals and Titles:

<u>John D. Bleyl, PE</u>	<u>President &amp; CEO</u>
<u>Derek Wind, PE CFM</u>	<u>Chief Operating Officer</u>
<u>Ken Walker, CPA</u>	<u>Chief Financial Officer</u>
<u>Mike Kelly, PE</u>	<u>Director of Engineering</u>
<u>Steffanie DeLoss, PE, CFM</u>	<u>Land Development-Dept. Manager</u>
<u>Travis Walker, PE</u>	<u>Public Works – Dept. Manager</u>
<u>Tim Wolff, PE CFM</u>	<u>Bryan Regional Manager</u>
<u>Steve Duncan, PE</u>	<u>Senior Director</u>
<u>Steve Ihnen, PE</u>	<u>Austin Regional Manager</u>
<u>Jason Rodgers, PE</u>	<u>Austin Asst. Regional Manager</u>

3.1.10 Office Locations, Personnel, and Disciplines

Office Location: Conroe, Texas Employees: 58

---

Disciplines:

Civil Engineers: 28	Admin: 7
Designers/Drafters: 9	Accounting: 4
Construction Managers: 2	IT: 1
Inspectors: 4	Executives: 3



## **PUBLIC WORKS**

Travis T. K. Walker, PE

- Groundwater Production, Treatment, Distribution, & Modeling
- Sanitary Sewer Modeling, Collection, Lift Stations, & Treatment
- Stormwater Collection
- Feasibility Studies

## **LAND & SITE DEVELOPMENT**

Steffanie DeLoss, PE, CFM

- Master-Planned Residential
- Commercial, Industrial, Institutional, Office & Medical
- Recreational & Storage
- Permitting & Feasibility

## **HYDROLOGY & HYDRAULICS**

Adam G. Vento, PE, CFM

- Advanced Hydrologic & Hydraulic Modeling
- FEMA Map Revisions (CLOMR/LOMR)
- Dam Analysis & Storm Water Management
- Master Drainage Planning & Evaluation

## **CONSTRUCTION SERVICES**

Pat Riley, CPM

- Contract Bidding & Construction Management
- Onsite Representation & Inspections
- Constructability Review
- NACE Coating Inspections

---

Office Location: **Bryan, Texas**

Employees: **16**

---

Disciplines:

Civil Engineers: 13  
Designers/Drafters: 2

Admin: 1

## **PUBLIC WORKS**

Steve Duncan, PE

- Groundwater Production, Treatment, Distribution, & Modeling
- Sanitary Sewer Modeling, Collection, Lift Stations, & Treatment
- Stormwater Collection, Detention, & Modeling

## **LAND & SITE DEVELOPMENT**

Tim Wolff, PE, CFM, Regional Manager

- Master-Planned Residential
- Commercial, Industrial, Institutional, Office & Medical
- Recreational & Storage
- Permitting & Feasibility
- Feasibility Studies

## **TRANSPORTATION**

David Besly, PE, Department Manager

- Roadway Design and Permitting
- Traffic Studies (Including TIA's)

- Traffic Signals, Pavement Markings, & Signing
- Intersection Improvements

Office Location: **Austin, Texas**

Employees: 19

---

Disciplines:

Civil Engineers: 6

Admin: 4

Designers/Drafters: 9

### **LAND & SITE DEVELOPMENT**

Steve Ihnen, PE, Regional Manager

- Master-Planned Residential
  - Commercial, Industrial, Institutional, Office & Medical
  - Recreational & Storage
  - Permitting & Feasibility
  - Stormwater Collection, Detention, & Modeling
- 

Office Location: **Houston, Texas**

Employees: 7

Disciplines:

Civil Engineers: 4

Admin: 1

Designers/Drafters: 2

### **PUBLIC WORKS**

Mark Adam, PE, RPLS, Regional Manager

- Groundwater Production, Treatment, Distribution, & Modeling
- Sanitary Sewer Modeling, Collection, Lift Stations, & Treatment
- Stormwater Collection, Detention
- Feasibility Studies

## 3.2 Key Personnel/Project Team

Bleyl's team of engineers possess a strong background in project execution for Cities, Counties, and Utility Districts. Our leadership and project engineers have extensive civil engineering experience including water, wastewater, infrastructure improvements, public facilities, roadway & traffic engineering, drainage, and construction management. We look forward to providing design and construction support for important water quality improvements for the City. The Bleyl Team will coordinate with City staff, operators, sub-consultants, internal staff, and utility companies. Bleyl will ensure backup representatives remain available to accommodate project requirements for client meetings. Our team routinely manages multiple projects simultaneously and delegates workloads to handle various schedules and deadlines. For each project, a second engineer will assist the Project Manager. This approach allows for faster response times and provides an Assistant Project Manager when the Project Manager is unavailable. Bleyl's approach to project management has led to numerous successful projects for multiple cities and districts in the greater Houston area.

<b>Name</b>	<b>Firm</b>	<b>Area of Expertise</b>	<b>Years Experience</b>	<b>License</b>	<b>State/Federal Experience?</b>
Travis Walker	Bleyl	Municipal Water Production, treatment, distribution/Wastewater collection	10+	TX PE 129751	Yes
Jonny Green	Bleyl	Municipal Water Production, treatment, distribution/Wastewater collection and treatment	13+	TX PE 120300	Yes
Steve Duncan	Bleyl	Municipal Water Production, treatment, distribution/Wastewater collection and treatment, Grants	30+	TX PE 83252	Yes
Mike Kelly	Bleyl	Municipal Water/Wastewater	20+	TX PE 94562	Yes
Carl Rushing	Bleyl	Municipal Water Production, treatment, distribution/Wastewater collection	20+	TX PE 121777	Yes
Blake Barringer	Bleyl	Water distribution and treatment, Grants	7+	TX PE 138957	Yes
Morgan Brown	Bleyl	Municipal Water, distribution/Wastewater collection and treatment	5+	TX PE 147737	Yes
Pat Riley	Bleyl	Construction Management, Former Public Works Director, Licensed Water/wastewater operator	25+	"A" Water Operator "B" Wastewater Operator	Yes

All licenses referenced above are active as of this submittal. Additional detailed information regarding the team and its organizational structure follows in the following pages.

**Travis T. K. Walker, PE**

Role: Client Manager

Title: Public Works- Dept. Manager

EXPERTISE

- Municipal Engineering
- Water Supply, Treatment, and Distribution
- Wastewater Collection, Lift Stations, and Treatment
- Roadways

EDUCATION

B.S., Civil Engineering 2013 - Texas A&M University  
Licensed PE- Texas No. 129751

AFFILIATIONS

Rotary Club - Member - 2016 - present  
Club President - 2021-2022

COMMUNITY SERVICE

Faith Bible Church - Member

SUMMARY

Travis serves as an Engineer for several Cities and Districts in Montgomery County and as a consulting engineer for others. He assists with plan reviews, facility inventories, capacity analysis, and planning for facility expansions. He has considerable design experience covering a wide variety of projects including the design of water plants, water distribution systems, wastewater lift stations and plants, and wastewater collection lines.

His relevant experience includes water quality research, analysis, and rehabilitation of fouling wells. He has conducted water quality sampling and testing within multiple Districts and Cities in Montgomery County.

**Jonny Green, PE**

Role: Project Manager

Title: Engineering Manager

EXPERTISE

- Water Production and Distribution
- Water Treatment
- Wastewater Collection
- Wastewater Treatment
- Roadways
- Drainage and Detention
- Flood Studies and Dams
- Bond and Grant Applications

EDUCATION

B.S., Civil Engineering 2010 - Texas A&M University  
Licensed PE- Texas No. 120300  
Certified sUAS Pilot

AFFILIATIONS

Conroe Lions Club

COMMUNITY SERVICE

Christ Community Church, Magnolia  
Missions Team  
Worship Ministry  
Children’s Ministry  
Prayer Ministry

SUMMARY

With over 13 years of experience, Jonny has worked extensively with municipalities on a wide variety of projects. His design experience includes water production and distribution, wastewater collection, site development, roadways, dams, drainage, detention, flood studies, lift stations, and bond and grant applications. Jonny is a certified Small Unmanned Aircraft System Pilot and manages our Aerial Imagery services. He previously served as Interim Director of Public Works for the City of Willis.



**Steve Duncan, PE, LEED AP**

Role: Technical Expert

Title: Senior Director

EDUCATION

B.S., Civil Engineering 1993 -  
Texas A&M University - magna cum  
laude  
Licensed PE Texas No. 83252 -  
Oklahoma No. 23360

TECHNICAL POLICY EFFORTS

- B/CS United Standards
- College Station Lift Station Design Guidelines
- TCEQ Water Quality Advisory Group

AFFILIATIONS

TSPE Brazos Chapter - Engineer of the Year and Past President  
Project Management Institute – 2010+  
WEAT - 2003 to Present  
Chi Epsilon - Civil Engr Honor Society  
Tau Beta Pi - Engineering Honor Society

COMMUNITY SERVICE

Family Promise Brazos Valley - Board Member  
Lions Club of Bryan - Past President  
KOR Educational School - Past President  
Parkway Baptist Church - Past Deacon Chairman

SUMMARY

With over 30 years of experience, Steve has garnered invaluable insight into the field of civil engineering with a focused emphasis on municipal water & wastewater projects. His expertise includes client and project management, design and construction management for all types of Water and Wastewater projects. Steve’s proven history of serving cities of all sizes and regions makes him invaluable to the team.

**Mike Kelly, PE**

Role: QA/QC

Title: Director of Engineering Services

EDUCATION

Civil Engineering, B.S. C.E., 1999  
Clemson University  
Licensed PE Texas No. 94562

SUMMARY

With over 20 years of experience in civil engineering, Mike has worked extensively with municipalities, utility districts, and private developers. His design experience includes roadways, drainage, water plants, water wells, and water distribution. Mr. Kelly also has extensive experience in single family residential, commercial development, sewer collection and rehabilitation. With Bleyl since 2006, Mr. Kelly manages numerous clients and various types of projects including serving as District Engineer to Porter SUD since 2006. Porter SUD has historically had iron and manganese problems in their water wells which has been remedied via various filter and treatment options. Mr. Kelly provides routine quality control oversight for various Public Works projects for other project managers at Bleyl Engineering.

Serving as Director of Engineering for the Conroe office, Mike fills the role of QA/QC for projects leaving the office prior to submittals and construction. This has continued to hone and sharpen his eye for technical improvements, constructability, and financial efficiency of engineering design efforts.





## **Carl Rushing, PE**

Role: Alt. Project Manager, Support Staff

Title: Engineering Project Manager

### EXPERTISE

- Project management
- Water production and treatment
- Water distribution
- Wastewater collection

### EDUCATION

B.S. Industrial Technology, 1991

Sam Houston State University

M.A. Industrial Technology, 1993

Sam Houston State University

Licensed PE- Texas No. 121777

### AFFILIATIONS

Conroe Lions Club

### SUMMARY

Mr. Rushing has extensive experience in project design and construction management for private and municipal engineering work; this includes designs for commercial, residential, and industrial developments; detention ponds, drainage analysis, sanitary sewer lift station sizing and design, water plant design, water and wastewater demand and capacity analysis, earthwork calculations, and civil plan and plat reviews for city clients.

Carl has extensive experience on water plants and distribution systems and an attention to detail for new design ideas or potential treatment options.

## **Blake Barringer, PE**

Role: Alt Client Manager, support staff

Title: Engineering Project Manager

### EXPERTISE

- Grants
- Water Distribution
- Municipal Engineering
- Wastewater Systems
- Hydrology & Hydraulics

### EDUCATION

B.S., Civil Engineering 2016 -

LeTourneau University

Licensed PE- Texas No. 138957

### COMMUNITY SERVICE

Conroe Noon Lions Club

Member - 2018 to present

### SUMMARY

Blake is experienced in a wide variety of municipal projects including roadways, storm drainage, storm water detention, sanitary sewer, water distribution systems, and construction inspection. He serves as the Assistant District Engineer for Lake Conroe Hills MUD, where he assists in plan reviews, facility inventories, capacity analysis, and planning for facility expansions. Blake has assisted in residential and commercial developments in Montgomery County. His experience includes working with ArcGIS and AutoCAD Civil 3D for plan design; and Bentley PondPack and HEC-RAS for drainage modeling. Blake has extensive waterline replacement and rehabilitation experience throughout developed cities. Blake also has served on multiple grant-funded projects in the Greater Houston Area.

## **Morgan Brown, PE**

Role: Assistant Project Manager

Title: Project Engineer

### EXPERTISE

- Municipal Engineering
- Wastewater Collection, Lift Stations, and Treatment

### EDUCATION

B.S., Civil Engineering 2019 - Texas A&M University  
Licensed PE- Texas No. 147737

### COMMUNITY SERVICE

Church Project - Member

### SUMMARY

In March of 2023, Morgan became a licensed Professional Engineer in the State of Texas. He is currently a Project Engineer in the Conroe office where he has assisted and designed a wide variety of projects related to public works, including sanitary sewers, wastewater treatment plants, water plants, water distribution systems, storm drainage, storm water detention, and site plans. Mr. Brown also serves as the Assistant District Engineer for East Montgomery County MUD No. 4 and Montgomery County MUD 142. He is proficient in the use of AutoCAD Civil3D, ArcGIS, PondPack and XP-SWMM.

Mr. Brown is a well-organized, methodical engineer, who emphasizes schedules, and ensuring designs are kept within budget as designs progress.

## **Pat Riley**

Role: Construction Manager

Title: Construction Manager

### EXPERTISE:

- Construction Management
- Public Works Management
- Municipal Operations

### EDUCATION

M.B.A., Business Administration 2003  
University of Phoenix  
Certified Public Manager 2009  
A Water Operator  
B Wastewater Operator

### COMMUNITY SERVICES

Texas City Management Association  
Past President Green Forest and Caprock Chapters  
APWA  
AWWA  
TCEQ - Served on Groundwater Committee

### SUMMARY

With over 25 years of experience in public service and municipal management, Pat has served in Cities, Water Districts, and the U.S. Air Force (Civil Engineering Red Horse). Pat offers a unique insight into the challenges and needs of municipalities and private development. He has extensive experience managing projects and departments in all phases of municipal government including facilities, water, wastewater, storm drainage, streets, solid waste, municipal parks, cemeteries, airports, and municipal development construction. Pat is a Certified Public Manager who has a TCEQ A Water and B Wastewater licenses. Pat currently serves on the Texas New Community Alliance, DBA New Danville.

### 3.2.3 Project Approach

#### PROJECT UNDERSTANDING

We understand that the City of Sweeny has been experiencing water quality concerns within their distribution system, most notably colored water, likely associated with Iron, Manganese, or other color-causing contaminants in the groundwater. Other concerns within the potable water system include hydraulics, water age, and overall infrastructure conditions. Bleyl looks forward to the opportunity to serve the City of Sweeny with our carefully prepared team. Our team has extensive experience related to planning, permitting, environmental verifications, design, and construction phase services as it relates to municipal work, specifically potable water systems. Bleyl will ensure the City's Operator(s), staff, and other pertinent personnel are involved throughout each stage of the project from preliminary planning all the way through construction closeout. We will ensure to coordinate with key contributors and stakeholders as recommendations and decisions are made. Potential treatment options could include filtration, chemical treatment, distribution line cleaning, or others that may be determined during the planning and preliminary phases of the project.

#### DATA COLLECTION, PLANNING AND PRELIMINARY ENGINEERING

During the first phase, Bleyl will conduct an analysis of existing and desired conditions, including necessary survey, site visits, verification of water chemistry using Water Systems Engineering, , conduct reviews of previous resting results, plans and studies, verify any apparent environmental impacts, floodplain boundaries, and attend

meetings with City staff, Operations, and other necessary stakeholders to identify key concerns, design preferences, and priorities. Based on the results of these analyses, we will prepare a Preliminary Engineering Report ("PER") covering the existing conditions, any environmental considerations, an evaluation of options and our recommendations including cost considerations. As part of the preliminary study, we will also prepare a conceptual design as appropriate for presentation to City staff, and as directed, to the public or other stakeholders.

Phase services will include:

- Site investigation—review available record drawings, and water quality results, and conduct onsite inspection of facilities and existing conditions
- Prepare or assist in the coordination with TWDB as needed.
- Evaluate design options and prepare Preliminary Engineering Report with recommendations
- Assist in coordinating and conducting water sampling and analysis with Water Systems Engineering.
- Prepare conceptual exhibit(s) and preliminary cost estimate(s) for planning and budgeting
- Meet with City staff to discuss findings and recommendations, define project scope
- Conduct topographic and boundary survey if needed
- Support the acquisition of property and/or easements (including buffer zone) as needed
- Coordinate between the various consultants, the City, utility service providers, review agencies, and other appropriate entities

## PRELIMINARY DESIGN

After the PER and project scope is determined, Bleyl will prepare preliminary (30% and/or 60%) plan sets, specifications, contract documents, and cost estimates and conformance with the requirements of the City, the Texas Commission on Environmental Quality (“TCEQ”), and any additional jurisdictional requirements based on the funding source or the project scope.

Phase services may include:

- Regularly coordinate and meet with City staff to discuss design decisions and progress
- Revise design based on design meetings and input from City staff
- Conduct soil testing and geotechnical engineering design
- Prepare preliminary electrical and structural plans
- Prepare drafts of technical specifications and contract documents
- Prepare preliminary project details, including construction phasing plan and temporary erosion control plan
- Work with stormwater pollution specialist to prepare Stormwater Pollution Prevention Plan if required
- Refine cost estimates based on the design changes
- Coordinate with utility service providers (electrical, natural gas, comms) for any needed upgrades or extensions
- Finalize easement documents with property owners if required
- Submit preliminary deliverables to City for review
- Meet with City staff to review project submittals

## FINAL DESIGN

Bleyl will finalize the plans, specifications, and cost estimates. The documents will be submitted to the City for final review and to the appropriate jurisdictional agencies for permitting before bidding. Phase services will include:

- Revise design based on review meetings and final design considerations, including electrical and structural
- Finalize detailed analysis
- Finalize easement acquisitions as needed
- Submit notifications and/or plans to the TCEQ, utility service providers, funding sources, and any other agencies as necessary and obtain required permits or approvals for construction
- Prepare final cost estimates, bid quantities, and contract documents
- Finalize detailed construction plans and project specifications
- Meet with City staff and present final design
- Meet with City Council or hold a public meeting if needed

## BID PHASE SUPPORT

Bleyl’s team will provide bid support services including pre-bid meeting, bid opening, bid review, reference verifications, recommendations of award, and notice of award to the appropriate contractor. We will also assist with answering questions that arise during bidding and issuing of any addendums should they be necessary.

## CONSTRUCTION PHASE SUPPORT

Bleyl offers a full range of construction phase services to our clients, we have also partnered with construction inspection firms to assist if needed during construction for onsite

representation. Establishing a Notice To Proceed, in conjunction with TWDB coordination is one of the first steps of the Construction Management phase. Construction management of the project will also include:

- Reviewing construction submittals, shop drawings, etc.
- Responding to contractor requests for information (RFIs) and construction issues/change orders
- Reviewing construction inspection and material testing reports if needed
- Pay estimate review and processing
- Attend milestone inspections, final walkthrough, start-up, associated training, certificates of acceptance, and meetings as needed
- Warranty Walkthrough

We will maintain regular communication with the City throughout construction, and be attentive and responsive to requests to ensure a successful project and an end product that the City, and its residents, can be proud of.

#### QUALITY ASSURANCE AND CONTROL

Before each submittal, the report or entire set of Plans, Specifications, and Cost Estimates (“PS&E”) package is thoroughly reviewed by the Project Manager. At least one additional Professional Engineer also completes an independent, detailed QA/QC review of the package. Our QA/QC reviewers have extensive experience with municipal projects involving water production, distribution and treatment. Mr. Kelly, our lead QA/QC reviewer has past experience overseeing and managing pilot studies of proposed water filtration systems to ensure a systems effectiveness prior to full-scale implementation. He also has extensive experience with other

municipal-related work such as wastewater collection and treatment, drainage and detention, flood mitigation, traffic engineering and roadway design, and other infrastructure improvements. These additional areas of expertise prove invaluable during review as he sees a larger picture and looks for other potential concerns with the proposed project.

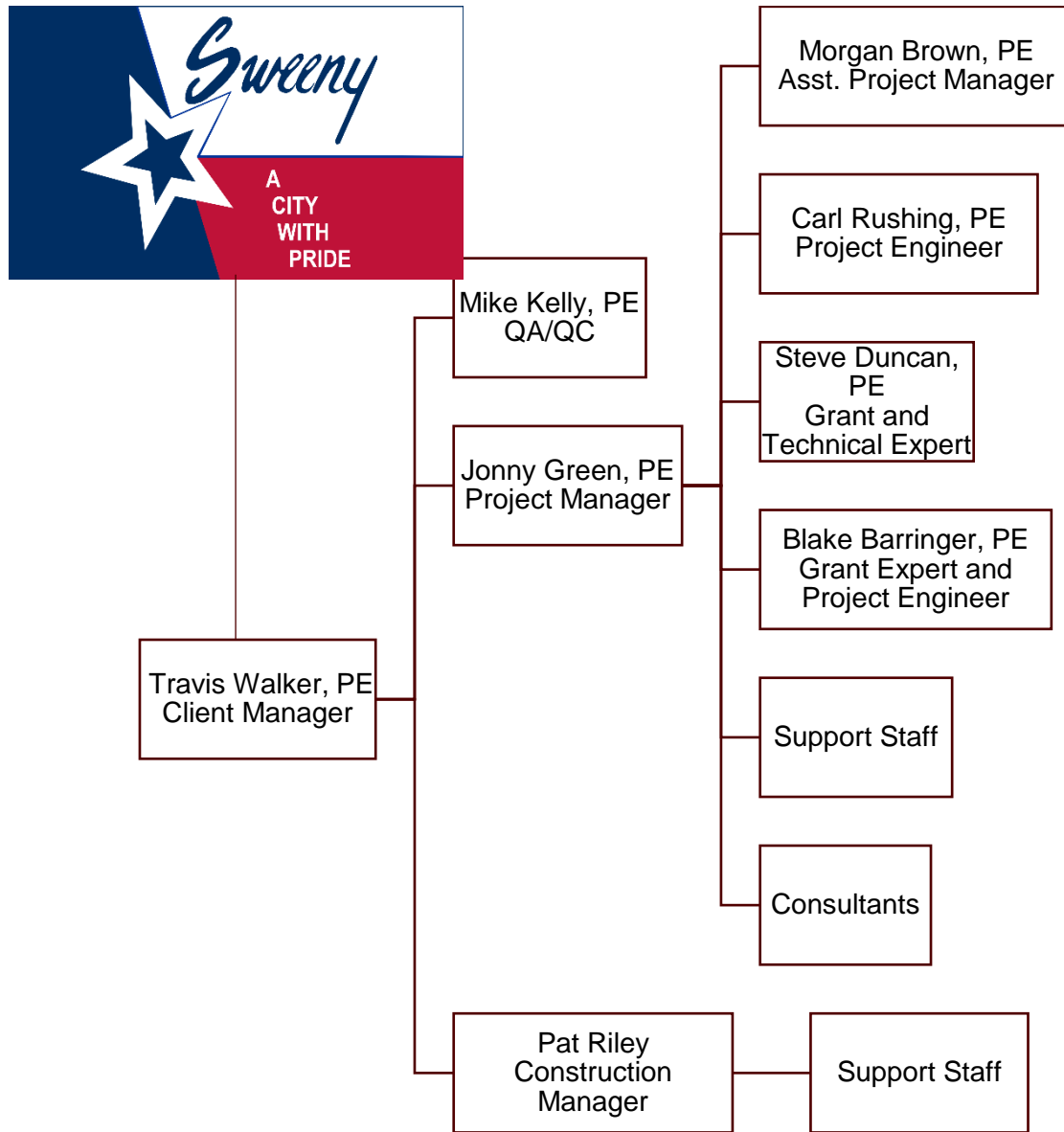
#### CONSTRUCTABILITY REVIEW

From the earliest stages, Bleyl considers constructability. Each project undergoes a review by the Construction Manager which includes quantity verification. Constructability is consistently a part of our formal quality assurance/quality control process as it is vital to ensuring a successful project. The construction services team will review the design, specifications, and cost estimate prior to bidding in order to ensure that every project is designed to be functional, economical, and practical.

#### SPECIALIZED SERVICES AND SUBCONSULTANTS

Some projects require specialized services, such as site-specific testing, geotechnical investigations, archaeological or environmental studies, specialized water quality testing, and more. To facilitate execution of all project requirements, we have a network of proven subconsultants in other disciplines we have worked with on previous projects from which to draw. To meet specific project requirements, we plan to utilize the consultants listed in section 3.2.5. Bleyl has also worked with many other subconsultants and has a wide menu to select from in the event one is not able to meet a schedule or is not a good fit for the project.

### 3.2.4 Organizational Chart



### 3.2.5 Consultants

Bleyl Engineering has a vast menu of consultants that we have worked with on projects of varying kinds. The following table displays anticipated consultants to be used for this project.

Name	Firm	Address	Prior Working Relationship	Area of Expertise	License
John Gilroy	BG&D	9711 W. Mason Road, STE 125 PMB 326 Richmond, TX 77407	Consultant on Electrical engineering of facilities	Electrical Engineering	TX PE 112871
Drew Dudley	Dudley Engineering	40 Pamela Lane, College Station, TX 77845	Consultant on Structural Engineering	Structural Engineering	TX PE 123798
David Eastwood	GET	17407 US HWY 59 N Houston, TX 77396	MBE Geotechnical Consultant	Geotechnical Engineering	TX PE 51419
Michael Hall  Christopher Rhodes	Civil-Surv Land Surveying	10590 Westoffice Drive, Suite 100 Houston, Texas 77042	Consultant Land Surveyor	Land Surveying, Easements Title Deed Research	TX RPLS 5765  TX RPLS 6532
Steve McElyea,	SMC Consulting	3418 Pickering Lane Pearland, TX 77584	Consultant Small Business Environmental Expert	Environmental Engineering, Wetlands, Army Corp Engineers	TX PE 74509
Mike Schnieders	Water Systems Engineering	3201 Labette Terrace Ottawa, KS 66067	Consultant Water Quality testing expert	Water Quality Testing	PG, PH-GW

### 3.2.6 MWBE Participation

Dudley Engineering is a WBE while GET is an MBE. SMC Consulting qualifies as a small business. The exact percentage of contracts to MWBE business is not known until a contract is established. Bleyl has worked closely with each of these MWBE firms in the past on similar styles of projects.



### 3.3 Resource Utilization Plan

3.3.1 Labor Resources: The Engineering Firm shall include a brief statement describing how staff will be provided, allocated and balanced during sickness, attrition, and periods of increased workloads.

Bleyl Engineering strives to serve our clients with ingenuity, integrity, and service. This includes ensuring that adequate staff are available for the needs of our various clients. In doing so, scheduling for design projects, construction, and meetings is critical to keep projects and goals in line. Bleyl Engineering executives and project managers benefit from more than 25 years of institutional knowledge in projecting workloads, anticipating client needs, planning for resources needed, and managing individual projects to meet schedules, adhere to budgets, and remain responsive to City staff.

Bleyl Engineering operates using industry-standard planning and scheduling applications. Our personnel are trained, monitored, and evaluated on adherence to project plans. We maintain active recruiting, onboarding, and training of qualified personnel at all levels of the organization to maintain ample levels of expertise. Bleyl Engineering has established a lengthy and enviable record of performance and responsiveness.

#### (a) TEAM CAPABILITY

We are well-versed in managing multiple projects simultaneously and delegating workloads to handle work efficiently. Project deliverables, schedules, budgets, and any project issues are discussed at weekly internal staff meetings where adjustments can be made quickly. The Bleyl team selected has worked together previously on multiple successful projects.

#### (b) CONTINGENCY PLAN

Bleyl purposefully cross-trains each engineer on water, wastewater, roadways, traffic, pedestrian facilities, drainage, and other civil engineering-related items. This diversified approach provides each project with an abundance of resources to accommodate schedule changes or team member unavailability. Should the loss of a team member occur, an alternate team member can immediately fill the responsibilities per the following chart.

<b>Role</b>	<b>Team Member</b>	<b>Replacement</b>
Client Manager	Travis Walker	Blake Barringer
Project Manager	Jonny Green	Carl Rushing
Assistant Project Manager	Morgan Brown	Koy Sanson
Technical Expert	Steve Duncan	Jonny Green
QA/QC	Mike Kelly	Steve Duncan
Construction Manager	Pat Riley	Emil Rebik



3.3.2 Equipment Resources: The Engineering Firm shall list all pieces of office and/or field equipment which is owned, or that it has direct access to, that is pertinent to this project.

**Office Equipment:**

- Computers, miscellaneous software for use in drafting, designing, calculating, and preparing project documents.
- Software: Microsoft Products, AutoCAD products, ArcGIS products, Bentley products for modeling, and more.
- Miscellaneous office supplies, and other typical office furnishings/equipment.

**Field Equipment:**

- GPS survey unit
- Drone, including licensed drone pilots.
- Field reconnaissance tools such as measuring tapes, measuring wheels, rods, lathes, wrenches, pressure loggers, manhole lid puller, camera's and more.
- Miscellaneous personal protective equipment.

### 3.4 Workload Status

3.4.1 Based on the Engineering Firm's current workload and staffing, indicate the current percentage of capacity at which the Engineering Firm is operating. Indicate the current backlog (if any) of the assignments in months.

Bleyl Engineering has a steady backlog, estimated at 6 plus months of work. Each of these projects has varying schedules. As discussed in section 3.3.1, Bleyl's intentional cross-training of aids in our ability to adjust schedules, workloads, and priorities as needed to ensure our clients are being served well. Bleyl's Vision is "To be a foundation for the advancement of stronger, safer communities across Texas." Balancing workloads, schedules, and client milestones is one of the critical aspects of following our vision.

3.4.2 Based on current assignments, backlogged assignments and known future assignments not currently in-house, indicate the percentage of capacity that the Engineering Firm will be operating during the time indicated in the RFQ and the ability to meet the time constraints for completion of the project tasks while completing other prior committed workloads which involve members of the team identified for assignment to this project.

Bleyl Engineering aims to operate at 95+% efficiency. As stated in response to section 3.4.1, as a staff we meet weekly as design teams and bi-weekly as team leads to discuss schedules, workloads, and deadlines to ensure our clients' milestones, goals, and deadlines are being met.

### 3.4.3 Identify the percentage of time key personnel will devote to this project.

Each stage of the project will require varying levels of time and devotion. Initial project and field reconnaissance will have a heavy time demand to ensure the project starts with good traction. As some potential water quality testing, field surveys, geotechnical soil testing, or other consultants are gathering information, Bleyl's weekly time commitment will be reduced until preliminary engineer analysis and design begin.

### 3.4.4 Identify tasks to be completed locally, by an identified associated office or by an identified subcontractor.

Overall project management, client coordination, TWDB coordination, permitting, agency submittals, bidding, and construction management will be the responsibility of Bleyl directly, managed out of our Conroe office. Surveying, geotechnical investigations, water sampling, environmental analysis, electrical engineering, structural engineering, treatment pilot studies, and Bleyl will manage via the selected sub-consultant services.

Water sampling and testing can be conducted by local are labs, however, Bleyl has had a great relationship working with Water Systems Engineering, a laboratory based in Kansas for groundwater sampling. This laboratory conducts detailed sampling and analysis of groundwater samples to identify any active bacteriological colonies within the water well, near by aquifer, and provide recommended remediation efforts.

## 3.5 Experience

### Our Public Clients:

#### CITY ENGINEER

City of Calvert  
City of Centerville  
City of Cleveland  
City of Franklin  
City of Iola  
City of Panorama Village  
City of Plantersville  
City of Shenandoah  
City of Willis  
Town of Anderson

#### DISTRICT ENGINEER

Prestonwood Forest UD  
Montgomery County UD 4  
Porter SUD  
Charterwood MUD  
East Montgomery County MUD 4  
East Plantation MUD  
Lake Conroe Hills MUD  
Montgomery County MUD 9  
Montgomery County MUD 16  
Montgomery County MUD 18  
Northwest Harris County MUD 28  
Northwest Harris County MUD 30  
North Zulch MUD  
Stanley Lake MUD  
Texas National MUD  
Cooks Point WSC  
Dobbin-Plantersville WSC  
Grantwoods WSC  
Beach City WCID  
Harris County WCID 92  
Anderson Water Company

#### CONSULTING ENGINEER

City of Brenham  
City of Bryan  
City of Cedar Park  
City of College Station  
City of Conroe  
City of Fulshear  
City of Hempstead  
City of Magnolia  
City of Navasota  
City of Trinity  
Brazos County  
Burleson County  
Grimes County  
Montgomery County  
Robertson County  
San Jacinto County  
Walker County  
Washington County  
Harris County Engineering  
Harris County Flood Control

**Porter SUD  
Ford Road Waterline Relocation**

Design of a waterline upsize and replacement along Ford Road in conjunction with a Montgomery County road widening project. This project included over 16,000 LF waterline ranging from 8-16 inch. The project required working around existing waterlines, sewer lines, gas lines, underground electric, above ground electric, and communication lines. The existing waterline had to remain in service until the new line passed all required testing before transferring the services to the new line. This project required crossing a Union Pacific Rail Road and a TxDOT Roadway. Design and construction challenges included routing the new waterline around congested areas containing many existing dry utilities and working around high traffic areas.

Key Personnel: Carl Rushing, PE, Mike Kelly, PE

Date/Cost: 2023/ \$3.7M

Client Reference: Doug Pillow, Director  
[REDACTED]

---

---

**City of Willis Water Plants 1 & 3 Improvements**

Design of improvements to two of the City’s three water plants to serve a rapidly growing population. Improvements include elevating existing cooling towers, removing transfer pumps, and new 1,400-gallon per minute booster pumps at both plants, a new 350,000-gallon ground storage tank at Water Plant No. 3, a new control building at Water Plant No. 1, and associated electrical, piping, chemical treatment, and other improvements. Scope includes design, agency coordination, managing

sub-consultants, bidding, and construction administration.

Key Personnel: Jonny Green, PE, Derek Wind, PE

Date/Cost: 2023/ \$3.7M estimated

Client Reference: Sheyi Ipaye, CPM:  
[REDACTED]

---

---

**City of Conroe Water Plant No. 25**

Design of a new water plant, including an 1,800-gallon per minute water well, a 1,000,000-gallon Type III Prestressed Concrete Ground Storage Tank, three 750-gpm booster pumps, pump and controls building with overhead crane, chlorine disinfection and polyphosphates systems for water quality, 10,000-gallon hydropneumatic tank, yard piping, drainage improvements, a 2,600-linear foot water line extension, and coordination with the City of Conroe, Montgomery County, TCEQ, TxDOT, and pipeline companies. The project is complete and in service.

Key Personenel: Jonny Green, PE, Travis Walker, PE

Date/Cost: 2021/\$6.4M

Client Reference: Chris Bogert, City Engineer  
[REDACTED]



### **East Plantation Utility District Water Quality Study**

Bleyl is currently work on a water quality study for improvements to the District's water system as a result of foul smelling and discolored water throughout the system. The project is currently under analysis and design. Water quality results from Water Systems Engineering have been received and well rehabilitation is scheduled for Q3 of 2024, once peak water usage months have passed.

Key Personnel: Travis Walker PE, Koy Sanson, EIT  
Date/Cost: 2024/estimated \$0.3M  
Client Reference: Simon Atkinson, Board President  
[REDACTED]

---

### **Porter SUD Water Quality Study**

Bleyl is currently work on a water quality study for improvements to a District well that has began producing foul water. The water results in taste and odor complaints from the District's customers. The project is currently in the PER phase as pilot studies and filtration options have been flushed out in recent years. Water quality results from Water Systems Engineering have been received and well rehabilitation is scheduled just prior to the filters comign online.

Key Personnel: Carl Rushing, PE, Mike Kelly, PE  
Date/Cost: 2023/ (under design)  
Client Reference: Jonathon Smith, General Manager [REDACTED]

---

### **City of Shenandoah ACP Waterline Replacements**

Design and coordination for the abandonment and repalcement of sevearl thousand feet of asbestos cement pipe waterlines throughout the City of Shenandoah. Project inlcuded field investigations to identify pipe locations and feasibility for replacing with new PVC lines.

Key Personnel: Blake Barringer, PE  
Date/Cost: 2023/\$0.4M  
Client Reference: Joseph Peart, Public Works Director [REDACTED]

---

### **Shenandoah Water Plant No. 4, *Planning, Design, and Project Manager***

Planning, design, and project management for a 1,600 GPM Water well and water plant with MCC / Chlorine Building, Ground Storage Tank and Hydropneumatic Pressure Tank. Project was designed with planning in mind to construct an alternative water well with reverse osmosis treatment in the future. Project also required coordination with the U.S. Army Corps of Engineers to mitigate impacts to wetlands within the waters of the U.S.

Key Personnel: Derek Wind, PE  
Date/Cost: 2018/\$3.0M  
Client Reference: Kathie Reyer, City Manager [REDACTED]

---

- 1. Porter SUD – Jonathon Smith, General Manager, [REDACTED]**  
District Engineer since 2006.
  - a. Relevant projects:
    - i. Surface Water Plant Pilot Study – Project Management - 2017
    - ii. Ferne Water Plant - 2023
    - iii. Copeland Lane Water Plant Improvements - 2019
    - iv. Water Well 8 Water Quality Study-2023 - (in progress)
    - v. Misc. Distribution System rehabilitation - (ongoing)
    - vi. System wide Water Modeling (11,000+ESFC's) - (ongoing)
  
- 2. City of Shenandoah – Kathie Reyer, City Administrator, [REDACTED]**  
City Engineer since 2002.
  - a. Relevant Projects:
    - i. Water Plant No. 2 Rehabilitation - 2022,
    - ii. System Wide Water Modeling (1,300+ ESFCs) - (ongoing)
    - iii. Water Plant No. 4 - 2018
    - iv. Misc. Distribution System Improvements – (ongoing)
  
- 3. Montgomery County MUD 18, Susan McFarland, [REDACTED]**  
District Engineer since 2006
  - a. Relevant Projects
    - i. Water Plant Rehabilitations
    - ii. Water Plant Improvements
  
- 4. Stanley Lake MUD – Kerry Mason, Board President, [REDACTED]**  
District Engineer since 2005
  - a. Relevant Projects
    - i. Water Plant Rehabilitations
    - ii. Water Plant Improvements
    - iii. Water Quality analysis – Temperature and TDS
  
- 5. City of Conroe – Chris Bogert, City Engineer, [REDACTED]**  
Consulting Engineer since 2007
  - a. Relevant Projects
    - i. Water Plant Rehabilitation - 2018
    - ii. Water Plant Improvements - 2022
    - iii. Water Plant 25 – 2021
  
- 6. City of Navasota – Jason Weeks, City Manager, [REDACTED]**  
Consulting Engineer since 2014
  - a. Relevant Projects
    - i. System Wide Water Model -2021
    - ii. Distribution System Improvements 2015

# APPENDIX A – 3.9 Submittal Signature

3.9 Submittal Shall Be Signed In Accordance With The Following Format:

\_\_\_\_\_  
(Signature of the Firm)

\_\_\_\_\_  
Signature

John D. Bleyl, P.E.

Name (typed)

03/08/24

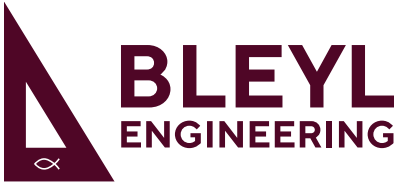
Date

President and CEO

Title

# APPENDIX B – Statement on Insurance





(936) 441-7833

100 Nugent Street, Conroe, TX 77301

bleylengineering.com

Texas Firm No. F-678

8 March 2024


Ms. Lindsay Koskiniemi  
City Manager  
City of Sweeny  
102 W. Ashley Wilson Rd.  
Sweeny, Texas 77480

Re: Statement Concerning Insurance

Dear Ms. Koskiniemi,

Bleyl Engineering will provide general liability insurance, worker's compensation, and professional liability insurance as required for the project within 10 calendar days of the Notice of Award.

Please contact me with any questions.



John D. Bleyl, PE  
President and CEO

# APPENDIX C – Conflict of Interest Statement



## CONFLICT OF INTERERST STATEMENT

I certify that the following statement is true with respect to the Request for Qualification for Engineering Planning, Design and Construction Management Services for the TWDB-DWSRF Water System Improvements Project for the City of Sweeny, Texas.

1. No principal or employee of this firm has offered or promised to pay or deliver directly or indirectly, any commission, political contribution, gift, favor, gratuity, benefit, or reward as an inducement to secure this assignment.
2. No employee, officer, or agent of the City of Sweeny, or their immediate family members, has financial or other interest in this firm.
3. This firm will not engage in construction contracting or in the supply of goods, materials and/or equipment for the construction of this project.
4. This firm is not associated or affiliated, either directly or indirectly, with firms, individuals, or commercial organizations that have a vested interest in the construction of this project.

  
Signed by Principal of Firm

John D. Bleyl, P.E.

Name Typed

President and CEO

Title