

610 Walnut Pool

REVISED

10/14/21 email

Revised to meet
Setbacks

PAGE 1 OF 2

BUYER: **TOWEL DOWN CONCRETE** SHALL LEAST TWICE DAILY FOR SEVEN DAYS.

VACUUM LINE TO POOL

VACUUM KIT

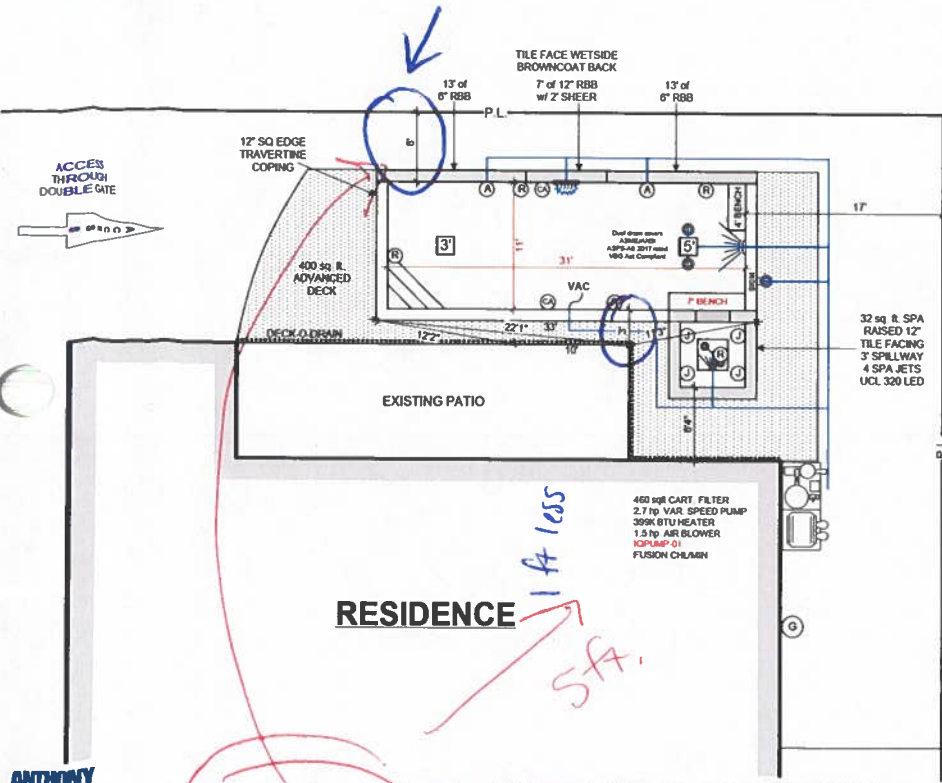
MANUAL FILL LINE

A&S WHITE MINI PEBBLE

NO STORM WATER WILL FLOW TO NEIGHBORS PROPERTY

All Gates to be self closing and self latching

B.M. & T.O.F. T.B.D. BY P.M. @ L.O.



Item	Quantity	Unit	Description
Pool Deck	1	Sq Ft	12" SQ EDGE TRAVERTINE COPING
Spa	1	Sq Ft	32 sq ft SPA RAISED 12" TILE FACING 12" SPA JETS UCL 320 LED
Filter	1	Cart	460 sq ft CART FILTER
Pump	1	HP	2.7 hp VAR. SPEED PUMP
Heater	1	BTU	390W BTU HEATER
Blower	1	HP	1.5 hp A&S BLOWER
Chlorinator	1	Unit	FUSION CHLORINATOR

Item	Quantity	Unit	Description
Skimmer Line	2'	FT	A-Skimmer Line
Skimmer Line	2'	FT	B-Skimmer Line
Main Drain	3'	FT	C-Main Drain
Returns	1.5'	FT	D>Returns
Pool Cleaner	1.5'	FT	E-Pool Cleaner
Spa Return	1.5'	FT	F-Spa Return
Spa Main Drain	2.5'	FT	G-Spa Main Drain
Air Line	1.5'	FT	H-Air Line
Additional	1.5'	FT	I-Additional
Total	15'	FT	Total

ANTHONY SYLVAN POOLS
BUILT FOR LIFE
Copyright © 2021 Anthony & Sylvan Pools Corp. All rights reserved. Reproduction or transmission prohibited without prior written permission of Anthony & Sylvan Pools.

NOTE	NOTE	NOTE
Changes from the agreement are by addendum only, signed by both parties and paid in full at time of affixing signature. No changes will occur prior to signing addendum.	To be numbered and referred to on Plan via Symbol	T.O.C. = ?

REVISIONS	Date	Description
Initial Draft	8.19.21	Scott Reeves
Redraw plan	10.7.21	Redraw plan

Brenda Lindsey - homeowner
Anthony + Sylvan Pools - Contractor

