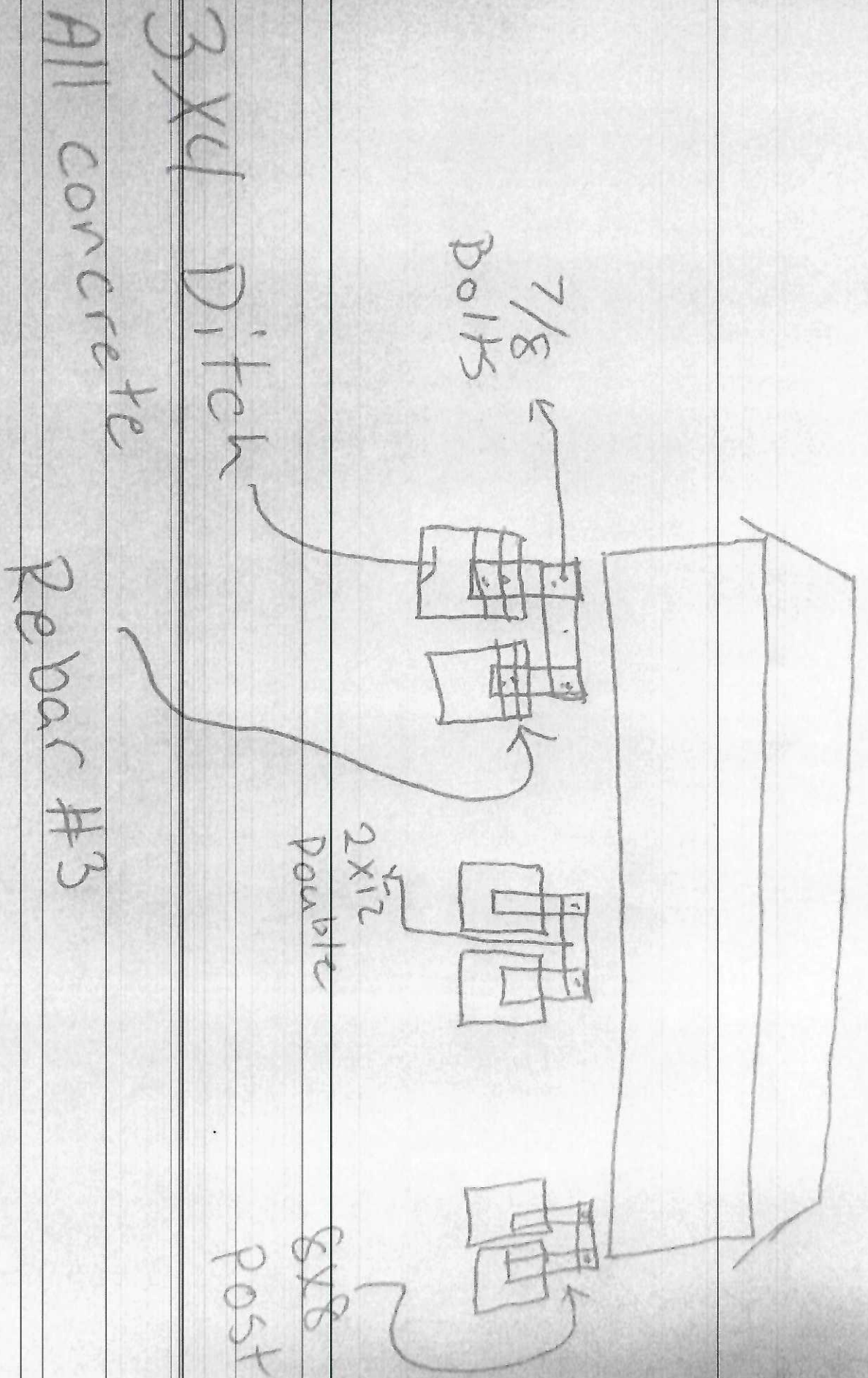


2'-0"
SHAFT
minimum

#5 DOWELS 16" LONG
THROUGH POST.
START BARS 3" FROM
TOP AND BOTTOM
W/9" VERTICAL SPACING
BETWEEN DOWELS.
ALSO INSTALL A CAGE
4-#3 REBAR VERTICAL.
W/#3 HORIZONTAL @
EA. DOWEL.

ADDITION WILL BE 160 SQ. FEET TO BACK SIDE OF CURRENT BUILDING



0

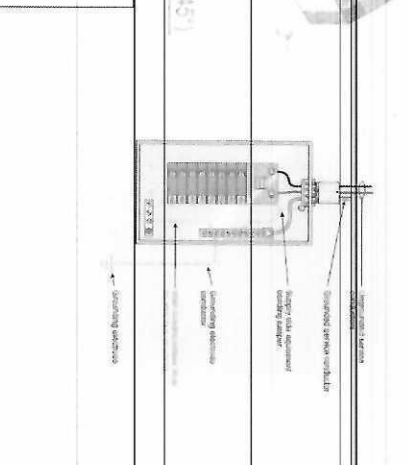
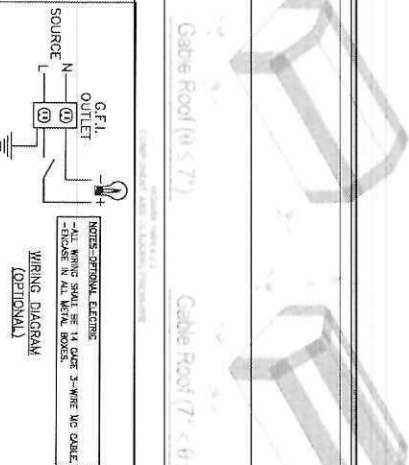
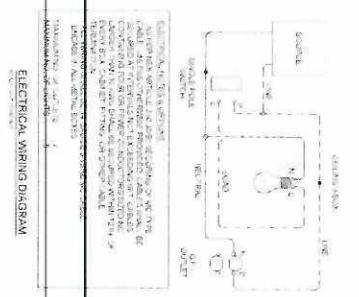
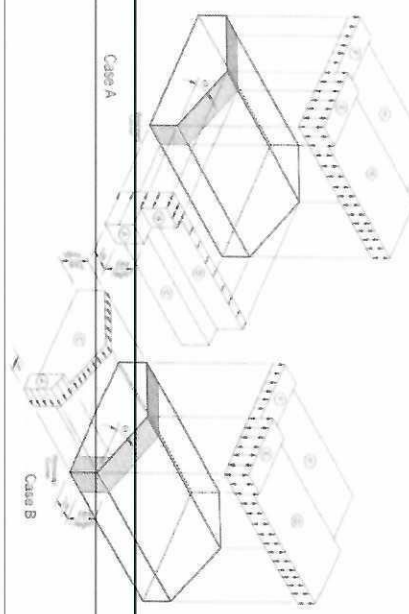
FASTENING SCHEDULE (2304.9-1, MRC)

CONNECTION	FASTENERS	LOCATION
1. JOIST TO SILL OR GIRDER	3 - 8d COMMON (25% x 0.117) 3 - 3/4" x 14 OCE STRIPES	TOP-WALL
2. BRIDGING TO JOIST	2 - 8d COMMON (25% x 0.117) 2 - 3/4" x 14 OCE STRIPES	TOP-WALL, EACH BID
3. GOLF PLATE TO JOIST OR BRIDGING	16d (25% x 0.137) @ 18" o/c 3/4" x 14 OCE STRIPES @ 12" o/c	TYPOCAL FACE WALL
4. GOLF PLATE TO JOIST OR BRIDGING @ BRIDGED WALL PANEL	2 - 16d (25% x 0.137) @ 18" o/c 4 - 3/4" x 14 OCE STRIPES @ 18" o/c	BRIDGED WALL PANELS
5. TOP PLATE TO STUD	2 - 16d (25% x 0.137) 2 - 3/4" x 14 OCE STRIPES	END WALL
6. STUD TO GOLF PLATE	4 - 8d COMMON (25% x 0.117) 4 - 3/4" x 14 OCE STRIPES 2 - 16d COMMON (25% x 0.137) 3 - 3/4" x 14 OCE STRIPES	TOP-WALL
7. DOUBLE STUDS	16d (25% x 0.137) @ 18" o/c 3/4" x 14 OCE STRIPES @ 12" o/c	FACE WALL
8. DOUBLE TOP PLATES	16d (25% x 0.137) @ 18" o/c 3/4" x 14 OCE STRIPES @ 12" o/c 8 - 16d COMMON (25% x 0.117) 12 - 3/4" x 14 OCE STRIPES	TYPOCAL FACE WALL UPR SPACE
9. BRIDGING BETWEEN JOISTS OR PRESSSES TO TOP PLATE	3 - 8d COMMON (25% x 0.117) 3 - 3/4" x 14 OCE STRIPES 3 - 3/4" x 14 OCE STRIPES	TOP-WALL
10. TOP PLATES, LIPS AND INTERSECTIONS	3 - 16d (25% x 0.137) 3 - 3/4" x 14 OCE STRIPES	FACE WALL
11. CONTINUOUS HANGER (2) PIECES	8 - 16d COMMON (25% x 0.117)	18" o/c ALONG EDGE
12. CONTINUOUS HANGER (2) PIECES	4 - 8d COMMON (25% x 0.117)	TOP-WALL
13. BUILT-UP CORNER STUDS	16d (25% x 0.137) @ 24" o/c 3/4" x 14 OCE STRIPES @ 18" o/c 3/4" x 14 OCE STRIPES @ 18" o/c	9" 2x4 o/c 9" 6" x 6" o/c 9" 18" x 6" o/c
14. DOUBLE TOP PLATES	20d (25% x 0.157) @ 32" o/c 3/4" x 14 OCE STRIPES @ 24" o/c 3/4" x 14 OCE STRIPES @ 24" o/c	FACE WALL @ TOP & BOTTOM STAGGERED ON GOLF STRIPS
15. JOIST TO BAND JOIST	3 - 16d COMMON (25% x 0.117) 4 - 3/4" x 14 OCE STRIPES	FACE WALL @ BIDS AND AT EACH SPACE
16. WOOD STRUCTURAL PANELS AND PERMITE BOARD STRUCTURE, ROOF AND WALL SHEATHING (TO FRAMING)	1/2" AND LESS 2x4x11.75 WALL 2x6x11.75 WALL 2x8x11.75 WALL 2x10x11.75 WALL	EXTER. WALL
17. 280d. STEEL STRONG (TO FRAMING)	1/2" TO 1" 1/2" TO 1" 1/2" AND LESS 1/2" TO 1" 1/2" TO 1/4"	10d OR 8d 10d OR 8d 10d OR 8d 10d OR 8d 10d OR 8d
18. PERFORATED SHEATHING	1/2" 3/8"	WALL @ 6" o/c IN FIELD AND 3" o/c ALONG ALL PANEL EDGES

SHEARWALL CHART

BUILDING WIDTH	OPENING WIDTH IN EXTERNAL WALL	MAX. LENGTH OF BUILDING	
		1/2" UP SHEARWALL PANELS	ALUMINUM OVER 1/4" OSEB
8'-0"	3'-0" MAX	24'-0"	24'-0"
10'-0"	3'-0" MAX	30'-0"	30'-0"
11'-2"	3'-0" MAX	36'-0"	36'-0"
14'-0"	3'-0" MAX	48'-0"	48'-0"
18'-0"	3'-0" MAX	60'-0"	60'-0"

1. COLUMN OR END WALL NOT REINFORCED TO BE USED EXCEPT WHERE OTHERWISE SPECIFIED.
2. WALLS SHOWN @ 6" o/c AT EDGES, 12" AT INTERMEDIATE SUPPORTS UNLESS OTHERWISE SPECIFIED. WALLS SHOWN @ 6" o/c AT EDGES AND 12" AT INTERMEDIATE SUPPORTS SHALL BE REINFORCED WITH 1/2" x 12" BARS AT EDGES AND 1/2" x 12" BARS AT INTERMEDIATE SUPPORTS.
3. COLUMN OR END WALL NOT REINFORCED TO BE USED EXCEPT WHERE OTHERWISE SPECIFIED.
4. COLUMN OR END WALL NOT REINFORCED TO BE USED EXCEPT WHERE OTHERWISE SPECIFIED.
5. COLUMN OR END WALL NOT REINFORCED TO BE USED EXCEPT WHERE OTHERWISE SPECIFIED.
6. COLUMN OR END WALL NOT REINFORCED TO BE USED EXCEPT WHERE OTHERWISE SPECIFIED.
7. COLUMN OR END WALL NOT REINFORCED TO BE USED EXCEPT WHERE OTHERWISE SPECIFIED.
8. COLUMN OR END WALL NOT REINFORCED TO BE USED EXCEPT WHERE OTHERWISE SPECIFIED.
9. COLUMN OR END WALL NOT REINFORCED TO BE USED EXCEPT WHERE OTHERWISE SPECIFIED.
10. COLUMN OR END WALL NOT REINFORCED TO BE USED EXCEPT WHERE OTHERWISE SPECIFIED.
11. COLUMN OR END WALL NOT REINFORCED TO BE USED EXCEPT WHERE OTHERWISE SPECIFIED.
12. COLUMN OR END WALL NOT REINFORCED TO BE USED EXCEPT WHERE OTHERWISE SPECIFIED.
13. COLUMN OR END WALL NOT REINFORCED TO BE USED EXCEPT WHERE OTHERWISE SPECIFIED.
14. COLUMN OR END WALL NOT REINFORCED TO BE USED EXCEPT WHERE OTHERWISE SPECIFIED.
15. COLUMN OR END WALL NOT REINFORCED TO BE USED EXCEPT WHERE OTHERWISE SPECIFIED.
16. COLUMN OR END WALL NOT REINFORCED TO BE USED EXCEPT WHERE OTHERWISE SPECIFIED.
17. COLUMN OR END WALL NOT REINFORCED TO BE USED EXCEPT WHERE OTHERWISE SPECIFIED.
18. COLUMN OR END WALL NOT REINFORCED TO BE USED EXCEPT WHERE OTHERWISE SPECIFIED.
19. COLUMN OR END WALL NOT REINFORCED TO BE USED EXCEPT WHERE OTHERWISE SPECIFIED.
20. COLUMN OR END WALL NOT REINFORCED TO BE USED EXCEPT WHERE OTHERWISE SPECIFIED.



AREA FOR APPROVAL STAMPS

PRODUCT: UTILITY SHED

FASTENING SCHEDULE / WIND LOADING

DON VAN GEWIE, P.E.
SPECIALTY STRUCTURAL ENGINEER
860-500-9180

ALTERNATE DESIGN SOLUTIONS
1001 S. 40TH AVENUE, SUITE 200
DENVER, CO 80202

ENGINEERING SERVICES PROVIDED FOR:
PREMIER-FORRESTER-BUILDINGS
317 EAST STATE LINE ROAD
SOUTH PLUM, IN 46257
WWW.FORRESTERBUILDINGS.US

REVISION	DESCRIPTION	DATE	BY
1			
2			
3			
4			
5			

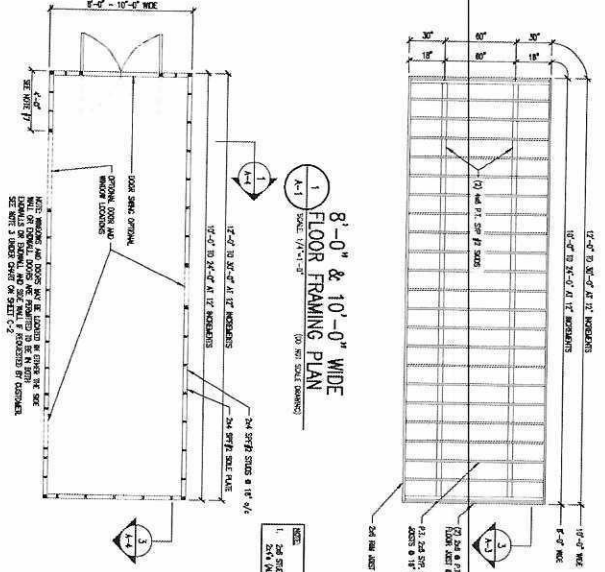
DATE: 4/17/23
PROJECT NO.: 18095
DRAWING BY: JH
DATE BY: DWS

DWG NO.: C-2

4/17/23

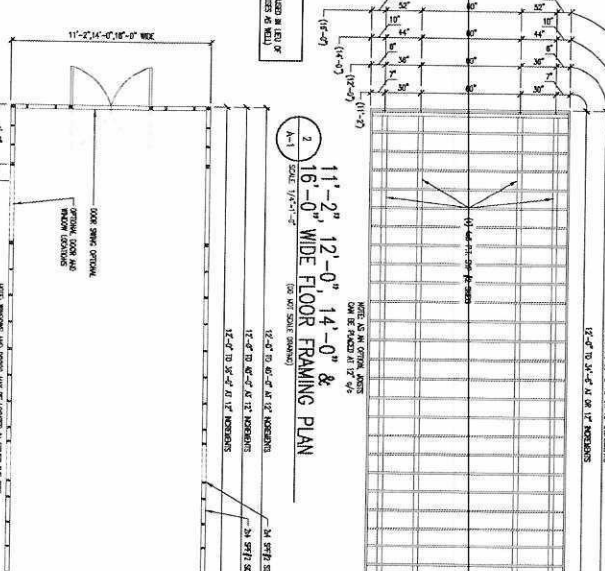
2 of 11

AREA FOR APPROVAL STAMPS



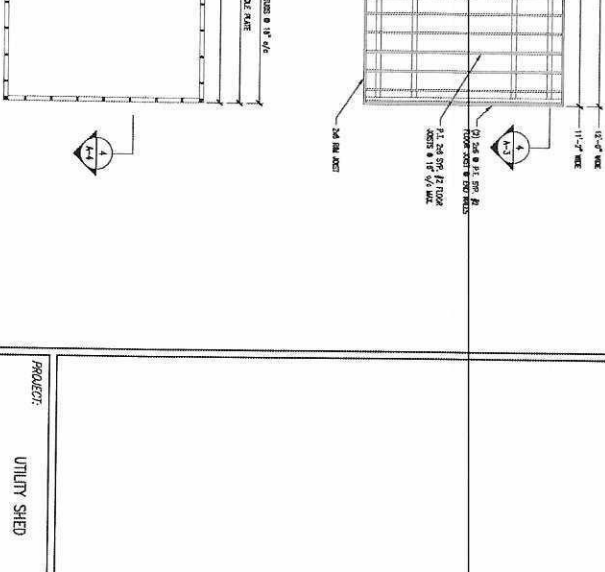
1 FLOOR FRAMING PLAN
SCALE: 1/4"=1'-0"

- NOTES:
- 2x4 STUDS SHALL BE LAPPED IN HALF OF FULL OF JOINTS AND BE FASTENED TO BE IN 18" SPACING.
 - 2x4 STUDS SHALL BE LAPPED IN HALF OF FULL OF JOINTS AND BE FASTENED TO BE IN 18" SPACING.



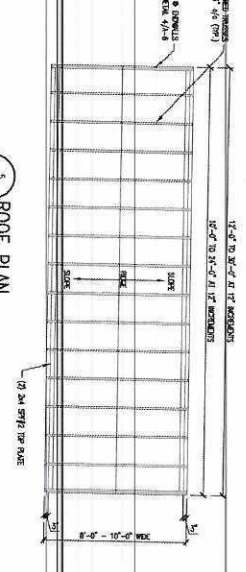
2 11'-0" 12'-0" 14'-0" & 16'-0" WIDE FLOOR FRAMING PLAN
SCALE: 1/4"=1'-0"

- NOTES:
- 2x4 STUDS SHALL BE LAPPED IN HALF OF FULL OF JOINTS AND BE FASTENED TO BE IN 18" SPACING.
 - 2x4 STUDS SHALL BE LAPPED IN HALF OF FULL OF JOINTS AND BE FASTENED TO BE IN 18" SPACING.

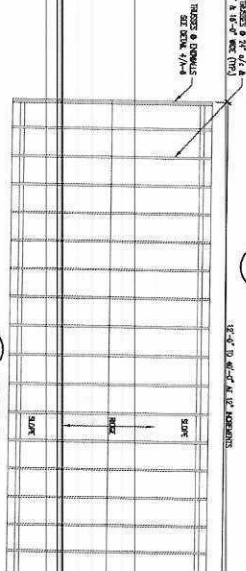


3 FLOOR DECK PLAN
SCALE: 1/4"=1'-0"

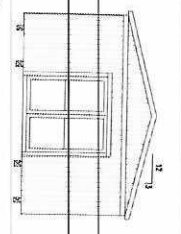
4 FLOOR DECK PLAN
SCALE: 1/4"=1'-0"



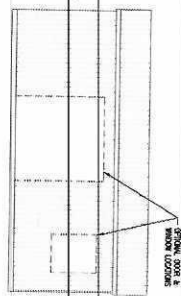
5 ROOF PLAN
SCALE: 1/4"=1'-0"



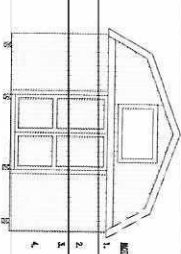
6 ROOF PLAN
SCALE: 1/4"=1'-0"



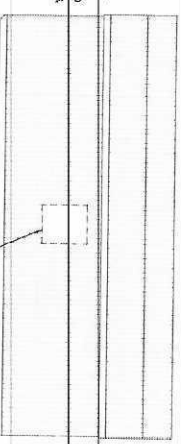
7 GABLE ENDWALL ELEVATION
SCALE: 1/4"=1'-0"



8 SIDEWALL ELEVATION
SCALE: 1/4"=1'-0"



9 GAMBREL ENDWALL ELEVATION
SCALE: 1/4"=1'-0"



10 SIDEWALL ELEVATION
SCALE: 1/4"=1'-0"

REVISION	DESCRIPTION	DATE	BY

ENGINEERING SERVICES PROVIDED FOR
PREMIER-PORABLE-BUILDINGS
317 EAST STATE LINE ROAD
SOUTH FULTON, TN 38257
WWW.PORABLEBUILDINGS.US

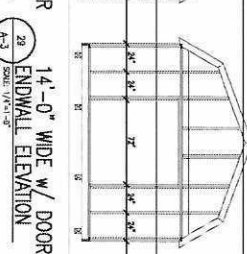
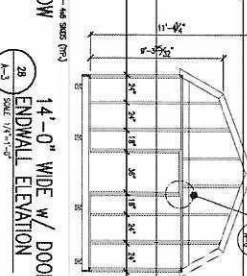
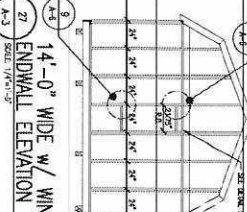
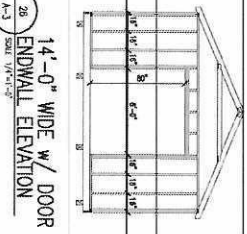
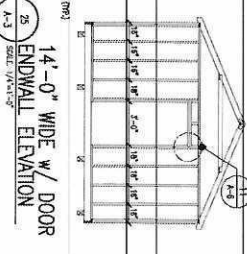
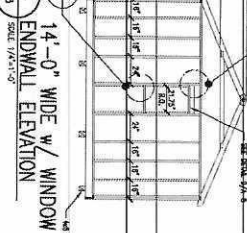
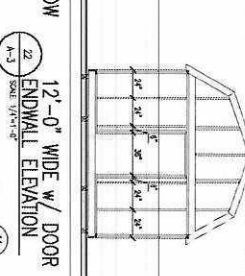
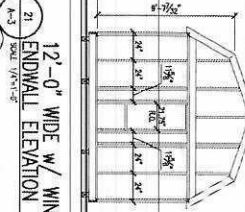
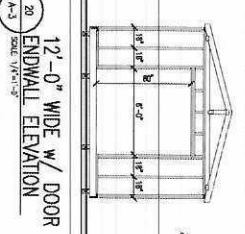
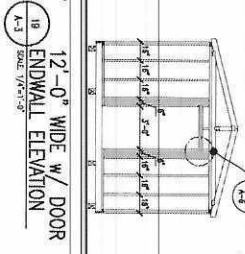
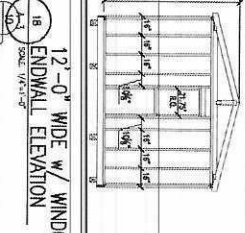
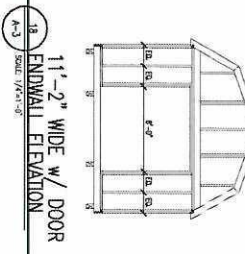
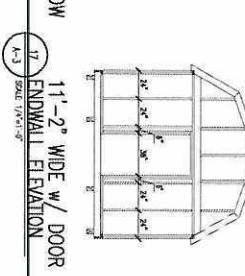
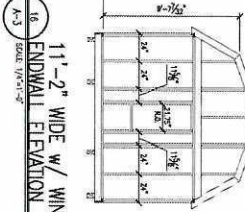
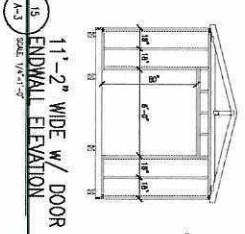
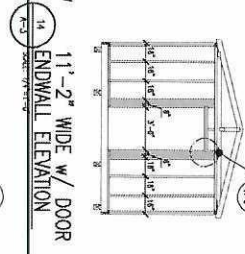
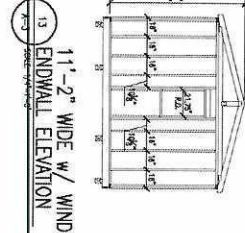
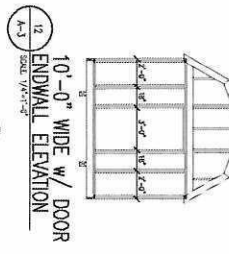
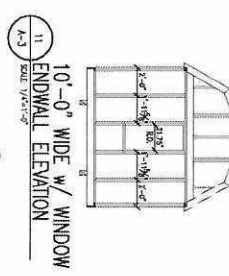
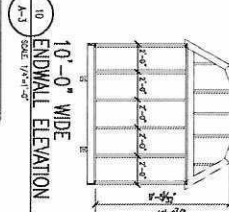
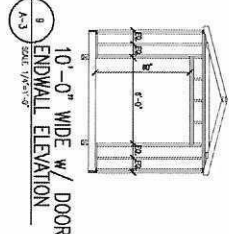
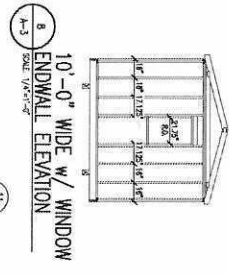
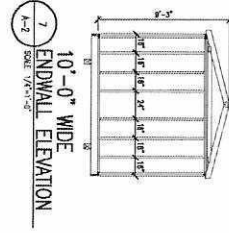
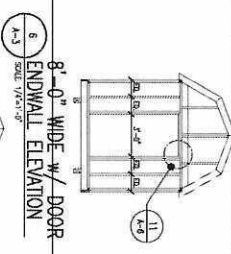
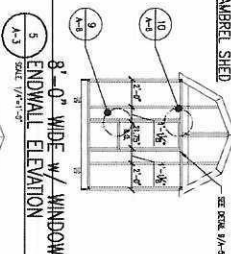
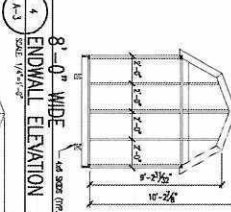
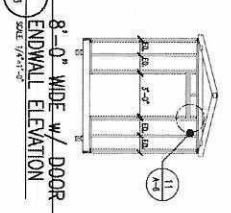
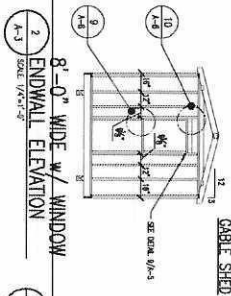
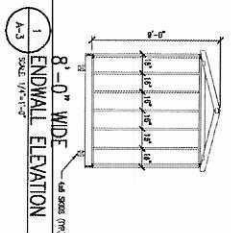
DATE: 4.17.23
PROJECT NO.: 18008
DRAWING NO.: 016
DWG NO.: A-1



AREA FOR APPROVAL STAMPS

GABLE SHED

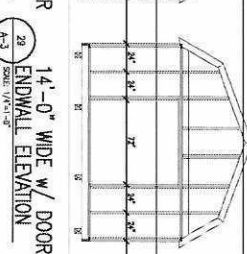
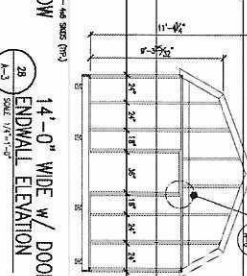
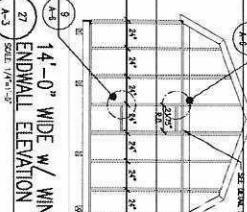
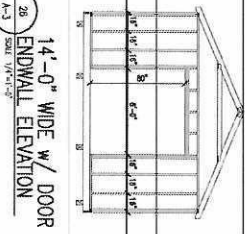
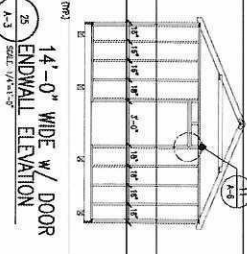
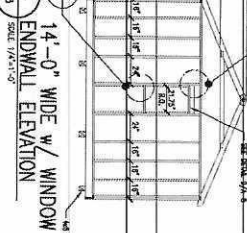
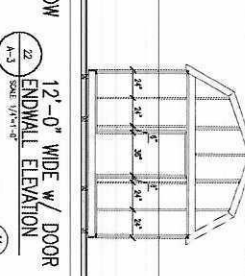
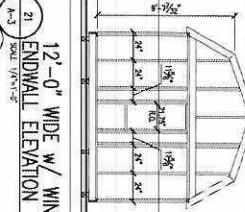
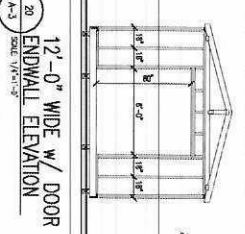
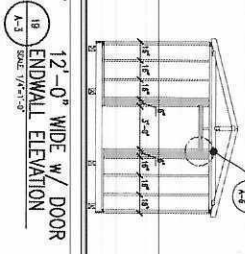
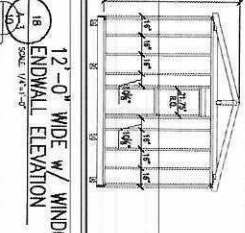
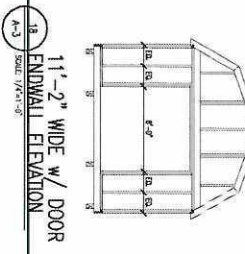
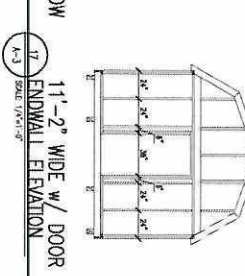
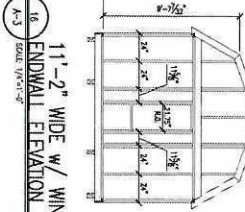
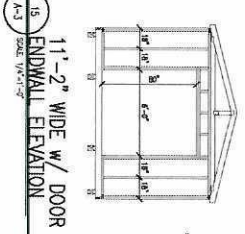
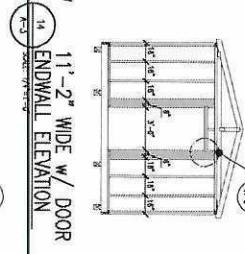
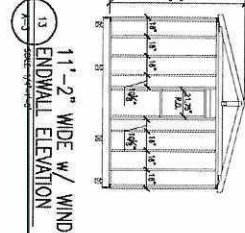
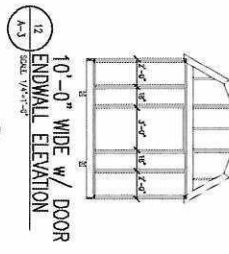
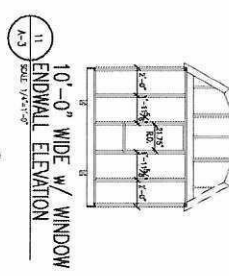
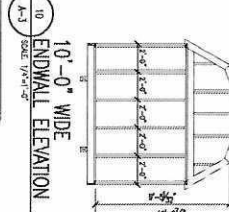
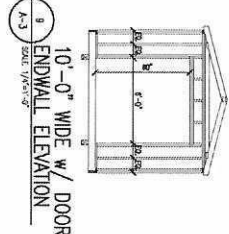
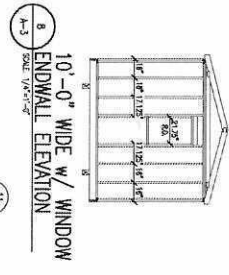
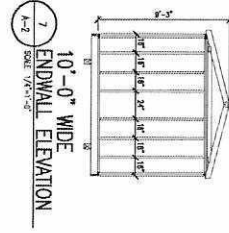
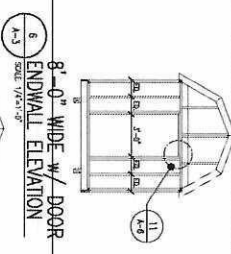
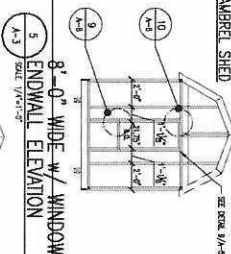
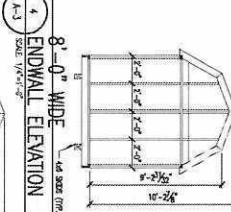
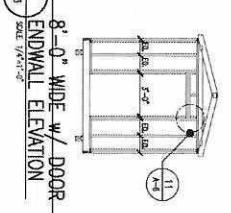
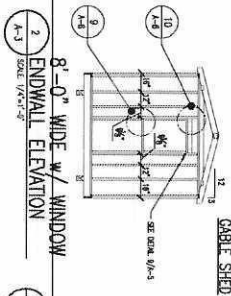
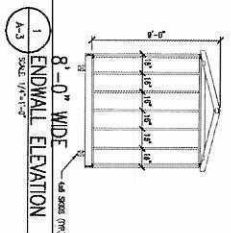
GAMBREL SHED



AREA FOR APPROVAL STAMPS

GABLE SHED

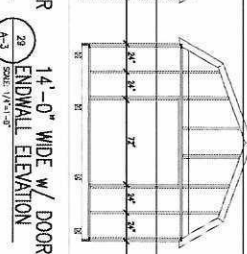
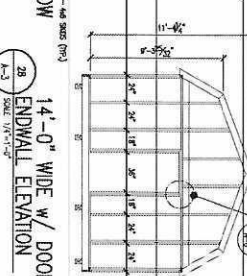
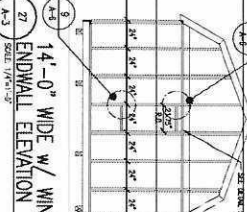
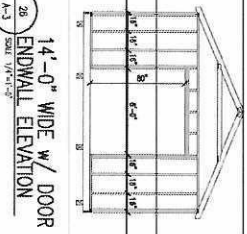
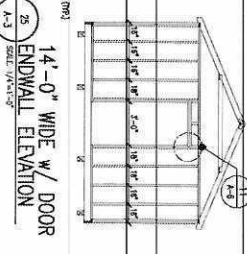
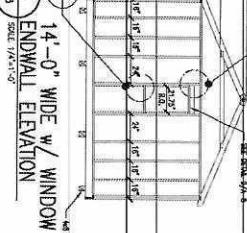
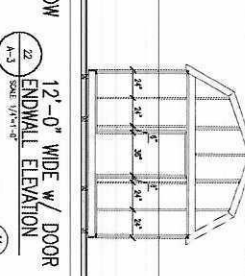
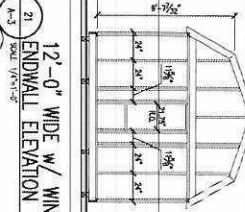
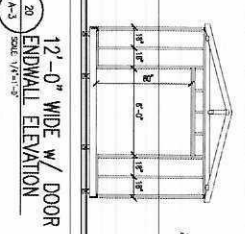
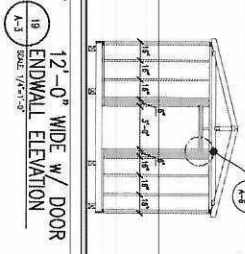
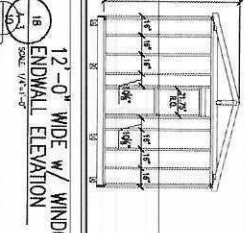
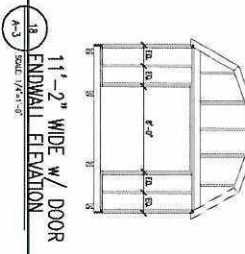
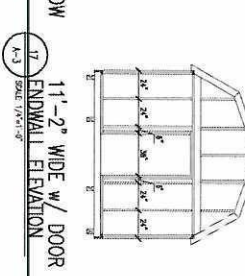
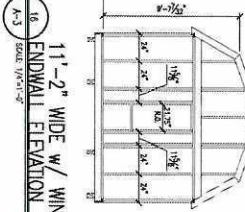
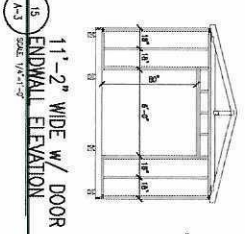
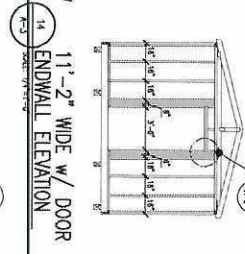
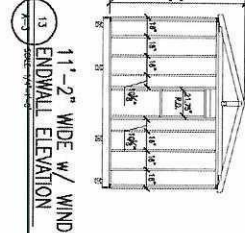
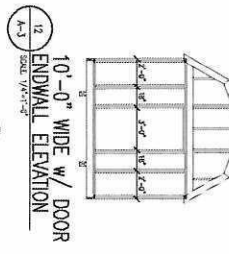
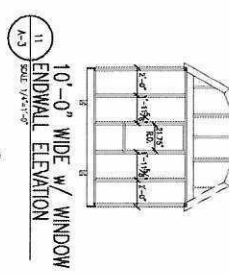
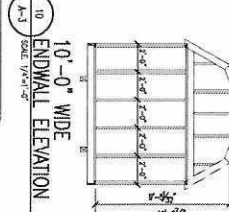
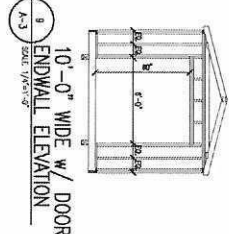
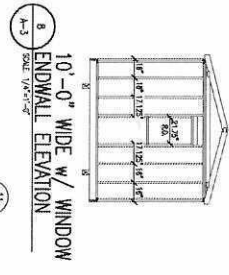
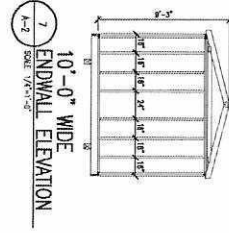
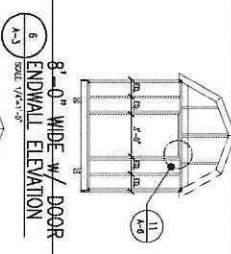
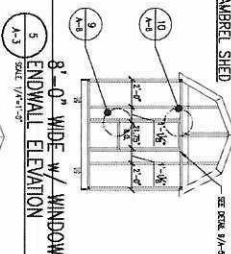
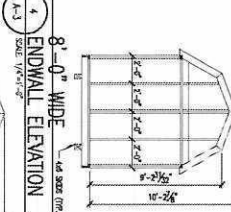
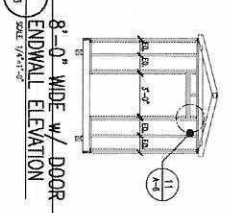
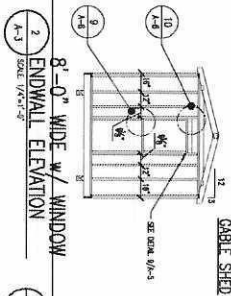
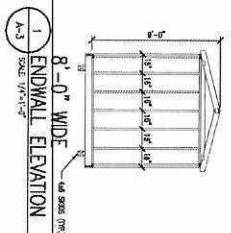
GAMBREL SHED



AREA FOR APPROVAL STAMPS

GABLE SHED

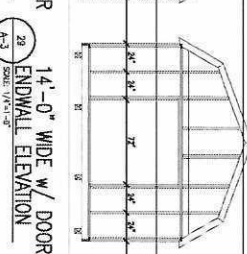
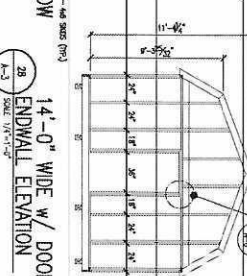
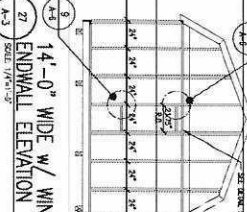
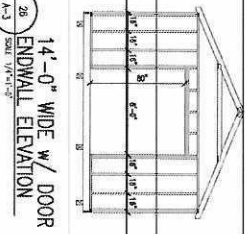
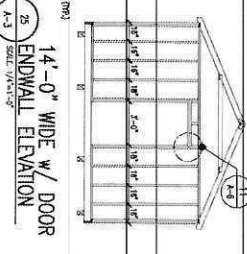
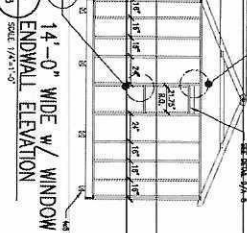
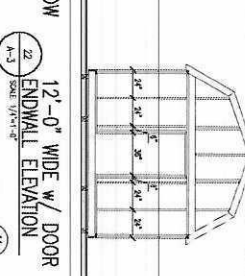
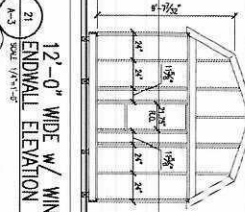
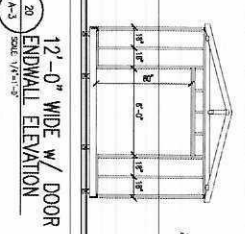
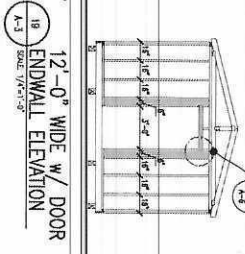
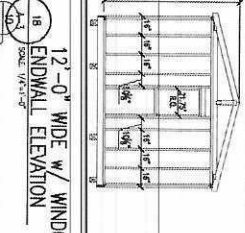
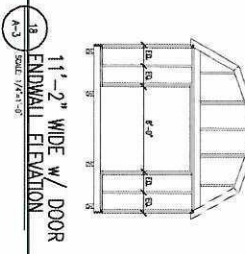
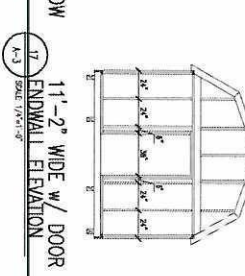
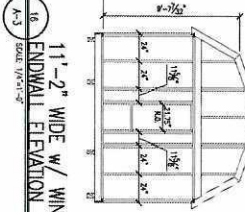
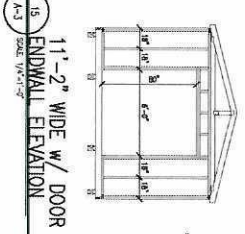
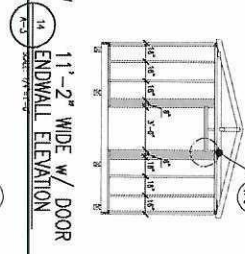
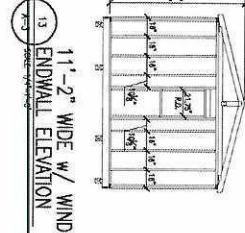
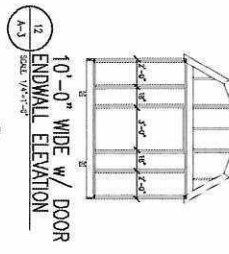
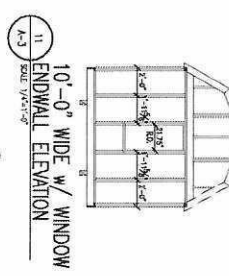
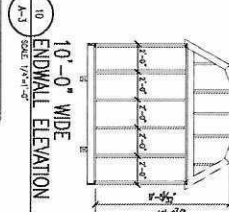
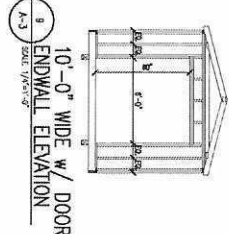
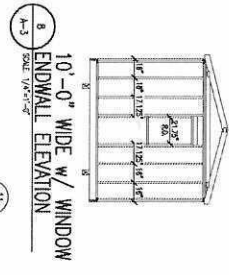
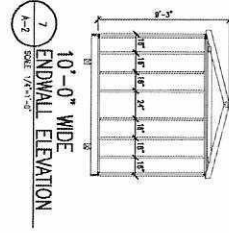
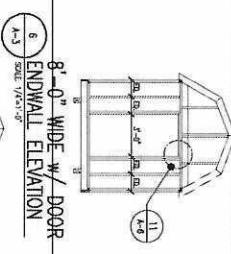
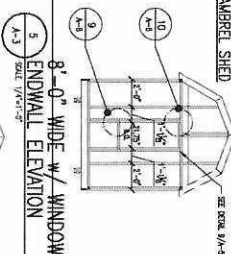
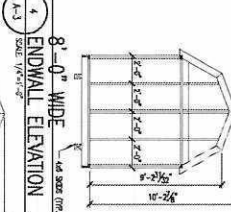
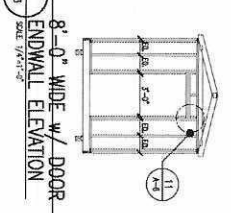
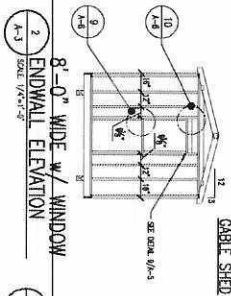
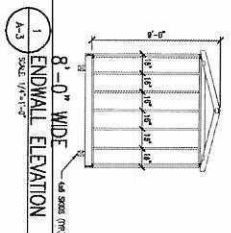
GAMBREL SHED



AREA FOR APPROVAL STAMPS

GABLE SHED

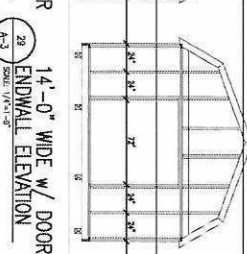
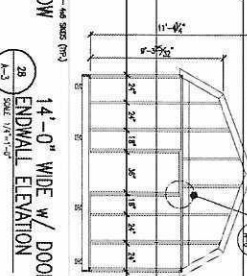
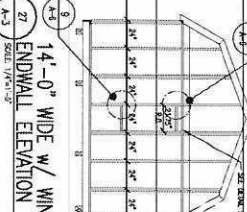
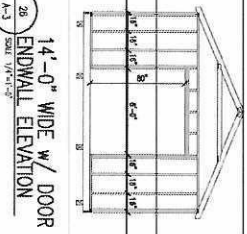
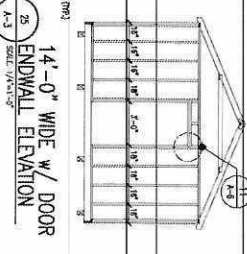
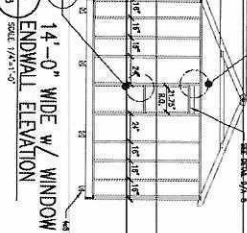
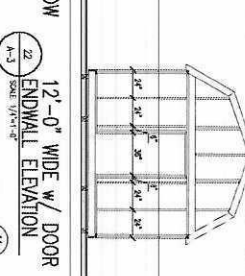
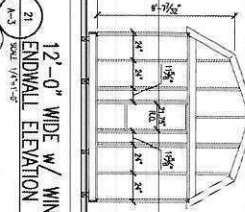
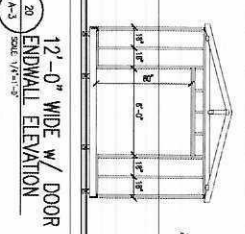
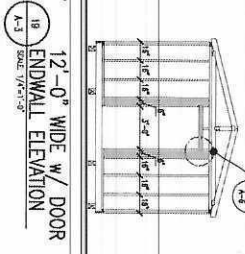
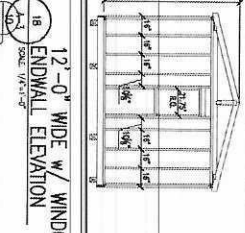
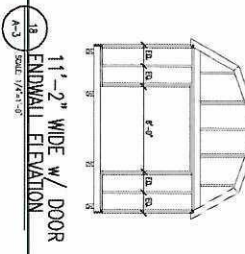
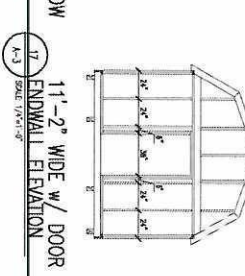
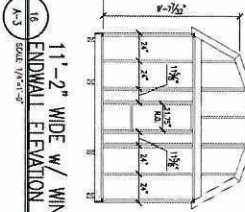
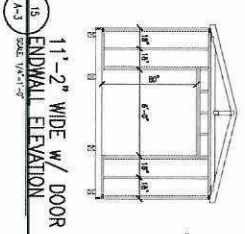
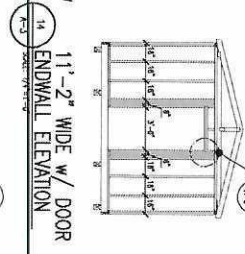
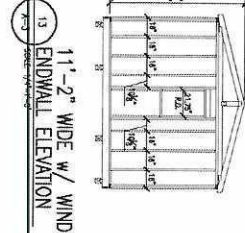
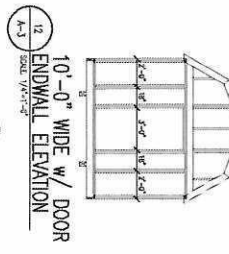
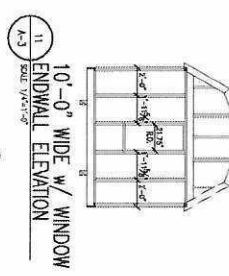
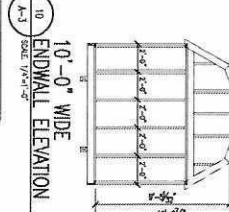
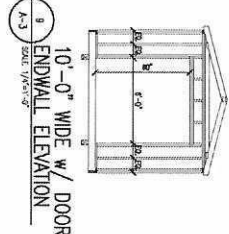
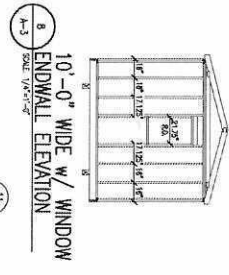
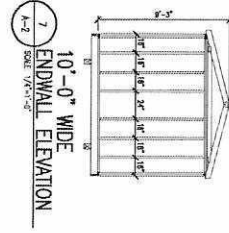
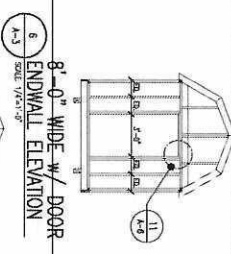
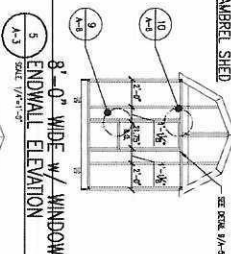
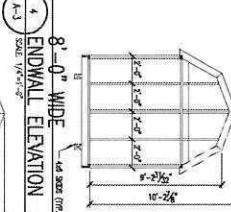
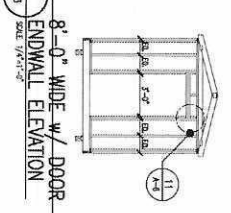
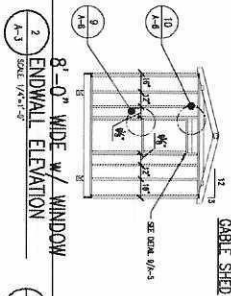
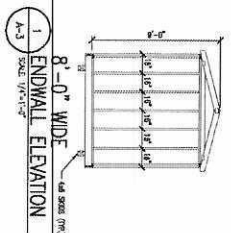
GAMBREL SHED



AREA FOR APPROVAL STAMPS

GABLE SHED

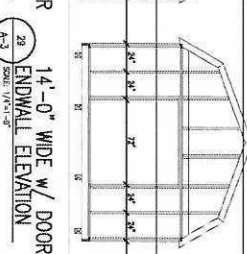
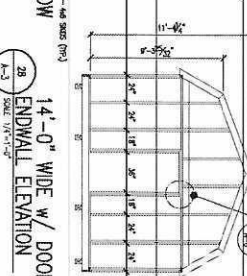
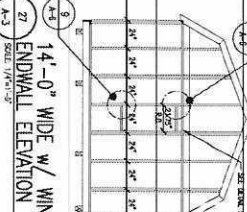
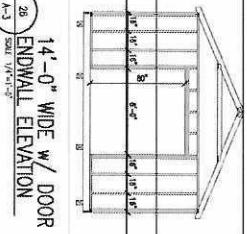
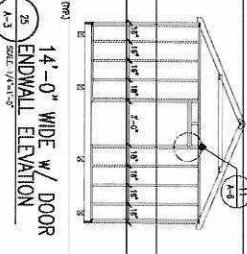
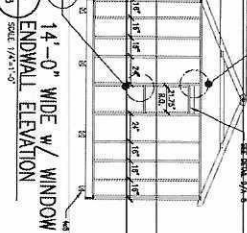
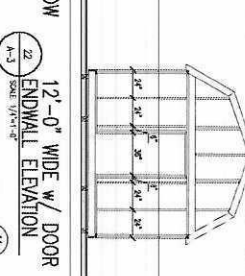
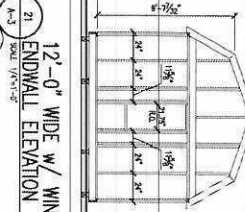
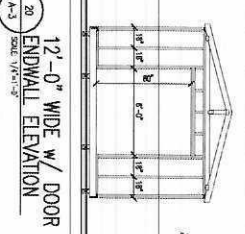
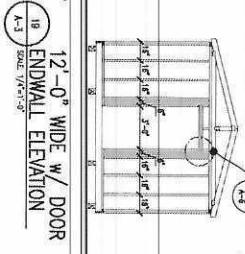
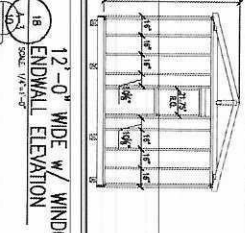
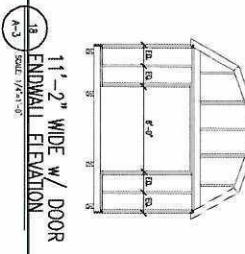
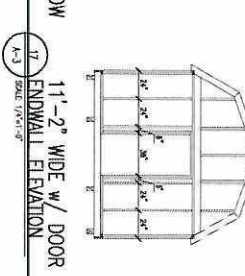
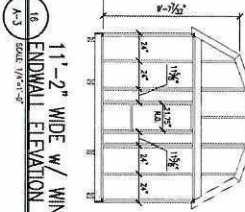
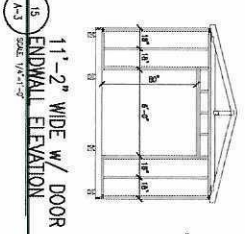
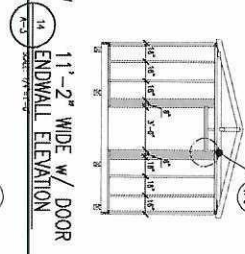
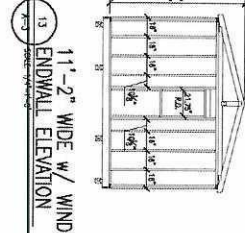
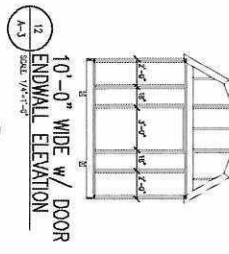
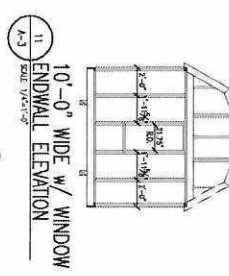
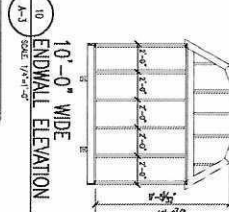
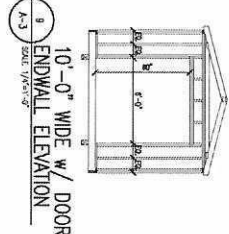
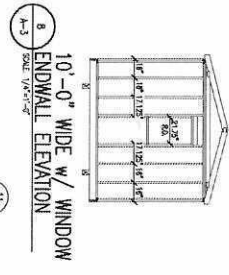
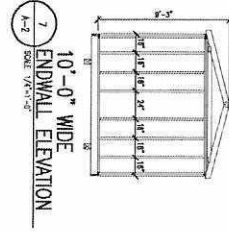
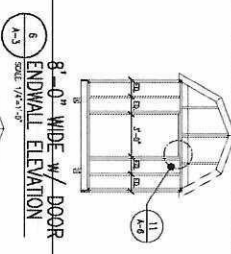
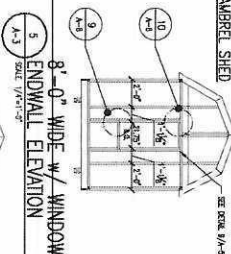
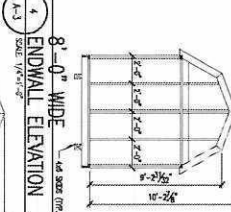
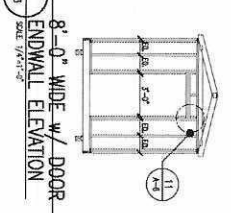
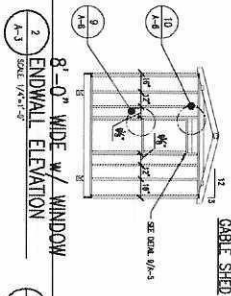
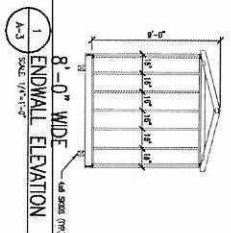
GAMBREL SHED



AREA FOR APPROVAL STAMPS

GABLE SHED

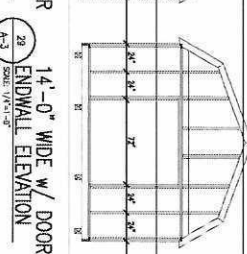
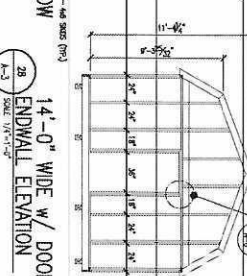
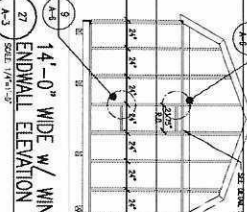
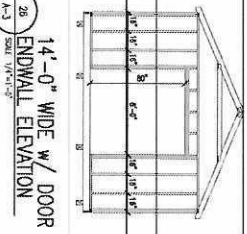
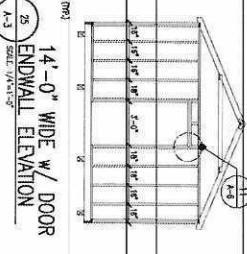
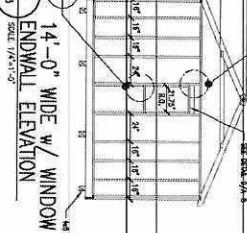
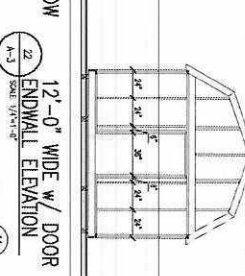
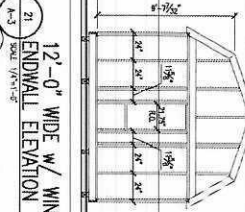
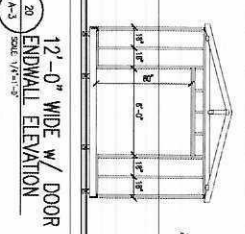
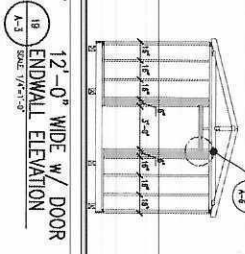
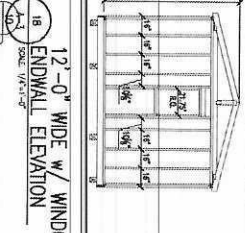
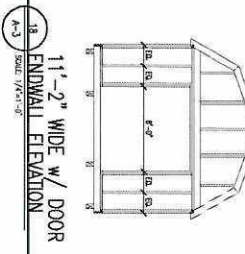
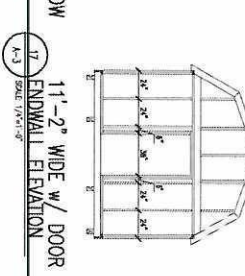
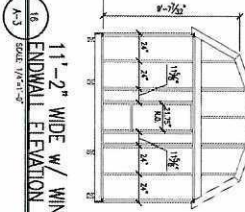
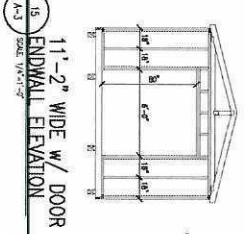
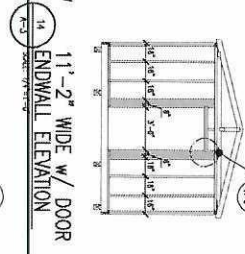
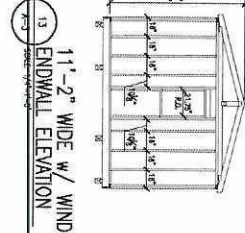
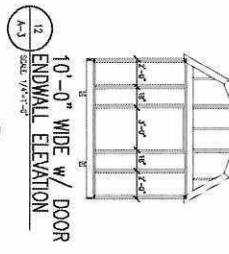
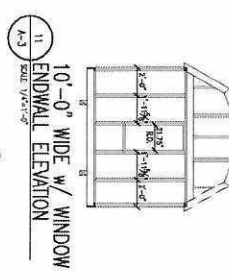
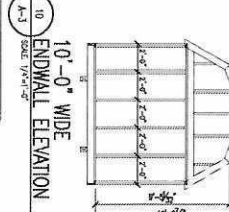
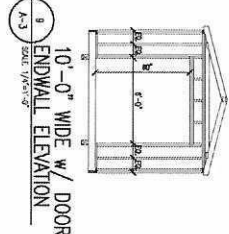
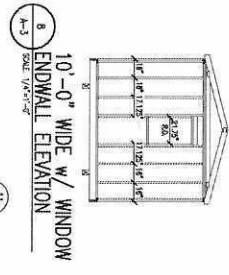
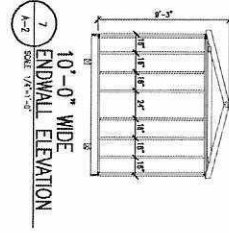
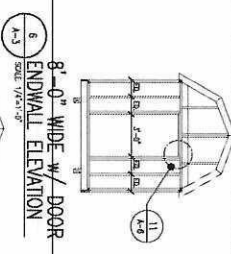
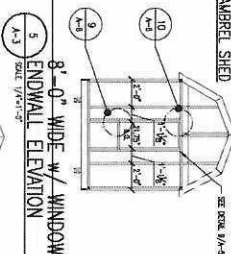
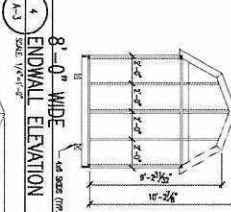
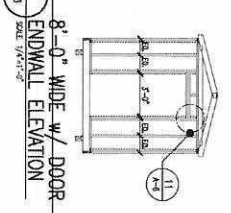
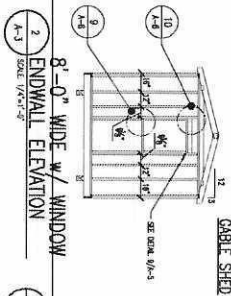
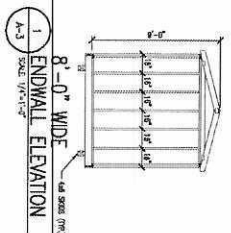
GAMBREL SHED



AREA FOR APPROVAL STAMPS

GABLE SHED

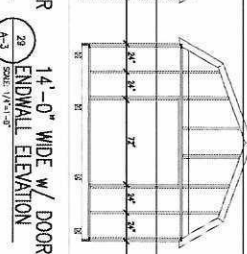
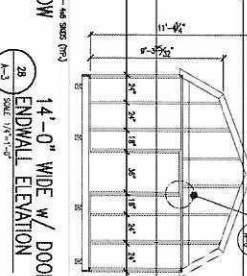
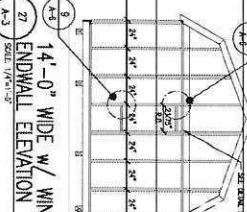
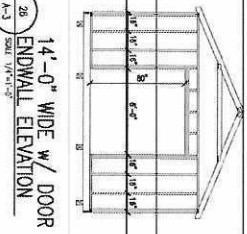
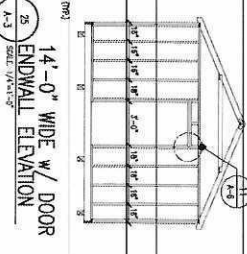
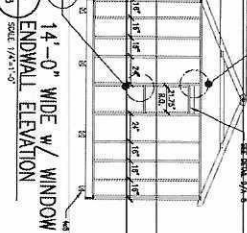
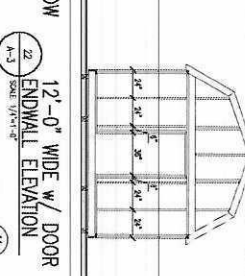
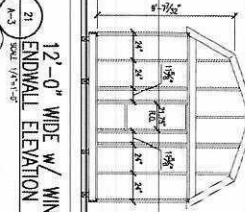
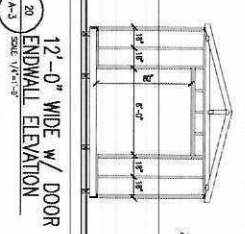
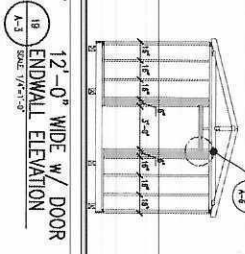
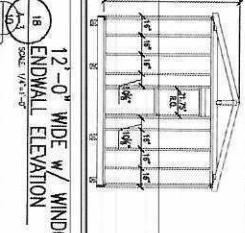
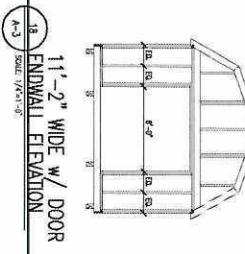
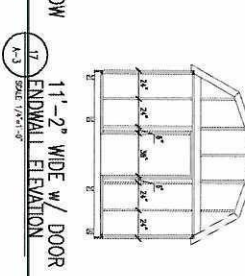
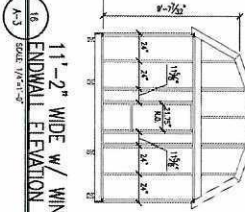
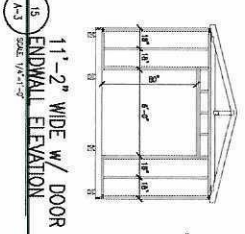
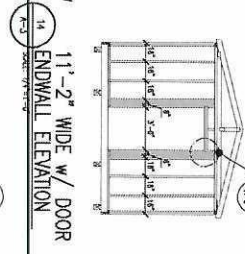
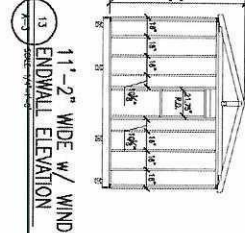
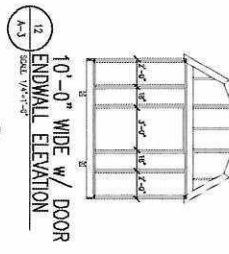
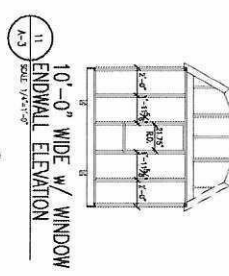
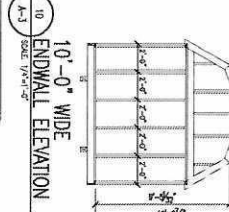
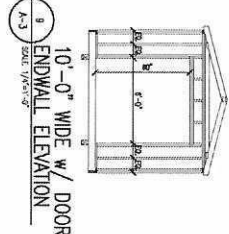
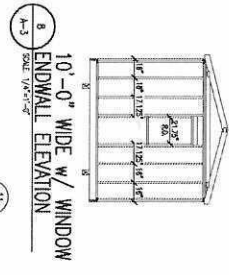
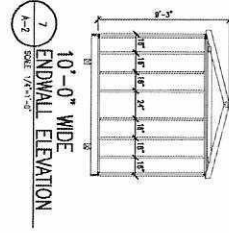
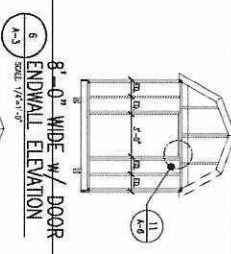
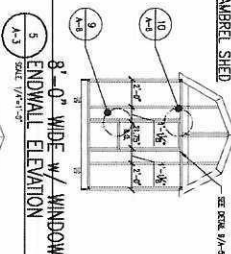
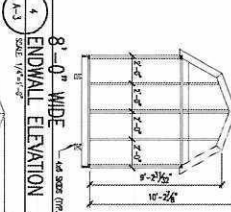
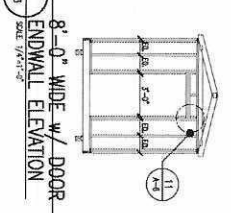
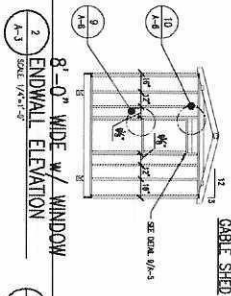
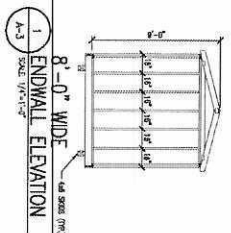
GAMBREL SHED



AREA FOR APPROVAL STAMPS

GABLE SHED

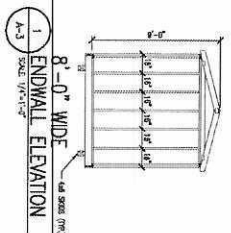
GAMBREL SHED



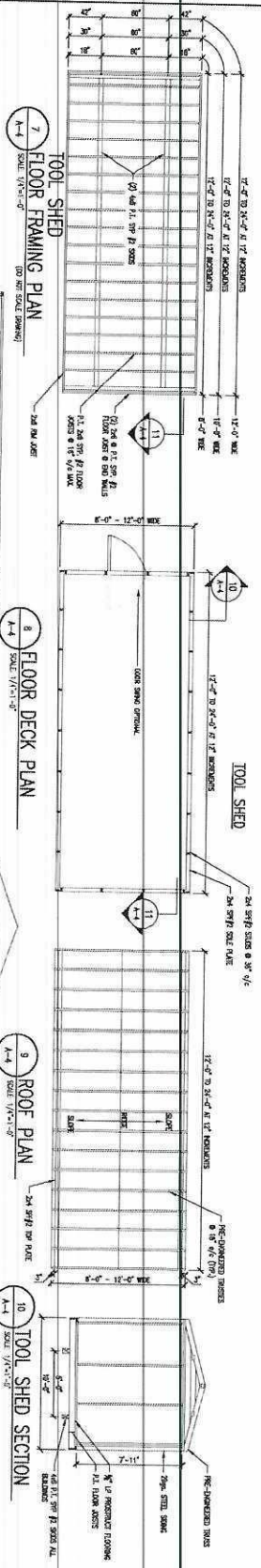
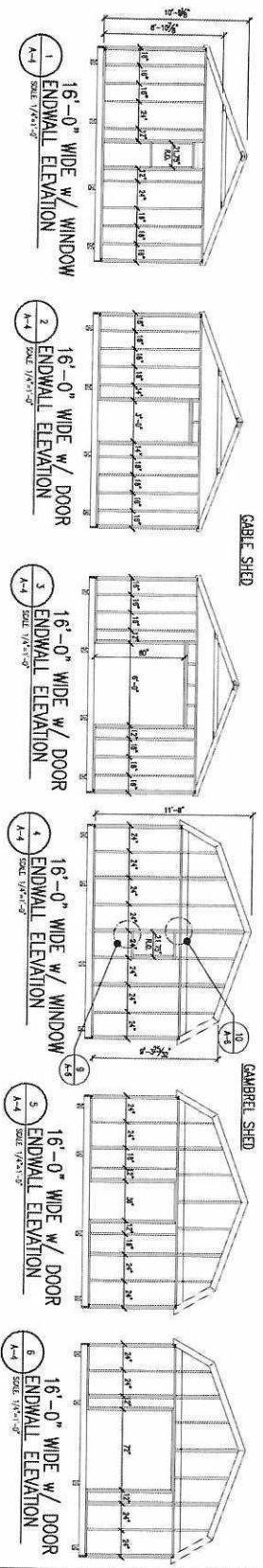
AREA FOR APPROVAL STAMPS

GABLE SHED

GAMBREL SHED



AREA FOR APPROVAL SIGNS



1. REMOVE THE ROOF FROM THE SHED
2. REMOVE THE SIDING FROM ALL REMAINING WALLS
3. REMOVE THE FLOOR FROM THE SHED

REVISION	DESCRIPTION	DATE	BY

DATE: 4/17/23
 PROJECT NO.: 18208
 DRAWING BY: JH
 CHK BY: DWS
 DWG NO.: A-4

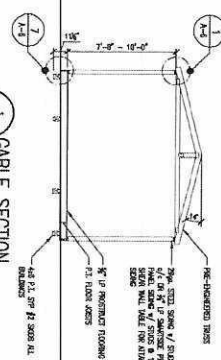
ENGINEERING SERVICES PROVIDED FOR
PREMIER-FORGEABLE BUILDINGS
 317 EAST STATE LINE ROAD
 SOUTH TULSA, TN 38257
 WWW.PREMIERBUILDINGS.US

ADS
 ALTERNATE DESIGN SOLUTIONS
 10000 W. TULSA DRIVE
 TULSA, OK 74116

SECTION CUTS
 GARAGEWALL & TOOL SHED
DON VAN GEMPE, P.E.
 SPECIALTY STRUCTURAL ENGINEER
 860-500-9480

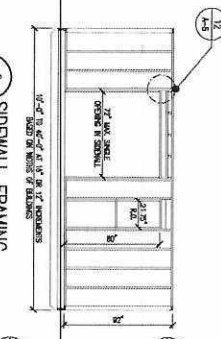


AREA FOR APPROVAL STAMPS



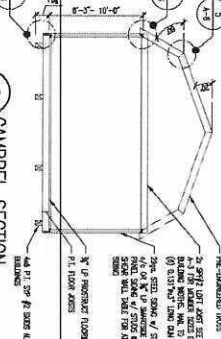
1 GABLE SECTION
SCALE: 1/4"=1'-0"

1. SEE NOTES ON SHEET 1-A & C-1 FOR MATERIALS
2. SEE NOTES ON SHEET 1-A & C-1 FOR MATERIALS
3. SEE NOTES ON SHEET 1-A & C-1 FOR MATERIALS



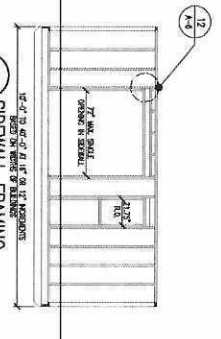
2 SIDEWALL FRAMING
SCALE: 1/4"=1'-0"

1. SEE NOTES ON SHEET 1-A & C-1 FOR MATERIALS
2. SEE NOTES ON SHEET 1-A & C-1 FOR MATERIALS
3. SEE NOTES ON SHEET 1-A & C-1 FOR MATERIALS



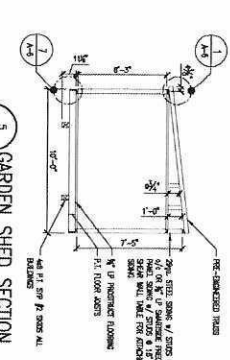
3 GAMBREL SECTION
SCALE: 1/4"=1'-0"

1. SEE NOTES ON SHEET 1-A & C-1 FOR MATERIALS
2. SEE NOTES ON SHEET 1-A & C-1 FOR MATERIALS
3. SEE NOTES ON SHEET 1-A & C-1 FOR MATERIALS



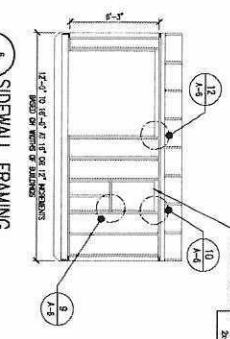
4 SIDEWALL FRAMING
SCALE: 1/4"=1'-0"

1. SEE NOTES ON SHEET 1-A & C-1 FOR MATERIALS
2. SEE NOTES ON SHEET 1-A & C-1 FOR MATERIALS
3. SEE NOTES ON SHEET 1-A & C-1 FOR MATERIALS



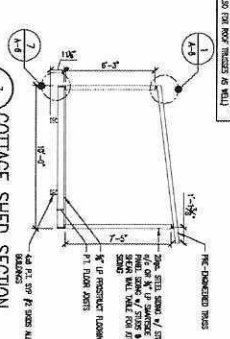
5 GARDEN SHED SECTION
SCALE: 1/4"=1'-0"

1. SEE NOTES ON SHEET 1-A & C-1 FOR MATERIALS
2. SEE NOTES ON SHEET 1-A & C-1 FOR MATERIALS
3. SEE NOTES ON SHEET 1-A & C-1 FOR MATERIALS



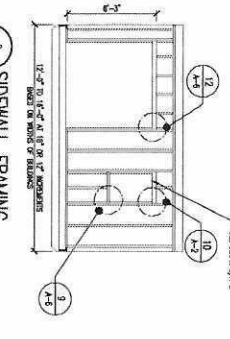
6 SIDEWALL FRAMING
SCALE: 1/4"=1'-0"

1. SEE NOTES ON SHEET 1-A & C-1 FOR MATERIALS
2. SEE NOTES ON SHEET 1-A & C-1 FOR MATERIALS
3. SEE NOTES ON SHEET 1-A & C-1 FOR MATERIALS



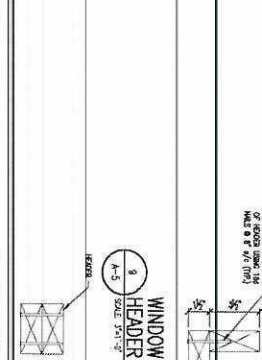
7 COTTAGE SHED SECTION
SCALE: 1/4"=1'-0"

1. SEE NOTES ON SHEET 1-A & C-1 FOR MATERIALS
2. SEE NOTES ON SHEET 1-A & C-1 FOR MATERIALS
3. SEE NOTES ON SHEET 1-A & C-1 FOR MATERIALS

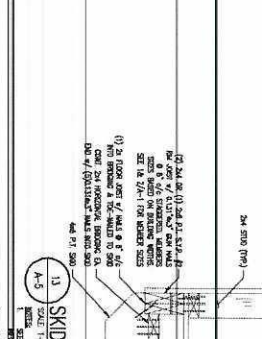


8 SIDEWALL FRAMING
SCALE: 1/4"=1'-0"

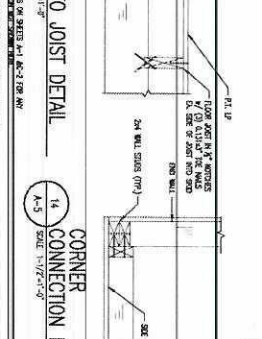
1. SEE NOTES ON SHEET 1-A & C-1 FOR MATERIALS
2. SEE NOTES ON SHEET 1-A & C-1 FOR MATERIALS
3. SEE NOTES ON SHEET 1-A & C-1 FOR MATERIALS



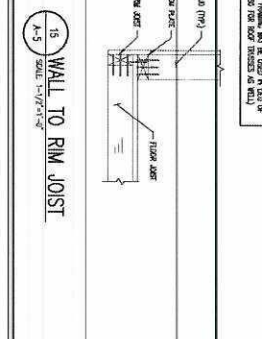
9 WINDOW HEADER DETAIL
SCALE: 3/4"=1'-0"



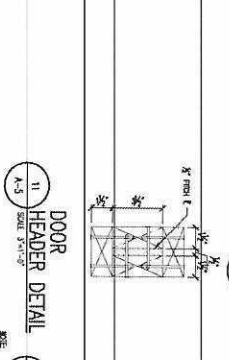
10 DOOR HEADER DETAIL
SCALE: 3/4"=1'-0"



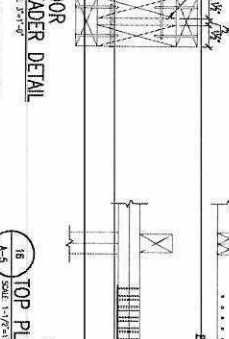
11 SKID TO JOIST DETAIL
SCALE: 1/2"=1'-0"



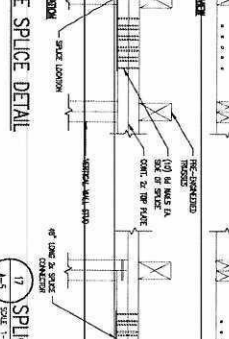
12 CORNER CONNECTION DETAIL
SCALE: 1/2"=1'-0"



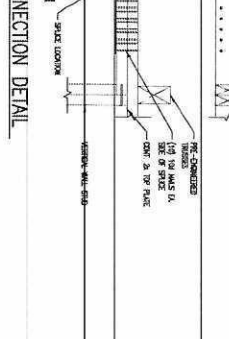
13 DOOR HEADER DETAIL
SCALE: 3/4"=1'-0"



14 DOOR HEADER DETAIL
SCALE: 3/4"=1'-0"



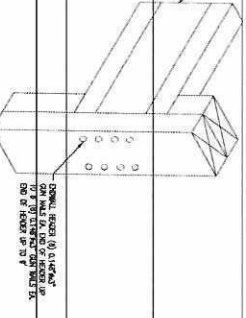
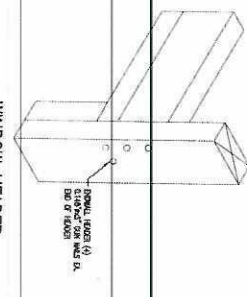
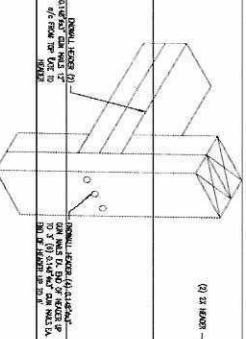
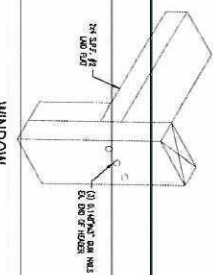
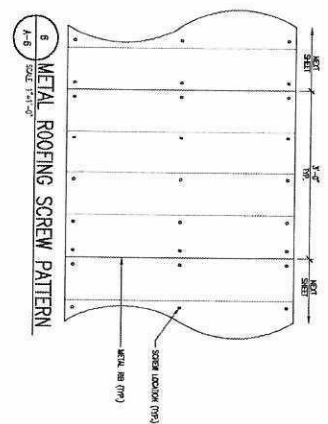
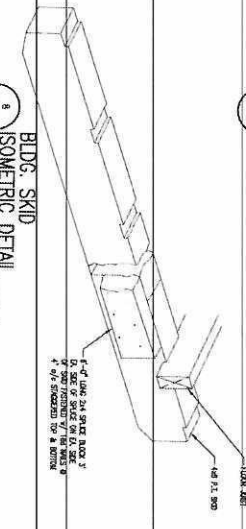
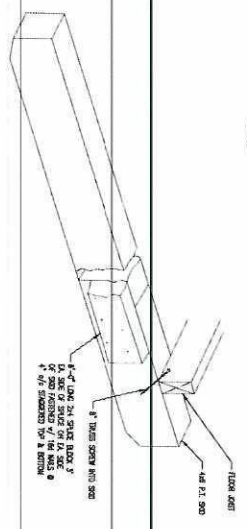
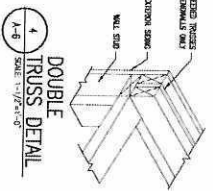
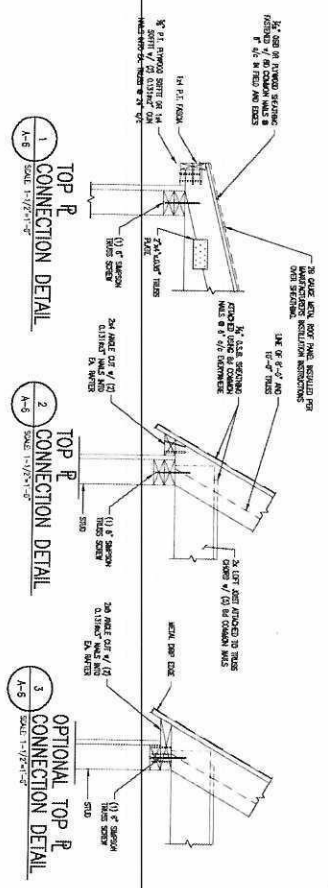
15 TOP PLATE SPLICE DETAIL
SCALE: 1/2"=1'-0"



16 SPLICE CONNECTION DETAIL
SCALE: 1/2"=1'-0"

<p>PROJECT: UTILITY SHED</p> <p>TYPICAL DETAILS</p>									
<p>ENGINEERING SERVICES PROVIDED FOR: PREMIER PORTABLE BUILDINGS 317 EAST STATE LINE ROAD SOUTH PLUM, TN 38257 WWW.PREMIERBUILDINGS.COM</p>									
<p>DATE: 4.17.23</p> <p>PROJECT NO.: 18008</p> <p>DRAWING BY: JH</p> <p>CHECK BY: DWS</p> <p>DWG. NO.: A-5</p>									
<p>REVISION</p> <table border="1"> <thead> <tr> <th>NO.</th> <th>DESCRIPTION</th> <th>DATE</th> <th>BY</th> </tr> </thead> <tbody> <tr> <td> </td> <td> </td> <td> </td> <td> </td> </tr> </tbody> </table>		NO.	DESCRIPTION	DATE	BY				
NO.	DESCRIPTION	DATE	BY						
<p>7 of 11</p>									

AREA FOR APPROVAL STAMPS



ENGINEERING SERVICES PROVIDED FOR
PREMIER FORBATH-BUILDINGS
 317 EAST STATE PARK ROAD
 SOUTH PLAZA, TN 38227
 WWW.PREMIERBUILDINGS.US

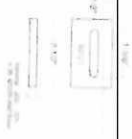
REVISION	DESCRIPTION	DATE	BY
1			
2			
3			
4			
5			

DATE: 4.17.23
 PROJECT NO.: 18096
 DRAWING BY: JH
 DATE: 01/23
 DWG. NO.: A-6



AREA FOR APPROVAL STAMPS

HP21
SINGLE SLOT
BUCKLE



HP21-(6 thru 15)
SINGLE BUCKLE
W/STRAP

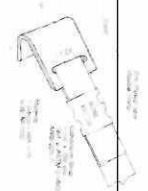
HP21-6 thru 15
SINGLE BUCKLE
W/STRAP



HP22
FRAME
CLAMP



HP22-(6 thru 15)
FRAME CLAMP
W/STRAP



HPAB
ANCHOR
BOLT & NUT



HPSS
STRAP SEAL



8

9

PROJECT: UTILITY SHED

PRODUCT OUR SHEETS

DON VAN GERME, P.E.
SPECIALTY STRUCTURAL ENGINEER
890-500-9480



ENGINEERING SERVICES PROVIDED FOR:
PREMIER PORTABLE BUILDINGS
317-BST-SHAR-LINE-ROAD
SOUTH FULTON, IN 46257
WWW.PREMIERBUILDINGS.US

REVISION	DESCRIPTION	DATE	BY
1			
2			
3			
4			
5			

DATE: 4/17/23
PROJECT NO.: 18009
DRAWING DATE: JH
DATE BY: DWB
DWG NO.: A-9

