
CLIENT



PROJECT

SWEENEY HOSPITAL

305 N. MCKINNEY STREET, SWEENEY, TEXAS 77480

CREATED: 8-1-2023 | PROJECT #: SL-1191 | WORK ORDER #: 2231806



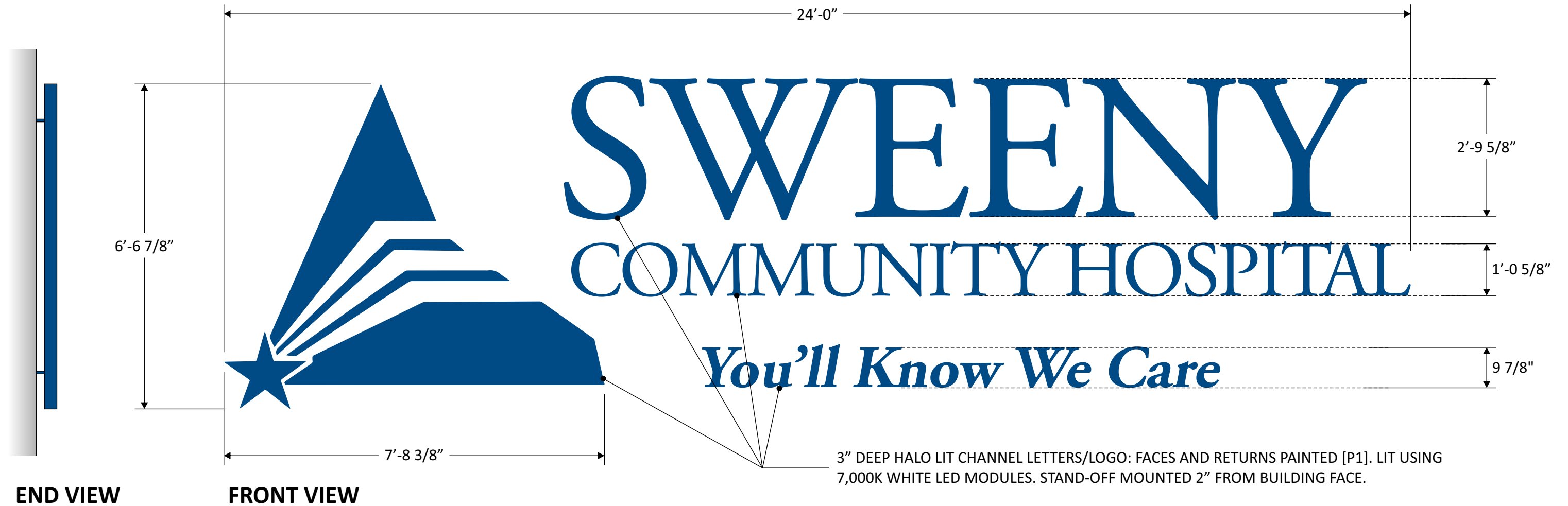
Hardman Signs

ARCHITECTURAL SIGNAGE & GRAPHICS

REP: SHANNON PATE | DESIGNER: STEVE SIMS

QTY. 1 SET OF CHANNEL LETTERS

SCALE: 1/2"=1'0"



PAINT COLORS:

P1: BLUE PMS 301C



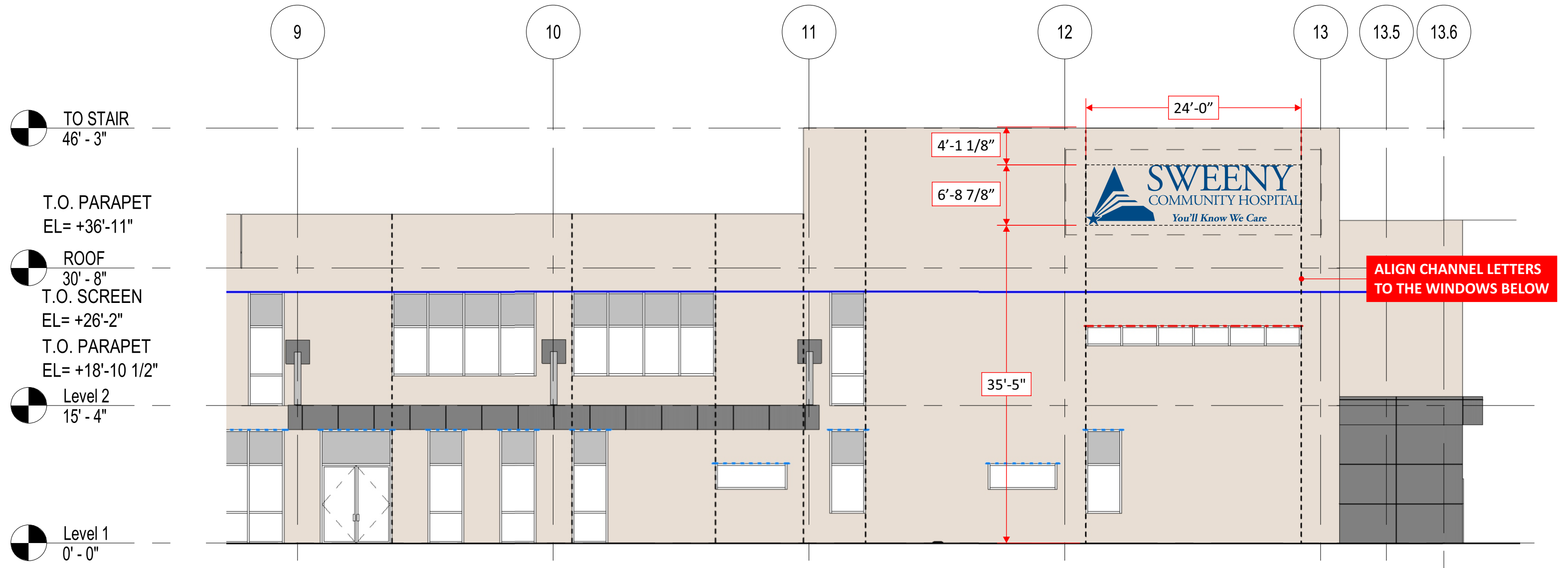
APPROVED APPROVED AS NOTED REVISE & RESUBMIT REJECTED

SIGNATURE: _____

PROJECT FILENAME: SWEENY HOSPITAL 2231806

SOUTHWEST ELEVATION

SCALE: 3/32"=1'0"



APPROVED APPROVED AS NOTED REVISE & RESUBMIT REJECTED

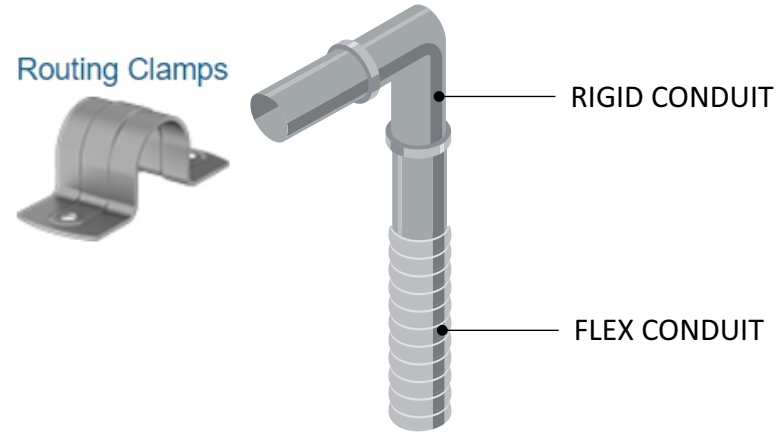
SIGNATURE: _____

PROJECT FILENAME: SWEENY HOSPITAL 2231806

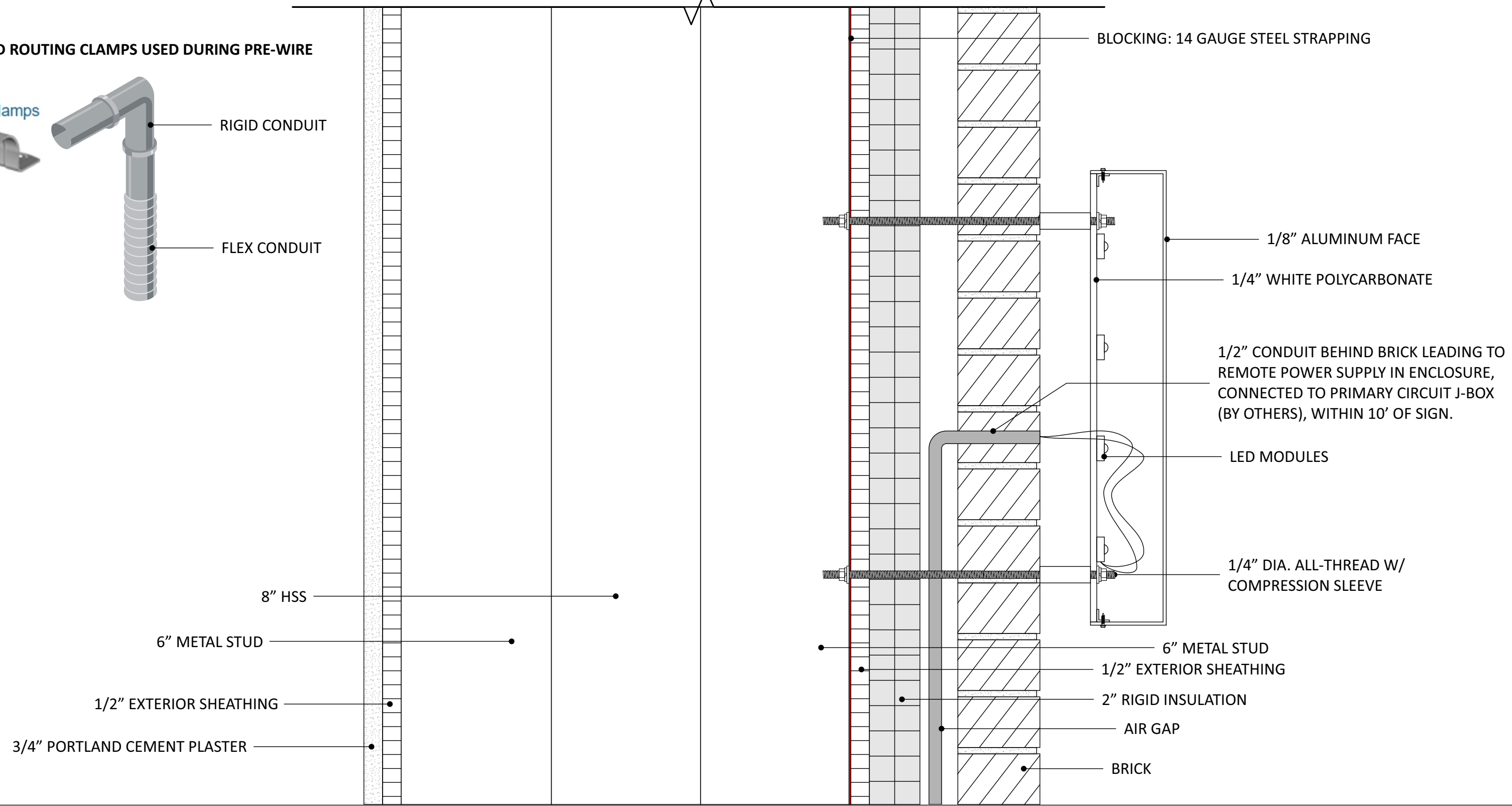
LARGE LETTER/LOGO DETAILS

SCALE: 3"=1'0"

CONDUIT AND ROUTING CLAMPS USED DURING PRE-WIRE



2'-10 1/2"



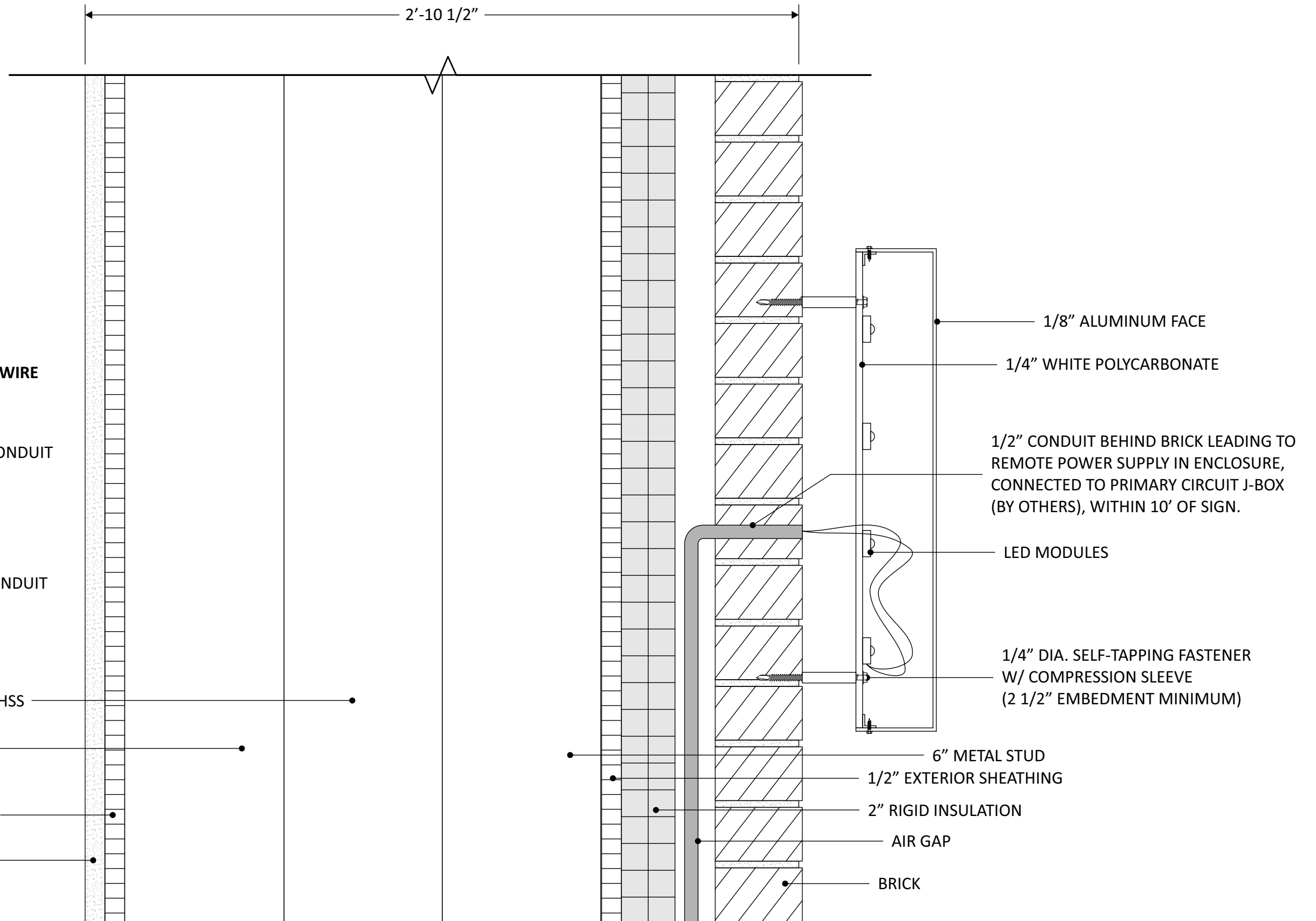
APPROVED APPROVED AS NOTED REVISE & RESUBMIT REJECTED

SIGNATURE: _____

PROJECT FILENAME: SWEENEY HOSPITAL 2231806

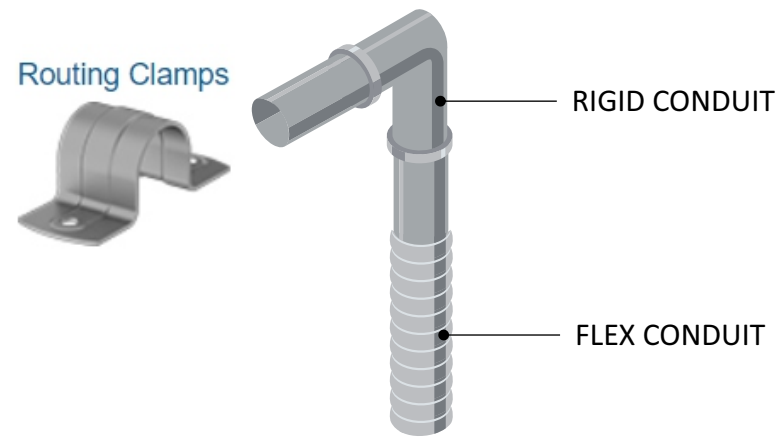
SMALL LETTER DETAILS

SCALE: 3"=1'0"



CONDUIT AND ROUTING CLAMPS USED DURING PRE-WIRE

Routing Clamps



- 8" HSS
- 6" METAL STUD
- 1/2" EXTERIOR SHEATHING
- 3/4" PORTLAND CEMENT PLASTER

- 1/8" ALUMINUM FACE
- 1/4" WHITE POLYCARBONATE
- 1/2" CONDUIT BEHIND BRICK LEADING TO REMOTE POWER SUPPLY IN ENCLOSURE, CONNECTED TO PRIMARY CIRCUIT J-BOX (BY OTHERS), WITHIN 10' OF SIGN.
- LED MODULES
- 1/4" DIA. SELF-TAPPING FASTENER W/ COMPRESSION SLEEVE (2 1/2" EMBEDMENT MINIMUM)

- 6" METAL STUD
- 1/2" EXTERIOR SHEATHING
- 2" RIGID INSULATION
- AIR GAP
- BRICK

APPROVED APPROVED AS NOTED REVISE & RESUBMIT REJECTED

SIGNATURE: _____

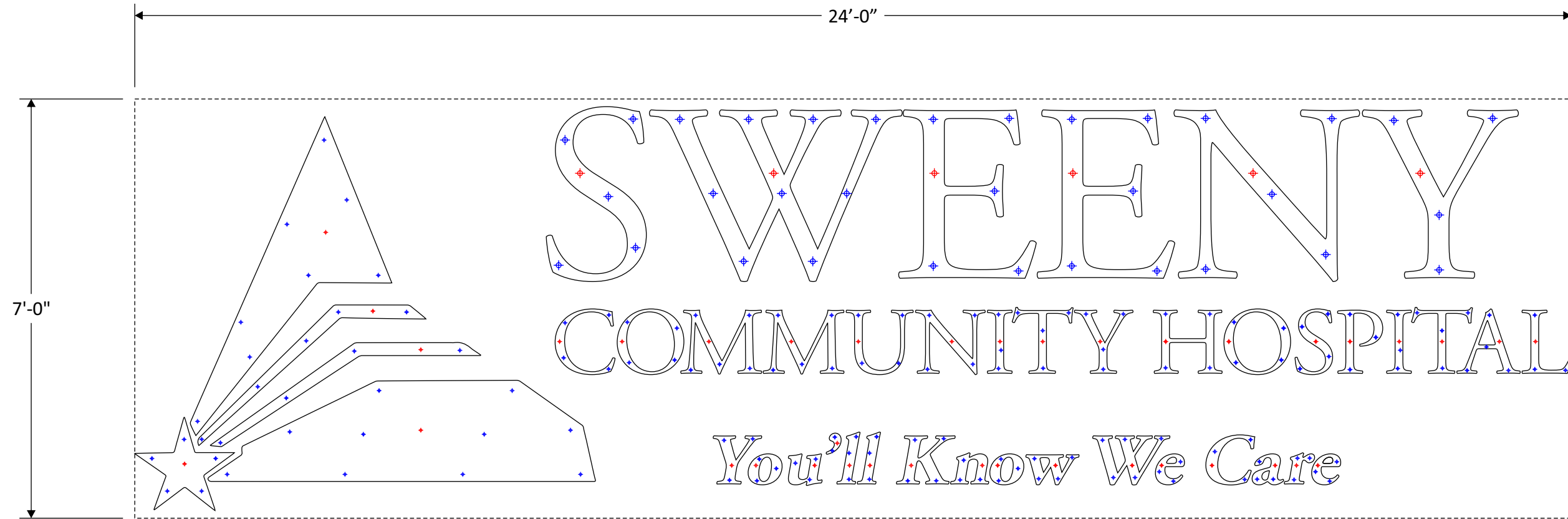
PROJECT FILENAME: SWEENEY HOSPITAL 2231806

TEMPLATE

SCALE: 1/2"=1'0"

⊕ ATTACHMENT POINTS

⊕ POWER



APPROVED APPROVED AS NOTED REVISE & RESUBMIT REJECTED

SIGNATURE: _____

PROJECT FILENAME: SWEENEY HOSPITAL 2231806

ELECTRICAL DETAILS



E496516

____ V ____ A ____ HZ

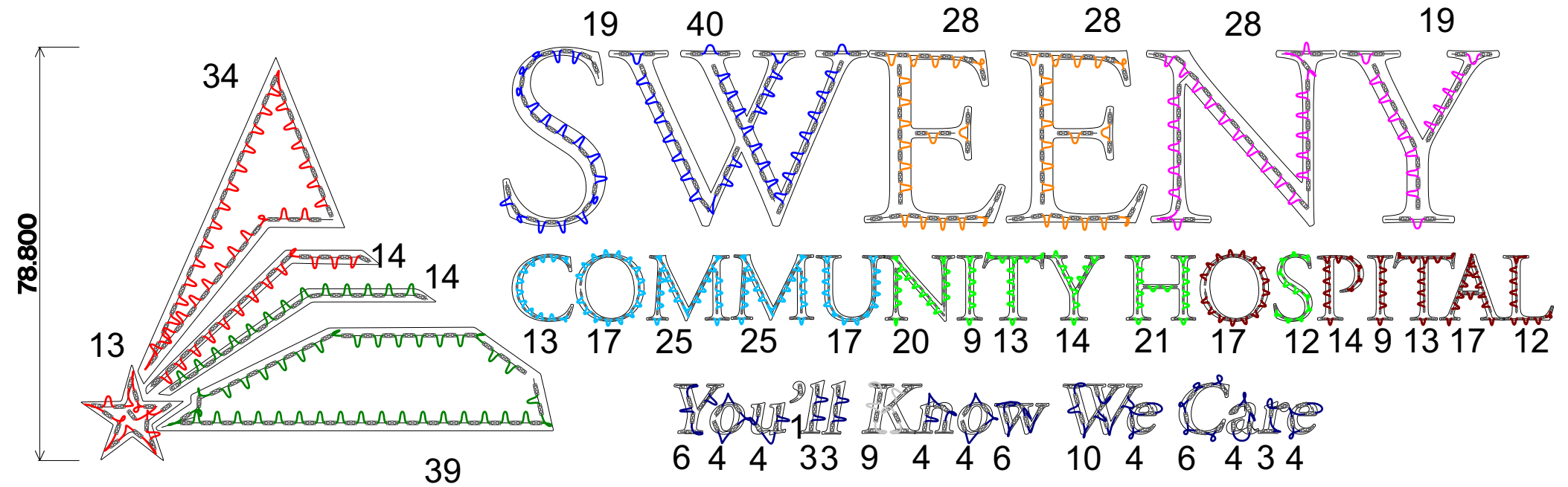
DATE: _____

Suitable for wet locations.

VOLT: 120V. LOAD: 9.90 A

HARDMAN SIGNS MUST BE NOTIFIED OF OTHER VOLTAGES PRIOR TO MANUFACTURE. A DEDICATED CIRCUIT CONSISTING OF PRIMARY, NEUTRAL AND GROUND CONDUCTORS ARE TO BE PROVIDED BY CUSTOMER.

MAX MODS PER SERIES	MAX MODS PER POWER SUPPLY	TITLE			REV.
Qwik Mod 2 Qwik Mod 2: 38 Qwik Mod Mini 2 Qwik Mod Mini 2: 120	Qwik Mod 2 76 MODS PER 60W PS Qwik Mod Mini 2 120 MODS PER 60W PS	Sweeney - 175875			1.
		DATE 25 Sep 2023	DRAWN BY : William Tallmon	AMP DRAW: 9.90 A	
		SIGN HEIGHT 78.8 in OA	SIGN DEPTH 3 in w/ 1.5 in SO	FACE MATERIAL: Aluminum	LIGHTING: Halo Lit



Load: 79.3 % Modules: 61.0 Watts: 47.6 of 60.0 PS: Energizer Series Universal 60W	Load: 68.9 % Modules: 53.0 Watts: 41.3 of 60.0 PS: Energizer Series Universal 60W	Load: 76.7 % Modules: 59.0 Watts: 46.0 of 60.0 PS: Energizer Series Universal 60W	Load: 72.8 % Modules: 56.0 Watts: 43.7 of 60.0 PS: Energizer Series Universal 60W	Load: 61.1 % Modules: 47.0 Watts: 36.7 of 60.0 PS: Energizer Series Universal 60W	Load: 77.6 % Modules: 97.0 Watts: 46.6 of 60.0 PS: Energizer Series Universal 60W	Load: 71.2 % Modules: 89.0 Watts: 42.7 of 60.0 PS: Energizer Series Universal 60W	Load: 65.6 % Modules: 82.0 Watts: 39.4 of 60.0 PS: Energizer Series Universal 60W	Load: 85.8 % Modules: 66.0 Watts: 51.5 of 60.0 PS: Energizer Series Universal 60W
--------------------------------------------------------------------------------------------	--------------------------------------------------------------------------------------------	--------------------------------------------------------------------------------------------	--------------------------------------------------------------------------------------------	--------------------------------------------------------------------------------------------	--------------------------------------------------------------------------------------------	--------------------------------------------------------------------------------------------	--------------------------------------------------------------------------------------------	--------------------------------------------------------------------------------------------

ESTIMATED PRODUCT PER SIGN

(351) Qwik Mod 2 Modules:
(UL#: PL-QM2-TW150-P, SKU#: M-QMDX0-71)
(268) Qwik Mod Mini 2 Modules:
(UL#: PL-MN2-QM70-P, SKU#: M-QMM20-70)

(9) Energizer Series Universal 60W Driver(s):
(UL#: P-OH060-12-EC, SKU#: P-OH060-12-EC)

CAUTION: THIS LAYOUT IS ONLY AN ESTIMATE.

Channel letter depth, face color, material, and thickness can vary which may effect the number of modules required. To ensure accuracy, it is recommended that you test light in a darkened environment prior to installing or shipping to the site to ensure the light output is commercially acceptable. Final material estimates are the responsibility of the sign manufacturer. Unless noted in header, Layout is based on the use of acrylic face material.

APPROVED APPROVED AS NOTED REVISE & RESUBMIT REJECTED

SIGNATURE: _____

PROJECT FILENAME: SWEENEY HOSPITAL 2231806