

# LANDMARK<sup>®</sup> SERIES

Designer Roofing Shingles



CertainTeed  
A INTELCO CORP.

Landmark, shown in Weathered Wood



*NOTE: Due to limitations of printing reproduction, CertainTeed can not guarantee the identical match of the actual product color to the graphic representations throughout this publication.*



# Trust Your Home to Landmark®

Few things in this world are as precious as the place that you call home. It is much more than just a house. It's the foundation from which you build your life. That's why having a roof that gives your home long-lasting curb appeal and protection from the elements is so important. At CertainTeed, our benchmark for success is our customers' total peace of mind. And we wouldn't have it any other way.

Our dedication to making the highest-quality roofing systems continues to earn the respect of top building professionals. And our product portfolio offers the widest variety of design and color options in the industry. It's no wonder that more than a million homeowners across North America choose CertainTeed each year.

And the job doesn't stop once the roof goes on. Every CertainTeed product is backed by our industry-leading manufacturer's warranty, allowing you to rest confidently and comfortably for years to come.

 High-Quality, Reliable Choice +  Industry-Best Warranty +  Century of Trusted Performance = PEACE OF MIND

*Landmark, shown in Atlantic Blue*

Technology that protects  
the beauty of your roof and  
strengthens its performance.





# NAILTrak<sup>®</sup> Shingle Technology

## The bond that holds it together.

For more than a decade, NailTrak has improved shingle installation by providing a nailing area three times wider than that of a typical laminate shingle. This increases efficiency and accuracy in installation, providing homeowners greater peace of mind. Landmark<sup>®</sup> shingles also feature our specially-formulated Quadra-Bond<sup>®</sup> adhesive, providing industry-leading resistance to delamination. Together, our NailTrak and Quadra-Bond technologies deliver the strength and durability that allow your roof to stand the test of time.

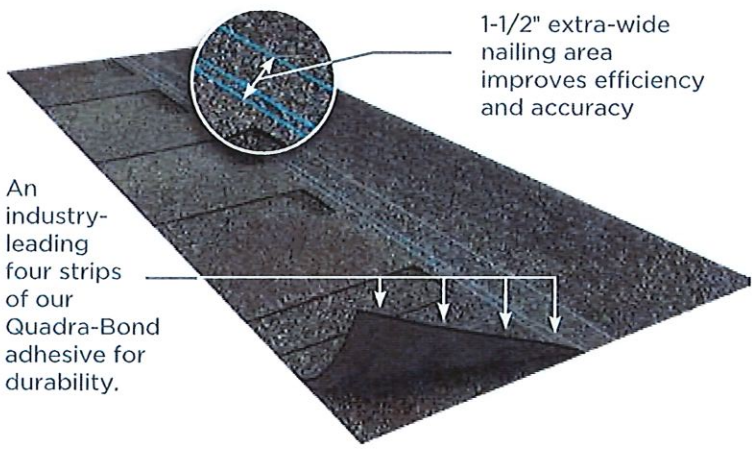


Diagram for illustrative purposes only.

# STREAKFighter<sup>®</sup> Algae-Resistant Shingle Technology

## The ultimate in stain protection.

Those streaks you see on other roofs in your neighborhood? That's algae, and it's a common eyesore on roofing throughout North America. CertainTeed's StreakFighter technology uses the power of science to repel algae before it can take hold and spread. StreakFighter's granular blend includes naturally algae-resistant copper, helping your roof maintain its curb appeal and look beautiful for years to come.

### Granule with StreakFighter Technology

- Ceramic coating
- Copper layer
- Mineral core

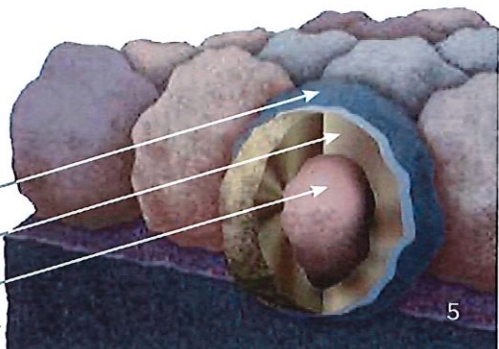


Diagram for illustrative purposes only.





# The Trusted Classic

## LANDMARK®

Owning a Landmark roof brings peace of mind. Landmark's dual-layered construction and exceptional durability provide long-lasting protection for your home.

- Dual-layered for extra dimensionality and protection from the elements
- Offers the widest array of colors in the industry
- Independently certified as meeting the highest quality standards for roofing



*Silver Birch*

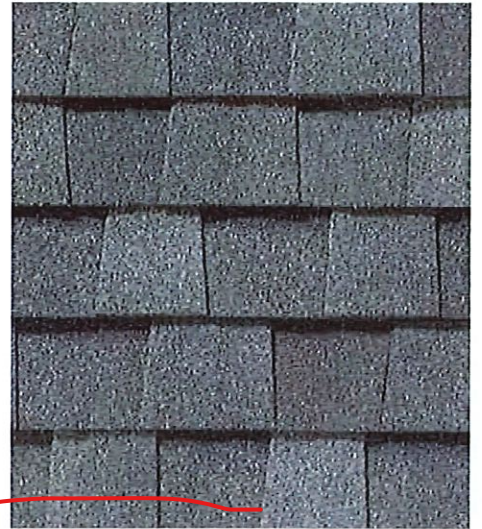
# LANDMARK® COLOR PALETTE



Silver Birch



Cobblestone Gray



Georgetown Gray



Pewter



Moire Black



Charcoal Black



Resawn Shake



Mojave Tan



Cottage Red





Colonial Slate



Weathered Wood



Driftwood



Burnt Sienna



Heather Blend



Sunrise Cedar



Hunter Green



Atlantic Blue



2023 New Products & Trends

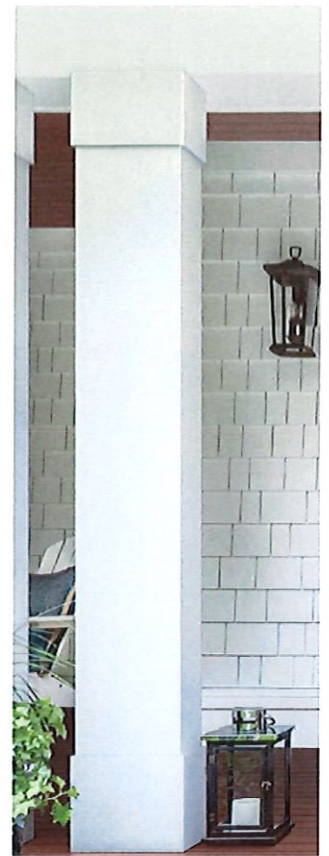
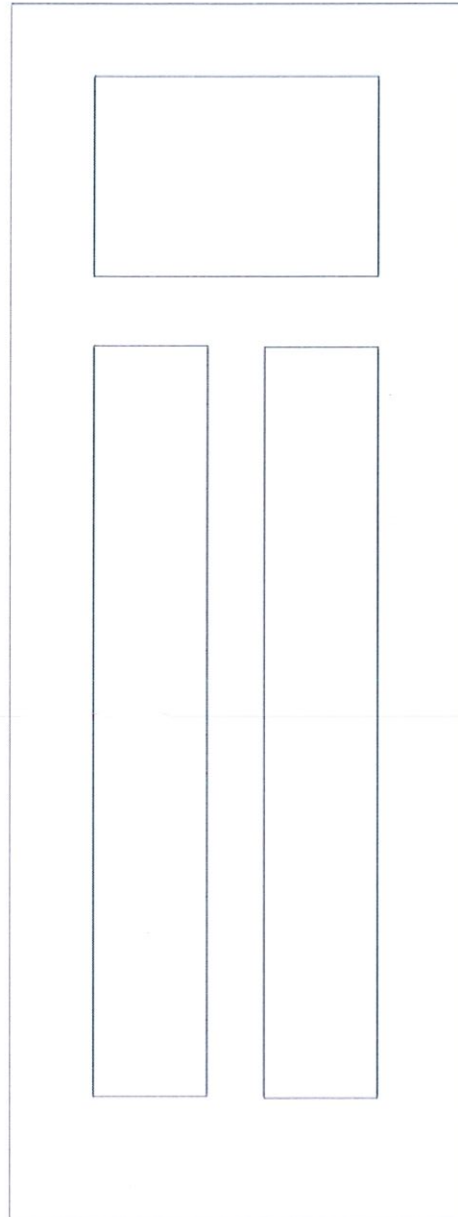
# Craftsman Shaker-Style Entry Doors



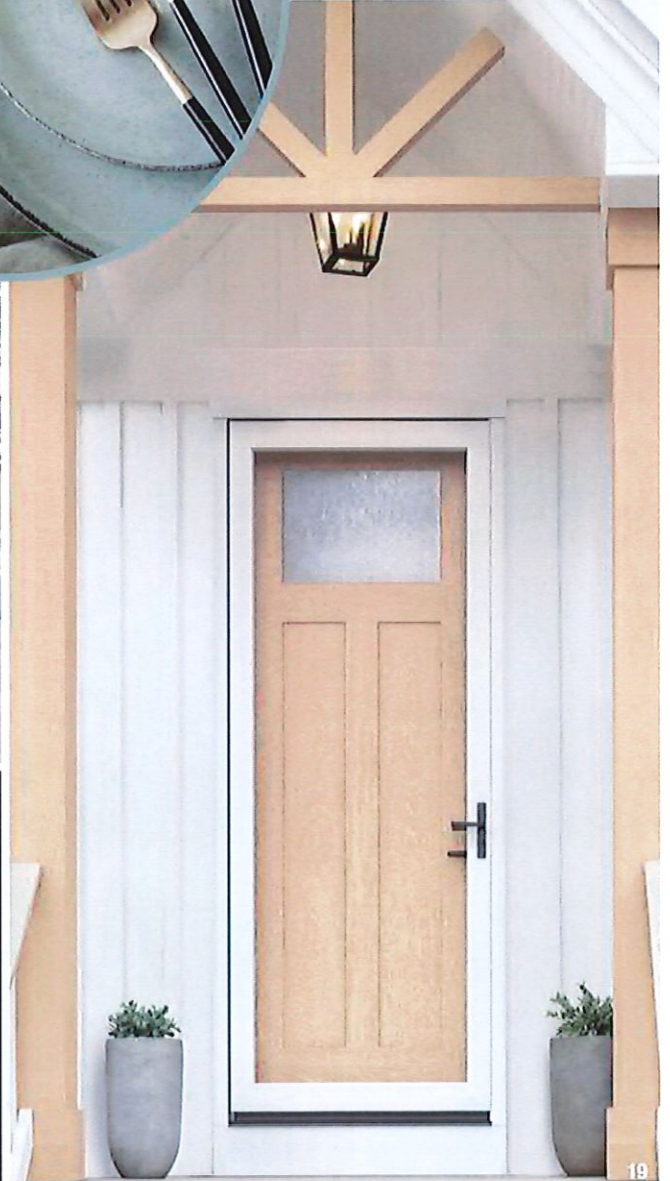
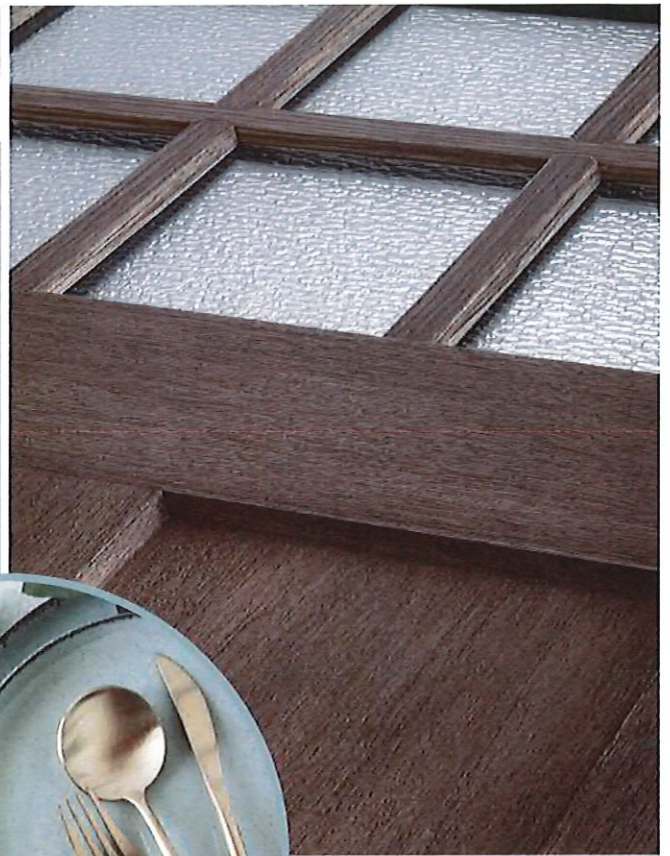
Options for  
every home.

Bring the on-trend Craftsman Shaker-style look to more entries with new size options. This transitional update to the historic Shaker style features squared recessed panels that deliver a clean, casual aesthetic

Doors and sidelites now available in 6'8", 7'0" and 8'0" heights for Fiber-Classic and Smooth-Star.



2155



A warm welcome  
for casual homes.

# STYLEVIEW®

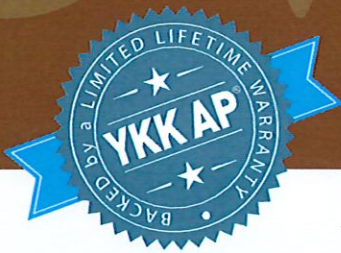
Windows and Doors for New Construction



**YKK**  
**ap** | Quality  
inspires®

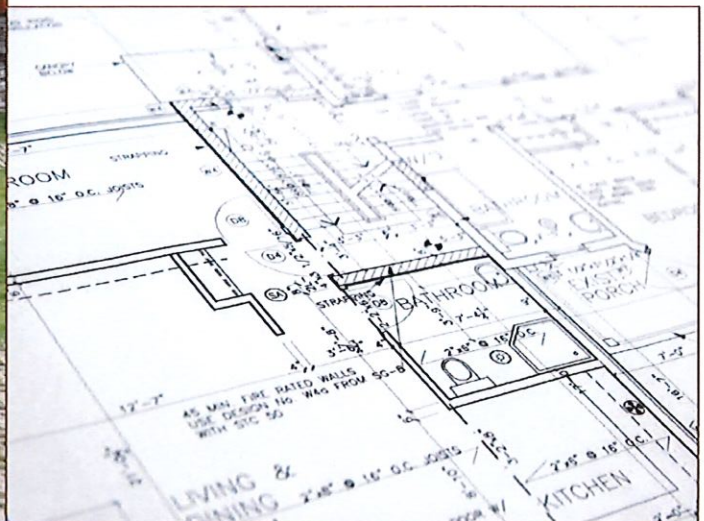
# STYLEVIEW®

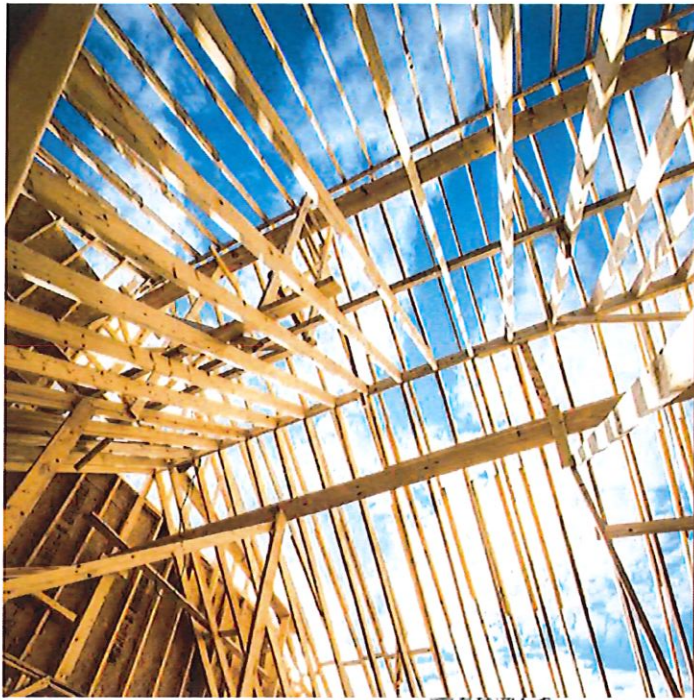
Windows and Doors for New Construction



YKK AP StyleView® brand vinyl windows and sliding doors for new construction are designed for years of trouble-free use. By incorporating high performance glazing and corrosion-resistant hardware with an architecturally correct design, YKK AP offers windows and doors that deliver more value and homeowner comfort.

The YKK AP philosophy of continual investment in research and development, in testing, and in production facilities has kept us in the forefront of the industries we serve. YKK AP is a worldwide leader in architectural products, committed to producing the highest quality residential product available.





# CONTENTS

Single-Hung Windows	3 – 4
Double-Hung Windows	5 – 6
Picture & Transom Windows	7 – 8
Casement & Awning Windows	9 – 12
Slider Windows	13 – 14
Geometric Windows	15 – 16
Sliding Doors	17
Options & Accessories	18

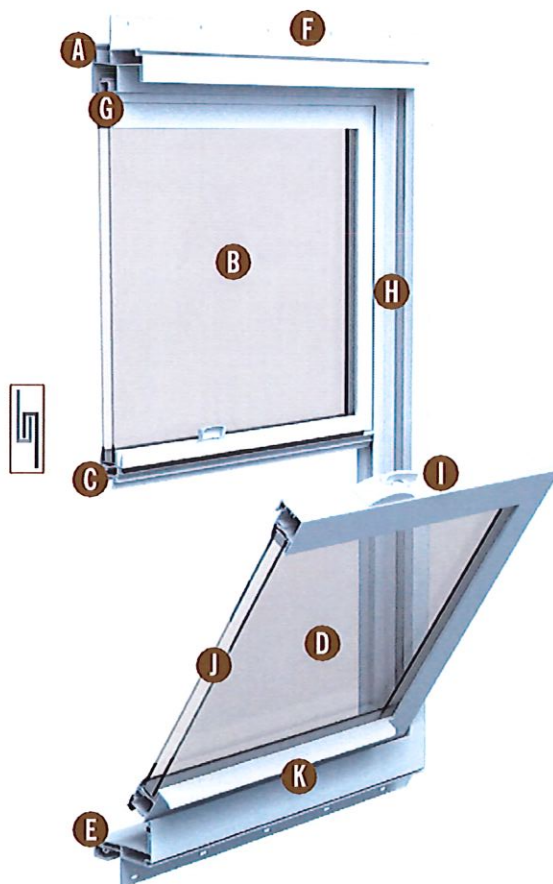


# SINGLE-HUNG WINDOWS

Removable Upper Sash.

StyleView® single-hung windows are engineered to meet the demand for quality and craftsmanship while providing easy installation and enduring value. The removable upper sash gives StyleView single-hung windows a look comparable to traditional double-hungs. The windows provide a simple, safe opening for drywall pass-through and repair. Twin and triple continuous head and sill units can be provided, eliminating the need for mulling separate units together.

- A** **Integral 180 Brick Mould and J-Channel:**  
Produces a rich detailed appearance while reducing labor and material costs associated with J-channel applications
- B** **Removable Upper Sash:**  
Renders a real double-hung look while providing for simple economical repair and drywall pass-through
- C** **Interlocking Sash:**  
Improves structural performance and adds security
- D** **Tilt-In Bottom Sash:**  
Makes cleaning easier
- E** **Fusion-Welded Sloped Sill & Projected Sill Nose:**  
For an architecturally correct look and improved water rating



- F** **Integral 1" Nail Fin:**  
Provides easy user-friendly installation
- G** **Double Weather Stripping:**  
Optimum protection against air, water, noise, and dust infiltration
- H** **Constant-Force Teflon®-Coated Stainless Steel Balance:**  
Corrosion-resistant and never needs adjustment
- I** **Proprietary Cam Lock:**  
Provides tight weather seal and distinctive styling with concealed fasteners
- J** **3/4" Insulated Glass:**  
Low-E and low-conductance spacers are standard for optimal thermal efficiency
- K** **Integral Lift Rail:**  
Enables easy sash operation



112322-0452-DRIFTWOOD LR

NATIONWIDE  
*Home*  
**DRIFTWOOD**  
Double 5" Straight Lap



Explore what's possible, from the outside.

# Lifelong curb appeal. This is where it begins.

From the haziest of notions to a perfectly put together exterior expression: there's a simple way to get there. Our varied, deep collections of beautiful, low-maintenance siding present themselves in styles, textures and colors that elevate a wide selection of exteriors, and fit all kinds of tastes and budgets.

Use this brochure as the first step toward getting the exterior that's in your head onto your home. It starts with discovering the siding that suits you—in which every angle, section and decision falls perfectly into place.

On Cover:  
Exterior Portfolio® Board & Batten In Espresso,  
Exterior Portfolio® Vinyl Trim In Pearl



CraneBoard® Board & Batten In Driftwood,  
CraneBoard® D7 In Clay,  
Architectural Essentials™ Trim In Bone



## Our siding is engineered to be all things to all homeowners.

### CURB APPEAL

Aesthetics take form in a diverse selection of profiles, colors, textures and accessories that match a full range of architectural styles. Our innovative Chromatix® technology color protection—featured in our siding with darker shades—helps color retain its vibrant curb appeal day after day.

### DURABILITY

Strong, fade resistant and resilient, our siding is built to remain beautiful for the life of your home. Plus, many of our siding lines are surprisingly green, rivaling cedar in overall sustainability.

### LOW MAINTENANCE

Our siding is engineered for endless admiration, and has little need for the persistent upkeep characteristic of wood.

### VALUE

This is what it means to distinguish your home for life without compromising your aesthetics or stretching your budget.

### PEACE OF MIND

Every one of our siding products carries a great warranty, and helps provide strong resale value.

### Smart Styles™ Expressions

Espresso	Regatta	Lighthouse Red	Graphite	Spruce	Slate
Carbon	Stone Harbor	Indigo	Peppercorn		

### Smart Styles™ Premium

Polaris	Canyon	Oceanside	Nantucket	Smoky Ash	Metropolitan Gray
---------	--------	-----------	-----------	-----------	-------------------

### Smart Styles™

Country Belge	Wheat	Aspen White	Cypress	Pearl	Mocha
Saddle	Clay	Bone	Greystone	Rye	Driftwood

### Shake Woodland

Black Walnut	Sedona Shadow	Mountain Ash	Rustic Gray
--------------	---------------	--------------	-------------

### Shake Weathered

Gray Moss	Cottonwood	Aged Pewter	Stonehedge
-----------	------------	-------------	------------

# WITHSTAND THE ELEMENTS BEAUTIFULLY

Market Square® Siding withstands the elements beautifully, boasting hurricane-force resistance, Chromatix™ technology applied to SmartStyles™ Premium and SmartStyles™ Expressions shades, and nail hems and lock & clip systems. In other words, the opposite of fly-by-night installation.

- **Robust .044" thick panel**
- **Partial rollover nailing hem**
- **Teardrop lock and clip system**
- **Designed to withstand hurricane-force winds up to 180 mph**
- **Chromatix featured in SmartStyles™ Premium and SmartStyles™ Expressions shades**

## UNIFIED DESIGN: IT STARTS WITH COLOR

Exterior design revolves around how we choose and combine color. What's trending is as important as what speaks to you, and we help make sense of every aspect of it. Use our color combination tool to guide and to help. Gain valuable (and fun) perspective at [royalbuildingproducts.com/color-style/exterior-portfolio-color-combinations](http://royalbuildingproducts.com/color-style/exterior-portfolio-color-combinations)

Our color collections are created to fully express themselves from day one and all the days and years after that. Whether subtly or vibrantly, Market Square siding pigments project personality while resisting fading and the elements.

- **Our proprietary Chromatix® technology color protection effortlessly maintains the look you create in a challenging outdoor environment**
- **Infrared-reflecting pigments reduce heat buildup**
- **UV formulation with mineral-based pigments keep siding colors from fading**



Play with more  
than color.

*DreamDesigner*

To mix and match everything from siding to trim treatments on a variety of home styles (including your own), use our online design tool at [EPDreamDesigner.com](http://EPDreamDesigner.com).

LIVE A BODE

For design inspiration and year-round trending ideas and tips, explore our online design magazine at [LiveAbode.com](http://LiveAbode.com).