

There are 4 parks in Jacksonville. None of the parks have a dog park. They do permit dogs in all the parks, strictly enforcing the leash law in each park.

Emerald Isle has a park but does not have a dog park. Dogs are permitted in the park if they are on leash.

Surf City has a dog park. They have separate areas for the dogs; one for large dogs and one for small dogs.

Wilmington has a dog park with separated areas; one for small dogs and one for large dogs.

Greenville has no dog park.

New Bern has two dog parks. One park is just a fenced open space. The other park has a separated area; one for small dogs and one for large dogs.

Kinston has no dog park.

Raleigh has a total of seven dog parks. Three parks are just fenced open space. Four of the parks have a separated area; one for small dogs and one for large dogs.

A Dog Park is a great place for dogs to play and socialize. The Association of Professional Dog Trainers rate Dog Parks based upon whether it is a place where dogs can enjoy themselves without potential for problems.

The APDT claims that a **decent** Dog Park should have clean up materials, the availability of shade, and adequate space to avoid crowding.

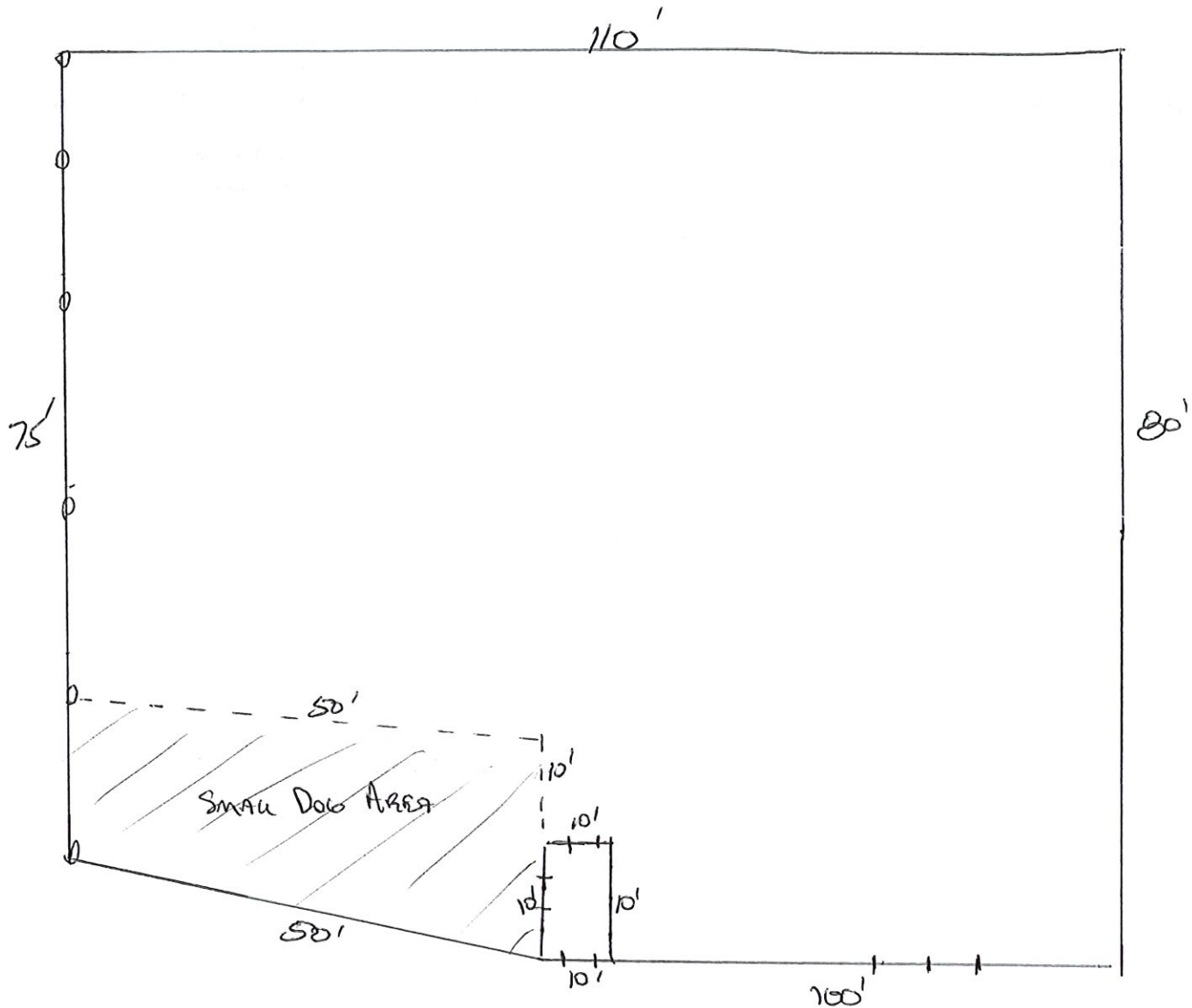
The APDT claims that a **good** Dog Park will have the features of a decent park plus separate entrance and exit gates or at least, a transitioning area and natural visual barriers so a “bullied” dog can remove himself to a location where the bullying dogs cannot see or get to him and quickly forget and move on to another activity.

The APDT claims that an **exceptional** Dog Park will have all of the decent features, most of the good features plus some of these exceptional items: several entrance and exit gates, a separate area for small dogs (those under 20 lbs), and fun stuff (agility equipment).

The Swansboro Parks & Recreation Master Plan includes the development of the Dog Park with the goal of reaching the APDT’s exceptional category.

A two step vision includes creating a small dog area within the existing Park. The second part includes tree removal and landscaping with the addition of agility equipment.

SWANSPORO MUNICIPAL PARK DOG PARK



ADD A GATE FROM TRANSITION AREA INTO NEW, SMALL DOG AREA

INSTALL APPROX 60' OF NEW, BLACK CHAIN LINK FENCING TO MATCH EXISTING FENCING

FENCE HEIGHT 4'

REMOVE ANY TREE ROOTS TO ACCOMPLISH WORK



Anchor Fencing 22 LLC sent you an estimate

Thank you for allowing us to provide you all with this estimate.

Scope of Work:

Show full details ▼

Municipal Dog Park

Supplies	\$1,179.81
Labor	\$661.48
2.9% Square Fee	\$54.99
Subtotal	\$1,896.28
Total	\$1,896.28