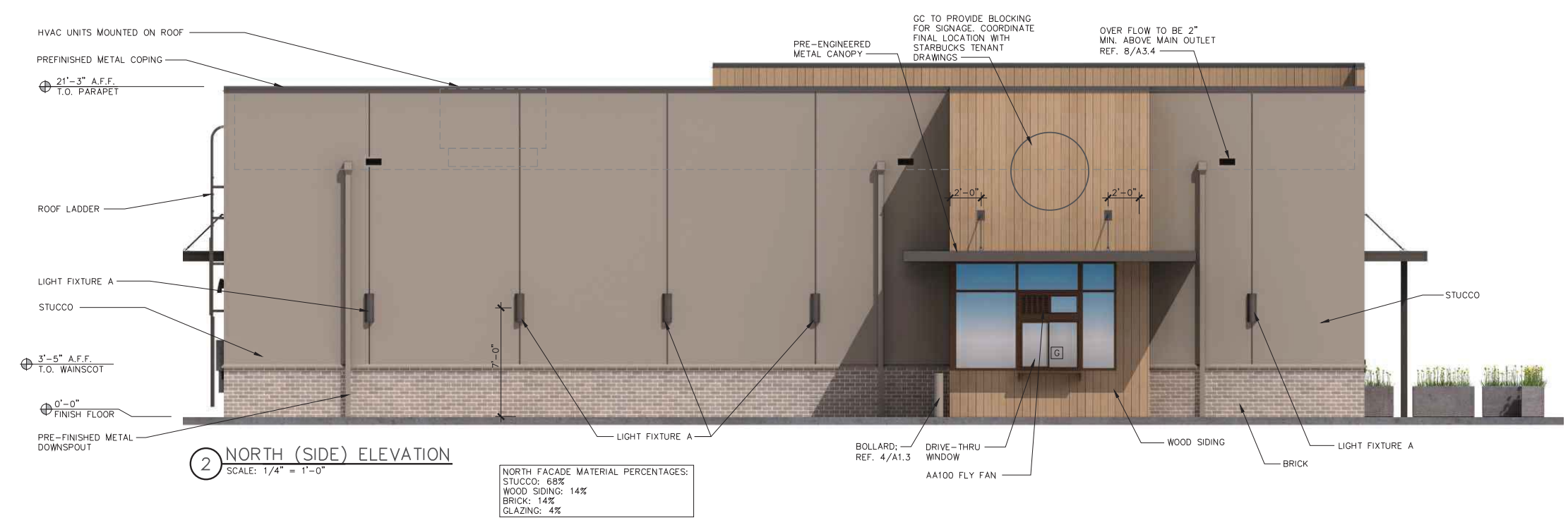


EXTERIOR FINISH SCHEDULE			
ITEM	COLOR	MANUFACTURER	REMARKS
STUCCO	"KEYSTONE GRAY" SW 7504	SHERWIN WILLIAMS	SANDPEBBLE FINE FINISH
WOOD SIDING	NICHIHA - VINTAGEWOOD CEDAR WOOD CLADDING	NICHIHA FIBER CEMENT	INSTALL VERTICALLY PER MANUFACTURER'S SPECIFICATIONS. HORIZONTAL SEAMS SHALL BE MINIMIZED. ALL SPANS OF 10' OR MORE SHALL HAVE HORIZONTAL CAULKED SEAMS ALIGNED IN THE CENTER OF THE ARCHON. ALL TRIMS SHALL BE FACTORY PAINTED TO MATCH PANELS. VERTICAL APPLICATIONS ONLY (NOT FOR USE ON SOFFITS).
BRICK	VELOUR MEDIUM GRAY	CHEROKEE BRICK	SMOOTH, VELOUR, QUEEN SIZE. THIN BRICK
METAL GATES AT TRASH ENCLOSURE	"BLACK FOX" SW 7020	SHERWIN WILLIAMS	-
PRE-ENGINEERED METAL CANOPY	TO MATCH "BLACK FOX" SW 7020	ARCHITECTURAL FABRICATION	COLOR TO BE REVIEWED AND APPROVED BY STARBUCKS DESIGNER.
STOREFRONT FRAMES	DARK BRONZE ANODIZED FRAME AND DOORS	KAWNEER	REFER TO WINDOW AND DOOR SCHEDULE
HARDWARE	SATIN CLEAR FINISH	FACTORY FINISHED	REFER TO HARDWARE LEGEND
HOLLOW METAL DOOR AND FRAME	"BLACK FOX" SW 7020	SHERWIN WILLIAMS	-
DOWNSPOUTS	TO MATCH STUCCO COLOR	AEP SPAN	FACTORY APPLIED DURATECH FINISH
ROOF LADDER	TO MATCH STUCCO COLOR	SHERWIN WILLIAMS	-
MISCELLANEOUS METALS	"BLACK FOX" SW 7020	SHERWIN WILLIAMS	-
PREFINISHED METAL COPING	"BLACK FOX" SW 7020	SHERWIN WILLIAMS	-
LIGHT FIXTURE A	BLACK	KICHLER	LED (REFER TO ELECT.)
STUCCO @ TRASH ENCLOSURE	"KEYSTONE GRAY" SW 7504	SHERWIN WILLIAMS	SANDPEBBLE FINE FINISH
** COLORS AND MANUFACTURERS INDICATED ARE PREFERRED. G.C. SHALL SUBMIT SAMPLES OF PROPOSED ALTERNATES FOR ARCHITECT'S APPROVAL IN ACCORDANCE WITH DIRECTIONS IN SPECIFICATIONS			



PRELIMINARY  
NOT TO BE USED  
FOR  
REGULATORY  
APPROVAL,  
PERMITTING OR  
CONSTRUCTION

JOHN FRANZ  
architect

4035 International Plaza Suite 100  
Fort Worth, Texas 76109  
(817) 737-9922

SHELL BUILDING

1117 W. CORBETT AVE.  
SWANSBORO, NC 28584

Revisions:			
File Name:	21181_A2.1	Project No:	21181
Date:	xx/xx/22	Drawn By:	MNK
Checked By:	JWF		

File Name:	21181_A2.1	Project No:	21181
Date:	xx/xx/22	Drawn By:	MNK
Checked By:	JWF		

SHEET

A2.1

EXTERIOR ELEVATIONS