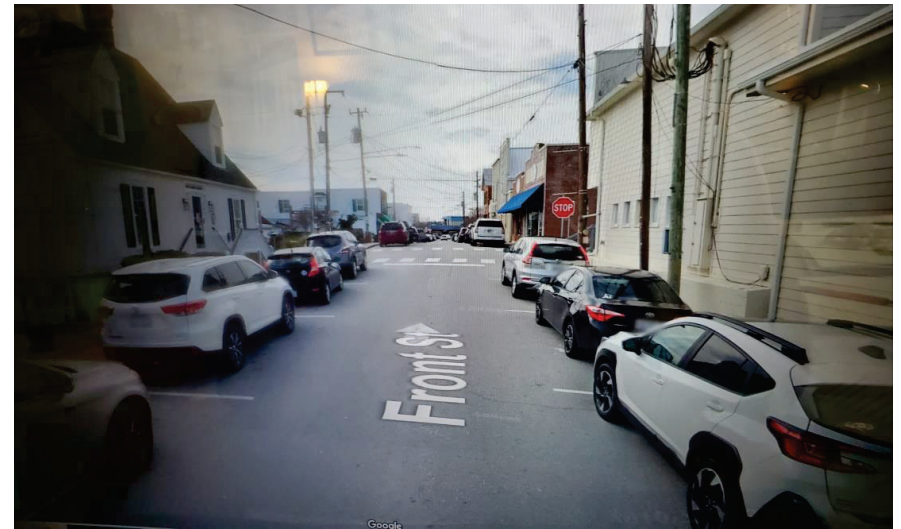
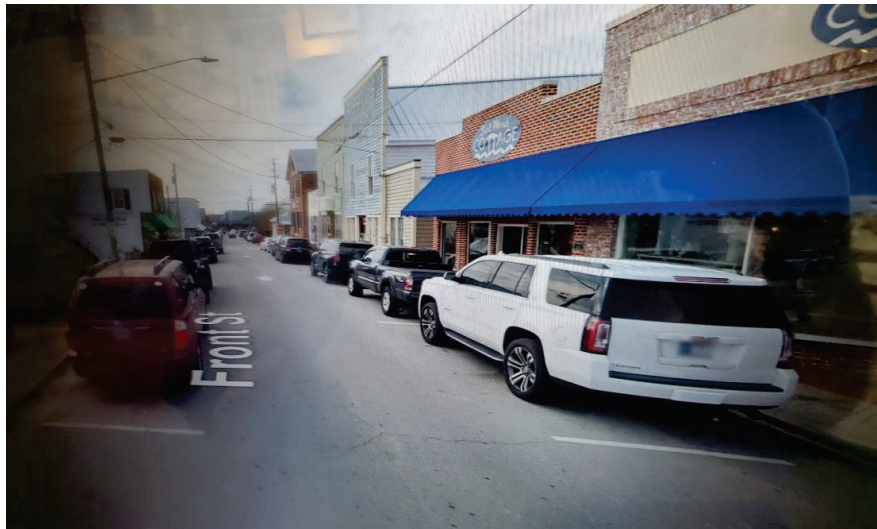




Downtown Swansboro Paid Parking



Parking Issues in the Downtown District



Issues

- Limited spaces.
- Extended parking times.
- Employees parking on street.
- Parking on both sides of street.
- Parallel parking.

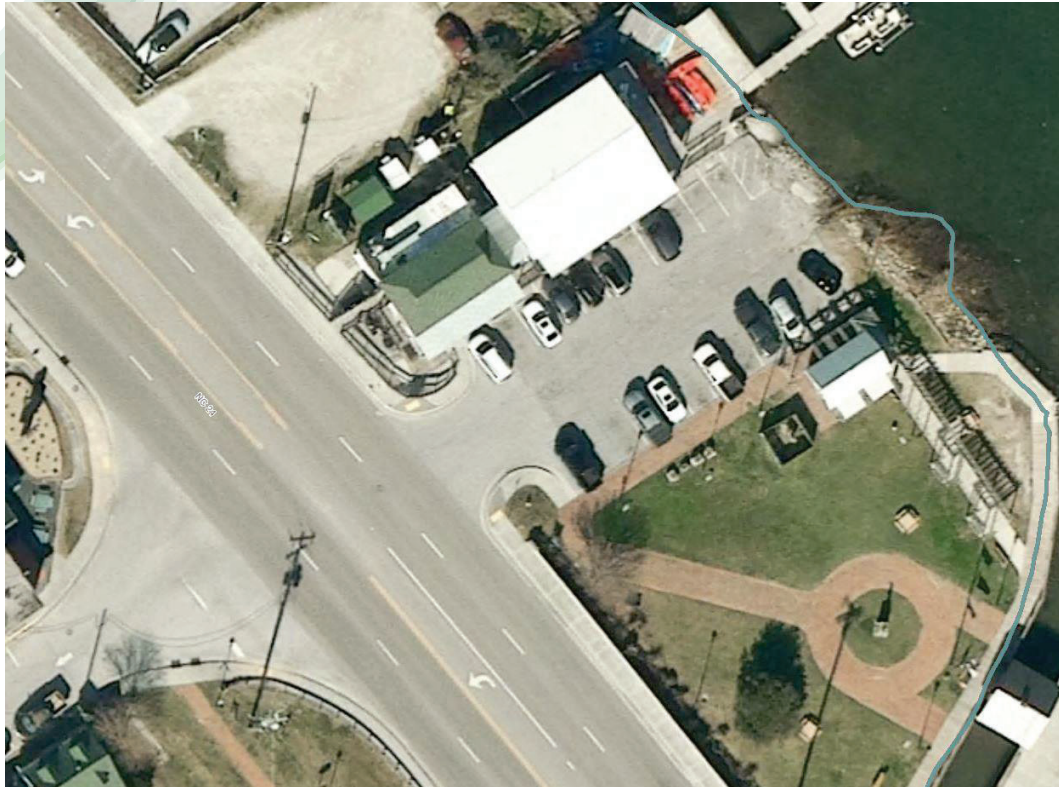


On Street Parking



Front Street

Along Front Street, on both sides of the street, a total of 44 parking spaces.

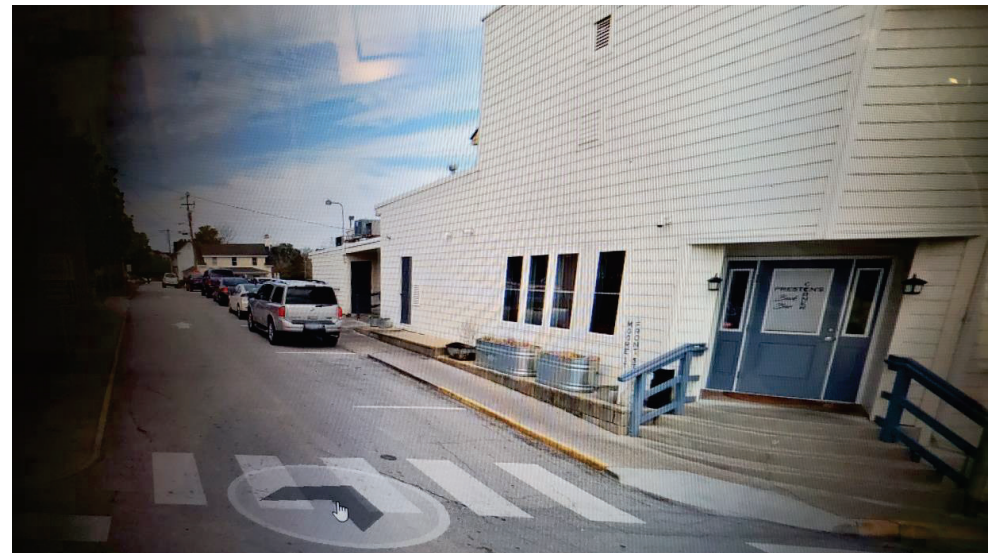


N. Front Street

22 available spaces on N. Front Street (Bicentennial Park).

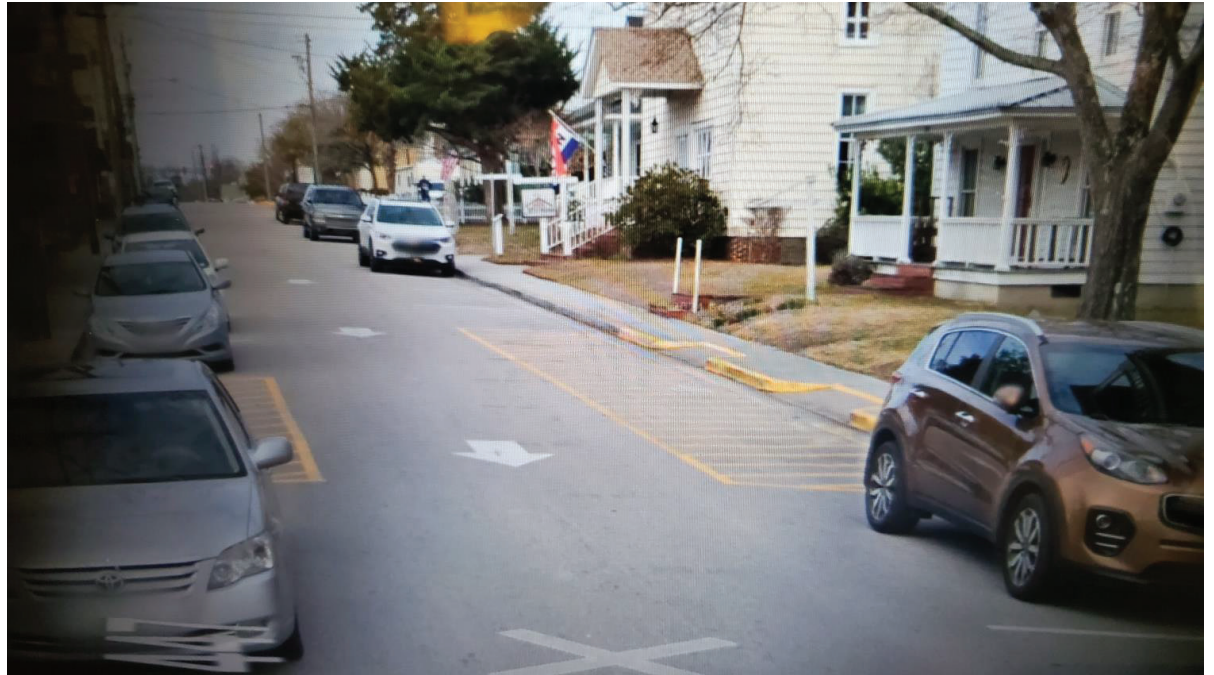
Moore Street

- 12 spaces on Moore Street from Water Street to the water (Boro).
- Another 9 spaces are available on Moore Street from Water Street to Elm Street.
- Total of 21 potential parking spaces available on Moore Street.



Main Street

- There are 17 available spaces on Main Street from Water Street to the water.
- From Water Street to Elm Street there would be an additional 14 spaces.





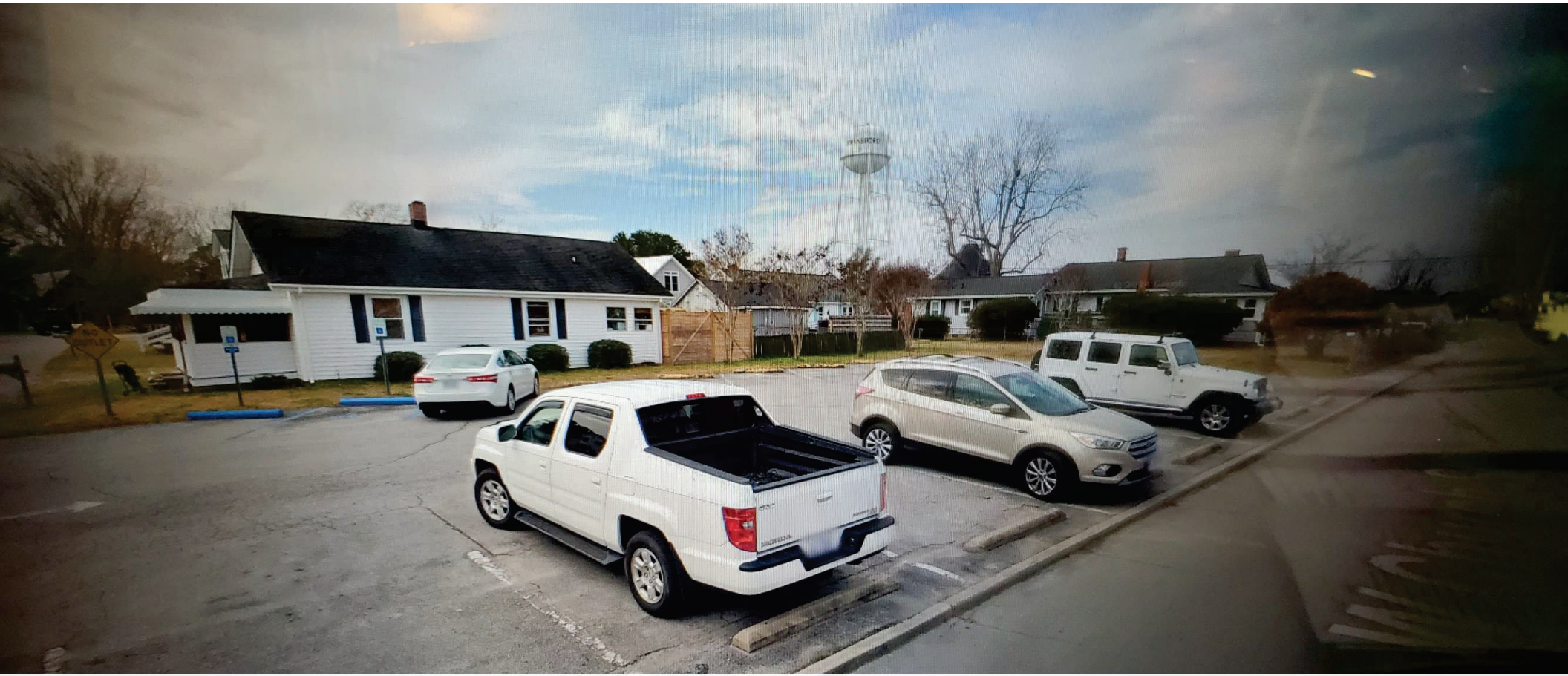
Church Street

- 4 spaces available from Front Street to Water Street.
- 7 spaces available from Water Street to Elm Street.
- 7 spaces from Elm Street to Walnut Street.

Available Spaces

- Total available spaces: Front Street, N. Front Street, Church Street, Main Street, and Moore Street, from Water Street to the water: **99 spaces.**
- Additional spaces: Water Street to Walnut Street: **37 spaces.**
- **136** potential total spaces.





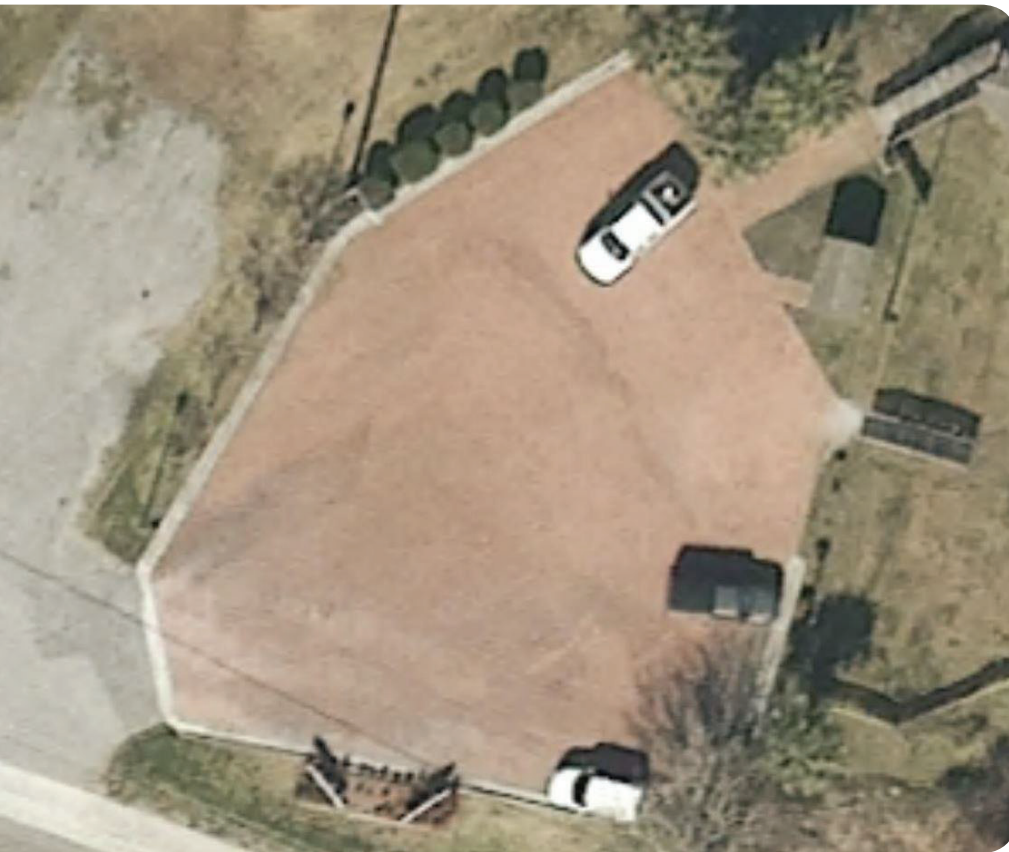
Off Street Parking

Google



Old Town Hall

15 spaces are available at
the Old Town Hall (Historical
Society) parking lot.



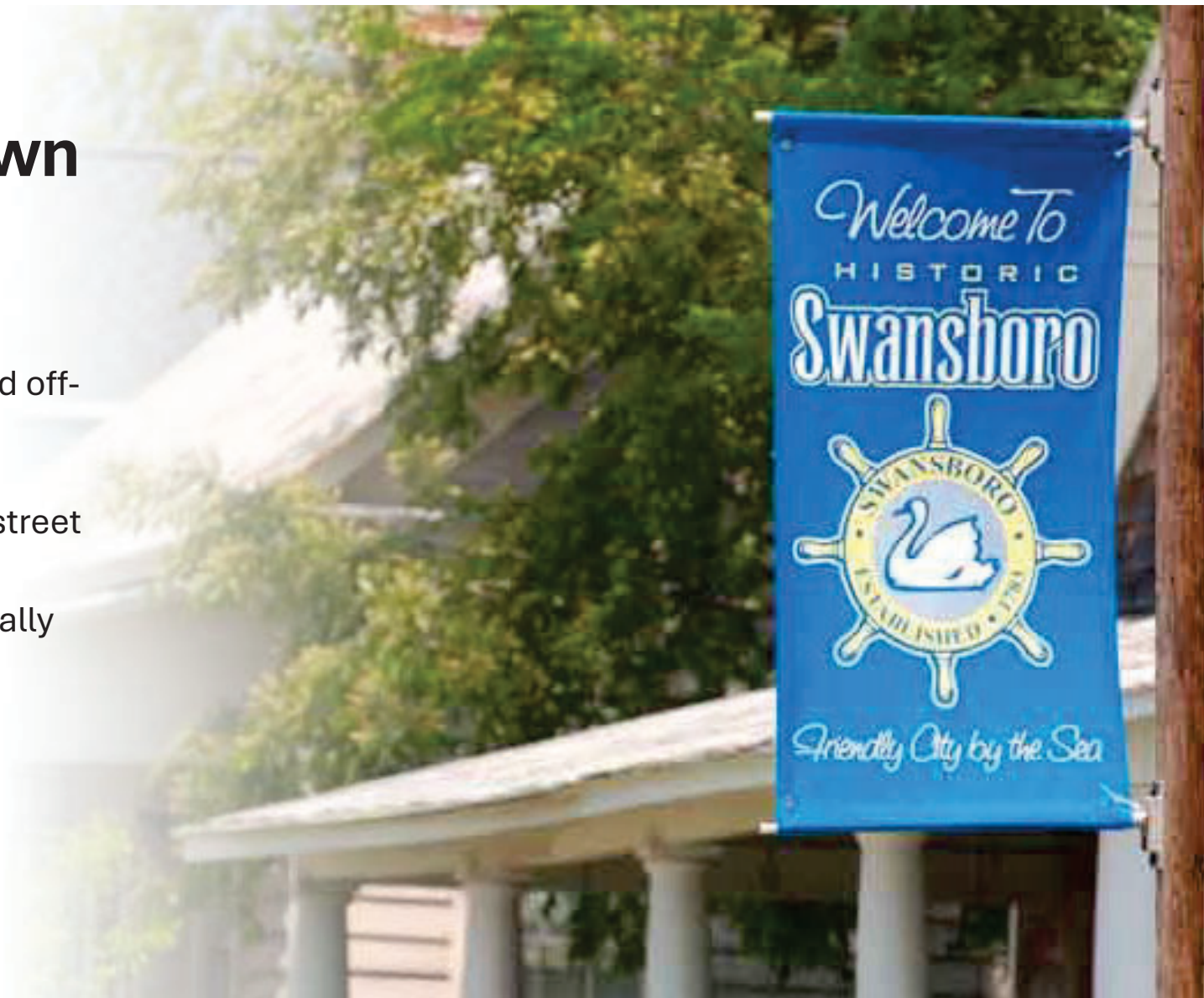
Riverview Park

Potentially 15 spaces available at Riverview Park.



Total Downtown Spaces

- Total of **129** on-street and off-street parking spaces available.
- Potential of **37** extra on-street parking spaces.
- **166** total spaces potentially available.





Beaufort

- **Population:** 4,400
- **Hours:** Seasonal (5/5-10/31); 7 days/week; 8a-5p
- **Fees:**
 - Hourly: \$3/hour
 - Daily: no daily rate
 - Weekly: \$25 (time limits)
 - Monthly: \$100/\$200 (non premium)
- **Enforcement:**
 - Parking Ambassadors: furnished by the contracting company.
 - \$50 initial fine
 - \$80 after 30 days

Atlantic Beach

- **Population:** 1,364 permanent/50,000 summer
- **Hours:** Seasonal (4/1-9/30; 7 days/week; 9a-5p)
- **Fees:**
 - Hourly: \$5/hour
 - Daily: no daily rate
 - Weekly: no weekly rate
 - Annual: \$200
 - Residents: 2 free passes
- **Enforcement:** Operating company provides enforcement.
 - \$50 initial fine
 - \$60 after first 24 hours
 - \$75 after ten days.
- **Spaces:** 300 spaces in numerous places around the town.





Emerald Isle

- **Population:** 3,800 permanent; 40,000 during the summer.
- **Hours:** Seasonal (4/1-9/30); 7 days/week; 8a-6p
- **Fees:**
 - Spring: \$2/hour
 - Summer: \$4/hour
 - Daily: \$16 maximum
 - Residents: 2 free annual passes
- **Enforcement:** Operating company provides enforcement.
 - \$50 initial fine.
 - \$80 after 30 days.
- **Revenue:**
 - Approximately \$150,00

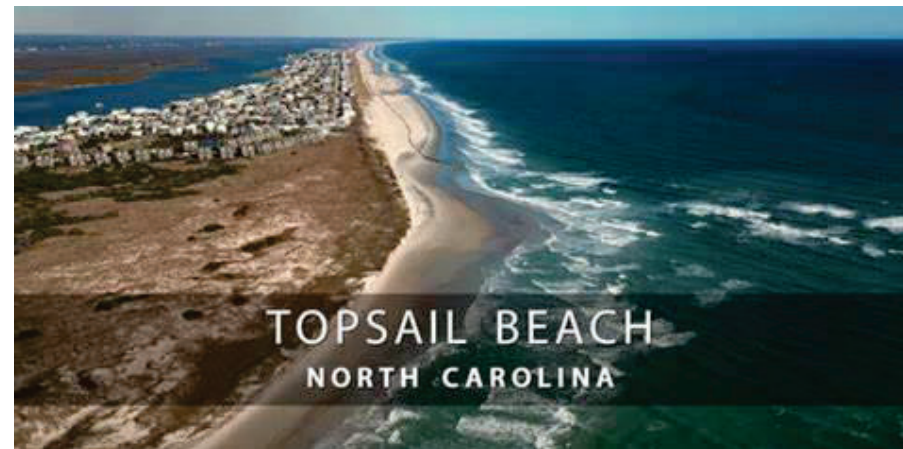
North Topsail Beach

- **Population:** 1,005
- **Hours:** Year-round; 7 days/week; 9a-5p
- **Fees:**
 - Hourly: \$5
 - Daily: \$25
 - Weekly: \$100
 - Annual: \$150/vehicle (\$250 for 2 simultaneous)
 - Residents: no exemption
- **Enforcement:** Operating company provides enforcement.
 - \$50 initial fine (\$25 paid same day)
 - \$75 after 30 days
- **Revenue:** \$730,000 estimated
- **Spaces:** Approximately 900 spaces on town owned lots. No on-street parking.



Topsail Beach

- **Population:** 461
- **Hours:** Seasonal (3/1-10/31); 7 days/week; 9a-5p
- **Fees:**
 - Hourly: \$5
 - Daily: \$25
 - No weekly/annual passes
 - Residents: no exemption
- **Enforcement:** Operating company provides enforcement.
 - \$50 initial fine (\$25 same day)
 - \$75 after 30 days
- **Revenue:** Approximately \$83,000
- **Spaces:** 194 spaces





Surf City

- **Population:** 3,867 permanent/30,000 summer
- **Hours:** Seasonal (3/1-10/31); 7 days/week; 9a-6p
- **Fees:**
 - Hourly: \$5
 - Daily: \$25
 - Weekly: \$180
 - Annual: \$270
 - Residents: 2 free passes
- **Enforcement:** Operating company provides enforcement.
 - \$50 initial fine
- **Revenue:** Estimated \$659,000
- **Spaces:** 1,300 on-street/off-street parking around the town.



New Hanover & Brunswick County Beaches

- Seasonal (3/1-10/31)
- 7 days/week
- 7a-7p
- Hourly Rate: \$5/hour
- Daily Rate: \$20-\$25
- Weekly Rate: \$80-\$150
- Annual Rate: \$100-\$175
- Residents: \$10-\$50/vehicle (3max)
- Enforcement provided by company(Pivot)
- Fines: \$50 initial fine. Increases after determined number of days.



Concerns with paid parking downtown

- Fees: Hourly rate/Daily rate/Weekly rates/Annual passes?
- Taxpayer exemptions to fees?
- Hours of Operation: 7 days per week/Mon-Fri/Times/Seasonal?
- Managing the system?
- Enforcement?
- How are violations paid?
- Where does revenue go?
- Creating Town Ordinance?

Paid Parking

- Management of the system would be through the operating company.
- Enforcement would be provided by the operating company.
- Fines would be paid to the operating company.
- Revenue would be disbursed by the operating company. Contract would determine the terms. (i.e. 70/30 split).
- Town Ordinance for parking and fee schedule.
- NC GS: 160A-301 (a) governs paid, on-street parking.



NC GS 160A-301

(a)

A city by ordinance may regulate, restrict, and prohibit the parking of vehicles on the public streets, alleys, and bridges within the city. When parking is permitted for a specified period of time at a particular location, a city may install a parking meter at that location and require any person parking a vehicle therein to place the meter in operation for the entire time that the vehicle remains in that location, up to the maximum time allowed for parking there. Parking meters may be activated by coins, tokens, cash, credit cards, debit cards, or electronic means. Proceeds from the use of parking meters on public streets must be used to defray the cost of enforcing and administering traffic and parking ordinances and regulations.



Question?