



Sign #1 Existing Sign, photo above. Size 16 inches by 9 Inches, .9375 square feet. Attached to the office front door with wood screws. Painted Metal. One-sided. Colors: Green, Black and White

Sign #2 New Sign. Same graphic as Sign #1 above. Size 4 Foot by 2.5 Feet. Ten square feet. Painted Wood. Hung from the building's overhang roof on existing chains. Two sides. Colors: Green, Black and White.

Total Sign Square Footage: 10.9375 square feet. Note existing 18 S.F. Monteverde Store Sign (Pictured Below).

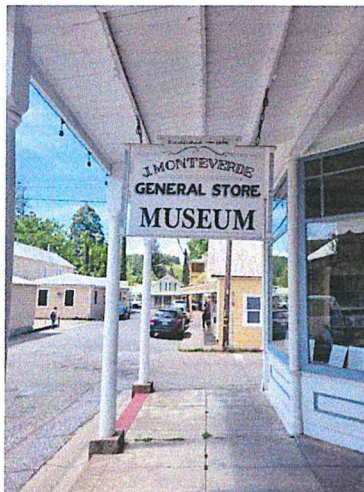
Total allowable signage: 80 feet of building frontage, in the Historic Corridor - 70 Square Feet



Office Door, Sign #1 will be placed below the window.



Existing Chains. Sign #2 will be hung from these.



Existing Monteverde Store Sign 4.5 Feet by 4 Feet, 18 Square Feet