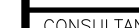




SHEET No. VS101

1°=10'-0"



BCH: CF
7CBGHFI 7H=CB
THIS DRAWING PROVIDED ONLY FOR
9GH=A 5H=B;
DI FDCG9G

| | | |
|-------|-------|--------------|
| | | |
| MARK: | DATE: | DESCRIPTION: |

OWNER

PROJECT TITLE

KINGDOM HALL OF
JEHOVAH'S WITNESSES
40 GOLD DUST TRAIL
SUTTER CREEK, CA

SHEET TITLE:

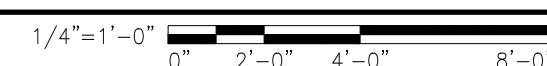
DEMOLITION
FLOOR PLAN

PROJECT No.

20002

SHEET No.

AD101



1 PLAN - DEMOLITION FLOOR PLAN



BCH: CF
7CBGHFI 7H=CB
THIS DRAWING PROVIDED ONLY FOR
9GH=A 5H=B;
DI FDCG9G

KINGDOM HALL OF
JEHOVAH'S WITNESSES
40 GOLD DUST TRAIL
SUTTER CREEK, CA

EXTERIOR ELEVATIONS
SOUTH AND EAST

20002

A-201

1. TOP OF STRUCTURAL CONCRETE ELEVATION = 0'-0" = DATUM ELEVATION. SEE CIVIL ENGINEERING PLANS FOR BUILDING TOP OF FINISH FLOOR ELEVATION.
2. ALL LIGHT FIXTURE DIMENSIONS ARE TO CENTERLINE OF ELECTRICAL BOX.
3. TRIM AT DOOR AND WINDOW HEAD TO BE 1X5½ TRIM BOARDS, AND SHALL EXTEND 2" BEYOND VERTICAL TRIM ON EACH SIDE.
4. SEE SHEET A-506 FOR THE MECHANICAL ENCLOSURE ELEVATION.

COLOR PACKAGE: [CANYON | BIRCH | STREAM] (SELECT ONE)

ACCENT TRIM COLOR (DOORS, WINDOWS, CORBELS, ETC.)

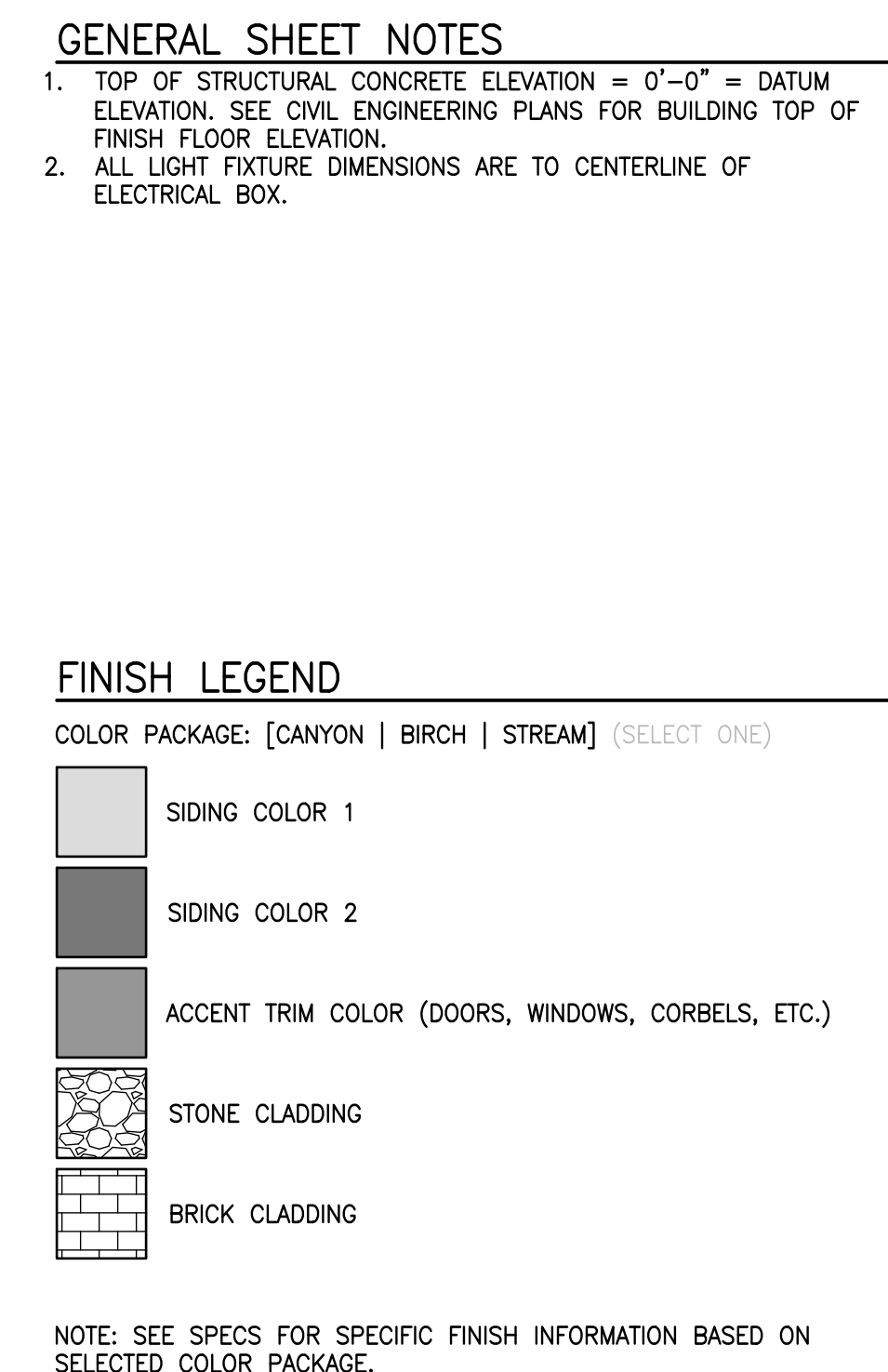
NOTE: SEE SPECS FOR SPECIFIC FINISH INFORMATION BASED ON
SELECTED COLOR PACKAGE.

$1/4^\circ = 1' - 0''$

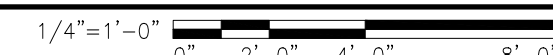
1/4"=1'-0"

0' 2'-0" 4'-0" 8'-0"

PLOT DATE: 3 Aug 25 PLOTTED BY: Imari
DIMSCALE: 1.0000 DSCN\DRFT:
FILE PATH: C:\Users\Imari\Watchtower\USA18



$1/4^* = 1' - 0^*$



(P) ELEVATION - EXTERIOR EAST

BCH: CF
7CBGHFI 7H=CB
THIS DRAWING PROVIDED ONLY FOR
9GH=A 5H=B;
DI FDCG9G

ET No. A-202


PLOT DATE: 3 Aug 25 PLOTTED BY: Imari
DIMSCLAE: 1.0000 DSGN\DRFT:
FILE PATH: C:\Users\Imari\Watchtower\USA18



A RENDERINGS - SOUTH WEST



B RENDERINGS - NORTH WEST



CONSULTANT:

BCH: CF
7CBGHFI 7H=CB
THIS DRAWING PROVIDED ONLY FOR
9GH=A 5H=B;
DI FDCG9G

[illegible]

OWNER:

PROJECT TITLE:
KINGDOM HALL OF
JEHOVAH'S WITNESSES
40 GOLD DUST TRAIL
SUTTER CREEK, CA

SHEET TITLE:

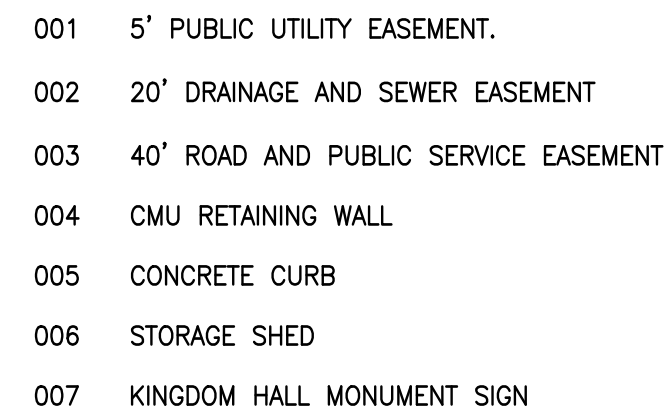
RENDERINGS

PROJECT No. _____

20002

SHEET No.

A-2

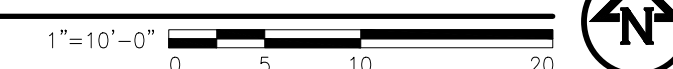


CONSTRUCTION ITEMS:

- CS01 INSTALL ACCESSIBLE PARKING SIGN/BOLLARD PER DETAIL 1/C-501.
- CS02 INSTALL VAN ACCESSIBLE PARKING SIGN/BOLLARD PER DETAIL 1/C-501.
- CS03 INSTALL DETECTABLE WARNING MAT PER DETAIL 5/C-501.
- CS04 PAINT ACCESSIBLE PARKING STALL STRIPING AND ISA PAVEMENT SYMBOL PER DETAILS 4/C-501, 6/C-501 AND 7/C-501.
- CS05 CONSTRUCT CONCRETE WALK PER DETAIL 4/C-502.
- CS06 CONSTRUCT HANDRAILS PER DETAIL 10/C-501.
- CS07 CONSTRUCT CONCRETE WALK WITH TURNDOWN PER DETAIL 9/C-501.
- CS08 NEW BUILDING COLUMN. SEE STRUCTURAL PLANS.
- CS09 CONSTRUCT 48" HIGH CHAINLINK FENCE PER DETAIL 12/C-501.
- CS10 CONSTRUCT 24' X 48" HIGH CHAINLINK ROLLING GATE PER DETAILS -----
- CS11 INSTALL UNAUTHORIZED PARKING SIGN IN GATE POST PER DETAILS 2/C-501 AND 3/C-501.
- CS12 PAINT PARKING SPACE STRIPING PER DETAIL 8/C-501.
- CS13 CONSTRUCT CONCRETE PAVEMENT PER DETAILS ON SHEETS----- AND SPECIFICATIONS ON SHEETS C-003 AND C-004.
- CS14 CONSTRUCT ASPHALT PAVEMENT PER DETAIL 13/C-501 AND SPECIFICATIONS ON SHEET C-004.
- CS15 APPLY SLURRY SEAL PER SPECIFICATIONS ON SHEET C-004.
- CS16 DRAIN TILE
- CS17 DRAINAGE INLET
- CS18 PARKING LOT LIGHT (SEE ELECTRICAL PLANS)
- CS19 HVAC UNITS (SEE MECHANICAL PLANS)

1. REFER TO C-001 COVER SHEET FOR GENERAL NOTES REFERENCING SURVEY INFORMATION, DATUMS, GENERAL PROJECT AND CONSTRUCTION INFORMATION.
2. CONTRACTOR SHALL PROVIDE AND INSTALL TRAFFIC CONTROL DEVICES IN CONFORMANCE WITH MANUAL ON UNIFORM TRAFFIC CONTROL DEVICES (MOST RECENT EDITION AS REVISED) AND AS REQUIRED BY THE CITY OF SUTTER CREEK DURING CONSTRUCTION WITHIN THE PUBLIC R.O.W. CONTRACTOR SHALL BE RESPONSIBLE FOR TRAFFIC CONTROL IN THE PROJECT AREA.
3. REQUIRED SIGNAGE AND STRIPING OF FIRE ZONES OR ACCESS LANES SHALL BE AS REQUIRED BY FIRE OFFICIAL.
4. PAINT ALL PARKING STALLS, STOP BARS, CROSSWALKS AND HANDICAP ACCESSIBLE SPACES. ALLOW PAVING TO AGE 30 DAYS BEFORE APPLYING MARKINGS.
5. DIMENSIONS SHOWN ON PLANS ARE TO EDGE OF PAVEMENT OR FACE OF CURB UNLESS OTHERWISE NOTED.
6. SOLID WASTE WILL BE PRIVATELY HANDLED. WASTE ACCUMULATED DAILY IS FROM LITTLE TO NONE AND IS DISPOSED OFF-SITE BY THE PRIVATE. NO KITCHENS OR DAY CARE SERVICES WILL BE PART OF THE USE OF THE BUILDING. NO DUMPSTER OR MUNICIPAL SERVICE IS NECESSARY.

1 SITE PLAN



BCH: CF
7CBGHFI 7H=CB
THIS DRAWING PROVIDED ONLY FOR
9GH-A 5H-B;
DI FDCG9G

KINGDOM HALL OF
JEHOVAH'S WITNESSES
40 GOLD DUST TRAIL
SUTTER CREEK, CA

SITE PLAN

| | |
|-------------|-------|
| PROJECT No. | 20002 |
| SHEET No. | CS101 |

OWNER:

PROJECT TITLE:

SHEET TITLE:

PROJECT No. _____

SHEET No.
