

Amador City/ Sutter Creek Bicycle & Pedestrian Improvement Project

Draft Conceptual Plan 12/13/24 Completed by ACTC staff



AMADOR CITY-Segment 1

Image 1-Downtown Amador City onto Water Steet/Amador Creek Rd.

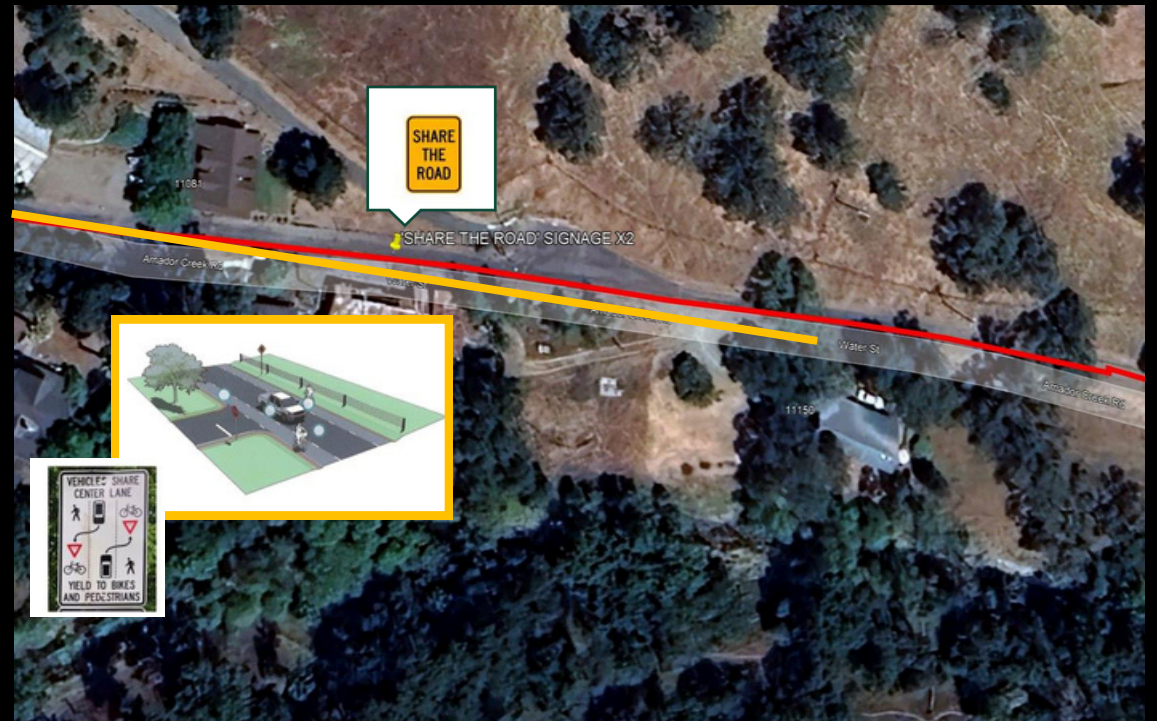
- BikeStencil- paint bike stencils on Old SR 49 towards Water St.
- BikeStencil- paint bike stencil on Water St. just off Old SR49
- Brochure map & Kiosk-Create and provide trail map and install kiosk



Image2-Water St./Amador Creek Rd. approximately located at Latitude=38°25'16.08"N/ Longitude=120°49'6.51"W

- 'SharetheRoad'signx2--install signs on already existing poles (one in each direction).

Optional AdvisoryShoulder /InstructionalSignage--install Advisory Shoulder (yellow line) along Water St and Amador Creek Road as applicable. and install instructional sign and pole at the entrance of each side of the Advisory Shoulder.



County- Segment 2

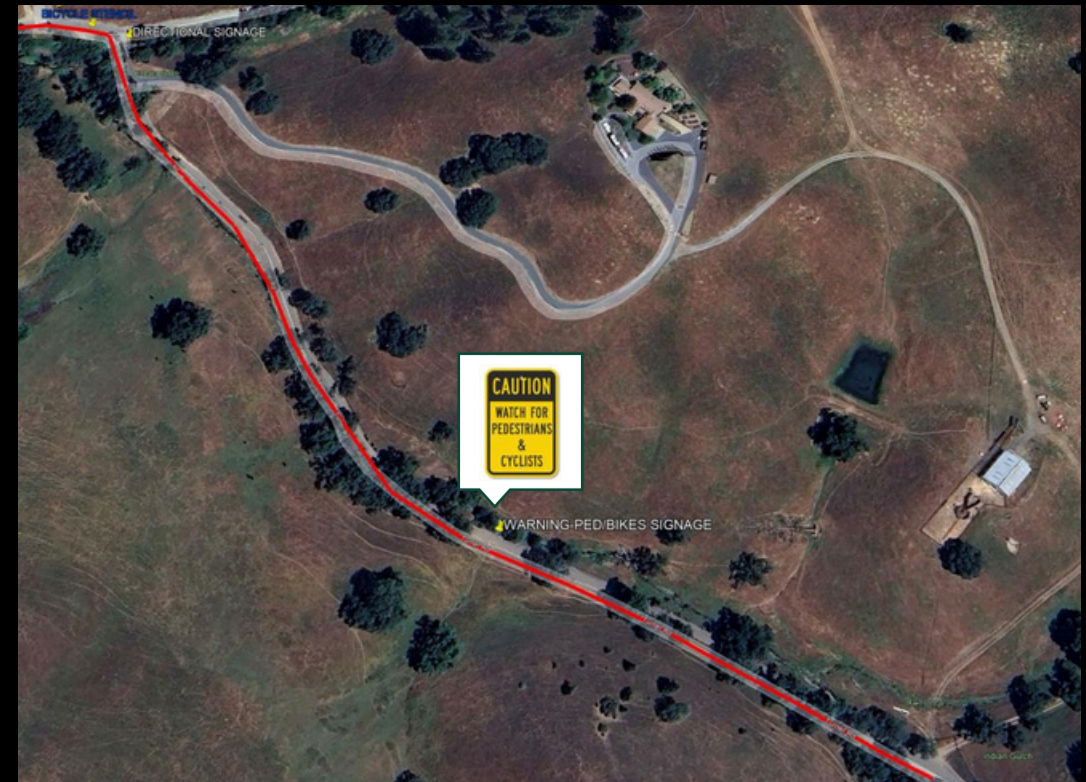
Image 3-Amador Creek Rd. to Turner Rd.

- [Bikestencils](#)-paintbike stencils on roadway in two(2) locations (approximate locations shown on map)
- Road/Directional Signage- County to replace missing Turner Rd sign, city to install directional signage in two(2)locations on existing poles for downtown Amador City, Drytown, and SutterCreek.



Image 4-Turner Rd.

- Warningped/bikesign- install warning signage and pole at this approximate location (Latitude=38°25'9.01"N / Longitude=120°48'42.35"W)



County- Segment 2

Image 5- Turner Rd. towards Stringbean Alley/ Amador Rd. intersection

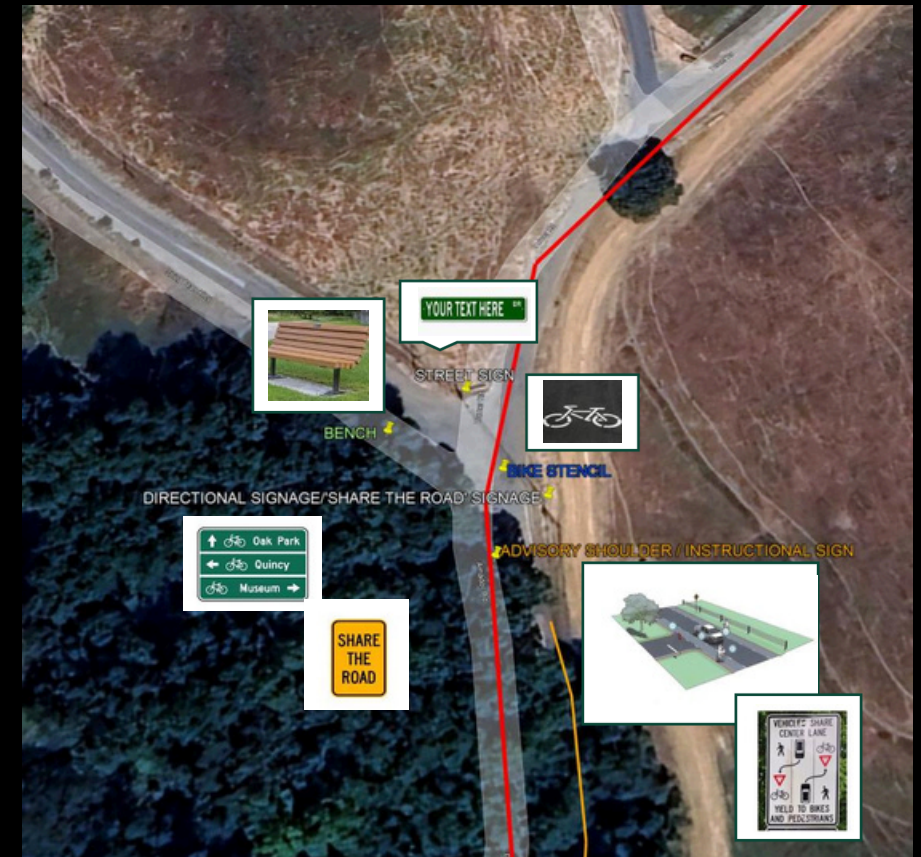
>

Warning ped/bike signage- install warning signage and pole at this approximate location
(Latitude= 38°24'43.41"N /Longitude=120°48'32.27"W)



Image 6-Turner Rd./Stringbean Alley/Amador Rd. intersection

- > Street Sign-County to replace missing streetsign on existing pole
- Bench-install one (1) bench
- Bike Stencil- paint bike stencil on the road heading towards Turner rd.
- Directional/'Share the Road' signage- install signs on existing poles.
- Advisory Shoulder / Instructional Sign- install Advisory Shoulder along Amador Rd. (orange line) and install instructional sign and pole at the entrance of each side of the Advisory Shoulder.



County-Segment 2

Image 7-Amador Rd.

- **AdvisoryShoulder /InstructionalSignage**-install Advisory Shoulder (orange line) along Amador Rd. and install instructional sign and pole at the entrance of each side of the Advisory Shoulder.

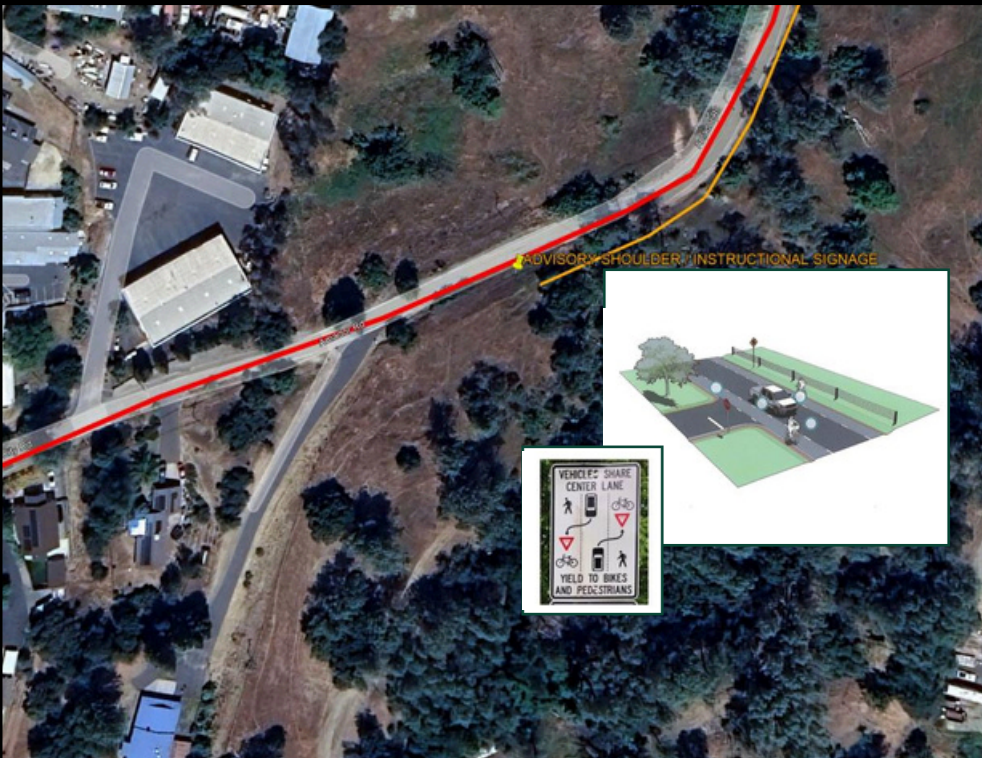
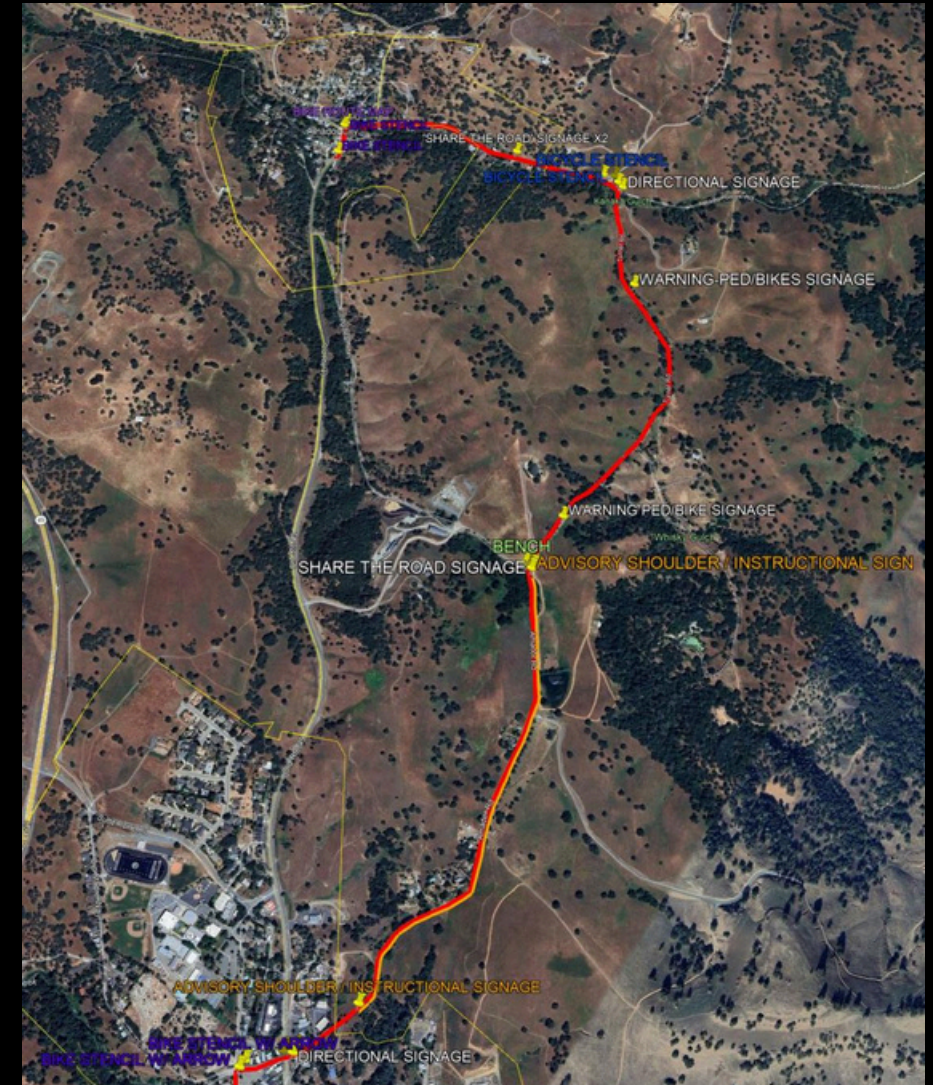


Image 8- Overview of Amador City(Segment 1) to County (Segment 2) with city limit boundary lines.



Sutter Creek- Segment 3

Image 9- Amador Rd./Old 49 (yellow)/N. Amelia St.



Bike Stencil—paint bike stencils in two locations (Amador Rd./N. Amelia St.)

Crosswalk w/ Flashing Beacons- install a cross walk with flashing beacons on either side

Directional Signage- Install sign and pole (bike route to downtown Amador City)

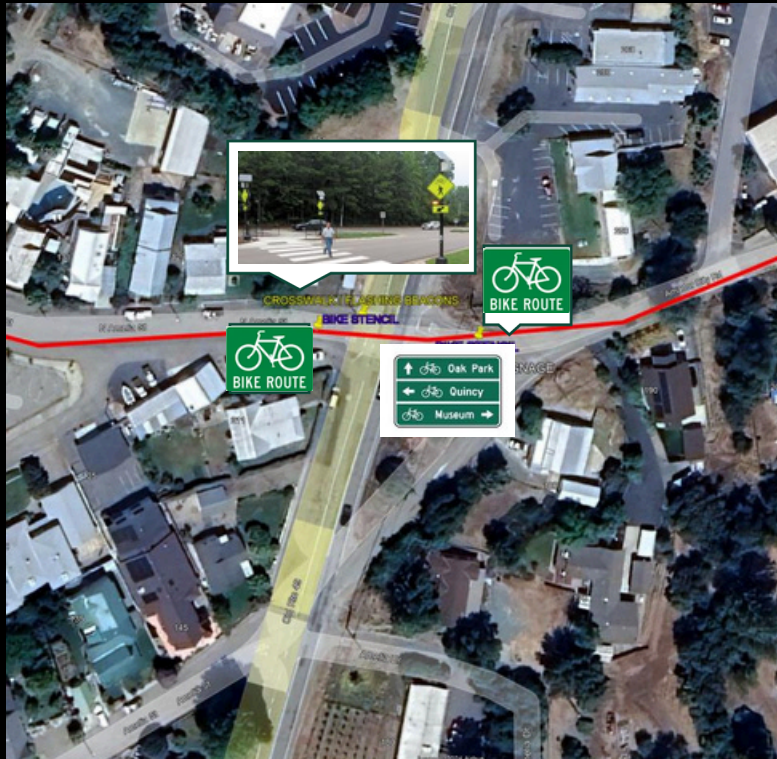


Image 10- N. Amelia towards Spanish St.

➤ **Bike Stencil w/ Arrow**—paint bike stencil with Left directional arrow at N. Amelia stop towards Spanish St.

Bike Stencil w/ Arrow—paint bike stencil with Right directional arrow at Spanish St. stop towards N. Amelia

Bike Route Sign w/ arrow- Bike Route Signage with Right directional arrow from/towards Main St.



Sutter Creek-Segment 3

Image 11- Spanish St. towards Main St.

Bike Route Sign w/ arrow- Bike Route Signage with Right directional arrow towards Main St.

Route Sign w/ arrow- Bike Route Signage Left directional arrow on Main St. towards Spanish St. (mounted to building)

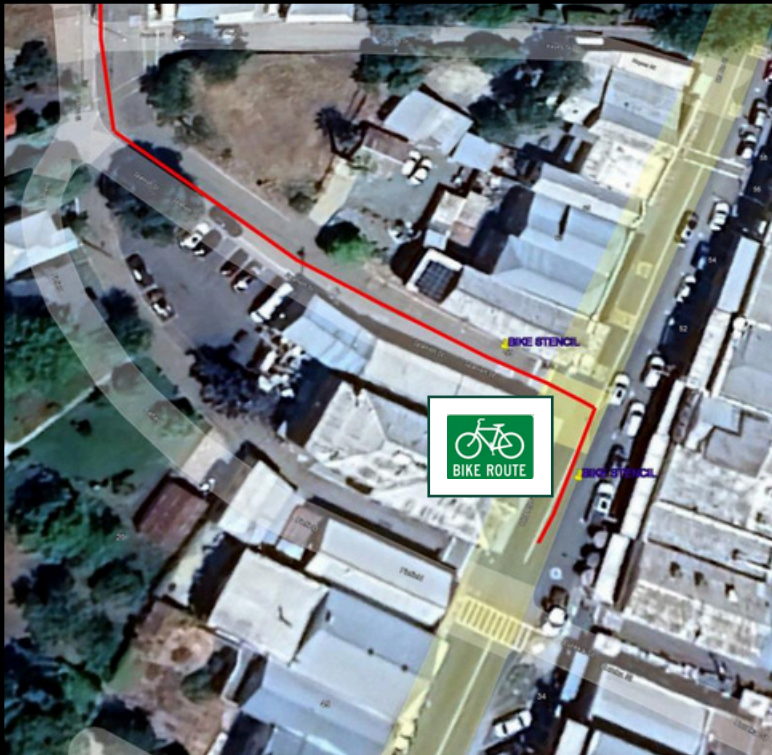
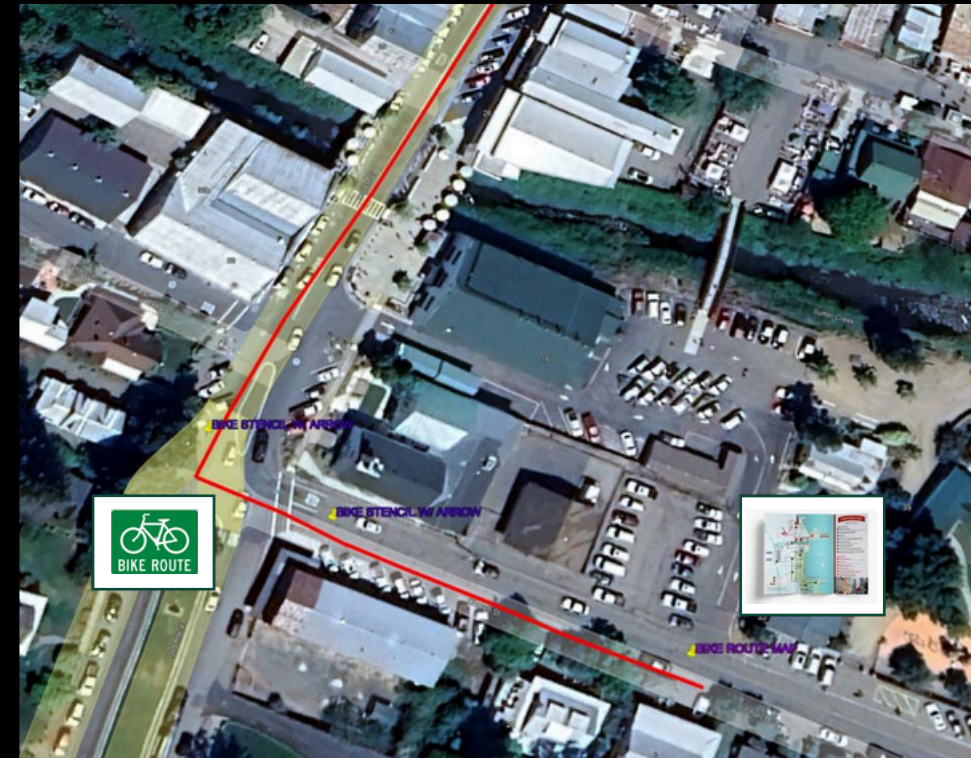


Image 12- Main St. to Church St.

Bike Route Sign w/ arrow- Bike Route Signage with Left directional arrow towards Church St.

Bike Route Sign w/ arrow- Bike Route sign with Right directional arrow towards Main St.

Brochure map & Kiosk- Create and provide trail map and install kiosk



Sutter Creek- Segment 3

Image 13- overview of Sutter Creek-Amador Rd. to Church St.(Segment 3) with city limit boundary lines.

Plan Amendment 1 7.5.25

Stencil Markers are to be replaced with Bike Route Signage in Sutter Creek City Limits.

