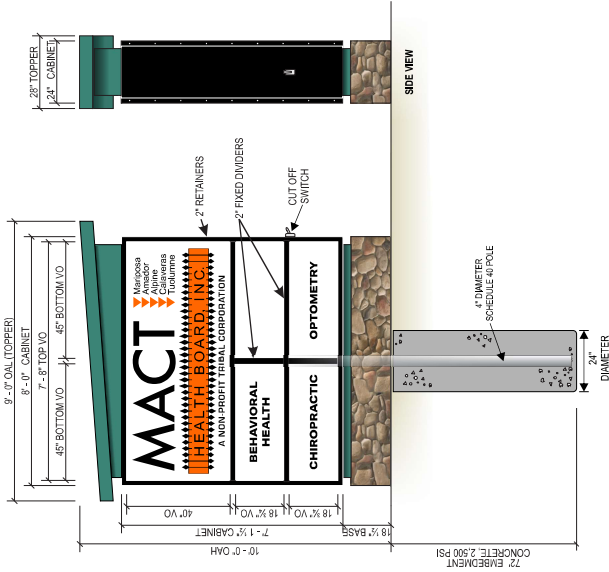


PROPOSED SIGNAGE **A** SOUTH ELEVATION



11379 Pyrites Way, Suite B
Rancho Cordova, CA 95670
PHONE • 916-349-1800
EMAIL • info@capitoneon.com
WEBSITE • capitoneon.com



D/F MONUMENT SIGN - INT ILLUM

CABINET SIZE - 7'-1 1/2" x 8'-0" x 24" WIDE
 CABINET - 24 GA SMETAL, TEXCOAT & PTM SW TRICORN BLACK, SEMIGLOSS LATEX
 TOPPER - 24 GA SMETAL, TEXCOAT & PTM SW FOREST GREEN SEMIGLOSS LATEX
 BASE - 24 GA SMETAL, TEXCOAT & PTM SW FOREST GREEN SEMIGLOSS LATEX
 (REFER TO ORDER # CEO184289A708082, 06/25/24) & STONE OVERLAY
 FACE TYPE - INDIVIDUAL, REMOVABLE PANELS
 FACE MATERIAL - .150 WHITE LEXAN
 BACKGROUND COLOR - 015 WHITE
 COPY COLOR - 220-22 MATTE BLACK AND 230-44 ORANGE VINYL
 RETAINERS - 2" - PICTURE FRAME TYPE
 DIVIDER(S) - FIXED - 2"
 ILLUMINATION - LED LAMPS AND POWER SUPPLIES
 ALL SIGNAGE TO BE UNDERWRITERS LABORATORIES LISTED
 PROPERTY FRONTAGE - 100+ FEET SETBACK - 10'

CAPITOL NEON TO FABRICARE, PERMIT & INSTALL SIGN

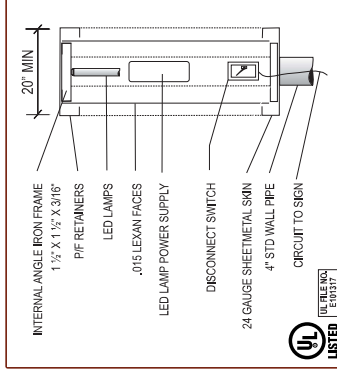
ACCOUNT: MACT
 ADDRESS: 321 Highway 49
 Sutter Creek, CA 95685
 SALES REP: Alex Leon

CONTACT: John Dunlap
 PHONE: (209) 674-6186
 DATE: 01-19-2026
 PERMIT: City of Sutter Creek

DESIGNER:
 REVISION: 01.26.26
 FILE NAME: MACT Sutter Creek Monument
 SCALE: 1/4" = 1' (1:48)

APPROVED BY: _____
 CUSTOMER: _____
 LANDLORD: _____

**THIS SIGN TO BE INSTALLED
 IN ACCORDANCE WITH THE
 REQUIREMENTS OF THE 2025 CBC
 (CALIFORNIA BUILDING CODE)
 AND CEC 2025
 (CALIFORNIA ELECTRICAL CODE)**



DOUBLE FACED CABINET

TITLE 24 COMPLIANT

PHOTOCELL	INTERMATIC K4121C STEM MOUNT, (15 AMP)
BALLASTS	ELECTRONIC FUNDAMENTAL OUTPUT FREQUENCY ABOVE 20 KHZ

SCOPE OF JOB

- (A) FABRICATE ONE D/F MONUMENT SIGN.
- (B) SECURE PERMIT, CITY OF SUTTER CREEK.
- (C) INSTALL SIGNAGE ON SITE.