

- Unincorporated Communities
- Administrative Areas
- City Limits
- Amador County Boundary
- Parcels
- Road Centerlines
- State Highway
- Major Road
- Local Road



1" = 88 ft

Aerial photography, if displayed,
© DigitalGlobe, Inc., All Rights Reserved

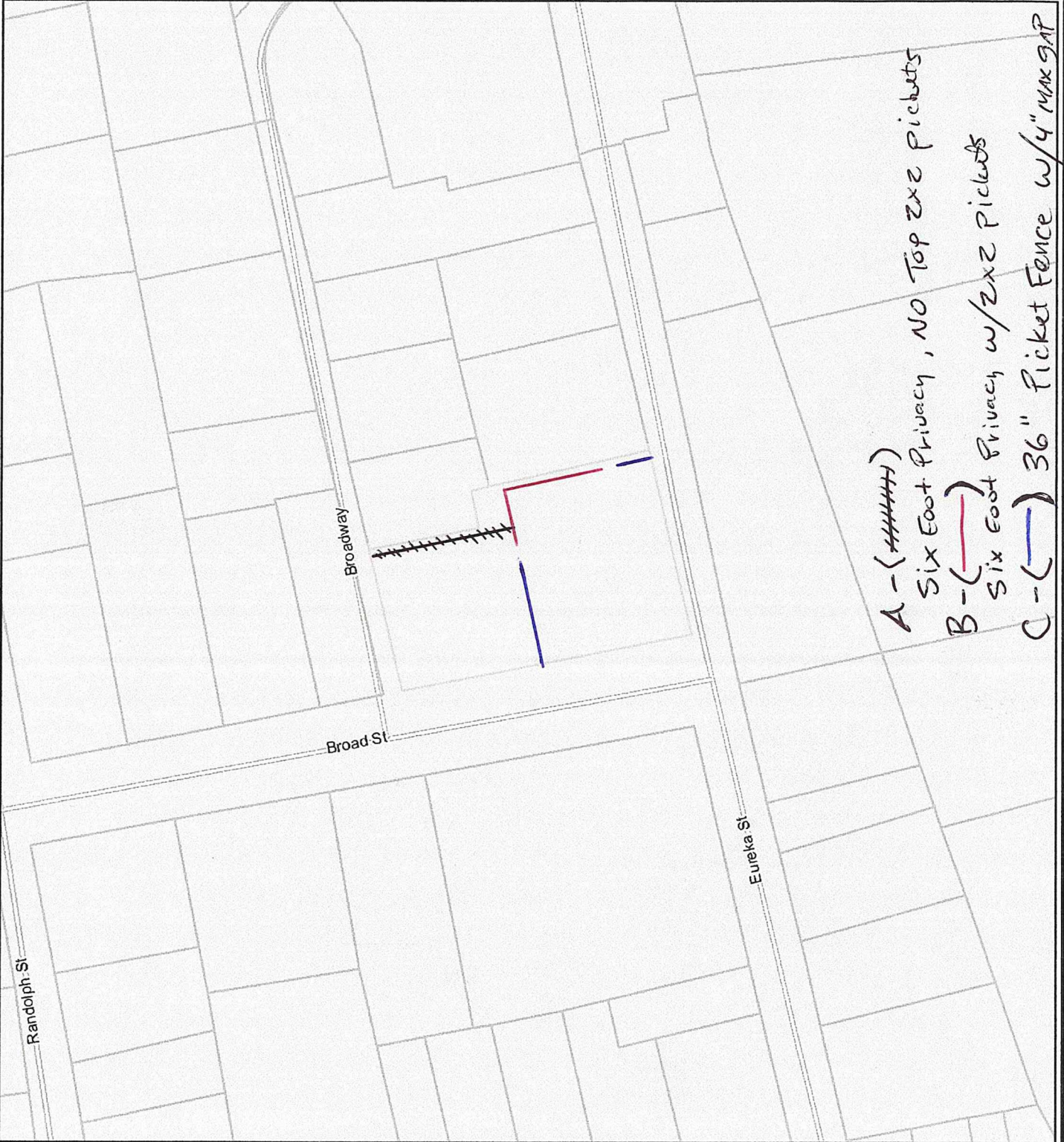
Notes



The County of Amador assumes no responsibility arising from use of this information. THE MAPS AND ASSOCIATED DATA ARE PROVIDED WITHOUT WARRANTY OF ANY KIND, expressed or implied, including but not limited to, the implied warranties of merchantability and fitness for a particular purpose. Do not make any business decisions based on this data before consulting your decision with the appropriate County Office.

Amador County GIS Viewer
Amador County Information Technology Dept.
810 Court St, Jackson CA 95642

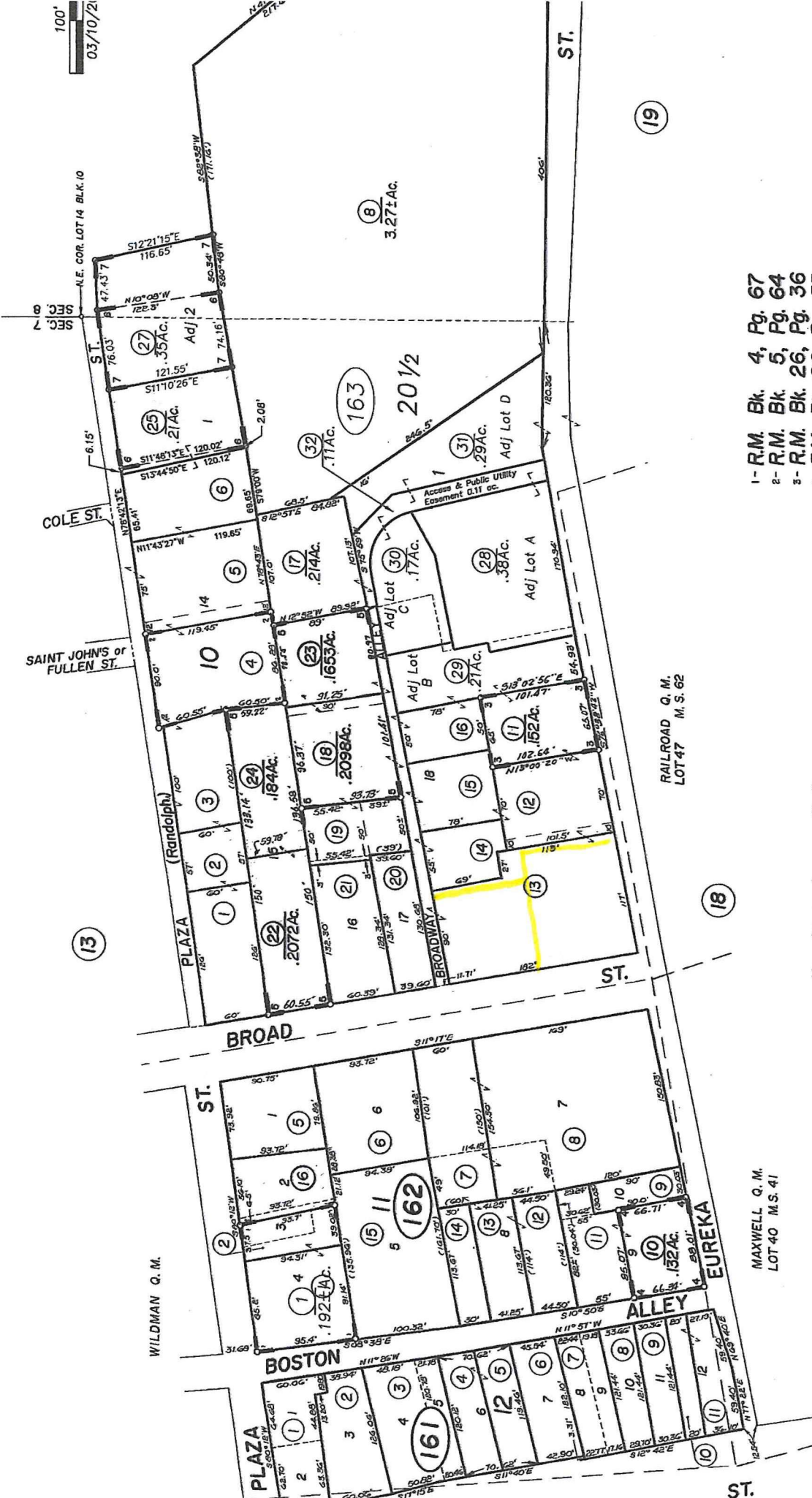
October 21, 2024



A - (#####) Six Foot Privacy, NO Top 2x2 Pickets
B - (—) Six Foot Privacy w/2x2 Pickets
C - (—) 36" Picket Fence w/4" MAX GAP

POR. SEC. 7&8, T.6N., R.11E., M.D.B. & M.

Tax Area Code
4-002



- 1- R.M. Bk. 4, Pg. 67
- 2- R.M. Bk. 5, Pg. 64
- 3- R.M. Bk. 26, Pg. 36
- 4- R.M. Bk. 26, Pg. 55
- 5- R.M. Bk. 12, Pg. 33
- 6- R.M. Bk. 46, Pg. 2 (12/3/91)
- 7- R.M. Bk. 60, Pg. 35 (12/27/07)

Assessor's Map Bk. 18, Pg
County of Amador, Calif

NOTE—Assessor's Block Numbers Shown in Ellipses.
Assessor's Parcel Numbers Shown in Circles.

Map changes become effective with the 2017-2018 roll year. Parcel numbers are subject to change prior to adoption of roll on each July 1.

NOTE: This Map Was Prepared For Assessment Purposes Only. No Liability Is Assumed For The Accuracy Of The Data Delineated Hereon.

MAXWELL Q. M.
LOT 40 M.S. 41

ST.