

BPAC recap Field Trip-day 2 (Turner Rd./Stringbean/Amador Rd. intersection to downtown Sutter Creek)

Turner Rd./Amador Rd./Stringbean intersection to approximately 400 Ft. from Old 49 in Sutter Creek (highlighted section) on Amador Rd. install 2 'Share the Road' signs, 1 for each side of the road (location TBD) and create an advisory shoulder the entire length (image 2).

Image 1

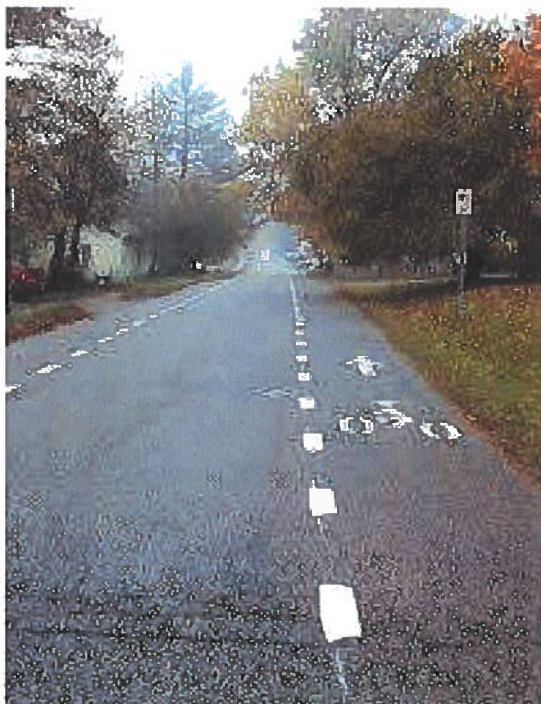


Image 2

Old 49/Amador Rd./N. Amelia St. intersection- install a crosswalk with flashing beacons, use stencil to paint a bicycle on either side of the intersection, and install a pole (located in red square) for Amador Rd. street sign and directional signage to Amador City.

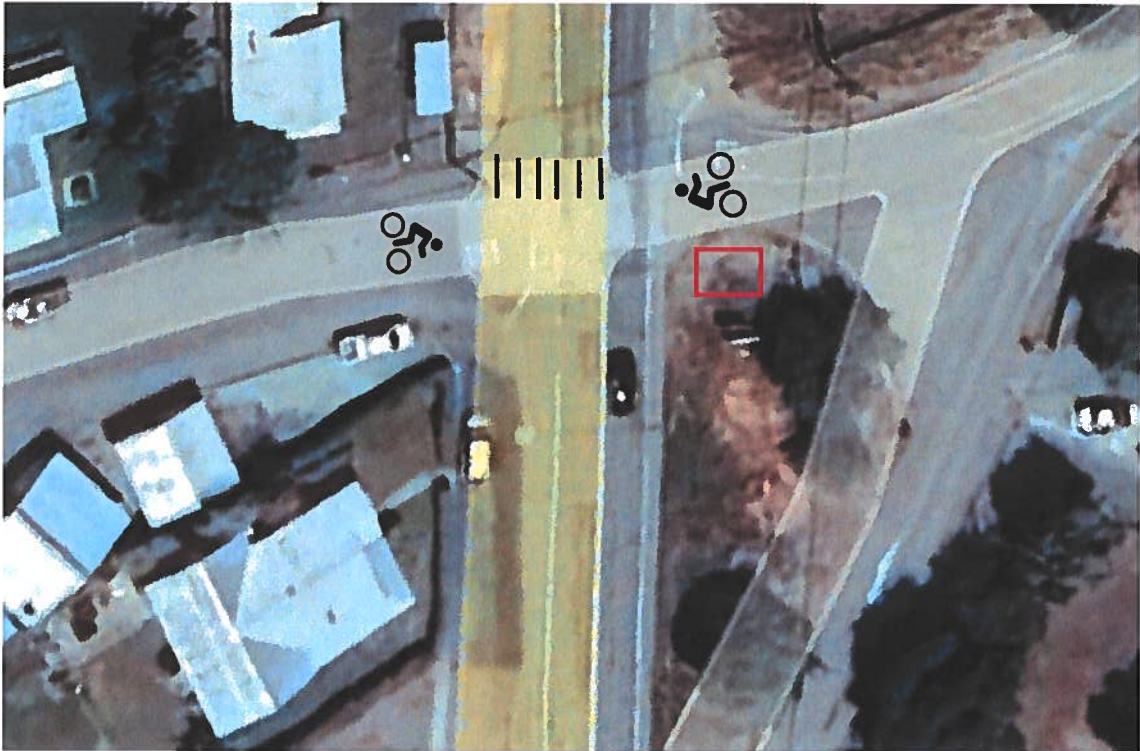


Image 3



Image 4

N. Amelia St./Spanish St. intersection- paint bicycle stencil and with directional arrow pointing towards Spanish St. on N. Amelia.

Image 5



On Spanish St. also install a bicycle stencil with arrow pointing toward N. Amelia St.

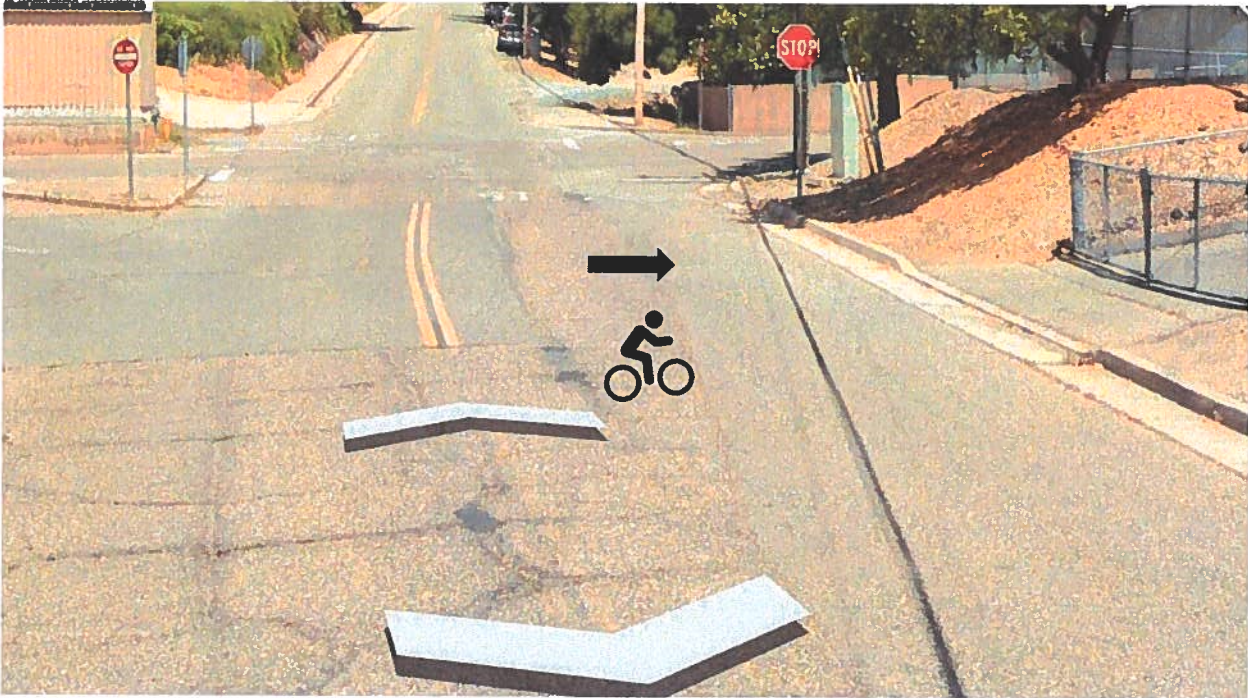


Image 6

Spanish St.- 2 'Share the Road' signs for both directions  
(location TBD).



Image 7

Spanish St./Main St. intersection- Coming up to the Spanish St. stop, install a bicycle stencil with arrow pointing right onto Main St.

Image 8

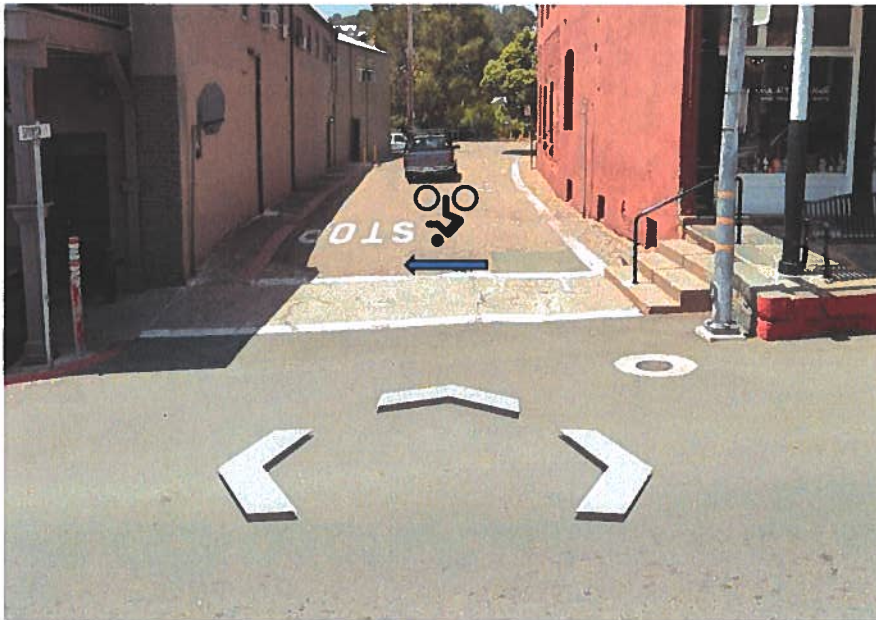
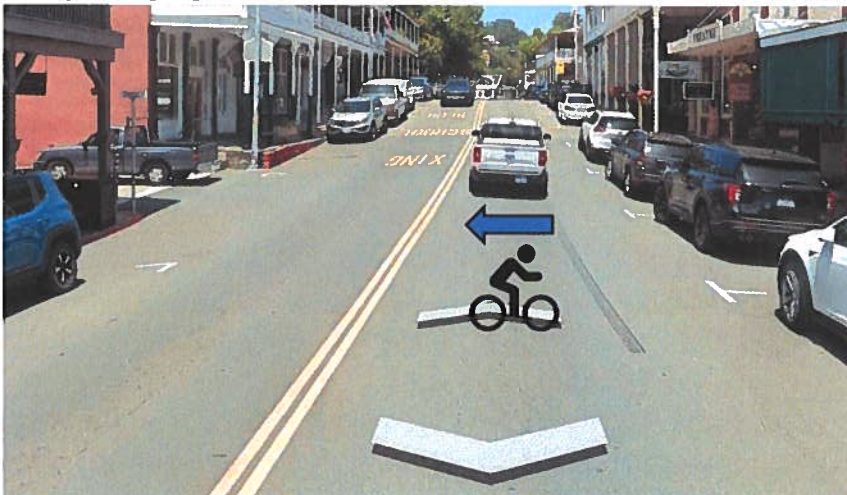


Image 9

on Main St. install a bicycle stencil with an arrow pointing left onto Spanish St. Potentially may need to change to signage for this location.



Old 49/Main St./Badger- install bicycle paint stencil with arrow pointing left onto Church St.

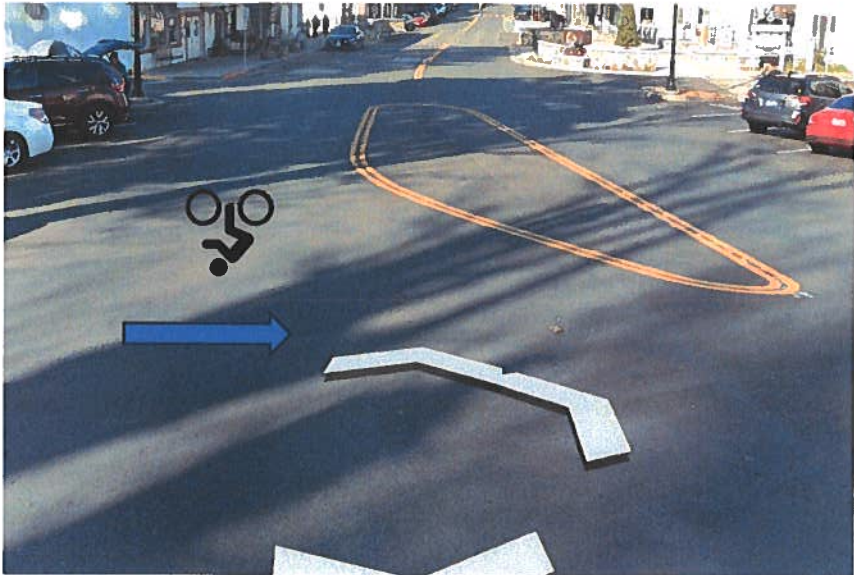


Image 10

Church St./Main St./Old 49- install bicycle pain stencil with arrow pointing right towards town.



Image 11

Additional notes- purchase stencils for both cities of Sutter Creek and Amador City, add bicycle stencil/arrows at locations in Amador City as well- TBD