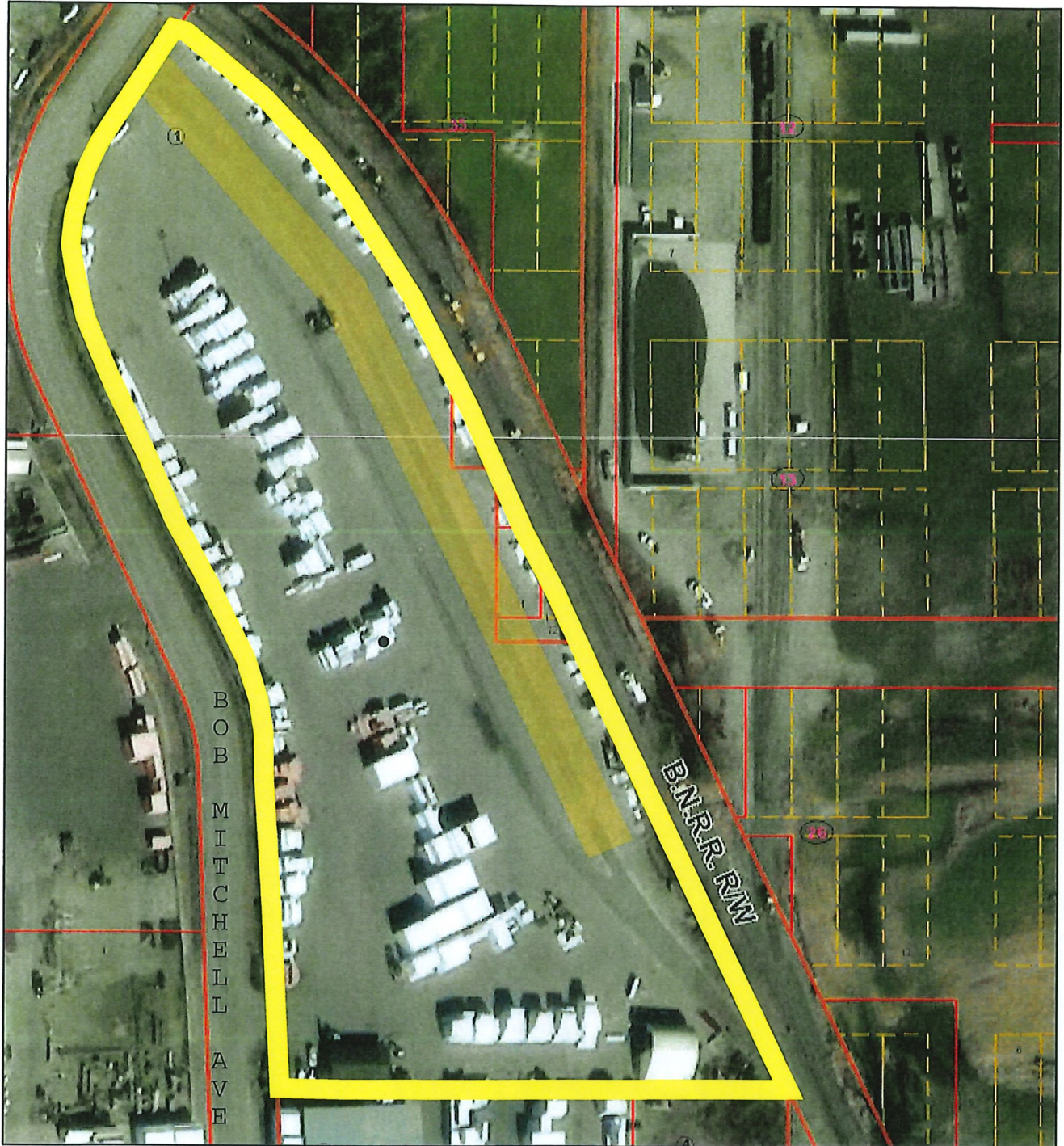
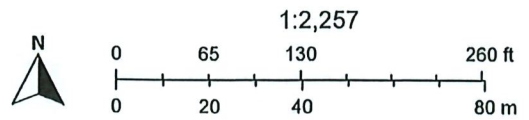


Arrow Sumas Reload (Whatcom Tax Parcel Map)



- Subdivisions
- Tax Parcels
- Lots
- Quarter Sections
- Sections
- Encumbrances
- City Boundaries
- Conditional Use Area

Property Area = 283,000 sq. ft.



Maxar, Microsoft, Whatcom County, Whatcom County, Esri, HERE, Garmin, IPC, NRCan

ARROW

Arrow Reload Washington Inc
300 Bob Mitchell Ave, Sumas, WA 98295 USA
<https://www.arrow.ca/reload/>

Arrow is a 100+ year transportation solutions company with its headquarters in Kamloops, British Columbia, Canada. Arrow operates in 15 cities in the United States. The Sumas, Washington location was acquired in 2023 from Mountain View Reload. Arrow purchased the land in early 2025. Arrow Sumas currently handles primarily lumber and building materials as a transload facility between trucks and railcars.

Arrow has an opportunity to diversify operations to transload fluid products such as molten sulfur and fuels including diesel and renewable diesel, gasoline, and ethanol. At Arrow, safety is paramount. Using a combination of training, documented processes and mechanical systems, we safely transload over 10,000 railcars (> 20,000 trucks) per year. To perform our fluid transfers, we use a sophisticated and purpose-built transloading gantry, like the one shown below. Arrow follows established standard operating procedures to handle the products safely. Hoses are connected to dripless interlocks to minimize spills; integrated systems confirm positive earth grounding and provide automatic overflow protection. Liquid volume is precisely metered to capture accurate measurements of product moving between trucks and railcars, and rail track is bonded and grounded to reduce the risk of static buildup.

Site features

- Located in industrial park west of the city along Bob Mitchell Ave
- 6.5 Acres of space
- Rail service by BNSF
- Two rail tracks and 21 railcar spots
- Paved lot and fenced
- Security cameras



Transloaders are wheeled for easy relocation and have grounding systems, closed loop vapor recovery lines, and overflow protection to minimize environmental impact.