

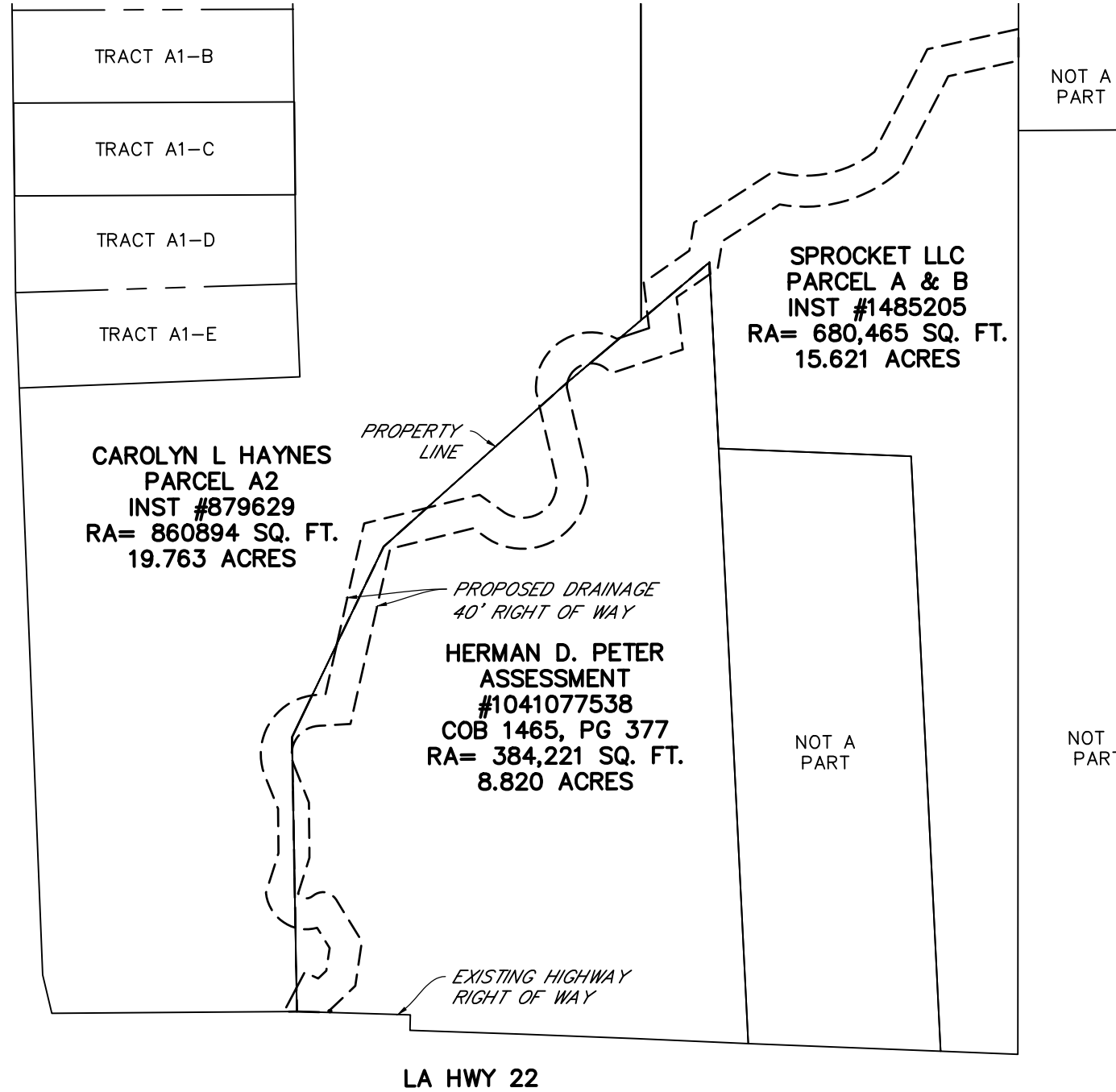
GENERAL NOTES

THE LOCATIONS OF UNDERGROUND AND OTHER NONVISIBLE UTILITIES SHOWN HEREON HAVE BEEN DETERMINED FROM DATA EITHER FURNISHED BY THE AGENCIES CONTROLLING SUCH DATA AND/OR EXTRACTED FROM RECORDS MADE AVAILABLE TO US BY THE AGENCIES CONTROLLING SUCH RECORDS. WHERE FOUND, THE SURFACE FEATURES OF LOCATIONS ARE SHOWN. THE ACTUAL NONVISIBLE LOCATIONS MAY VARY FROM THOSE SHOWN HEREON. EACH AGENCY SHOULD BE CONTACTED RELATIVE TO THE PRECISE LOCATION OF ITS UNDERGROUND INSTALLATION PRIOR TO ANY RELIANCE UPON THE ACCURACY OF SUCH LOCATIONS SHOWN HEREON, INCLUDING PRIOR TO EXCAVATION AND DIGGING.

SERVITUDES

THE SERVITUDES AND RESTRICTIONS SHOWN ON THIS SURVEY ARE LIMITED TO THOSE SET FORTH IN THE DESCRIPTION FURNISHED US AND THERE IS NO REPRESENTATION THAT ALL APPLICABLE SERVITUDES AND RESTRICTIONS ARE SHOWN HEREON. THE SURVEYOR HAS MADE NO TITLE SEARCH OR PUBLIC RECORD SEARCH IN COMPILING THE DATA FOR THIS SURVEY.

**GREENSBURG LAND DISTRICT
T-7-S, R-10-E, SECTION 17**



VICINITY MAP
NOT TO SCALE

GRID NORTH
NORTH REFERENCED TO LOUISIANA STATE PLANE COORDINATE SYSTEM SOUTH ZONE, NAD 83

GRAPHIC SCALE

1 INCH = 200 US SURVEY FEET

P:\10546 Raiford Oaks Right Of Way Takings Prev BFM #10124\DWG\10546 R1 Apw.dwg

SCALE: 1" = 100'	
DATE: JULY 14, 2022	
DRAWN: APW	CHECKED: GJL
CREW: -	
FILE No. 10546	PROJECT No. 10546
SHEET 1	OF 9

**PROPOSED DRAINAGE RIGHT OF WAY
PARISH PROJECT NO. EN 1800023
HDCA PROJECT NO. 2019-08
ST. TAMMANY PARISH, LOUISIANA**

I certify that this plat represents an actual ground survey made by me or under my direction, and it does conform to the requirements for the Minimum Standards for Property Boundary Surveys as found in Louisiana Administrative Code TITLE 46: LXI, Chapter 29 for a Class D survey.

H. DAVIS COLE & ASSOCIATES, L.L.C.

BFM
CORPORATION LLC
A PROFESSIONAL LAND SURVEYING COMPANY

15 Veterans Memorial Boulevard
Kenner, Louisiana 70062
(504) 468-8800 Fax (504) 467-0065
www.bfmcorporation.com info@bfmcorporation.com

REGISTERED
PROFESSIONAL LAND SURVEYOR
GARY J. LAMBERT JR.
REGISTRATION NO. 5259

**GREENSBURG LAND DISTRICT
T-7-S, R-10-E, SECTION 17**

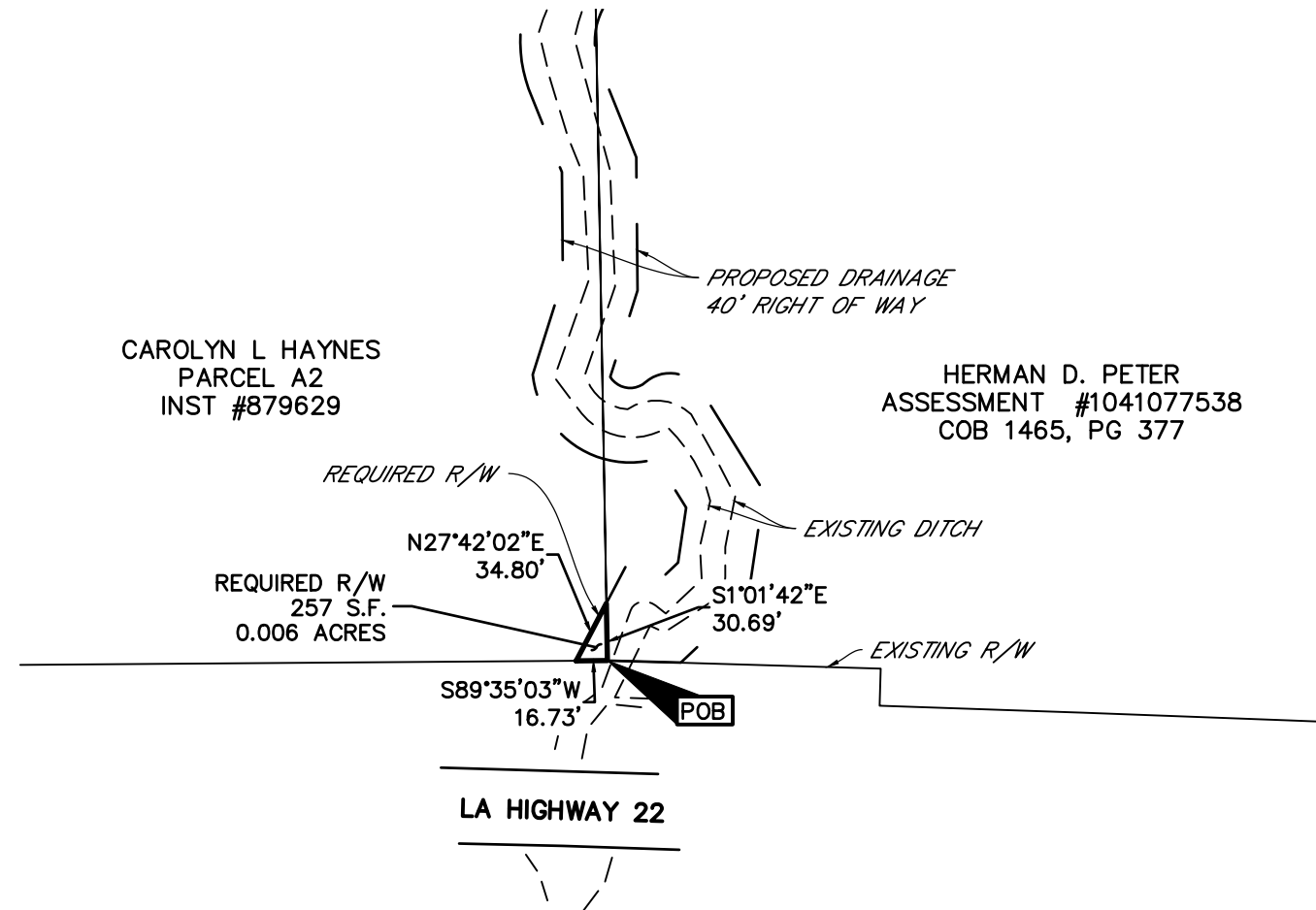
COMMENCING AT A POINT ON THE NORTH RIGHT OF WAY LINE OF LA HIGHWAY 22, AT THE COMMON CORNER OF CAROLYN L. HAYES PROPERTY AND HERMAN D. PETER PROPERTY, THE POINT OF BEGINNING.

THENCE PROCEED ALONG THE NORTH RIGHT OF WAY LINE OF LA HIGHWAY 22, S89°35'03"W FOR A DISTANCE OF 16.73 FEET TO A POINT.

THENCE PROCEED N27°42'02"E FOR A DISTANCE OF 34.80 FEET TO A POINT.

THENCE PROCEED S01°01'42"E FOR A DISTANCE OF 30.69 FEET TO THE POINT OF BEGINNING.

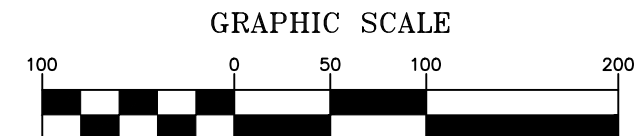
THE ABOVE DESCRIBED PROPERTY CONTAINING 256.66 SQUARE FEET OR 0.006 ACRES OF LAND, MORE OR LESS.



PARCEL NUMBER	RW-1
LOT NUMBER	A2
OWNER	CAROLYN L HAYNES
ACQUISITION	INST.# 879629
TAKING AREA	0.006 ACRES (257 S.F.)
REMAINING AREA	19.763 AC. (860,894 S.F.)



GRID NORTH
NORTH REFERENCED TO
LOUISIANA STATE PLANE
COORDINATE SYSTEM
SOUTH ZONE, NAD 83



1 INCH = 100 US SURVEY FEET

P:\10546 Raiford Oaks Right Of Way Takings Prev BFM #10124\DWG\10546 R1 Apw.dwg

SCALE: 1" = 100'	
DATE: JULY 14, 2022	
DRAWN: apw	CHECKED: GJL
CREW: -	
FILE No. 10546	PROJECT No. 10546
SHEET 2	OF 9

**PARCEL RW-1
& PROPOSED DRAINAGE RIGHT OF WAY
PARISH PROJECT NO. EN 1800023
HDCA PROJECT NO. 2019-08
ST. TAMMANY PARISH, LOUISIANA**

I certify that this plat represents an actual ground survey made by me or under my direction, and it does conform to the requirements for the Minimum Standards for Property Boundary Surveys as found in Louisiana Administrative Code TITLE 46: LXI, Chapter 29 for a Class D survey.

H. DAVIS COLE & ASSOCIATES, L.L.C.



15 Veterans Memorial Boulevard
Kenner, Louisiana 70062
(504) 468-8800 Fax (504) 467-0065
www.bfmcorporation.com info@bfmcorporation.com

**GREENSBURG LAND DISTRICT
T-7-S, R-10-E, SECTION 17**

COMMENCING AT A POINT ON THE NORTH RIGHT OF WAY LINE OF LA HIGHWAY 22, AT THE COMMON CORNER OF CAROLYN L. HAYES PROPERTY AND HERMAN D. PETER PROPERTY, THENCE PROCEED N01°01'42"W FOR A DISTANCE OF 108.26 FEET TO A POINT, THE POINT OF BEGINNING.

THENCE PROCEED ALONG A NON TANGENT CURVE TO THE RIGHT, HAVING A RADIUS OF 52.53 FEET, AND A CHORD BEARING N40°06'53"W, A CHORD LENGTH OF 59.13 FEET, FOR AN ARC LENGTH OF 62.80 FEET TO A POINT.

THENCE PROCEED N17°32'04"E FOR A DISTANCE OF 53.69 FEET TO A POINT.

THENCE PROCEED N00°34'25"W FOR A DISTANCE OF 57.57 FEET TO A POINT.

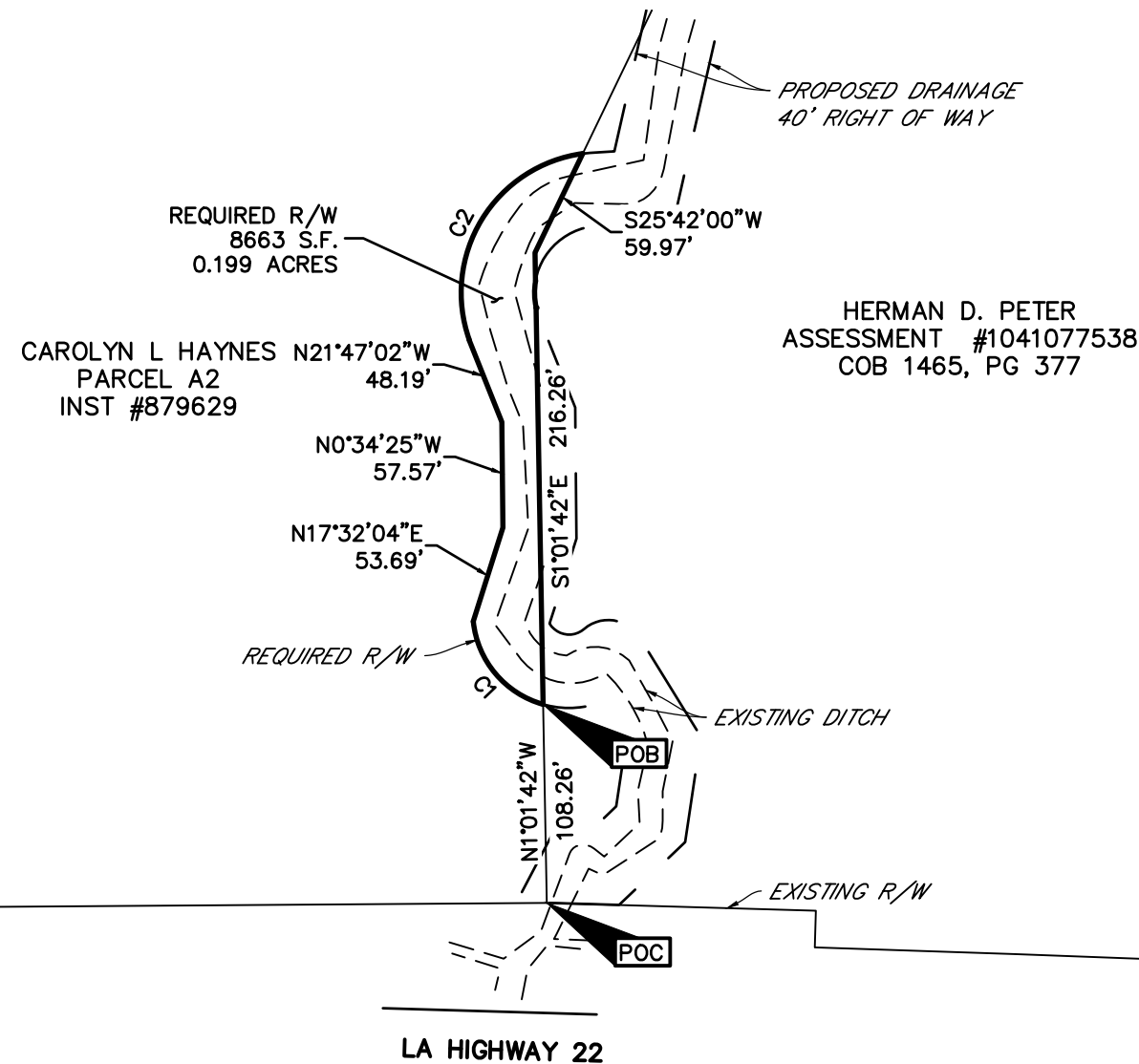
THENCE PROCEED N21°47'02"W FOR A DISTANCE OF 48.18 FEET TO A POINT.

THENCE PROCEED ALONG A CURVE TO THE RIGHT HAVING A RADIUS OF 76.65 FEET, A CHORD BEARING N31°22'46"E, A CHORD LENGTH OF 119.01 FEET, FOR AN ARC LENGTH OF 136.26 FEET TO A POINT.

THENCE PROCEED S25°42'00"W FOR A DISTANCE OF 59.97 FEET TO A POINT.

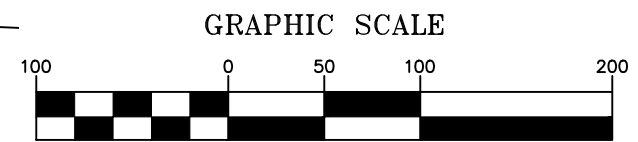
THENCE PROCEED S01°01'42"E FOR A DISTANCE OF 216.26 FEET BACK TO THE POINT OF BEGINNING.

THE ABOVE DESCRIBED PROPERTY CONTAINING 8662.56 SQUARE FEET OR 0.199 ACRES OF LAND, MORE OR LESS.



PARCEL NUMBER	RW-2
LOT NUMBER	A2
OWNER	CAROLYN L HAYNES
ACQUISITION	INST.# 879629
TAKING AREA	0.199 ACRES (8663 S.F.)
REMAINING AREA	19.763 AC. (860,894 S.F.)

GRID NORTH
NORTH REFERENCED TO
LOUISIANA STATE PLANE
COORDINATE SYSTEM
SOUTH ZONE, NAD 83



CURVE TABLE					
CURVE	LENGTH	RADIUS	DELTA ANGLE	CHORH BEARING	CHORD LENGTH
C1	62.80'	52.53'	68°30'21"	S40°06'53"E	59.13'
C2	136.26'	76.65'	101°51'26"	S31°22'46"W	119.01'

P:\10546 Raiford Oaks Right Of Way Takings Prev BFM #10124\DWG\10546 R1 Apw.dwg

SCALE: 1" = 100'	
DATE: JULY 14, 2022	
DRAWN: APW	CHECKED: GJL
CREW: -	
FILE No. 10546	PROJECT No. 10546
SHEET 3	OF 9

**PARCEL RW-2
& PROPOSED DRAINAGE RIGHT OF WAY
PARISH PROJECT NO. EN 1800023
HDCA PROJECT NO. 2019-08
ST. TAMMANY PARISH, LOUISIANA**

I certify that this plat represents an actual ground survey made by me or under my direction, and it does conform to the requirements for the Minimum Standards for Property Boundary Surveys as found in Louisiana Administrative Code TITLE 46: LXI, Chapter 29 for a Class D survey.

H. DAVIS COLE & ASSOCIATES, L.L.C.

BFM
CORPORATION LLC
A PROFESSIONAL LAND SURVEYING COMPANY

15 Veterans Memorial Boulevard
Kenner, Louisiana 70062
(504) 468-8800 Fax (504) 467-0065
www.bfmcorporation.com info@bfmcorporation.com

STATE OF LOUISIANA
11/7/2022
GARY J. LAMBERT, JR.
License No. 5259
PROFESSIONAL
LAND SURVEYOR
REGISTERED
PROFESSIONAL LAND SURVEYOR
GARY J. LAMBERT JR.
REGISTRATION NO. 5259

**GREENSBURG LAND DISTRICT
T-7-S, R-10-E, SECTION 17**

COMMENCING AT A POINT ON THE NORTH RIGHT OF WAY LINE OF LA HIGHWAY 22, AT THE COMMON CORNER OF CAROLYN L. HAYES PROPERTY AND HERMAN D. PETER PROPERTY, THENCE PROCEED N01°01'42"W FOR A DISTANCE OF 354.60 FEET TO A POINT, THENCE N25°42'00"E FOR A DISTANCE OF 133.72 FEET TO A POINT, THE POINT OF BEGINNING.

THENCE N12°47'07"E FOR A DISTANCE OF 159.83 FEET TO A POINT.

THENCE N76°06'54"E FOR A DISTANCE OF 83.61 FEET TO A POINT.

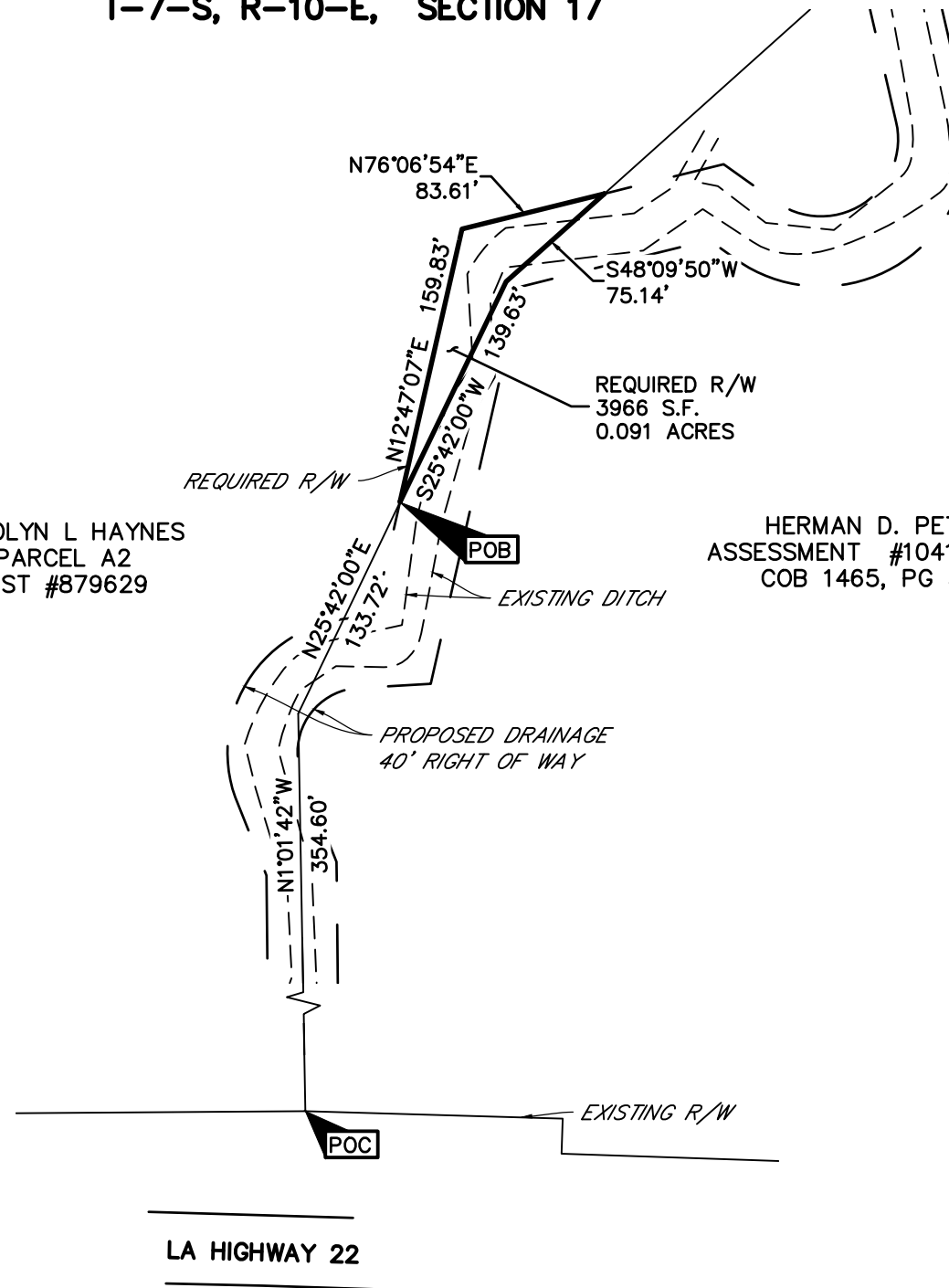
THENCE S48°09'50"W FOR A DISTANCE OF 75.14 FEET TO A POINT.

THENCE S25°42'00"W FOR A DISTANCE OF 139.63 FEET BACK TO THE POINT OF BEGINNING.

THE ABOVE DESCRIBED PROPERTY CONTAINING 3966.15 SQUARE FEET OR 0.091 ACRES OF LAND, MORE OR LESS.

CAROLYN L HAYNES
PARCEL A2
INST #879629

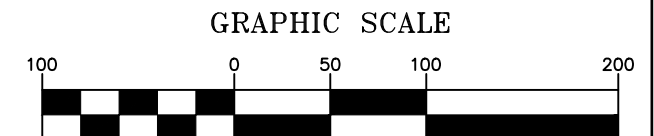
HERMAN D. PETER
ASSESSMENT #1041077538
COB 1465, PG 377



PARCEL NUMBER	RW-3
LOT NUMBER	A2
OWNER	CAROLYN L HAYNES
ACQUISITION	INST.# 879629
TAKING AREA	0.091 ACRES (3966 S.F.)
REMAINING AREA	19.763 AC. (860,894 S.F.)



GRID NORTH
NORTH REFERENCED TO
LOUISIANA STATE PLANE
COORDINATE SYSTEM
SOUTH ZONE, NAD 83



1 INCH = 100 US SURVEY FEET

P:\10546 Raiford Oaks Right Of Way Takings Prev BFM #10124\DWG\10546 R1 Apw.dwg

SCALE: 1" = 100'	
DATE: JULY 14, 2022	
DRAWN: APW	CHECKED: GJL
CREW: -	
FILE No. 10546	PROJECT No. 10546
SHEET 4	OF 9

**PARCEL RW-3
& PROPOSED DRAINAGE RIGHT OF WAY
PARISH PROJECT NO. EN 1800023
HDCA PROJECT NO. 2019-08
ST. TAMMANY PARISH, LOUISIANA**

I certify that this plat represents an actual ground survey made by me or under my direction, and it does conform to the requirements for the Minimum Standards for Property Boundary Surveys as found in Louisiana Administrative Code TITLE 46: LXI, Chapter 29 for a Class D survey.

H. DAVIS COLE & ASSOCIATES, L.L.C.



15 Veterans Memorial Boulevard
Kenner, Louisiana 70062
(504) 468-8800 Fax (504) 467-0065
www.bfmcorporation.com info@bfmcorporation.com

**GREENSBURG LAND DISTRICT
T-7-S, R-10-E, SECTION 17**

COMMENCING AT A POINT ON THE NORTH RIGHT OF WAY LINE OF LA HIGHWAY 22, AT THE COMMON CORNER OF CAROLYN L. HAYES PROPERTY AND HERMAN D. PETER PROPERTY, THENCE PROCEED N01°01'42"W FOR A DISTANCE OF 354.60 FEET TO A POINT, THENCE N25°42'00"E FOR A DISTANCE OF 273.35 FEET TO A POINT, THENCE N48°09'50"E FOR A DISTANCE OF 270.63 FEET TO A POINT, THE POINT OF BEGINNING.

THENCE N13°03'38"W FOR A DISTANCE OF 20.35 FEET TO A POINT.

THENCE ALONG A CURVE TO THE RIGHT HAVING A RADIUS OF 151.89 FEET, A CHORD BEARING N56°47'00"E, A CHORD LENGTH OF 124.77 FEET, AND AN ARC LENGTH OF 151.89 FEET TO A POINT.

THENCE N71°35'35"E FOR A DISTANCE OF 4.71 FEET TO A POINT.

THENCE S49°48'21"W FOR A DISTANCE OF 51.60 FEET TO A POINT.

THENCE ALONG A NON TANGENT CURVE TO THE LEFT, HAVING A RADIUS OF 38.79 FEET, A CHORD BEARING S51°26'00"W, A CHORD DISTANCE OF 36.36 FEET, AND AN ARC LENGTH OF 38.79 FEET TO A POINT.

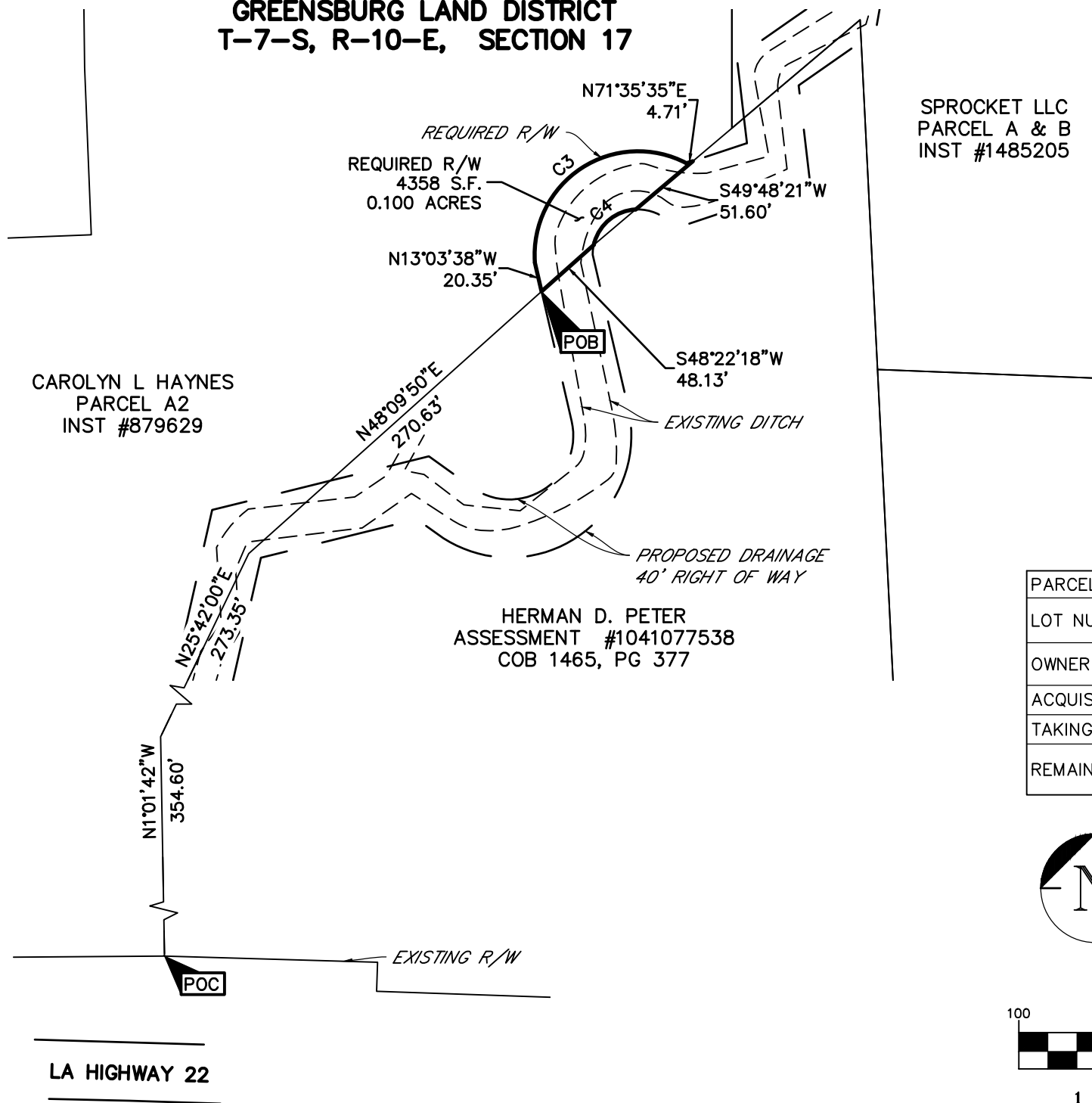
THENCE S48°22'18"W FOR A DISTANCE OF 48.13 FEET BACK TO THE POINT OF BEGINNING.

THE ABOVE DESCRIBED PROPERTY CONTAINING 4357.92 SQUARE FEET OR 0.100 ACRES OF LAND, MORE OR LESS.

CAROLYN L HAYNES
PARCEL A2
INST #879629

HERMAN D. PETER
ASSESSMENT #1041077538
COB 1465, PG 377

SPROCKET LLC
PARCEL A & B
INST #1485205

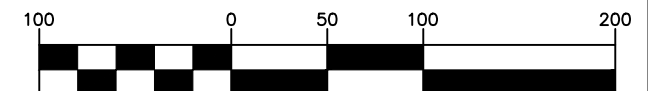


PARCEL NUMBER	RW-4
LOT NUMBER	A2
OWNER	CAROLYN L HAYNES
ACQUISITION	INST.# 879629
TAKING AREA	0.100 ACRES (4358 S.F.)
REMAINING AREA	19.763 AC. (860,894 S.F.)



GRID NORTH
NORTH REFERENCED TO
LOUISIANA STATE PLANE
COORDINATE SYSTEM
SOUTH ZONE, NAD 83

GRAPHIC SCALE



1 INCH = 100 US SURVEY FEET

CURVE TABLE

CURVE	LENGTH	RADIUS	DELTA ANGLE	CHORH BEARING	CHORD LENGTH
C3	151.89'	71.32'	122°02'00"	S56°47'00"W	124.77'
C4	38.79'	31.32'	70°58'04"	S51°26'00"W	36.36'

SCALE: 1" = 100'

DATE: JULY 14, 2022

DRAWN: APW CHECKED: GJL

CREW: -

FILE No. 10546 PROJECT No. 10546

SHEET 5 OF 9

**PARCEL RW-4
& PROPOSED DRAINAGE RIGHT OF WAY
PARISH PROJECT NO. EN 1800023
HDCA PROJECT NO. 2019-08
ST. TAMMANY PARISH, LOUISIANA**

I certify that this plat represents an actual ground survey made by me or under my direction, and it does conform to the requirements for the Minimum Standards for Property Boundary Surveys as found in Louisiana Administrative Code TITLE 46: LXI, Chapter 29 for a Class D survey.

H. DAVIS COLE & ASSOCIATES, L.L.C.

B F M
CORPORATION LLC
A PROFESSIONAL LAND SURVEYING COMPANY

15 Veterans Memorial Boulevard
Kenner, Louisiana 70062
(504) 468-8800 Fax (504) 467-0065
www.bfmcorporation.com info@bfmcorporation.com

STATE OF LOUISIANA
11/7/2022
GARY J. LAMBERT, JR.
License No. 5259
PROFESSIONAL
LAND SURVEYOR
REGISTERED
PROFESSIONAL LAND SURVEYOR
GARY J. LAMBERT JR.
REGISTRATION NO. 5259

**GREENSBURG LAND DISTRICT
T-7-S, R-10-E, SECTION 17**

CURVE TABLE

CURVE	LENGTH	RADIUS	DELTA ANGLE	CHORH BEARING	CHORD LENGTH
C5	28.43'	52.53'	31°00'25"	N89°52'16"W	28.08'
C6	21.74'	12.53'	99°26'19"	S81°14'45"E	19.11'
C7	34.65'	20.00'	99°16'20"	S81°19'45"E	30.48'

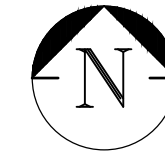
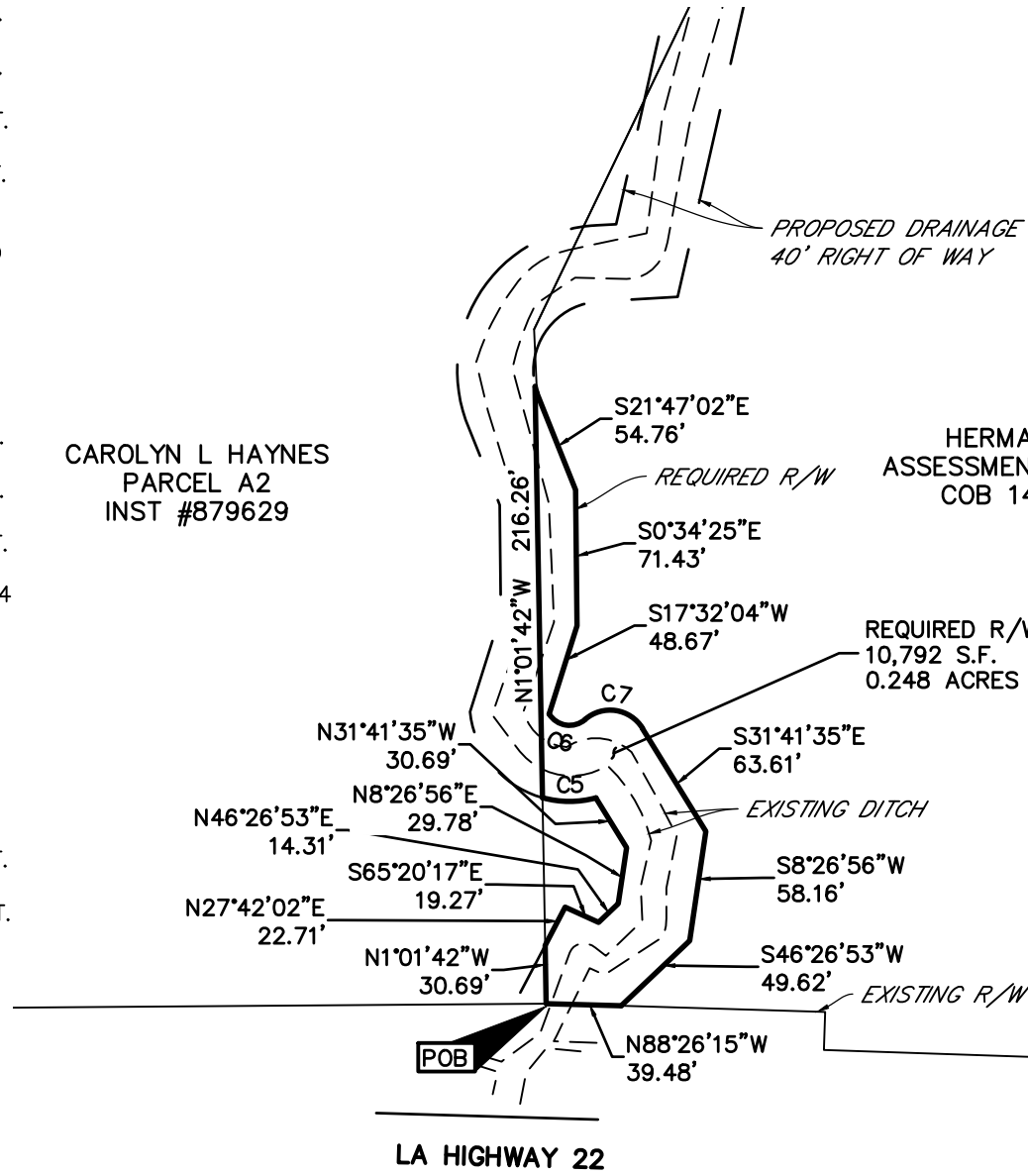
COMMENCING AT A POINT ON THE NORTH RIGHT OF WAY LINE OF LA HIGHWAY 22, AT THE COMMON CORNER OF CAROLYN L. HAYES PROPERTY AND HERMAN D. PETER PROPERTY, THE POINT OF BEGINNING.

THENCE N01°01'42"W FOR A DISTANCE OF 30.69 FEET TO A POINT.
 THENCE N27°42'02"E FOR A DISTANCE OF 22.71 FEET TO A POINT.
 THENCE N65°20'17"E FOR A DISTANCE OF 19.27 FEET TO A POINT.
 THENCE N46°26'53"E FOR A DISTANCE OF 14.31 FEET TO A POINT.
 THENCE N08°26'56"E FOR A DISTANCE OF 29.78 FEET TO A POINT.
 THENCE N31°41'35"W FOR A DISTANCE OF 30.69 FEET TO A POINT.
 THENCE ALONG A NON TANGENT CURVE TO THE RIGHT HAVING A RADIUS OF 52.53 FEET, A CHORD BEARING N89°52'16"W, A CHORD LENGTH OF 28.08 FEET, AND AN ARC LENGTH OF 28.43 FEET TO A POINT.
 THENCE N01°01'42"W FOR A DISTANCE OF 216.26 FEET TO A POINT.
 THENCE S21°47'02"E FOR A DISTANCE OF 54.76 FEET TO A POINT.
 THENCE S00°34'25"E FOR A DISTANCE OF 71.43 FEET TO A POINT.
 THENCE S17°32'04"W FOR A DISTANCE OF 48.67 FEET TO A POINT.
 THENCE ALONG A CURVE TO THE LEFT HAVING A RADIUS OF 21.74 FEET, A CHORD BEARING S81°14'45"E, A CHORD LENGTH OF 19.11 FEET, AND AN ARC LENGTH OF 21.74 FEET TO A POINT.
 THENCE ALONG A CURVE TO THE RIGHT HAVING A RADIUS OF 20.00 FEET, A CHORD BEARING S81°19'45"E, A CHORD LENGTH OF 30.48 FEET, AND AN ARC LENGTH OF 34.65 FEET TO A POINT.
 THENCE S31°41'35"E FOR A DISTANCE OF 63.61 FEET TO A POINT.
 THENCE S08°26'56"W FOR A DISTANCE OF 58.16 FEET TO A POINT.
 THENCE S46°26'53"W FOR A DISTANCE OF 49.62 FEET TO A POINT.
 THENCE N88°26'15"W FOR A DISTANCE OF 39.48 FEET BACK TO THE POINT OF BEGINNING.
 THE ABOVE DESCRIBED PROPERTY CONTAINING 10,792.30 SQUARE FEET OR 0.248 ACRES OF LAND, MORE OR LESS.

CAROLYN L HAYNES
PARCEL A2
INST #879629

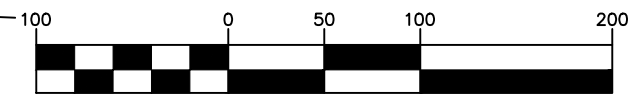
HERMAN D. PETER
ASSESSMENT #1041077538
COB 1465, PG 377

PARCEL NUMBER	RW-5
LOT NUMBER	UNDESIGNATED
OWNER	HERMAN D PETER
ACQUISITION	COB 1465, PG 377
TAKING AREA	0.248 ACRES (10,792 S.F.)
REMAINING AREA	8.820 AC. (384,221 S.F.)



GRID NORTH
NORTH REFERENCED TO
LOUISIANA STATE PLANE
COORDINATE SYSTEM
SOUTH ZONE, NAD 83

GRAPHIC SCALE



1 INCH = 100 US SURVEY FEET

P:\10546 Raiford Oaks Right Of Way Takings Prev BFM #10124\DWG\10546 R1 Apw.dwg

SCALE: 1" = 100'	
DATE: JULY 14, 2022	
DRAWN: APW	CHECKED: GJL
CREW: -	
FILE No. 10546	PROJECT No. 10546
SHEET 6	OF 9

**PARCEL RW-5
& PROPOSED DRAINAGE RIGHT OF WAY
PARISH PROJECT NO. EN 1800023
HDCA PROJECT NO. 2019-08
ST. TAMMANY PARISH, LOUISIANA**

I certify that this plat represents an actual ground survey made by me or under my direction, and it does conform to the requirements for the Minimum Standards for Property Boundary Surveys as found in Louisiana Administrative Code TITLE 46: LXI, Chapter 29 for a Class D survey.

H. DAVIS COLE & ASSOCIATES, L.L.C.

BFM
CORPORATION LLC
A PROFESSIONAL LAND SURVEYING COMPANY

15 Veterans Memorial Boulevard
Kenner, Louisiana 70062
(504) 468-8800 Fax (504) 467-0065
www.bfmcorporation.com info@bfmcorporation.com

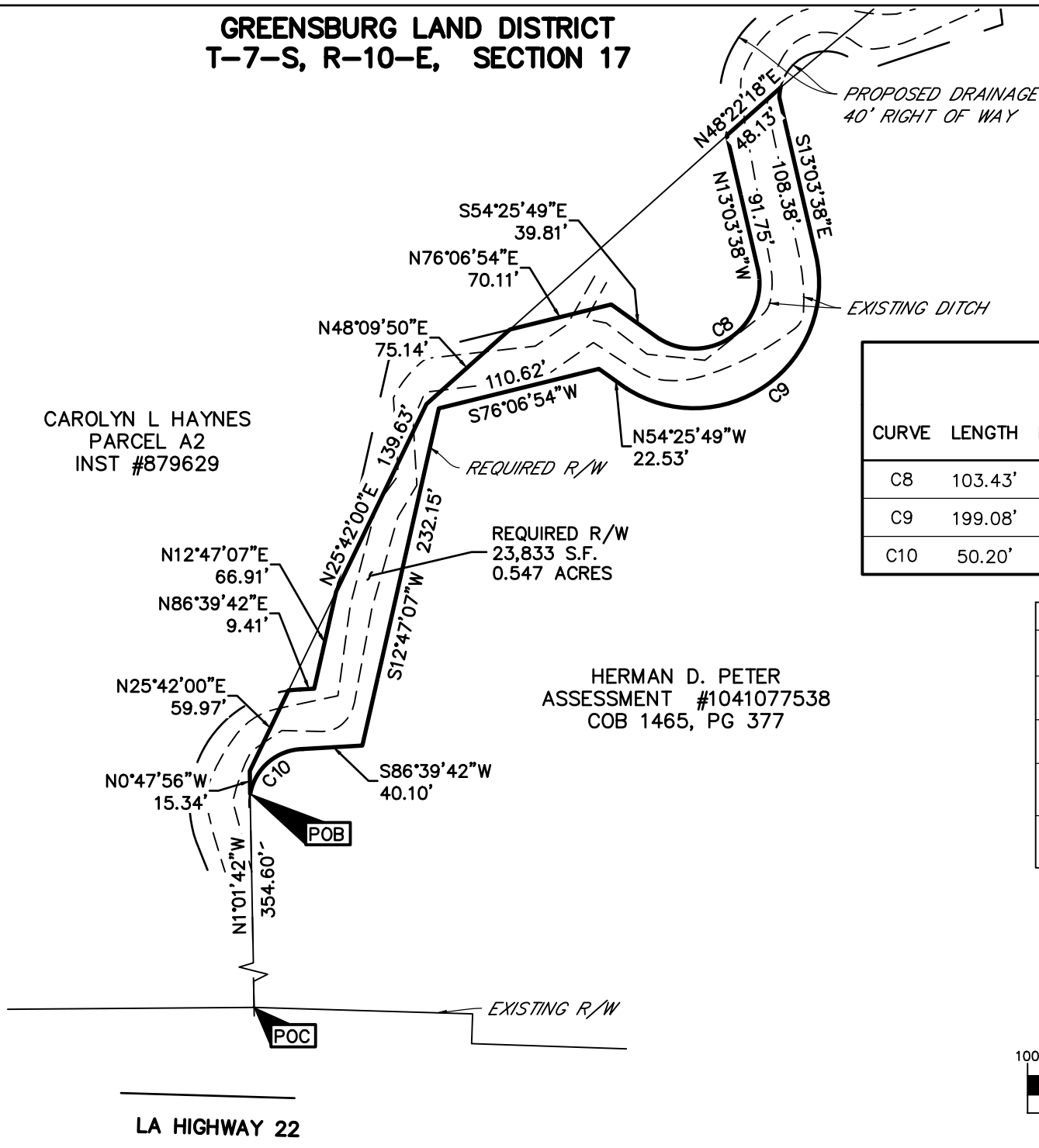
STATE OF LOUISIANA
11/7/2022
GARY J. LAMBERT, JR.
License No. 5259
PROFESSIONAL
LAND SURVEYOR
REGISTERED
PROFESSIONAL LAND SURVEYOR
GARY J. LAMBERT JR.
REGISTRATION NO. 5259

COMMENCING AT A POINT ON THE NORTH RIGHT OF WAY LINE OF LA HIGHWAY 22, AT THE COMMON CORNER OF CAROLYN L. HAYNES PROPERTY AND HERMAN D. PETER PROPERTY, THENCE PROCEED N01°01'42"W FOR A DISTANCE OF 354.60 FEET TO A POINT, THE POINT OF BEGINNING.

THENCE N00°47'56"W FOR A DISTANCE OF 15.34 FEET TO A POINT.
 THENCE N25°42'00"E FOR A DISTANCE OF 59.97 FEET TO A POINT.
 THENCE N86°39'42"E FOR A DISTANCE OF 9.41 FEET TO A POINT.
 THENCE N12°47'07"E FOR A DISTANCE OF 66.91 FEET TO A POINT.
 THENCE N25°42'00"E FOR A DISTANCE OF 139.63 FEET TO A POINT.
 THENCE N48°09'50"E FOR A DISTANCE OF 75.14 FEET TO A POINT.
 THENCE N76°06'54"E FOR A DISTANCE OF 70.11 FEET TO A POINT.
 THENCE S54°25'49"E FOR A DISTANCE OF 39.81 FEET TO A POINT.
 THENCE ALONG A CURVE TO THE LEFT HAVING A RADIUS OF 43.97 FEET, A CHORD BEARING N54°19'17"E, A CHORD LENGTH OF 81.18 FEET, AND AN ARC LENGTH OF 103.43 FEET TO A POINT.
 THENCE N13°03'38"W FOR A DISTANCE OF 91.75 FEET TO A POINT.
 THENCE N48°22'18"E FOR A DISTANCE OF 48.13 FEET TO A POINT.
 THENCE S13°03'38"E FOR A DISTANCE OF 108.38 FEET TO A POINT.
 THENCE ALONG A CURVE TO THE RIGHT, HAVING A RADIUS OF 199.08 FEET, A CHORD BEARING S54°51'20"W, A CHORD DISTANCE OF 155.63 FEET, AND AN ARC LENGTH OF 199.08 FEET TO A POINT.
 THENCE N54°25'49"W FOR A DISTANCE OF 22.53 FEET TO A POINT.
 THENCE S76°06'54"W FOR A DISTANCE OF 110.62 FEET TO A POINT.
 THENCE S12°47'07"W FOR A DISTANCE OF 232.15 FEET TO A POINT.
 THENCE S86°39'42"W FOR A DISTANCE OF 40.10 FEET TO A POINT.
 THENCE ALONG A CURVE TO THE LEFT HAVING A RADIUS OF 36.65 FEET, A CHORD BEARING S49°34'24"W, A CHORD LENGTH OF 46.36 FEET, AND AN ARC LENGTH OF 50.20 FEET BACK TO THE POINT OF BEGINNING.

THE ABOVE DESCRIBED PROPERTY CONTAINING 23,832.89 SQUARE FEET OR 0.547 ACRES OF LAND, MORE OR LESS.

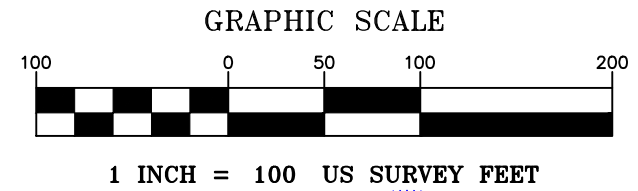
**GREENSBURG LAND DISTRICT
T-7-S, R-10-E, SECTION 17**



CURVE TABLE					
CURVE	LENGTH	RADIUS	DELTA ANGLE	CHORH BEARING	CHORD LENGTH
C8	103.43'	43.97'	134°45'40"	N54°19'17"E	81.18'
C9	199.08'	83.98'	135°49'49"	S54°51'20"W	155.63'
C10	50.20'	36.65'	78°28'36"	S49°34'24"W	46.36'

PARCEL NUMBER	RW-6
LOT NUMBER	UNDESIGNATED
OWNER	HERMAN D PETER
ACQUISITION	COB 1465, PG 377
TAKING AREA	0.547 ACRES (23,833 S.F.)
REMAINING AREA	8.820 AC. (384,221 S.F.)

GRID NORTH
 NORTH REFERENCED TO
 LOUISIANA STATE PLANE
 COORDINATE SYSTEM
 SOUTH ZONE, NAD 83



P:\10546 Raiford Oaks Right Of Way Takings Prev BFM #10124\DWG\10546 R1 Apw.dwg

SCALE: 1" = 100'	
DATE: JULY 14, 2022	
DRAWN: APW	CHECKED: GJL
CREW: -	
FILE No. 10546	PROJECT No. 10546
SHEET 7	OF 9

**PARCEL RW-6
& PROPOSED DRAINAGE RIGHT OF WAY
PARISH PROJECT NO. EN 1800023
HDCA PROJECT NO. 2019-08
ST. TAMMANY PARISH, LOUISIANA**

I certify that this plat represents an actual ground survey made by me or under my direction, and it does conform to the requirements for the Minimum Standards for Property Boundary Surveys as found in Louisiana Administrative Code TITLE 46: LXI, Chapter 29 for a Class D survey.

H. DAVIS COLE & ASSOCIATES, L.L.C.

BFM
CORPORATION LLC
A PROFESSIONAL LAND SURVEYING COMPANY

15 Veterans Memorial Boulevard
Kenner, Louisiana 70062
(504) 468-8800 Fax (504) 467-0065
www.bfmcorporation.com info@bfmcorporation.com

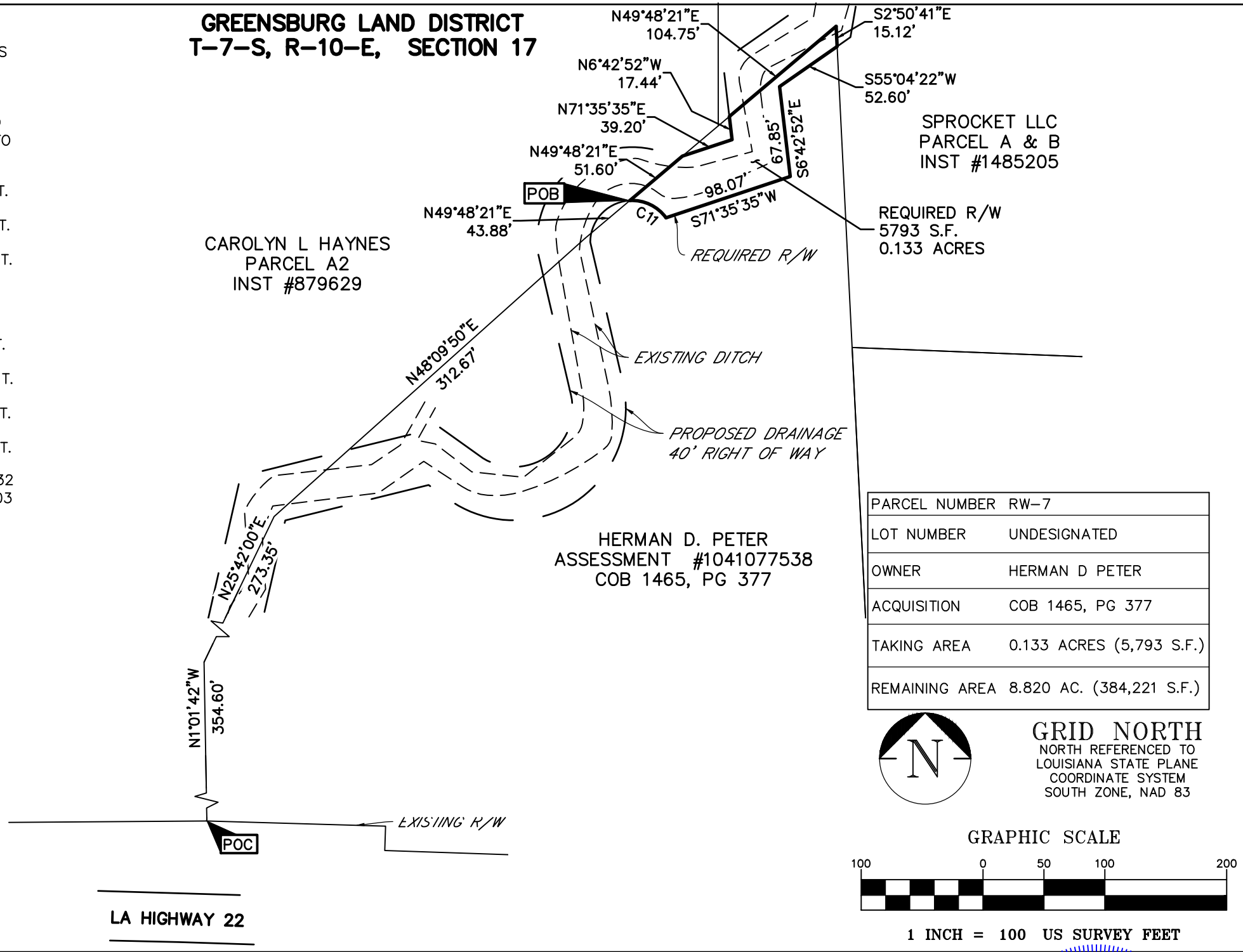
STATE OF LOUISIANA
11/7/2022
GARY J. LAMBERT, JR.
License No. 5259
PROFESSIONAL
LAND SURVEYOR
REGISTERED
PROFESSIONAL LAND SURVEYOR
GARY J. LAMBERT JR.
REGISTRATION NO. 5259

COMMENCING AT A POINT ON THE NORTH RIGHT OF WAY LINE OF LA HIGHWAY 22, AT THE COMMON CORNER OF CAROLYN L. HAYES PROPERTY AND HERMAN D. PETER PROPERTY, THENCE PROCEED N01°01'42"W FOR A DISTANCE OF 354.60 FEET TO A POINT, THENCE N25°42'00"E FOR A DISTANCE OF 273.35 FEET TO A POINT, THENCE N48°09'50"E FOR A DISTANCE OF 312.67 FEET TO A POINT, THENCE N49°48'21"E FOR A DISTANCE OF 43.88 FEET TO A POINT, THE POINT OF BEGINNING.

THENCE N49°48'21"E FOR A DISTANCE OF 51.60 FEET TO A POINT.
 THENCE N71°35'35"E FOR A DISTANCE OF 39.20 FEET TO A POINT.
 THENCE N06°42'52"W FOR A DISTANCE OF 17.44 FEET TO A POINT.
 THENCE N49°48'21"E FOR A DISTANCE OF 104.75 FEET TO A POINT.
 THENCE S02°50'41"E FOR A DISTANCE OF 15.12 FEET TO A POINT.
 THENCE S55°04'22"W FOR A DISTANCE OF 52.60 FEET TO A POINT.
 THENCE S06°42'52"E FOR A DISTANCE OF 67.85 FEET TO A POINT.
 THENCE S71°35'35"W FOR A DISTANCE OF 98.07 FEET TO A POINT.
 THENCE ALONG A CURVE TO THE LEFT HAVING A RADIUS OF 31.32 FEET, A CHORD BEARING N64°26'06"W, A CHORD LENGTH OF 30.03 FEET, AND AN ARC LENGTH OF 31.32 BACK TO THE POINT OF BEGINNING.

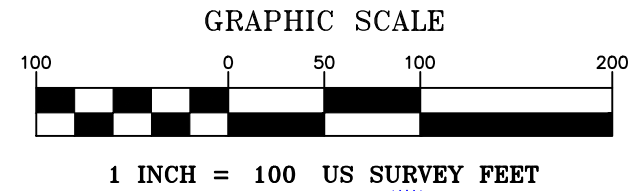
THE ABOVE DESCRIBED PROPERTY CONTAINING 5793.17 SQUARE FEET OR 0.133 ACRES OF LAND, MORE OR LESS.

**GREENSBURG LAND DISTRICT
T-7-S, R-10-E, SECTION 17**



PARCEL NUMBER	RW-7
LOT NUMBER	UNDESIGNATED
OWNER	HERMAN D PETER
ACQUISITION	COB 1465, PG 377
TAKING AREA	0.133 ACRES (5,793 S.F.)
REMAINING AREA	8.820 AC. (384,221 S.F.)

GRID NORTH
 NORTH REFERENCED TO
 LOUISIANA STATE PLANE
 COORDINATE SYSTEM
 SOUTH ZONE, NAD 83



CURVE	LENGTH	RADIUS	DELTA ANGLE	CHORH BEARING	CHORD LENGTH
C11	31.32'	31.32'	57°17'43"	N64°26'06"W	30.03'

P:\10546 Raiford Oaks Right Of Way Takings Prev BFM #10124\DWG\10546 R1 Apw.dwg

SCALE: 1" = 100'	
DATE: JULY 14, 2022	
DRAWN: APW	CHECKED: GJL
CREW: -	
FILE No. 10546	PROJECT No. 10546
SHEET 8	OF 9

**PARCEL RW-7
& PROPOSED DRAINAGE RIGHT OF WAY
PARISH PROJECT NO. EN 1800023
HDCA PROJECT NO. 2019-08
ST. TAMMANY PARISH, LOUISIANA**

I certify that this plat represents an actual ground survey made by me or under my direction, and it does conform to the requirements for the Minimum Standards for Property Boundary Surveys as found in Louisiana Administrative Code TITLE 46: LXI, Chapter 29 for a Class D survey.

H. DAVIS COLE & ASSOCIATES, L.L.C.

BFM
CORPORATION LLC
A PROFESSIONAL LAND SURVEYING COMPANY

15 Veterans Memorial Boulevard
Kenner, Louisiana 70062
(504) 468-8800 Fax (504) 467-0065
www.bfmcorporation.com info@bfmcorporation.com

STATE OF LOUISIANA
11/7/2022
GARY J. LAMBERT, JR.
License No. 5259
PROFESSIONAL
LAND SURVEYOR
REGISTERED
PROFESSIONAL LAND SURVEYOR
GARY J. LAMBERT JR.
REGISTRATION NO. 5259

**GREENSBURG LAND DISTRICT
T-7-S, R-10-E, SECTION 17**

COMMENCING AT A POINT ON THE NORTH RIGHT OF WAY LINE OF LA HIGHWAY 22, AT THE COMMON CORNER OF CAROLYN L. HAYES PROPERTY AND HERMAN D. PETER PROPERTY, THENCE PROCEED N01°01'42"W FOR A DISTANCE OF 354.60 FEET TO A POINT, THENCE N25°42'00"E FOR A DISTANCE OF 273.35 FEET TO A POINT, THENCE N48°09'50"E FOR A DISTANCE OF 312.67 FEET TO A POINT, THENCE N49°48'21"E FOR A DISTANCE OF 141.50 FEET TO A POINT, THE POINT OF BEGINNING.

THENCE N06°42'52"W FOR A DISTANCE OF 41.77 FEET TO A POINT.
 THENCE N55°04'22"E FOR A DISTANCE OF 71.97 FEET TO A POINT.
 THENCE N09°42'19"E FOR A DISTANCE OF 36.84 FEET TO A POINT.
 THENCE N57°13'58"E FOR A DISTANCE OF 122.38 FEET TO A POINT.
 THENCE ALONG A CURVE TO THE LEFT HAVING A RADIUS OF 145.55 FEET, A CHORD BEARING N79°02'57"E, A CHORD LENGTH OF 132.66 FEET, AND AN ARC LENGTH OF 137.75 TO A POINT.
 THENCE N27°16'25"E FOR A DISTANCE OF 149.18 FEET TO A POINT.
 THENCE N77°26'58"E FOR A DISTANCE OF 120.62 FEET TO A POINT.
 THENCE S00°01'54"W FOR A DISTANCE OF 40.98 FEET TO A POINT.
 THENCE S77°26'58"W FOR A DISTANCE OF 92.96 FEET TO A POINT.
 THENCE S27°16'25"W FOR A DISTANCE OF 138.64 FEET TO A POINT.
 THENCE ALONG A CURVE TO THE RIGHT HAVING A RADIUS OF 185.55 FEET, A CHORD BEARING S74°40'26"W, A CHORD LENGTH OF 160.31 FEET, AND AN ARC LENGTH OF 165.77 TO A POINT.
 THENCE S57°13'58"W FOR A DISTANCE OF 87.87 FEET TO A POINT.
 THENCE S09°42'19"W FOR A DISTANCE OF 35.95 FEET TO A POINT.
 THENCE S55°04'22"W FOR A DISTANCE OF 12.15 FEET TO A POINT.
 THENCE N02°50'41"W FOR A DISTANCE OF 15.12 FEET TO A POINT.
 THENCE S49°48'21"W FOR A DISTANCE OF 104.75 FEET TO A POINT.
 THE ABOVE DESCRIBED PROPERTY CONTAINING 24,613.67 SQUARE FEET OR 0.565 ACRES OF LAND, MORE OR LESS.

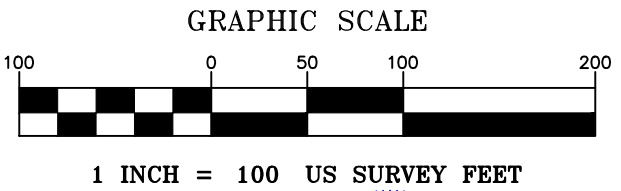
CAROLYN L HAYNES
PARCEL A2
INST #879629

HERMAN D. PETER
ASSESSMENT #1041077538
COB 1465, PG 377

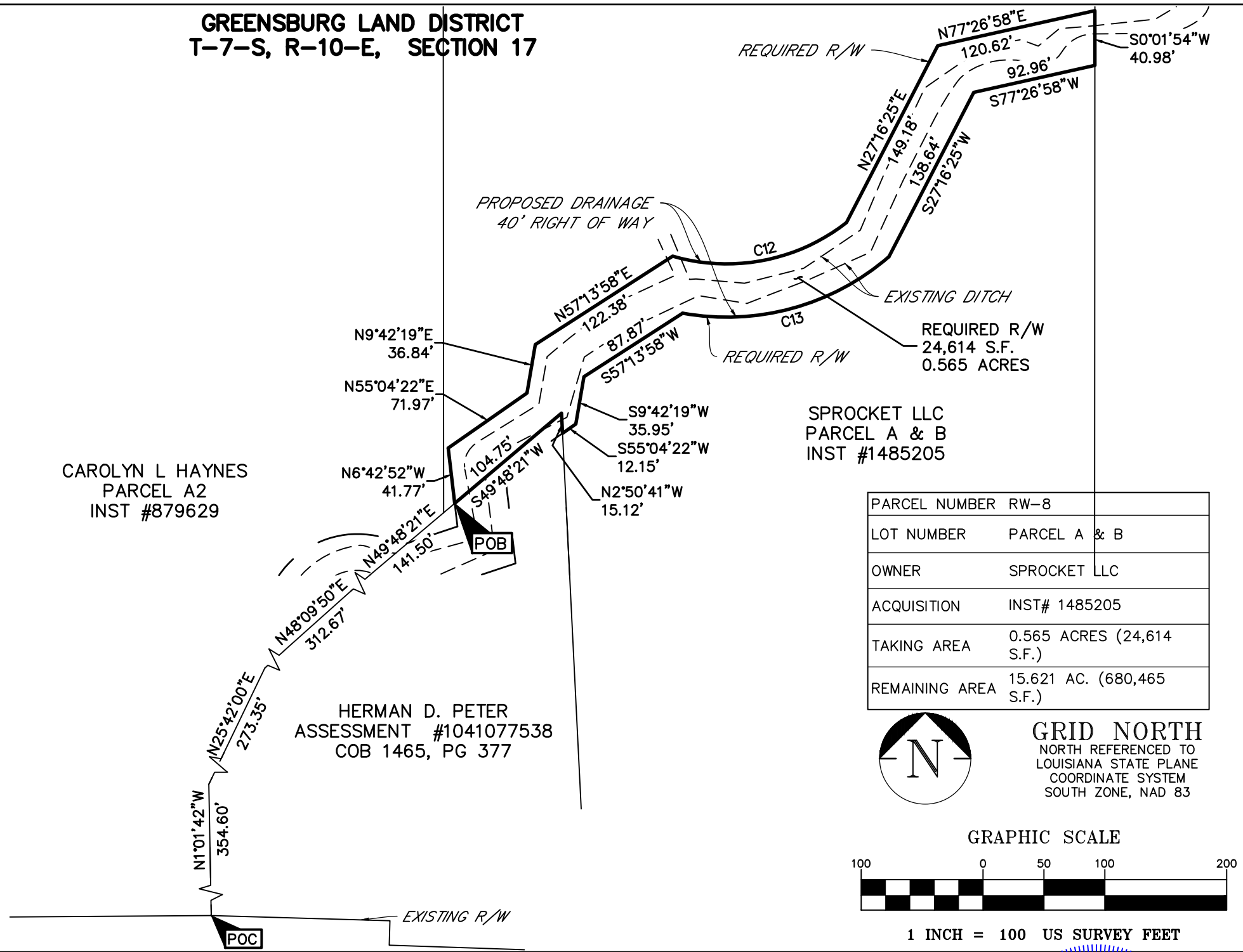
SPROCKET LLC
PARCEL A & B
INST #1485205

PARCEL NUMBER	RW-8
LOT NUMBER	PARCEL A & B
OWNER	SPROCKET LLC
ACQUISITION	INST# 1485205
TAKING AREA	0.565 ACRES (24,614 S.F.)
REMAINING AREA	15.621 AC. (680,465 S.F.)

GRID NORTH
NORTH REFERENCED TO
LOUISIANA STATE PLANE
COORDINATE SYSTEM
SOUTH ZONE, NAD 83



CURVE	LENGTH	RADIUS	DELTA ANGLE	CHORH BEARING	CHORD LENGTH
C12	137.75'	145.55'	54°13'32"	N79°02'57"E	132.66'
C13	165.77'	185.55'	51°11'16"	S74°40'26"W	160.31'



P:\10546 Raiford Oaks Right Of Way Takings Prev BFM #10124\DWG\10546 R1 Apw.dwg

SCALE: 1" = 100'	
DATE: JULY 14, 2022	
DRAWN: APW	CHECKED: GJL
CREW: —	
FILE No. 10546	PROJECT No. 10546
SHEET 9	OF 9

**PARCEL RW-8
& PROPOSED DRAINAGE RIGHT OF WAY
PARISH PROJECT NO. EN 1800023
HDCA PROJECT NO. 2019-08
ST. TAMMANY PARISH, LOUISIANA**

I certify that this plat represents an actual ground survey made by me or under my direction, and it does conform to the requirements for the Minimum Standards for Property Boundary Surveys as found in Louisiana Administrative Code TITLE 46: LXI, Chapter 29 for a Class D survey.

H. DAVIS COLE & ASSOCIATES, L.L.C.



15 Veterans Memorial Boulevard
Kenner, Louisiana 70062
(504) 468-8800 Fax (504) 467-0065
www.bfmcorporation.com info@bfmcorporation.com

STATE OF LOUISIANA
11/7/2022
GARY J. LAMBERT, JR.
License No. 5259
PROFESSIONAL
LAND SURVEYOR
REGISTERED
PROFESSIONAL LAND SURVEYOR
GARY J. LAMBERT JR.
REGISTRATION NO. 5259