

LEGAL DESCRIPTION OF OAK ALLEY MEADOWS SUBDIVISION

TRACT "A-1" OF THE SWEET FAMILY PROPERTY, A CERTAIN TRACT OF LAND DESIGNATED AS TRACT A-1 ON MAP TITLED "LOT LINE ADJUSTMENT TO AN EXISTING MINOR SUBDIVISION TRACT A & TRACT B"

QUARTER SECTION TIE

FROM THE SOUTHWEST PROPERTY CORNER LABELED HEREON AS "POINT OF BEGINNING" PROCEED S87°07'12"W A DISTANCE OF 880.74 FEET TO A POINT...

Table with columns: NUMBER, BEARING, LENGTH. Lists line data for the quarter section tie.

Table with columns: NUMBER, RADIUS, ARC LENGTH, CHORD DIRECTION, CHORD LENGTH. Lists curve data for the quarter section tie.

Table with columns: DEVELOPMENT NOTES, TYPICAL SECTION NOTES. Contains notes on road surface, drainage, and utility standards.

- 1. ROADWAY TESTING AND INSPECTION SHALL CONFORM TO SECTION 40-032.03 OF THE ST. TAMMANY PARISH ORDINANCES, LATEST REVISION.

LEGAL DESCRIPTION OF 15' SEWER SERVITUDE

TRACT "A-1" OF THE SWEET FAMILY PROPERTY, A CERTAIN TRACT OF LAND DESIGNATED AS TRACT A-1 ON MAP TITLED "LOT LINE ADJUSTMENT TO AN EXISTING MINOR SUBDIVISION TRACT A & TRACT B"

FROM THE "POINT OF BEGINNING" THENCE RUN SOUTH 67 DEGREES 25 MINUTES 50 SECONDS EAST FOR A DISTANCE OF 192.71 FEET TO A POINT...

LEGAL DESCRIPTION OF TRACT T.P.

TRACT "A-1" OF THE SWEET FAMILY PROPERTY, A CERTAIN TRACT OF LAND DESIGNATED AS TRACT A-1 ON MAP TITLED "LOT LINE ADJUSTMENT TO AN EXISTING MINOR SUBDIVISION TRACT A & TRACT B"

FROM THE "POINT OF BEGINNING" THENCE RUN SOUTH 22 DEGREES 34 MINUTES 11 SECONDS WEST FOR A DISTANCE OF 159.19 FEET TO A POINT...

LEGAL DESCRIPTION OF TEMPORARY 15' ACCESS SERVITUDE

TRACT "A-1" OF THE SWEET FAMILY PROPERTY, A CERTAIN TRACT OF LAND DESIGNATED AS TRACT A-1 ON MAP TITLED "LOT LINE ADJUSTMENT TO AN EXISTING MINOR SUBDIVISION TRACT A & TRACT B"

FROM THE POINT OF BEGINNING, THENCE RUN NORTH 67 DEGREES 25 MINUTES 50 SECONDS WEST FOR A DISTANCE OF 152.1 FEET TO A POINT...

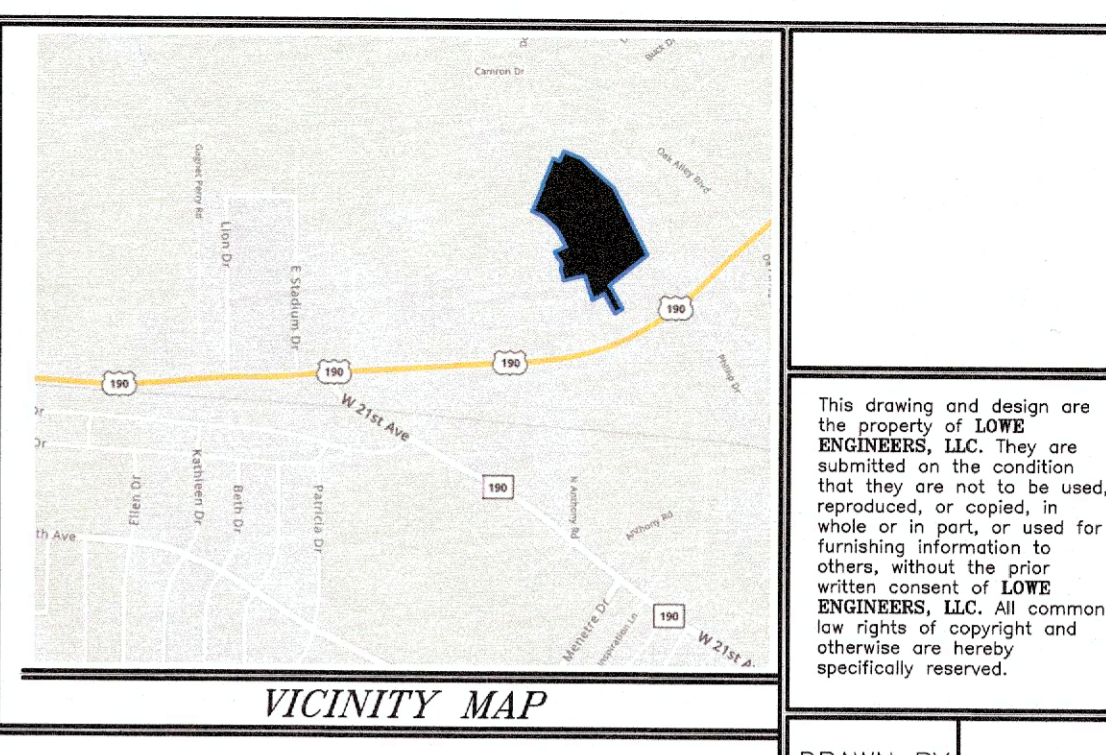
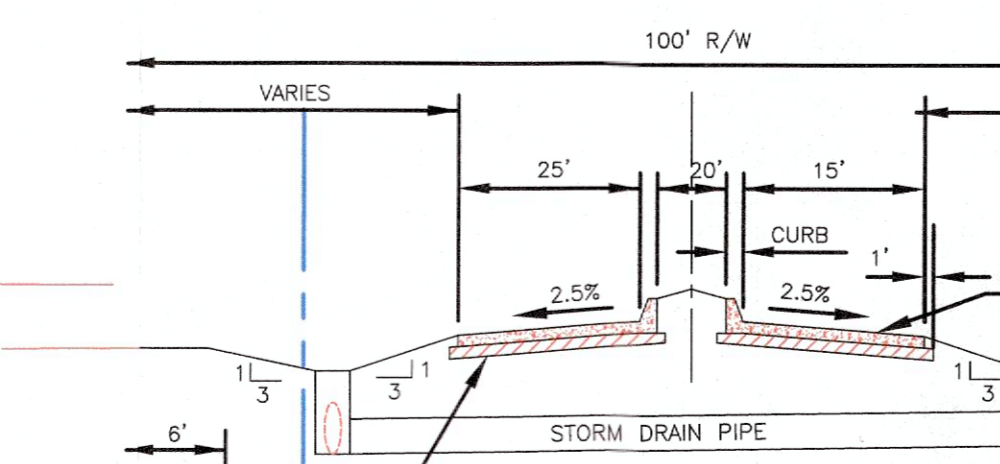
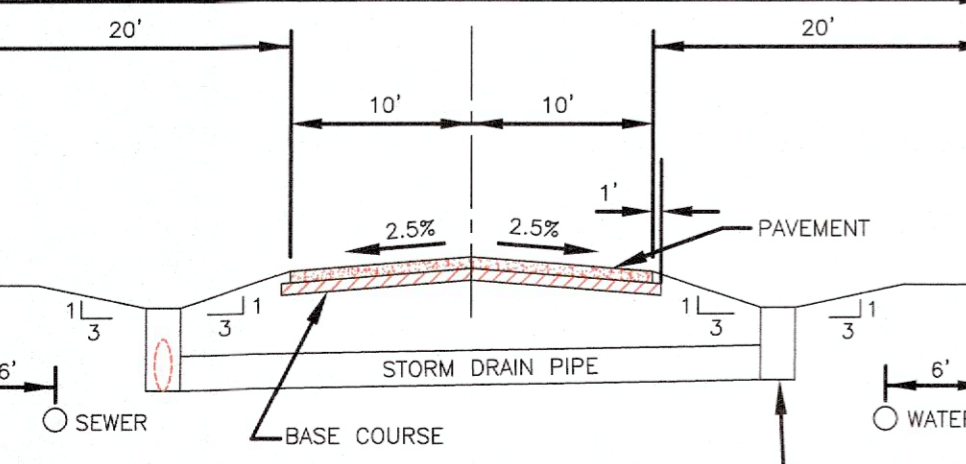


Table with columns: DRAWN BY, DATE, REVISION, CHECKED, SCALE, SURVEY #. Contains project metadata.

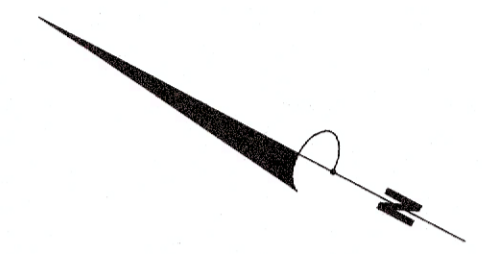
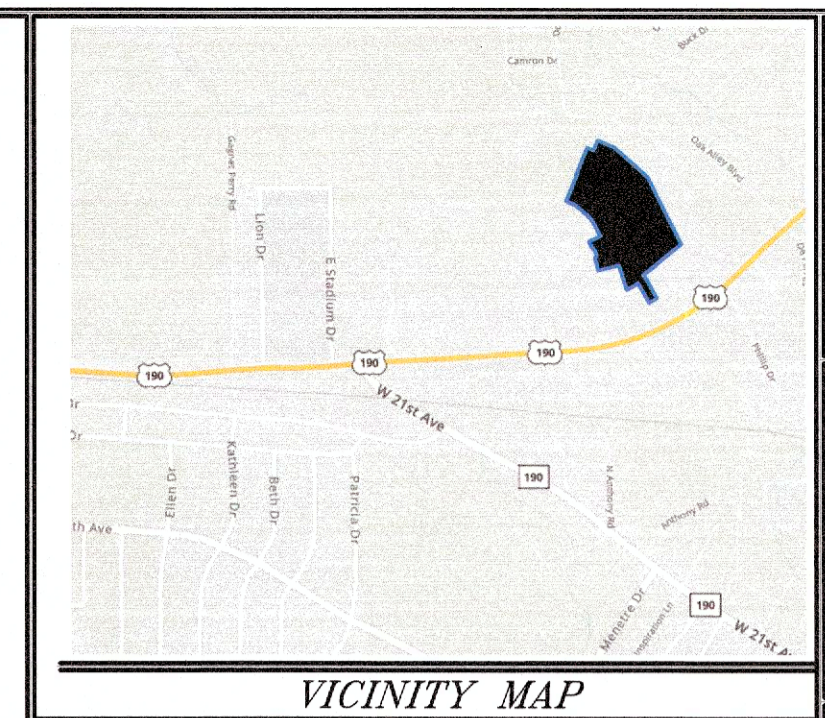
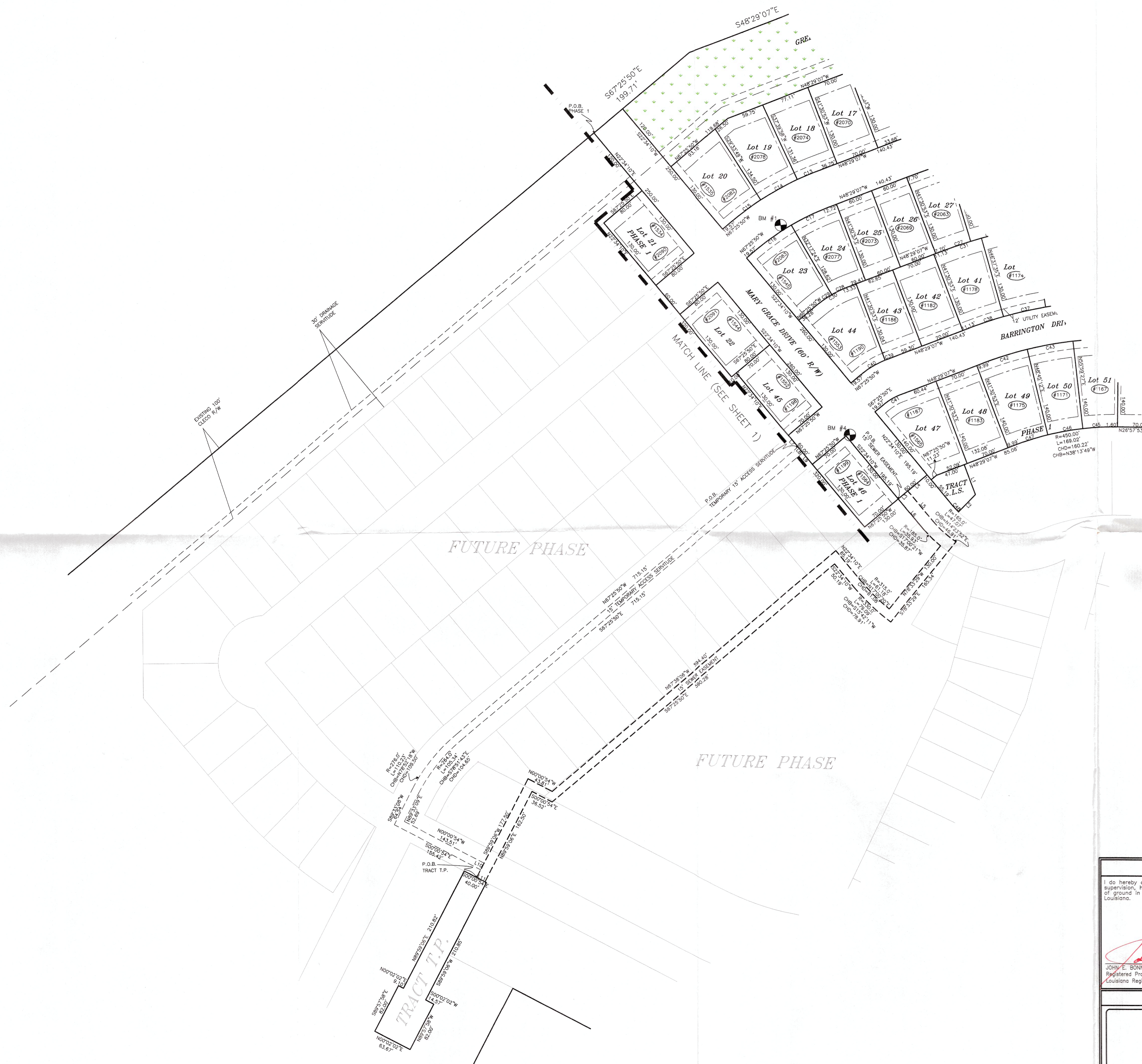
Table with columns: REFERENCE BENCHMARK, SIGNATURES. Lists benchmarks and signatures of project participants.

RESTRICTIVE COVENANTS. NO CERTIFICATE OF OCCUPANCY SHALL BE ISSUED BEFORE THE SEWERAGE AND WATER SYSTEMS ARE INSTALLED AND OPERABLE...

SURVEYOR'S CERTIFICATION. I do hereby certify that, as of the date hereon above, that I or others under my direct supervision, have made a careful survey of certain platometric features relating to a portion of ground in Sections 29 & 30, T-6-S, R-11-E, St. Tammany Parish, Louisiana.

LOWE ENGINEERS logo and contact information. Includes address, phone, and website details.

Vertical text on the right edge: OAK ALLEY MEADOWS, L.L.C. RECORDED PLAT. A FINAL SURVEY OF OAK ALLEY MEADOWS SUBDIVISION PHASE 1 SITUATED IN SECTIONS 29 & 30, T-6-S, R-11-E GREENSBURG LAND DISTRICT, ST. TAMMANY PARISH, LOUISIANA. SHEET NUMBER 1 OF 2.



This drawing and design are the property of LOWE ENGINEERS, L.L.C. They are submitted on the condition that they are not to be used, reproduced, or copied, in whole or in part, or used for furnishing information to others, without the prior written consent of LOWE ENGINEERS, L.L.C. All common law rights of copyright and otherwise are hereby specifically reserved.

DRAWN BY	SPH/DMC
DATE	6/23/21
REVISION	DATE
CHECKED	JEB
SCALE	1" = 80'
SURVEY #	21-140399

**SIGNATURES**

*[Signature]*  
 OAK ALLEY MEADOWS, L.L.C.  
 CHAIRMAN OF THE PLANNING COMMISSION

*[Signature]*  
 SECRETARY OF THE PLANNING COMMISSION

*[Signature]*  
 DIRECTOR, DEPARTMENT OF ENGINEERING

*[Signature]*  
 ST. TAMMANY PARISH CLERK OF COURT  
 Heather Tenorio, Deputy Clerk

02-25-22 DATE FILED  
 10094 FILING NUMBER

**SURVEYOR'S CERTIFICATION**

I do hereby certify that, as of the date hereon, I or others under my direct supervision, have made a careful survey of certain planimetric features relating to a portion of ground in Sections 29 & 38, Township 6 South, Range 11 East, Tangipahoa Parish, Louisiana.

*[Signature]*  
 JOHN E. BONNEAU  
 LICENSE NO. 4423  
 PROFESSIONAL LAND SURVEYOR  
 REGISTERED PROFESSIONAL LAND SURVEYOR  
 Louisiana Registration No. 4423

02/14/2022 DATE

**SURVEYOR'S INFORMATION**

**LOWE ENGINEERS**  
 Professional Land Surveyors - Planners - Consultants

1011 NORTH CAUSEWAY BLVD., SUITE 34, MANDEVILLE, LA 70471  
 (985) 845-1012 • (985) 845-1013 • FAX NO.: (985) 845-1778  
 www.lowengineers.com • e-mail: MandevilleTeam@lowengineers.com

RECORDED PLAT

Survey for: OAK ALLEY MEADOWS, L.L.C.

Property: A FINAL SURVEY OF OAK ALLEY MEADOWS SUBDIVISION PHASE 1 SITUATED IN SECTIONS 29 & 38, T-6-S, R-11-E GREENSBURG LAND DISTRICT, ST. TAMMANY PARISH, LOUISIANA

SHEET NUMBER  
 2 OF 2