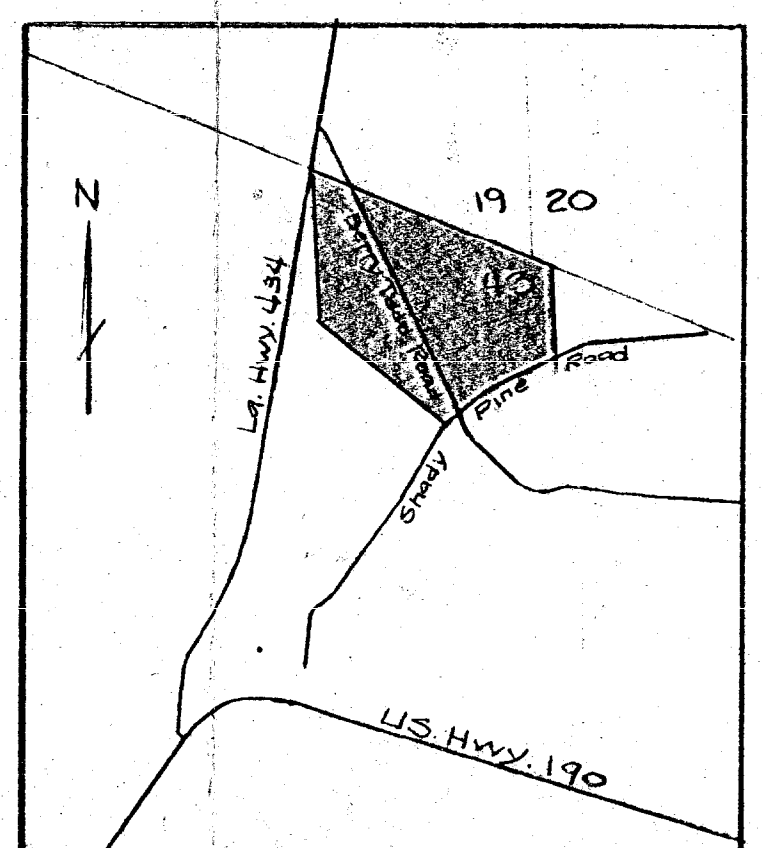
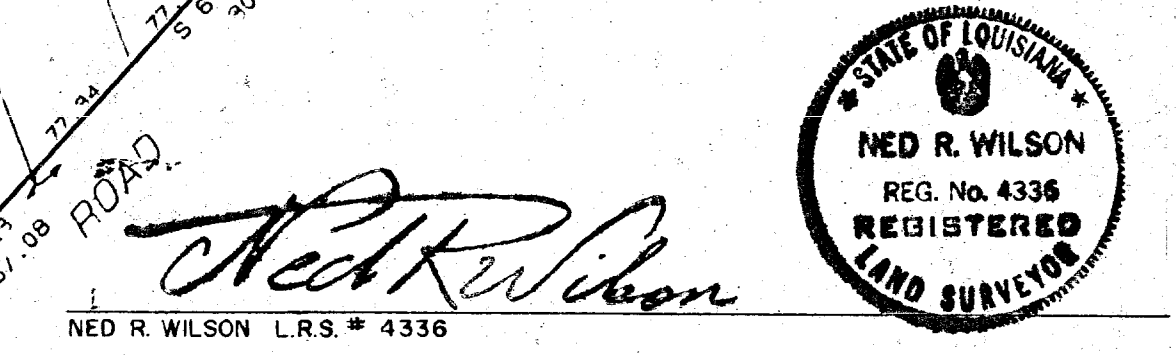


LINE	BEARING	DISTANCE
1	S 69°28'10"E	64.08
2	S 61°52'13"W	67.00
3	S 63°26'34"W	67.00
4	N 00°00'06"W	60.00
5	N 00°00'00"W	60.00
6	S 25°59'00"E	26.97
7	S 03°00'00"W	23.94
8	S 90°00'00"E	138.80
9	N 90°00'00"E	50.00
10	S 90°00'00"E	88.80
11	N 90°00'00"E	140.00
12	N 90°00'00"E	3.72
13	S 24°20'31"E	5.57
14	N 90°00'00"E	30.89
15	S 24°23'31"E	5.37
16	N 90°00'00"W	130.39
17	N 00°00'03"W	57.17
18	S 35°49'23"W	22.51
19	S 00°00'00"E	20.00
20	S 35°45'23"W	22.51
21	S 23°45'02"E	21.85
22	S 23°45'02"E	12.47
23	S 18°22'52"W	7.55
24	S 70°23'56"E	60.01
25	S 18°22'52"W	32.87
26	S 01°00'00"W	25.54
27	N 24°02'04"W	16.98
28	S 00°00'00"E	22.17
29	N 89°58'22"W	124.81
30	S 89°48'25"W	125.19
31	N 89°59'02"W	24.91
32	S 89°49'25"W	25.19
33	N 89°48'25"E	91.20
34	N 89°48'25"E	37.68
35	N 89°59'40"W	129.14
36	N 89°59'40"W	29.14
37	N 89°59'22"W	20.86
38	S 69°42'42"E	24.71
39	N 00°02'00"W	36.23
40	S 00°02'23"E	13.39
41	S 00°06'23"E	20.00
42	N 00°00'00"W	20.00
43	S 89°59'49"E	69.00
44	S 89°59'49"E	69.00
45	S 89°59'49"E	69.00
46	S 00°02'00"E	50.00
47	S 89°59'49"E	129.15
48	S 63°13'00"W	13.99
49	N 23°49'02"W	9.48
50	N 89°48'25"E	16.25
51	S 00°12'43"W	32.81
52	S 04°46'13"W	17.25
53	S 63°10'00"W	13.99
54	S 63°10'00"W	13.99
55	S 03°02'00"W	130.90
56	S 21°04'01"W	21.15
57	S 03°02'00"W	2.12
58	N 21°05'01"E	16.89
59	N 21°05'01"E	22.95
60	N 89°45'00"E	16.25
61	S 21°08'23"W	10.29
62	S 23°45'02"E	7.03



Block#	Old Lot#	New Lot#
3	5	5-A & 5-B
7	13	13-A & 13-B
8	4, 8, 9, & 10	4-A, 8-A, 9-A, & 10-A
9	8 & 9	8-A, 9-A
9	10	10-A, 10-B, & 10-C
9	11, 12, 13, & 14	11-A, 11-B, 12-B, 13-A, 13-B, 14-A, & 14-B
9	15 thru 29	15-A thru 29-A
10	10 & 11	10-A, 10-B, 11-A, & 11-B
11	2 thru 8	2-A thru 8-A
11	9, 10, & 11	9-A, 9-B, 10-A, 10-B, 11-A, & 11-B
14	17 thru 21	17-A & 21-A



APPROVAL:

[Signature]
 PRESIDENT, S. TAMMANY PAR. POLICE JURY

[Signature]
 CHM. SECY. SURVEYSION REGULATORY COMMISSION

[Signature]
 PARISH ENGINEER, DEPT. OF PUBLIC WORKS

[Signature]
 CHM. SECY. S. TAMMANY PARISH PLANNING & ADVISORY BOARD

2-4-86 FILE NUMBER 906B

[Signature]
 S. TAMMANY PARISH CLERK OF COURT

NOTES:
 TOTAL AREA TO BE RE-SUBDIVIDED IS 11.7 ACRES

A RE-SUBDIVISION OF A PORTION OF TAMMANY FOREST
 LOCATED IN SECTION 43 T-8-S R-13-E

SCALE: 1 IN = 100 FT
 DATE: AUG 27, 1985
 REVISED:

NRW & ASSOCIATES INC.
 LAND SURVEYORS AND CIVIL ENGINEERS
 P. O. BOX 1287
 MANDEVILLE, LOUISIANA 70448

DRAWN BY: FLASH & KFD
 CHECKED BY:
 DRAWING NO.: TF RESUB
 PAGE OF

See Affidavit by Ned R. Wilson
 filed 2-5-1987 as instrument
 # 644995
 G. Walker H. Worley
 Deputy Clerk
 5-1-2002