



ST. TAMMANY PARISH

MICHAEL B. COOPER
PARISH PRESIDENT

Date: August 6, 2024

To: Joey Lobrano
Right Of Way Coordinator
Department of Public Works

From: Jacob Seal, E.I.
Project Engineer Intern

Council Ordinance Required:

Yes: ☒ x

No: ☐

Re: District 14
Signage Installation
Brookter St. R08V118
1- NO PARKING w/ Right Arrow sign (R7-1R)
1- NO PARKING sign (R8-3a)
1- NO PARKING w/ Left Arrow sign (R7-1L)

The Department of Engineering recommends the installation of the following signage to be installed in District 14. (See attachments for additional details)

As per MUTCD, when signs with arrows are used to indicate the restricted parking zones, the signs with the arrows should be set at an angle of not less than 30 degrees and not more than 45 degrees with the line of traffic flow in order to be visible to approaching traffic.

1. Install NO PARKING (Right Arrow) sign 25' from Heather Ln.
2. Install NO PARKING sign at fence/property line.
3. Install NO PARKING (Left Arrow) sign 25' from Dylan Dr.

Cc: Councilman Jimmy Strickland
Daniel Hill, P.E., Director of Engineering

APPROVED:

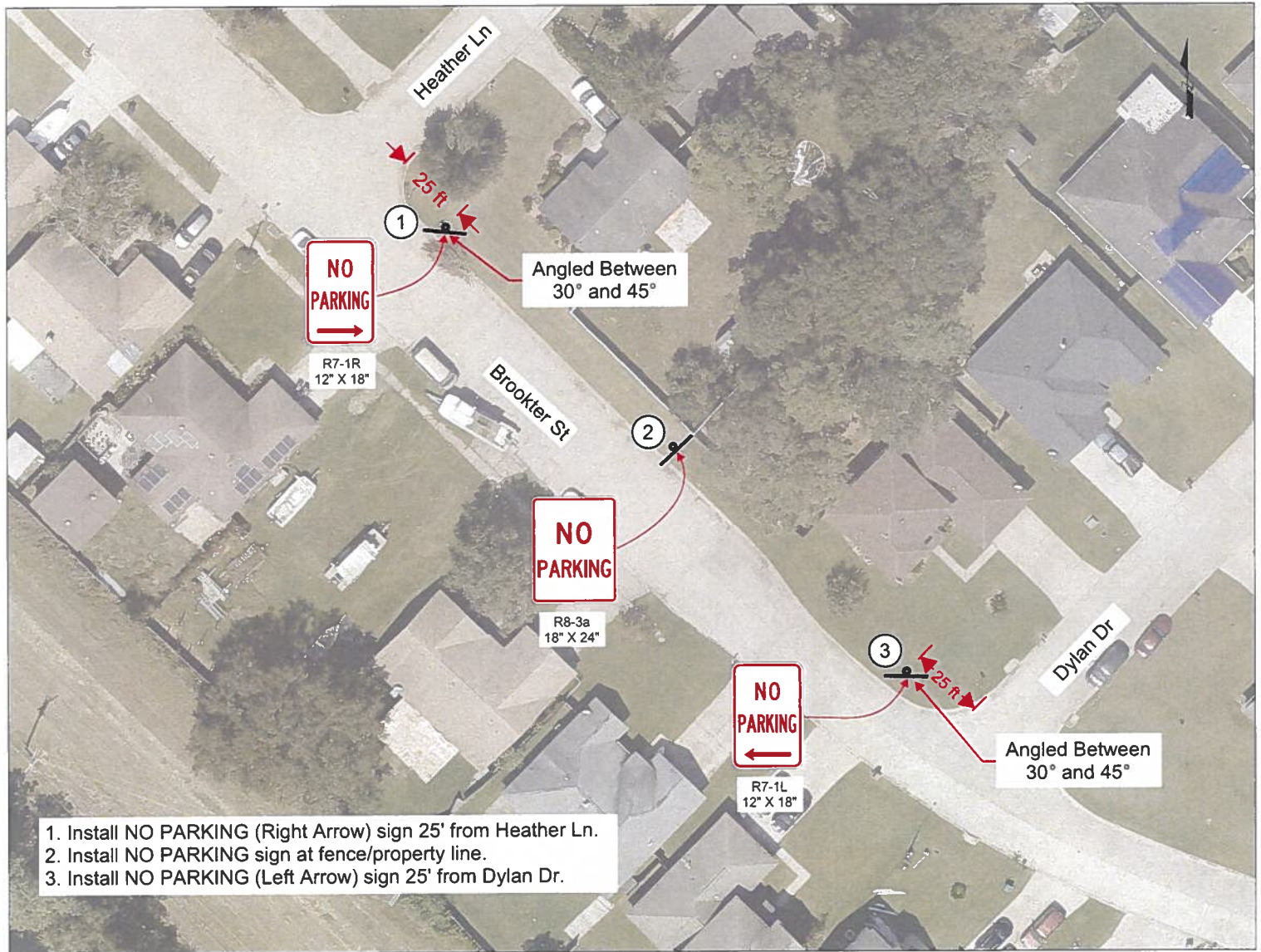
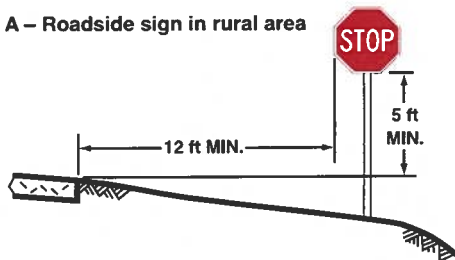
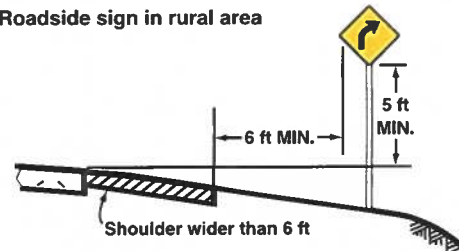
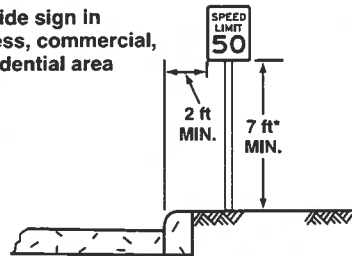
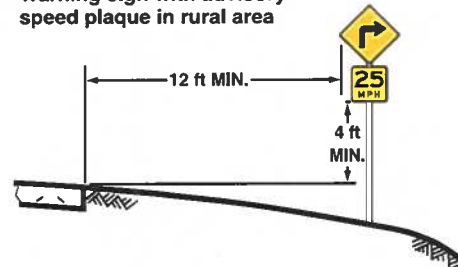
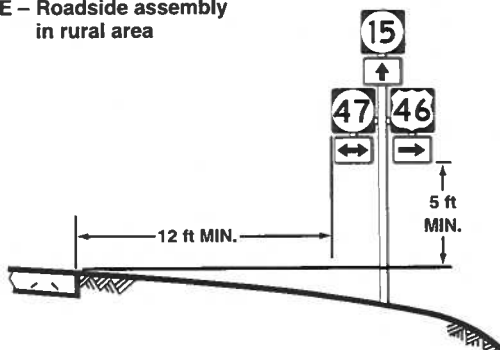
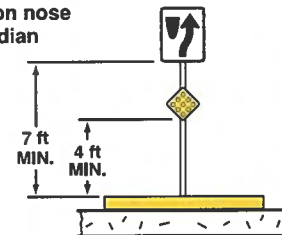
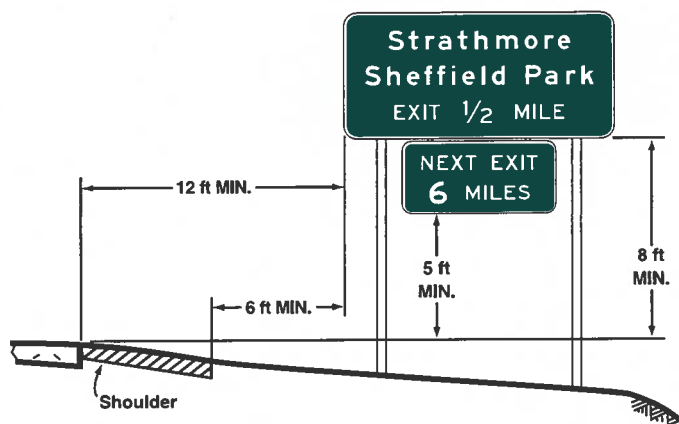
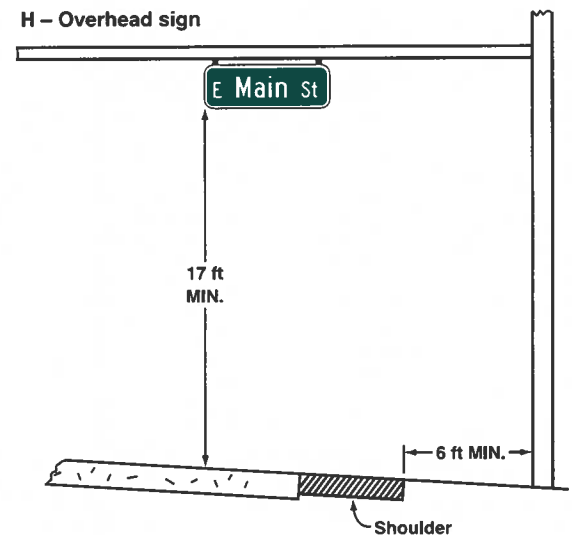
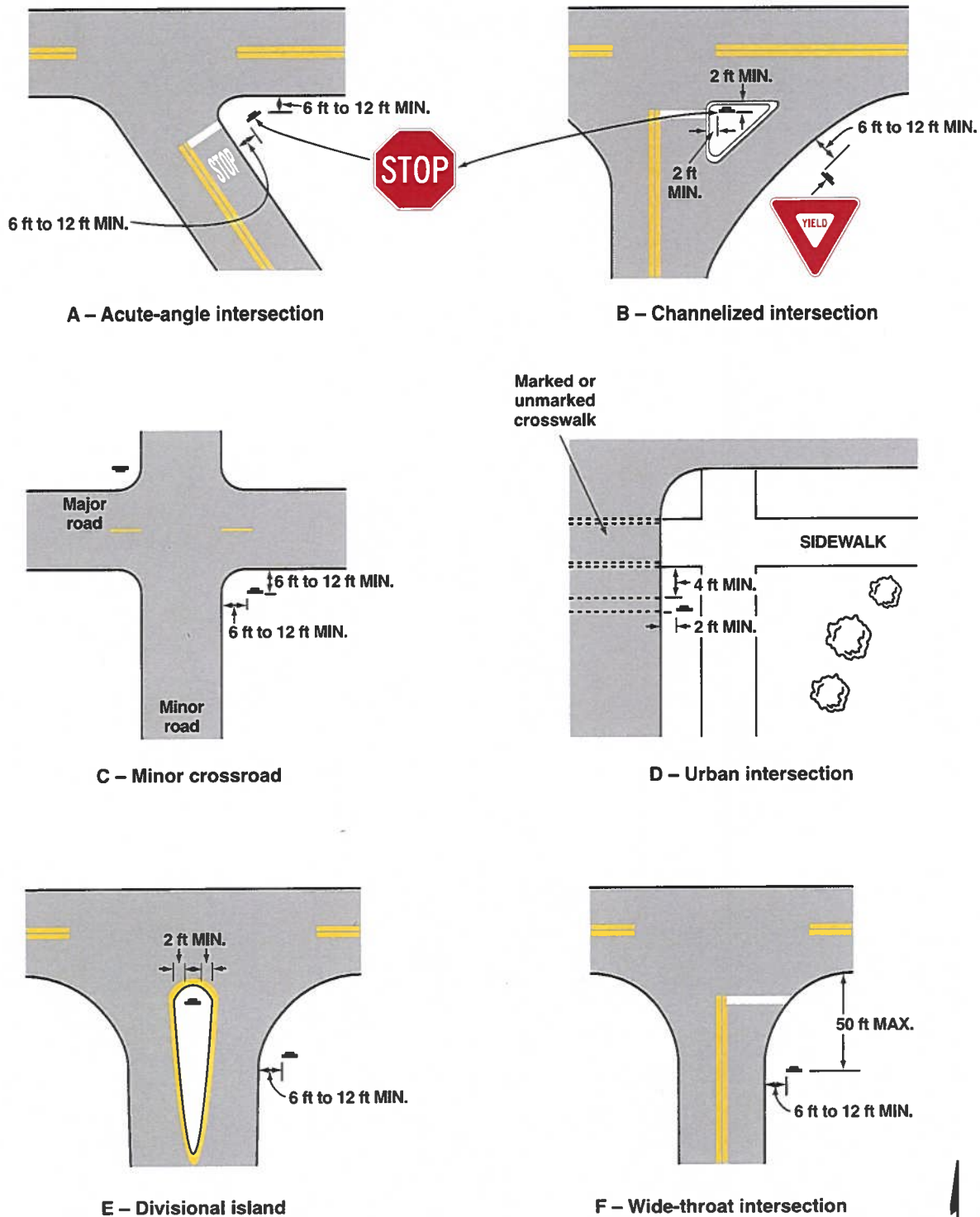


Figure 2A-2. Examples of Heights and Lateral Locations of Sign Installations**A – Roadside sign in rural area****B – Roadside sign in rural area****C – Roadside sign in business, commercial, or residential area**

*Where parking or pedestrian movements are likely to occur

D – Warning sign with advisory speed plaque in rural area**E – Roadside assembly in rural area****F – Sign on nose of median****G – Freeway or expressway sign with secondary sign****H – Overhead sign**

Note: See Section 2A.16 for reduced lateral offset distances that may be used in areas where lateral offsets are limited, and in business, commercial, or residential areas where sidewalk width is limited or where existing poles are close to the curb.

Figure 2A-3. Examples of Locations for Some Typical Signs at Intersections

Note: Lateral offset is a minimum of 6 feet measured from the edge of the shoulder, or 12 feet measured from the edge of the traveled way. See Section 2A.16 for lower minimums that may be used in urban areas, or where lateral offset space is limited.

