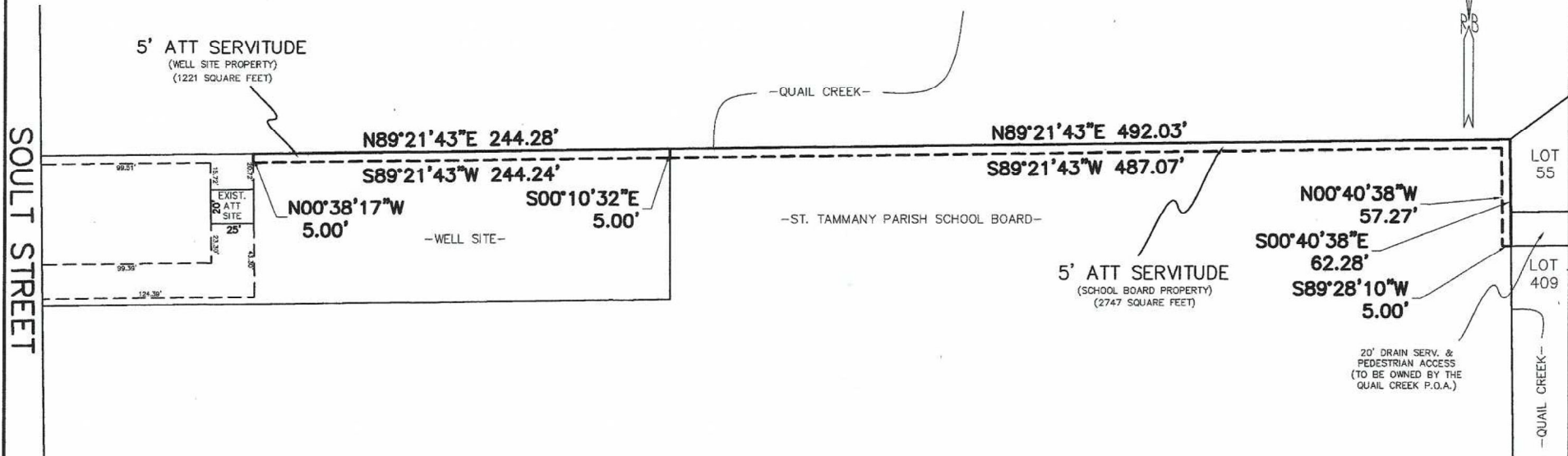


Survey of  
A 5' ATT SERVITUDE  
SITUATED IN SEC. 6, T-8-S, R-12-E  
ST. TAMMANY PARISH, LA



NOTES:  
-BEARINGS SHOWN HEREON ARE  
REFERENCED TO LOUISIANA STATE PLANE  
COORDINATES, LA SOUTH ZONE 1702.  
-ALL IMPROVEMENTS AND UTILITIES NOT  
SHOWN HEREON

NO ATTEMPT HAS BEEN MADE BY RANDALL W. BROWN & ASSOC., INC. TO VERIFY TITLE, ACTUAL LEGAL OWNERSHIP, SERVITUDES, EASEMENTS, SUBSURFACE UTILITIES, RIGHTS OF WAY, DEED RESTRICTIONS, WETLANDS OR ENVIRONMENTAL ISSUES OR OTHER ENCUMBRANCES ON THIS PROPERTY OTHER THAN THOSE FURNISHED BY THE CLIENT.

SURVEYED IN ACCORDANCE WITH THE LOUISIANA "APPLICABLE STANDARDS FOR PROPERTY BOUNDARY SURVEYS" FOR A CLASS C SURVEY.

**DRAFT**

**Randall W. Brown  
& Associates, Inc.**  
Professional Land Surveyors

Randall W. Brown, P.L.S.  
Professional Land Surveyor  
LA Registration No. 04586

228 W. Causeway Approach, Mandeville, LA 70448  
(985) 624-5368 FAX (985) 624-5309  
info@brownssurveys.com

Date: JULY 3, 2024  
Survey No. 24329  
Project No. A24329

Scale: 1" = 60' ±  
Drawn By: RJB  
Revised: