

EXHIBIT "A"

2022-2902-ZC

THOSE CERTAIN LOTS OF GROUND, together with all the buildings and improvements thereon, and all the rights, ways, means, privileges, servitudes, appurtenances and advantages thereunto belonging or in anywise appertaining, situated in the Parish of St. Tammany, State of Louisiana, in that part thereof known as WILSONVILLE SUBDIVISION. Said subdivision being partly located in Sec. 24, T6S, R1 IE, and partly in Sec. 19 T6S, R12E, all as per plan of Wilsonville Subdivision by Sidney G. d'la Sale, Civil Engineer, dated April 30, 1897, filed for record in the office of the Clerk of Court. Said lots are more particularly described as follows:

LOTS 3, 4, 29, and 30, SQUARE 116, AND LOTS 15, 16, 17, and 18, SQUARE 117, WILSONVILLE SUBDIVISION, ST. TAMMANY PARISH, STATE OF LOUISIANA.

Said parcel contains approximately 0.46 acres

Case No.: 2022-2902-ZC

PETITIONER: Jeff Schoen

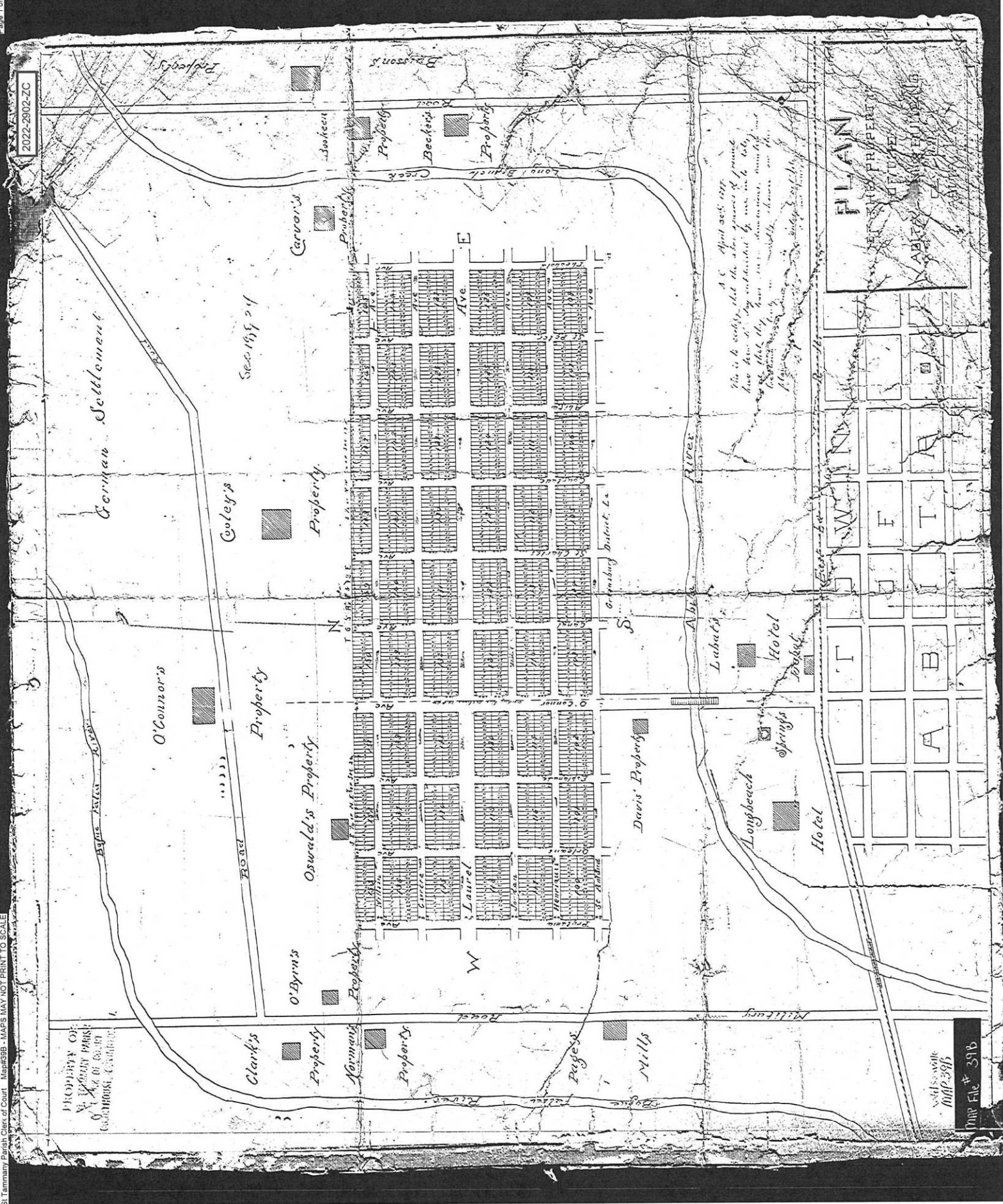
OWNER: H&S HOLDINGS, LLC

REQUESTED CHANGE: A-1A Suburban District to A-1A Suburban District and MHO Manufactured Housing Overlay

LOCATION: Parcel located at the end of Henriques Road, west of Highway 59; Covington; S24, T6S, R11E; Ward 3, District 2

SIZE: .46 acres





2022-2902-ZC

A-1A

OSWALD RD

T6 - R11E 24
A-1A

A-1A

HENRIQUES ST

T6 - R12E
19 MHO
A-2

STAMAND ST

RANGE LINE RD

