



STATE OF LOUISIANA PARISH OF ST. TAMMANY RIGHT OF WAY PROPERTY MAP OF PROPOSED ROADWAY/BRIDGE IMPROVEMENTS

PARISH PROJECT NO. EN22000181

ROUSSEAU RD. OVER SOAP & TALLOW BRANCH

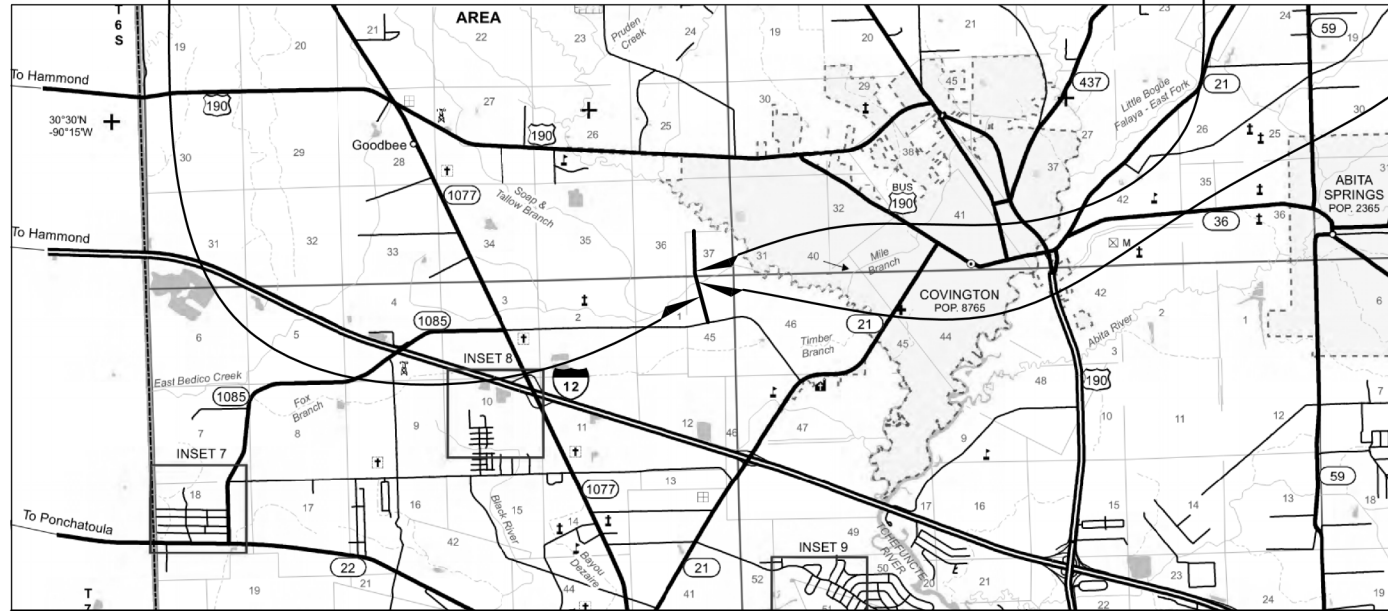
ST. TAMMANY PARISH

ROUSSEAU RD.

BEGIN PROJECT
C.S. 000-52
LOG MILE N/A
STA. 101+79.34

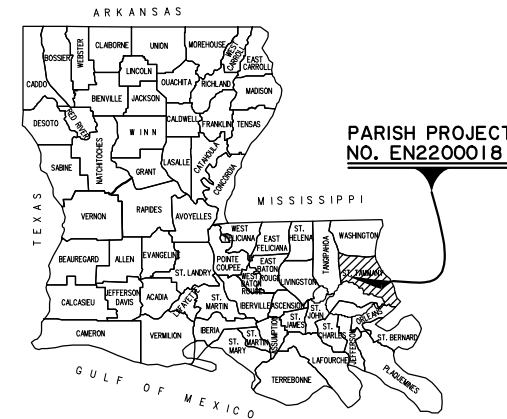
END PROJECT
C.S. 000-52
LOG MILE N/A
STA. 117+72.43

BRIDGE SITE: 140 FT.
STA. 107+84.73 TO
STA. 109+24.73
SOAP & TALLOW BRANCH



LAYOUT MAP

SCALE: 1 INCH = 1 MILE



VICINITY MAP

LOCATION OF WORK

CONTROL SECTION	LOG MILE	
	BEGIN	END
000-52	N/A	N/A

SHEET NUMBER	19
PARISH	ST. TAMMANY
CONTROL SECTION	000-52
PARISH PROJECT	EN22000181
COMPUTED	KGJ
CHECKED	MJL
DATE	11/10/2023
SCALE	1"=50'

STATE OF LOUISIANA
MATTHEW J. LEDET
License No. 5104
PROFESSIONAL ENGINEER
6/29/24

RIGHT OF WAY MAP
PARISH PROJECT NO. EN22000181
ROUSSEAU RD. OVER SOAP & TALLOW BRANCH
ST. TAMMANY PARISH

DATE	REVISION DESCRIPTION
06/20/24	REVISE PARCELS 1-5 & 2-1 TAKING LINES
06/20/24	REVISE CENTERLINE GEOMETRY
12/01/23	REVISE PARCEL 1-2 TAKING LINES

GREENSBURG LAND DISTRICT SECTION 37, T6S - RIOE SECTION 45, T7S - RIOE

NOTES:
 1. ALL PIPES AND MONUMENTS SHOWN HEREON WERE FOUND.
 2. THE COORDINATES AND BEARINGS SHOWN HEREON ARE BASED ON LOUISIANA STATE PLANE COORDINATE SYSTEM, SOUTH ZONE (NAD 83 (2011) EPOCH 2010.00) TO CONVERT FROM GRID BEARINGS TO TRUE BEARINGS USE: 00°35'33.5"

BASE STATIONS:

DN8737, MSIN INFINITY CENTER CORP ARP LAT=N30°18'42.20549" LONG=W89°36'15.50691" Y=296021.68 X=740968.87	AJ7833, HAMM HAMMOND CORP ARP LAT=N30°30'47.05152" LONG=W90°28'03.42835" Y=733115.66 X=3553447.24	DP7419, INRI LOYOLA UNIVERSITY CORP ARP LAT=N29°59'13.21142" LONG=W90°07'07.83732" Y=524621.45 X=3665493.65
---	--	--

3. DISTANCES SHOWN ARE HORIZONTAL GROUND DISTANCES. TO CONVERT DISTANCES DERIVED FROM COORDINATES SHOWN HEREON TO HORIZONTAL GROUND DISTANCES, USE SCALE FACTOR: 0.99995963

PARCEL CENTERLINE TIES

PARCEL	STATION	OFFSET
I-1	101+79.34	26.57'
I-2	102+91.95	35.33'
I-3	103+74.05	38.09'
I-4	103+81.49	21.65'
I-5	109+97.40	2.02'

ROUSSEAU GROUP, L.L.C.

PARCEL 2

BEGIN PROJECT
C.S. 000-52
LOG MILE N/A
STA. 101+79.34

☺ CURVE DATA

P.I. STA. 103+06.96
Y = 719185.5497
X = 3654330.1242
Δ = 02°26'12.9" LT.
D = 00°57'17.7"
T = 127.62'
L = 255.19'
R = 6000.00'

SEE INSET "A"

ROUSSEAU GROUP, L.L.C.

TERRA BELLA GROUP, L.L.C.

SEE INSET "B"

TERRA BELLA GROUP, L.L.C.

☺ CURVE DATA

P.I. STA. 106+47.37
Y = 719507.8039
X = 3654220.3137
Δ = 02°09'16.9" RT.
D = 00°57'17.7"
T = 112.83'
L = 225.64'
R = 6000.00'

LEGEND

- EXISTING R/W →
- EXISTING C. of A. →
- EXIST R/W & EXIST C. of A. →
- REQUIRED R/W →
- REQUIRED C. of A. →
- REQ'D R/W & REQ'D C. of A. →
- RIGHT OF WAY LINE
- CONTROL OF ACCESS
- RIGHT OF WAY & CONTROL OF ACCESS
- LIMITS OF CONSTRUCTION
- LOT LINE
- APPARENT PROPERTY LINE
- EXISTING SERVITUDE LINE
- SECTION LINE

PARCEL	OWNER	ACQUISITION	AREA	AREA
I-3	TERRA BELLA GROUP, L.L.C.	INSTR. NO. 1547649	APRIL 18, 2006	0.006 Ac. 253.0 SF
I-2	TERRA BELLA GROUP, L.L.C.			0.006 Ac. 239.8 SF
I-5	ROUSSEAU GROUP, L.L.C.	INSTR. NO. 1778157	JULY 23, 2010	0.494 Ac. 21516.4 SF
I-4	ROUSSEAU GROUP, L.L.C.			0.515 Ac. 22435.5 SF
I-1	ROUSSEAU GROUP, L.L.C.			0.034 Ac. 1489.4 SF



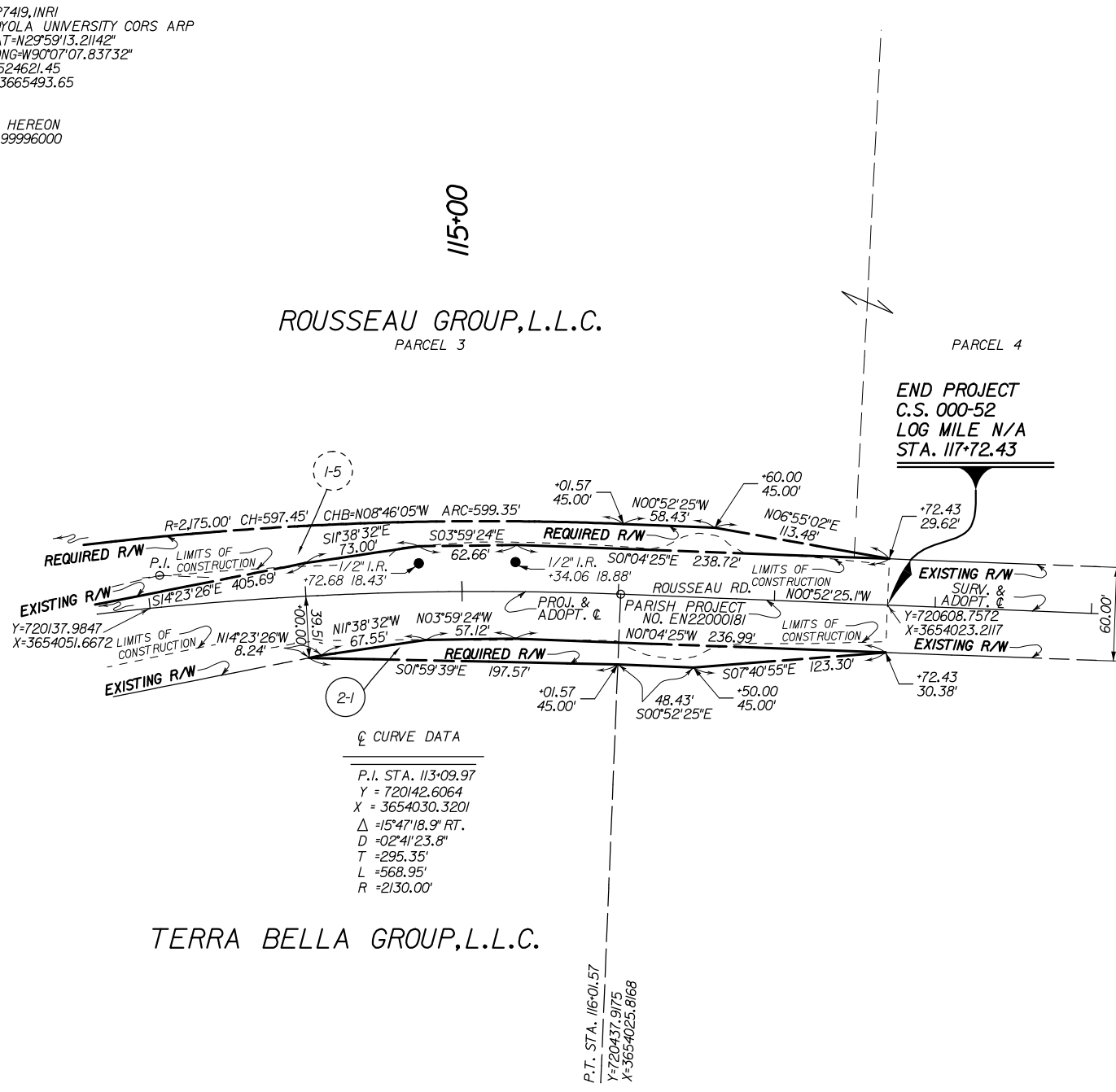
SHEET NUMBER	20
ST. TAMMANY	000-52
PARISH PROJECT	EN22000181
COMPUTED	KGJ
CHECKED	MJL
DATE	11/10/2023
SCALE	1"=50'
RIGHT OF WAY MAP PARISH PROJECT NO. EN22000181 ROUSSEAU RD. OVER SOAP & TALLOW BRANCH ST. TAMMANY PARISH	
CRESCENT ENGINEERING & MAPPING LLC	
DATE	BY
06/20/24	MJL
06/20/24	MJL
12/01/23	MJL
	REVISION DESCRIPTION
	1-5 & 2-1 TAKING LINES
	REVISE CENTERLINE GEOMETRY
	REVISE PARCEL 1-2 TAKING LINES



Final Right of Way Map

NOTES:
 1. ALL PIPES AND MONUMENTS SHOWN HEREON WERE FOUND.
 2. THE COORDINATES AND BEARINGS SHOWN HEREON ARE BASED ON LOUISIANA STATE PLANE COORDINATE SYSTEM, SOUTH ZONE (NAD 83 (2011) EPOCH 2010.00) TO CONVERT FROM GRID BEARINGS TO TRUE BEARINGS USE: 00°35'32.5"
 BASE STATIONS:
 DN8737,MSIN AJ7833,HAMM DP7419,INRI
 INFINITY CENTER CORS ARP HAMMOND CORS ARP LOYOLA UNIVERSITY CORS ARP
 LAT=N30°18'42.20549" LAT=N30°30'47.05152" LAT=N29°59'13.21142"
 LONG=W89°36'15.50691" LONG=W90°28'03.42835" LONG=W90°07'07.83732"
 Y=296021.68 Y=733115.66 Y=524621.45
 X=740968.87 X=3553447.24 X=3665493.65
 3. DISTANCES SHOWN ARE HORIZONTAL GROUND DISTANCES. TO CONVERT DISTANCES DERIVED FROM COORDINATES SHOWN HEREON TO HORIZONTAL GROUND DISTANCES, USE SCALE FACTOR: 0.99996000

GREENSBURG LAND DISTRICT
SECTION 37,T6S - RIOE



⊙ CURVE DATA
 P.I. STA. 113+09.97
 Y = 720142.6064
 X = 3654030.3201
 Δ = 15°47'18.9" RT.
 D = 02°41'23.8"
 T = 295.35'
 L = 568.95'
 R = 2130.00'



LEGEND

- EXISTING R/W →
- REQUIRED R/W →
- EXISTING C. of A. →
- REQUIRED C. of A. →
- EXIST R/W & EXIST C. of A. →
- REQ'D R/W & REQ'D C. of A. →
- LIMITS OF CONSTRUCTION
- LOT LINE
- APPARENT PROPERTY LINE
- EXISTING SURVEY LINE
- SECTION LINE

2-1	TERRA BELLA GROUP,L.L.C.	INSTR. NO. 1621744	MAY 18,2007	0.088 Ac.	3817.7 SF
PARCEL	OWNER	ACQUISITION		AREA	AREA

SHEET NUMBER	21	ST. TAMMANY	PARISH	CONTROL SECTION	PARISH PROJECT
COMPUTED	KGJ	ST. TAMMANY	PARISH	000-52	EN22000181
CHECKED	MJL	PARISH PROJECT NO. EN22000181	CONTROL SECTION	000-52	EN22000181
DATE	11/10/2023	ROUSSEAU RD. OVER SOAP & TALLOW BRANCH	PARISH PROJECT	000-52	EN22000181
SCALE	1"=50'	ST. TAMMANY PARISH	PARISH PROJECT	000-52	EN22000181
CRESCENT ENGINEERING & MAPPING LLC					
DATE	06/20/24	REVISION DESCRIPTION			
	06/20/24	REVISE PARCELS 1-5 & 2-1 TAKING LINES			
	12/01/23	REVISE CENTERLINE GEOMETRY			
		REVISE PARCEL 1-2 TAKING LINES			

