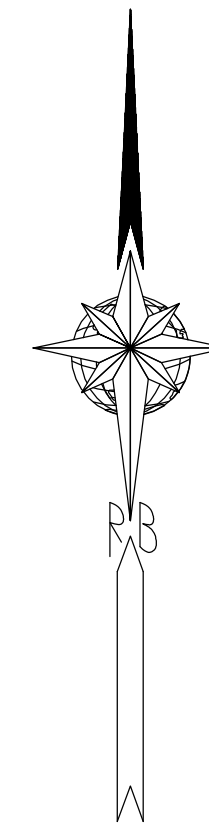
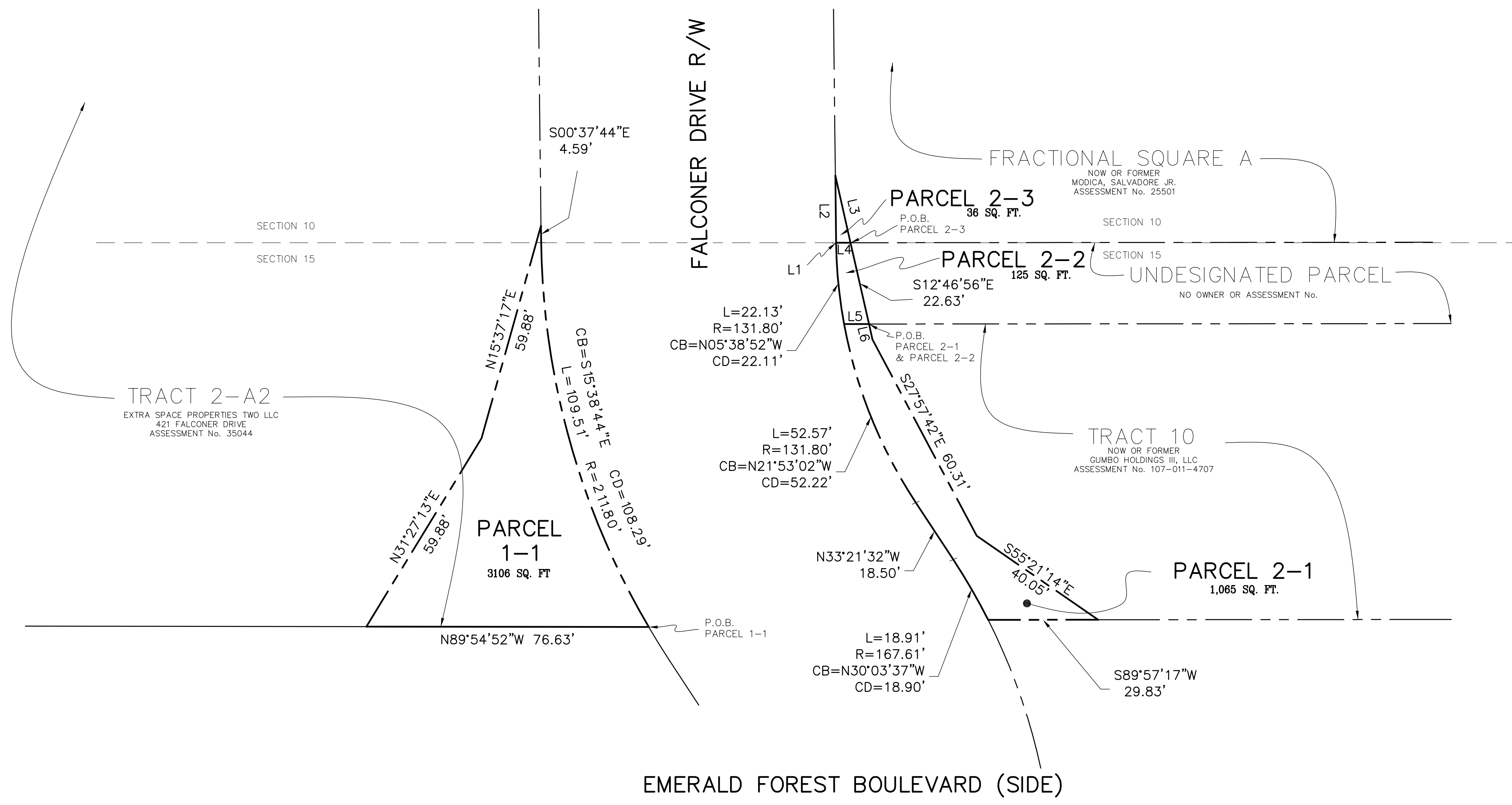


PARCEL MAP OF
PARCELS 1-1, 2-1, 2-2, & 2-3
 SECTIONS 10 & 15, TOWNSHIP 7 SOUTH, RANGE 11 EAST
 ST. TAMMANY PARISH, LOUISIANA



LINE	BEARING	DISTANCE
L1	N00°37'44"W	0.07'
L2	N00°37'44"W	18.18'
L3	S12°46'56"E	18.64'
L4	N90°00'00"W	3.92'
L5	S89°57'17"W	6.75'
L6	S12°46'56"E	4.32'

REMAINING PARCEL AREAS	
TRACT 2-A2	= 4.500 ACRES
TRACT 10	= 1.541 ACRES
UNDESIGNATED PARCEL	= 0.431 ACRES
FRACTIONAL SQUARE A	= 0.712 ACRES

DESCRIPTION PARCEL 1-1

COMMENCE FROM THE CORNER COMMON TO SECTION 10, 11, 14 & 15, TOWNSHIP 7 SOUTH, RANGE 11 EAST, ST. TAMMANY PARISH, LOUISIANA, AND GO SOUTH 00 DEGREES 58 MINUTES 08 SECONDS EAST A DISTANCE OF 22.00 FEET; THENCE SOUTH 89 DEGREES 57 MINUTES 17 SECONDS WEST A DISTANCE OF 858.35 FEET; THENCE SOUTH 32 DEGREES 48 MINUTES 54 SECONDS WEST A DISTANCE OF 97.82 FEET TO THE POINT OF BEGINNING.

FROM THE POINT OF BEGINNING GO NORTH 89 DEGREES 54 MINUTES 52 SECONDS WEST A DISTANCE OF 76.63 FEET; THENCE NORTH 31 DEGREES 27 MINUTES 13 SECONDS EAST A DISTANCE OF 59.88 FEET; THENCE NORTH 15 DEGREES 37 MINUTES 17 SECONDS EAST A DISTANCE OF 59.88 FEET; THENCE SOUTH 00 DEGREES 37 MINUTES 44 SECONDS EAST A DISTANCE OF 4.59 FEET; THENCE WITH A CURVE TURNING TO THE LEFT WITH AN ARC LENGTH OF 109.51 FEET, WITH A RADIUS OF 211.80 FEET, WITH A CHORD BEARING OF SOUTH 15 DEGREES 38 MINUTES 44 SECONDS EAST, WITH A CHORD LENGTH OF 108.29 FEET BACK TO THE POINT OF BEGINNING.

DESCRIPTION PARCEL 2-2

COMMENCE FROM THE CORNER COMMON TO SECTION 10, 11, 14 & 15, TOWNSHIP 7 SOUTH, RANGE 11 EAST, ST. TAMMANY PARISH, LOUISIANA, AND GO SOUTH 00 DEGREES 58 MINUTES 08 SECONDS EAST A DISTANCE OF 22.00 FEET; THENCE SOUTH 89 DEGREES 57 MINUTES 17 SECONDS WEST A DISTANCE OF 851.60 FEET TO THE POINT OF BEGINNING.

FROM THE POINT OF BEGINNING GO SOUTH 89 DEGREES 57 MINUTES 17 SECONDS WEST A DISTANCE OF 6.75 FEET; THENCE WITH A CURVE TURNING TO THE RIGHT WITH AN ARC LENGTH OF 22.13 FEET, WITH A RADIUS OF 131.80 FEET, WITH A CHORD BEARING OF NORTH 05 DEGREES 38 MINUTES 52 SECONDS WEST, WITH A CHORD LENGTH OF 22.11 FEET; THENCE NORTH 00 DEGREES 37 MINUTES 44 SECONDS WEST A DISTANCE OF 0.07 FEET; THENCE NORTH 90 DEGREES 00 MINUTES 00 SECONDS EAST A DISTANCE OF 3.92 FEET; THENCE SOUTH 12 DEGREES 46 MINUTES 56 SECONDS EAST A DISTANCE OF 22.63 FEET BACK TO THE POINT OF BEGINNING.

DESCRIPTION PARCEL 2-1

COMMENCE FROM THE CORNER COMMON TO SECTION 10, 11, 14 & 15, TOWNSHIP 7 SOUTH, RANGE 11 EAST, ST. TAMMANY PARISH, LOUISIANA, AND GO SOUTH 00 DEGREES 58 MINUTES 08 SECONDS EAST A DISTANCE OF 22.00 FEET; THENCE SOUTH 89 DEGREES 57 MINUTES 17 SECONDS WEST A DISTANCE OF 851.60 FEET TO THE POINT OF BEGINNING.

FROM THE POINT OF BEGINNING GO SOUTH 12 DEGREES 46 MINUTES 56 SECONDS EAST A DISTANCE OF 4.32 FEET; THENCE SOUTH 27 DEGREES 57 MINUTES 42 SECONDS EAST A DISTANCE OF 60.31 FEET; THENCE SOUTH 55 DEGREES 21 MINUTES 14 SECONDS EAST A DISTANCE OF 40.05 FEET; THENCE SOUTH 89 DEGREES 57 MINUTES 17 SECONDS WEST A DISTANCE OF 29.83 FEET; THENCE WITH A CURVE TURNING TO THE LEFT WITH AN ARC LENGTH OF 18.91 FEET, WITH A RADIUS OF 167.61 FEET, WITH A CHORD BEARING OF NORTH 30 DEGREES 03 MINUTES 37 SECONDS WEST, WITH A CHORD LENGTH OF 18.90 FEET; THENCE NORTH 33 DEGREES 21 MINUTES 32 SECONDS WEST A DISTANCE OF 18.50 FEET; THENCE WITH A CURVE TURNING TO THE RIGHT WITH AN ARC LENGTH OF 52.57 FEET, WITH A RADIUS OF 131.80 FEET, WITH A CHORD BEARING OF NORTH 21 DEGREES 53 MINUTES 02 SECONDS WEST, WITH A CHORD LENGTH OF 52.22 FEET; THENCE NORTH 89 DEGREES 57 MINUTES 17 SECONDS EAST A DISTANCE OF 6.75 FEET BACK TO THE POINT OF BEGINNING.

DESCRIPTION PARCEL 2-3

COMMENCE FROM THE CORNER COMMON TO SECTION 10, 11, 14 & 15, TOWNSHIP 7 SOUTH, RANGE 11 EAST, ST. TAMMANY PARISH, LOUISIANA, AND GO SOUTH 00 DEGREES 58 MINUTES 08 SECONDS EAST A DISTANCE OF 22.00 FEET; THENCE SOUTH 89 DEGREES 57 MINUTES 17 SECONDS WEST A DISTANCE OF 851.60 FEET; THENCE NORTH 12 DEGREES 46 MINUTES 56 SECONDS WEST A DISTANCE OF 22.63 FEET TO THE POINT OF BEGINNING.

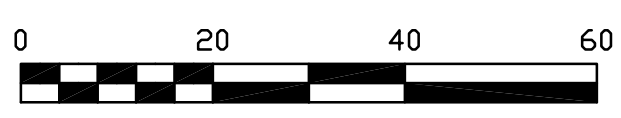
FROM THE POINT OF BEGINNING GO NORTH 90 DEGREES 00 MINUTES 00 SECONDS WEST A DISTANCE OF 3.92 FEET; THENCE NORTH 00 DEGREES 37 MINUTES 44 SECONDS WEST A DISTANCE OF 18.18 FEET; THENCE SOUTH 12 DEGREES 46 MINUTES 56 SECONDS EAST A DISTANCE OF 18.64 FEET BACK TO THE POINT OF BEGINNING.

REFERENCE:
 SURVEY BY MICKEY L. ROBERTSON
 Map File No.: 2481
 Date Filed: 9-13-2002

REFERENCE:
 SURVEY BY JOHN G. CUMMINGS
 Map File No.: 5853C
 Date Filed: 6-19-2019

NO ATTEMPT HAS BEEN MADE BY RANDALL W. BROWN & ASSOC., INC. TO VERIFY TITLE, ACTUAL LEGAL OWNERSHIP, SERVITUDES, EASEMENTS, SUBSURFACE UTILITIES, RIGHTS OF WAY, DEED RESTRICTIONS, WETLANDS OR ENVIRONMENTAL ISSUES OR OTHER ENCUMBRANCES ON THIS PROPERTY OTHER THAN THOSE FURNISHED BY THE CLIENT.

SURVEYED IN ACCORDANCE WITH THE LOUISIANA "APPLICABLE STANDARDS FOR PROPERTY BOUNDARY SURVEYS" FOR A CLASS ___ SURVEY.



ADVANCE
 Randall W. Brown, P.L.S.
 Professional Land Surveyor
 LA Registration No. 04586

CALL "LOUISIANA ONE-CALL"
 BEFORE DIGGING
 PH. 1-(800)-272-3020

THE UNDERGROUND UTILITIES SHOWN HAVE BEEN LOCATED FROM LA ONE CALL TICKET AND/OR VISIBLE UTILITY FEATURES. THE SURVEYOR MAKES NO GUARANTEE THAT THE UNDERGROUND UTILITIES SHOWN COMPRISE ALL SUCH UTILITIES IN THE AREA, EITHER IN SERVICE OR ABANDONED. THE SURVEYOR DOES NOT WARRANT THAT THE UNDERGROUND UTILITIES SHOWN ARE IN THE EXACT LOCATION INDICATED. THE SURVEYOR HAS NOT PHYSICALLY LOCATED THE UNDERGROUND UTILITIES, EXCEPT ABOVE GROUND VISIBLE UTILITY FEATURES. NO EXCAVATIONS WERE MADE DURING THE PROCESS OF THIS SURVEY TO LOCATE BURIED UTILITIES/STRUCTURES.

RANDALL W. BROWN & ASSOCIATES, INC.
 PROFESSIONAL LAND SURVEYORS
 228 W. CAUSEWAY APPROACH, MANDEVILLE, LA 70448
 (985) 624-5368 • INFO@BROWNSURVEYS.COM

PARCEL MAP OF
PARCELS 1-1, 2-1, 2-2, & 2-3
 SECTIONS 10 & 15, TOWNSHIP 7 SOUTH, RANGE 11 EAST
 ST. TAMMANY PARISH, LOUISIANA

REVISED DATE:

DRAWN BY:
 RUB
 CHECKED BY:
 RWB
 DATE:
 11-15-2023
 SCALE:
 1" = 20' ±
 SURVEY No.
 22226

SHEET