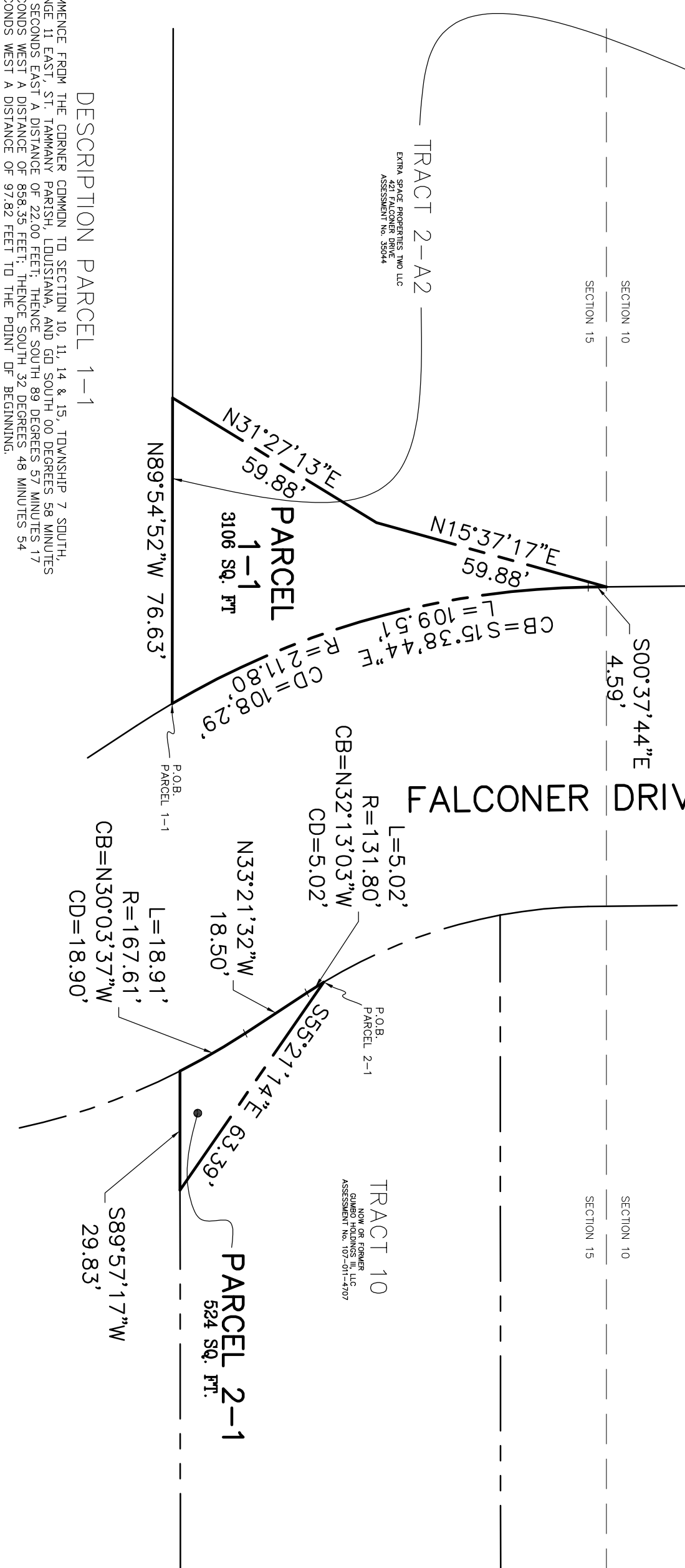


PARCEL MAP OF
PARCEL 1-1 & PARCEL 2-1
SECTION 15, TOWNSHIP 7 SOUTH, RANGE 11 EAST
ST. TAMMANY PARISH, LOUISIANA



DESCRIPTION PARCEL 1-1

COMMENCE FROM THE CORNER COMMON TO SECTION 10, 11, 14 & 15, TOWNSHIP 7 SOUTH, RANGE 11 EAST, ST. TAMMANY PARISH, LOUISIANA, AND GO SOUTH 00 DEGREES 58 MINUTES 08 SECONDS EAST A DISTANCE OF 22.00 FEET; THENCE SOUTH 89 DEGREES 57 MINUTES 17 SECONDS WEST A DISTANCE OF 858.35 FEET; THENCE SOUTH 32 DEGREES 48 MINUTES 54 SECONDS WEST A DISTANCE OF 97.82 FEET TO THE POINT OF BEGINNING.

FROM THE POINT OF BEGINNING GO NORTH 89 DEGREES 54 MINUTES 52 SECONDS WEST A DISTANCE OF 76.63 FEET; THENCE NORTH 31 DEGREES 27 MINUTES 13 SECONDS EAST A DISTANCE OF 59.88 FEET; THENCE NORTH 15 DEGREES 37 MINUTES 17 SECONDS EAST A DISTANCE OF 59.88 FEET; THENCE SOUTH 00 DEGREES 37 MINUTES 44 SECONDS EAST A DISTANCE OF 59.88 FEET; THENCE SOUTH 00 DEGREES 37 MINUTES 44 SECONDS EAST A DISTANCE OF 4.59 FEET; THENCE WITH A CURVE TURNING TO THE LEFT WITH AN ARC LENGTH OF 109.51 FEET, WITH A RADIUS OF 211.80 FEET, WITH A CHORD BEARING OF SOUTH 15 DEGREES 38 MINUTES 44 SECONDS EAST, WITH A CHORD LENGTH OF 108.29 FEET BACK TO THE POINT OF BEGINNING.

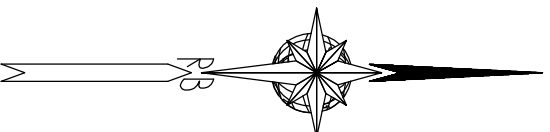
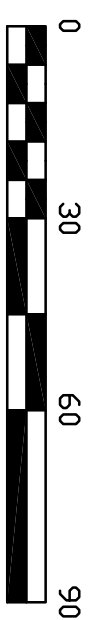
DESCRIPTION PARCEL 2-1

COMMENCE FROM THE CORNER COMMON TO SECTION 10, 11, 14 & 15, TOWNSHIP 7 SOUTH, RANGE 11 EAST, ST. TAMMANY PARISH, LOUISIANA, AND GO SOUTH 00 DEGREES 58 MINUTES 08 SECONDS EAST A DISTANCE OF 22.00 FEET; THENCE SOUTH 89 DEGREES 57 MINUTES 17 SECONDS WEST A DISTANCE OF 858.35 FEET; THENCE SOUTH 20 DEGREES 47 MINUTES 30 SECONDS EAST A DISTANCE OF 47.28 FEET TO THE POINT OF BEGINNING.

FROM THE POINT OF BEGINNING GO SOUTH 55 DEGREES 21 MINUTES 14 SECONDS EAST A DISTANCE OF 63.39 FEET; THENCE SOUTH 89 DEGREES 57 MINUTES 17 SECONDS WEST A DISTANCE OF 29.83 FEET; THENCE WITH A CURVE TURNING TO THE RIGHT WITH AN ARC LENGTH OF 18.91 FEET, WITH A RADIUS OF 167.61 FEET, WITH A CHORD BEARING OF NORTH 30 DEGREES 03 MINUTES 37 SECONDS WEST, WITH A CHORD LENGTH OF 18.90 FEET; THENCE NORTH 33 DEGREES 21 MINUTES 32 SECONDS WEST A DISTANCE OF 18.28 FEET; THENCE WITH A CURVE TURNING TO THE LEFT WITH AN ARC LENGTH OF 5.25 FEET, WITH A RADIUS OF 131.80 FEET, WITH A CHORD BEARING OF NORTH 32 DEGREES 16 MINUTES 00 SECONDS WEST, WITH A CHORD LENGTH OF 5.25 FEET BACK TO THE POINT OF BEGINNING.

NEW PARCEL AREAS
 TRACT 2-A2 = 4.500 ACRES
 TRACT 10 = 1.541 ACRES

EMERALD FOREST BOULEVARD (SIDE)



NO ATTEMPT HAS BEEN MADE BY RANDALL W. BROWN & ASSOC., INC. TO VERIFY TITLE, ACTUAL LEGAL OWNERSHIP, SERVICED, EASEMENTS, SUBSURFACE UTILITIES, RIGHTS OF WAY, DEED RESTRICTIONS, WETLANDS OR ENVIRONMENTAL ISSUES OR OTHER ENCUMBRANCES ON THIS PROPERTY OTHER THAN THOSE FURNISHED BY THE CLIENT.

SURVEYED IN ACCORDANCE WITH THE LOUISIANA "APPLICABLE STANDARDS FOR PROPERTY BOUNDARY SURVEYS" FOR A CLASS C SURVEY.

REFERENCE:
 SURVEY BY MICKEL L. ROBERTSON
 Map File No.: 2481
 Date Filed: 9-13-2002

REFERENCE:
 SURVEY BY JOHN G. CUMMINGS
 Map File No.: 5853C
 Date Filed: 6-19-2019

ADVANCE	Randall W. Brown & Associates, Inc. Professional Land Surveyors	228 W. Causeway Approach, Mandeville, LA 70448 (985) 624-5368 FAX (985) 624-5309 info@brownsurveys.com	Date: OCTOBER 9, 2023 Survey No. 22226 Project No. .
Randall W. Brown, P.L.S. Professional Land Surveyor LA Registration No. 04586			Scale: 1" = 30' ± Drawn By: RJB Revised: