

**DAMMON**  
**ENGINEERING, INC.**  
**LOUISIANA & MISSISSIPPI**

Chief Engineer: Brian Misch, PE  
554 Old Spanish Trail  
Slidell, LA 70458  
www.dammonengineering.com  
Info@dammonengineering.com  
PH: 985.649.5832

[illegible]

SEAL:

**NEW BOAT STORAGE**

**59 INVESTMENTS**

59 INVESTMENTS  
PEARL RIVER, LA

DRAWN BY:	DATE:	CHECKED BY:
		CKD

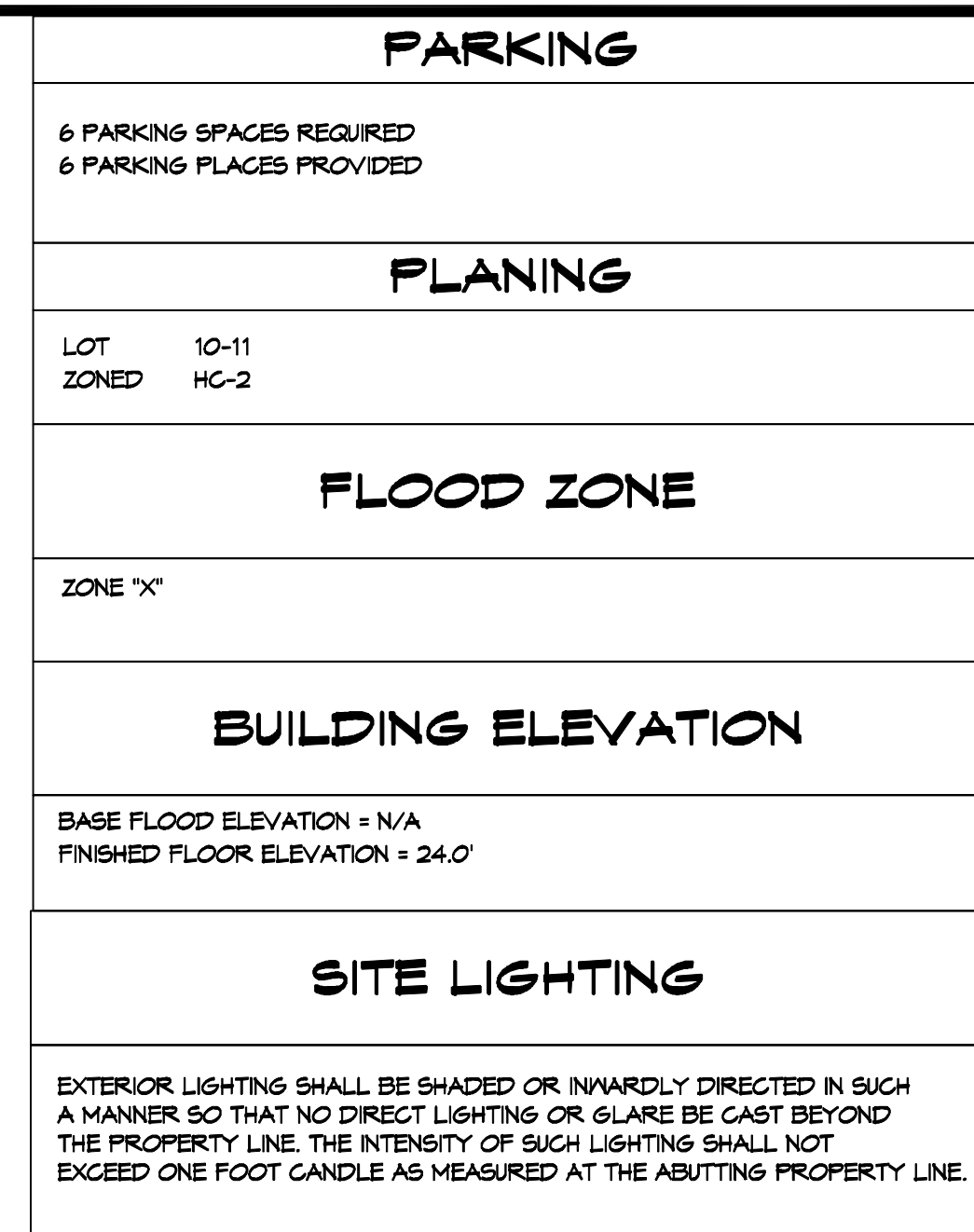
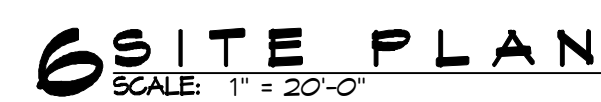
SHEET TITLE:  
**SITE PLAN**

DRAWING NUMBER:
-----------------

C101

SHEET No: 1 of X



[illegible]

SEAL:

**NEW BOAT STORAGE**

SHEET TITLE:  
**SITE PLAN**

DRAWING NUMBER:

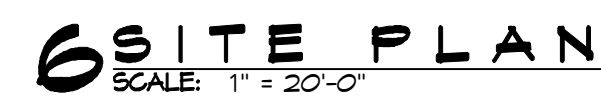
C101

SHEET No: 1 of X

**DAMMON**  
ENGINEERING, INC.

Chief Engineer: Brian Mistich, PE  
554 Old Spanish Trail  
Stideli, LA 70458  
www.dammonengineering.com  
info@dammonengineering.com  
PH: 985.649.5832



[illegible]

SEAL:

**NEW BOAT STORAGE**

SHEET TITLE:  
SITE PLAN

DRAWING NUMBER:

C101

SHEET No: 1 of X

**DAMMON**  
ENGINEERING, INC.

**LOUISIANA & MISSISSIPPI**

Chief Engineer: Brian Wistich, PE  
554 Old Spanish Trail  
Slidell, LA 70458

[www.dammonengineering.com](http://www.dammonengineering.com)  
[info@dammonengineering.com](mailto:info@dammonengineering.com)  
PH: 985.649.5832