

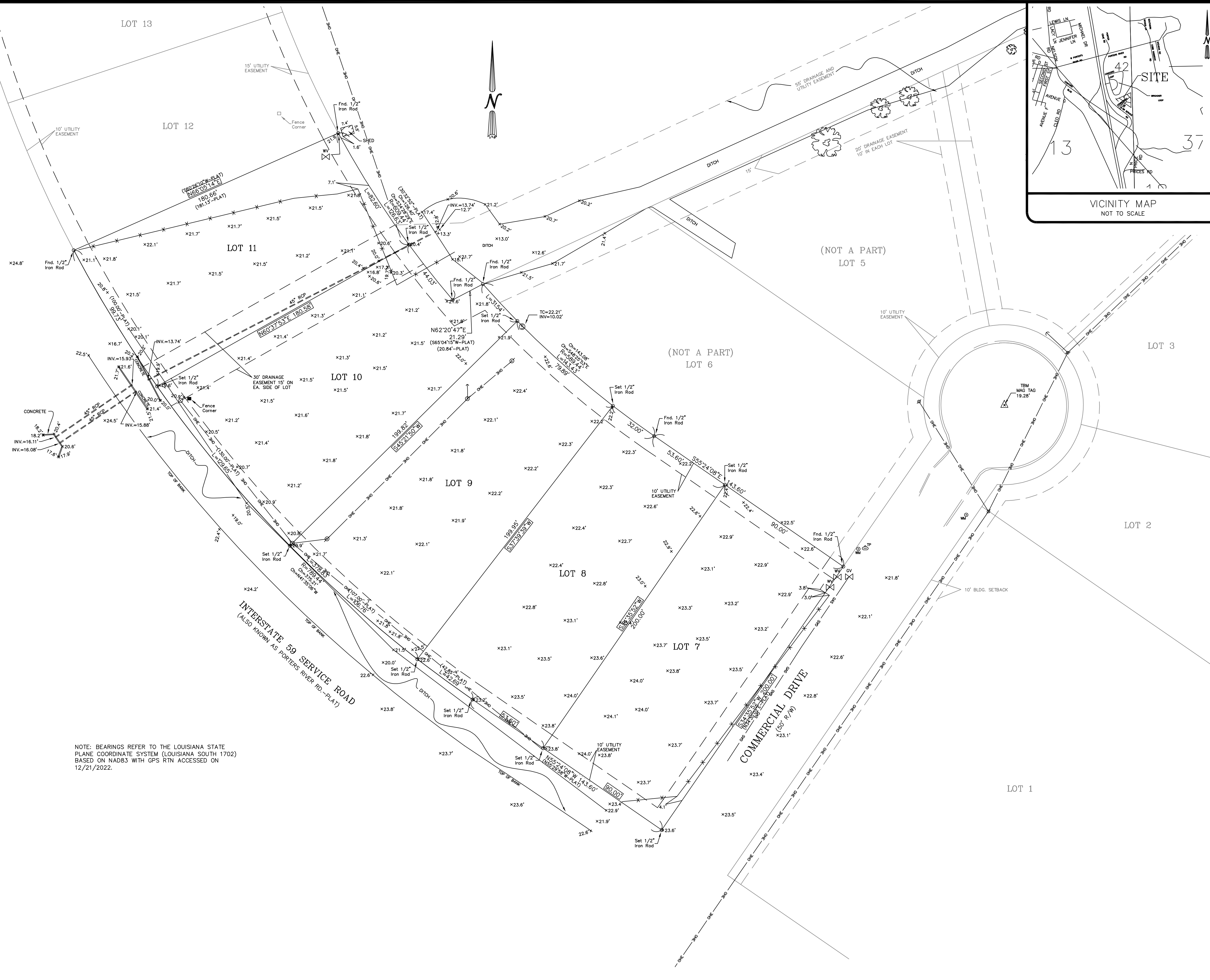
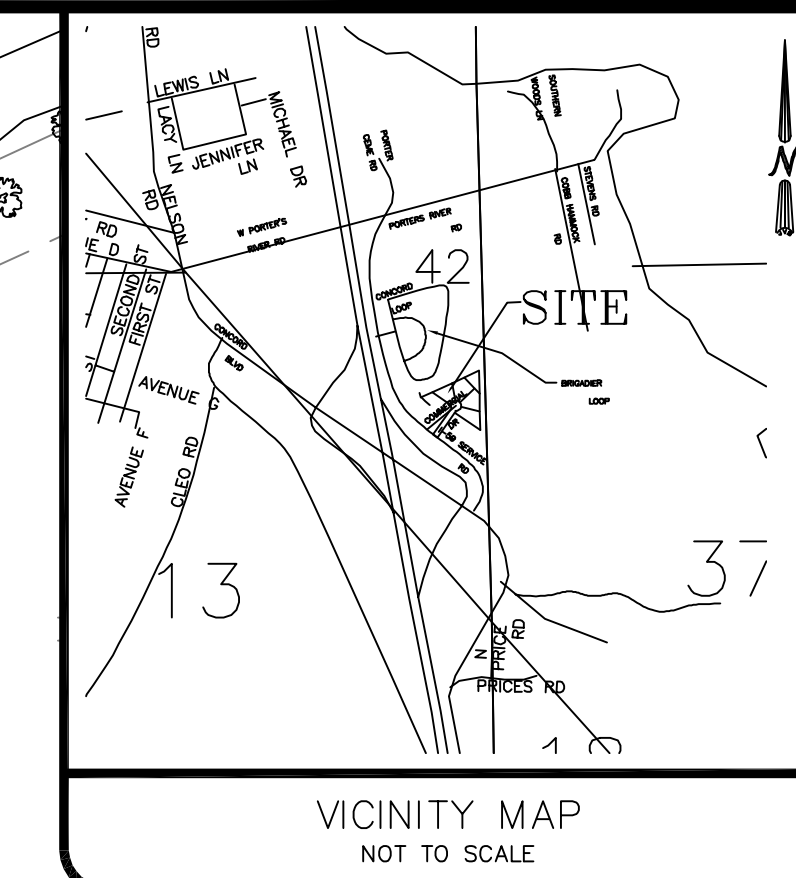
GENERAL NOTES

THE LOCATIONS OF UNDERGROUND UTILITIES AS SHOWN HEREON ARE BASED ON ABOVEGROUND STRUCTURES AND RECORD DRAWINGS PROVIDED THE SURVEYOR. LOCATIONS OF UNDERGROUND UTILITIES OR STRUCTURES MAY VARY FROM LOCATIONS SHOWN HEREON. ADDITIONAL BURIED UTILITIES OR STRUCTURES MAY BE ENCOUNTERED. NO EXCAVATIONS WERE MADE DURING THE PROGRESS OF THIS SURVEY TO LOCATE BURIED UTILITIES OR STRUCTURES.

I HAVE CONSULTED THE FLOOD INSURANCE RATE MAPS AND FOUND THIS PROPERTY IS NOT IN A SPECIAL FLOOD HAZARD AREA. F.I.R.M. COMMUNITY MAP NO. 225205 0430 D; DATED: 04/1/1999 FLOOD ZONE: C; BASE FLOOD ELEVATION: N/A.

REFERENCE PLAT: A Subdivision plat by Borgen Engineering Dated 04/18/1984 Survey # 38,850-1, Map File # 896A.

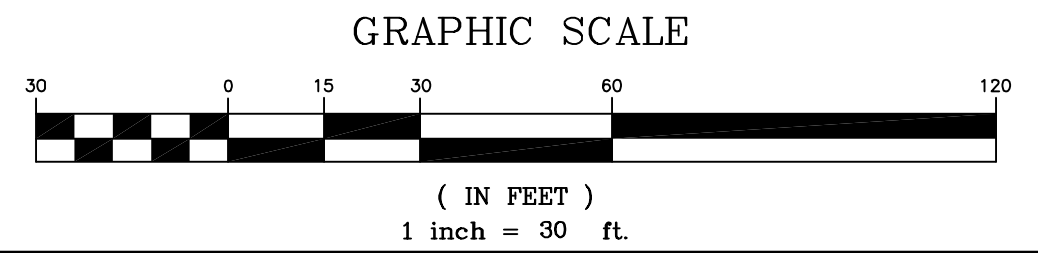
SITE TBM: MAG NAIL SET IN CENTER OF CUL-DU-SAC OF COMMERCIAL DRIVE, ELEVATION = 19.28 FEET



NOTE: BEARINGS REFER TO THE LOUISIANA STATE PLANE COORDINATE SYSTEM (LOUISIANA SOUTH 1702) BASED ON NAD83 WITH GPS RTN ACCESSED ON 12/21/2022.

LEGEND

- ⊙ S SEWER MANHOLE, SEWER LINE
- ⊙ W WATER MANHOLE, WATER LINE
- ⊙ G GAS MANHOLE, GAS LINE
- ⊙ T TELE. MANHOLE, TELE. LINE
- ⊙ D DRAIN MANHOLE, DRAIN LINE
- ⊙ D DRAIN INLET, DRAIN LINE
- ⊙ E T TV POWER POLE / OVERHEAD LINES
- ⊙ E T TV ELEC. TOWER / OVERHEAD LINES
- ⊙ CATCH BASIN
- ⊙ LIGHT STANDARD
- ⊙ TRLT TRAFFIC LIGHT
- ⊙ TELE. , ELEC. , CATV PEDESTAL
- ⊙ GAS, WATER, ELECTRIC METER
- ⊙ GAS, WATER VALVE
- ⊙ SEWER, DRAIN CLEANOUT
- ⊙ FIRE HYDRANT
- ⊙ GUY WIRE ANCHOR
- ⊙ SIGN
- ⊙ PYLON
- ⊙ MAILBOX
- ⊙ TREE
- ⊙ SHRUB
- ⊙ FENCE



J.V. Burkes & Associates, Inc.
SURVEYING ENGINEERING • ENVIRONMENTAL

1805 Shortcut Highway
Slidell, Louisiana 70458
E-mail: jvbassoc@jvburkes.com
Phone: 985-449-0075 Fax: 985-449-0154
LA REC. NO. 4785

NO.	DESCRIPTION	DATE	BY

A TOPOGRAPHIC SURVEY PLAT OF LOTS 7 THRU 11, I-59 COMMERCIAL PARK SUBDIVISION IN SECTION 42, T-8-S, R-14-E, GREENSBURG LAND DISTRICT, ST. TAMMANY PARISH, LOUISIANA

DECLARATION IS MADE TO ORIGINAL PURCHASER OF THIS SURVEY. IT IS NOT TRANSFERABLE TO ADDITIONAL INSTITUTIONS OR SUBSEQUENT OWNERS. SURVEY IS VALID ONLY IF PRINT HAS ORIGINAL SEAL OF SURVEYOR.

59 MILITARY INVESTMENTS, LLC.

SCALE: 1" = 30'

DATE: 01/04/2022

DRAWN BY: VLL CHECKED BY: JDL

DWG. NO. 20210738

SHEET 1 OF 1

PLATFILE: J.V. - Office: New Orleans, Louisiana; Plot: Storage: 59 Military Investments, LLC; Drawing: 20210738.dwg